



## **Stainless Steel Machining and Welding**

**We were in the yacht accessories business since 1990.**

**Now, we serve Automotive Industry and Railway Systems for 10 years.**

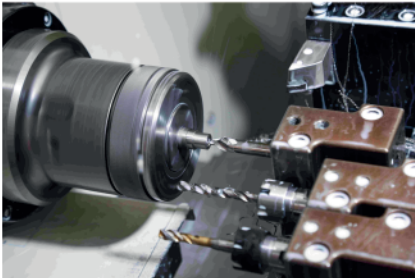
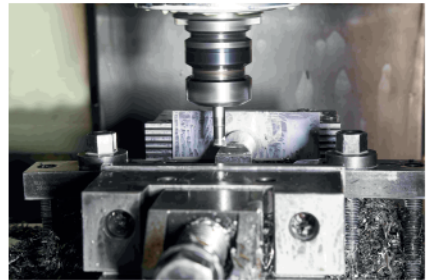


## A Strength of Our Business: Machining Sector

Starting from the year 2014, AGR INOKS has also added machining production to its manufacturing branches, and in line with technological advancements, it initiated investments in CNC machines. Within our company, which has shown rapid progress in the automotive and machinery sectors, there are 6 CNC machines as of the year 2018. Our manufacturing activities are carried out in the areas of MOLD, FIXTURE, DEVICE, and SPECIAL MACHINES. With its constantly renewing and improving nature, AGR INOKS has established a significant position in the industry. The local and international customer portfolio, along with its continuous renewal and development, has placed AGR INOKS in a strong position within the sector.

## End-to-End Manufacturing Solutions

We provide comprehensive manufacturing solutions tailored to your unique needs. From prototyping and product development processes to large-scale productions, our machining services cover all stages of your manufacturing journey. Additionally, our dedicated team collaborates closely with you from initial design phases to final production, ensuring seamless communication and efficient project execution. With our streamlined processes and flexible manufacturing capabilities, we support your success by delivering timely solutions.



## Material Expertise

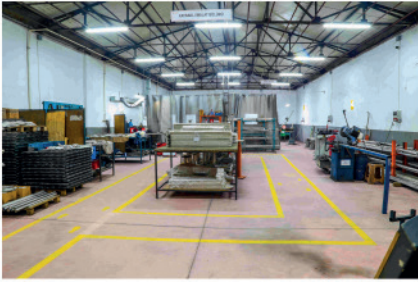
We have experience working with a variety of materials, from traditional metals to advanced alloys and exotic materials. Whether it's stainless steel, aluminum, brass, titanium, or engineering plastics, we understand the unique characteristics and challenges of each material. Our expertise allows us to select optimal machining techniques, tooling, and cutting parameters to achieve superior results, maximizing efficiency and minimizing waste.

## Precision is What Matters

In the fast-paced world of manufacturing, precision is the key to success. Our machining solutions operate with a mindset dedicated to excellence, ensuring that every product we produce adheres to the highest precision and quality standards. Whether dealing with complex geometries, intricate patterns, or tight tolerances, our processors possess the expertise and experience needed to overcome any challenge. Utilizing the latest CNC technology and advanced software, we guarantee precise and consistent results every time.







## Three Generations of Metal Mastery

Since the early 1950s, our company has been involved in metal processing, welding, bending, and accessory works, gaining knowledge and experience in the Stainless Steel industry. Since our original establishment, we have become a recognized name in the industry, committed to quality, customer satisfaction, and innovative solutions. Focusing on our achievements and customer contentment, we are determined to maintain our leadership in the industry.

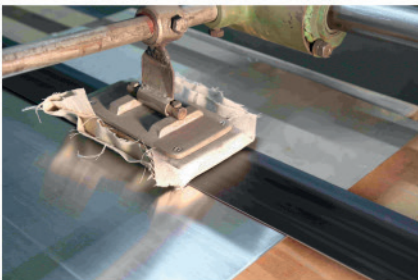
## Mastery in Stainless Steel Processing

Stainless steel is a preferred material in many industries due to its durability, corrosion resistance, and aesthetic appearance. Our expert team employs precise processing techniques on stainless steel using advanced technology equipment. Through cutting, milling, drilling, and other processing methods, we shape stainless steel components perfectly. While manufacturing each of our products to meet the highest quality standards, our aim is to exceed our customers' expectations.



## Quality and Reliability

Quality is at the core of our efforts. We manufacture stainless steel products using high-quality materials and meticulously selected components. Throughout the processes of processing, bending, polishing, and welding, we adhere closely to quality control standards, ensuring exceptional results for our customers every time. With our reliability and durable products, we're here to add value to our customers' businesses.



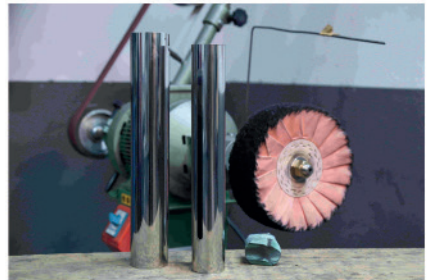
## Leading Stainless Steel Solutions

We take pride in being a leading solution partner for your stainless steel products. Customized stainless steel parts tailored to your needs are brought to life through our machining, bending, and polishing skills. With our products that combine durability, aesthetics, and quality, we strive to satisfy you.



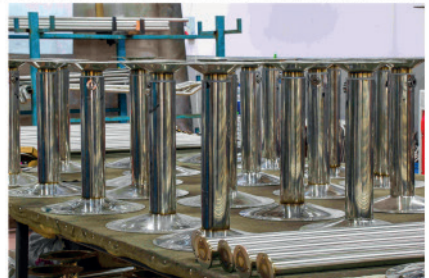
## Stainless Steel Bending for Unique Designs

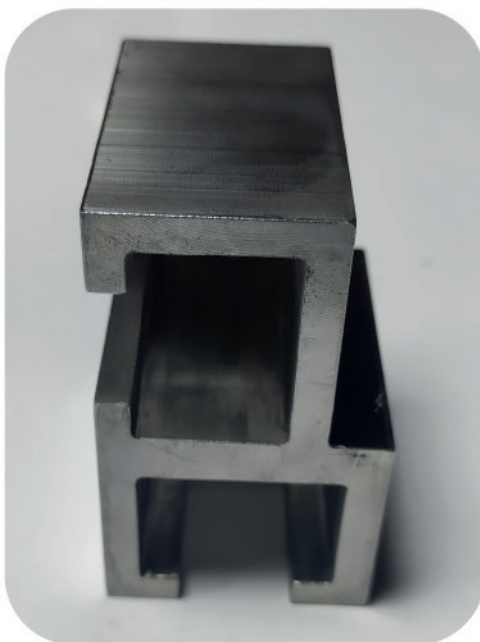
We don't just process stainless steel; we utilize our bending capabilities to transform it into unique and striking designs. Our experienced bending specialists meticulously shape stainless steel into desired forms with precision, creating distinctive and aesthetic products. In all our projects, we consider customer requirements and provide customized solutions. Each of our products reflects both durability and elegance.

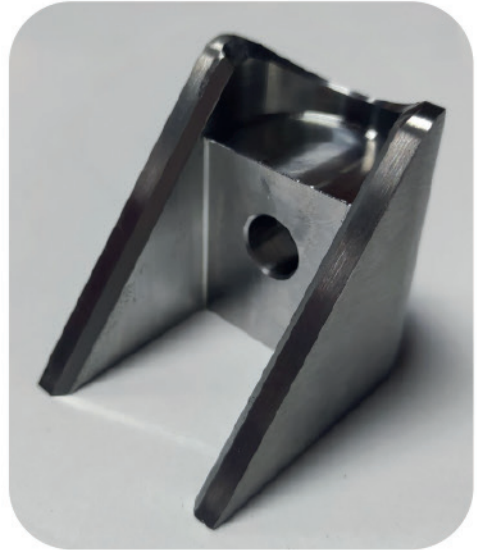


## Brilliance and Elegance with the Art of Polishing

By polishing the surface of stainless steel, we add brilliance and elegance to our products. Our skilled team works meticulously in the polishing process, smoothing the surface of stainless steel and achieving a high-quality shine. The polished surfaces make our products visually stunning and enhance the elegance of any space.











*Figure 1 : Pipe Bending Machine*



*Figure 2: Surface Satin Machine*



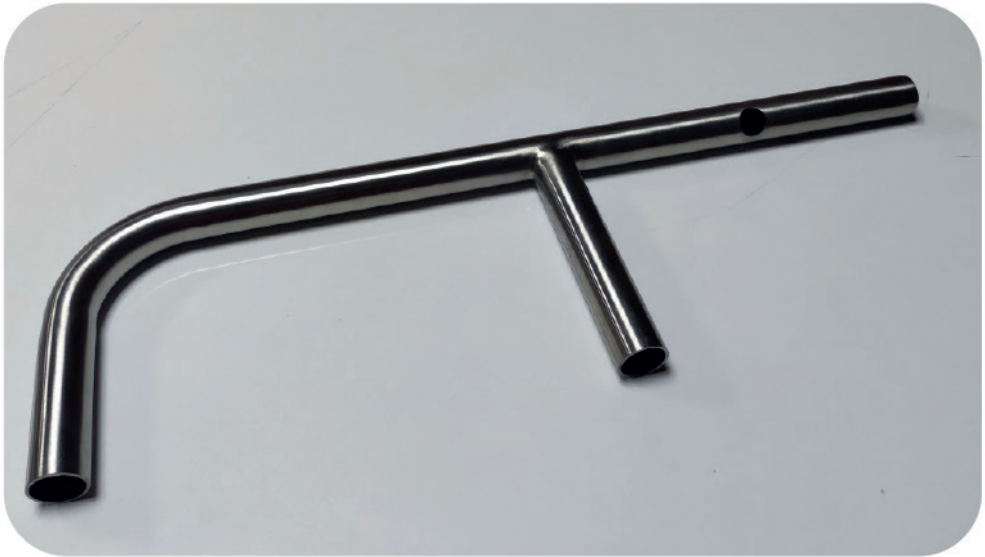
**Figure 3: Polishing Process**



**Figure 4: Welding Process**







## Machining Department



## Welding Department



		MACHINE LIST			Document No:	PR12-LS-01
					Release Date:	2.01.2019
					Revision No:	0
					Revision Date:	-
CODE	MACHINE MANUFACTURER CODE	NAME	BRAND	PRODUCTION YEAR	FEATURE	
MK-01	SMV-1060 H3L	CNC VERTICAL MACHINING CENTER	FİNETECH	2014	1000*600*650mm Processing Capacity	
MK-02	SMV-1060 H3L	CNC VERTICAL MACHINING CENTER	FİNETECH	2014	1000*600*650mm Processing Capacity	
MK-03	VM-740 S	CNC VERTICAL MACHINING CENTER	NEWAY	2021	650*420*500mm Processing Capacity	
MK-04	GCL-2L	CNC LATHE	GOODWAY	2014	8"*650mm Processing Capacity	
MK-05	GA-3300	CNC LATHE	GOODWAY	2017	12"*650mm Processing Capacity	
MK-06	HCP-42	CNC AUTOMATIC LATHE	PROSEIKI	2021	6"*350mm Processing Capacity	
MK-07	MCV-650	CNC VERTICAL MACHINING CENTER	FRONTIER	2023	650*500*500mm Processing Capacity	
MK-08	RB 85	RADIAL DRILLING MACHINE	OPTİ DRİLL	2013	Ø 16 mm	
MK-09	SLT-15V	COMPRESSOR	SOLLANT	2023	15 KW	
MK-10	HUK-2000 RH/HMS-2	HYDRAULIC THREAT CUTTER	ACROBAT	2017	M5-M24 Threading Capacity	
MK-11	HİDROLİKSAN	HYDRAULIC PRESS	HALİM USTA HİDROLİKSAN	2017	80 Tonne	
MK-12	DC PULSE TIG 200	ARGON WELDING MACHINE	OTTO WELDERS	2007	200 A	
MK-13	INVERTEC 275 TP	ARGON WELDING MACHINE	LINCOLN	2022	270 A	
MK-15	BTS-NC-38	PIPE BENDING MACHINE	BTS MAKİNA	2012	Max Ø60	
MK-16	BMSO 320	BAND SAW	BEKA MAK	2008	Ø 175 mm	
MK-17	D4275	MITER SAW	IMAK	2004	Angle Cutting	
MK-18	PA 75	POLISHING MACHINE	CAN MAKİNA	2021		
MK-19	-	FLAP WHEEL MACHINE	GAMAK	-		
MK-20	-	SURFACE SATIN MACHINE	-	-	Hand Controlled Satin Machine for Sheet Metals	
MK-21	B 2000/200	BELT SANDER	CAN MAKİNA	2020		
MK-22	BP 110	PIPE SATIN MACHINE	FAMAK MAKİNA	2023	Semi Automatic Satin Machine for Pipes	
MK-23	-	GRINDER	-	-		
MK-24	-	GRINDER	-	-		
MK-25	-	GRINDER	-	-		
MK-26	-	POWER SANDER	-	-		
MK-27	ZSM 32	PILLAR DRILLING	ZÜMRÜT MAKİNA	2003	Ø 32 mm	



