

WOMEN'S SWIMWEAR
NEW COLLECTION



TROPICANA
SINCE 2000





TROPICANA

SINCE 2000

Sales Manager
Julia Dren,
sales1@monaok.com

EE Mob +372 58514082,
LV Mob +371 28068666

Designer, Project Manager

Tiana /Tatjana Kurpusheva
sales2@monaok.com
Mob. +371 28338882

Contact Manager

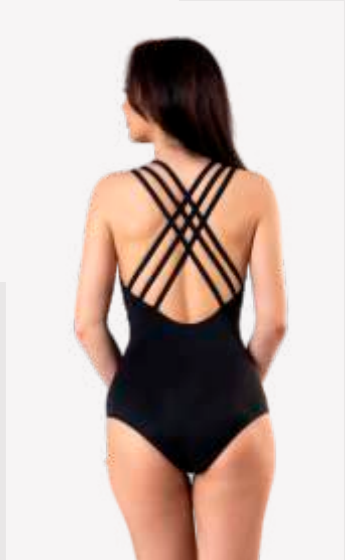
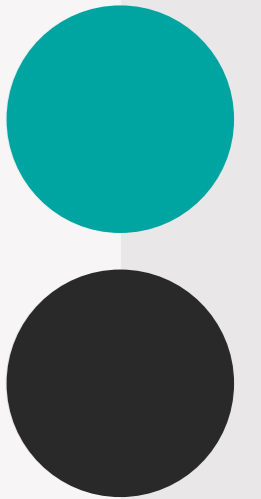
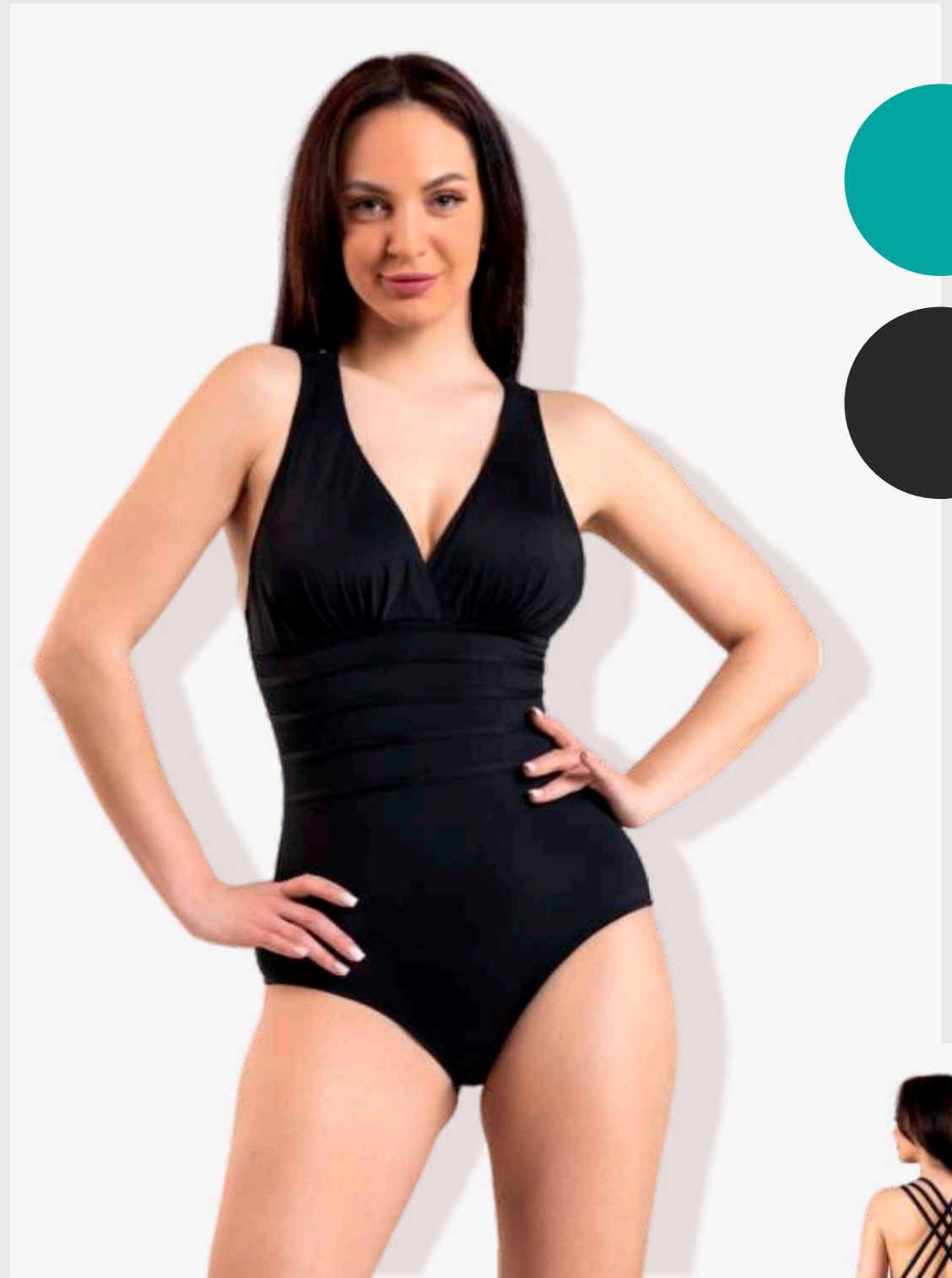
sales4@monaok.com
Mob. +371 28668849

SIA Mona Ok,
Laidzes iela 10, Rīga, Latvija, LV-1002,
www.monaokgroup.com

Golden Lagoon

N25-6242

38-46



Solid color swimwear, soft material . One-piece swimsuit is very graceful
The upper part has inserts molded cups that can be pulled out under the bust four lines the trim that supports the breast and gives the silhouette elegance.
The cup comes out on three straps on each side that perfectly emphasized crossed on the back part

TROPICANA
SINCE 2000

Golden Lagoon

Group offered in two colors - azure and black

N25-6214

38-44

N25-6260

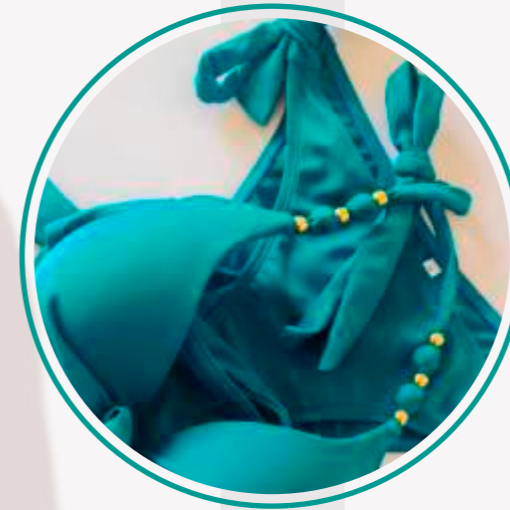
38-44

N25-6240

40-48C



The upper cup inside has a moulded inserts the cup
The straps with decorative element a gold chain
the bottom is panties with ties



This swimsuit top part made from moulded cup without thickening. On the strap are decorative gold beads
The panties with ties



One-piece swimsuit top part comfortable wireless with moulded cups, can be detachable.
Under the bust chic drapery emphasizing the figure and concealing imperfections

W25-3151
M-XL

The same design as the main print pattern perfectly complements this group and is indispensable at the resort; it is made of elastic net. The Long, light dress is an excellent accessory for walks. The upper part is adjustable depending on the length of the spaghetti; you can make them lower, thus the neckline will be more open; the dress flutters romantically in the wind.



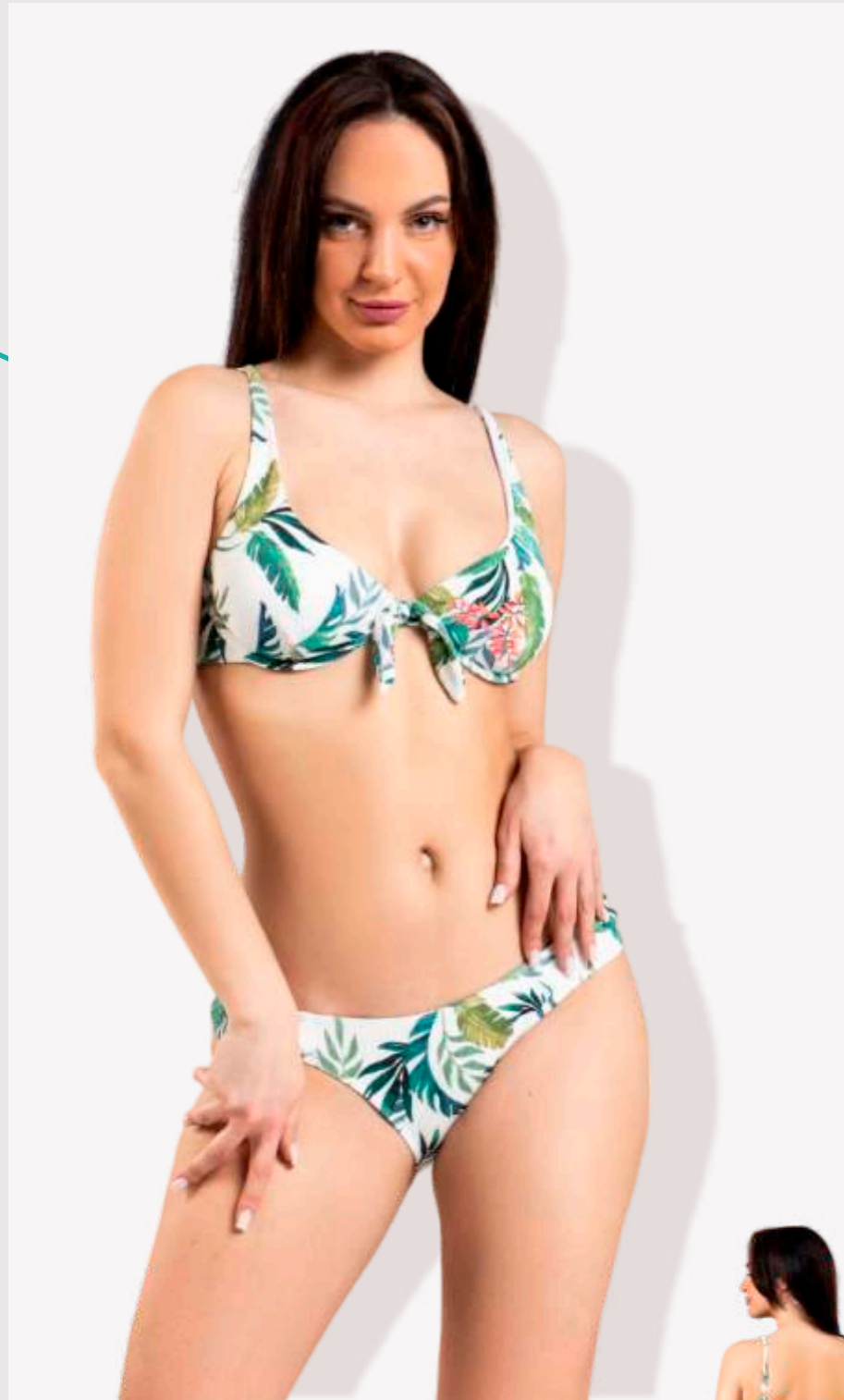
W25-3150
One size

The large pareo of the same design as the main print pattern perfectly complements this group and is indispensable at the resort; it is made of elastic net and can simultaneously serve as both a cape and a dress if tied around the chest or around the neck.

Tropicana Land

W25-3110

38-44



The upper part is a foamed bra with a threepart cup; elastic wires specially designed for large sizes and wide wings hold large, heavy breasts well; High panties with a double waist part on top that can be worn in two positions, lifting up and lowering down.

W25-3114

38-46 D



The top part is a plain bra with a deep cup and powernet lining; elastic wires specially designed for large sizes and wide wings hold large, heavy breasts well; On the strips possible silver buckles. High bottom with lines that slim the silhouette and perform the function of shaping panties.

W25-3140

38-46 D



The asymmetrical front part of which is made of printed fabric, it creates comfort slimming silhouette. The design is thought out to support the large heavy chest of the front part and at the same time the open back allows you to sunbathe and swim comfortably. There is a metal buckle on the belt that emphasizes the high waistline.

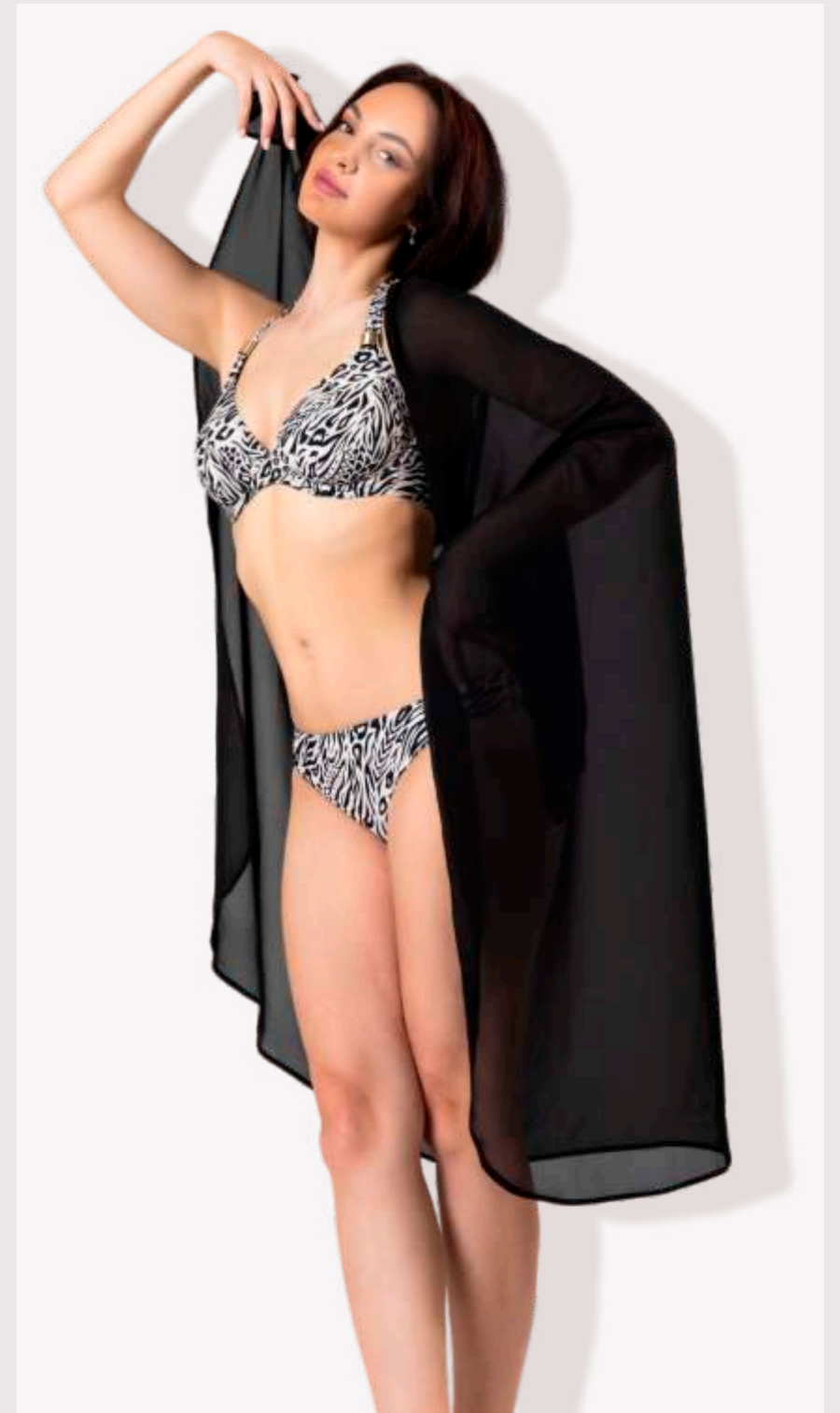
Group made of textured jacquard fabric, pleasant to the touch, printed with bright palm tropical motifs, has a gold ring buckles. Offered in two colors - light and dark versions




TROPICANA
SINCE 2000

L25-2250

One size



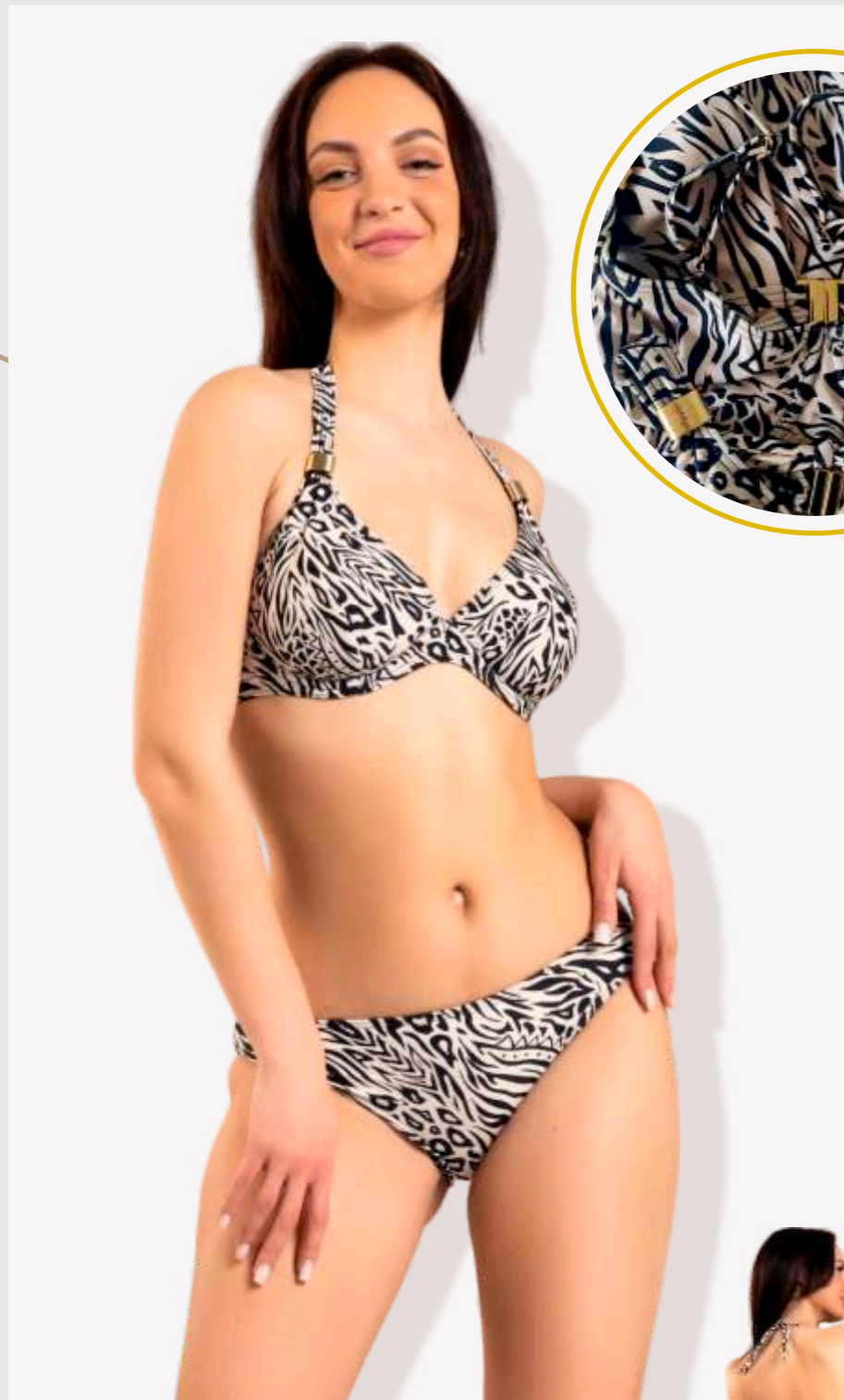
Universal large pareo made of chiffon fabric
Will suit any styles where there is black color . This is
necessary accessory for any resort. Charming
flutters on the wind

Natural Elegance

Can produce cups CDEFG If the size order is 100 pcs per size

L25-2224

40-50D

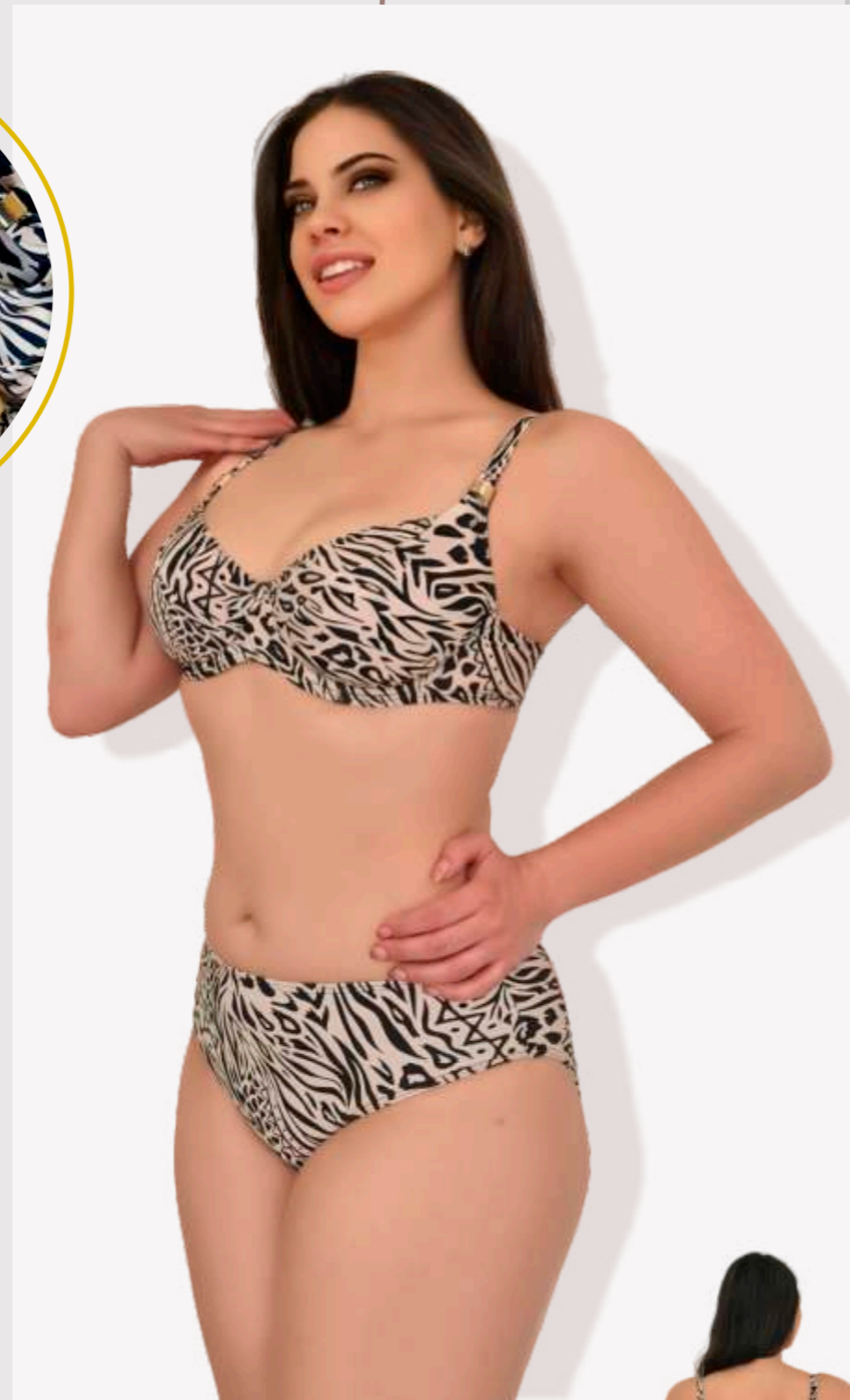


Elegant print design, geometric two-tone color abstracted animal with gold accessories
 Top part -open plain deep cup for large breast and open shape wires. The inner layer power mesh
 The vertical seam and open decollete comfortable for sunbathing.
 Bottom classic middlewaist panties.



L25-2220

40-50D

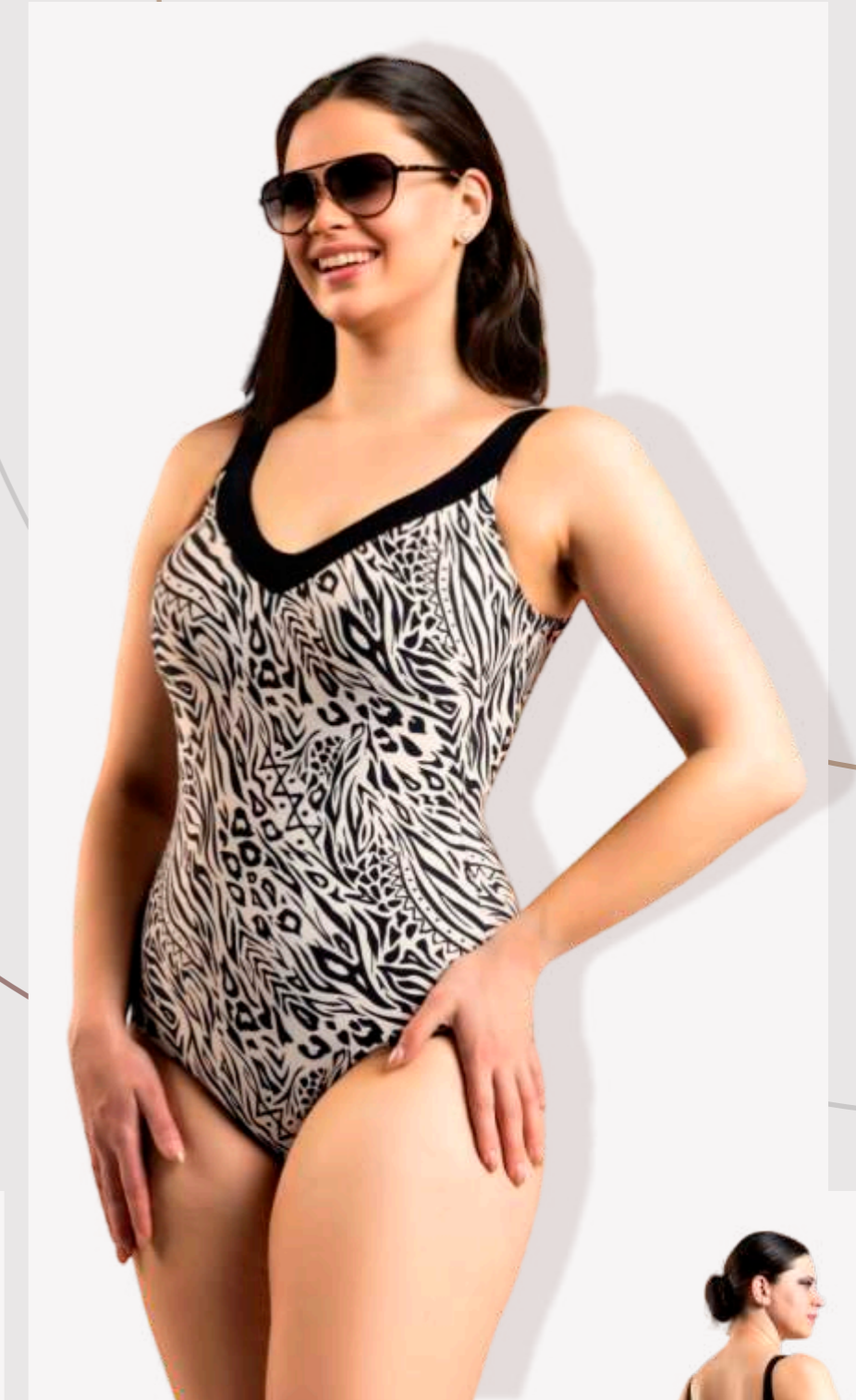


The top part is a plain bra with a deep cup and powernet lining; elastic wires specially designed for large sizes and wide wings hold large, heavy breasts well; On the strips possible silver buckles. High bottom with lines that slim the silhouette and perform the function of shaping panties.



L25-2240

40-50D



Elegant print design, geometric two-tone color abstracted animal.
 One-piece swimsuit by printed smooth fabric
 The design shape the body and create a slender silhouette
 The open back allows to tan and at the same time is thought out so that it holds a heavy chest and hold while swimming






TROPICANA
SINCE 2000

L25-2352

M-XL



Comfortable summer trousers in a loose straight silhouette with an elasticated waist. Comfortable beach accessory, suitable for a resort and pleasure, made of chiffon

Azure zebra

Can produce cups CDEFG If the size order is 100 pcs per size

L25-2316

40-50D



Two-piece swimsuit with a smooth printed fabric of bright green emerald color print with an abstract zebra skin pattern. The upper part is a foamed bra with a threepart cup; elastic wires specially designed for large sizes and wide wings hold large, heavy breasts well; High panties with a double waist part on top that can be worn in two positions, lifting up and lowering down

L25-2320

40-50D



Two-piece swimsuit with a smooth printed fabric of bright green emerald color print with an abstract zebra skin pattern. The upper part is a plain bra with a deep cup and powernet lining; elastic wires specially designed for large sizes and wide wings hold large, heavy breasts well; High bottom with lines that slim the silhouette and perform the function of shaping panties

L25-2340

40-50D



One-piece swimsuit the asymmetrical front part of which is made of printed fabric creates Comfort slimming silhouette. The design is thought out to support the large heavy chest of the front part and at the same time the open back allows you to sunbathe and swim comfortably

Palm Jungle

T25-4151

L-XL



The chiffon tunic with drawstring under the bust. of the same design as the main one, but a larger pattern perfectly complements this group and is indispensable at the resort; We offer a short tunic or a long maxi at the request of the client, length up to 135 cm



T25-4150

One size

The large pareo of the same design as the main one, but a larger pattern perfectly complements this group and is indispensable at the resort; it is made of chiffon and can simultaneously serve as both a cape and a dress if tied around the chest or around the neck



TROPICANA

SINCE 2000

Palm Jungle

T25-4115

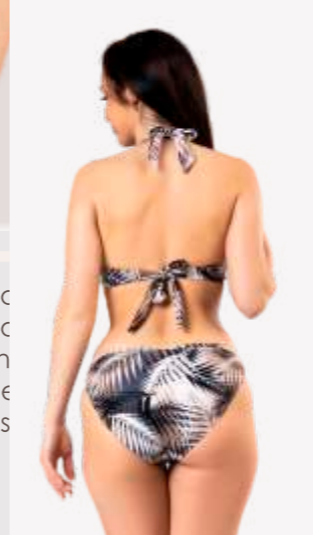
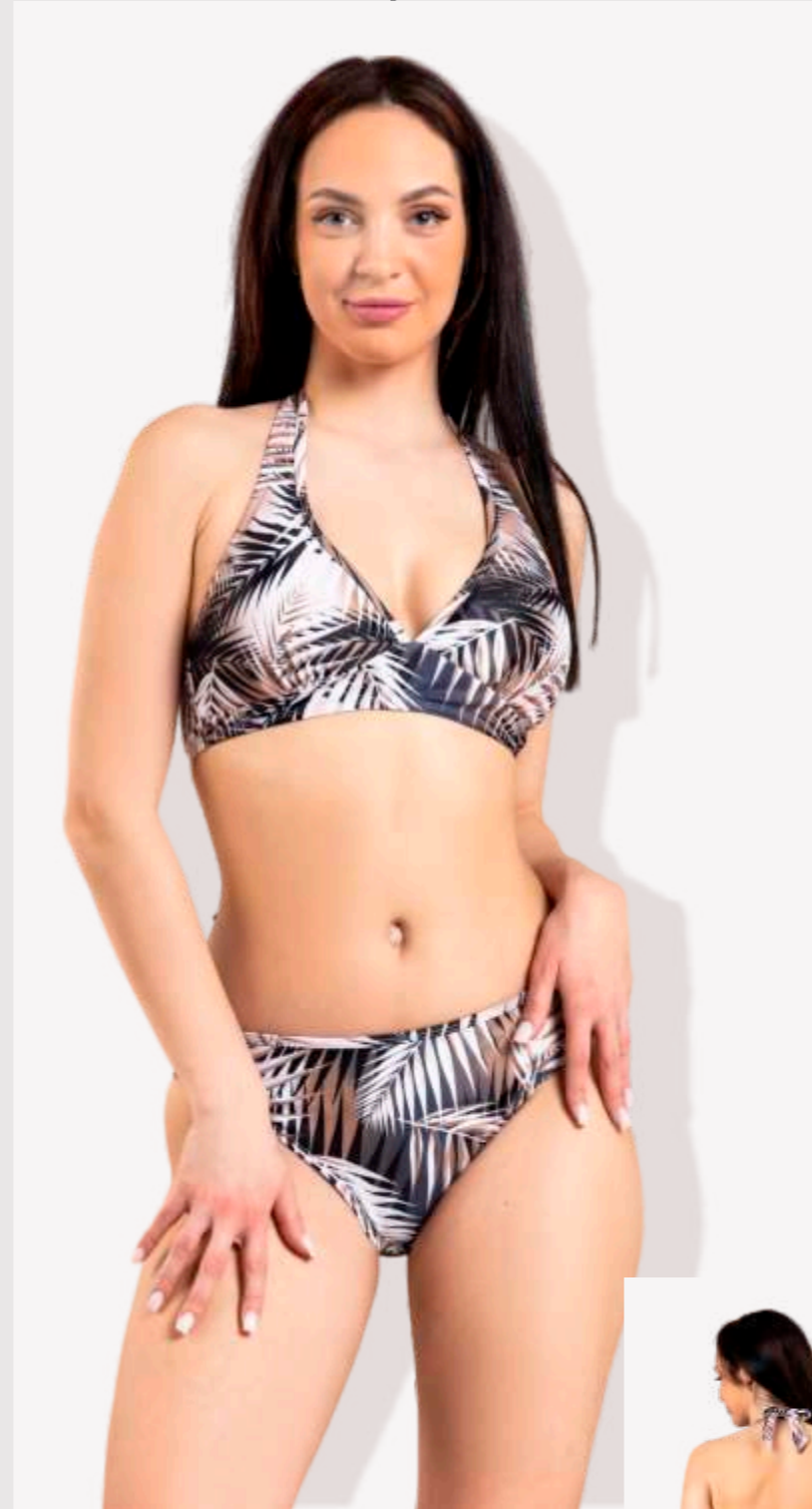
38-44C



Elegant swimsuit made of smooth fabric with a print of sandy-chocolate brown shades with a pattern of palm leaves will highlight tanned skin. The top of the swimsuit is a deep balconette that can be worn in two ways; the straps can be tied around the neck or on the back, thus it will be a bandeau. Classic midwaist panties (will cancel narrow side drapery)

T25-4114

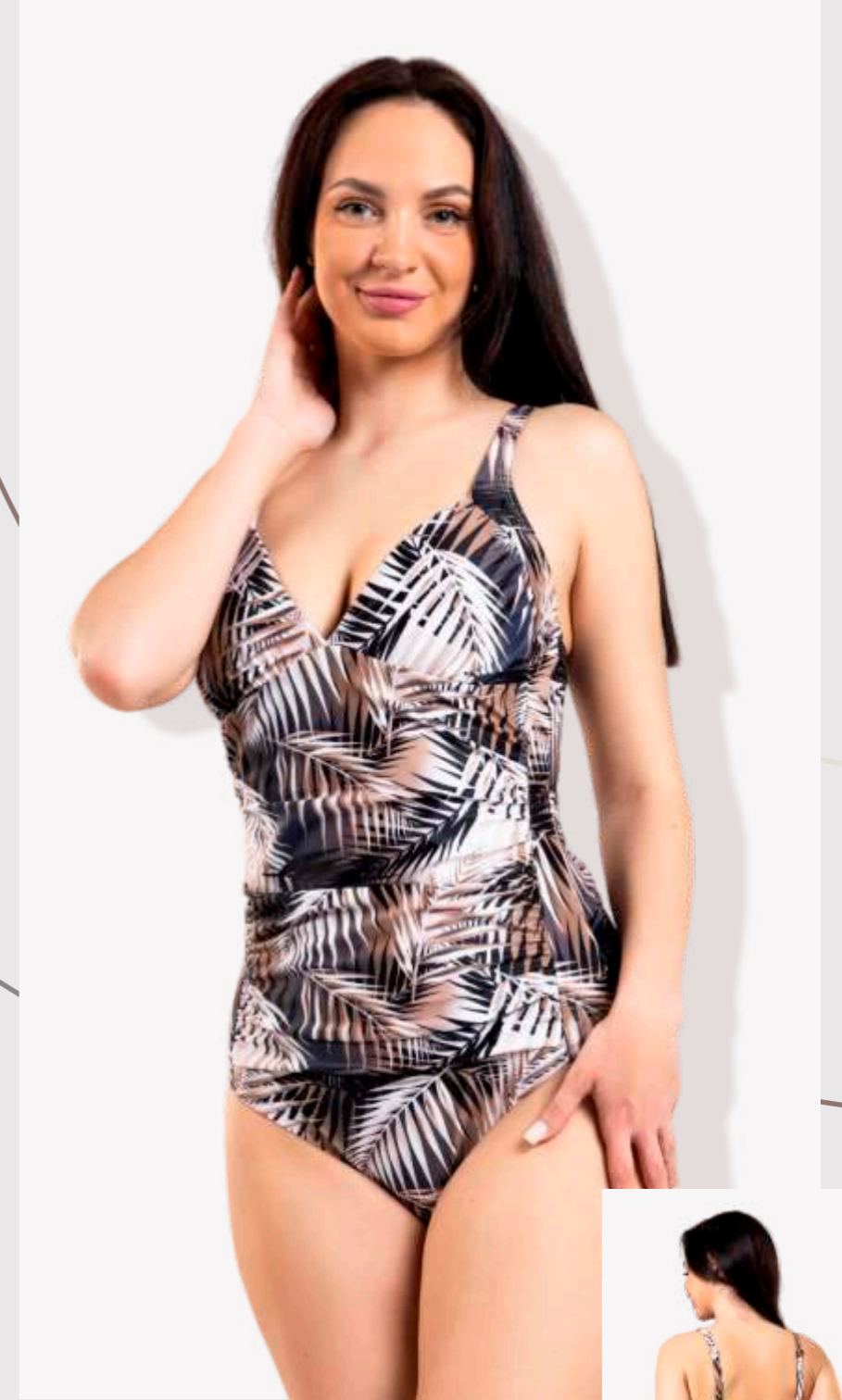
38-44



Elegant swimsuit made of smooth fabric with a print of sandy-chocolate brown shades with a pattern of palm leaves will highlight tanned skin. The upper part of the swimsuit is comfortable without wires inside, removable molded cups. On the panties will be sides with ties

T25-4141

38-44



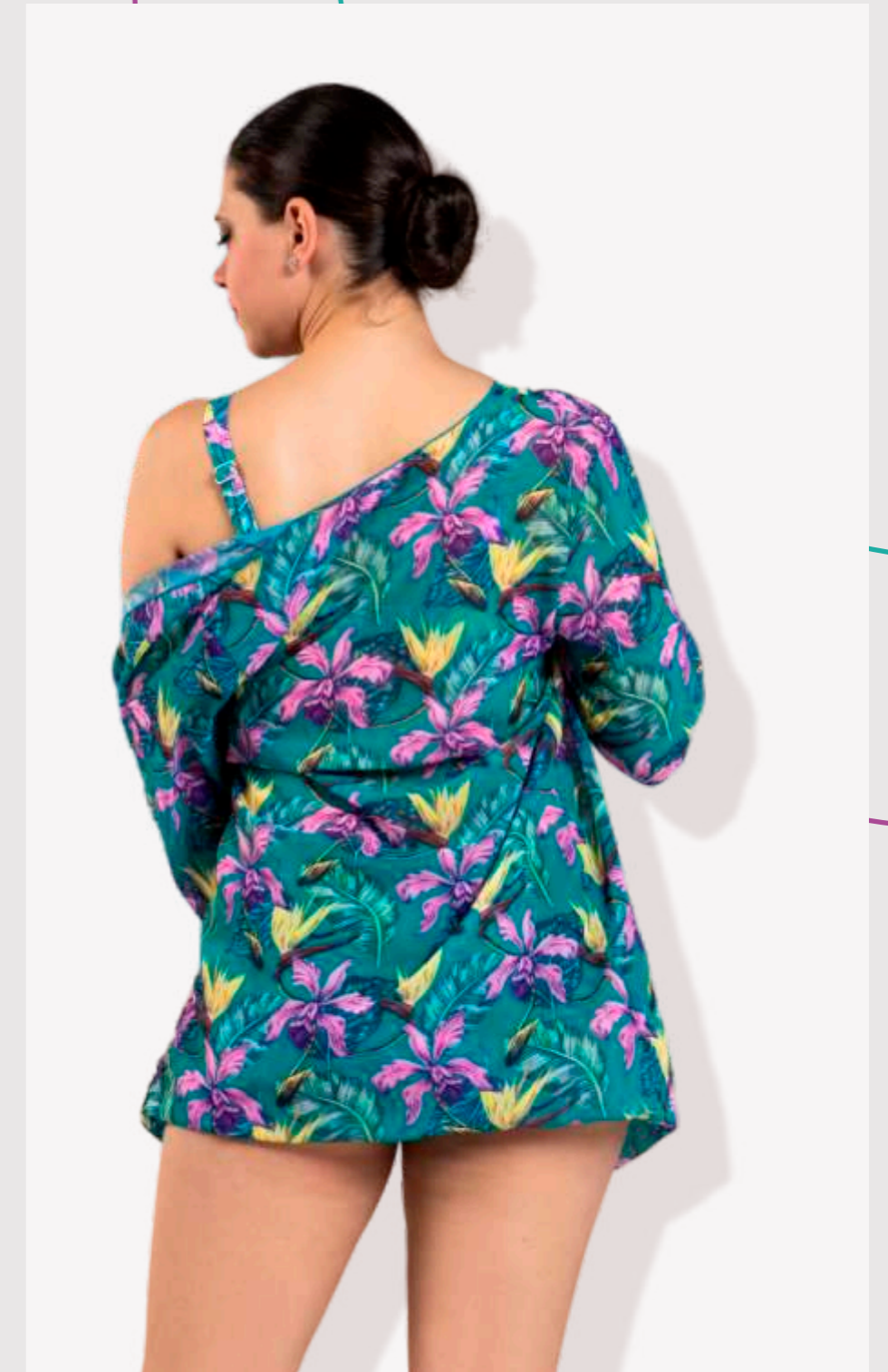
Elegant swimsuit made of smooth fabric with a print of sandy-chocolate brown shades with a pattern of palm leaves will highlight tanned skin. The upper part of the swimsuit is comfortable without wires inside, removable molded cups. On the front of the swimsuit there is a drapery on the side that can hide a tummy




TROPICANA
SINCE 2000

N25-6452

M-XL



The print is the same as on the main part of the group. Swing tunic made of chiffon can be maxy long or hip-length

Tropical Orchid

N25-6420

40-48D



The swimsuit combined from printed and plain fabric. The upper part of the swimsuit is a soft cups with deep moulded cups, wireless. The decorative drapery on the front part. Panties can be adjusted in height on the sides using spaghetti

N25-6462

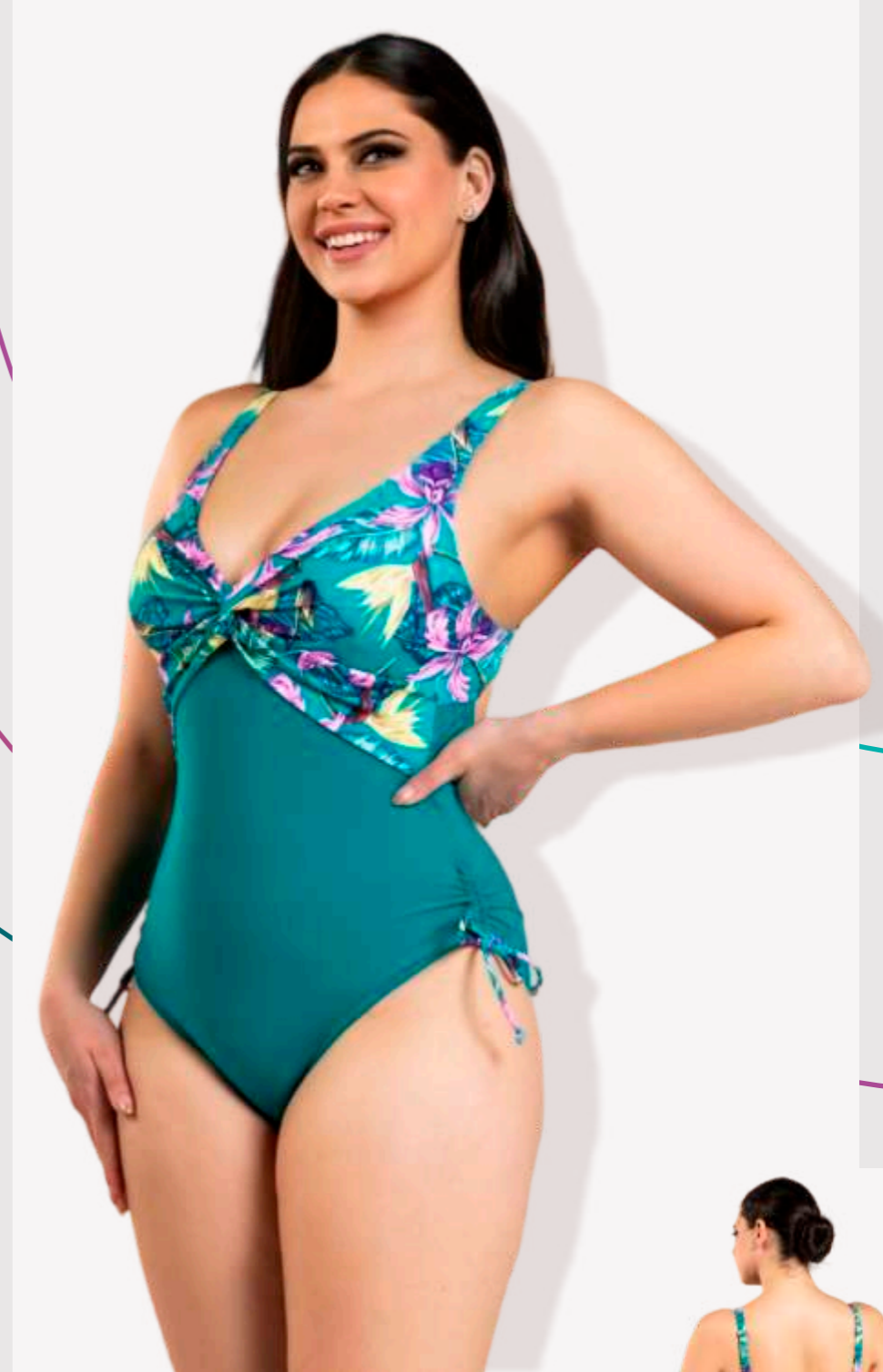
40-48D



The swimsuit combined from printed and plain fabric. The upper part of the swimsuit has a molded cup, a semi-balconette perfectly holds the shape of the breasts along the front, drape. The base under the cups is also lined with molded foam so the breast support is excellent. Panties can be adjusted in height on the sides using spaghetti

N25-6440

40-48D

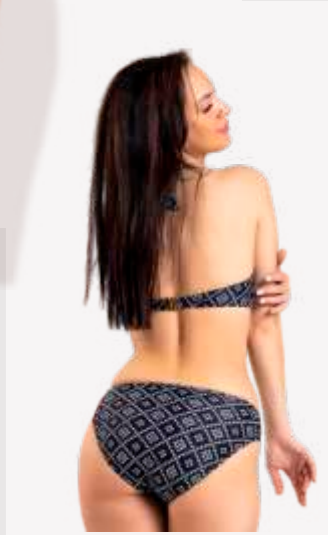
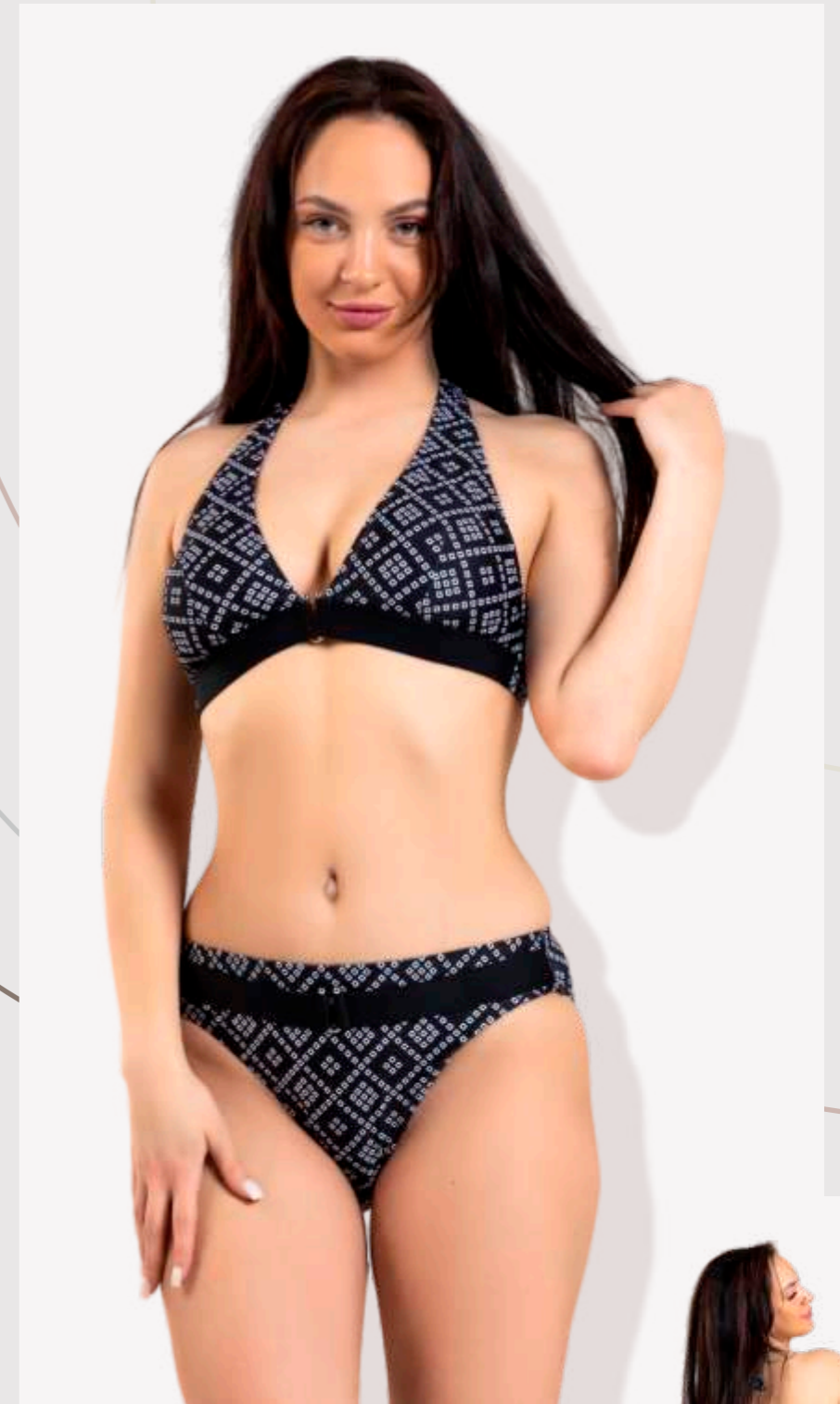


The swimsuit combined from printed and plain fabric. The upper part of the swimsuit is a soft cups with moulded cups, wireless. The decorative drapery on the front part



S25-0314

38-46



Swimsuit made of printed fabric in combination with plain black is the standard of elegance; the geometric pattern is a discreet classic and at the same time emphasizes the figure and femininity. Swimsuit with slimming lines of the silhouette. The panties with a belt and a metal buckle in the center of the belt, the same as on the top of the swimsuit

Diamond Cells

S25-0366

38-48C



Swimsuit made of printed fabric in combination with plain black is the standard of elegance; The geometric pattern is a discreet classic and at the same time emphasizes the figure and femininity. The top part is a bra with a deep molded cup and a wires. At the front are decorative ties; The panties with a decorative yoke; an imitation belt; The pattern of this swimsuit has been a bestseller for several years

S25-0343

38-46



Swimsuit made of printed fabric in combination with plain black is the standard of elegance; the geometric pattern is a discreet classic and at the same time emphasizes the figure and femininity. Swimsuit with slimming lines of the silhouette. The upper part of the swimsuit is comfortable triangles with wide straps and molded cups inserts. The black art and a metal accessory in the center that is the accent of this style.

S25-0340

40-50



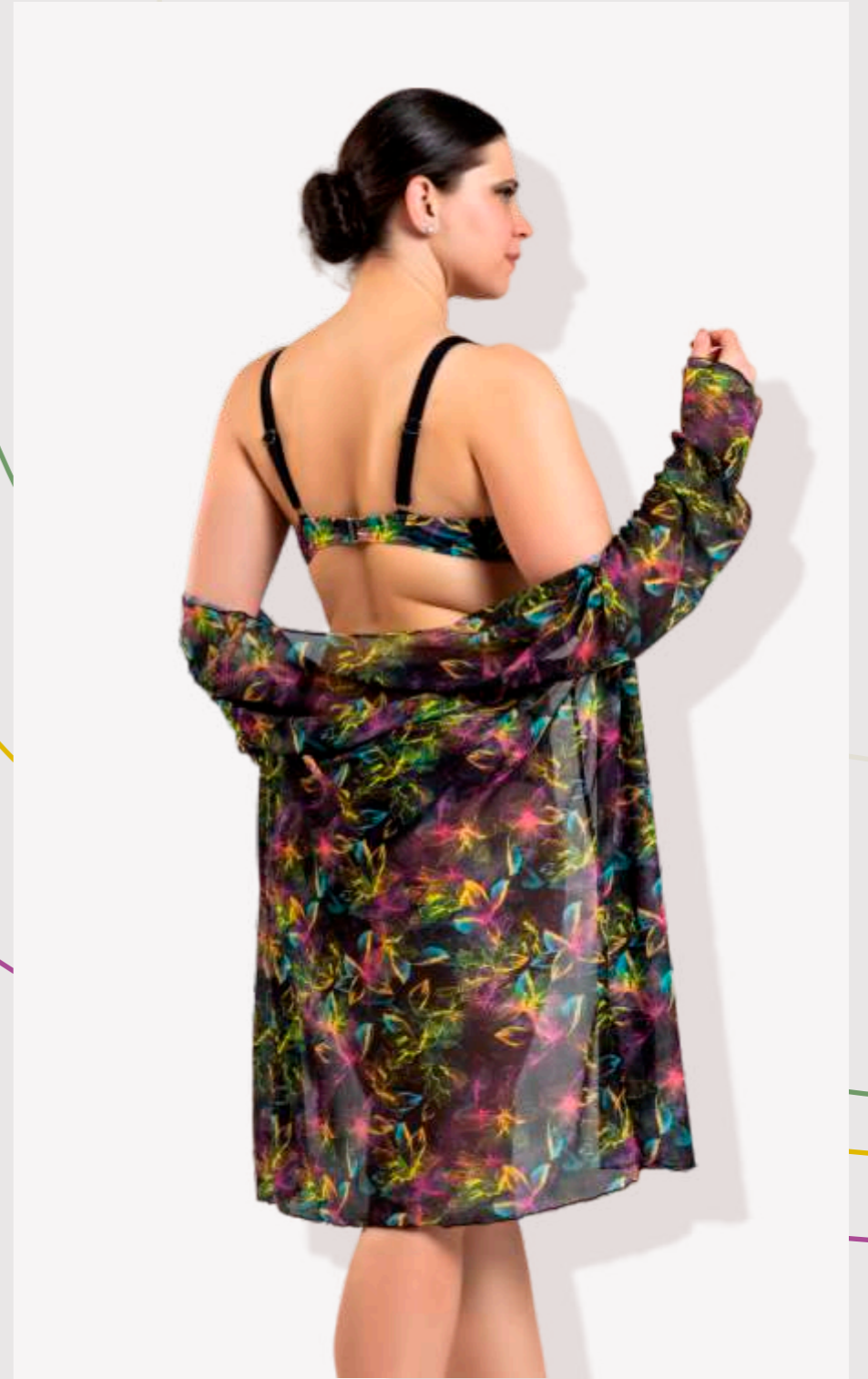
Swimsuit made of printed fabric in combination with plain black is the standard of elegance; the geometric pattern is a discreet classic and at the same time emphasizes the figure and femininity. Swimsuit with slimming lines of the silhouette.




TROPICANA
SINCE 2000

N25-6152

M-XL



The print is the same as on the main part of the group. Swing tunic made of soft mesh can be long or hip-length

Neon Abstraction

N25-6162

40-48D



The swimsuit combined from printed and plain fabric. The upper part of the swimsuit deep balconette moulded cup perfectly supports the breasts. The bottom is the swimsuit classic medium waist panties.

N25-6122

40-48D



The swimsuit combined from printed and plain fabric. The upper part of the swimsuit is a soft bra with inserts moulded cups that can be taken out, the wires. The decorative ring on the front, it is comfortable. High waist panties with drapery on the front part.

N25-6140

40-48D



The swimsuit combined from printed and plain fabric. The upper part of the swimsuit is a soft cups with moulded cups, wireless. The decorative drapery on the front part.

Gold Navy Glamour

S25-0460

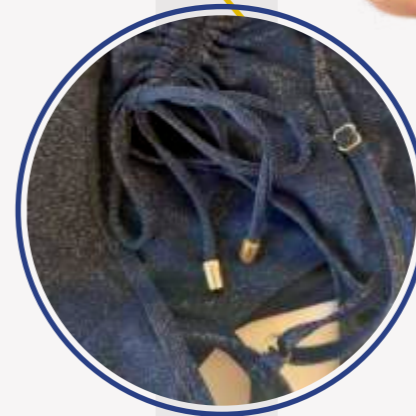
38-46



Swimsuit made of easy-to-dry fabric with a slight shine, golden thread, pleasant soft to the touch. Top with wires, light molded cup without thickening. Thin straps classic panties with processing hidden inside

S25-0462

38-48 C



Swimsuit made of easy-to-dry fabric with a slight shine, golden thread, pleasant soft to the touch. Top part thin deep cup that can be adjusted in height with an internal drawstring inside. The liner molded cup. Panties can be adjusted in height on the sides using spaghetti

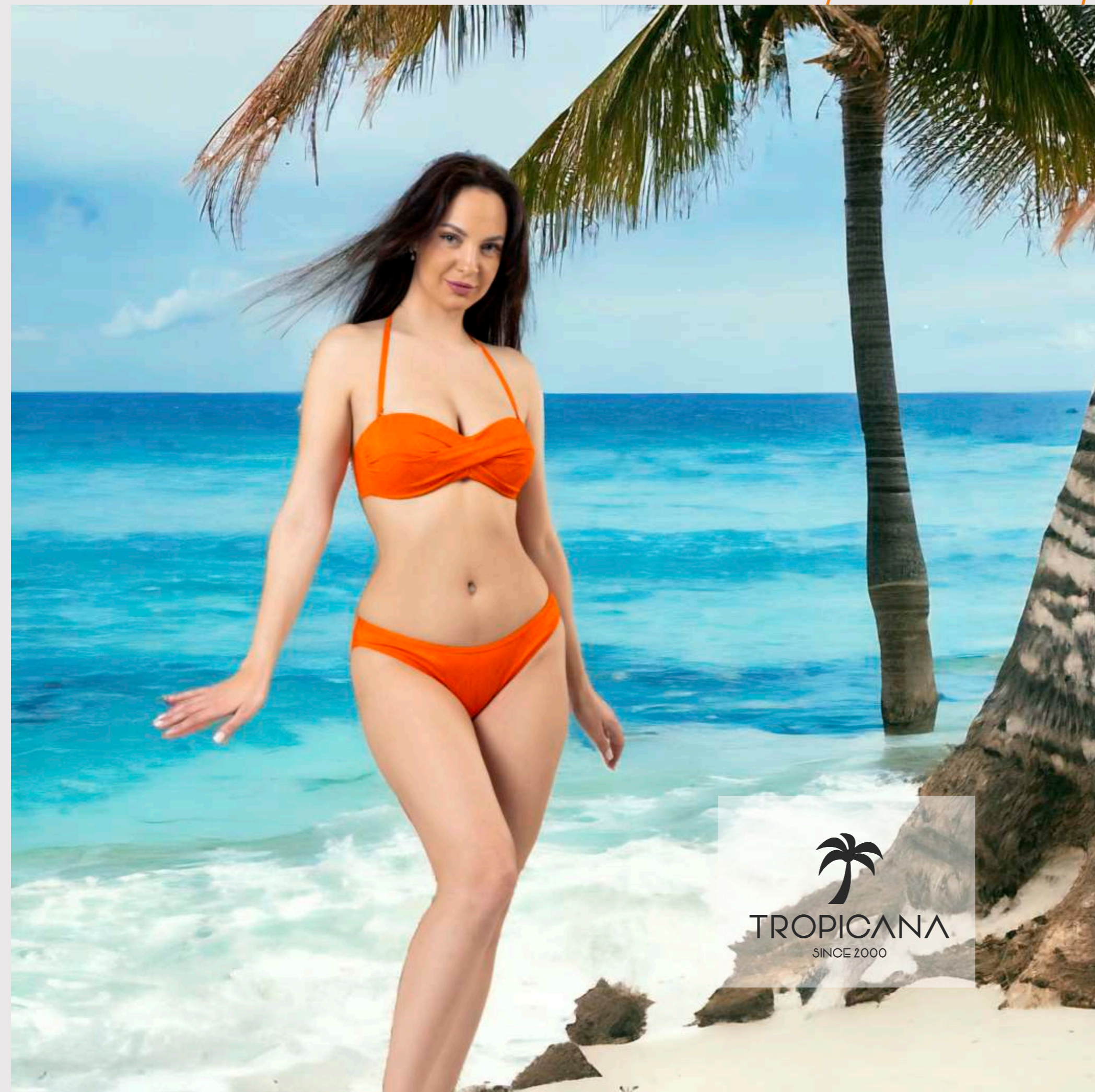
S25-0443

38-46



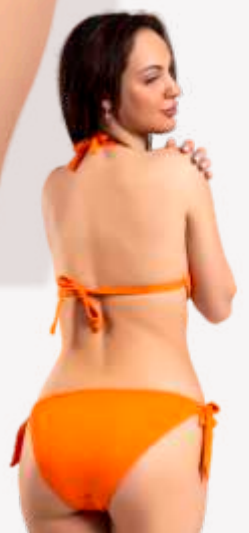
Swimsuit made of easy-to-dry fabric with a slight shine, golden thread, pleasant soft to the touch. One-piece comfortable swimsuit. Inserted molded cups triangles up, adjustable double spaghetti. On the belt, there are golden buckle that can be moved to the center or side





W25-3314

38-44

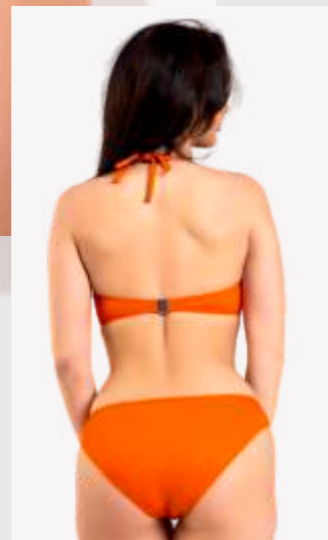


Bright orange jacquard fabric is soft to the touch with an interesting zigzag texture. The decorative accessory is a golden shell on the center. The top Swimming bra with inner liners molded cups are very comfortable and lightweight, the cups have open wires that are very comfortable. The bottom with ties on the sides

Orange Mood

W25-3315

38-44



Bright orange jacquard fabric is soft to the touch with an interesting zigzag texture. In the center front decorative accessory gold shell. Comfortable one-piece swimsuit with thin straps

W25-3322

38-46



Bright orange jacquard fabric is soft to the touch with an interesting zigzag texture. In the center front decorative accessory gold shell. Top - soft bra with a deep cup with draping with a small wire Insertable molded cups Inside The bottom are classic midwaist briefs

W25-3341

40-48



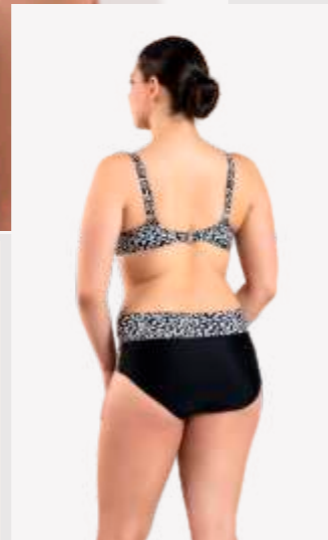
Bright orange jacquard fabric is soft to the touch with an interesting zigzag texture. In the center front decorative accessory gold shell. Comfortable one-piece swimsuit

Elegant Animal

Can produce cups CDEFG If the size order is 100 pcs per size

L25-2416

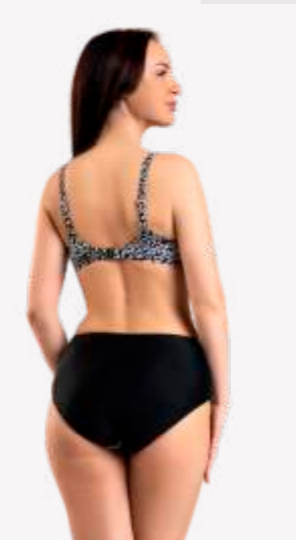
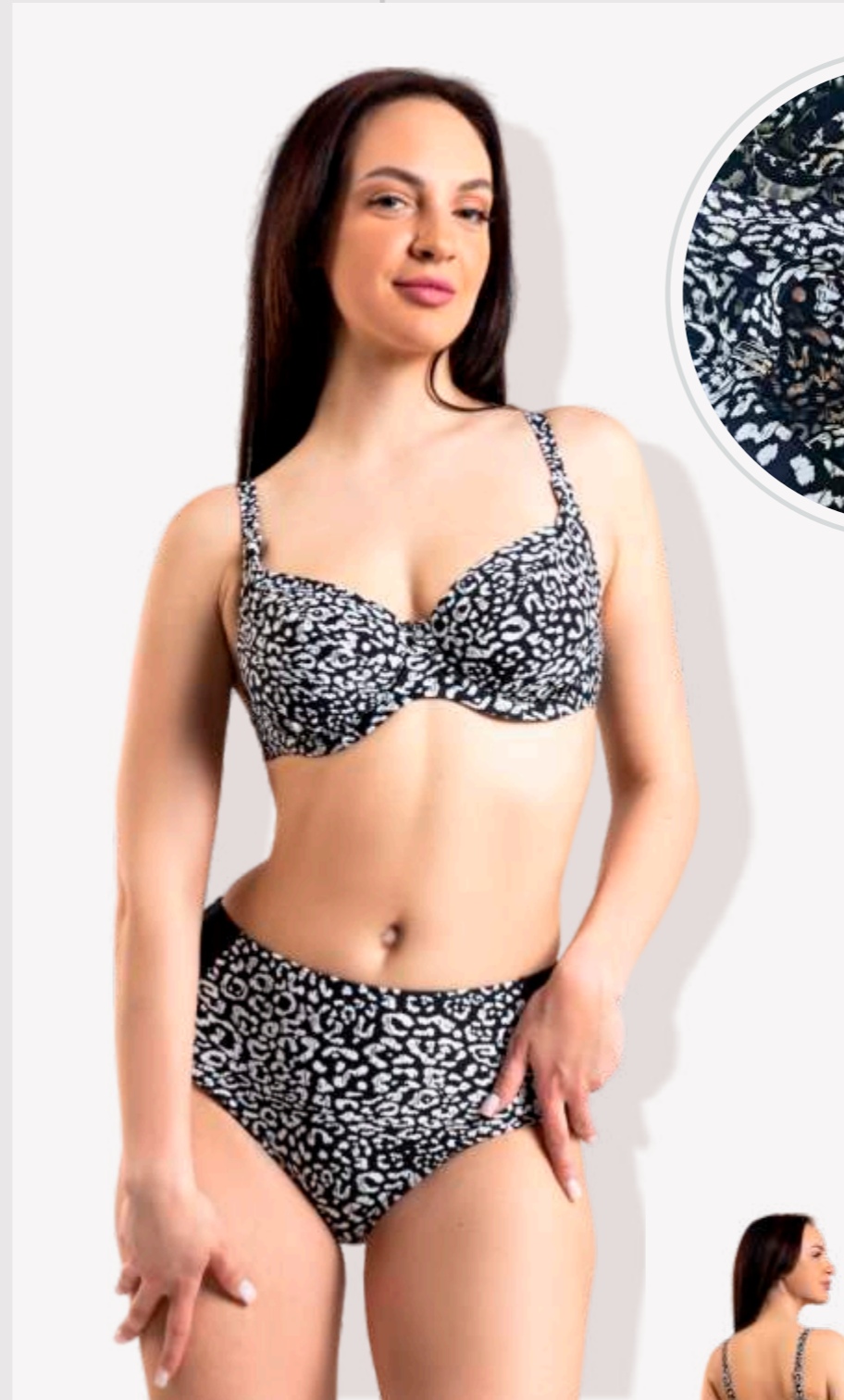
40 -50D



The upper part is a foamed bra with a threepart cup; elastic wires specially designed for large sizes and wide wings hold large, heavy breasts well; High panties with a double waist part on top that can be worn in two positions, lifting up and lowering down.

L25-2420

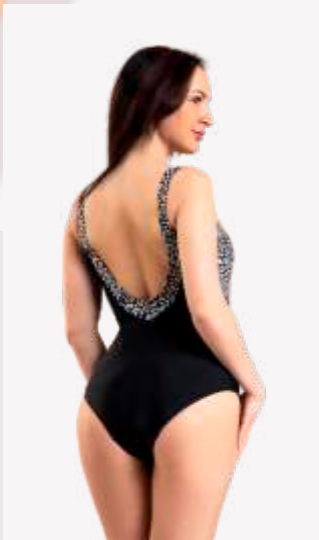
40 -50D



The top part is a plain bra with a deep cup and powernet lining; elastic wires specially designed for large sizes and wide wings hold large, heavy breasts well; On the strips possible silver buckles. High bottom with lines that slim the silhouette and perform the function of shaping panties.

L25-2440

40 -50D

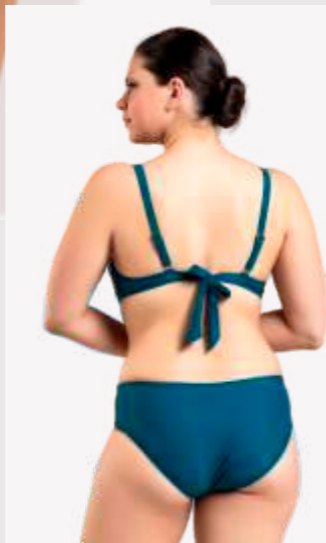


The asymmetrical front part of which is made of printed fabric, it creates comfort slimming silhouette. The design is thought out to support the large heavy breast of the front part and at the same time the open back allows you to sunbathe and swim comfortably. There is a metal buckle on the belt that emphasizes the high waistline.

Rich Azure

N25-6362

40-48



Solid color swimwear, soft material . The upper part of the swimsuit has a molded cup, a semi-balconette perfectly holds the shape of the breasts along the front, drape.The base under the cups is also lined with molded foam so the breast support is excellent. Mid-rise classic panties,

N25-6366

40-48D



Solid color swimwear, soft material. Two-piece swimsuit for plus size cups breast. Deep cup design made of three parts of foam. It is stable and supports the breast. In the center of the middle there is a decorative element of a gold bead
Bottom - panties high with front drapeyeight on the sides using spaghetti

N25-6341

40-48



Solid color swimwear, soft material . The upper part of the swimsuit has a molded cup, a semi-balconette perfectly holds the shape of the breasts Along the front there is drape.The base under the cups is also lined with molded foam so the breast support is excellent.

Neon Joke

W25-3214

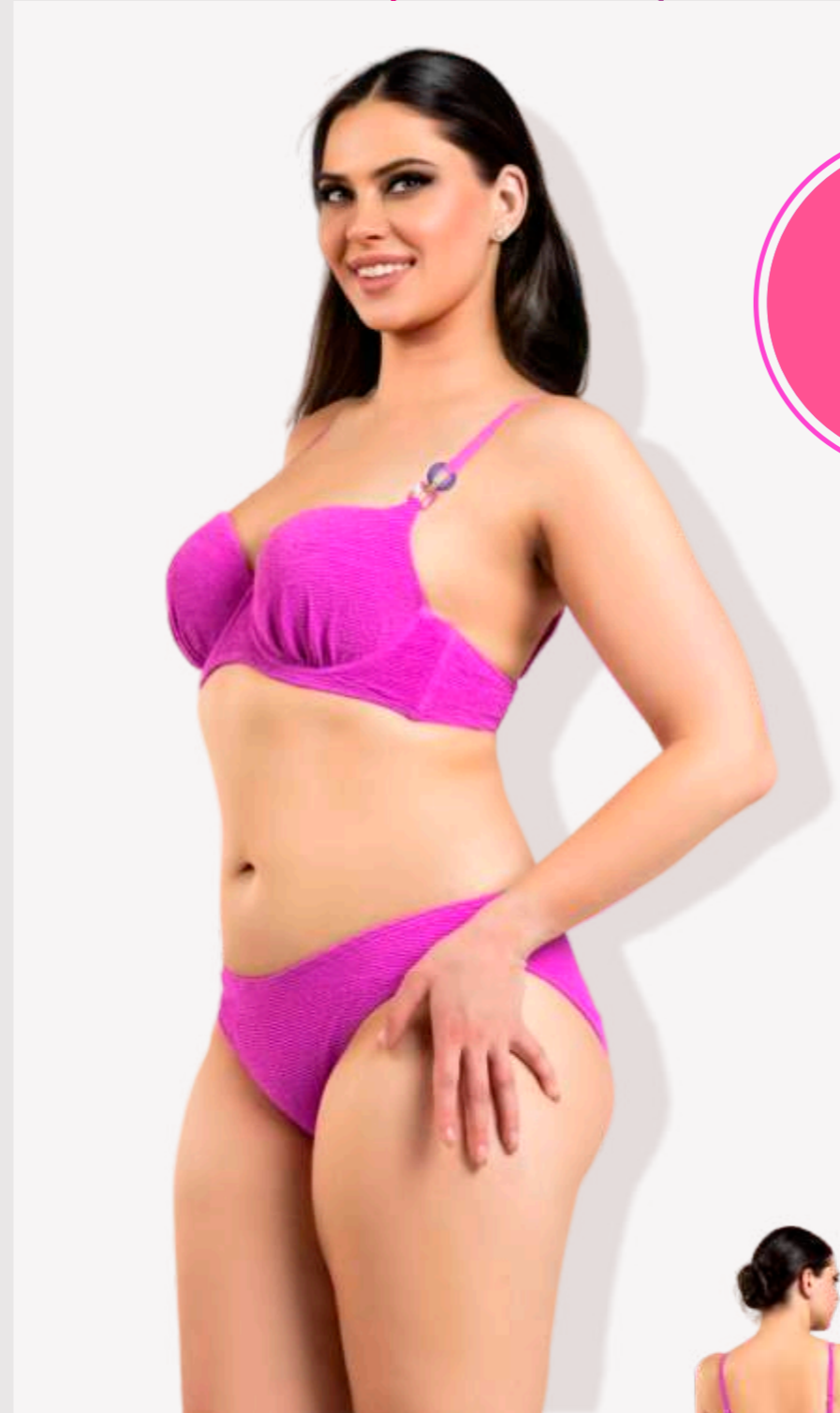
38-44



Bright neon swimsuit in two colors options. Triangle swimsuit inside are cups a molded cup inserts. The accessories on the straps, the bright mother-of-pearl buckles connected by a strong metal ring. Panties also have buckles on the sides

W25-3262

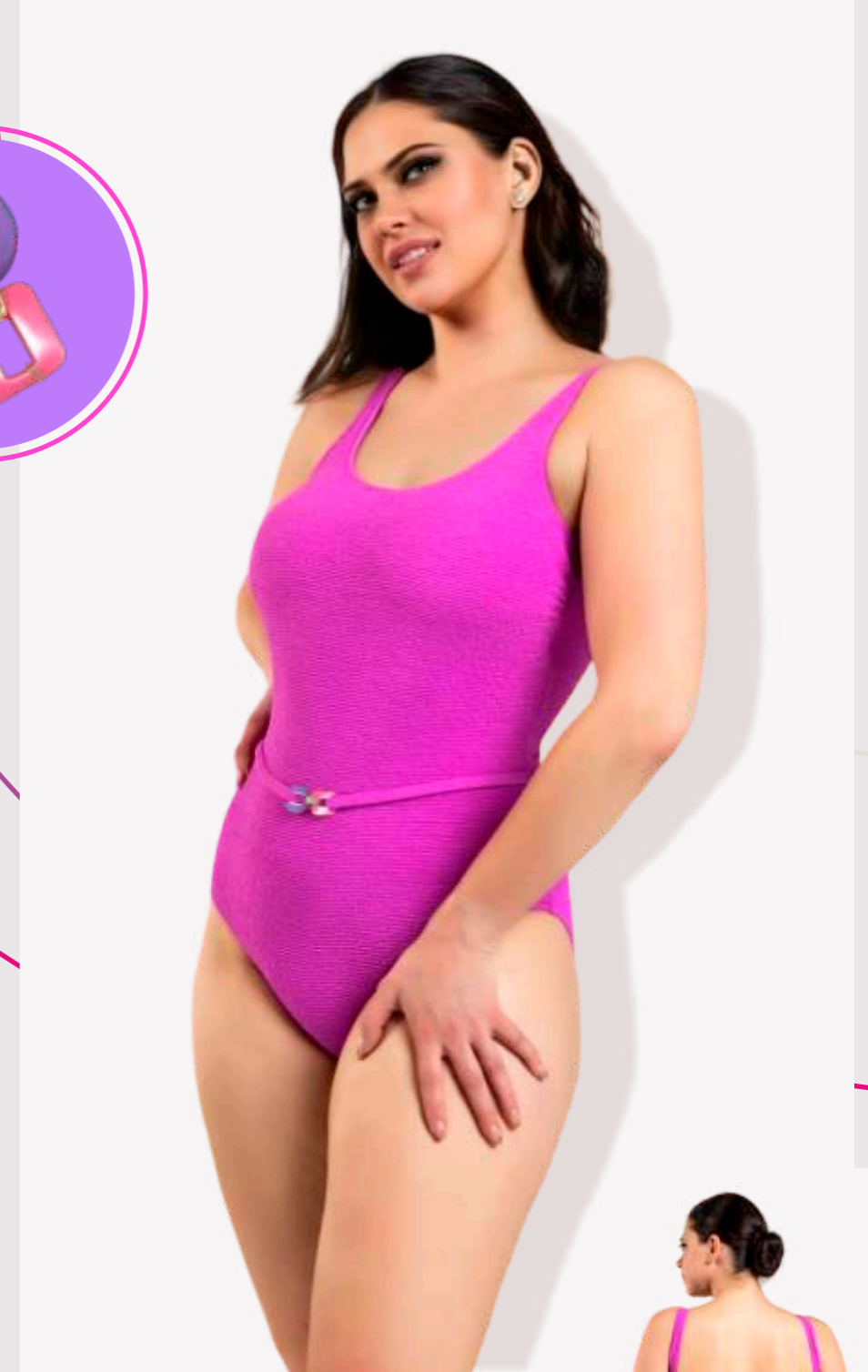
38-46



Bright neon swimsuit in two colors options. The top is classic balconette bra with molded cups and wire Buckles on straps made of two-color strong plastic in bright mother-of-pearl rings fastened together with a metal ring. Panties midwaist classic

W25-3240

38-46



Bright neon swimsuit in two colors options. Swimsuit comfortable for the pool and resort under the bust comfortable molded cups sewn, under the bust with a thick elastic band Buckle on belt made of two-color strong plastic in bright mother-of-pearl rings fastened together with a metal ring.

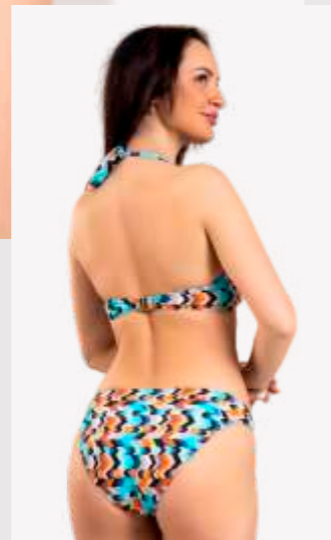
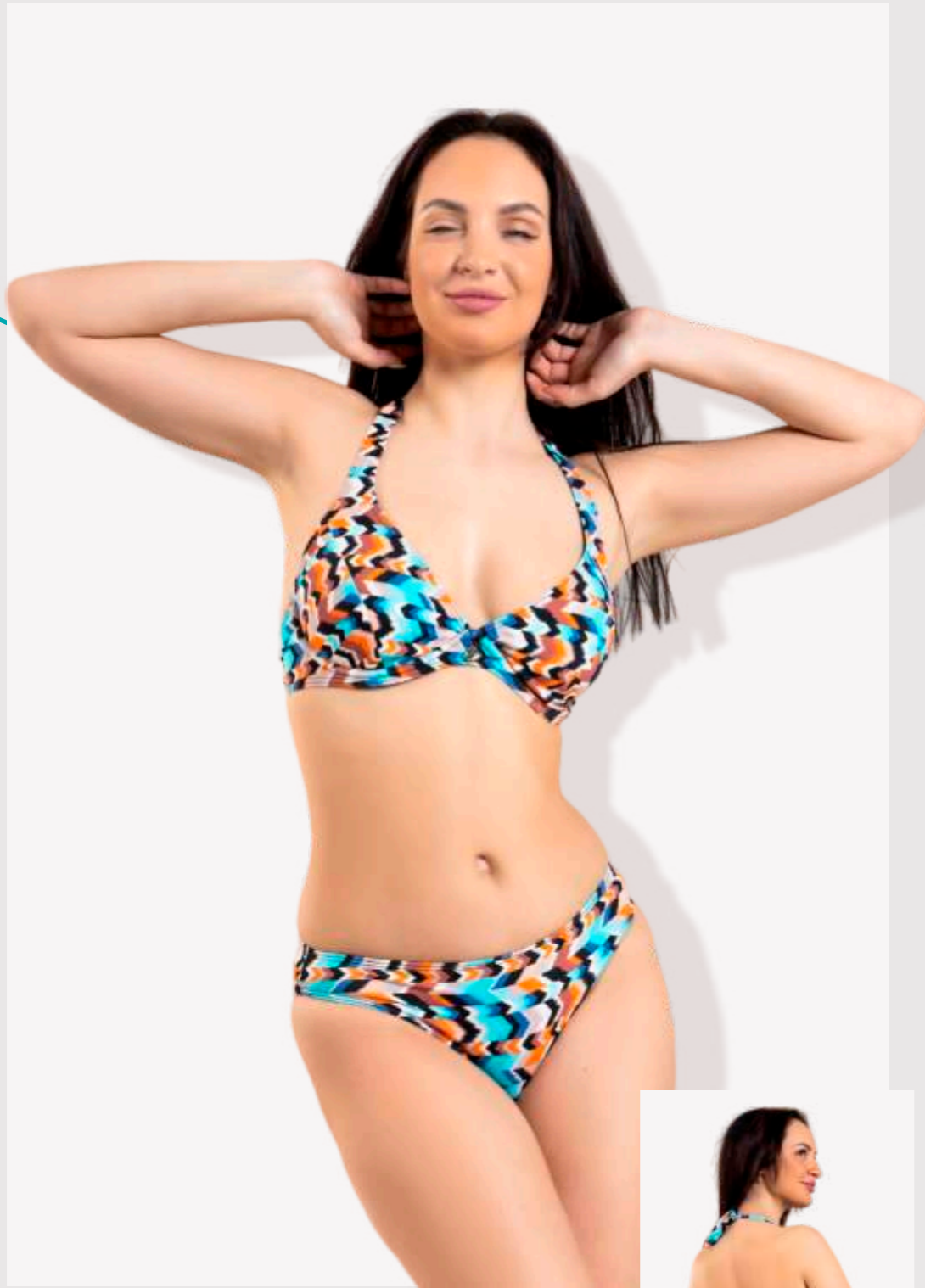


Mosaic

Can produce cups CDEFG If the size order is 100 pcs per size

L25-2124

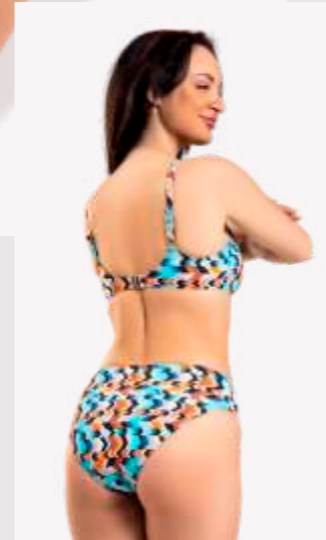
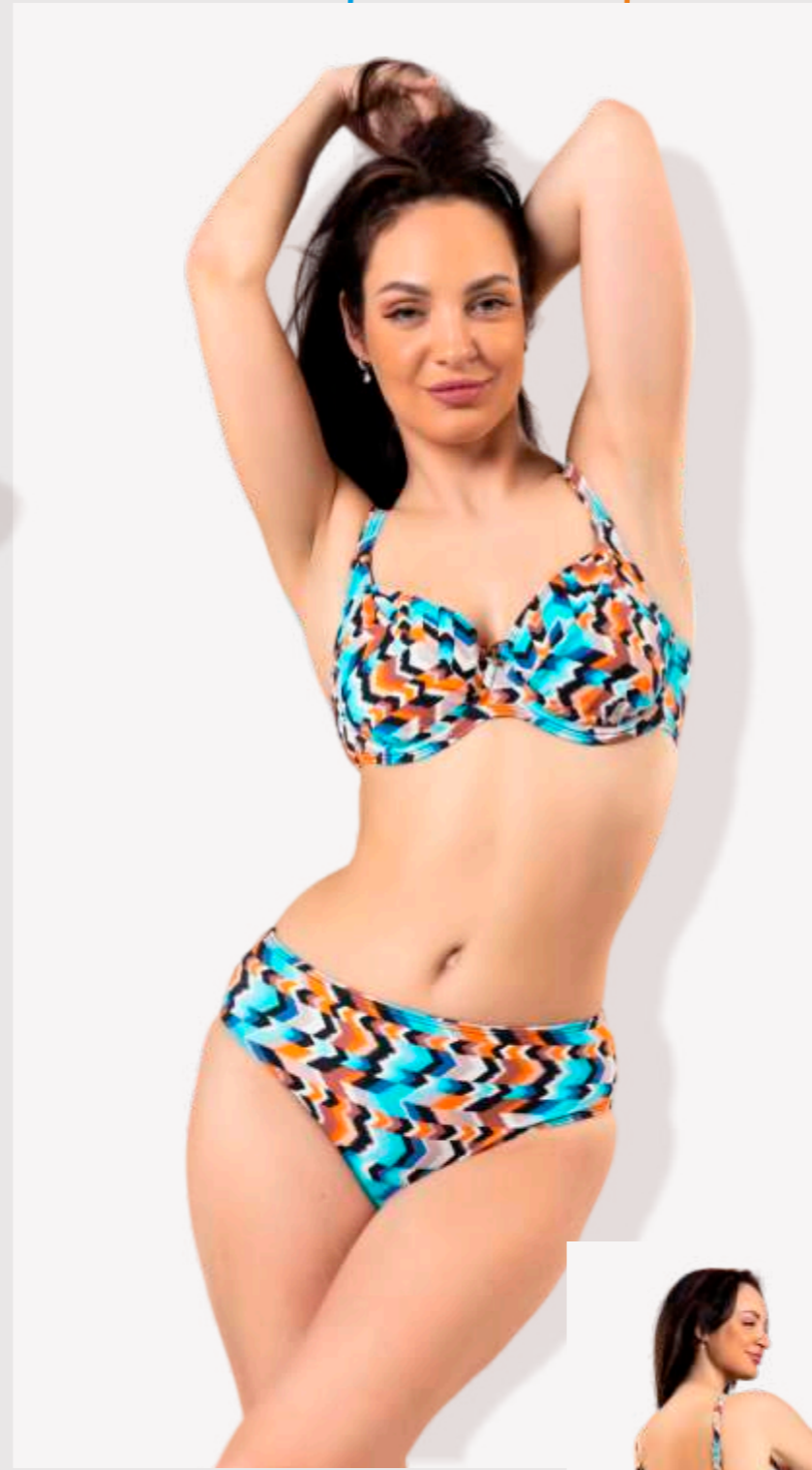
40-50D



Swimsuit made of printed smooth fabric Possible gold decor on the middle part. Top part open plain deep cup for large breast and open shape wires. The inner layer power mesh The vertical seam and open decollete comfortable for sunbathing.

L25-2120

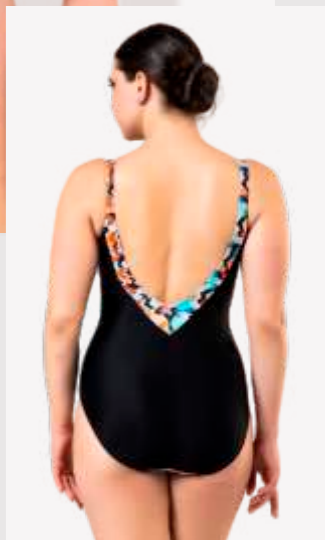
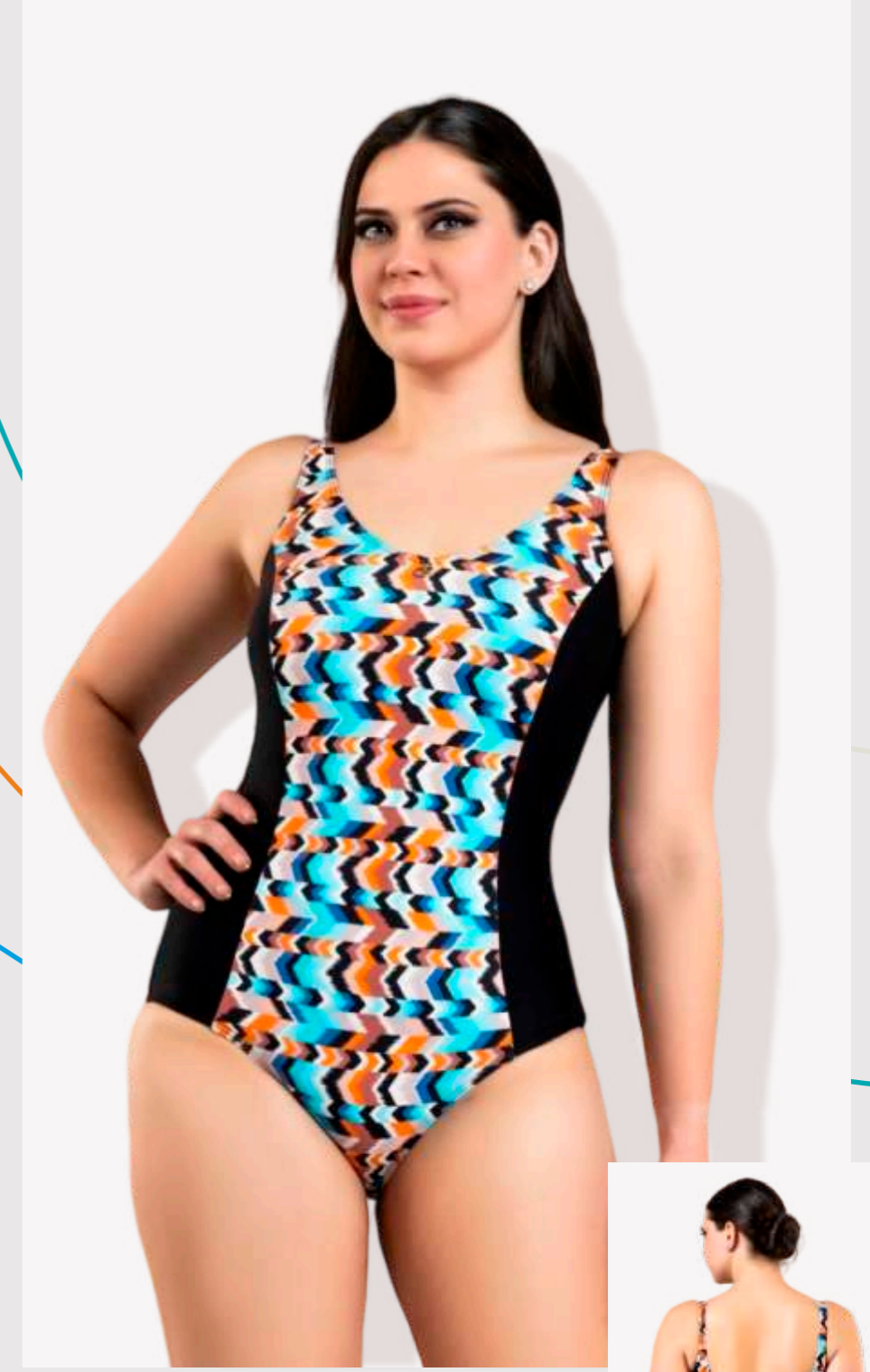
40-50D



Swimsuit made of printed smooth fabric Possible gold decor on the middle part. Top part is plain deep cup for large breast and deep wires. The inner layer by power mesh. Bottom classic middlewaist panties.

L25-2140

40-50D



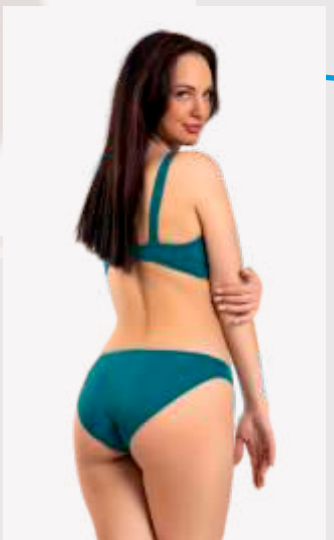
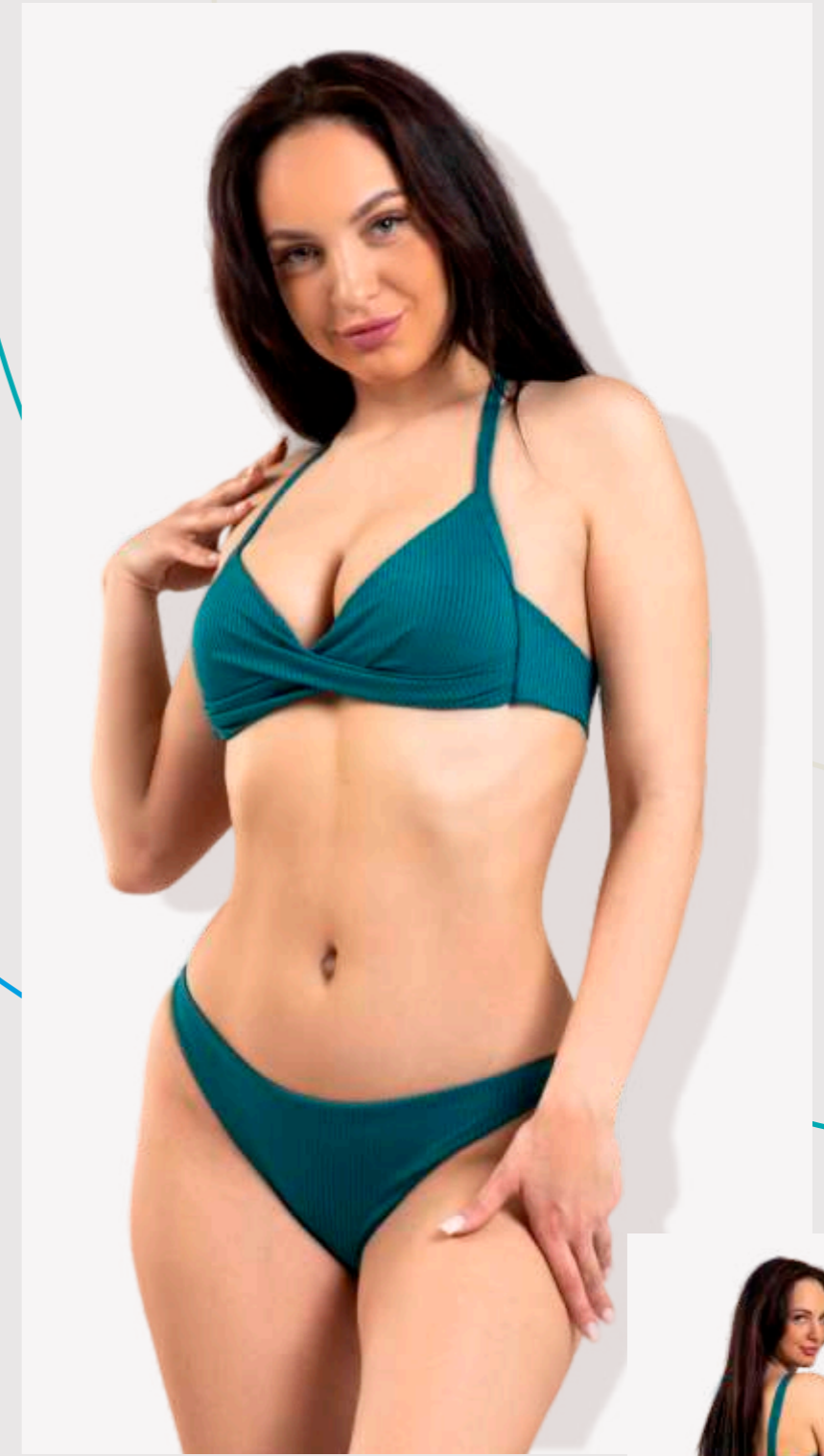
One-piece swimsuit the front part is printed smooth fabric The design shape the body and create a slender silhouette The open back allows to tan and at the same time is thought out so that it holds a heavy chest and hold while swimming




TROPICANA
SINCE 2000

S25-0512

38-44

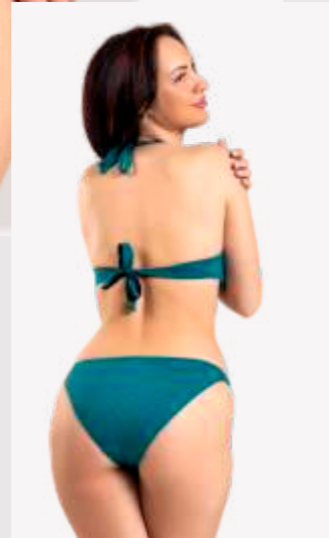


Swimsuit made from an elegant lightweight striped jacquard fabric with a pleasant touch quick-drying soft jacquard
Swimsuit top half-cup open on a molded cups. The mid-high bikini briefs

Jacquard Striped

S25-0565

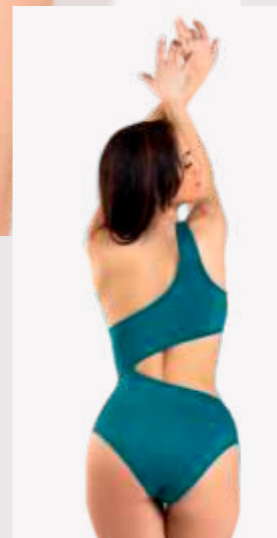
38-46



Swimsuit made by an elegant lightweight striped fabric with a pleasant touch quick-drying soft jacquard. Comfortable bra without wire inside insert molded cup. Mid-waist panties

S25-0540

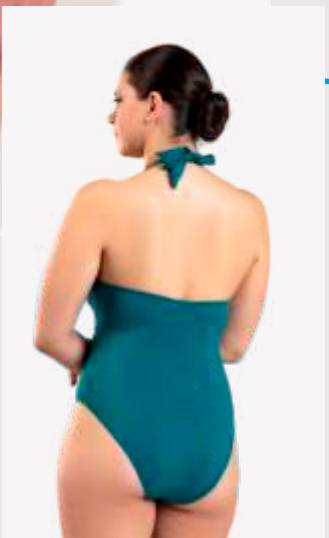
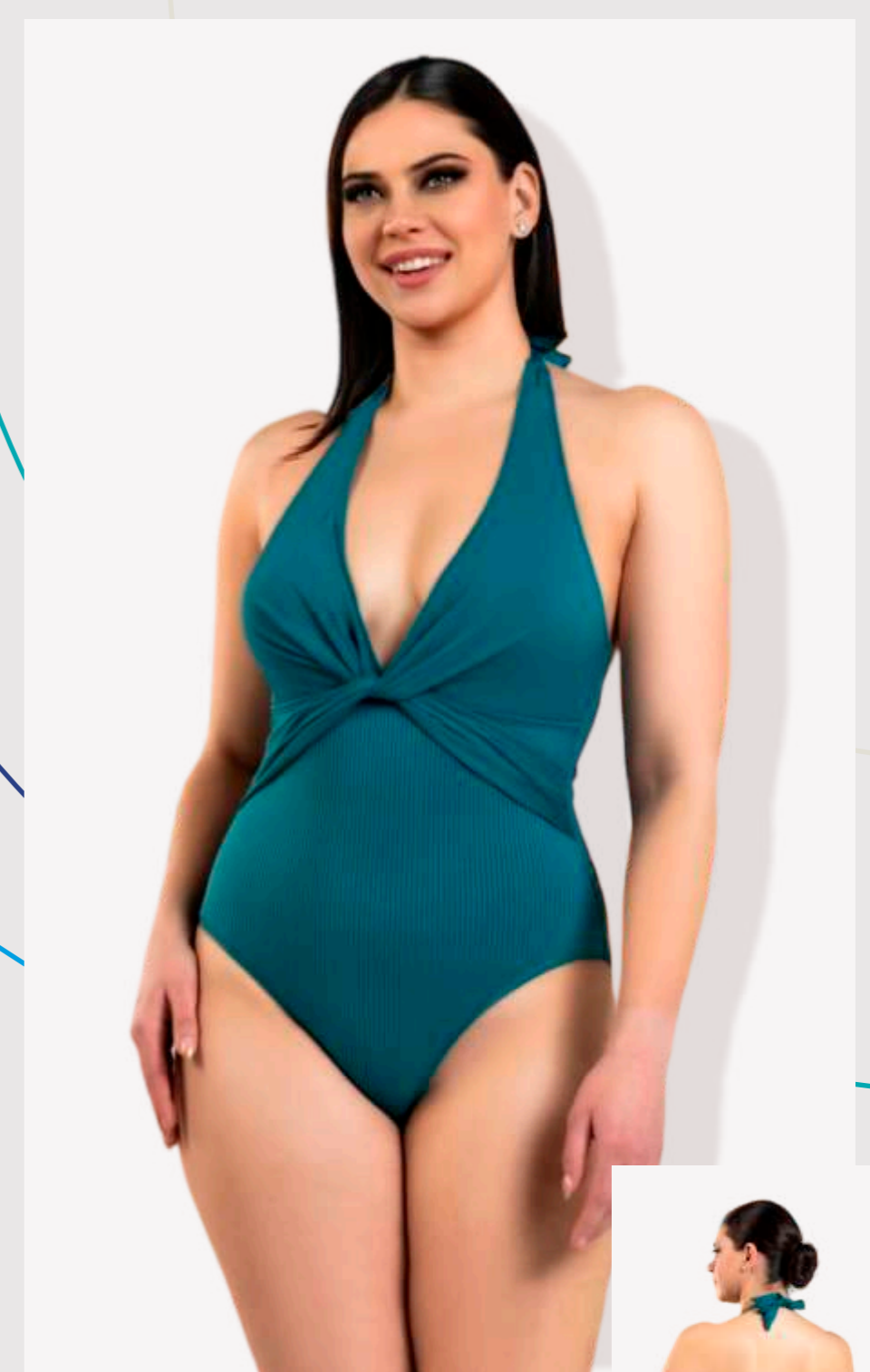
38-44



Swimsuit made by an elegant lightweight striped fabric with a pleasant touch quick-drying soft jacquard. One-piece swimsuit, asymmetrical, trendy idea. Comfortable on the beach and in the pool. Inside detachable moulded cups

S25-0543

38-46



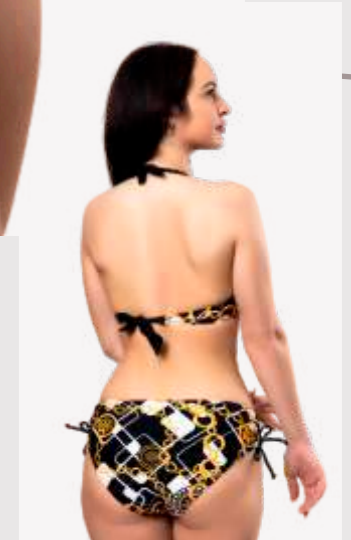
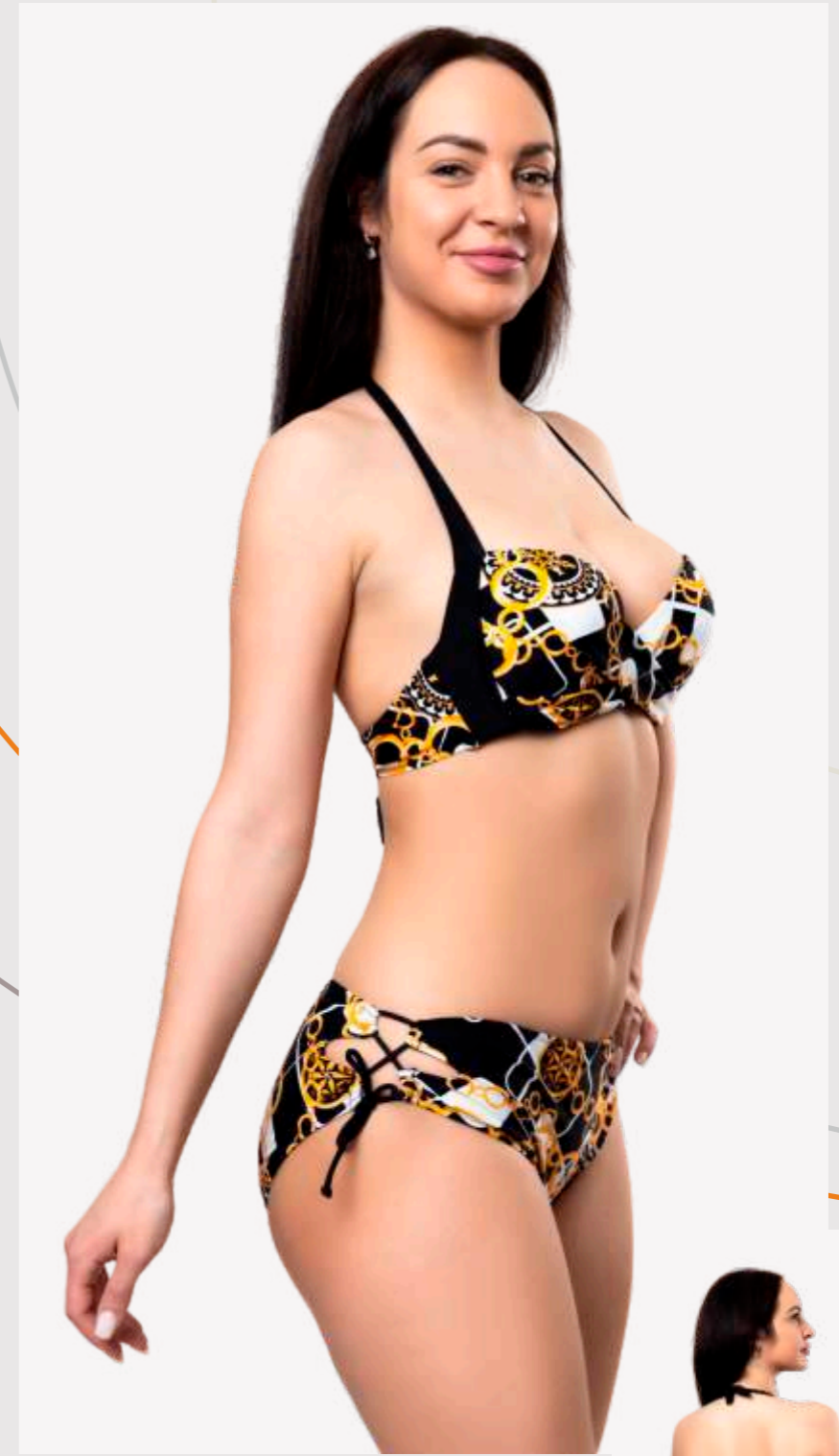
Swimsuit made by an elegant lightweight striped fabric with a pleasant touch quick-drying soft jacquard. One-piece swimsuit, drapery on the middle part. Comfortable on the beach and in the pool. Inside detachable moulded cups




TROPICANA
SINCE 2000

A25-1861

38-44

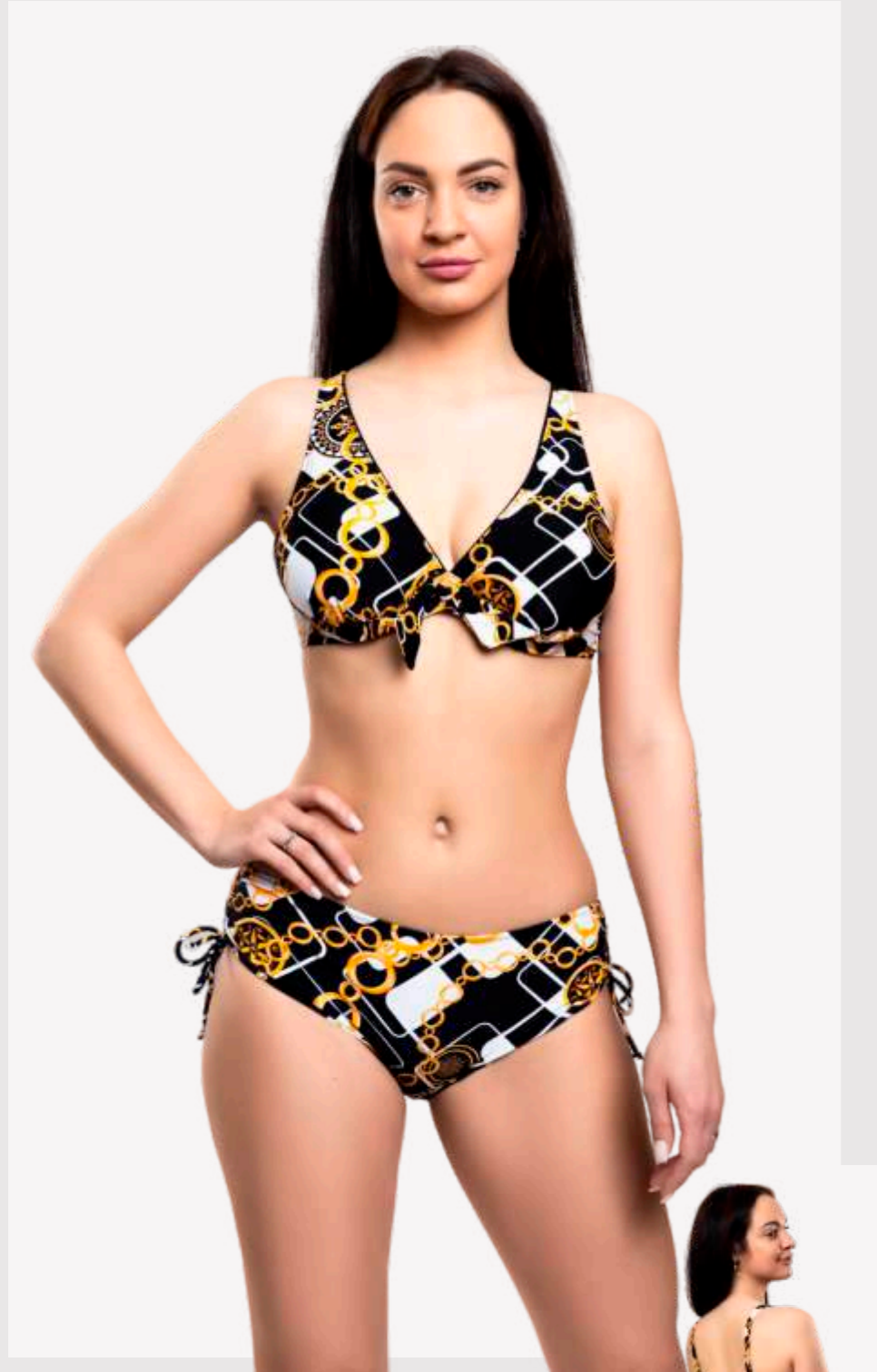


Swimsuit made of smoth printed fabric.
Top with push up moulded cup , wires.
panties with decorative side holes.
Can adjust the height of the panties using the spaghetti on the sides

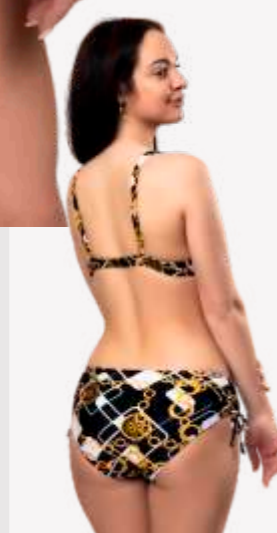
Treasure Island

A25-1822

38-46C

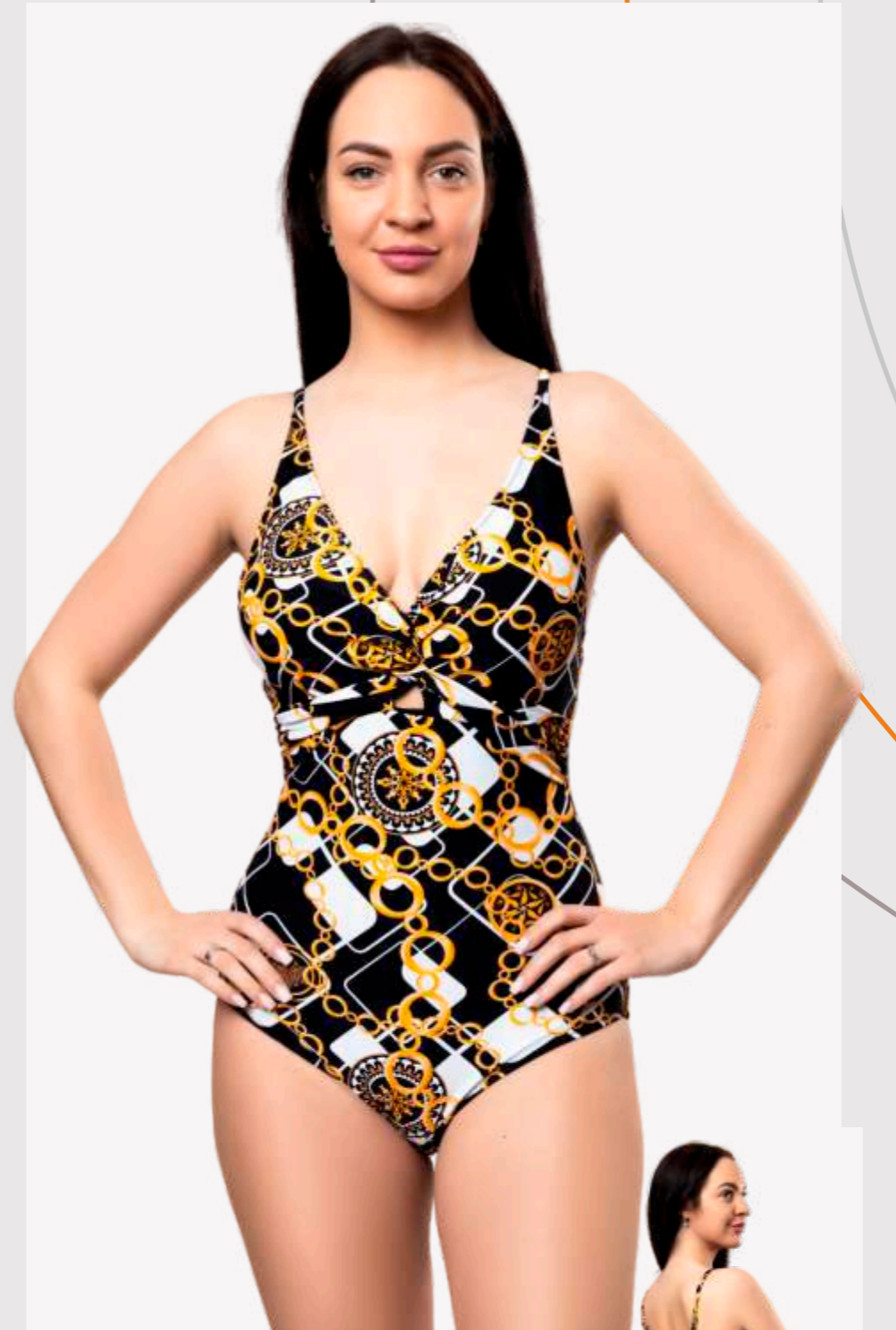


Swimsuit made of smooth printed fabric. Top with deep cup and molded cup inserts, open wires. Can adjust the height of the panties using the spaghetti on the sides

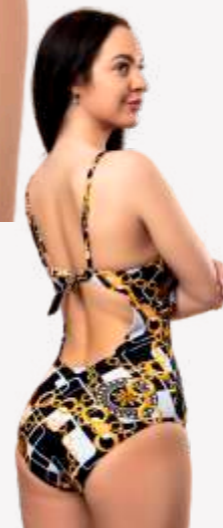


A25-1841

38-46

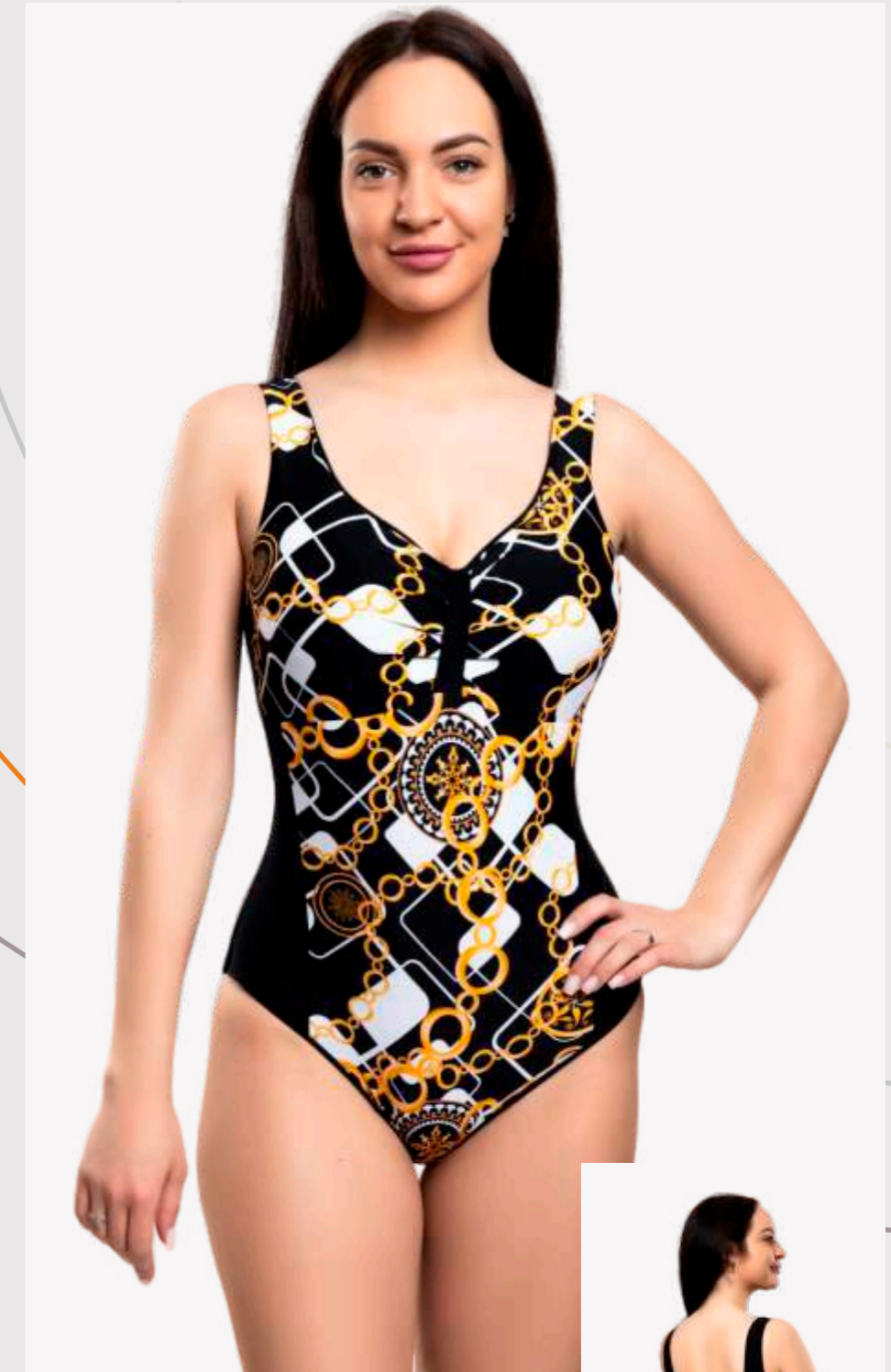


Swimsuit made of smooth printed fabric. One-piece swimsuit without wires. Drapery on the front and the molded cups and the center draping. Comfortable for a beach holiday

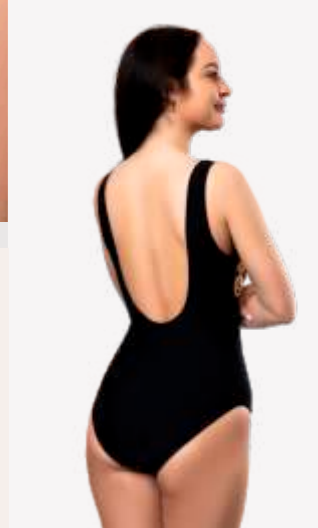


A25-1840

38-48



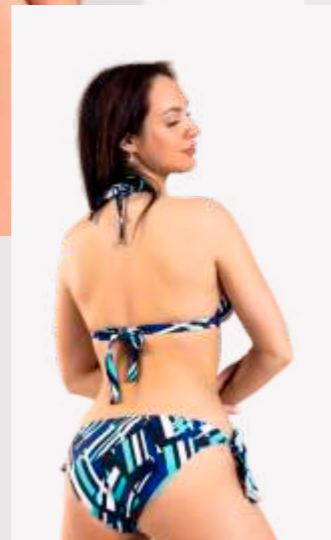
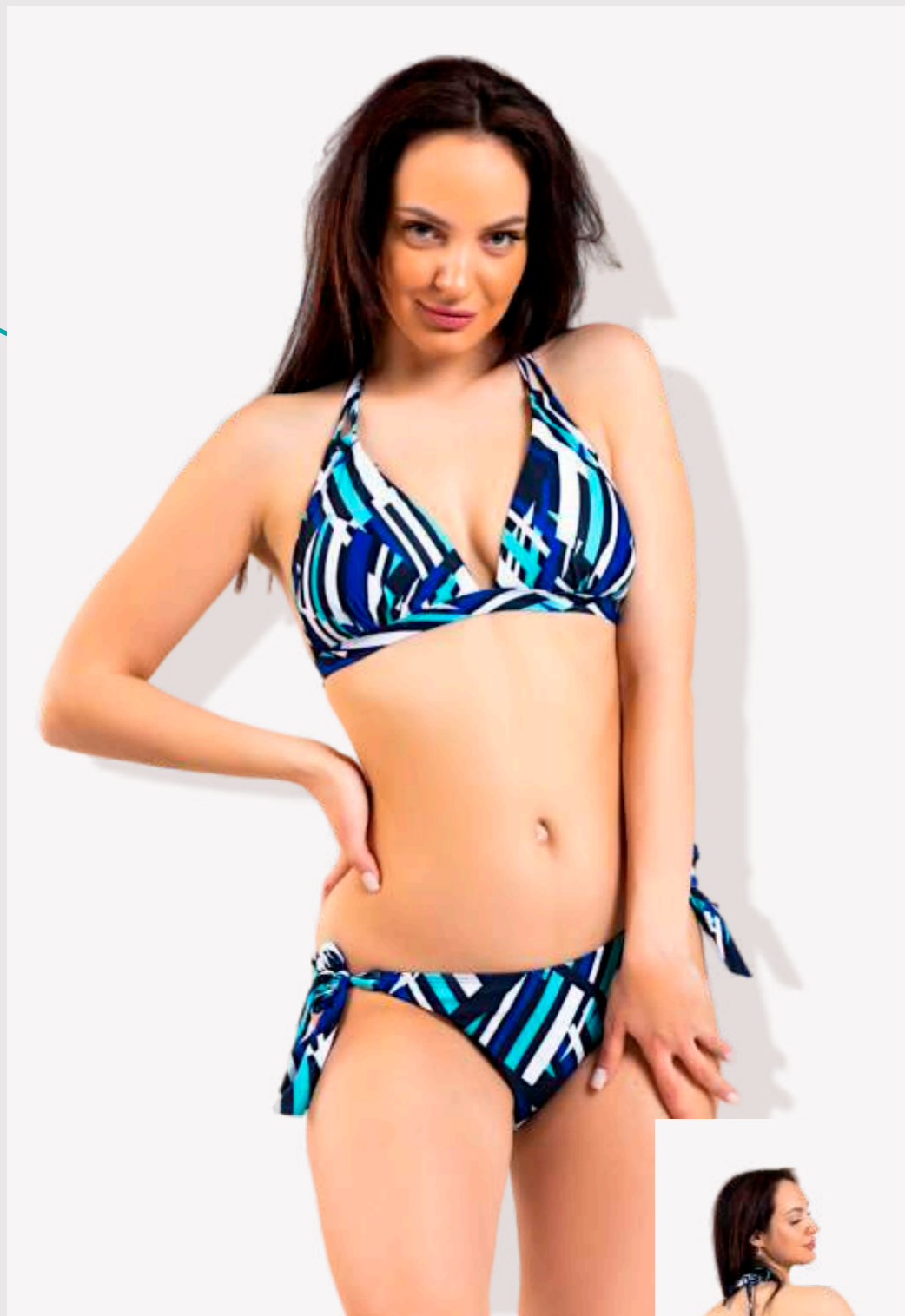
Swimsuit made of smooth printed fabric. One-piece swimsuit without wires. The molded cups, slimming silhouette, convenient for beach holidays and for relaxing in the pool



Turquoise Geometry

S25-0214

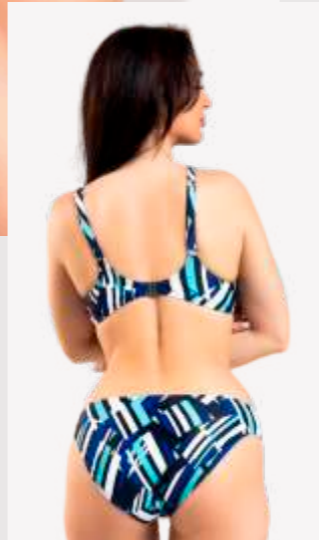
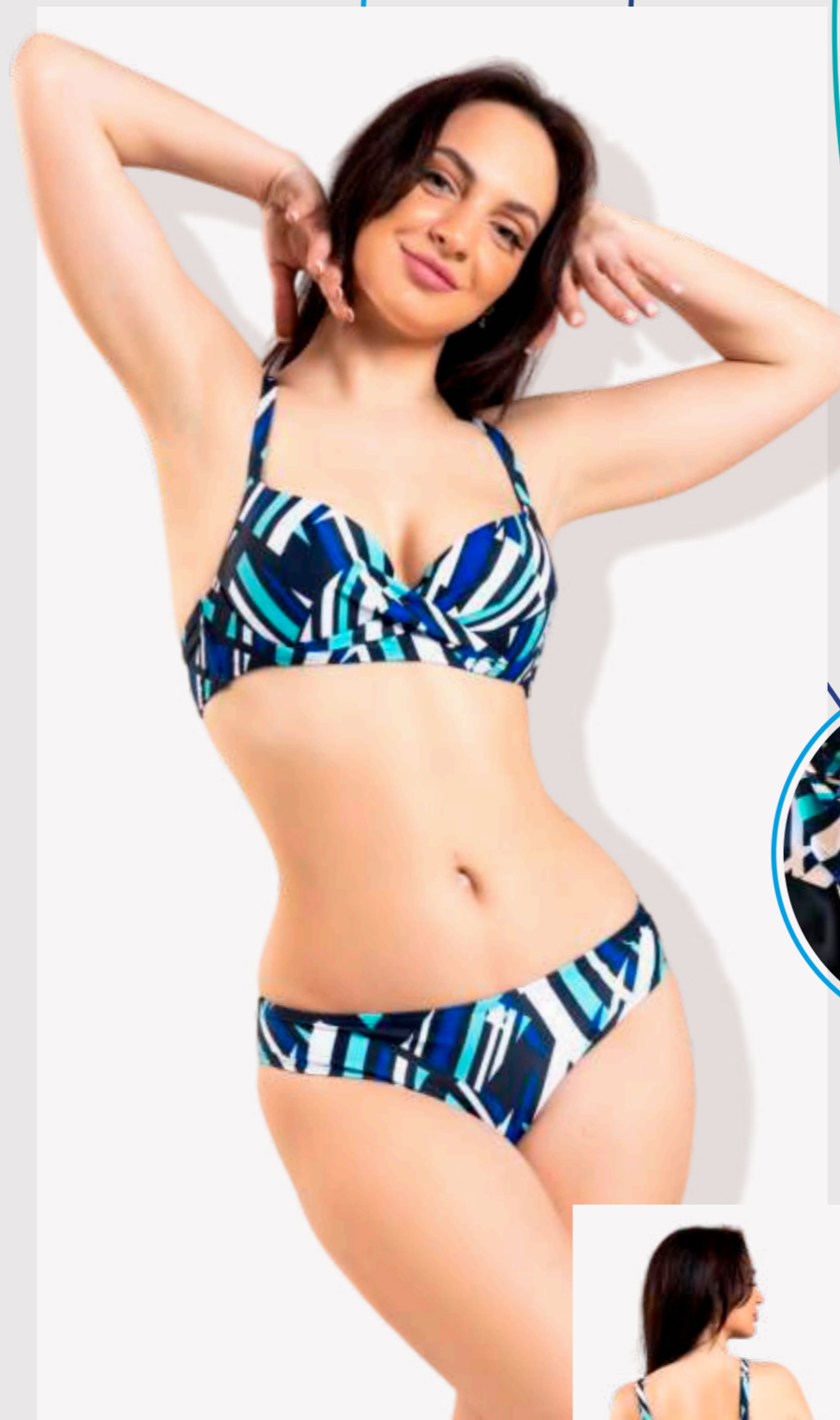
38-46



Swimsuit made of printed fabric . Top part of the swimsuit comfortable triangular cup shape. Moulded cups inserts. Without wires. The up part are double spaghetti. The panties with ties on the sides

S25-0262

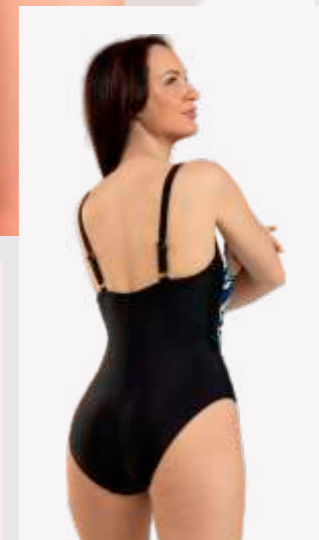
38-46



Swimsuit with smooth printed fabric. Moulded cups push up and drapery in the front. There are bones on the wings for a stable fit. Classic panties, This set pattern has been a bestseller for several seasons. Bottom classic middlewaist panties.

S25-0241

38-50C



Swimsuit made of printed fabric . The upper part in the bust area with built-in formula cups and a firming elastic band under the bust. Slimming silhouette and a straight neckline. This pattern has been a bestseller for several years.

Flame Of Passion

A25-1762

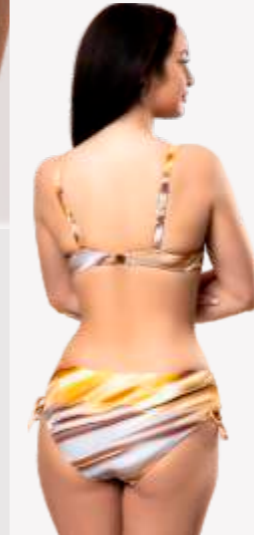
40-48C



Swimsuit of smooth Golden waves printed fabric. Top balconette with deep molded cup, wires. Can adjust the height of the panties using the spaghetti on the sides

A25-1715

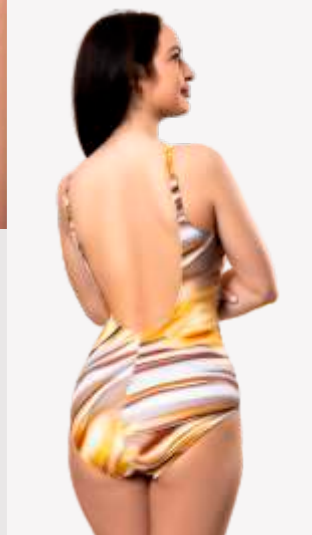
38-44



Swimsuit with smooth Golden waves print fabric. The upper part is a bandeau that can be worn without straps. Drapery on the front. Can adjust the height of the panties using the spaghetti on the sides

A25-1740

38-46



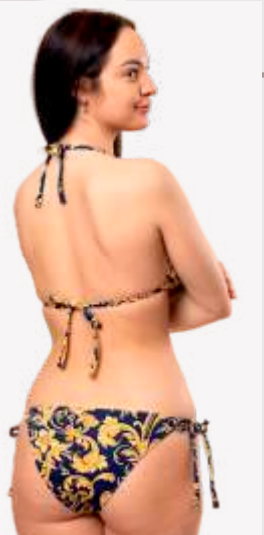
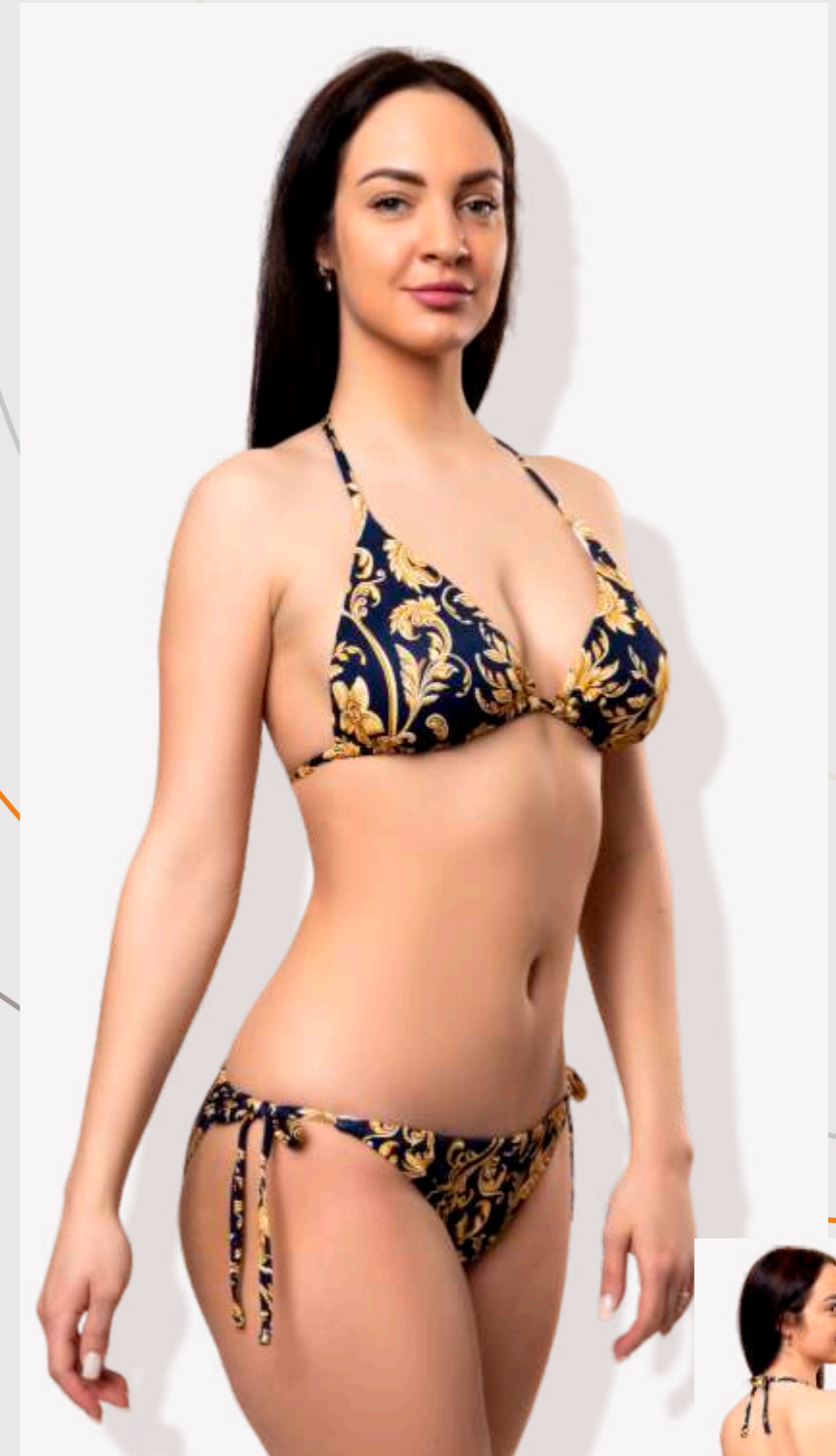
Swimsuit with smooth Golden waves print fabric. In the bust area support with sewn-in molded cups. Decorative belt with a buckle under the bust on the front




TROPICANA
SINCE 2000

A25-1114

38-44

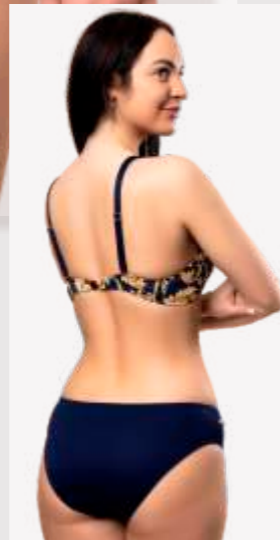


Swimsuit made from bouclé fabric, quick-drying,
Triangle top with molded cup lining that you can pull out.
panties with spaghetti-string.

Golden Baroque On Blue

A25-1162

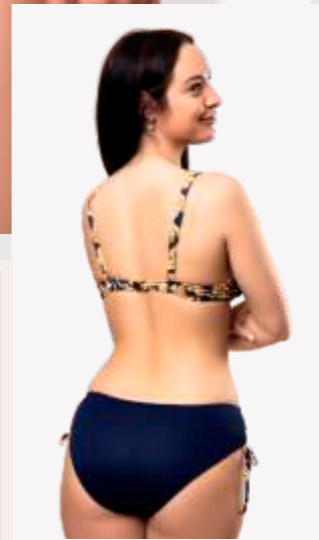
40-48C



Swimsuit made of boucle fabric, quick-drying.
Top balconette with deep molded cup, wires.
Decorative spaghetti on the front of panties

A25-1122

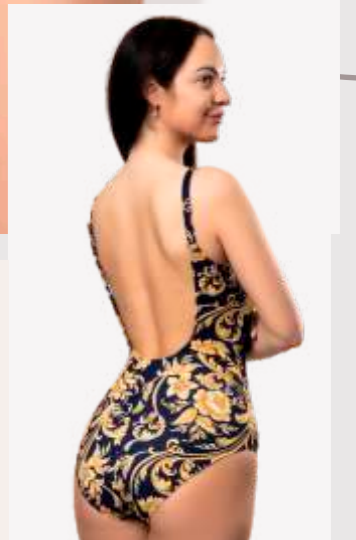
40-48C



Swimsuit made of boucle fabric, quick-drying.
Top with deep cup and molded cup inserts, open wires.
Panties can be adjusted in height on the sides using spaghetti

A25-1143

38-48

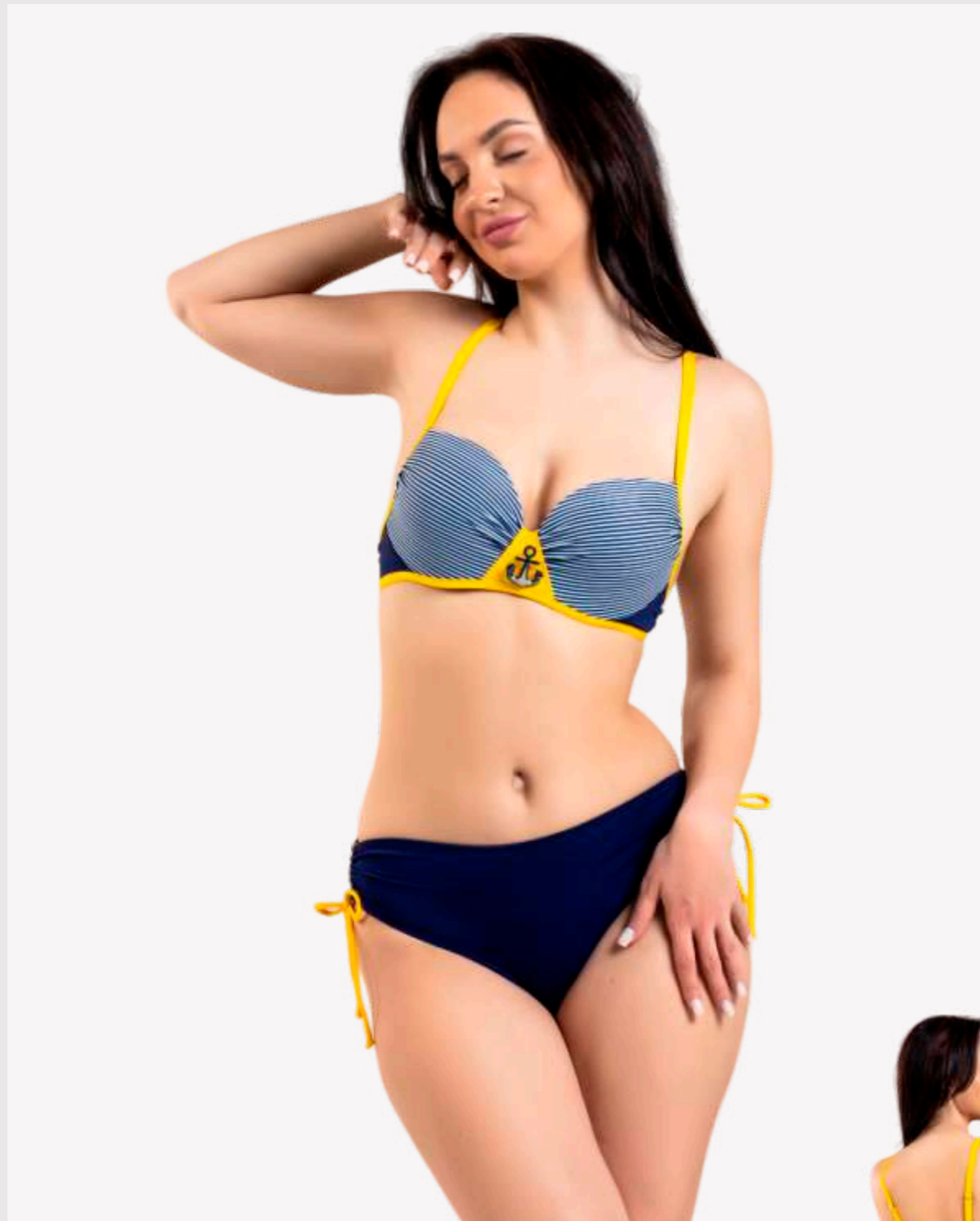


One-piece swimsuit made of bouclé fabric dries quickly
In the bust area support with sewn-in molded cups
Decorative belt with a rich buckle under the bust on the front

Yellow Marine

N25-6560

38-44

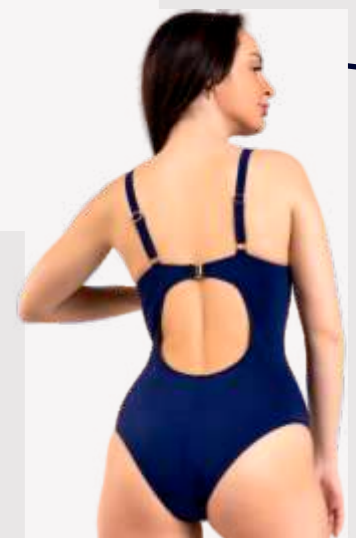


Swimsuit in a marine style striped print contrasting yellow trim of plain soft material in the center buckle acesorie gold Anchor that can be detachable

the upper part in the chest area a molded cup that perfectly supports the breast. Panties can be adjusted in height on the sides using spaghetti

N25-6541

38-44



Swimsuit in a marine style striped print contrasting yellow trim of plain soft material

in the center buckle acesorie gold Anchor that can be removed the upper part in the chest area a molded cup that perfectly supports the breast.

Golden Malachite

A25-1615

38-44

A25-1625

40-48C

A25-1643

38-46



Swimsuit of smooth Malachite printed fabric. The upper part is a bandeau that can be worn without straps. The shoulder straps are included. Drapery on the front. The panties with a small yoke on top



Swimsuit of smooth fabric with turquoise Malachite print
Top part thin deep cup that can be adjusted in height with an internal drawstring inside. The liner molded cup. Panties can be adjusted in height on the sides using spaghetti

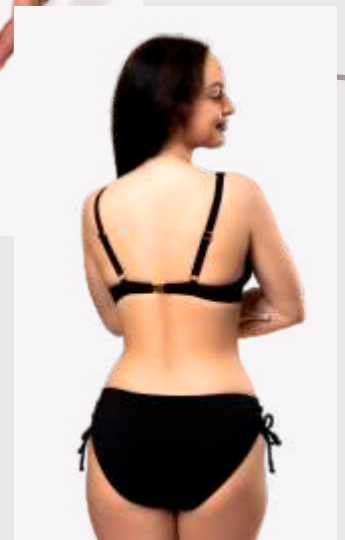


Swimsuit of smooth Malachite printed fabric. In the bust area support with sewn-in molded cups
Decorative belt with a buckle under the bust on the front



A25-1260

38-44



Swimsuit made from an elegant thin striped fabric with a pleasant touch quick-drying soft jacquard Swimsuit top half-cup open on a molded cup with gold trim in the mid-high bikini briefs

Striped Jacquard, Gold Accessories

A25-1215

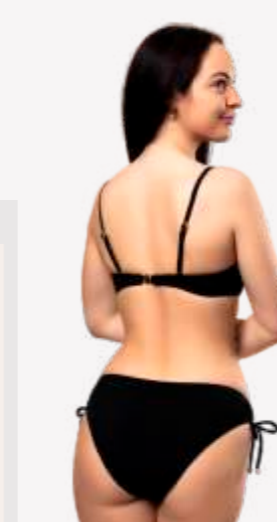
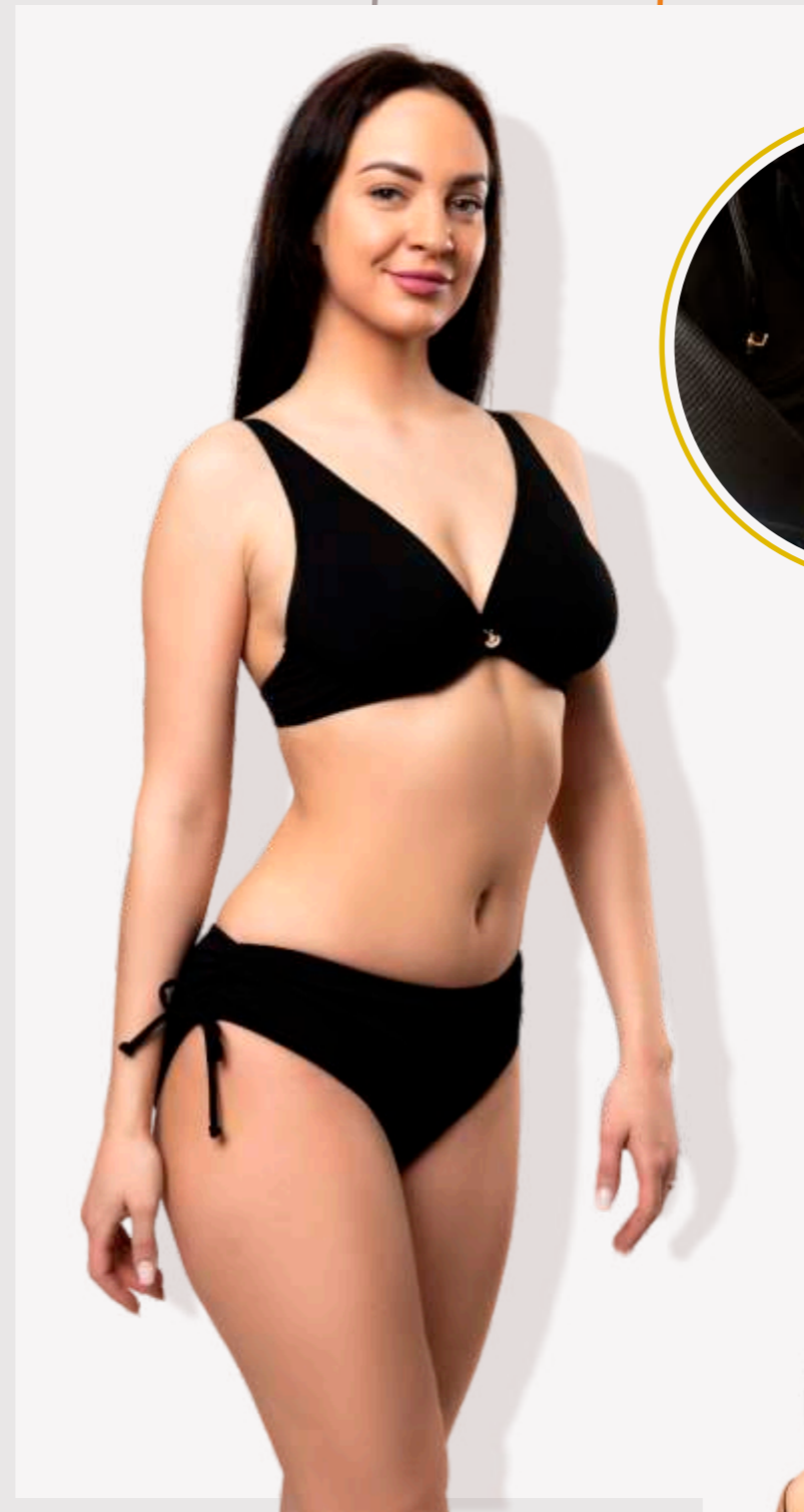
38-44



Swimsuit made of an elegant thin striped fabric with a pleasant touch quick-drying soft jacquard. The top is a semi-bandeau push-up with an asymmetrical one-shoulder strap. On the back the shoulder strap connects with two separate straps. Midwaist panties

A25-1222

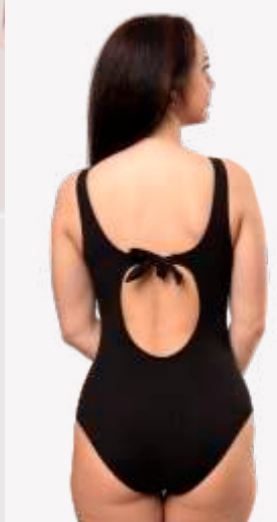
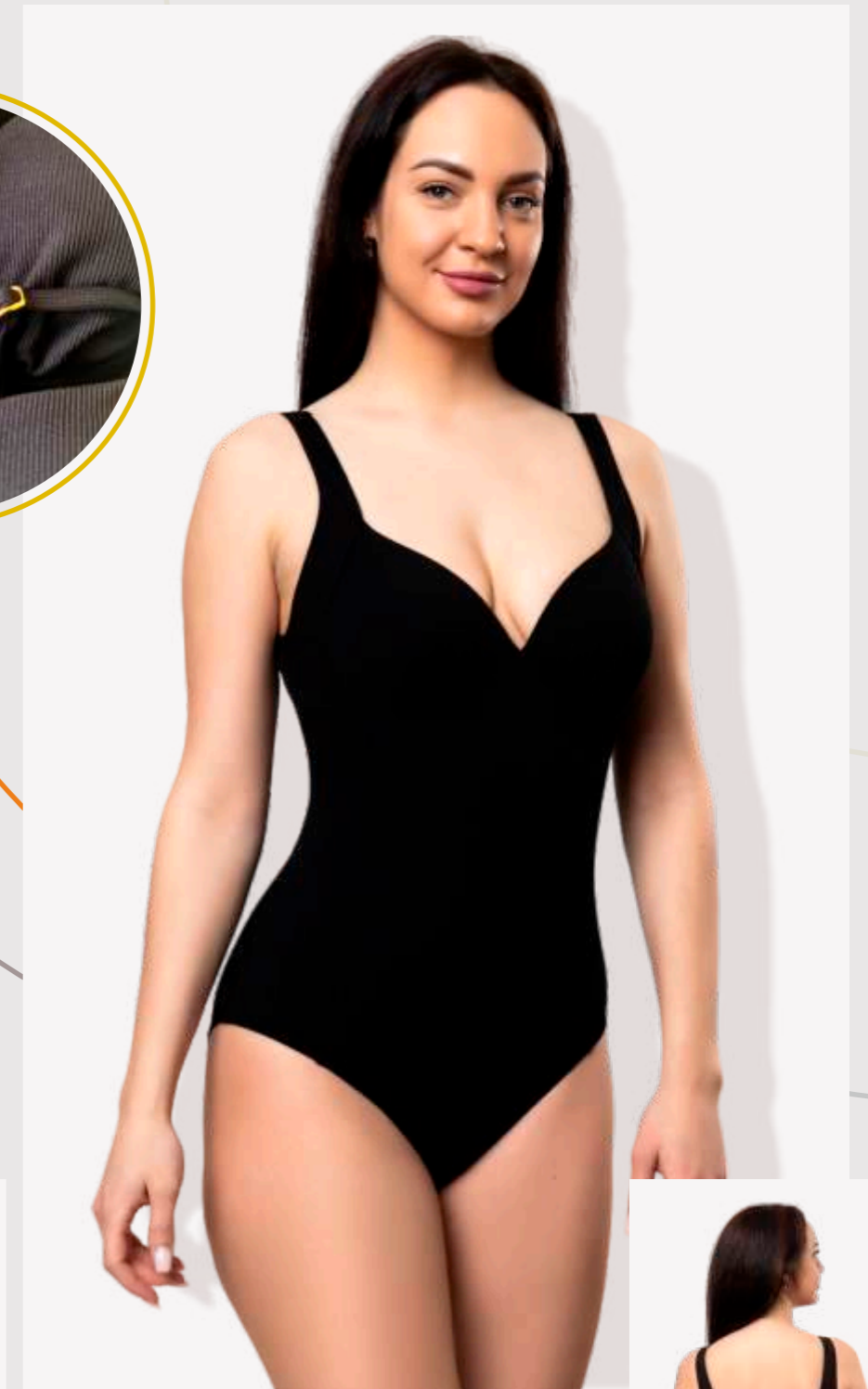
40-48C



Swimsuit made of an elegant thin striped fabric with a pleasant touch quick-drying soft jacquard. Top with deep cup and molded cup inserts, open wires. Can adjust the height of the panties using the spaghetti on the sides

A25-1241

40-48C



Swimsuit made of an elegant thin striped fabric with a pleasant touch quick-drying soft jacquard. Comfortable one-piece swimsuit design with molded cups without wires, slimming lines on the sides



TROPICANA

SINCE 2000

Sales Manager
Julia Dren,
sales1@monaok.com

EE Mob +372 58514082,
LV Mob +371 28068666

Designer, Project Manager

Tiana /Tatjana Kurpusheva
sales2@monaok.com
Mob. +371 28338882

Contact Manager

sales4@monaok.com
Mob. +371 28668849

SIA Mona Ok,
Laidzes iela 10, Rīga, Latvija, LV-1002,
www.monaokgroup.com

