

NAVI



XTEND

Listed on the Xtend Market of  
the Budapest Stock Exchange

BÉT

LEGEK  
2022

Az év kijelölt tanácsadója  
a BÉT Xtend piacon  
Navigator Investments Nyrt.



NAVIGATOR  
INVESTMENTS



JULIUS GLOBE

instrum

trifolium



**BUILDING A GROUP AT THE  
FOREFRONT OF INDUSTRIAL  
INNOVATION TECHNOLOGIES**

# LISTED ON THE BUDAPEST STOCK EXCHANGE

- Since 2022, we have been building an industrial group on the BSE Xtend market
- Total private capital raising of more than HUF 2,2 billion
- Our investors are investment funds and individuals



# THE NAVIGATOR GROUP'S OPERATIONS



NAVIGATOR  
INVESTMENTS

NAVIGATOR Investments Nyrt.



NAVIGATOR  
Technologies

NAVIGATOR Technologies Kft.

Other investments

Strategy and  
Acquisition Centre

Planning and production of equipment,  
precision CNC machining

Valve manufacturing,  
distribution, servicing

Manufacture and assembly  
of exhibition structures

Group  
services



GYŐRÚJBARÁT  
MARTONVÁSÁR



NAVIGATOR  
Instrum site

TÖKÖL



NAVIGATOR  
Brunnbauer

BUDAPEST



KISKUNFÉLEGYHÁZA



NAVIGATOR  
CAPITAL SERVICES

BUDAÖRS

[www.navitech.eu](http://www.navitech.eu)

Potential areas for further value-creating acquisitions:  
industrial automation, robotics, artificial intelligence

BÉT

LEGEK  
2022

As év kijelölt tanácsadója  
a BÉT Xrend piacán  
Navigator Investments Nyrt.

# LOCATIONS OF THE NAVIGATOR GROUP



**Brunnbauer-Budapest Ltd.**  
- Budapest  
Manufacturing, distribution, and maintenance of industrial valves and fittings



**Julius-Globe Ltd.**  
- Győrújbarát  
CNC machining, planning and production of equipments, research and development



**Julius-Globe Ltd.**  
- Martonvásár  
Custom and small-batch CNC machining of components, tool manufacturing



**NAVIGATOR Investments Plc.**  
- Budaörs  
Industrial-tech holding listed on the Budapest Stock Exchange – strategic and back office / support functions of the Group



**NAVIGATOR Capital Services Ltd.**  
- Budaörs  
Consulting and capital market advisory services (BSE NomAd)



**Instrum Ltd.**  
- Tököl  
Turned parts manufacturing – CNC longitudinal turning



**Trifolium International Ltd.**  
- Budaörs – office and factory  
- Kiskunfélegyháza - warehouse  
Fit-out and exhibition construction

# NAVIGATOR'S MISSION AND STRATEGY

THE NAVIGATOR GROUP AIMS TO BUILD AND OPERATE A GROUP OF COMPANIES AT THE LEADING EDGE OF INDUSTRIAL INNOVATION TECHNOLOGIES THROUGH AN ACTIVE ACQUISITION STRATEGY.



## Business target: more acquisitions

**Innovative companies** combining industry and modern technologies, linked to the portfolio, partly with a regional focus.



## Capital market target

Increase the number of investors and the liquidity of the share.



## Financial target

Between 2022 and the 2026E (expected), pro forma **revenue** is expected to **quadruple** to HUF 7-8 billion (**18 million EUR**)

Technology sector  
Industrial innovation



NAVIGATOR  
INVESTMENTS

Acquisition of  
companies

Generational  
change

# ACQUISITION TARGETS



Entering  
the international market

**Technology sector**  
**Machinery tool and  
component manufacturing**  
**Unique and small series**



Acquisition  
monitoring



Pre-screening 200+ domestic and  
foreign companies over the last  
10 years



Over 20 companies met the  
criteria



# WE HAVE ENTERED AN ERA OF TECH INNOVATION

## NAVIGATOR R&D IS A HUGE COMPETITIVE ADVANTAGE



PROVEN ENGINEERING EXPERTISE, CONTINUOUS PRODUCT INNOVATION



**ENERGY AND  
DEFENCE INDUSTRY  
SUPPLY**



**AUTOMATION AND  
ROBOTICS**



**ARTIFICIAL  
INTELLIGENCE IN  
THE INDUSTRY**





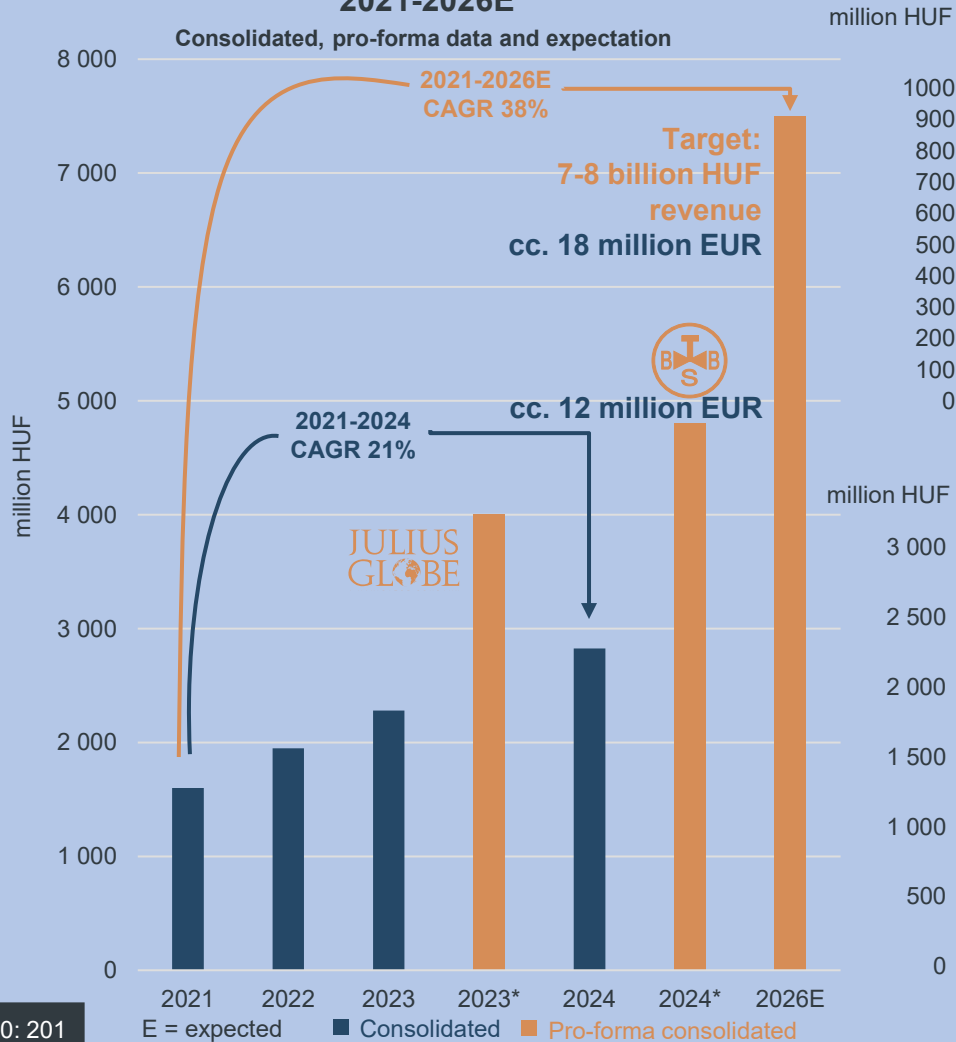
**NAVIGATOR  
INVESTMENTS**

**The NAVIGATOR  
Group in numbers**

# GROWTH OF THE NAVIGATOR GROUP

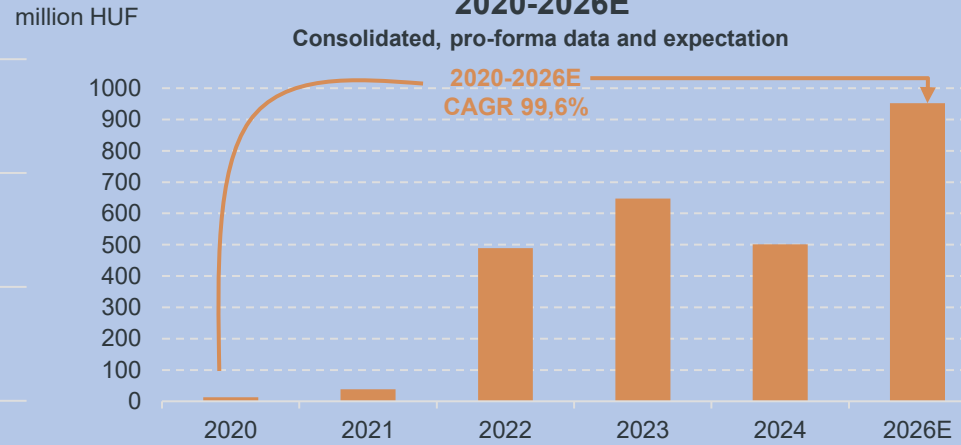
## NAVIGATOR GROUP REVENUE 2021-2026E

Consolidated, pro-forma data and expectation



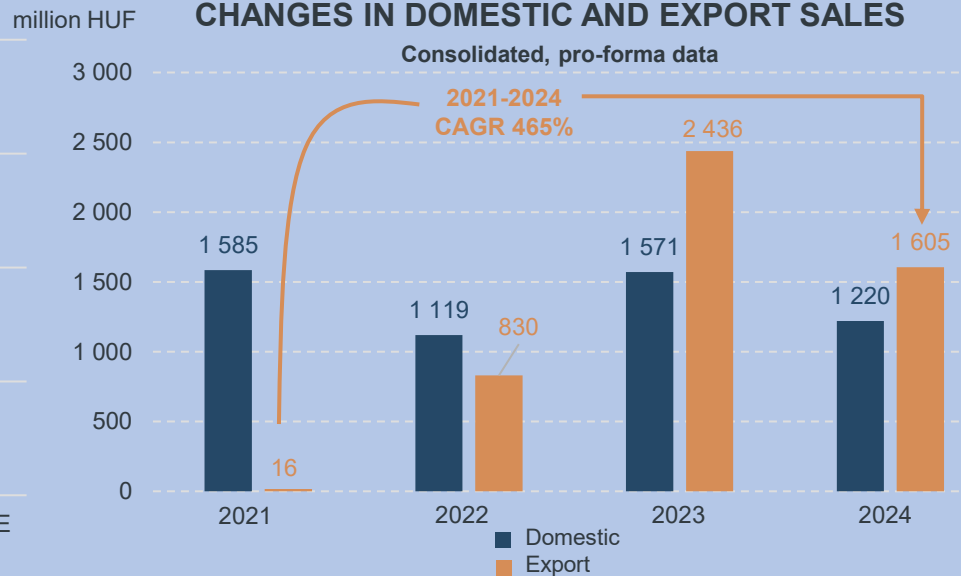
## NAVIGATOR GROUP EBITDA 2020-2026E

Consolidated, pro-forma data and expectation



## CHANGES IN DOMESTIC AND EXPORT SALES

Consolidated, pro-forma data



**3** NAVIGATOR Group has completed three significant acquisitions between 2020-2023.

We plan to acquire 2-3 additional companies in 2025-2026

We have raised HUF 2+ billion in capital and we plan to raise an additional HUF 1 billion.

We also expect significant organic growth in the coming years.

\*CAGR: Compounded Annual Growth Rate

# NAVIGATOR'S STOCK EXCHANGE PERFORMANCE



**June 19<sup>th</sup>, 2024**  
Europe | Industrial Services

**DR. KALLIWODA**  
RESEARCH GmbH

**Comprehensive Update BUY**  
Target price: 0.44 EUR

**NAVIGATOR Investments NYRT:**  
This acquisition kicked in the door, more room for innovative growth

**Company Analysis**  
DR. KALLIWODA | RESEARCH GmbH

Industry: Industrial Services  
Country: Hungary  
ISIN: HU0000198221  
Website: <https://www.navigatorinvest.com>

	in HUF	in Euro
Last price:	77	0.195
High	90.00	41.00
Low	7.545	
Price 52 W.:	40.899	
Market cap. (EUR '000)	126%	
Number of shares (tsd)		
Upside potential:		

**Shareholders**

Mr Zoltan Jutasi	62.3%
Mr Oliver Söväri	12.2%
Own Shares	12.7%
Free Float	12.7%

**Performance**

YTD	9.90%
3 months	52.00%
1 year	9.00%
From Start	6.10%

**Dividend**

	in HUF	in %
2022	0.60	0.90%
2023	1.20	1.60%

in '000 EURO	2021	2022	2023	2024e	2025e	2026e
Net sales	4,337	4,871	10,457	12,162	13,482	15,236
EBITDA	104	1,222	1,491	2,595	2,391	3,531
EBIT	64	570	975	1,787	1,980	2,583
Net income adjusted	313	450	938	1,806	2,005	2,507
	0.87	1.26	2.62	4.10	4.55	5.68
	0.05	0.10	0.15	0.16	0.21	0.26
	7.78%	12.72%	17.46%	25.27%	22.10%	21.82%
	4.47%	11.71%	9.33%	14.69%	14.69%	16.43%
	20.60	14.29	7.20	4.39	3.96	3.17
	3.66x	1.82x	1.26x	1.11x	0.88x	0.69x
			6.93x	3.63x	2.67x	1.52x

© 2024 & NAVIGATOR Investments NYRT

llwoda Research GmbH | Primary Research

Analyst rating

„BUY”

Target price (12 month)

0,44 €

Growth potential

126 %

## Product features

Ticker: NAVIGATOR  
ISIN: HU0000207733  
Listing date: July 28., 2022  
Currency: HUF  
Face value: 10 HUF  
Securities listed: 49 284 068 pcs.  
Market capitalisation: 4 436 mHUF

## Performance

YTD: 17,5 %  
1 year: 14,6 %  
From start: 11,0 %  
180 days average price: 84 HUF

Data source: bse.hu  
(access data: July 28., 2025 – before opening)

# INDUSTRIAL MANUFACTURING



**NAVIGATOR**  
INVESTMENTS

JULIUS GLOBE   instrum



**~12.3 million EUR**

REVENUE



**110+ emp.**

EMPLOYEES



**3 900 sqm.**

FACTORY SPACE



**HUNGARY**

CENTRAL EUROPE, EU



# MANUFACTURING ACTIVITIES OF THE GROUP



Budaörs  
Tököl  
Győrújbarát  
Martonvásár



**Precision CNC  
machining**



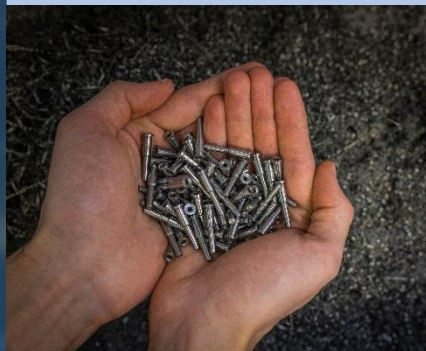
JULIUS  
GLOBE

Unique and  
small series



Synergy – medium  
and large series

**CNC long turning and  
CNC turning**



Manufacture of metal and  
plastic parts from fibrous  
materials



**Finishing (lining,  
washing) and assembly**



Complementary activities,  
100% quality control



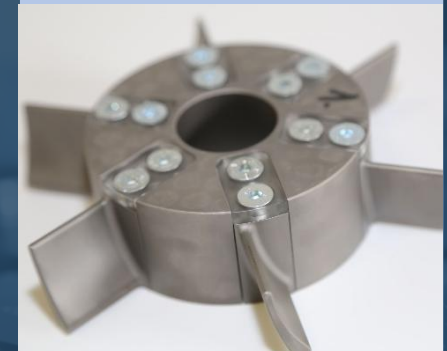
**Design, manufacture,  
assembly of equipment**



Design and manufacture of  
complex assembly units,  
measuring and control  
instruments



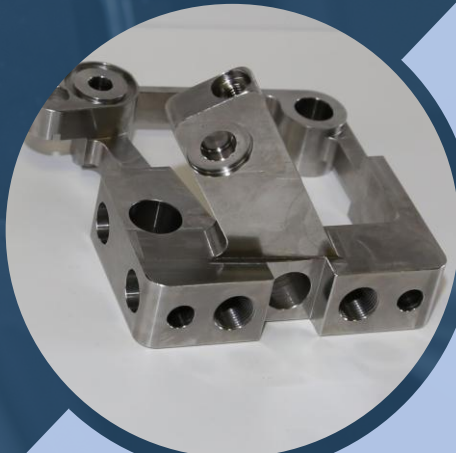
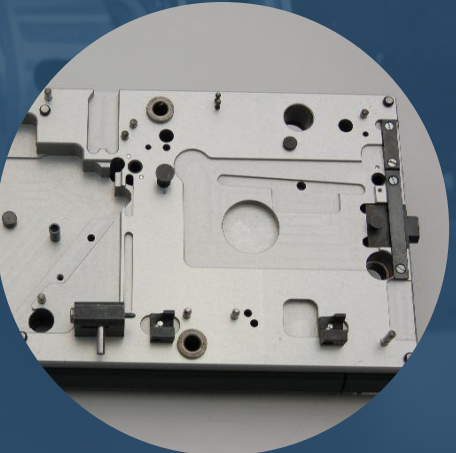
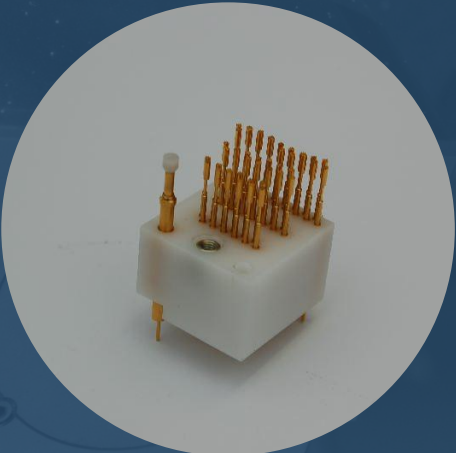
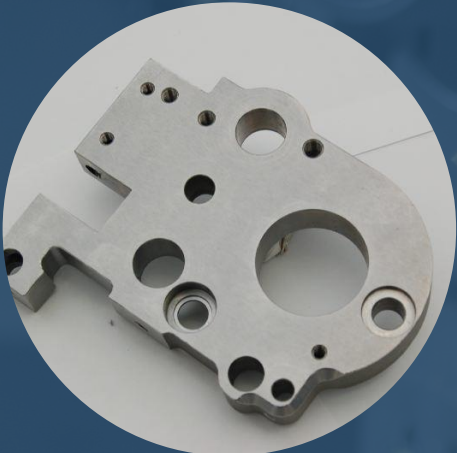
**Research and  
development**



Engineering team with  
recognised references



# CNC MACHINING – EXPANDING CAPACITY



# R&D ACTIVITY IN THE NAVIGATOR GROUP



With Julius-Globe joining the NAVIGATOR, R&D activities have also been added into the Group: we carry out full range of outsourced R&D projects based on customers' needs





Projects in constantly evolving industries requiring high precision, including healthcare, automotive and space industries





Our team currently consists of 6 development engineers working on R&D projects using CAD/CAM software such as CATIA, Creo, AutoCAD, and EdgeCAM.




Supporting the development of manufacturing technology for glass roof roller blinds 

Development of a contamination inspection device for engine blocks 

New heat treatment process for safety units of oil drilling rigs 

Design and production of an assembled, single-material propeller 

Research and prototyping of a medical device (knee implant) 



Among other projects, Julius-Globe has participated in the development of RadMag space radiation field and magnetic field measurement instrument

# GROWING ORDERS, BOOMING DEFENSE INDUSTRY



## Railway vehicle industry

There are several high-speed railways in different Asian countries (China, Japan). Trains running at speeds of up to 300 km/h are equipped with Instrum Ltd. components in the braking systems of several trains.



## Food industry



Key components of the high-tech, innovative domestic grain testing equipment are also made in Győrújbarát.



## Defense industry

We have the necessary licences to supply the defense industry - our order book has been growing steadily since we obtained certification.



Photo source: Dél-Zala Press

# NAVIGATOR AS A SPACE INDUSTRY SUPPLIER



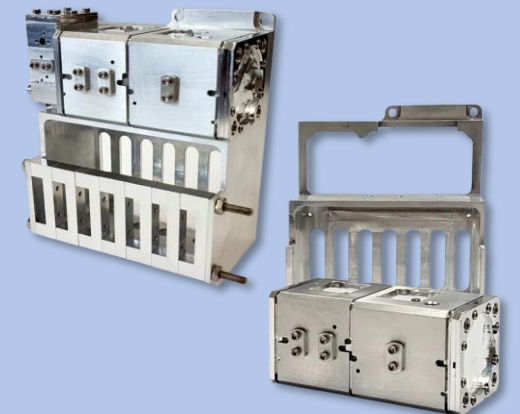
The manufacturing of space industry components, due to their extremely small size and complex design, as well as the need for precision manufacturing, presents a significant challenge but also an opportunity for professional advancement.



**RadMag:** engineers at Julius-Globe participated in the development of an instrument capable of measuring both the space radiation field and the magnetic field. The professional experience gained in aerospace design and manufacturing can also be applied in other industrial sectors.



Certain parts of the structural elements of the **RADCUBE 3U** satellite were manufactured at the Julius-Globe plant: PCB holders, frame structure, antenna deployment mechanism, and the mechanical components of the RadMag radiation measurement instrument's telescope unit.



# INDUSTRIAL VALVE MANUFACTURING, DISTRIBUTION AND MAINTENANCE



In May 2025, NAVIGATOR signed a share purchase agreement to acquire 100% ownership of Brunnbauer-Budapest Ltd.

The Group's industrial manufacturing capacity has expanded to include the production of high-pressure shut-off and control valves with forged steel housings. As part of the integration, 24 colleagues from the Budapest facility have joined the Group.

Brunnbauer is the official Hungarian representative of Leser safety valves, providing both sales and servicing. The company also represents Protego flame arresters and other industrial fittings, offering local technical support and consultancy.



# VALVES: DESIGN, MANUFACTURING, AND MAINTENANCE



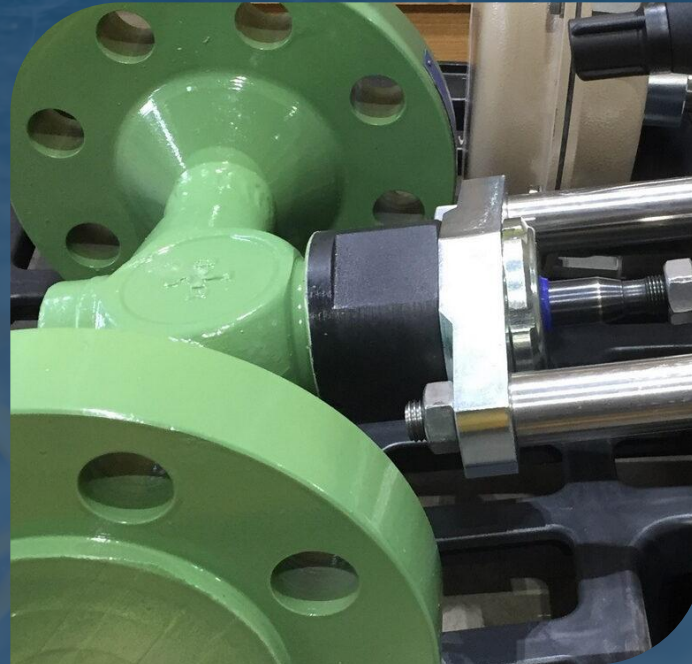
Certified by MVM Paks Nuclear Power Plant  
ISO 9001:2000  
ISO 3834-2:2006  
ISO 9001:2015

High heat  
resistance

Forged steel  
materials

In-house  
production,  
servicing

Valve control  
systems



# NAVIGATOR GROUP X COMPONENT GROUP



## New CNC plant in Martonvásár

NAVIGATOR group member Julius-Globe has acquired the CNC facility of Component Group in Martonvásár. In addition to expanding the machine fleet and welcoming highly skilled professionals, the acquisition has resulted in a significant increase in both client base and order volume.



## Capital increase in NAVIGATOR

Component Holding Ltd. has acquired an ownership stake of over 10% in NAVIGATOR Investments Plc., listed on the Budapest Stock Exchange, through a private capital increase. Dániel Nagy, CEO of Component Group, has joined the NAVIGATOR board of directors.



## Strategic partnership

As part of the agreement, Component Group will distribute valves manufactured by Brunnbauer-Budapest Ltd., a NAVIGATOR subsidiary, across its markets. In turn, Brunnbauer will offer Component control systems alongside its valve products.



# 15+ INDUSTRIES, 200+ CLIENTS, DIVERSIFIED OPERATIONS



The above statement is based on the NAVIGATOR Group's pro forma consolidated data for 2024.

# GROUP OF RECOGNIZED MEMBER COMPANIES



National Public Champion, National Champion (European Business Award)



Julius-Globe / Budapest Stock Exchange: BSE50 selection in 2017



Yvette Jutasi: CFO Master 2024



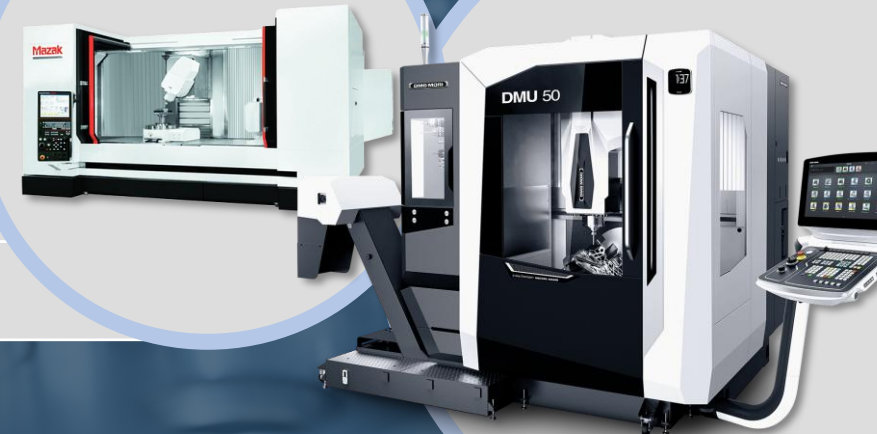
Receiving the award at the Future of Finance 2024 conference

# NAVIGATOR Group machine park

JULIUS GLOBE  INSTRUM 

# MACHINING CENTRES

CNC Milling machines - machining centres	Maximum production dimensions (mm)
HURCO VMX 60SRTi 5-Axis	1524 x 60 x 610, Ø600
MAZAK VTC 800/20 SR 4-Axis	2000 x 800 x 660
DMU 50T Deckel Maho 5-Axis	500 x 400 x 400
HURCO VMX 42SRTi simultaneous 5-Axis	1067 x 610 x 610, Ø600
HURCO VMX 42SR simultaneous 5-Axis	1060 x 610, Ø600
HURCO VMX 30i 3-Axis	762 x 508 x 610
HURCO VMX 30T CNC 5-Axis	762 x 508 x 610, Ø250
HURCO VMX 30U CNC simultaneous 5-Axis	762 x 508 x 520, Ø250
HURCO VMX 30i CNC simultaneous 5-Axis	762 x 508 x 610, Ø250



# ADDITIONAL MACHINING AND TURNING CENTERS

CNC machining centers	Range (X/Y/Z, mm)
OKUMA Genos MV460-VE-e 3-Axis (2 pcs.)	762 x 460 x 460
OKUMA Genos M560-V-e 3-Axis (2 pcs.)	1050 x 560 x 460
OKUMA Genos MB-66VA 3-Axis (2 pcs.)	1500 x 660 x 660
OKUMA Genos M460V-5AX 5-Axis	762 x 460 x 460
OKUMA Genos L300E-MY with driven tool	max. 1050 mm length, 300 mm diameter



# CNC TURNING MACHINES

CNC Lathes	Maximum machining dimensions
DMG MORI NLX2500/700	Ø300 700 x 100
OKUMA Genos L300 MYW with counter spindle	Ø300 370 x 500 x 100
MAZAK Mega Turn 600M SMOOTH vertical	Ø600 x 500
ROMI M680	Ø680 x 1000
DMG MORI NLX 1500/500	Ø150 x 500
Daewoo Puma 240MB CNC	Ø300 x 390
Doosan LYNX220LM + AM90 HATEC with bar feeder	Ø240 x 300
GILDEMEISTER NEF 320	Ø250 x 1000
PROTOSTIM SE 520 Numeric 1500	Ø500 x 1500
YCM GT-200MA – with bar feeder, driven tools, C-axis (2 pcs.)	from bar Ø43 mm, from blank max. Ø120 mm



# CNC LONG TURNING MACHINES / CNC SWISS-TYPE LATHES

CNC long turning machines	Maximum machining dimensions
STAR SR-10J – with counter spindle, bar feeder, 5-axis	Ø10 mm
STAR SR-20J - with counter spindle, bar feeder, 7-axis (3 pcs.)	Ø20 mm
STAR SR-20R - with counter spindle, bar feeder, 7-axis	Ø20 mm
STAR SR-20R - with counter spindle, bar feeder, 5-axis	Ø20 mm
STAR SR-20N - with counter spindle, bar feeder, 5-axis	Ø20 mm



# GRINDING MACHINES

Grinding machines	Maximum machining dimensions
OPTIMUM enterless cylindrical grinder	Ø5-Ø30 x 60-70 mm
KOEBAU MULTIMAT centerless grinder	through-feed capacity 75 mm
MIKROSA SAS2 12T centerless grinder	through-feed capacity 80 mm
OKAMOTO ACC 64DX, 84DX surface grinder	750 x 400 mm / 950 x 440 mm
DEGEN surface grinder	300 x 600 mm
SUPERTEC STP-1834 ADS surface grinder	400 x 800 mm



# CONVENTIONAL MILLING MACHINES

Conventional milling machines	Maximum machining dimensions
TOS	400 x 400 x 200
KUNZMANN WF 600	600 x 425 x 400
MAHO 800	800 x 500 x 400



# WIRE, SINKER AND HOLE DRILLING EDM MACHINES

EDM machines	Maximum machining dimensions
MITSUBISHI MV2400R (3 pcs.)	600 x 400 x 310
FANUC Robocut C600IB Z400 Wire	600 x 400 x 400
AGIE Mondo Star 20 Spark	300 x 250 x 200
CHARMILLES Robofil 240 SLP Wire	350 x 220 x 220
CHARMILLES CNC Startbore	200 x 200



# QUALITY CONTROL LABORATORY EQUIPMENT

Measuring devices	Maximum machining dimensions
WENZEL 3D LH87	1500 x 800 x 600
WENZEL 3D	650 x 1000 x 500
NIKON MCAx25+	2500 mm measuring range, $\pm 0,034$ mm
NIKON ALTERA 15.10.8	1500x1000x800 mm travel range
SYLVAC Z_CAL 350 mm	-
SPECTROMAXX F Spectrometer	-
QNESS Universal hardness tester (Rockwell, Brinell, Wickers)	-



# OTHER TOOLS AND DEVICES

## Other tools and devices

MEP SHARK 330AXI-S CNC controlled cutting saw

Sandblasting machine

Heat treatment furnace

CO welding machine

Radial drilling machine

Abrasive machine

Plasma cutting machine

Threading machine

Bench drills (3 pcs.)



**THANK YOU  
FOR YOUR ATTENTION!**



**NAVIGATOR  
INVESTMENTS**

# DISCLAIMER

*This prospectus has been prepared by NAVIGATOR Investments Plc. (registered office: 2040 Budaörs, Gyár utca 2.).*

*This prospectus contains only factual information and conclusions based on reasonable calculations available at the time of its preparation.*

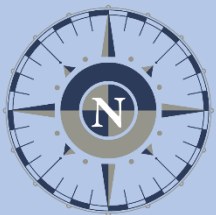
*This prospectus does not constitute and should not be construed as a prospectus relating to the issue of securities, information pursuant to Section 16 of the Capital Markets Act, an offer to sell securities, an investment recommendation or investment analysis, or a proposal to purchase securities of the Company.*

*These prospectus materials also contain forward-looking statements based on current beliefs and assumptions of NAVIGATOR Investments Plc's management, which the Company believes are made in good faith and are reasonable in the Company's opinion.*

*Forward-looking statements may be affected by known and unknown uncertainties and risks and other factors that could cause actual results, financial condition, performance or achievements of NAVIGATOR Investments and the relevant Companies or industry(ies) to differ materially from those expressed or implied in the forward-looking statements.*

*NAVIGATOR Investments Plc. and its representatives shall not be liable for any investment decisions based on the conclusions drawn from the information contained in this prospectus, for any adverse legal or financial consequences thereof, or for any losses suffered.*

*NAVIGATOR Investments Plc.*



**NAVIGATOR**  
INVESTMENTS