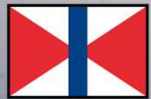




# Company Presentation

Aleksi Rytilahti, Commercial Manager Nordics



SWIRE RENEWABLE ENERGY



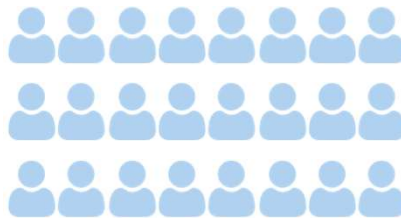
# Swire Group Overview

A Highly Diversified Business Group



**£14,677M**

turnover in 2023



**121,211**

employees



Swire Renewable Energy  
is a subsidiary of **John**  
**Swire & Sons** Limited

Headquartered in the UK, the Swire Group is a diversified global conglomerate with businesses spanning **Property, Aviation, Beverages & Food Chain, Trading & Industrial, Marine Services and Healthcare**





# Swire Group Key Business Divisions

A Highly Diversified Business Group



## Property

Substantial property interests in the Hong Kong SAR, the Chinese Mainland, the USA, Southeast Asia and Papua New Guinea



## Beverages & Food Chain

One of the largest Coca-Cola bottlers in the world, a leading international supplier of tea, coffee, and botanical extracts for the global beverage industry, and is one of the largest operators of cold storage facilities in the USA



## Aviation

A major player in the global aviation industry, with interests including airlines and aircraft engineering. The division comprises significant investments in the Cathay Group and Hong Kong Aircraft Engineering Company (HAECO) Group.



## Marine Services

Marine interests cover a range of activities, from multipurpose liner shipping to global bulk trading, logistics, and port and shipping agency services. The group's involvement in this industry dates back 150 years



## Trading & Industrial

Encompass a wide spectrum of business interests, ranging from apparel to automotive trading. The group has strategic investments in various sustainable businesses.



## Healthcare

Swire is continually looking to expand into new areas of operation that complement its existing portfolio and provide opportunities for future growth. It is actively working to grow its healthcare services platform.



# Working with SRE

## Value Proposition

High Flexibility for the client



Long-term Strategy & Financial Strength



Mobilise anywhere within UK & IE, Europe, Asia and APAC



Strong track record with Wind OEMs



Highly qualified team onshore and offshore



Management focus on HSEQ leading indicators



SWIRE RENEWABLE ENERGY

# Our Values

What they mean to us

Underpinning everything we do are our values, which are based on the Swire Group's core values

These values define our corporate culture and serve as guiding principles of Swire Renewable Energy and how we run our business and treat our people.



EXCELLENCE



ENDEAVOUR



INTEGRITY



CONTINUITY



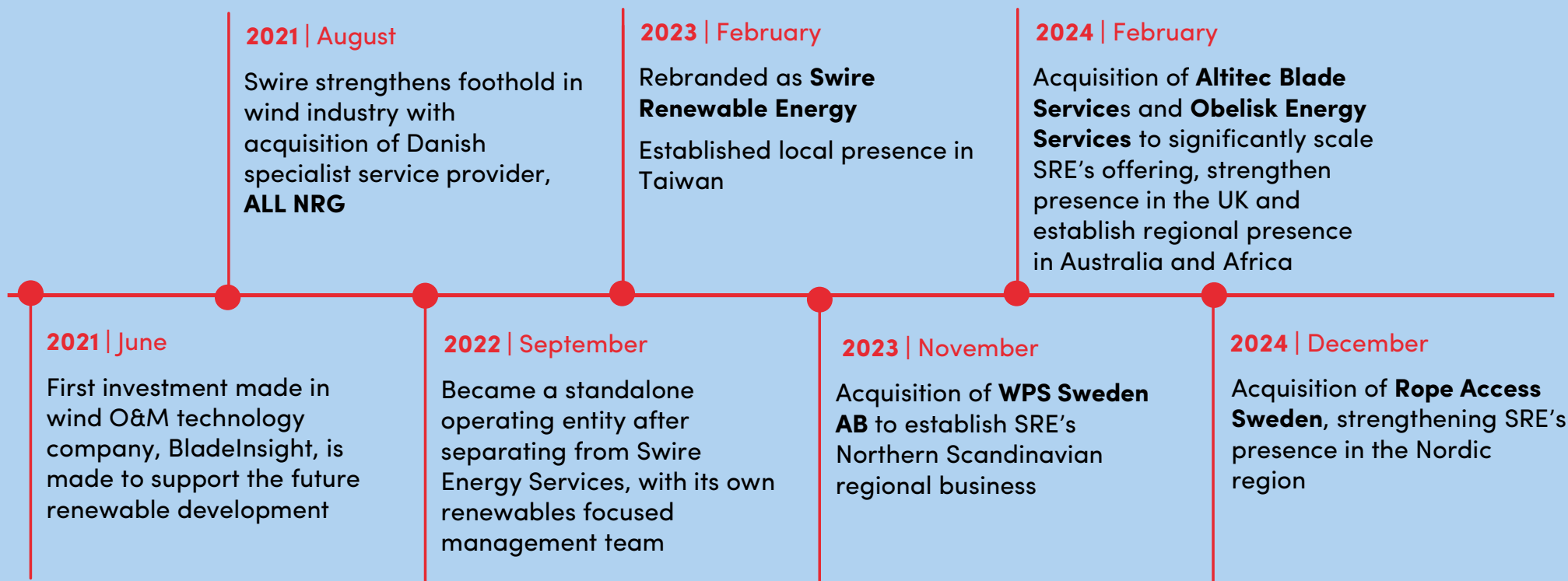
HUMILITY



SWIRE RENEWABLE ENERGY

# Our Journey

And where we are today



SWIRE RENEWABLE ENERGY

# WPS Sweden

## Business Overview

- Acquired by SRE in October 2023, WPS Sweden was an onshore wind turbine inspection, repair and maintenance company based in Sweden.
- Headquartered in Pitea with another service hub in Östersund.
- Operations in Sweden, Finland & Norway
- Technicians based across all of Sweden with operations in Sweden, Finland & Norway
- Service offering includes Blade Inspection & Repair, Service & Maintenance of Turbines, and inspections and repair of turbine lifts and winches.

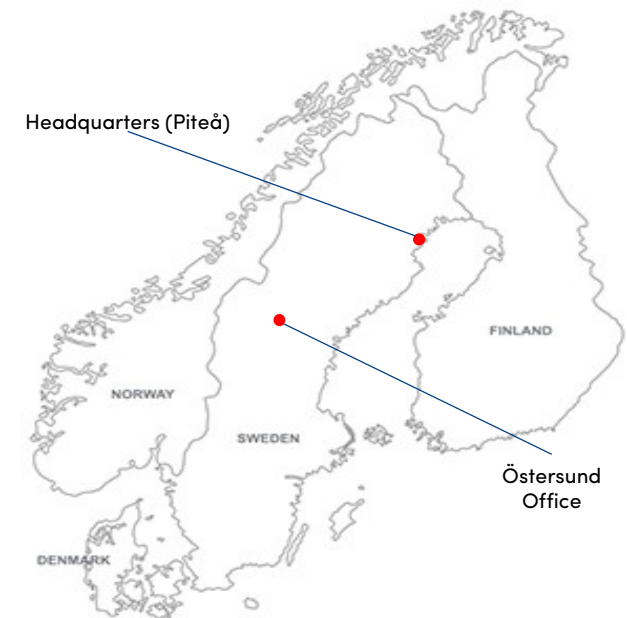
### Technicians



#### 29 Employed Technicians

- 20 Mechanical / Electrical
- 9 Blade

### Key Customers





# Altitec Blade Services

## Business Overview

- **Acquired in February 2024, Altitec is a global blade inspection, repair and maintenance focused business that also offers blade training.**
- Headquartered in London with offices in Berlin, Cape Town and Melbourne.
- Altitec work both onshore and offshore with the majority of revenue being created in the UK with material revenue being generated in Australia and South Africa.
- 20-year track record supporting major OEMs and assets owners in maintenance and construction
- Altitec developed into a one-stop shop, not only for high-quality, efficient maintenance services conducted at height, but also for the technology and training that makes this essential work possible



### Technicians



#### 81 Blade Technicians

- 22 IRATA Level 1
- 20 IRATA Level 2
- 39 IRATA Level 3

### Key Customers





# Obelisk Energy

## Business Overview



- **Acquired by SRE in February 2024, Obelisk was a leading supplier of high-quality maintenance, testing and support services**
- Headquartered in Cape Town with locations in Port Elizabeth
- Operational record in South Africa, Tanzania, Kenya, Mozambique, Ireland (blade work), and the Philippines
- 70-80 staff, including technicians

### Key Customers



### Service Portfolio

- Wind Measurement Services (OEMs)
  - Met Mast Installation & Decommissioning / Maintenance
  - SODAR/LIDAR installation / Maintenance
  - Data Monitoring
- HSE Services (OES)
- Statutory Inspections / O&M Services (OES)
  - Inspection: Lift / Ladders / Hoist / Anchors / etc
  - Maintenance :Lift/Ladders (Certified by Dual Lift / Zarges / Avanti / PowerClimber / Jaso)
  - Planned Turbine Maintenance
- Blade and Tower Services (ASA)
  - Inspection and Maintenance of Blades
  - Maintenance on Towers (painting, cleaning)
  - Accredited Partner for ActSafe Ascenders / Käufer Tower Platforms
  - Altitec Academy (Rotor Blade Technician Training)

# Combined Service Portfolio

What we offer as of February 2024

## SWIRE RENEWABLE ENERGY

- **Installation** – Manpower, Pre-Assembly, Commissioning, Maintenance & Repair, Decommissioning
- **Blade** – Inspection, Maintenance, Repair, Leading Edge Protection, Warranty, Drone Inspections
- **HV Electrical** – Troubleshooting, HV / MV Service, Upgrades, Installation, Commissioning, Substation Services, Inspections
- **Turbine** – Manpower, Maintenance, Retrofit, Troubleshooting
- **Marine Support** – Vessel Charter, Component Shipping, Logistics Management, Lifting Equipment



- **Service, Repairs and Installation** – Planned and Ongoing O&M Services, Retrofits, Troubleshooting
- **Blade** – External And Internal Repairs, Analysis and Reporting, Tower Damage Repairs, LEP and LPS, Drone Inspections



- **Blade Repairs** – Leading Edge, Trailing Edge, Vertical Cracks, Retrofit Measures And Repairs, Lighting Strike And Receptor, Delamination, Correctional Repairs at Commissioning Stage, Re-construction off Blade Tips, Among Others.

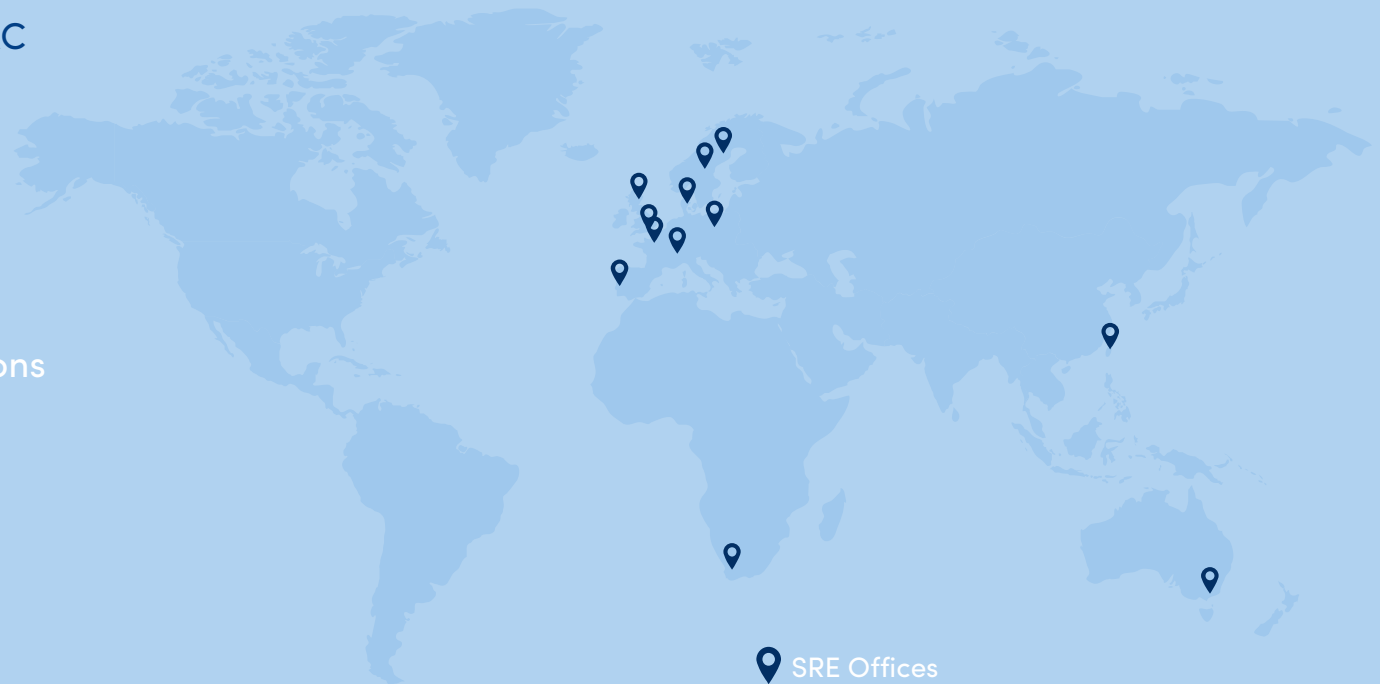
## Obelisk Energy

- **Wind Measurement Services (OEMs)** – Met Mast, SODAR/LIDAR, Data Monitoring
- **HSE Services** (OES)
- **Statuary Inspections / O&M Services (OES)** – Inspection, Maintenance
- **Blade and Tower Services (ASA)** – blade inspection and maintenance, tower maintenance, ActSafe Accredited Partner, Blade Training Academy

# Our offices

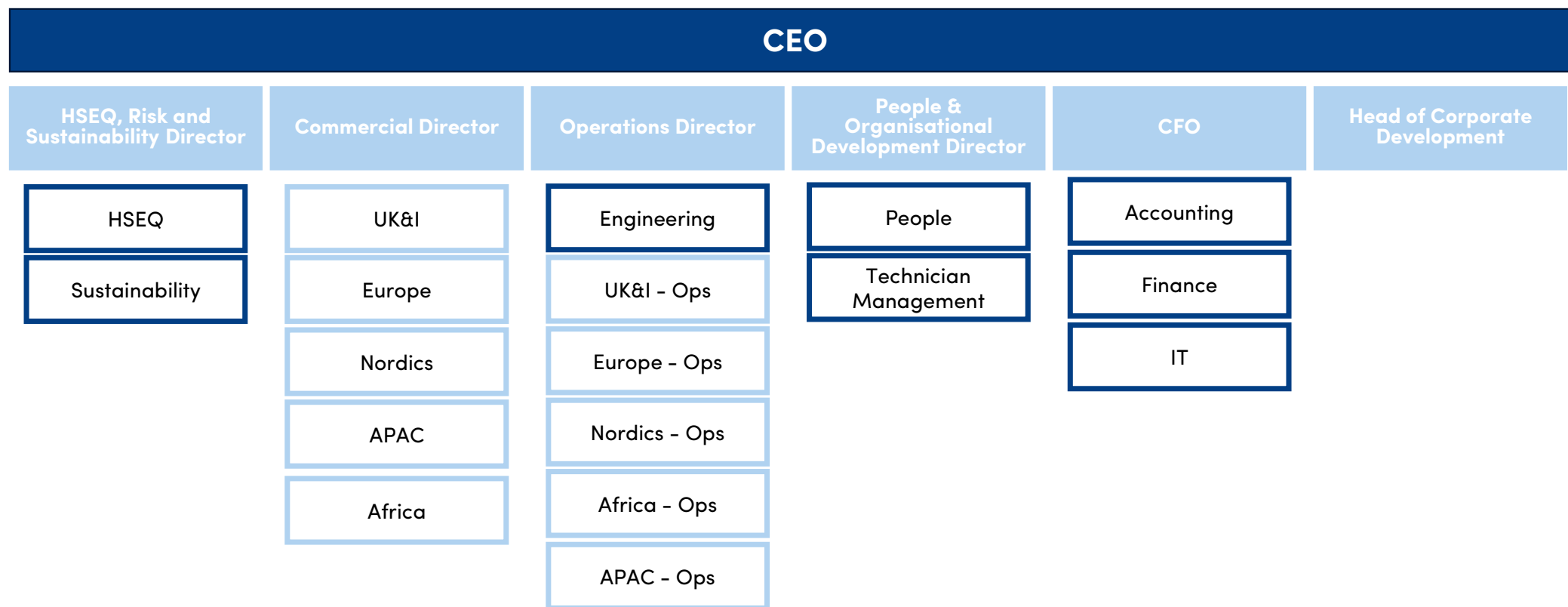
## Where we are

- Headquarters in Aarhus, Denmark
- 6 Regional Offices with a focus on UK & IE, Europe, Nordics, Africa & APAC
  - Aarhus, Denmark
  - London, UK
  - Cape Town, South Africa
  - Piteå, Sweden
  - Taipei, Taiwan
  - Melbourne, Australia
- 9 Site offices supporting local operations
  - Esbjerg, Denmark
  - Paris, France
  - Stockholm, Sweden
  - Gothenburg, Sweden
  - Bydgoszcz, Poland
  - Lisbon, Portugal
  - Berlin, Germany
  - Grimsby, UK
  - Aberdeen, UK
  - Taichung, Taiwan



# Company Structure

How our team works together



 Regional teams focused on local delivery  Group functions from Head Office



# Safety Non-Negotiables

Our People are our greatest asset



# Health & Safety Focus

Our People are our greatest asset

## Structure

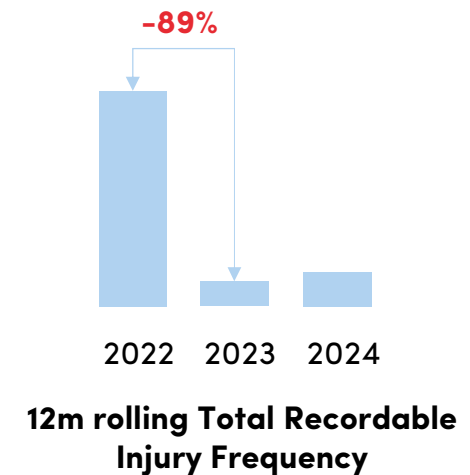
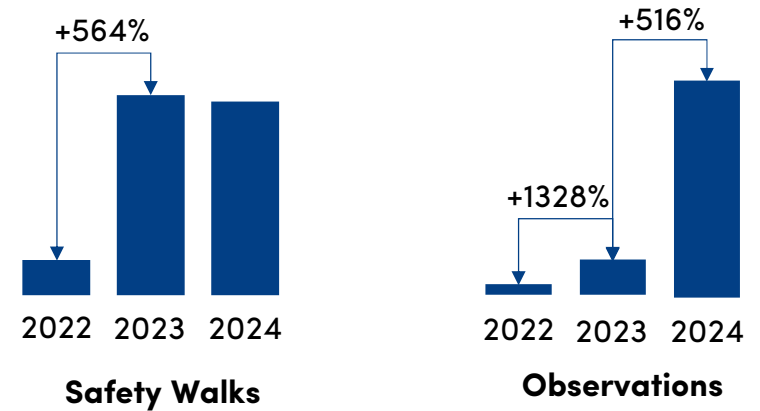
Regional HSEQ Managers reporting into Operations

## Visibility

Every member of management required to do a safety walk at least once per year

## Engagement

Monthly HSEQ meeting chaired by CEO with report issued to whole company. Annual Technician Engagement meetings.



# 2024 HSE Objectives

Our People are our greatest asset

## Increase awareness of hazards and improve safety behaviour

- Set safety non-negotiables and monthly safety campaigns, see safety wheel.
- Goal of **3,000 safety observations**
- Operations and HSE Managers to perform target of 90 safety walks / behavioural audits
- Project specific safety observation targets
- Provide all technicians with a remote induction which should include safety awareness

## Enable continual improvement through investigation, monitoring, and reporting

- Perform risk based internal audits
- Implement EcoOnline to provide stronger reporting and ensure cases are effectively responded to and closed out.
- Introduce 5x Whys and TopSet Investigations for all incidents
- Explore wearable technology to improve quality of safety walks and toolbox talks by allowing remote attendance



Planned Safety Campaigns for 2024

# HSE Commitment Recognised by Our Clients

## Our People are our greatest asset

**Our dedication to maintaining the highest standards in Health and Safety is frequently acknowledged by our clients. This recognition reflects the proactive efforts, leadership, and safety awareness demonstrated by our team across various projects. Key examples of this recognition include:**

- On the Baltic Eagle Project, Vestas commended several of our technicians for their proactive safety approach and leadership.
- One of our technicians received an HSE Safety Award from SGRE for raising mental health awareness and advocating for a new mental health reporting system, which has since been adopted by multiple SGRE projects.
- During a heavy lift project in Norway, SGRE praised one of our team members for meticulous attention to detail and strict adherence to safety protocols, which significantly contributed to the project's success.
- On the Yunlin Pre-Assembly Project in Taiwan, our team was recognised by SGRE for their consistent focus on safety.
- At the Macintyre Wind Farm in Australia, Nordex acknowledged our technicians for their outstanding dedication to safety.



SWIRE RENEWABLE ENERGY



# Sustainability

Focusing on People, Communities and Our Environment

**Swire Renewable Energy is committed to the sustainable development of its businesses.** We provide quality products and services to customers, strive to minimise the environmental impact of our activities and carefully consider the needs of our community, making positive contributions wherever we can.

"SwireTHRIVE" is a group-wide environmental sustainability strategy which will have an impact on every part of Swire's operations through six key targets.



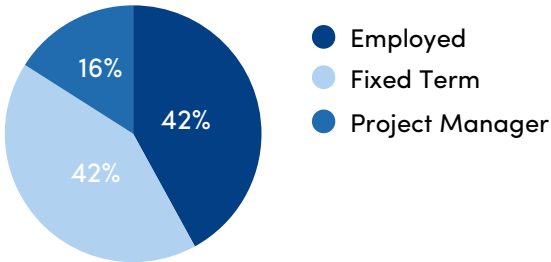
SWIRE RENEWABLE ENERGY



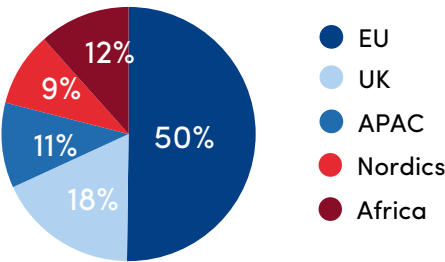
# Technical Capacity

## Current Active Technicians

### Employment Type



### Regional Deployment



### Nationalities



### 175+ Service Technicians



### 250+ HV and Electrical Technicians



### 200+ Mechanical / Installation Technicians



### 100+ Blade Technicians



SWIRE RENEWABLE ENERGY

# ► **Concept of Services**

# Concept of Services

Offshore Solutions Delivered

## Offshore Services Delivered by SRE



Technical  
Manpower  
Provision



Vessels Chartering &  
Marine Support  
Services



Full Scope Project  
Management,  
Engineering and Back  
Office Support



SWIRE RENEWABLE ENERGY



# Concept of Services

## Onshore Solutions Delivered

### Onshore Services Delivered by SRE



Technical  
Manpower  
Provision



Onshore Logistics,  
Transportation, and  
Heavy Lift Solutions



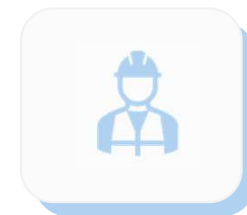
Full Scope Project  
Management,  
Engineering and Back  
Office Support



SWIRE RENEWABLE ENERGY

# Technical Manpower Provision

## Concept of Services and Solutions Delivered



### Service/O&M Technicians

- Authorised Technicians
- Competent Technicians
- Electricians
- Mechanics
- Painters

### Blade Technicians

- Authorised Technicians
- Irata Level 1/2/3 Technicians
- Blade Repair specialists
- GWO Blade Repair Training

### Installation Technicians

- Competent Installation Technicians
- Tower Technicians
- Pre-Assembly Technicians
- Turning Device Users
- Lifting Foremen
- Logistics Assistants
- Warehouse Technician

### HV Technicians

- HV Troubleshooters
- HV Authorised Persons
- Cable Jointers/Cable handling technicians
- HV Service Technicians
- HV Test/Walkdown Technicians
- HV Commissioners

# Vessel Chartering & Marine Support

Concept of Services and Solutions Delivered



## **Marine Engineering & Management Department delivering:**

- Vessel Chartering
- Vessel sourcing from open market (flexibility)
- Suitability Surveys
- Marine project solutions
  - Dredging
  - Towing
  - Mooring
- ROV & Underwater inspections
- WTG Transport & Marine Engineering

## **Vessel Types**

- Crew Transfer Vessel
- Service Operation Vessels
- WIVs
- Construction support vessels (CSVs)
- Inspection, maintenance and repair subsea vessels (IMR)
- Cable laying vessels (CLVs)
- Survey Support Vessels
- Remotely Operated Vehicles (ROV)
- Walk-to-Work systems (W2W)



SWIRE RENEWABLE ENERGY

# Onshore Logistics, Transportation and Heavy Lift

## Concept of Services and Solutions Delivered



### Onshore Logistics & Heavy Lift Solutions

- Project Logistics Experts
- Heavy Lift Specialists
- Mechanical Engineering Department
- Project Management Expertise
- WTG Transportation Vessels
- Procurement

### Delivering

- Heavy Lift Cranes (Component Exchange)
- Heavy Lift Cranes (Installation)
- WTG Transportation
- Major Component Transportation



# Full Scope Project Delivery

## Concept of Services and Solutions Delivered



### Project Management & Back Office

- Project Managers
- HSE Managers & Coordinators
- Electrical & High Voltage Engineering
- Mechanical Engineering
- Blade Engineering
- Transport & Marine Engineering
- Procurement
- Marine Coordination & Operations Management
- Warehousing
- Travel Specialists
- Training & Compliance Specialists
- Site Management
- QA Officers
- Drone Specialists

### Training

- Electrical Training Center
- Blade Training Center

### Delivering:

- Risk Assessments
- Method Statements
- Quality Assurance
- Service Vehicles
- Tooling & Equipment
- Personnel mobilization
- Training & Certification compliance

# ► Service Portfolio

# Service Portfolio

## What we offer



### Pre-Assembly & Installation

Manpower  
Pre-Assembly  
Installation  
Commissioning  
Internal Grid  
Maintenance & Repair  
Troubleshooting  
Decommissioning



### Blade

Manpower  
Inspection  
Evaluation  
Laminate Repair  
Maintenance  
Leading Edge Protection  
Warranty  
Bonding Repairs  
Lightning Protection System  
Structural Repairs – Cat 1-5



### HV and Electrical

Manpower  
HV /MV Service  
Electrical Upgrades  
Installation  
Commissioning  
Substation Services  
Statutory Inspections  
Operational Management  
Test & Termination



### Turbine

Manpower  
Electrical Maintenance  
Mechanical Maintenance  
M&E Service  
Troubleshooting  
Retrofit  
End of Warranty Campaigns  
Main Component Exchange  
Foundation Maintenance



### Marine Services

Vessel Charter  
Marine Assurance & Inspection  
Logistics & Vessel management  
Port & Base Logistics  
(Dredging)  
Mooring & Towage  
Subsea BOP (ROV)  
Major Component Transport



**SWIRE RENEWABLE ENERGY**

# Our Services

## What we offer

**Swire Renewable Energy specialises in inspection, repair and maintenance services for wind turbine Manufacturers and Developers.**

We provide electrical, mechanical and turbine services and expertise across the renewable energy supply chain from the construction phase, through operations to repowering and decommissioning.

### Blade

Manpower | Inspection & Evaluation | Laminate Repair | Maintenance | Leading Edge Protection | Warranty | Bonding Repairs | Lightning Protection System | Structural Repairs – Cat 1-5

### Turbine

Manpower | Electrical & Mechanical Maintenance | M&E Servicing | Troubleshooting | Retrofit | End of Warranty | Main Component Exchange | Foundation Maintenance

### Marine Services

Manpower | Vessel Charter | Marine Assurance & Inspection | Logistics & Vessel Management | Port & Base Logistics (Dredging) | Mooring and Towage | Subsea BOP (ROV) | Major Component Transport

### HV and Electrical

Manpower | HV /MV Service | Electrical Upgrades | Installation | Commissioning | Substation Services | Statutory Inspections | Operational Management | Test & Termination

### Pre-Assembly & Installation

Manpower | Pre-Assembly | Installation | Commissioning | Internal Grid | Maintenance & Repair | Troubleshooting | Decommissioning

# Blade Services

## End-to-End Blade Services

Fully functional blades are pivotal to uphold performance. Identifying the most frequent causes to damage repair and servicing those areas, can prevent eventual operation stops.

Swire Renewable Energy offers complete ownership of the full end-to-end service solution or a bespoke modular approach specific to client requirements.

- Inspection
- Blade Service
- Evaluation
- Lightning Damages
- Laminate Repairs
- Leading Edge Protection
- Warranty
- Bonding Repairs
- Lightning Protection System
- Maintenance





# Installation Services

## End-to-End Project Support Services

Our experience includes electrical and mechanical installation of all major turbine models and the various foundation systems.

We provide customer support with all possible staffing arrangements, including individual technicians, teams working under customer site management and full scope project solution.

- Cable work and testing
- Project management
- Commissioning
- Quality acceptance/inspection
- Site management
- Termination
- Cable pull-in
- Loading and unloading
- Cranes, lifts and aviation lights
- Foundation, tower, nacelle and blades
- Substation and service platforms
- Temporary hang-off
- Permanent hang-off
- Transformer and switch gear installation





# Turbine Services

## End-to-End Project Turbine Services

Our deliveries can vary from a single technician to a fully managed and scheduled maintenance program covering all electrical and mechanical work scopes.

Using Swire Renewable Energy as your trusted service partner provides a focus on safety, delivery, quality and collaboration in the most optimum way.

- Manpower provision
- Electrical Maintenance
- Mechanical Maintenance
- Troubleshooting and repair services
- Retrofit & Upgrades
- End of Warranty campaigns
- Component exchanges
- Foundation maintenance



# HV and Electrical Services

## End-to-End Electrical Services

SRE provides breakdown services to ensure a minimum turbine downtime, and our dedicated electrical teams are ready to solve any HV or MV failure 24-7-365.

Our technicians are the best trained HV WTG technicians in the industry and their skills are continually updated with relevant courses and training.

- HV/MV service
- Electrical upgrades
- Trouble shooting and repair
- Test & termination
- Substation services
- Statutory inspection
- Installation & Commissioning
- Operational management
- Prefabricated cable sets
- Build-up and test of switchgear and HV cabinets
- Service 24-7-365
- Training



# Marine Support Services

## Marine Management Services

Swire Group has decades of marine services experience, having supporting offshore energy projects around the world. Our services include marine support for floating and fixed bottom turbines during construction, installation, operations and decommissioning.

We have a pool of experienced offshore captains to support with all aspects of marine management for offshore projects. We installed the first floating offshore wind turbine in Scotland at Kincardine.

- Vessel Chartering
- Marine Coordination
- Vessel Suitability Surveys
- Quality acceptance/inspection
- Site management
- Installation & Commissioning
- Inspection, Maintenance & Repair
- ROV and underwater inspections
- Loading and unloading
- Operations Management

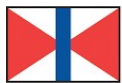


# Marine Support Services

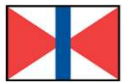
## Integrated and Flexible Marine Solutions

Working together with our sister companies – Swire Shipping, Swire Bulk and Swire Projects, Swire Renewable Energy can provide an integrated one-stop solution including flexible and complementary marine solutions in compliance with our clients' expectations.

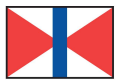
Swire's group involvement in the marine industry dates back more than 150 years when Swire Shipping was founded in 1872. Since then, Swire had interests covering a wide range of activities supporting both offshore energy projects and deep-sea liner and projects shipping around the world.



SWIRE SHIPPING



SWIRE PROJECTS



SWIRE BULK



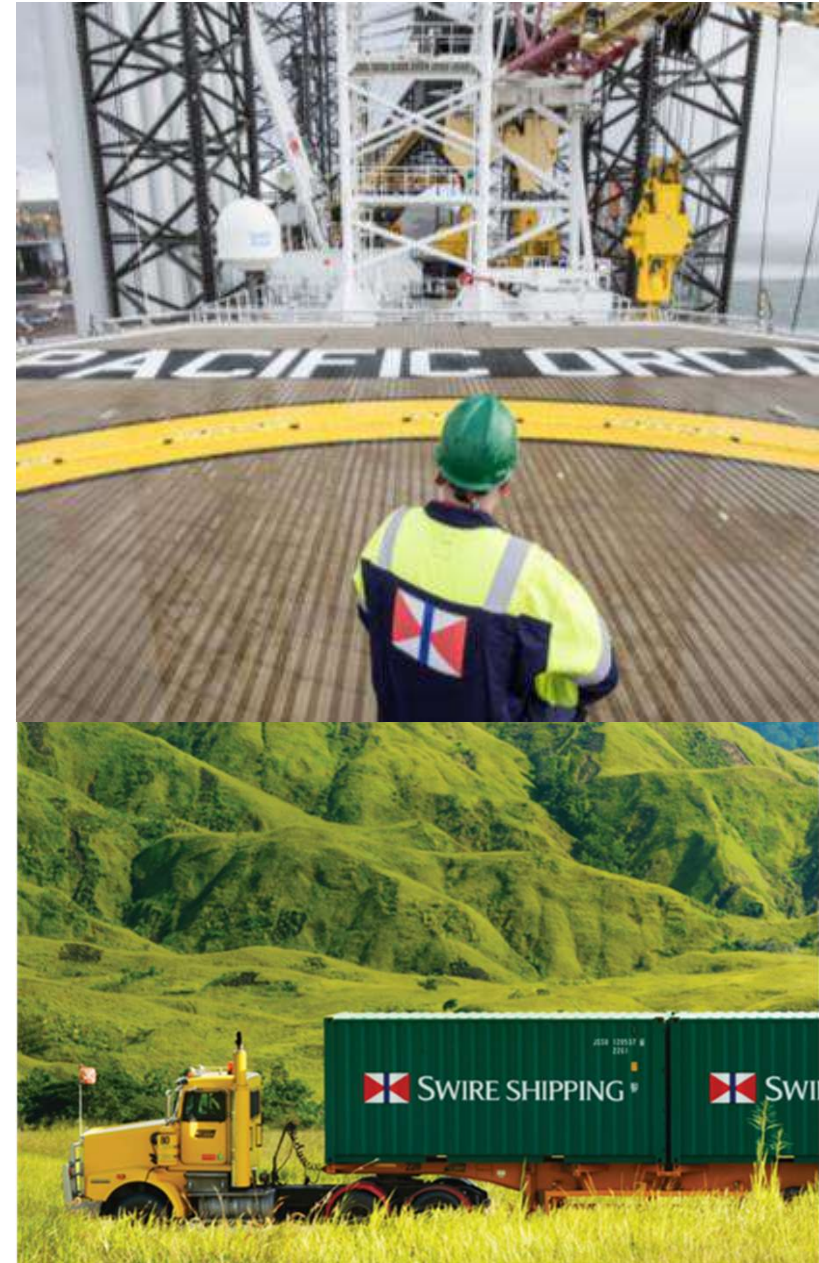
SWIRE RENEWABLE ENERGY



# Marine Support Services

## Track Record and Key Experiences

- Multipurpose liner, bulk and specialist heavy lift and project cargo shipping
- Integrated logistics, port and shipping agencies services
- Designing, building, operating and chartering specialist vessels such as WIVs, construction support vessels (CSVs), inspection, maintenance and repair subsea vessels (IMR), cable laying vessels (CLVs), offshore support vessels (OSVs), survey support vessels, remotely operated vehicles (ROV), crew transfer vessels (CTVs) and walk-to-work systems (W2W) in benign waters and challenging weather conditions;
- Marine and project management for floating and fixed bottom turbines during construction, installation, O&M and decommissioning phases;
- Transport and Marine Engineering, such as feasibility and conceptual studies, lifting, lashing and stowage plans, port captains in key loading-discharging locations;
- Complementary services including provision of marine advisors and mooring masters and tow masters for owners, developing mooring and towage plans, marine inspection, audits and warranty surveys, leasing of offshore equipment and containers.



# Marine Support Services

## Key Service Offerings

- Multipurpose Liner, Bulk and Specialist Heavy Lift and Project Cargo Shipping
- Integrated Logistics, Port and Shipping Agencies Services
- A wide range of Offshore Vessel Chartering and Suitability Surveys
- Marine Coordination and Operations Management
- Provision of Specialist Manpower e.g. Marine Advisors, Port Captains, Marine Assurance, Client Reps
- Installation & Commissioning
- Inspection, Maintenance & Repair
- Marine Project Solutions e.g. Dredging, Towing, Mooring
- ROV and Underwater Inspections
- Transport and Marine Engineering
- Loading and unloading, quality acceptance/inspection
- Site management, warehousing, cargo management projects
- Decommissioning and Disposal

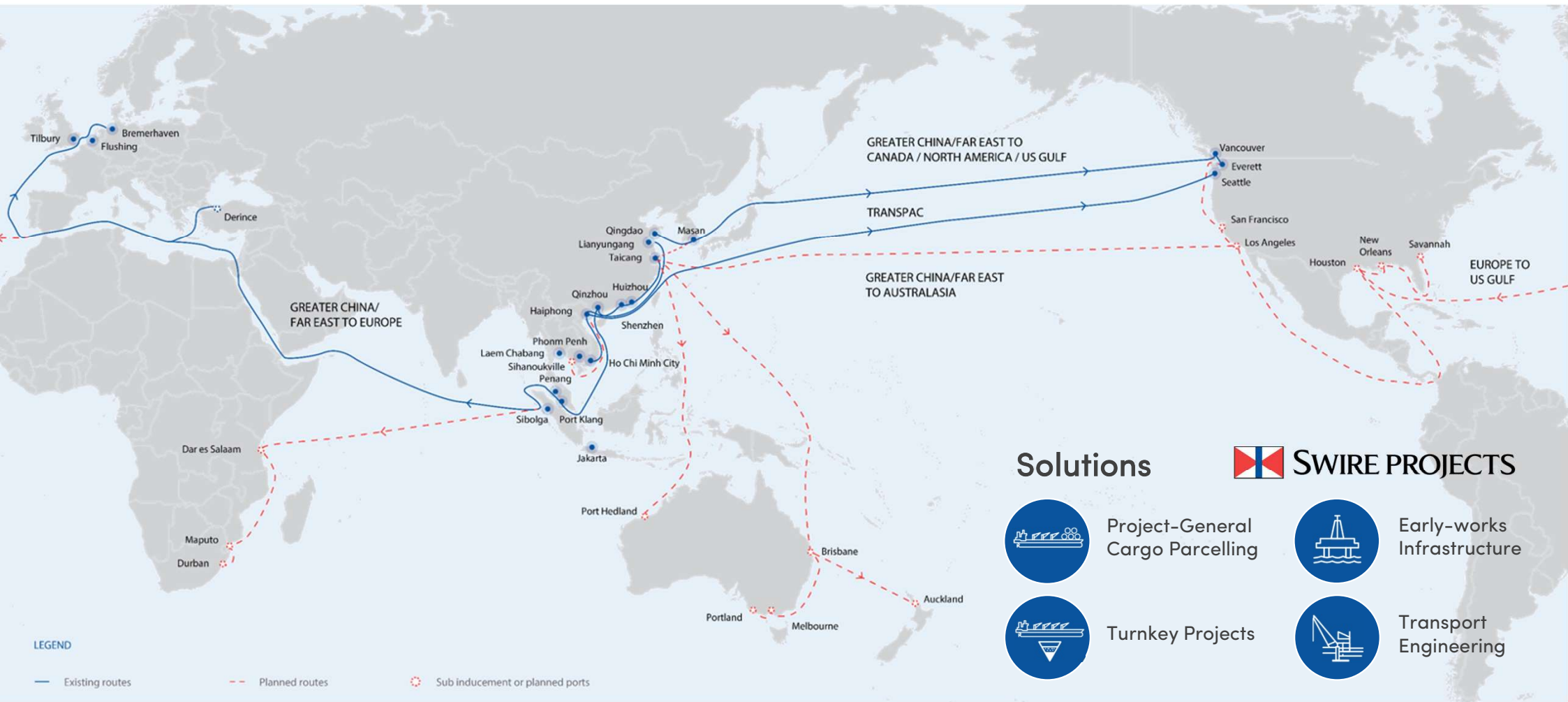


SWIRE RENEWABLE ENERGY



# Marine Support Services

## Project Routes



# Wind Measurement Services

## Integrated service

SRE provides turnkey meteorological mast installation and wind measurement services, including site surveying, construction, manufacturing and installation, instrumentation, and decommissioning of the temporary masts with transportation to storage facilities.

- Met Mast Installation (short-term and long-term)
- Met Mast Decommissioning
- SODAR/LIDAR Installation and Maintenance
- Data Monitoring



# Our customers

Trusted by global industry players



# ► **Reference Projects**

# HV Services

## Reference Projects



### Wind Farm:

Baltic 1 | Baltic 2 | Hohe Se | Albatross Wind Farms

Turbine type: SWT-2.3-93 + SWT-3.6-120 + SWT-7.0-154



### Year:

2011 - 2022



### Scope of Work:

- Delivery of all internal flexible HV cables.
- Installation, commissioning and test of HV system, transformer & Switchgear. First Energization of the turbine.
- Annual HV/LV maintenance on all WTGs including inspections, functional test and cleaning of HV/LV electrical interface (HV switchgear, HV/LV transformer, HV cables and connectors and LV cables or busbar and LV main circuit breakers), taking and handling routine oil samples and DGA tests.





# Turbine Services

## Reference Projects



### Wind Farm:

Ramsgate | Ormonde Wind Farms



### Year:

2022 – 2023



### Scope of Work:

- Summer maintenance and service campaign for two wind farms in the Southeast coast of England, providing our clients with the annual service and maintenance of 130 turbines inclusive of 8 teams of AT's / CT's, project management and HSE responsibility
- Manual oil exchanges
- Pitch cylinder exchanges
- Corrosion and paint works
- Trouble shooter support
- Navigation light campaign





# Bolt Exchange

## Reference Projects – Turbine Services



**Wind Farm:**  
Kriegers Flak

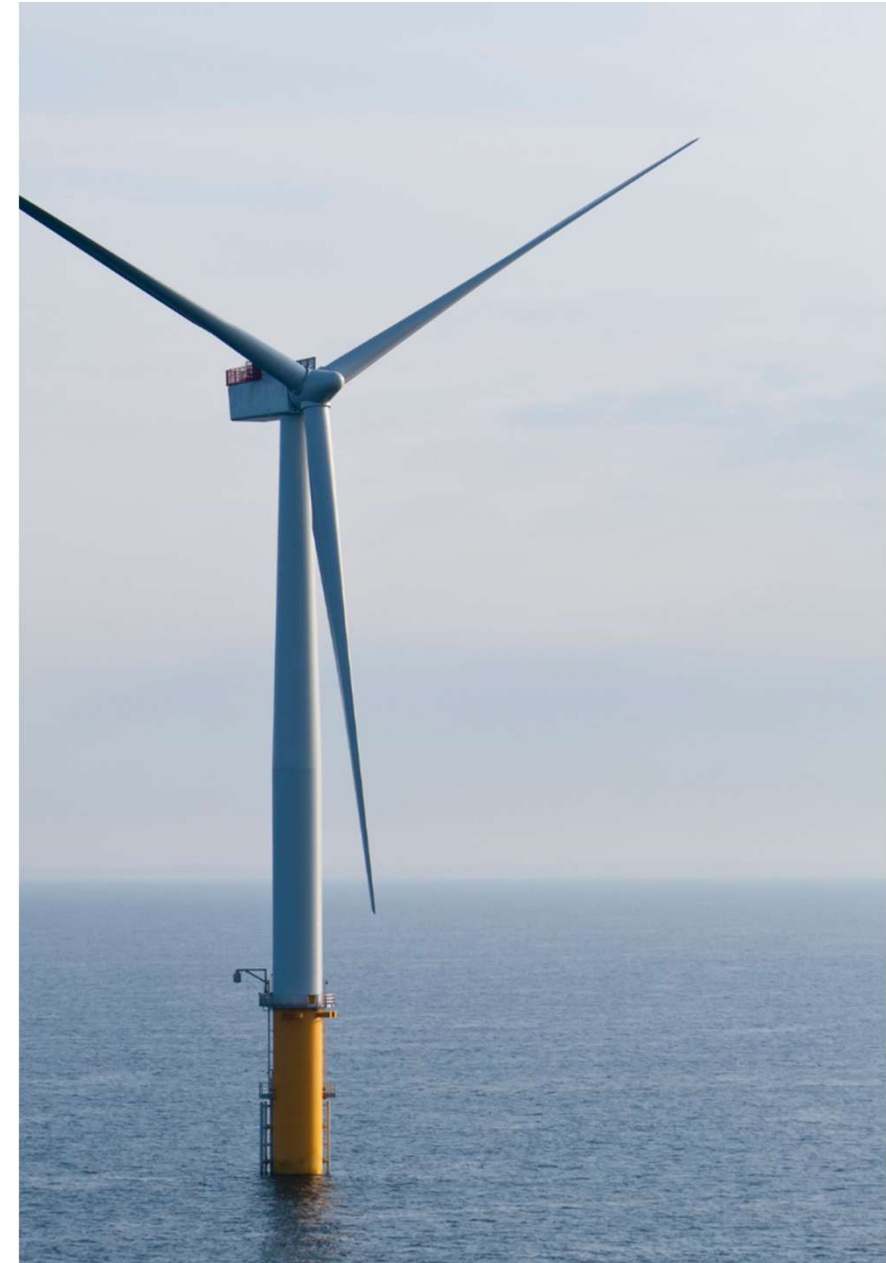


**Year:**  
2023



### Scope of Work:

- Exchange of all bolts in TP/MP flange connection at 10 offshore locations (114 bolts per location).
- Full project management
- Qualified installation crew, onshore handling, packaging and unpacking of bolts and tools. Coordination of cargo CTV, preparation of RAMS and full documentation package.



# Offshore Blade Repair

## Reference Projects – Blade Services



**Wind Farm:**  
Walney

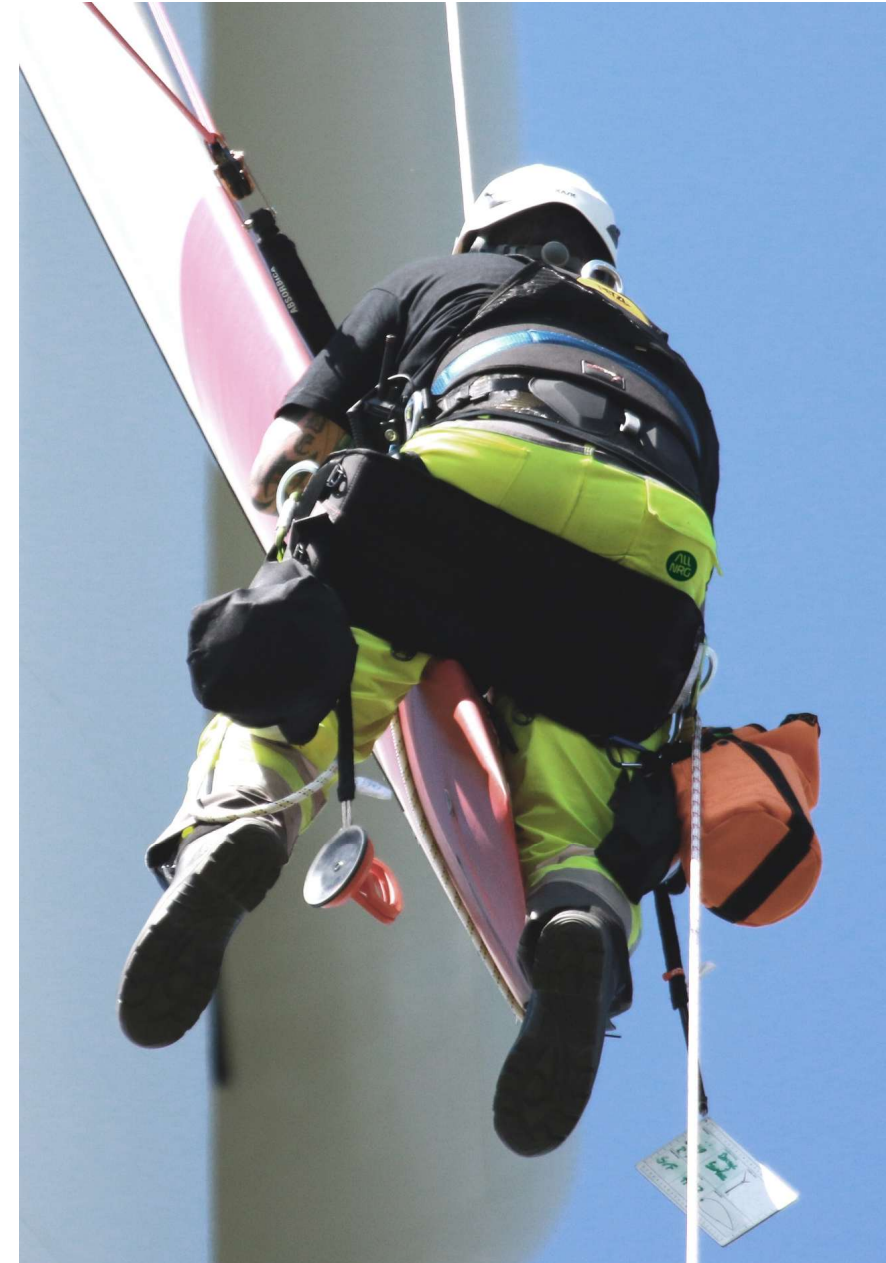


**Year:**  
2023



### **Scope of Work:**

- Full project management of LEP installation on 102 WTGS – SWT 3.6-107 / 120 on west coast UK for leading Offshore Wind Developer
- Fully qualified and trained IRATA Level 1 and 3 Technicians for Rope Access and Repair Work
- RAMS development, Vessel charter and Marine Management for project duration
- 3D Drone Inspection of repairs for quality assurance
- Completed safely and ahead of schedule resulting in 8 extra days of production for the customer.



# Major Components

## Reference Projects – Marine Services



### Various Projects

SGRE, Vestas, Orsted, Vattenfall, Van Oord



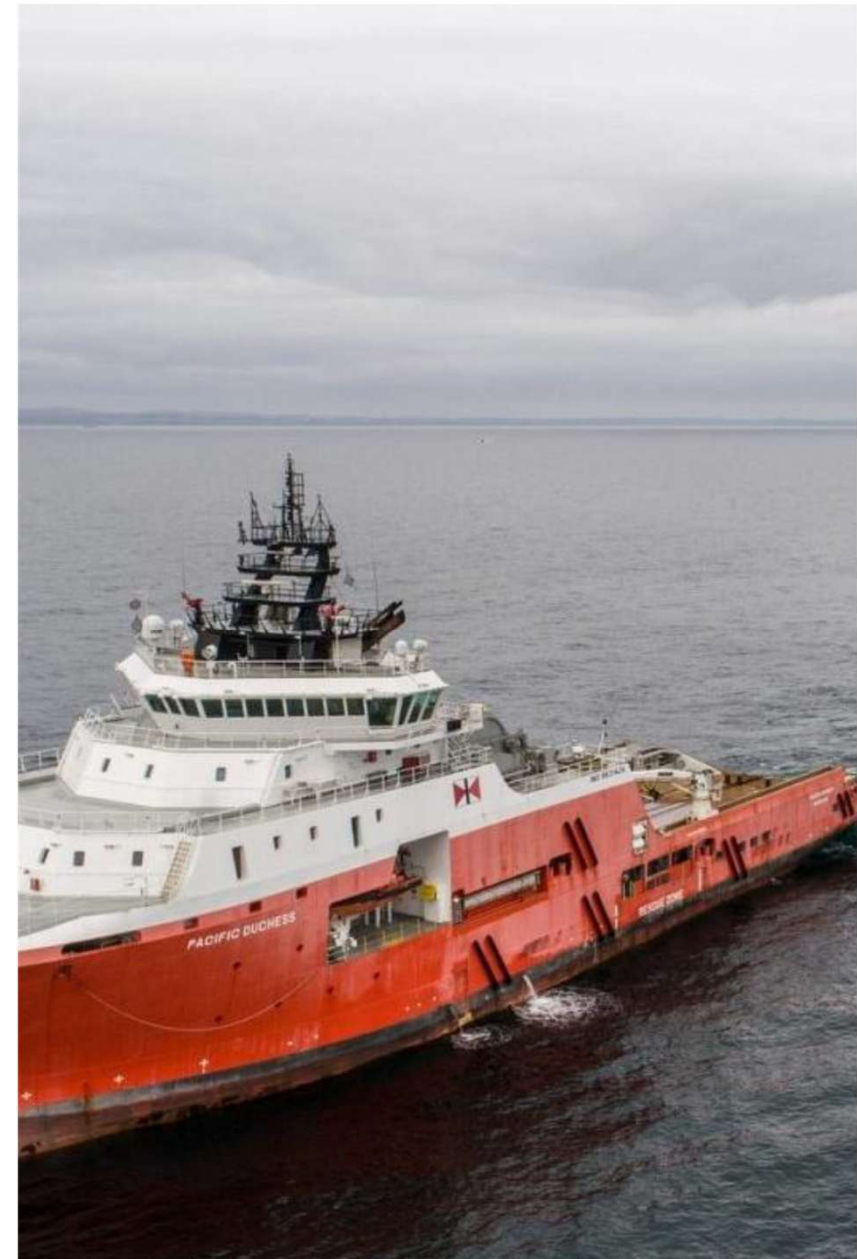
### Year:

2008 – 2023



### Scope of Work:

- Switchgear replacements inclusive of lifting supervisors
- Transformer exchanges – project management and execution
- Blade exchanges – labour and engineering support
- Gearbox exchanges – labour and engineering support
- Vessel Charter – full management and execution of installation of mooring components for first floating wind demonstrator in UK (Kincardine)



# Floating Wind Mooring

## Reference Projects – Marine Services



### **Kincardine Floating Wind Turbine Demonstrator Project**

Kincardine Offshore Windfarm Limited (KOWL)



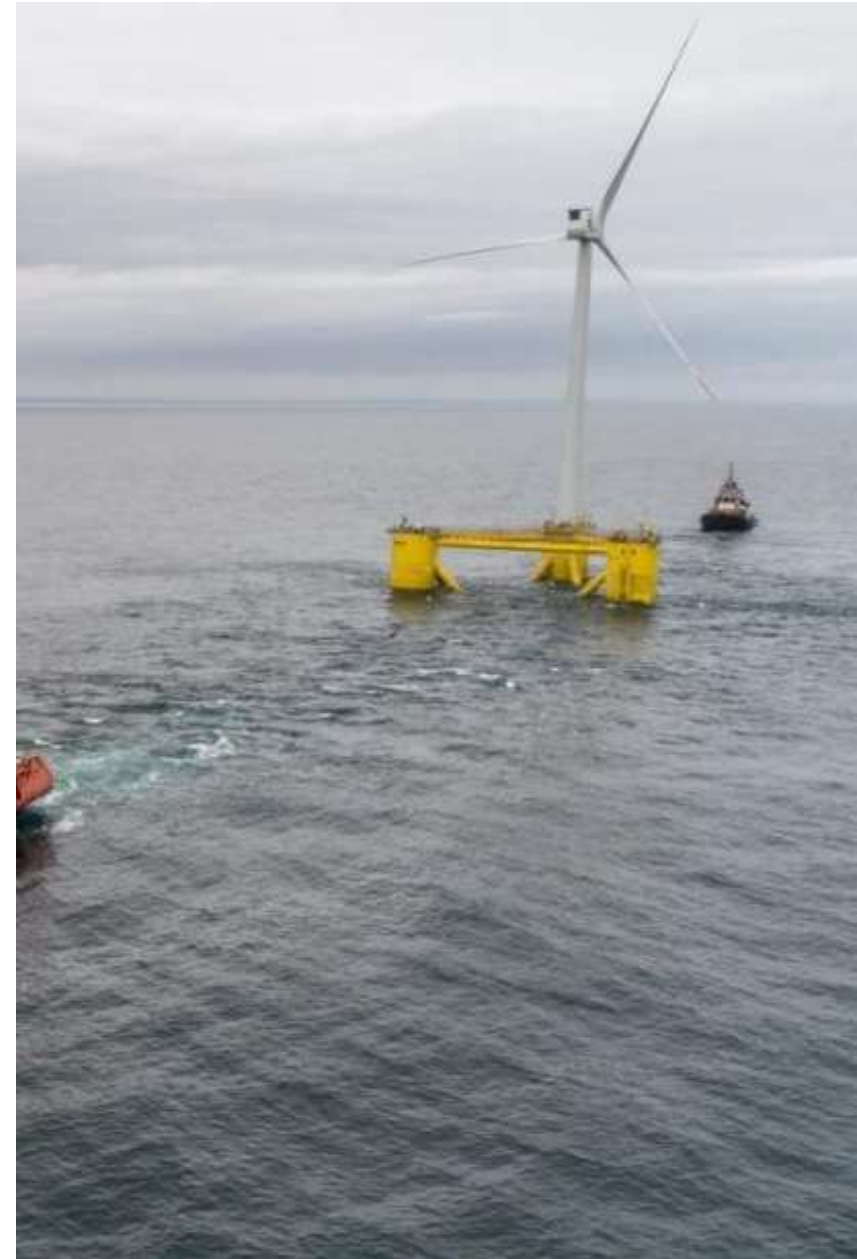
#### **Year:**

2018



#### **Scope of Work:**

- Vessel Charter – full management and execution of installation of mooring components for first floating wind demonstrator in UK (Kincardine)





# Marine Coordination, Management and Vessel Suitability Surveys

## Reference Projects – Marine Services



**Wind Farm:**  
Walney



**Year:**  
2023



### Scope of Work:

- Swire was engaged deliver the full project management of LEP installation on 102 WTGS – SWT 3.6-107 / 120 on west coast UK for leading Offshore Wind Developer, including fully qualified IRATA 1 and 3 technicians, 3D drone inspections of repairs for quality assurance, RAMS and warehouse management.
- As part of service delivery, Swire was responsible for the vessel chartering, marine management and coordination for the project duration.
- This includes conducting vessel suitability surveys and ensuring the vessel is fit for purpose prior to going onshore.



# Shipping of Wind Turbines

## Reference Projects – Marine Support Services



### Kaiwera Downs Wind Farm (Stage 1)

Vestas



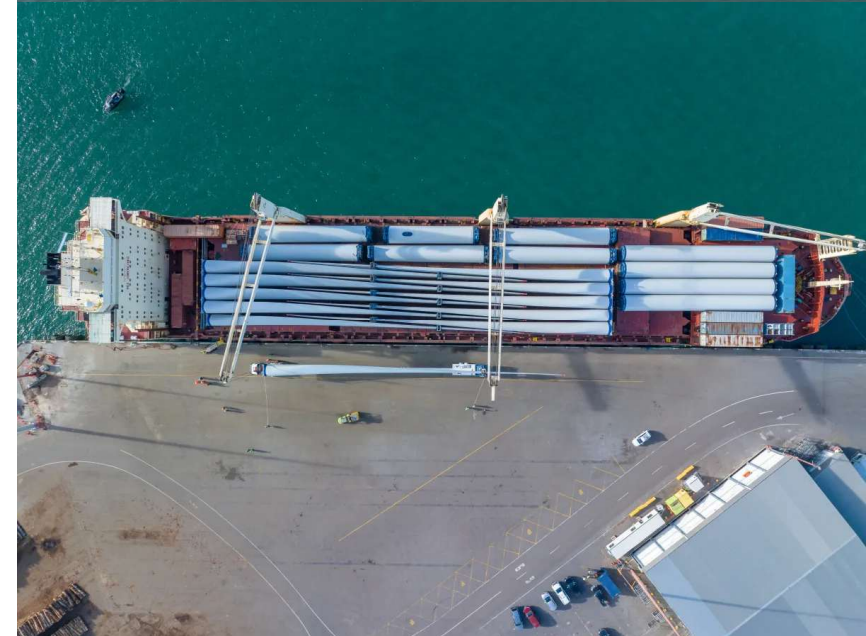
### Year:

2023



### Scope of Work:

- Transportation of 10 complete sets of Vestas V136 wind turbine nacelle, blades and towers from China to Bluff, New Zealand for the Kaiwera Downs Wind Farm Project (Stage 1).
- Shipped using on Swire Projects' H-Class vessel, Pacific Humility (28,500 DWT, 3x80t cranes).





# Shipping WTG Components

## Reference Projects – Marine Support Services



**Kathleen Valley Lithium Project**  
Western Australia



**Year:**  
2023



### **Scope of Work:**

- Transport wind turbine components (81 m long blades and tower sections) from Taicang, China to Geraldton, Australia for the Kathleen Valley Lithium Project in Western Australia.
- Shipped using on Swire Projects' H-Class vessel, Pacific Hero (28,500 DWT, 3x80t cranes).







# WTG Tower Bulk Shipping

## Reference Projects



### WTG Tower Bulk Shipping from China to Ukraine

#### Scope of Work:

- Transportation of 60 tower sections with 2 tier stacking from Taicang, China to Chornomorsk, Ukraine



# Met Mast Installation

## Reference Projects



### **Power Performance Measurement Mast Installation for Envusa Energy**

Eastern Cape, South Africa



#### **Year:**

2023 - 2024



#### **Scope of Work:**

- Installation of 6 Meteorological Masts
  - 3 Temporary Met Masts for short-term placement at turbine sites
  - 3 Permanent Met Masts for enduring use in power performance testing and wind turbine power generation verification
- Site Surveying, Civil Construction, Manufacturing and Installation, Instrumentation, and Decommissioning of temporary masts.







# MAINTAINING A **RENEWABLE FUTURE**

[swire-re.com](http://swire-re.com)



**SWIRE RENEWABLE ENERGY**