

COMMAND & CONTROL

Collect and unify data to optimize your security processes with **LINK™**, your smart **PSIM** solution



CONNECTED SYSTEMS :



**VMS
VIDEO WALL
GATEWAY
OPTRONICS**

**CTMS
BMS
SCADA
GIS**

**RADAR 2D/3D
LIDAR**

**LINK™
ipartner**

**INTERCOM
TOIP / VOIP**

ACCESS CONTROL

**ALARM PANEL
GAS AND LEAK DETECTION
DISTRIBUTED FIBER OPTIC
SENSING**

**JAMMER
DRONE IN THE BOX**

INDUSTRY / TERTIARY



Multi-site, high levels of availability, production and logistics challenges, different levels of safety and security, visitor management, flow management, maintenance in operational conditions are all points to be taken into account when managing your safety and security systems.

LINK™ offers a centralized solution, enabling heterogeneous technical security, safety and information systems to work together to secure your site's activity.

TERRITORIES

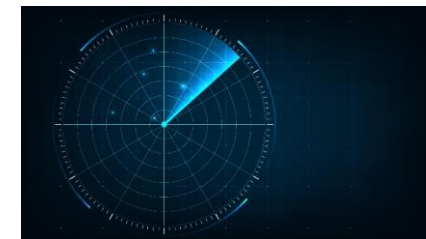


On a regional scale, flow management is a crucial issue. Multi-modality and the need for cooperation and management between authorities and services require flexible, agnostic software tools.

LINK™ offers essential functions for managing a territory:

- Dashboard, service log, workflow management
- Modules for traffic management and video ticketing
- Partner video gateway
- Control room management
- Real-time localization
- Pooling of resources

DEFENSE



LINK™ helps secure and integrate your systems in a theater of operations:

- Physical security
- Drone
- Drone tracking and classification
- Anti-drone combat
- 3D Radar and LIDAR
- Optronics solutions
- Jammer
- Mission management
- Sharing information with C4ISR

www.ipartner-it.com

ipartner

