



RABWIN GROUP OF COMPANIES

- ❖ RABWIN INDUSTRIES PRIVATE LIMITED – CORPORATE
- ❖ RABWIN FOUNDRY
- ❖ RABWIN HYDRAULICS
- ❖ RABWIN AUTOMATION
- ❖ RABWIN JAINIDHI
- ❖ RABWIN INTELLIGENT
- ❖ RABWIN MOULDSMITH

Specialist in Precision Manufacturer of Parts & Assemblies



RABWIN INDUSTRIES PRIVATE LIMITED – Operates in module system

- ❖ Automotive
- ❖ Aerospace
- ❖ Heavy Engineering (Windmill, Textile, Railway, Machine Tool)
- ❖ Pumps
- ❖ Switch Gears
- ❖ Valves

Vision

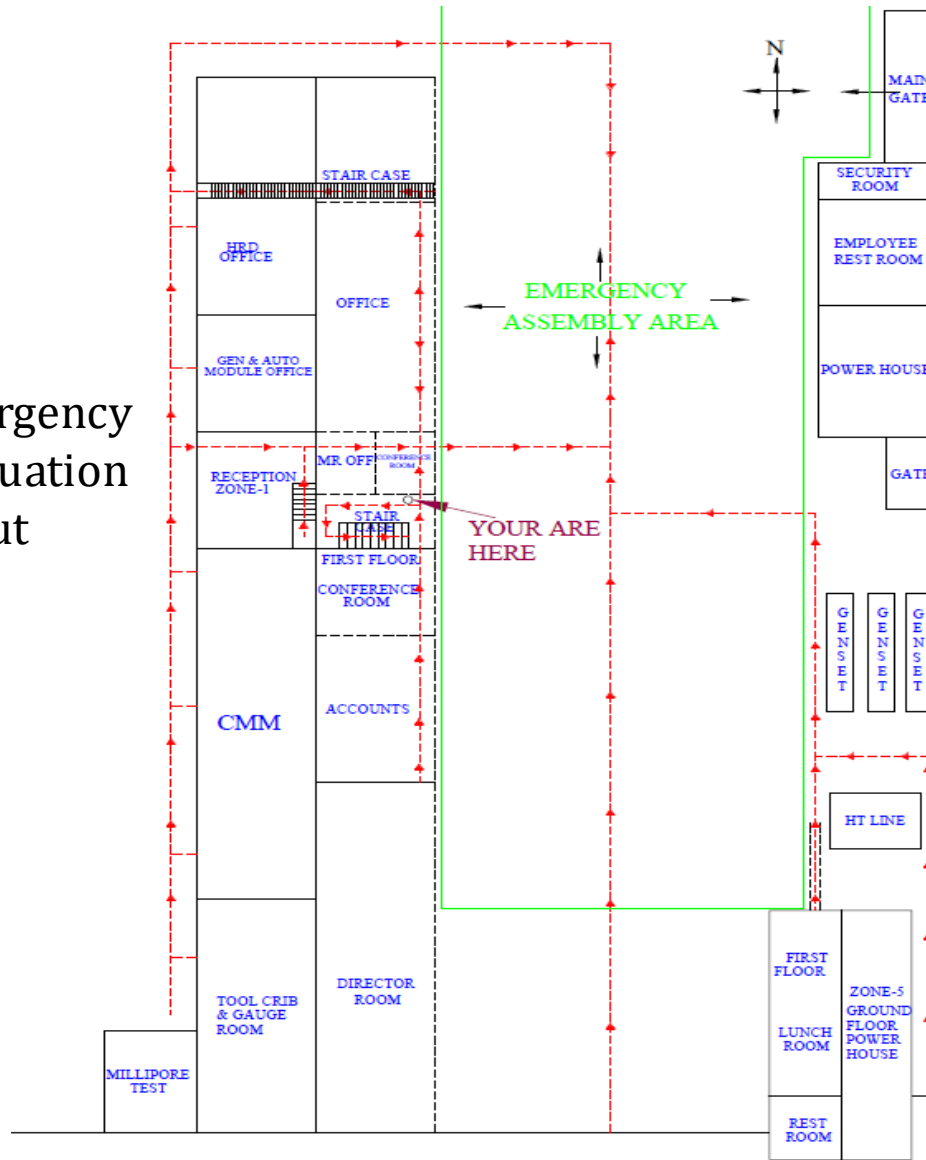
“Creating a world class industry through consistent innovation to best serve our customer needs”

Mission

- ❖ **Empower** : Inspire and motivate employees.
- ❖ **Leveraging** : Use of latest Industrial trends and technologies.
- ❖ **System** : Strictly Implemented fair and ethical organisational system.
- ❖ **Sustainability** : Contribute to a safer, cleaner and more sustainable world for future.

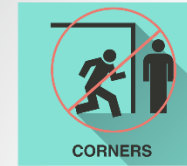
Safety moment

Emergency Evacuation layout



PREVENTING SLIPS, TRIPS, AND FALLS

DON'T RUSH



WEAR PROPER SHOES



KEEP FLOORS CLEAN & DRY



WATCH WHERE YOU'RE GOING



RABWIN Industries - Facilities



Unit 1 - Machine shop

Land Area : 154,000 Sq.ft (14,312 Sqm)

Buildup Area : 97,500 Sq.ft (9,061 Sqm)



Unit 3- Heavy Machines shop

Land Area : 240,000 Sq.ft (23,350 Sqm)

Buildup Area : 132,000 Sq.ft (12,850 Sqm)



RABWIN JAINIDHI PVT LTD HPDC&GDC Aluminum Castings

Land Area : 45,000 Sq.ft (4,500 Sqm)

Buildup Area : 40,000 Sq.ft (4,050 Sqm)



UNIT 2-RABWIN MOULDSMITH PVT LTD Special machines building

Land Area : 60,000 Sq.ft (5,836 Sqm)

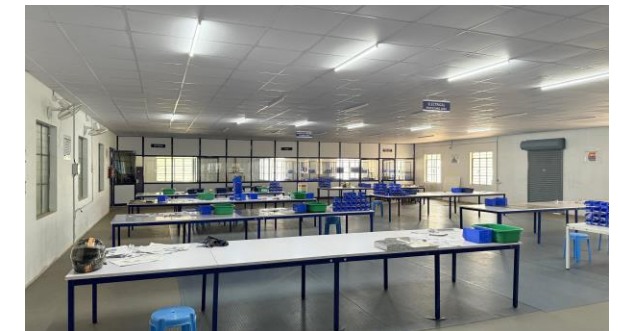
Buildup Area : 32,000 Sq.ft (3,112 Sqm)



Unit 4 - Iron Foundry

Land Area : 381,000 Sq.ft (37,100 Sqm)

Buildup Area : 100,000 Sq.ft (9,730 Sqm)



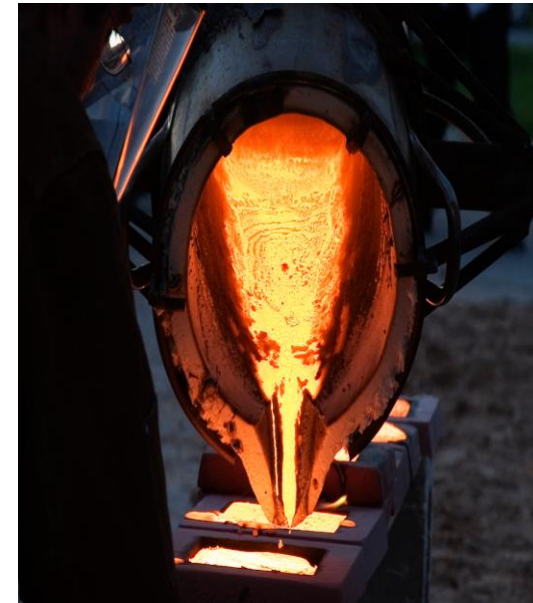
RABWIN INTELLIGENTS PVT LTD Assembly Automation

Land Area : 18,000 Sq.ft (1673 Sqm)

Buildup Area : 15,000 Sq.ft (1394 Sqm)

Unit 4 – Iron Casting Foundry

- Acquired an existing steel foundry in January 2024.
- Converting to Iron castings – CI & SG/DI
- Moulding - No-bake Furan Process
- Casting ranging from 30kg – 2000kg
- Production Capacity 750 tonnes
- Land Area: 3,80,000 Sqft (38,000 SqM)
- Build-up area: 1,00,000 SqFt (10,000 SqM)



Unit 4

Iron Casting Foundry



List of Equipments

- LECO GAS ANALYZER
- Spectro Machine
- 3 D LMM Dimension Machine
- PMI Machine
- CARL ZEISS Micro scope
- Ultrasound Test Machine
- MPI Machine
- BRINELL HARDNESS TESTING MACHINE
- METALLOGRAPHY IMAGE ANALYZER
- Melt Furnace (2 MT & 1 MT)
- Melt Furnace (0.3 MT & 0.75 MT)
- 2 MT Ladle
- 1 MT Ladle
- 30 MT Mixer
- 10 MT Mixer
- Shell Core Machine
- Shell Mould Machine
- 3.5 MT & 1 MT HT Furnace
- 6 MT HT Furnace
- Wet Scrubber M/c
- " NOVA CAST " simulation software

Technical data for Fast Loop Line FLL

Type Of Castings:	Iron
Metal:	Gray Iron & DI
Max Moulds Size:	1000 X 1100 X 430/430 mm
Bolster Plate Size:	1200 X 1200 mm
Rollover Cycles/Hour Max:	60
Pouring Plate Size:	1200 X 1200 mm
Output:	10 Requested Moulds Per Hour
Mixer Size And Process:	T36/30S – Phenolic - Alkaline
Sand Reclamation Plant:	10-12 T/H
Coreshop:	T36/10

Hand moulding Max box Size: 2000 x 2500 mm

Rabwin Industries – Organization Structure



Managing Director
Mr. P R ARUCHAMY



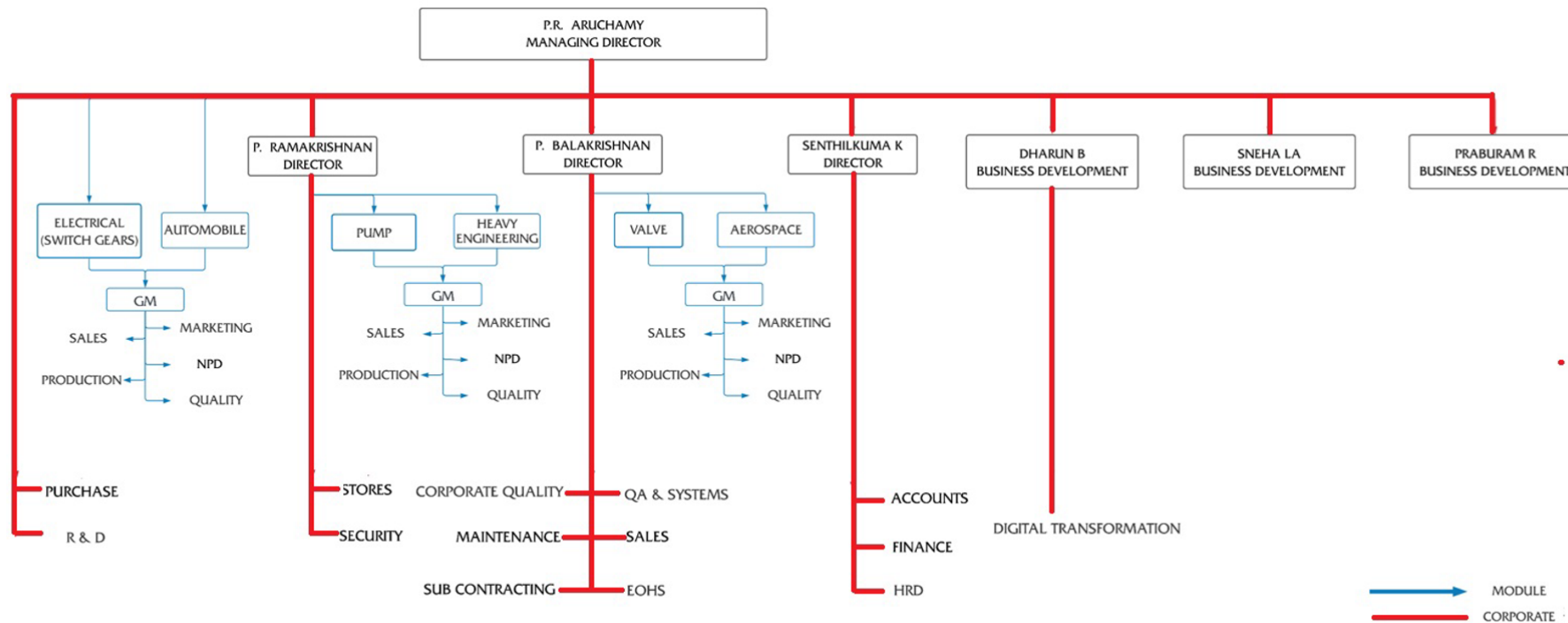
Director
Mr. P RAMAKRISHNAN



Director
Mr. P BALAKRISHNAN

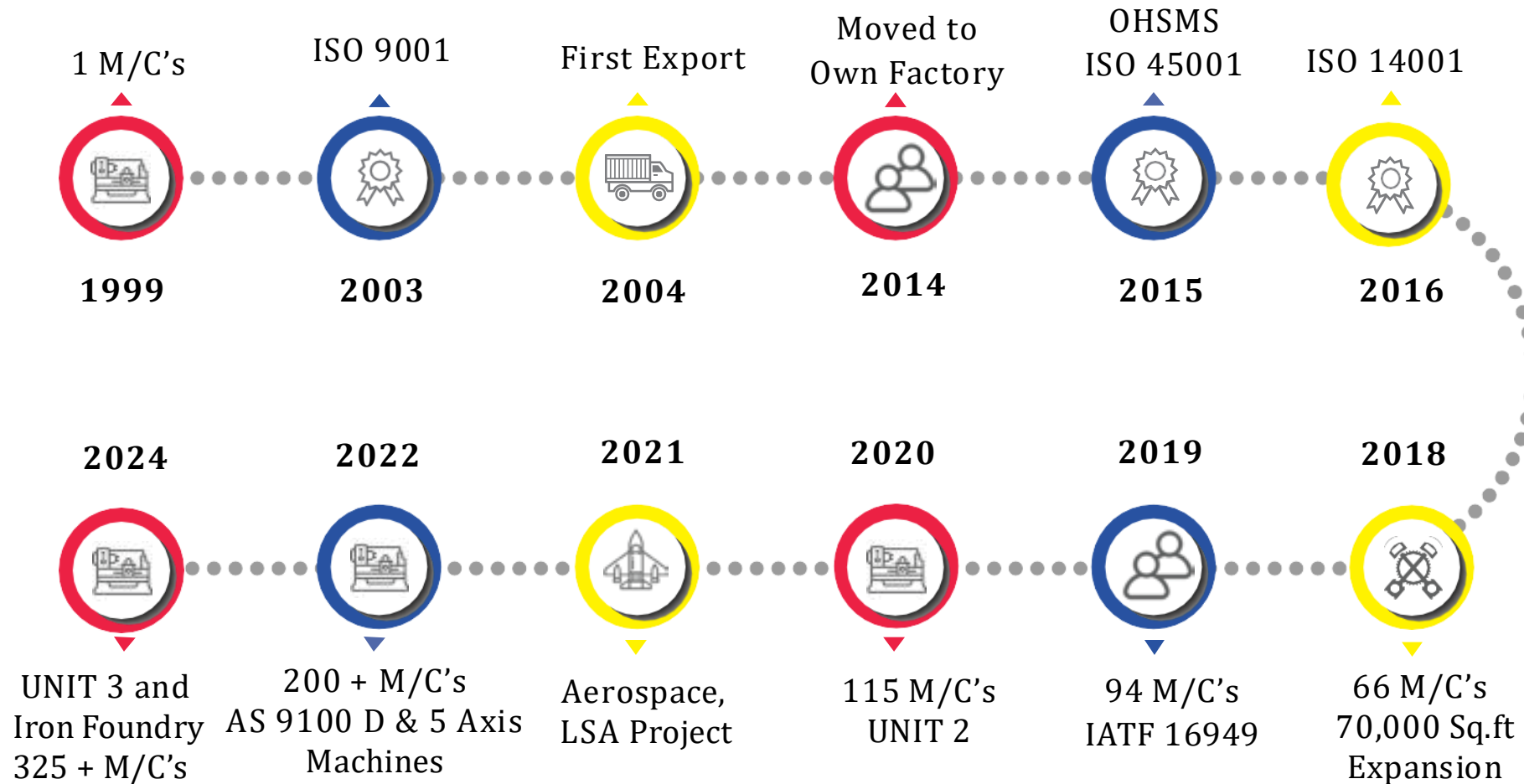


Director
Mr. K SENTHILKUMAR



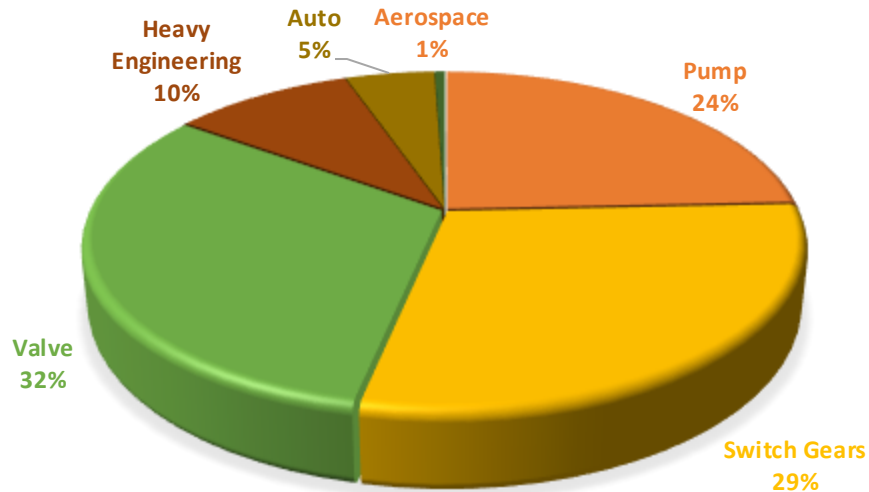
Our Growth Story

Rabwin Industries was started in the year 1999 with 3 employees and 1 CNC machine. With continuous improvement and development, we are now equipped with more than 320+ CNC machines.

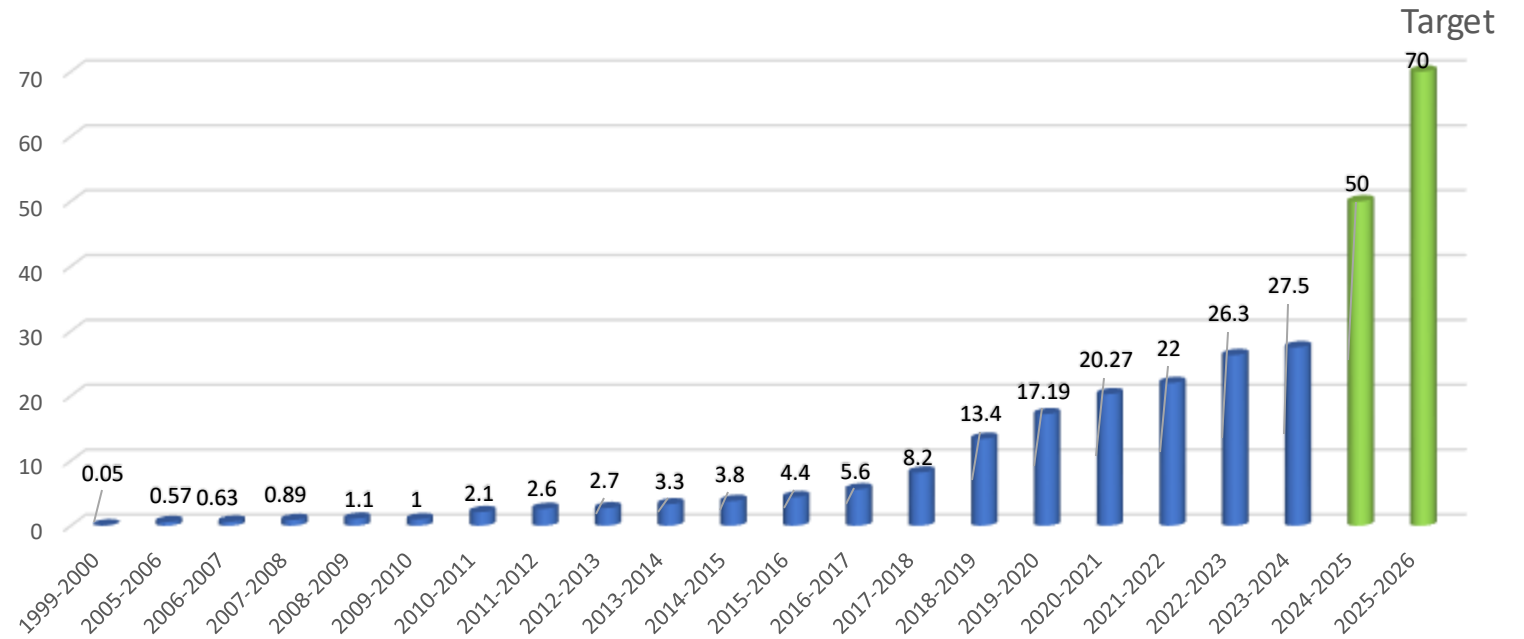


Business Growth

Sales Mix



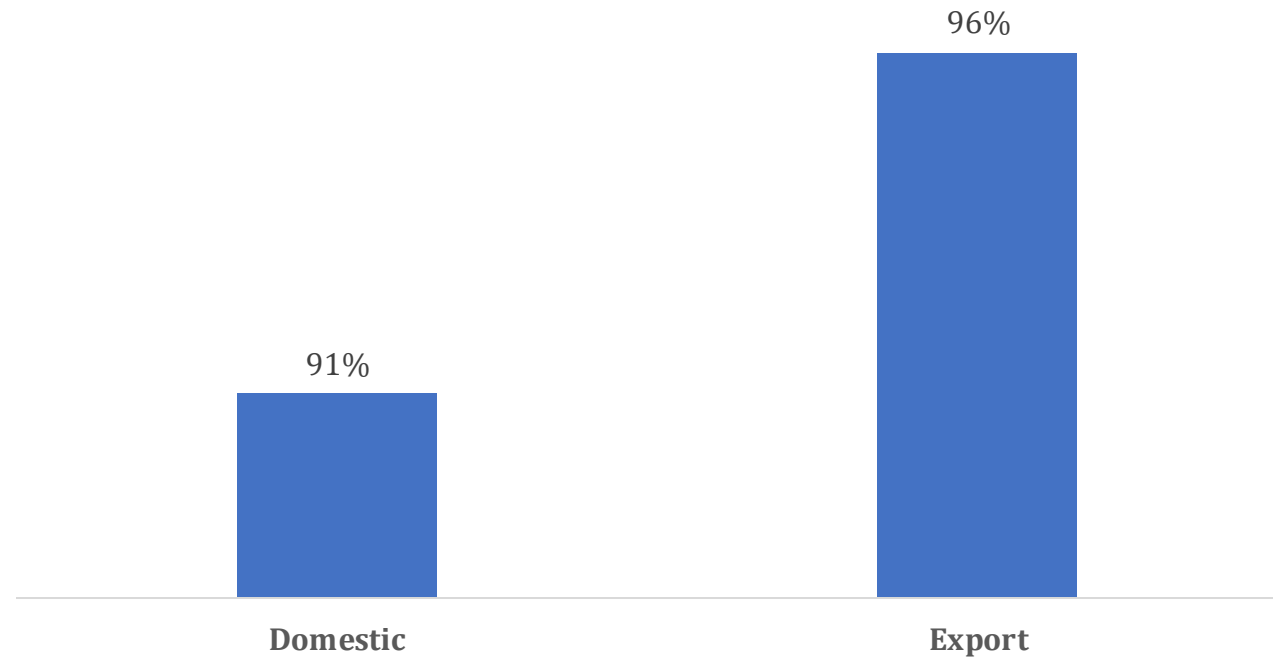
Turnover in Mn \$ Financial year April - March



Current spare Capacity is 30%

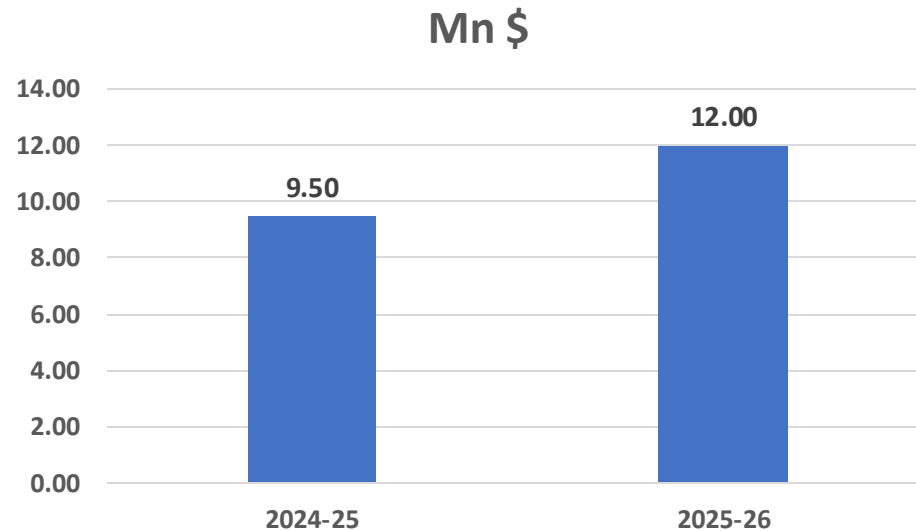
Key Metrics

2024-2025 OTD



Investment & Expansion Plan

Investment plan



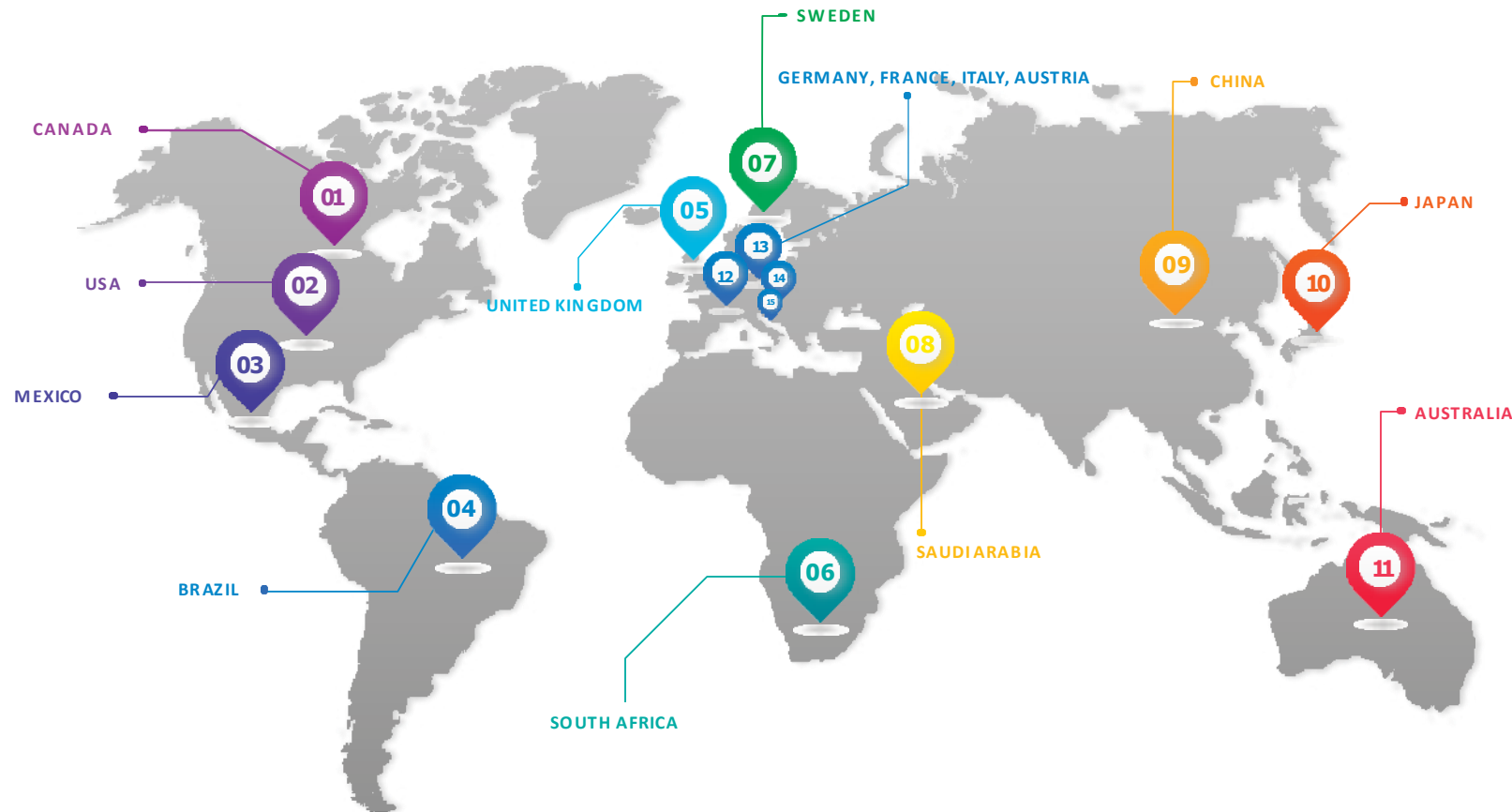
Expansion plan

- 4 Acre adjacent to Unit 1
- 5.2 Acre – Pochampalli Village, krishnagri Dist
- 2 Acre (88,000 Sqft) – **5 Km** from current location
- 34 Acre (14,00,000 Sqft) – **10 Km** from current location

- Multi Axis Machineries, Backward and Forward Integration.
- Forgings
- Surface Treatment

Global Business

Currently, we cater to around 18 nations around the globe. With on-time delivery and competitive pricing along with the ability to manufacture complex jobs, we are being preferred by many of our customers over our competitors.



Overseas Customers



T&D

xylem

Baker Hughes



Weatherford®

CATERPILLAR®



**VIKING
PUMP**
A Unit of IDEX Corporation

BOURGAULT

IDEX
CORPORATION

TRILLIUM
FLOW TECHNOLOGIES™

DOVER

TRELLEBORG

WCI
WORLD CLASS
INDUSTRIES

LAKE SIDE
METAL SPECIALTIES, INC.
MANUFACTURERS OF ENGINEERED OEM COMPONENTS

FLOWSERVE

IR Ingersoll Rand®

VELAN

SPXFLOW

SULTEX
VAMATEX
SOMET **ITEMA**
weaving in motion

INTEGRITY
IF YOU SEE IT, SAY IT ITT

Domestic Customers

CATERPILLAR®



Baker Hughes



xylem

SIEMENS
Ingenuity for life

IDEX®
INDIA

T&D

MAKINO

TOSHIBA
Leading Innovation >>>



CIRCOR

Perkins®

MARZOLI
Textile Engineering



VANDEWIELE
SAVIO



VELAN

FLOWSERVE

Brakes India Private Limited

pricol

DAKSHIN



LMW®

MEDHA

Accreditation

CERTIFICATE

The Certification Body
of TÜV SÜD South Asia Private Limited
certifies that

Rabwin Industries Private Limited – Unit I
SF No.138/2, SNMV College Road, Malumichampatti Post,
Coimbatore - 641 050, Tamilnadu, India
including the sites and scope of application see enclosure

has implemented Quality Management System
in accordance with **ISO 9001:2015**
for the scope of

**Manufacture and Supply of Machined Parts, Assemblies,
Gears & Gear Boxes for Pumps, Valves, Electrical,
Automotive, Earth Moving, Textile & Railway Industries**

The certificate is valid from **2025-02-24** until **2028-02-22**
Subject to successful completion of annual periodic audits

The present status of this certificate can be obtained through TÜV SÜD website by scanning below QR code and by
entering the certificate number (without spaces) on web page. Further clarifications regarding the status & scope of
this certificate may be obtained by consulting the certification body at info.in@tvsud.com

Certificate Registration No. **99 100 16682**

Date of Initial certification: **2016-02-23**

Issue Date: **2025-02-24** Rev. 00

Rahul Kale

Rahul Kale
Head of Certification Body
of TÜV SÜD South Asia Private Limited,
Mumbai
Member of TÜV SÜD Group
Page 1 of 2



TÜV SÜD South Asia Pvt. Ltd. • TÜV SÜD House • Sakinaka • Andheri (East) • Mumbai – 400072 • Maharashtra • India TÜV®

CERTIFICATE

The Certification Body
of TÜV SÜD South Asia Private Limited
certifies that

Rabwin Industries Private Limited
SF No.138/2, S.N.M.V College Road, Malumichampatti Post,
Coimbatore – 641 050, Tamil Nadu, India

has implemented Occupational Health and Safety Management System
in accordance with **ISO 45001:2018**
for the scope of

**Manufacture and Supply of Machined Parts, Assemblies, Gears &
Gear Boxes for Pumps, Valves, Electrical, Automotive,
Earth Moving, Textile and Railway Industries**

The certificate is valid from **2024-05-07** until **2027-05-06**
Subject to successful completion of annual periodic audits

The present status of this certificate can be obtained through TÜV SÜD website by scanning below QR code and by
entering the certificate number (without spaces) on web page. Further clarifications regarding the status & scope of
this certificate may be obtained by consulting the certification body at info.in@tvsud.com

Certificate Registration No. **99 117 00075**

Date of Initial certification: **2015-10-31**

Issue Date: **2024-02-29** Rev. 00

Rahul Kale

Rahul Kale
Head of Certification Body
of TÜV SÜD South Asia Private Limited,
Mumbai
Member of TÜV SÜD Group



TÜV SÜD South Asia Pvt. Ltd. • TÜV SÜD House • Sakinaka • Andheri (East) • Mumbai – 400072 • Maharashtra • India TÜV®

CERTIFICATE

The Certification Body
of TÜV SÜD South Asia Private Limited
certifies that

Rabwin Industries Private Limited – Unit I
SF No.138/2, SNMV College Road, Malumichampatti Post,
Coimbatore – 641 050, Tamilnadu, India

has implemented Environmental Management System
in accordance with **ISO 14001:2015**
for the scope of

**Manufacture and Supply of Machined Parts, Assemblies,
Gears & Gear Boxes for Pumps, Valves, Electrical,
Automotive, Earth Moving, Textile & Railway Industries**

The certificate is valid from **2025-04-04** until **2028-04-03**
Subject to successful completion of annual periodic audits

The present status of this certificate can be obtained through TÜV SÜD website by scanning below QR code and by
entering the certificate number (without spaces) on web page. Further clarifications regarding the status & scope of
this certificate may be obtained by consulting the certification body at info.in@tvsud.com

Certificate Registration No. **99 104 00398**

Date of Initial certification: **2016-10-12**

Issue Date: **2025-02-24** Rev. 00

Rahul Kale

Rahul Kale
Head of Certification Body
of TÜV SÜD South Asia Private Limited,
Mumbai
Member of TÜV SÜD Group



TÜV SÜD South Asia Pvt. Ltd. • TÜV SÜD House • Sakinaka • Andheri (East) • Mumbai – 400072 • Maharashtra • India TÜV®

ISO 9001 : 2015
22.02.2028

OHSMS 45001 : 2018
06.05.2027

ISO 14001 : 2015
03.04.2028

Accreditation

CERTIFICATE

The Certification Body of
TÜV SÜD AMERICA INC.

hereby certifies that

Rabwin Industries Private Limited
SF No.138/2, S.N.M.V College Road,
Malumichampatti Post,
Coimbatore, Tamilnadu 651050 India

Has Implemented Quality Management System in accordance with:

AS 9100D and ISO 9001:2015
(technically equivalent to prEN 9100 :2016 and JISQ 9100 – 2016)
The assessment was performed in accordance with the requirements of AS9100/1:2015-1. TÜV SÜD America Inc. is accredited under the International Aerospace Quality Group Industry Controlled Other Party Management System

The scope of this Quality Management System includes:

**Manufacturing of Metal Components
for the Aerospace Industries**

Certificate Expiry Date: June 9, 2025
Certificate Registration No: 951 22 5511
Issue Date: June 10, 2022
Reissue Date: N/A

Greg Bates
Director Business Assurance America

TÜV SÜD America Inc • 401 Edgewater Place, Suite 500 • Wakefield, MA 01880 USA • www.TUVSUD.com
The validity of this certificate is contingent on the company maintaining its management system to the requirements of the indicated standard and is subject to regular monitoring by TÜV SÜD America.

TUV

AS 9100 : 2015
09.06.2025

CERTIFICATE

The Certification Body
of **TÜV SÜD Management Service GmbH**
certifies that

Rabwin Industries Private Limited
SF No.138/2, S.N.M.V College Road, Malumichampatti Post,
Coimbatore, Tamil Nadu - 641050
India

has established and applies
a Quality Management System for

Machining of Metal Components
(without Product Design as per Chapter 8.3).

An audit was performed and has furnished proof
that the requirements according to

IATF 16949
First Edition 2016-10-01

are fulfilled.
Issue date: **2022-12-02**
Expiry date: **2025-12-01**
Certificate Registration No.: **12 111 59182 TMS**
IATF Certificate No.: **0463389** / IATF USI: **G2TYG9**


Head of Certification Body
Munich, 2022-12-02
Page 1 of 1

TÜV SÜD Management Service GmbH • Zertifizierungsstelle • Ridlerstrasse 57 • 80339 München • Germany
www.tuev-sued.de/certificate-validity-check

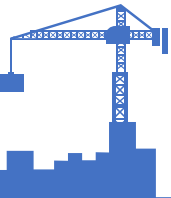
TUV

IATF 16949 : 2016
01.12.2025

Machines and Equipment

Total Machines: 320+ Machines

Machines	No of Machines	Maximum capacity - mm
5 Axis	9	X 1800, Y 2000, Z 1100, C 360°, B 110°
HMC	47	2100 X 1800 X 1580
VMC	51	3050 x 700 x 700
TURNING CENTRES	55	Dia 400 x 1250
TURNMILL	30	Dia 650 x 5000
VTL	12	Dia 1000 , length 750
VTM	5	Dia 5500 x 2000
V.HOBGING	2	Dia 450 X 300
H.HOBGING	3	Dia 250 x 1000
Wire Cutting	3	0.25 mm wire Dia
GRINDING	4	Dia 350 X 1000
BALANCING	2	Max Dia 400
BROACHING	2	6,9 tonnes
Conventional	75	Milling, Turning, Broaching, Grinding, Drilling, Hydraulic press etc
Honing	3	Dia 450 x 4000



Machines Suitable for Heavy Parts Machining

**VERTICAL BORING & TURNING MILLING CENTRE
SHIBAURA TSS 30/50C (S) - 1No.**



Table Diameter	3000 mm
Maximum Swing	5500 mm
Maximum Cutting Swing	2600 mm
Horizontal travel of rail head (X-Axis)	2150 mm
Vertical travel of Ram (Z-Axis)	1500 mm
Vertical travel of Arm	2000 mm
Maximum loading capacity	20000 kg

**HORIZONTAL BORING MACHINE
SHIBAURA BTH -150. R24- 1No.**



X-Axis Travel	4000 mm
Y-Axis Travel	3000 mm
Z-Axis Travel	2200 mm
W-Axis Travel	700 mm
Maximum loading capacity	25000 kg
Minimum table indexing angle	0.001 °

Machines Suitable for Heavy Parts Machining

DOOSAN PUMA 600 XLY II TURN MILL CENTRE -2 Nos.



Max. Turning Diameter	750 mm
Max. Turning Length	5050 mm
X-Axis Travel Distance	400 mm
Y-Axis Travel Distance	200 mm
Z-Axis Travel Distance	5100 mm

WNC 500 S / 1.6 MT MILL TURN - 1 No.



Turning length	1000 mm
Turning Diameter	540 mm
Spindle diameter	77 mm
Feed Rate	Up to 5000 mm/min
Spindle Speed Range	25 - 4000 rpm

Machines Suitable for Heavy Parts Machining

WFL M60 MILL TURN – 1 No.



Max. Turning Diameter	690 mm
Travel X - axis	720 mm
Travel X - axis	300 mm
Swing	690 mm
Max. spindle speed	6000 min-1

HEYNUMAT 35 FLEX MILL TURN – 1 No.



Spindle bore	122 mm
Centre distance	4000 mm
Max swing over bed	890 mm
Max swing over cross slide	820 mm

Machines Suitable for Heavy Parts Machining

BOEHRINGER VDF 25 M – 1 No.



SPECIFICATION

Chuck Size	400.05 mm
Bar Capacity	77.978 mm
Swing	698.5 mm
Machining Length	749.3 mm
Turning Dia	444.5 mm

Machine Gallery



HMC



VMC



CNC Turnmill



5 AXIS



WIRE CUTTING



High Pressure Hot
Washing



5 stage Ultra Sonic
Cleaning

WELDING

CNC MIG welding

Make : Fronius – synergic 5000

CNC TIG welding

Make : EWAC

Fixture capabilities

We also undertake all type of

- Mechanical & Hydraulic fixture works



Expertise In Various Material

- Stainless Steel: All Grades – Bar stock, Casting, Forging, Investment Casting
- Carbon Steel: All Grades - Bar stock, Casting, Forging, Investment Casting
- Cast Iron Casting, SG Iron Casting, Investment Casting, Forging
- Copper: OFHC, ETP, Copper-Nickel - Bar stock, Casting, Forging, Investment Casting
- Aluminium Extrusion: 2024, 5083, 6061, 6063, 6082, 6101B, 7075 – (Port hole & Seamless)
- Aluminium Castings : ADC12, LM6, LM25, LM4, AlSi10mg, A319, SCM 14 (HPDC & GDC)

Exotic Steel: Bar Stocks & Forgings:-

- | | |
|-------------|---------------|
| • Alloy 20 | • Stellite #6 |
| • Hastelloy | • Titanium |
| • Duplex | • Grade 660 |
| • Monel | • Ferralium |
| • Inconel | • SCM420V |
| • M4 | • D2 |

Special Process – Outsourced

Surface Treatment

- Silver Plating
- Zinc Plating
- Chrome Plating
- Anodizing
- Powder Coating
- CED Coating
- Phosphating
- Stellite 6 overlay
- Teflon Coating
- Thermal Zinc
- High velocity Oxygen Fuel HVOF
- Babbitt Coating
- Ceramic Coating
- ENP
- Plasma Coating
- Wire flame Coating

Heat Treatment

- Carburizing
- Case Hardening
- Quench & Tempering
- Induction Hardening
- Carbo-nitriding
- Nitriding

Inspection Facilities



CMM – I
Hexagon
1500 x 3000 x 1000

CMM – II
Accurate
600 x 700 x 500

CMM – III
Zeiss
1000 x 1600 x 600

CMM – IV
Hexagon
600 x 1000 x 800

CMM – V
Hexagon
1000 x 1200 x 800

CMM – VI
Accurate - 5 Axis Revo probe
1500 x 3000 x 1000

CMM – VII
Accurate - Spectra
800 x 1000 x 600

Inspection Facilities

HEXAGON DELTA SLANT PERFORMANCE 30.80.25 CNC CMM –1 No.



SPECIFICATION

Measuring stroke (mm) X	3000
Measuring stroke (mm) Y	8000
Measuring stroke (mm) Z	2500
Resolution	0.1 microns
Maximum part weight (With standard foundation design)	24000 kg for (30.80.25)

Inspection Facilities



**VICKERS HARDNESS
TESTER**



Gear roll Tester



PMI Tester



**Profile Projector
(Optical Comparator)**



Ultrasonic Tester



Magnetic Particle Inspection



**Particle Count & Image
Analyzer – CARL ZEISS**



Conductivity Testing



Millipore Tester



Surface Analyzer



Wall thickness gauge

Software

CAD/CAM



ERP



Power backup facility

Genset

1600 KVA

UPS

1200 KVA



SUSTAINABLE ENERGY

SOLAR ENERGY: 700 KW of Rooftop solar system Installed.



Environmental Benefits

obtained since 2021-08-24



The greenhouse gases that **574.72** passenger cars emit over 1 year



The energy to power **11,322.83** computers for 1 year



The energy to operate a TV for **10,230,177.54** hours

Greenhouse Gases Avoided

by use of renewable energy

CO ₂	Carbon Dioxide	2,606,888.69	kg
NO _x	Nitrogen Oxide	1,279.14	kg
SO ₂	Sulfur Dioxide	75.38	kg



Pump Parts

Gear family



Casing family



Iron Rotor



Casing



Head valve



Mounting Bracket family



Casing family



Plunger family



Switch Gears Parts

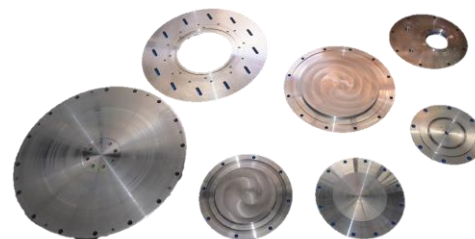
Shaft family



Gear family



Big Plate family



Tube family



Mechanism parts family



Contact parts family



Cylinder family



Corona family



Lever family



Valve Parts

Plug family



Seat Ring family



36K Plug



Liners



Piston Assembly



Cryo Bonnet



Lever family



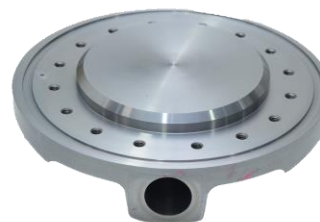
41K cage



10K/80K Plug



Disk



21K Plug



Split Clamp



Valve Body



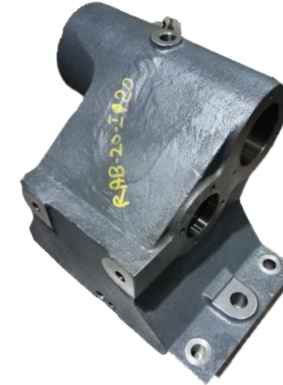
**Diesel Engine
Gear Case - Front**



**Diesel Engine
Flywheel Housing - Rear**



Tail Stock



Anchor Brake



Rail & Leg



Bearing cover



Gear Case



**Windmill
Planet Shaft**



Carrier Assembly



Heavy Engineering – Railway Family

Gear Box assembly



Canon Tube



Housing



Centre Pivot



Bearing Shield



Different types of Axle Box



Automotive Parts

Secondary Fly Wheel



End Plate



Volvo Exhaust Manifold



Shutter Housing



FSA Bracket



Aux Cylinder



Support Arm



Exhaust Pipe



Complex Automotive Parts

VOLVO parts – through BIF

Cab Anchorage



FSA



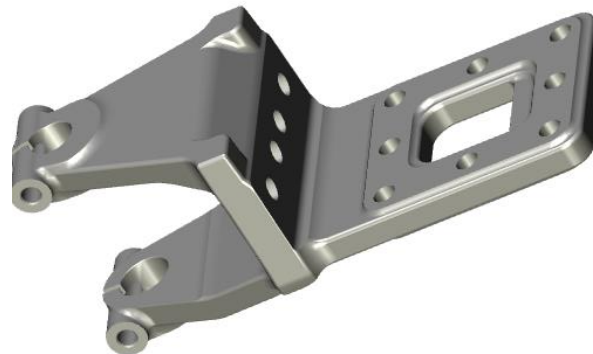
FLANGE



Saddle Bracket



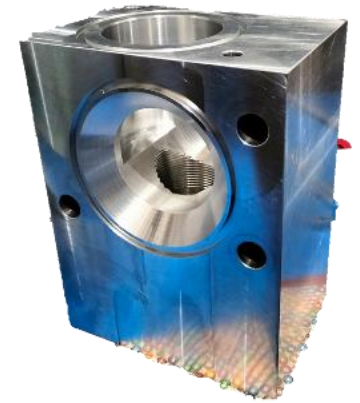
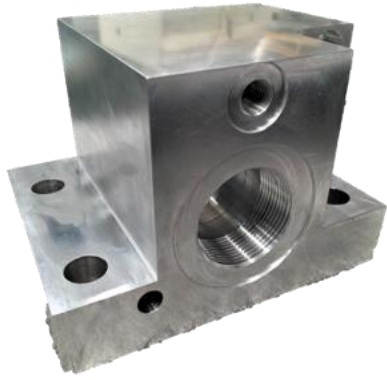
FSA LH & RH



Bracket Battery Box



Manifolds for Hydraulic system



Gears Parts

Shaft family



Gear family



Lever family



Mechanism parts family



Gear family



Lever family



Shaft family



Oil Field Service Parts

Mechanical Ball valve



Piston



Mandrel



Cover Sleeve



Parts - Transmission

Sprocket



Power Project



Crown Gear



Profile Ground Gear



Automobile

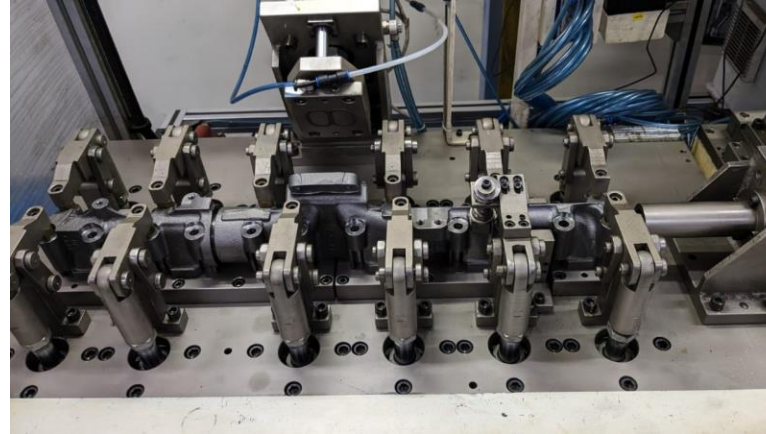


Gears :

- Spur
- Helical
- Taper
- Crown
- Worm
- Worm Wheel
- CNC hobbing,
Shaved/Ground gears
- Splined Shafts



Assembly Line



Specific Features

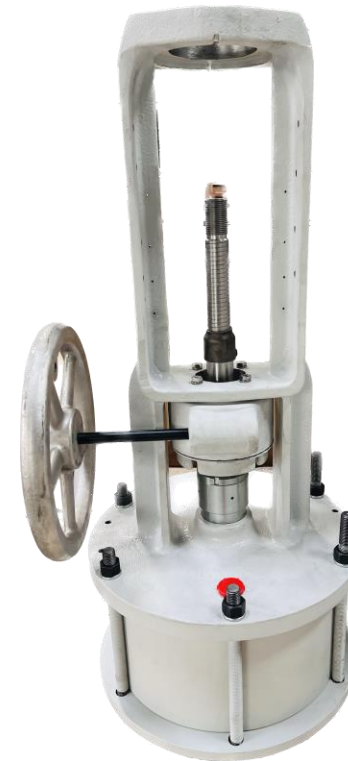
- Bio Metric for all Operation/Setting selection
- DMC code reading for online recording
- Adopter tightening with Bosch/Rexroth Electronic torque controller with Online recording
- Front & Rear assembly with LVDT for length control
- Leak testing with ATEQ detector with Online recording
- Poka Yoke interlock through DMC- If previous operation not OK subsequent Operation will not run
- Final packing with DMC reader – Online data for packing list

Sub-Assemblies

Control Rod – Fuel



Long Stroke Actuator - LSA



Sheet Metal Fabrication

150 TON HYDRAULIC PRESS – 1 No.



- Bed size -600 x 600 mm
- Pressing capacity – 150 tons
- Day light -800 mm
- Cushioning capacity -50 tons
- Cylinder stroke length-500 mm

100 TON POWER PRESS – 2 Nos.



- Bed size -600 x 1000 mm
- Pressing capacity – 100 tons
- Day light -500 mm
- stroke length-100 mm

Sheet Metal Fabrication

LASER CUTTING – 1 No.



- Bed size -4000 x 2000 mm
- Laser power – 5000 watts
- Working height -100 mm
- Max. axis acceleration: 16 m/s²
- Max. sheet thickness
 - ✓ Construction steel: 25 mm
 - ✓ Stainless steel: 20 mm
 - ✓ Aluminium: 12 mm

MIG & TIG WELDING



Sheet Metal Fabrication - parts

REGISTER CUP



FLOAT



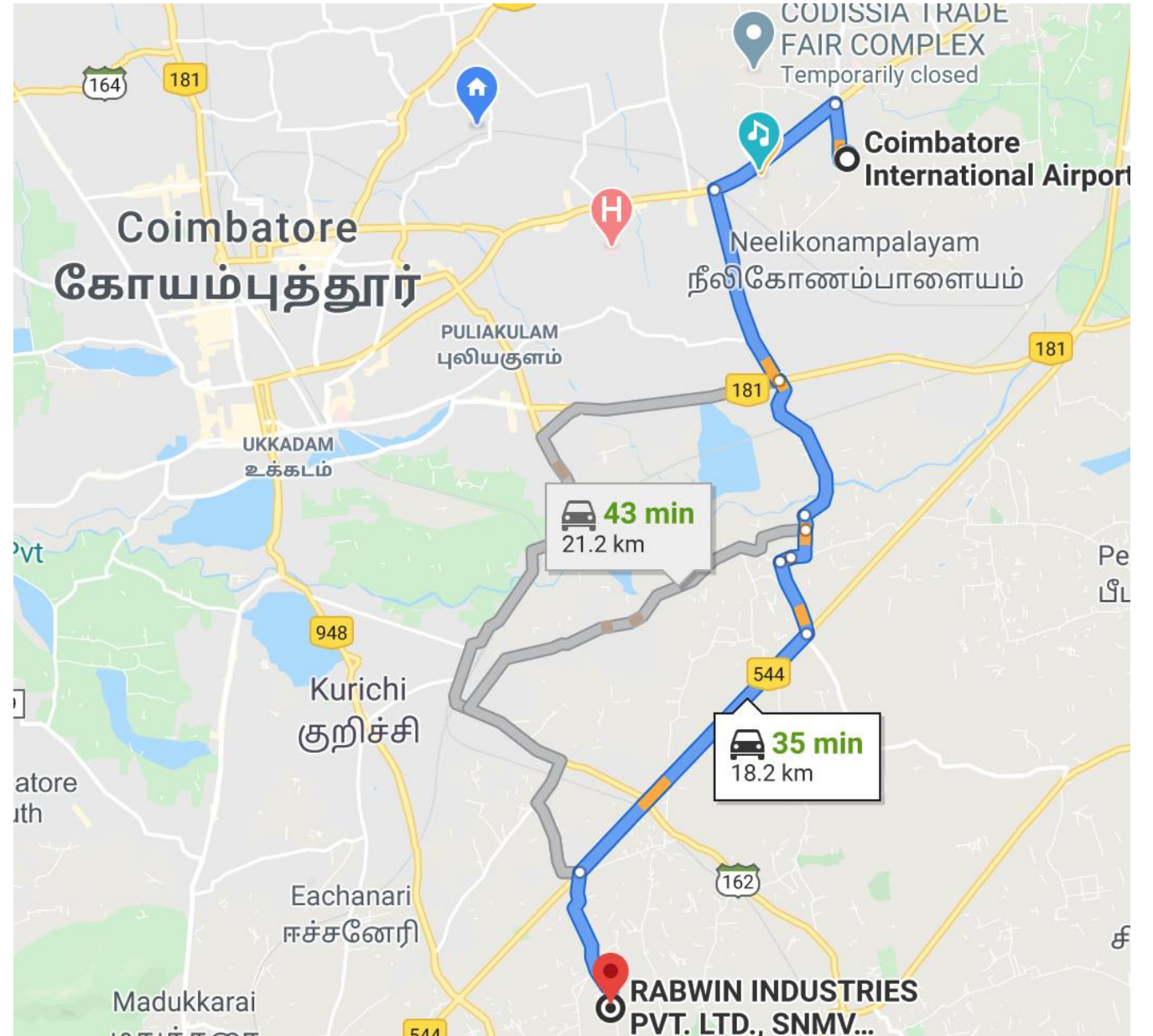
ALLY REGISTER CUP



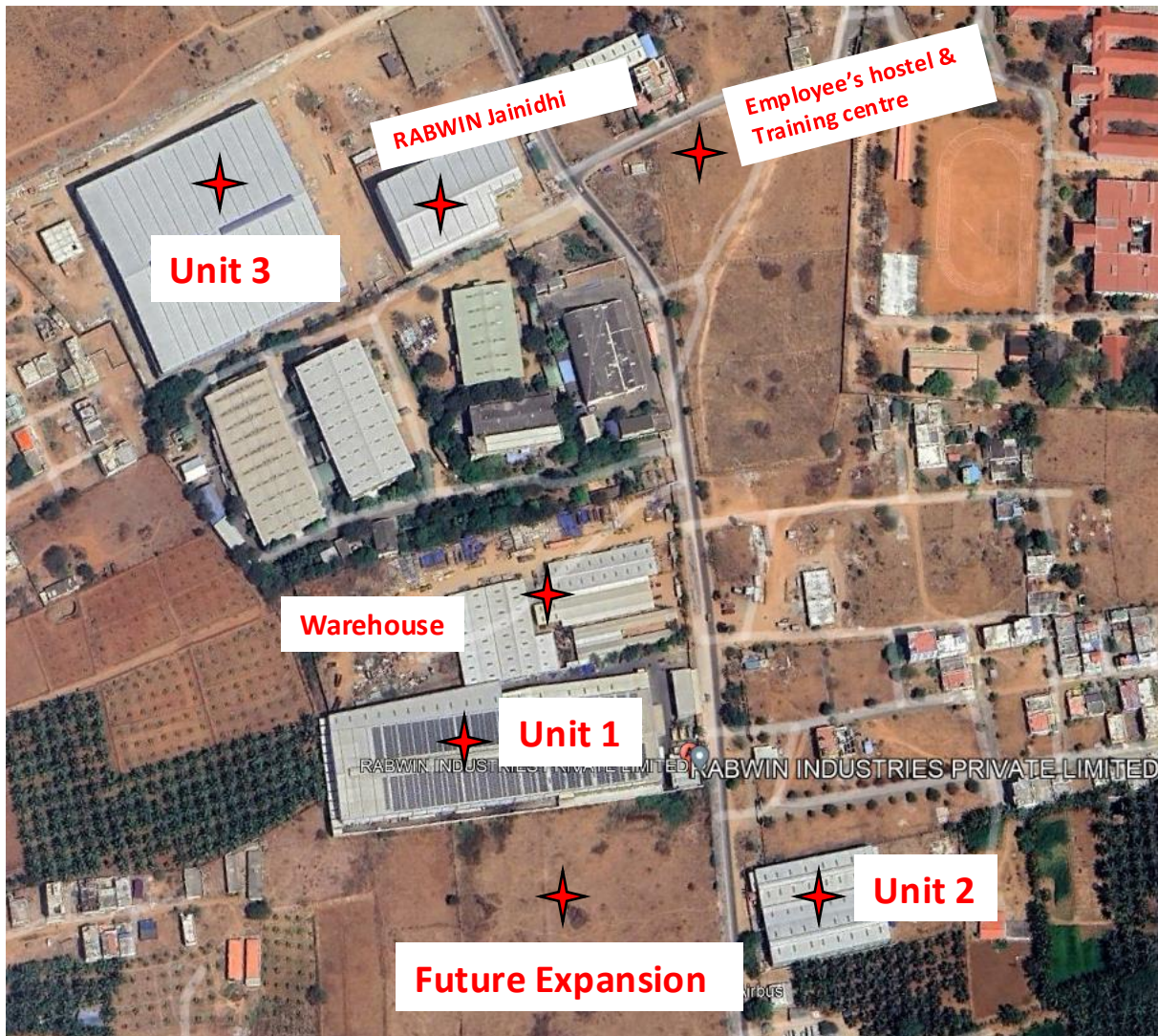
Route-map

From Coimbatore international Airport CJB
to Rabwin

Distance : 20Km
**Travelling Time :
40mins**



Aerial view



Unit 1 to Foundry
Distance : 21.6 km
Travel : 24 min

THANK YOU

RABWIN Industries Private Limited



SF.No138/2, SNMV College Road,
Malumichampatti, Coimbatore,
Tamil Nadu, India - 641050



+91 93420 92785



www.rabwin.com



info@rabwin.in
b.dharun@rabwin.in