



Cold chain intelligence

A young company with a mission

Etheclo strives for a more sustainable and circular economy. That is why we developed the etheclobox: it allows the combination of different temperature sensitive shipments **without refrigerated vans**, it can be monitored in real time and is entirely recyclable.

www.etheclo.com  



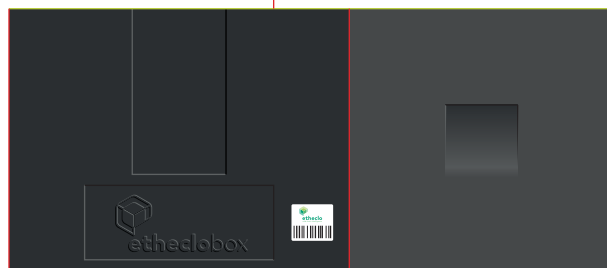
Marnix Van Bockhaven
Operations
& ICT

+32 479 97 70 31
marnix@etheclo.com



Jos Miermans
Sales & Business
Development

+32 495 55 17 35
jos@etheclo.com

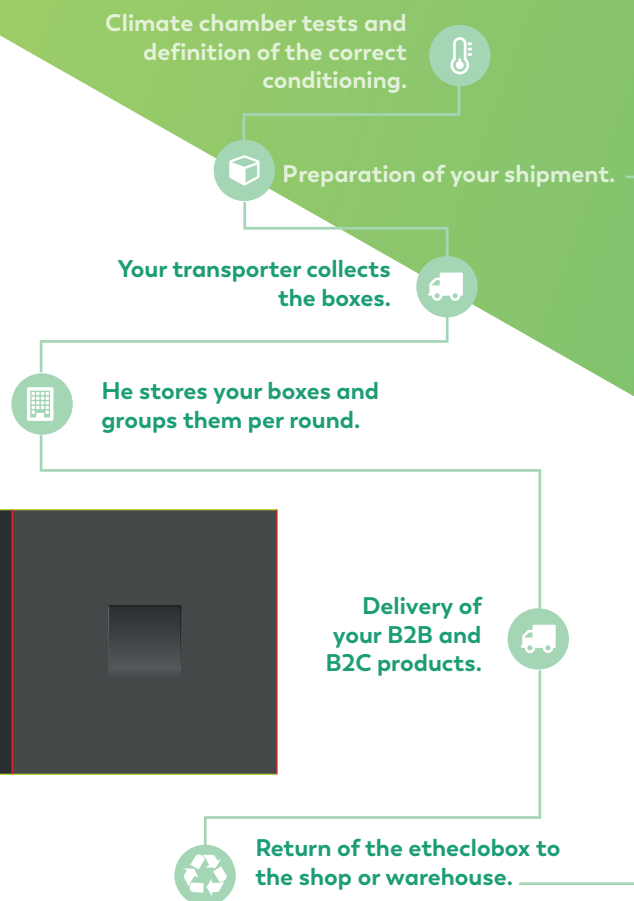


Flexible logistics

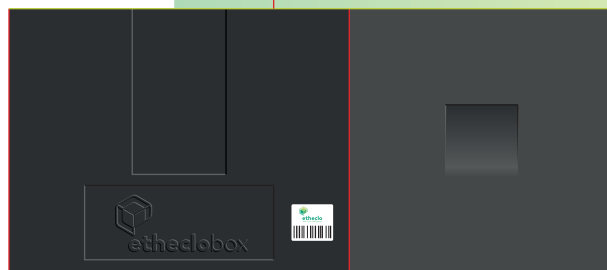
The etheclo concept guarantees an optimal efficiency and minimal impact on the environment and mobility.

Safety and temperature guarantee of your shipments are key for Etheclo.

Start thinking in and around the box!



Cold chain intelligence
for companies shipping
temperature sensitive goods



Our box has been thoroughly tested and preserves the temperature of your goods in all climate conditions.

The etheclobox

Made of EPP, up to **250 times** re-usable without quality loss. At the end of life **reprocessed** into new boxes.

Sensor

Transmits the temperatures to **etheclomonitor**, our **cloud platform**, where you will find an overview of your temperatures and detailed graphs.

Unique
GS1-code

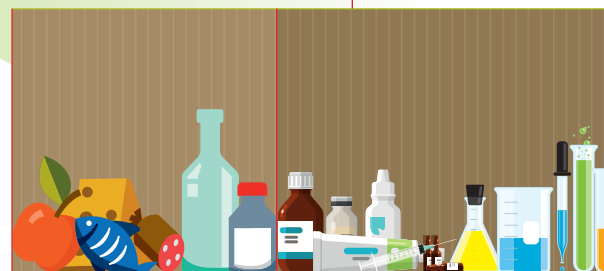


Cooling plates

Plates, hard frozen.

Inner packaging

We can offer you a custom made **inner cardboard box** which fits ideally in our etheclobox.



Coldbox for temperature sensitive products such as food, meals, healthcare products....

The etheclobox as a link in your logistics?

The etheclobox and etheclomonitor can be used in each logistic trip. They are already used in the **short chain** and by **food** distributors and are appreciated by **healthcare** and **pharmaceutical players**. Also smart cities and **event organizers** approve this green and flexible solution.

www.etheclo.com  



Climate chamber tests



Temperature guarantee for 36 hours



Efficient logistics



Intelligent monitoring



Custom formulas



Green and entirely recyclable

The etheclobox is our solution towards a better efficiency with a minimal impact on the environment and the mobility.

You will be able to use the same etheclobox for **2 to 3 years** before it will be **reprocessed** into a **new box**.

Since you will need less refrigerated vehicles, you will be able to **reduce your fuel costs**.

