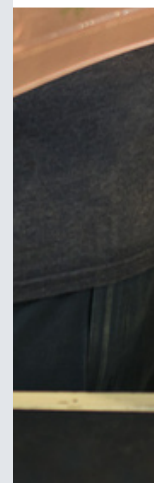
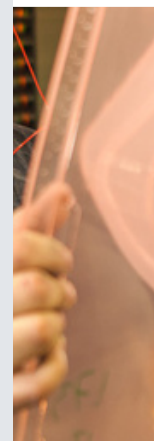
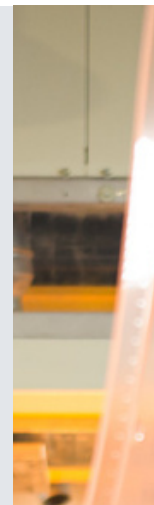
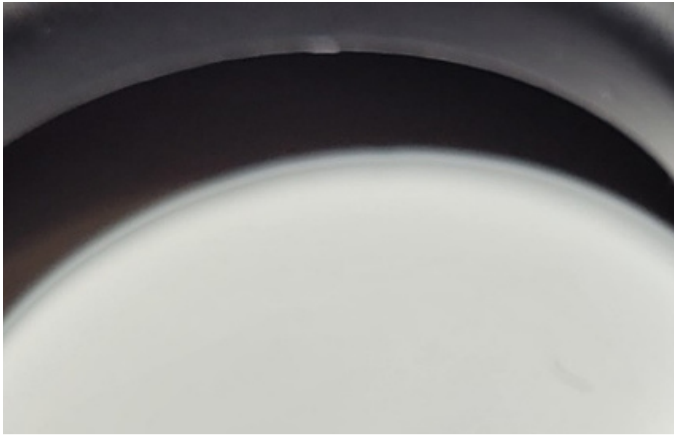




Our job, shape your project





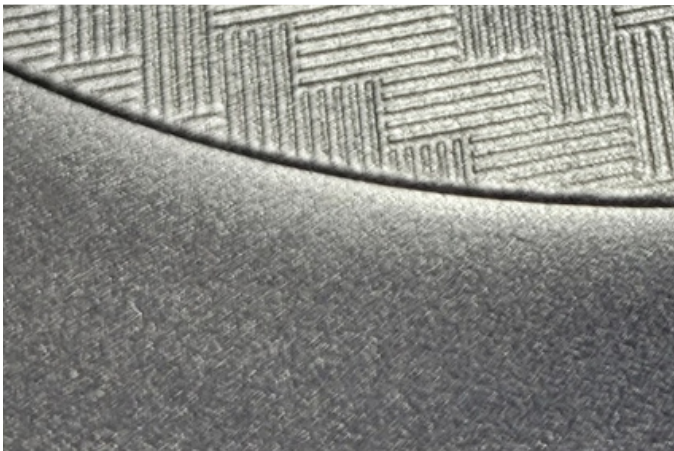
VACUUM FORMING

.....

Thermoforming is a technique that involves taking a polymer sheet, heating it to soften it, and taking advantage of this ductility to shape it with a vacuum mold. The material hardens again as it cools, retaining its shape. Our molding capacities: 2800x1600x800 mm, positive or negative, over 1 mm thick, all types of thermoplastics: ABS, PS, PC, PMMA, ASA, PETG, PE, PP, PVC, virgin or recycled.



THERMOFORMING

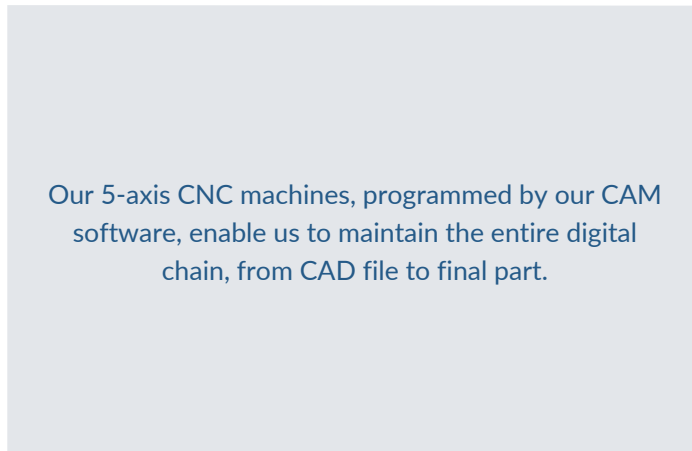
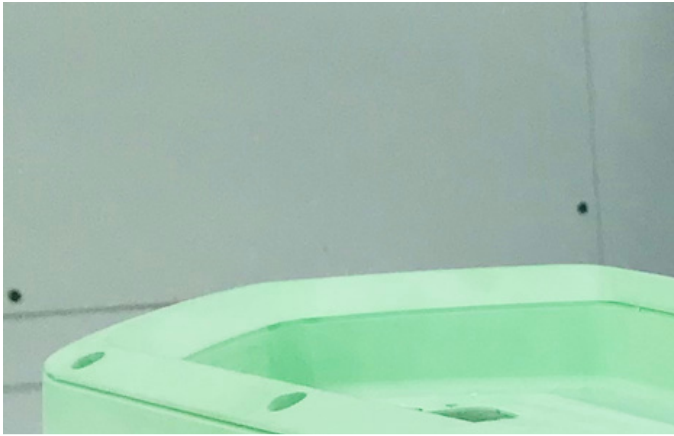


PRESSURE FORMING

.....

This process is similar to vacuum thermoforming, except that the shape and appearance of the part are obtained by bringing the mold into contact with the material, on which pressure is exerted by means of a sealed bell.

Our molding capacity: 20 T
We process all types of thermoplastics over 1 mm thick: ABS, PS, PC, PMMA, ASA, PETG, PE, PP, PVC, both virgin and recycled.





ASSEMBLING

COMPLEX & SPECIFIC ASSEMBLIES

.....



All our plants are equipped with assembly lines that enable us to produce sub-assemblies by gluing, mechanical assembly and ultrasonic welding, in order to deliver complete sub-assemblies to our customers.