

An architectural rendering of a modern floating structure. The central focus is a circular, two-story building with a light-colored wooden facade and large glass windows. It sits on a small, landscaped island in the middle of a body of water. To the left, a larger, multi-story building with a dark frame and glass walls is partially visible. The water reflects the buildings and the sky. In the background, there's a pier and some distant land. The sky is blue with a few birds flying. The overall scene is bright and clear, suggesting a sunny day.

**STRUCTURE**LAB

**FLOATING** STRUCTURES



**STRUCTURELAB**

At StructureLab Architects, we embody visionary, sustainable, and forward-thinking architecture. Since 2002, we've combined structured, methodical planning with the creative freedom of a laboratory to craft bespoke solutions tailored to every project. Our name reflects this philosophy: STRUCTURE for intelligent systems and clear concepts; LAB for experimental thinking and a boldness to explore new paths. From our studio in Düsseldorf's dynamic Media Harbor, a diverse team of around 20 professionals works on projects that aim to create lasting, transformative impact. We believe in an interdisciplinary approach that seamlessly blends design, technology, and environmental consciousness—shaping spaces with purpose.

**FLOATING STRUCTURES | "Connecting people through water"**

Our floating structures unite advanced architectural design, modular construction, and a strategic response to climate adaptation and land scarcity. Developed with a focus on spatial quality and user well-being, they provide sustainable frameworks for housing, hospitality, and mixed-use programs. Beyond their core functions, they are conceived as inclusive social catalysts—enabling cultural exchange, public interaction, and resilient community networks. By activating underused waterfronts, the systems contribute to the ecological and socio-economic resilience of cities. Engineered to the highest sustainability standards and adaptable to diverse contexts, they offer globally transferable solutions for human-centered urban environments on water.

At StructureLab Architects, we believe that architecture isn't just about shaping spaces—it's about shaping the future.

**STRUCTURELAB Architects**

Speditionstrasse 15 40221 Düsseldorf Tel. 0211-310626-0 [www.structurelab.com](http://www.structurelab.com) [contact@structurelab.com](mailto:contact@structurelab.com)

**CONNECTING PEOPLE THROUGH WATER**





# TEAM

Jürgen Schubert | Alexander Prang





Inspired  
by Nature



Building  
with Wood



Modular & Flexible  
& Multipliable



Affordable  
& Adaptable



Social Return  
& Engagement



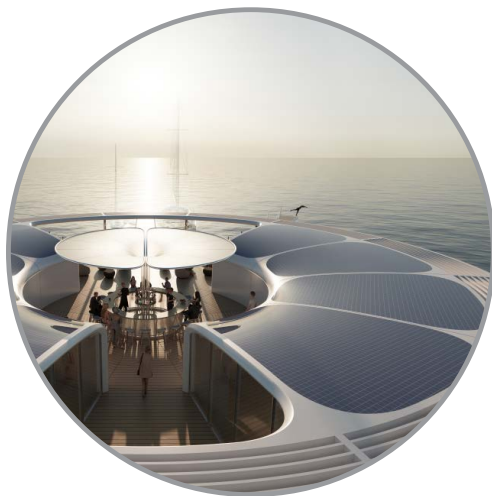
Innovative & Versatile  
Options



Timeless & Durable  
Design



Efficient & Light  
Structure



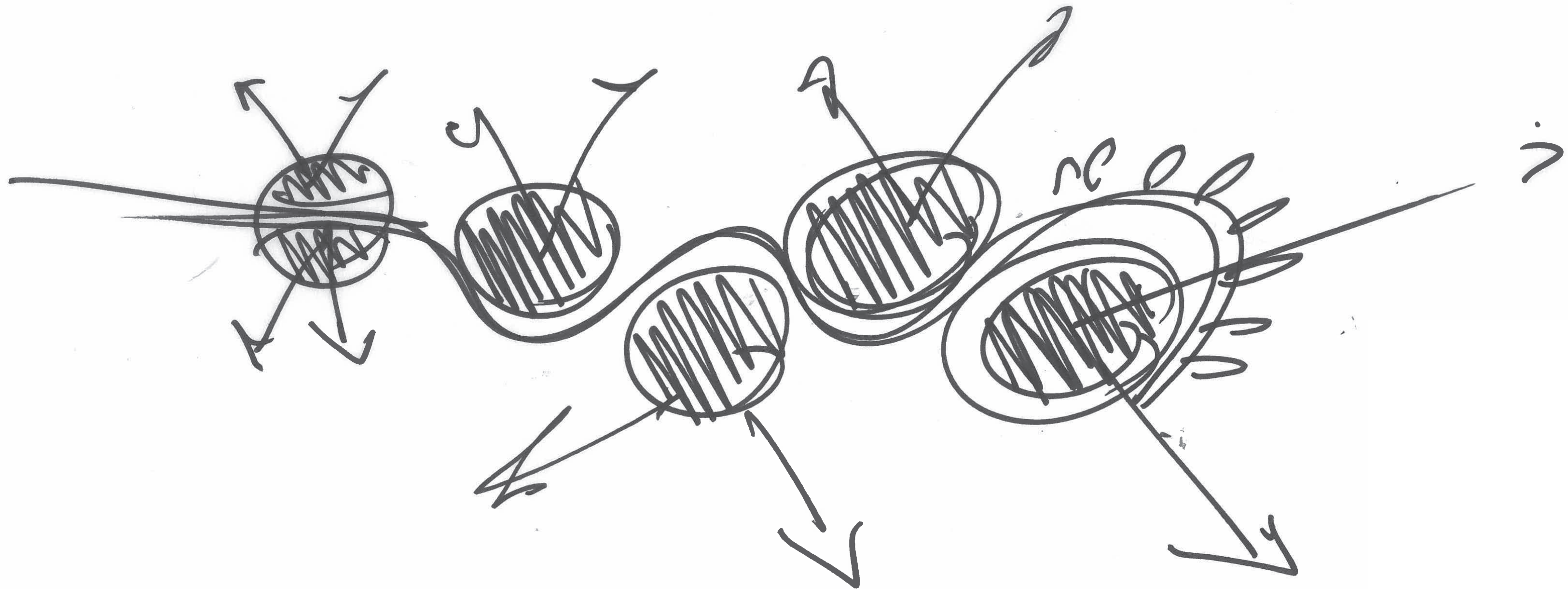
Renewable Energy  
& Nature-based Solutions



Water & Nature  
Experience

VALUES





# PROJECT 01

Dubai Waterfront \_ Design Study

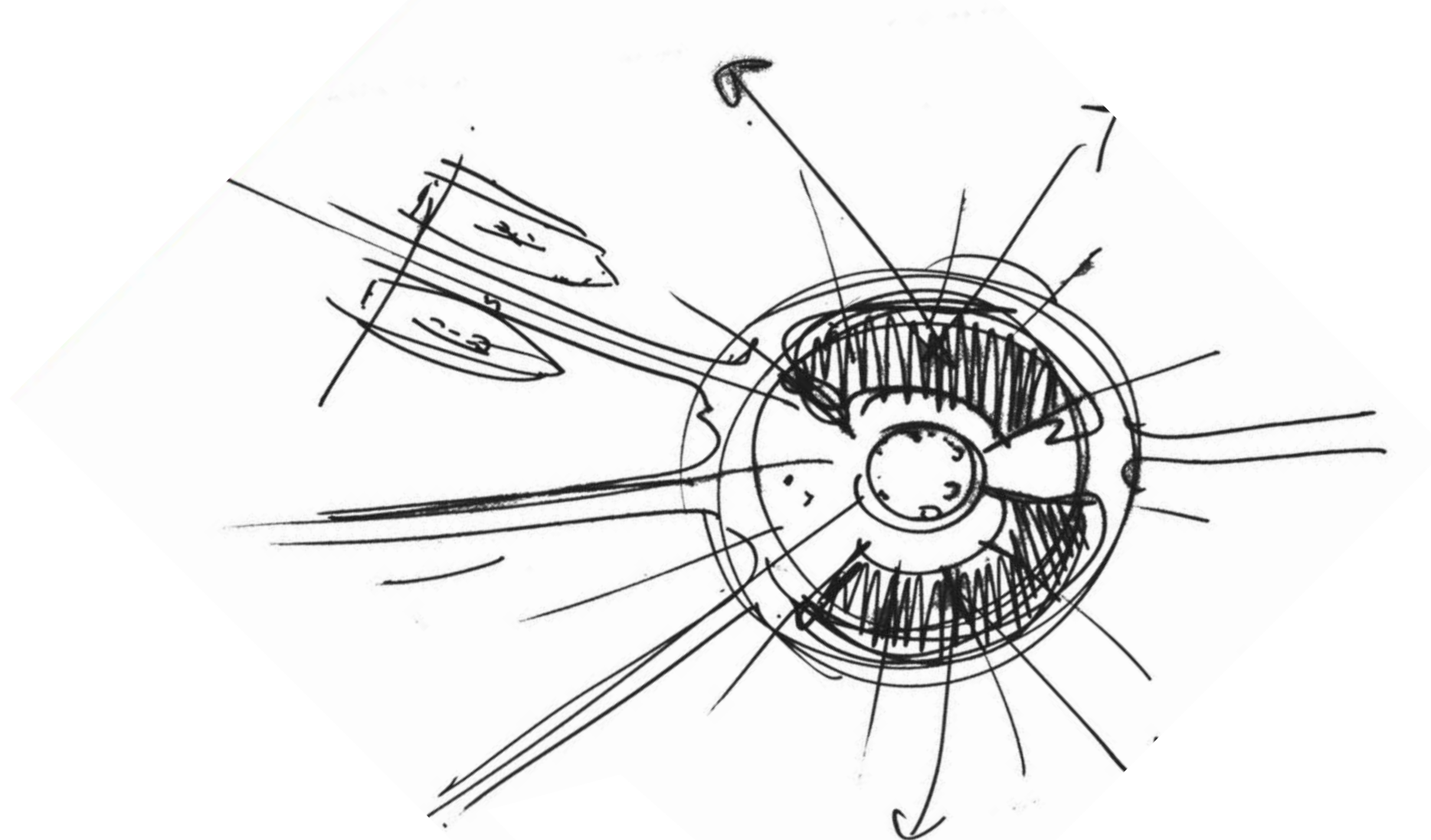








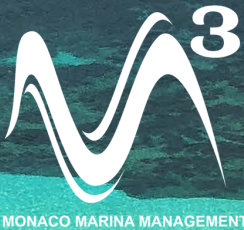




## **PROJECT 02**

LOTUS MARINA \_ Monaco Smart & Sustainable Marina, International Competition 1. Price





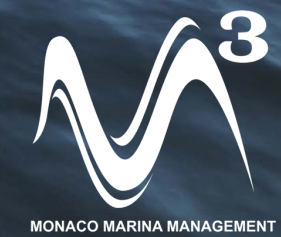
LOTUS MARINA \_ Monaco Smart & Sustainable Marina, International Competition 1. Price





LOTUS MARINA \_ Monaco Smart & Sustainable Marina, International Competition 1. Price



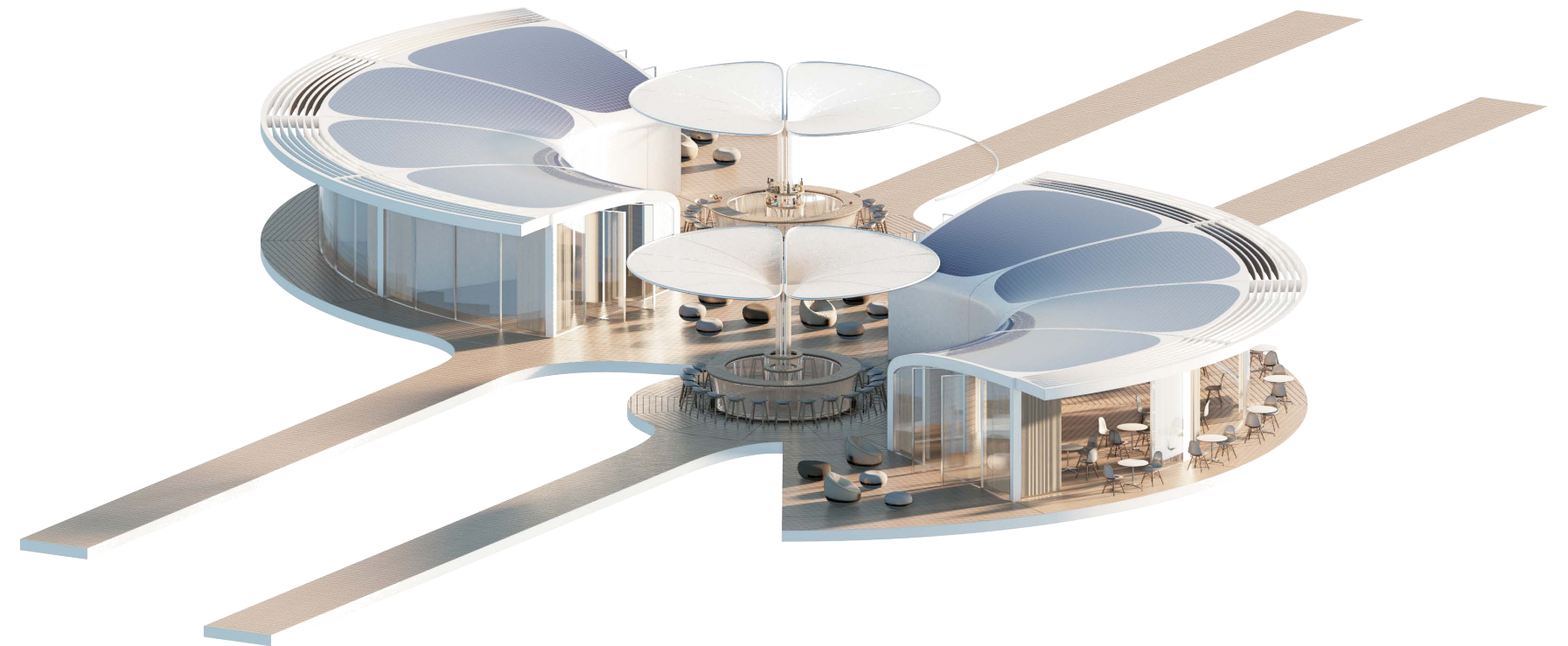
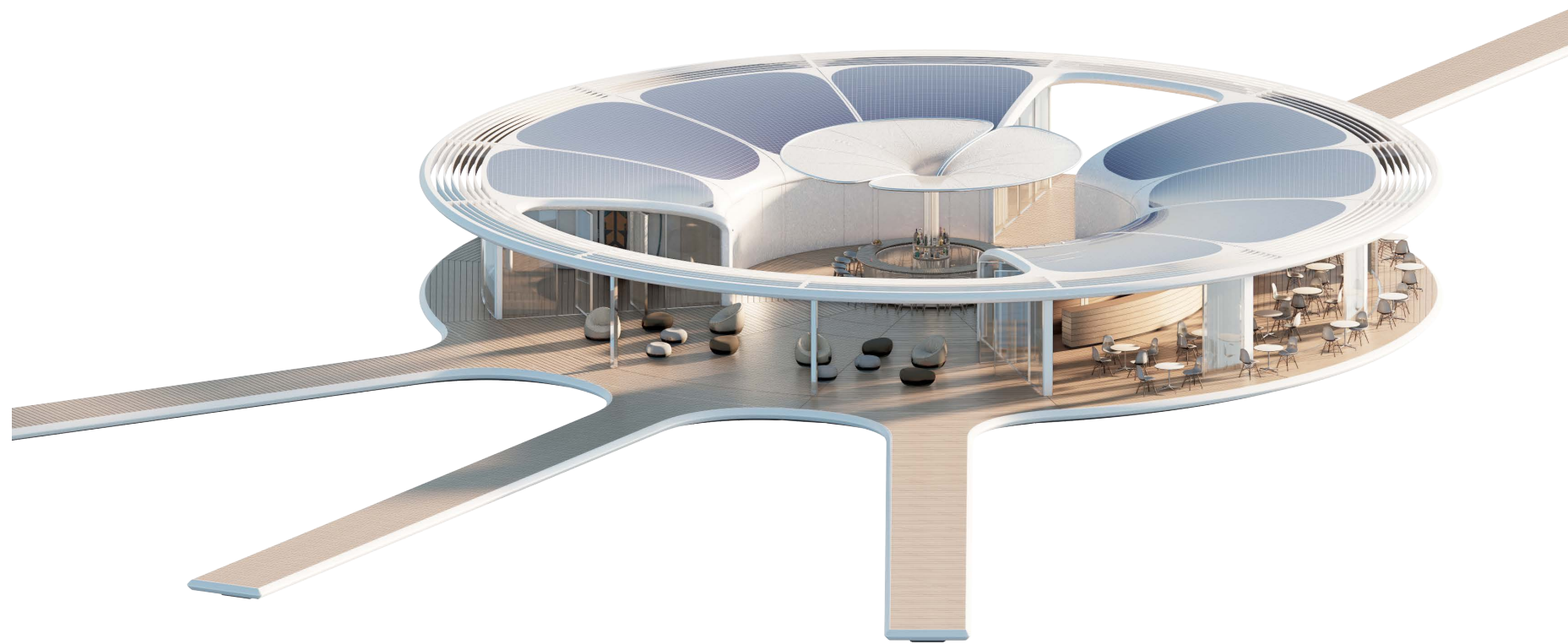


LOTUS MARINA \_ Monaco Smart & Sustainable Marina, International Competition 1. Price



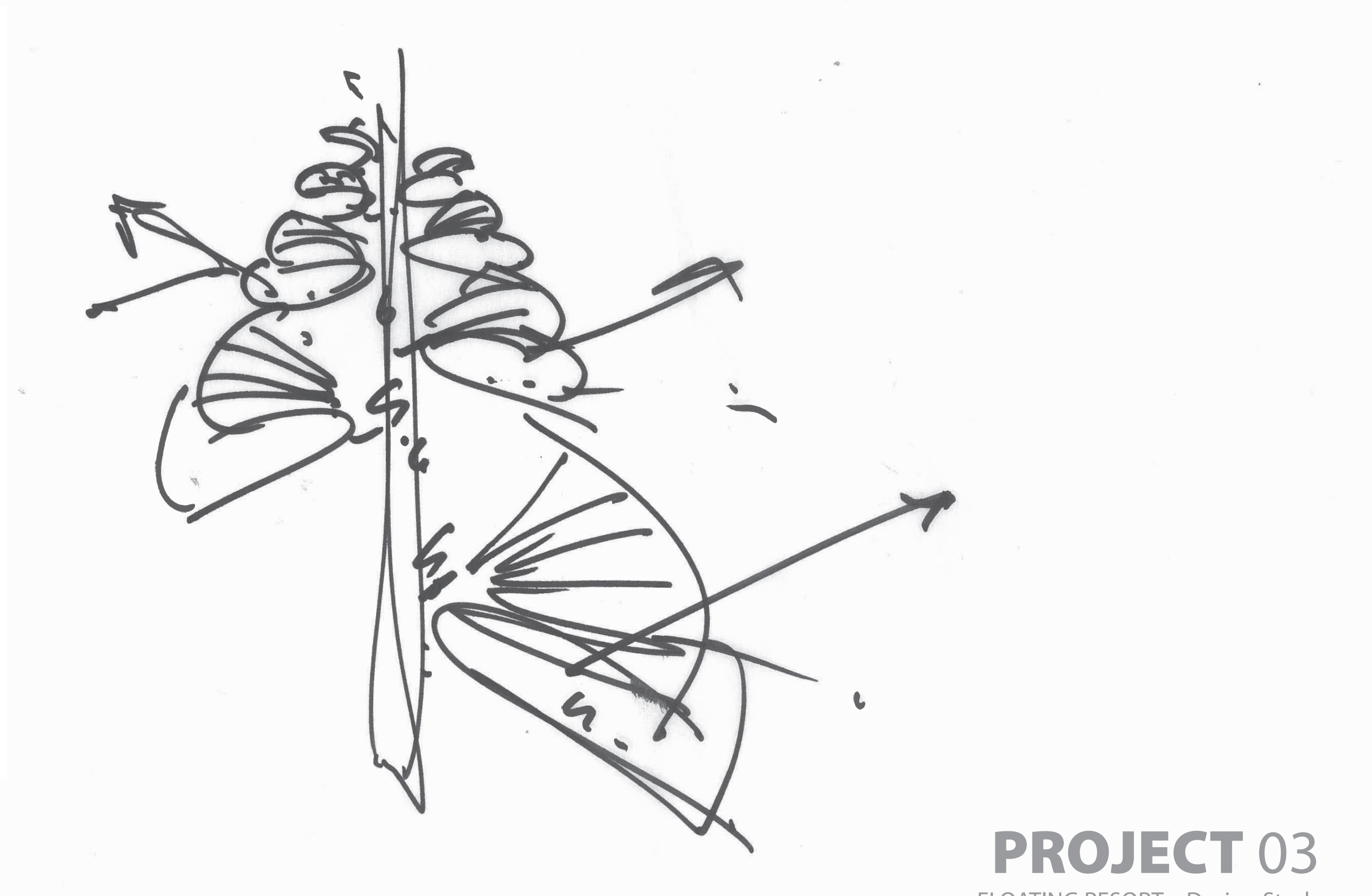






LOTUS MARINA \_ Monaco Smart & Sustainable Marina, International Competition 1. Price





# PROJECT 03

FLOATING RESORT \_ Design Study













## PROJECT 04

FLOATING HOMES \_ Medienhafen Düsseldorf











# STRUCTURELAB

