



About Ro Technology

Ro Technology was founded in 2011, by a group of experts with long-standing experience in ICT systems engineering and design.

Our values, the basis of our corporate strategy, have always been shared by all company staff and they are applied everyday.

The Group

ρ Technology

CAB
consulting

ROBELTECH





Organization Areas



R&D

Participating as technology provider partner in regional, national, and European research/innovation projects



Projects

Developing comprehensive software solutions, managing all projects phases from analysis to post-sales support



Consulting

Providing services in outsourcing aligned with client's business objectives and technological requirements.



Our Expertise

Software Development & System Integration Management

- Design & development of software for different contexts
- Design & implementation
- Web applications/GIS
- Software Management & maintenance for third-parties
- Interfaces and network connections
- Software testing automation



R&D Area: The Heart of Innovation

The Research & Development Area is the beating heart of the company: a laboratory where innovation meets the enthusiasm of a team that is always ready to face the challenges that technology, in its rapid and continuous development, presents every day.

The innovatory nature, experience, technical capabilities and high quality of the results allow Ro Technology to participate in **regional/national and European research projects** in collaboration with universities, research centers and prestigious industrial partners.

1

Areas of Expertise

Smart Agriculture, Blockchain, IoT, GIS, Energy management, Air Quality, Food Traceability, Data aggregation & visualization, Data Management, Cybersecurity.

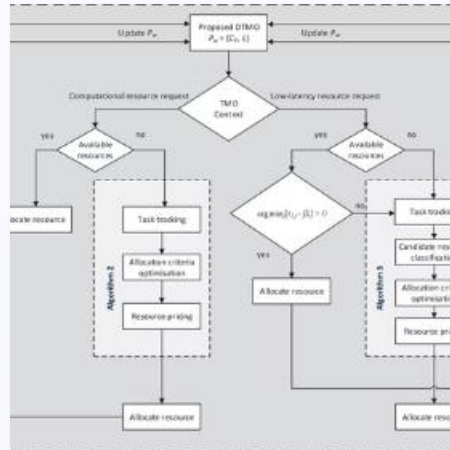
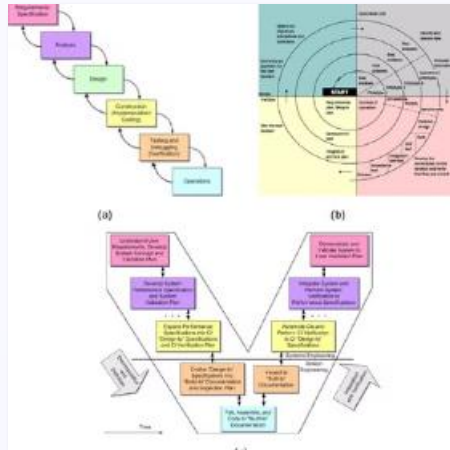
2

Technological Context

Decoupling/Asynchronous interaction, Data preparation/readiness, API, Microservices, Edge Computing, Encryption on IOT communication protocols.

Research Projects

Ro Technology participates in various innovative research projects across different domains, from smart agriculture to cybersecurity.



Research Prototypes

Coop Traceability BlockChain APIs

A traceability platform that certifies data collected from supermarket checkouts for future consultation.

NOVA Projects

An IIoT platform used in the process production of chips and microcontrollers in Clean Rooms, scheduling and monitoring the Burn In production process.

Damon

A highly scalable IoT system that collects data in the agri-food sector with IoT sensors.

IoT Security

An IoT platform that collects different kinds of data, encrypts them in the security layer, and displays them on a real-time dashboard.



Project Area: Developing Solutions

The Project Area **develops solutions** for customers by managing all project phases: requirements analysis, architectural design, development, testing and deployment.

The aim is to provide our expertise in order to give an added value on the project implementation.

1 A Winning Team

Composed of experts with different skills, allowing work in various technological contexts (Java, .Net, Liferay, GIS, PLSQL). Selected based on project requirements and continuously trained.

2 Quality Standards

The team works in a controlled environment (PMP® or Prince 2®) and uses processes, procedures, and instructions developed according to the European standard UNI EN ISO 9001:2008.

Areas of Expertise

- Lawful Interception
- Data Retention
- Networking
- GIS
- Portals
- Logistics
- CyberSecurity
- Environment

 SMART INVENTORY

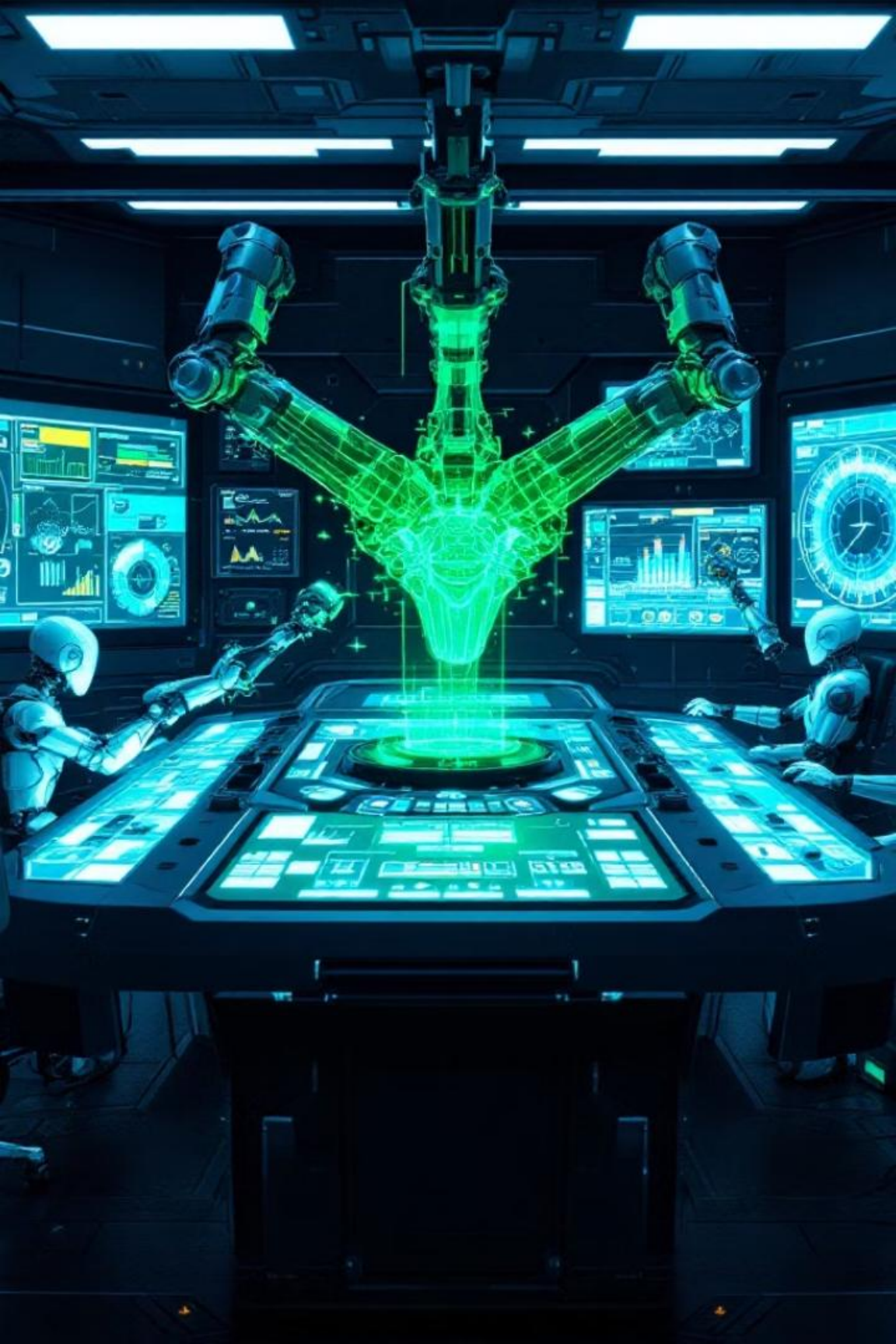
 mobile
MONITORING

 iris
Interception & Retention Integrated System

 secfull
MEETINGS

 SAG

 C-SOC



Key Solutions

1

Interception & Retention Integrated System (IRIS)

A platform for managing legal authority requests, offering interception functions and supporting various telecommunication services.

2

Real Estate and Asset Governance Suite

Manages real estate processes, from asset management to facility and property management, with georeferencing capabilities.

3

Secure IoT in Real Time

Integrates various sensors with guaranteed security, geolocation, machine learning, and blockchain technologies.

4

IoMT&5G Telemedicine Platform

A highly reliable platform for telemedicine with data encryption, dual authentication, and integration with medical devices.



Consulting Area

The consulting area, thanks to the work of highly specialised consultants, provides services in line with the customer's business objectives for any software development need, providing solutions for complex systems, including enterprise architectures.

Our Approach

Our candidate selection process is based on technical knowledge, experience, motivation, maturity, and management skills. New employees are trained by experienced technicians and usually start with internal assignments before working at customer sites.

Target Markets and Sectors

- Telecommunications
- CAP and PAL
- Aerospace and Defence
- Banking and Insurance
- Automotive
- Energy & Utilities
- Media & Communication
- Welfare & Insurance Entities

info@rotechnology.it

<http://www.rotechnology.it>



Strada del Drosso, 33/8,
10135 Torino, Italy
Tel: +39 02 8088 7390

Via Benedetto Croce 40
00142 Rome, Italy
Tel: +39 0621128876

Via Vigevano, 18, 20144
Milano, Italy
Tel: +39 02 8088 7390

