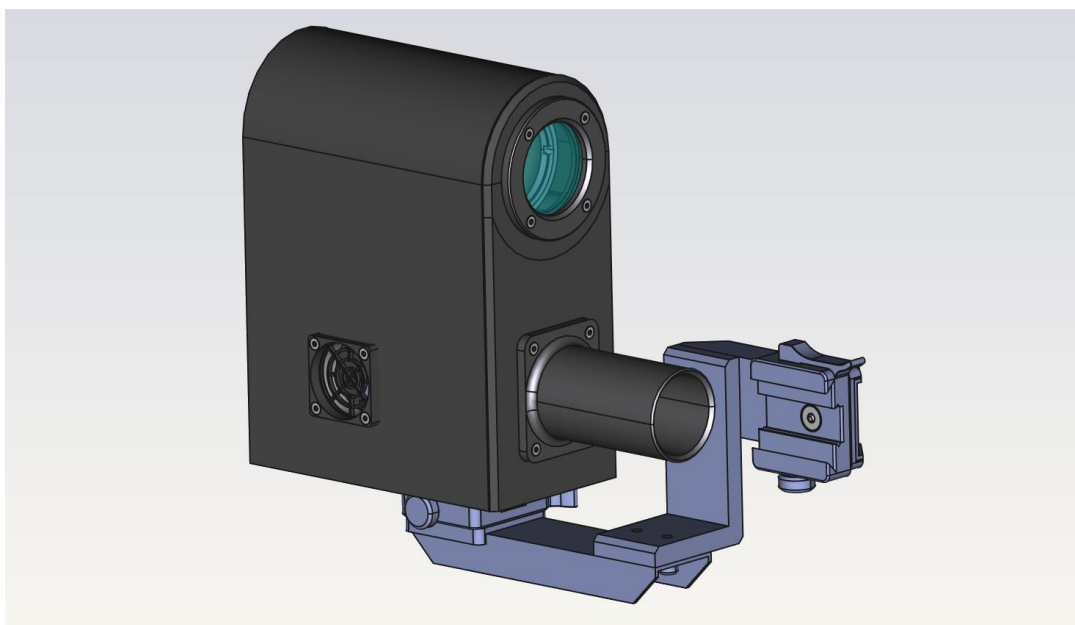


# **RAPACE** 110

## **Réglage d'Arme Par Apprentissage et Correction Etalonnée** "Set and Get" Correction Weapon Setting System



### **STARNAV**

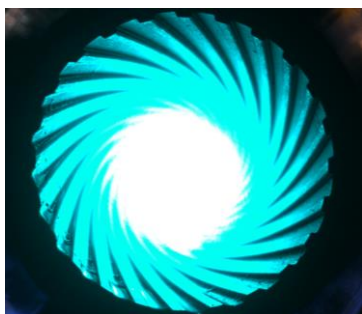
Quartier KOENIG  
29, rue Jean-Louis Cartigny  
14760 Bretteville sur Odon  
France  
+33 2 31 74 18 82  
[contact@starnav.fr](mailto:contact@starnav.fr)  
[www.starnav.fr](http://www.starnav.fr)

ISO 9001  
EN 9100  
BUREAU VERITAS  
Certification





RAPACE 110 lets you adjust a gun without firing. It is quick, discreet and accurate. It is currently adapted to HK G36 and HK UMP weapons. It can also be adapted to weapons with a barrel-to-sight distance of between 90 and 130 mm.



## System

|                |                          |
|----------------|--------------------------|
| Size:          | 400x 190 x 75 mm         |
| Weight:        | 1170g                    |
| Camera:        | 6.41 Mpix variable focus |
| Screen:        | UHD diag 10mm            |
| Installation : | Directly on the weapon   |
| Power supply : | Via 2 x USB              |



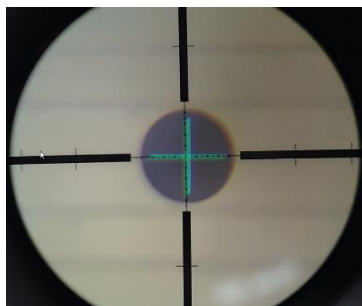
## Cartridges

|                |             |
|----------------|-------------|
| Technology :   | led         |
| Calibers :     | 5,56mm, 9mm |
| Power supply : | USB         |



## Computing unit

|                    |                |
|--------------------|----------------|
| Ruggedized tablet: | IP65           |
| Processor:         | Intel Core i 5 |
| Memory:            | 4GB            |
| ROM:               | 16 GB          |



## Performances

|                         |                                   |
|-------------------------|-----------------------------------|
| Accuracy:               | 0.1mrad ( $1 \sigma$ ) = 1cm@100m |
| Screen resolution:      | 0.05mrad                          |
| Calculation time:       | 10s                               |
| Software:               | Integrated                        |
| Number of measurements: | Unlimited                         |
| Nb of memorized conf.:  | Unlimited                         |



## Adjustment capability

|                     |   |
|---------------------|---|
| Viewfinder type:    | <ul style="list-style-type: none"><li>- Optics</li><li>- Red dot</li><li>- Mechanical</li></ul>   |
| Type of adjustment: | <ul style="list-style-type: none"><li>- Boresight (geometry)</li><li>- Anterior setting</li></ul> |

