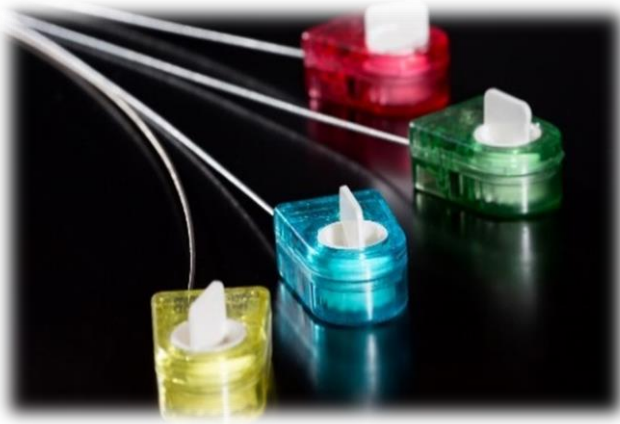


## SECURITY SEALS and PLASTICS MANUFACTURING



**Defterdar Mah. Otakçılar Cad. A Blok**  
**Has-On Ticaret Merkezi**  
**No:76 B Eyüp / İSTANBUL**



### **SECURITY SEAL PLS 100.**

Our high-end security seal contains an impeller that can rotate in one direction with a one-way locking capsule. It is completely closed to tampering, providing a high level of security

#### **CHARACTERISTICS OF THE PLS 100 SEAL.**

- Design with non-flammable material.
- Steel winding wire is used.
- Possibility of marking any design: logo, barcodes, etc.



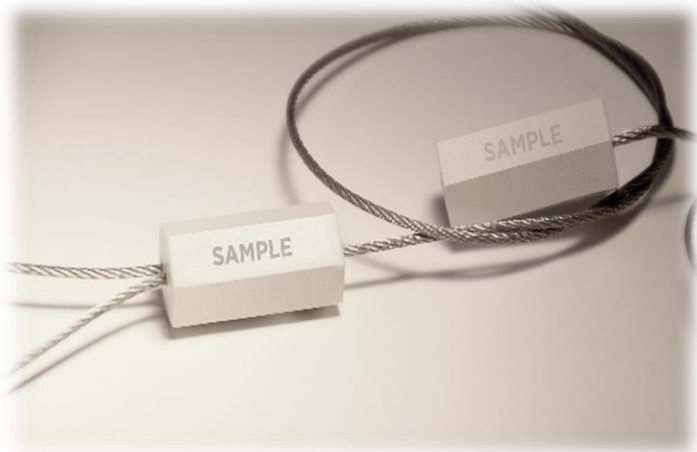
### **CHARACTERISTICS OF THE PLS 80 SEAL.**

- Design with non-flammable material.
- Steel winding wire is used.
- Possibility of marking any design: logo, barcodes, etc.

#### **PLS 80 PLASTIC STRIP SAFETY SEAL.**

It is a versatile and practical security seal with 4 steel springs inside. The belts have different lengths and are applied to the body of the seal.





## **PLS70 HIGH LEVEL SAFETY SEAL.**

Adjustable steel cable security seal. It is suitable for the conditions of use: Warehouse, Safe, where logistics and high protection are required. The body is generally produced in white for easy marking and readability. Once the seal is made, it is broken only with a cutting device.

### **CHARACTERISTICS OF THE PLS 70 SEAL.**

- Design with non-flammable material.
- Steel winding wire is used.
- Possibility of marking any design: logo, barcodes, etc.

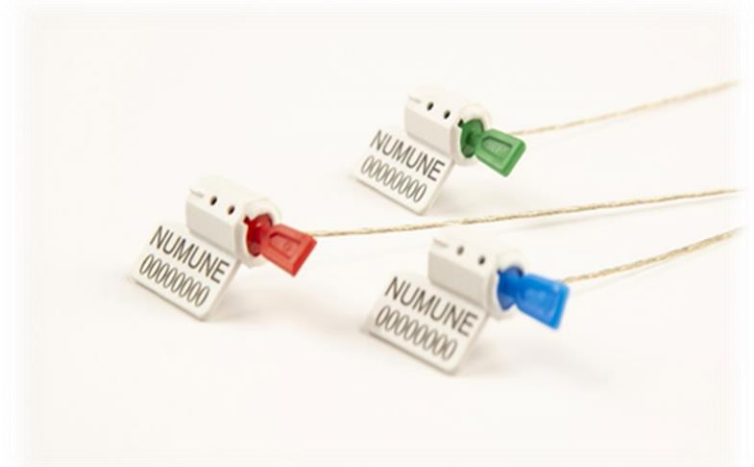


### **CHARACTERISTICS OF THE PLS 30 SEAL.**

- Design with non-flammable material.
- Steel winding wire is used.
- Possibility of marking any design: logo, barcodes, etc.

### **SECURITY SEALS TWISTER PLS 30**

It is a practical security seal with 4 steel springs inside. It can be made in different Colors.





### CONNECTION LOCK.

Our product has been created for the input and output connections of meters. This is 1 piece that are joined and at the moment of closing it cannot be reopened.

### CHARACTERISTICS.

- It is made of polycarbonate.
- Steel winding wire is used.
- Working temperature of  $+ 90^{\circ} \text{C}$  /  $-40^{\circ} \text{C}$
- Non flammable.
- They are produced in size 15-20 for water meters and 25 for gas meters



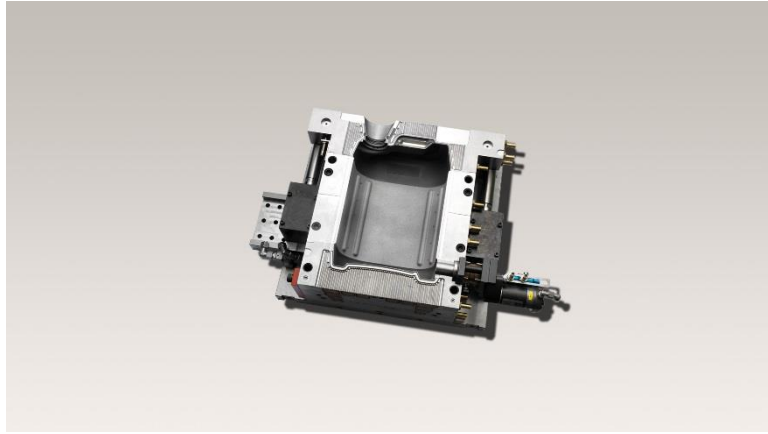
### PLASTIC SECURITY SEAL PLS 15

Security seal made of polycarbonate.  
 $-40^{\circ} \text{C}$  /  $+ 80^{\circ} \text{C}$  working temperature  
Not flammable.



## PLASTIC MOLDING

There are many variables that affect the formation of the mold such as quality and quantity, duration of use, printing speed and number. These variables are; It guides us on many issues such as the class of the steel to be used for the mold, the raw material and content of the product. It requires precise planning before modeling and mold manufacturing. We are working with universities for the new configuration of steel and plastic and their use in living spaces.



## PLASTİK INJECTION

Rather than being a continuation of the works in the sector, we aim to be a competitive brand that adopts special projects and shares our knowledge and experience with the companies we provide consultancy services in the world market.