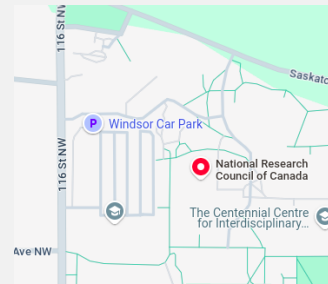


Paving the way for the intelligent transportation revolution

Who we are

The **Networked Optimization, Diagnosis, and Estimation (NODE)** Lab's research programs aim to **advance safe decision-making** and **motion planning** for cyber-physical systems and shared human-autonomy controls, with a focus on intelligent systems in unstructured and dynamic environments.

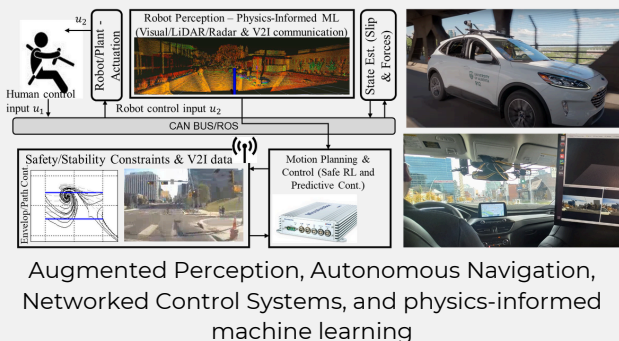
Where to find us



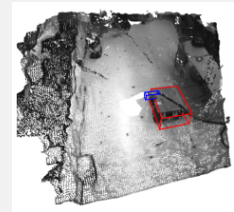
11421 Saskatchewan Dr
NW 5th floor,
Edmonton, AB T6G 2M9

Research Programs & Deliverables

Fundamental Research



Knowledge Development and Technology Transfer



Industries: robotics, intelligent transportation, assistive technologies, and autonomous systems

Sponsors & Funding Agencies



Know more about our research by scanning the QR code

