

ICONICALLY DIFFERENT



Battersea Power Station, London WilkinsonEyre Architects Photo: Tim Fisher Photography

We are Jansen

And we are totally committed to innovation.

Whether as supplier of construction systems for architectural solutions or as manufacturer of profile systems – we design the future and form your ideas into a sustainable, aesthetic and unique solution.



Royal Museum for Central Africa, Belgium BEEL Architecten B.V. Photo © Luca Beel



KHI House Methoni, Greece Lassa Architects Photo © naaro

As we are shaping the face of the city together with you, we feel responsible for energy efficiency, lightweight constructions, sustainable and circular materials, the careful use of resources, and climate protection. We call it Sustainability by Architecture.

JANSEN



WERK12, München, Germany – MVRDV & N-V-O Nuyken von Oefele Architekten - Photo © Ossip van Duivenbode

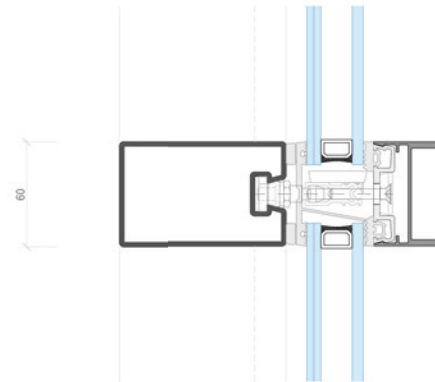
JANSEN

Knowledge center for architect and façade builder

When you as an architect challenge us with your design ideas, we set out to find the right profile to match your project. Even if you choose bronze profiles, we can help you find the right solution. Our standard series come in standard (powder-) coated steel, stainless steel and Corten “weather resistant” steel.



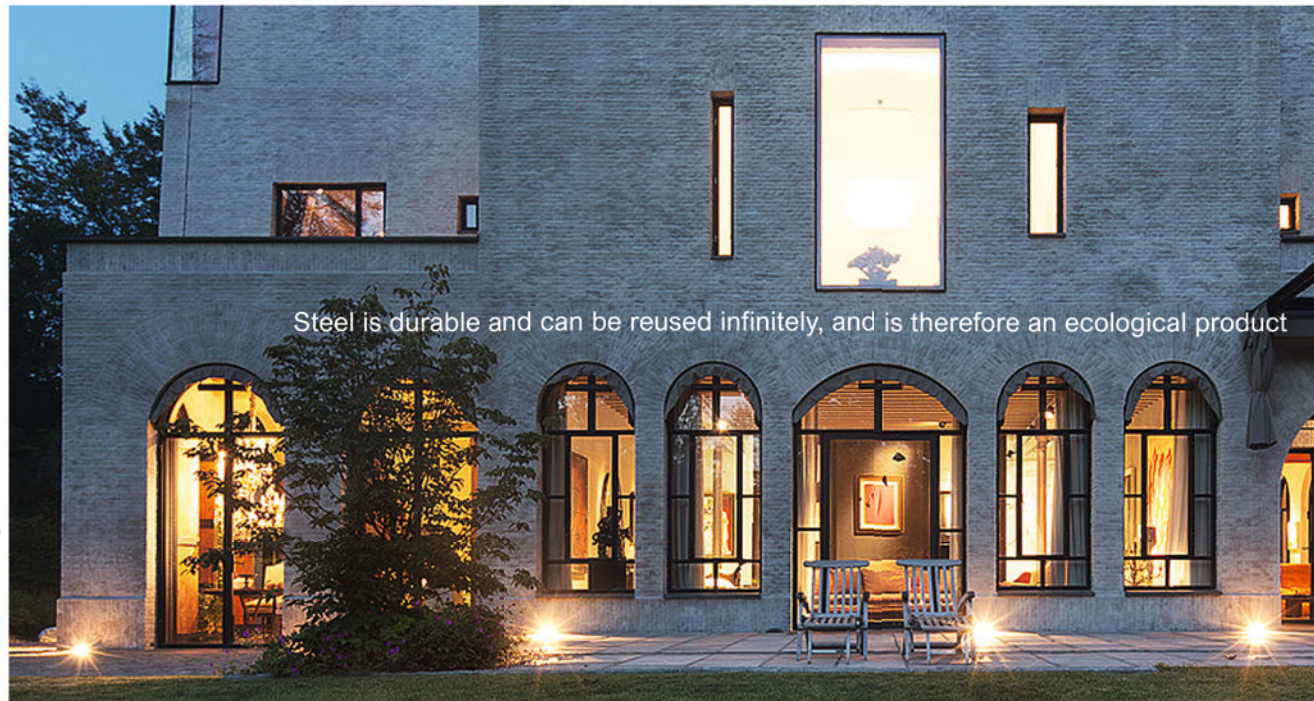
VISS Façade profile



PROJECT DETAILS

Saint Bavo Cathedral
Gent, Belgium

ARCHITECTS
Bressers Architecten, Gent/BE
PHOTO
© Tim Van de Velde



PROJECT DETAILS

Manor house,
The Netherlands

ARCHITECTS
DOK Architects Amsterdam
PHOTO
© Arjen Schmitz



The Chimney House Sydney, Australia
Architect: Atelier DAU (Emma Rees-Raaijmakers & Suzanne Green)
Photo: © Tom Ferguson Photography

Heat and frost, high humidity, heavy tropical rain and a picturesque landscape: architects need to take a wide range of conditions into account. However, the use of the large scale glazed surfaces allow you to implement your design concept without compromise.



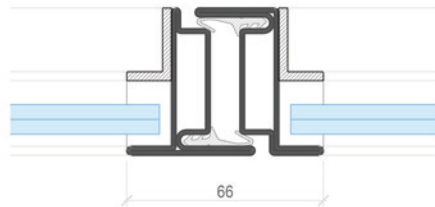
CODA Museum, Apeldoorn NL
 AHH Architects, Amsterdam
 PHOTO © Petra Appelhof

Daylight all the way inside

JANSEN



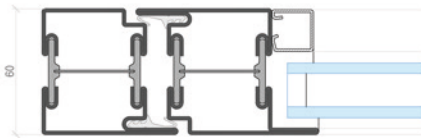
Art 15 profile



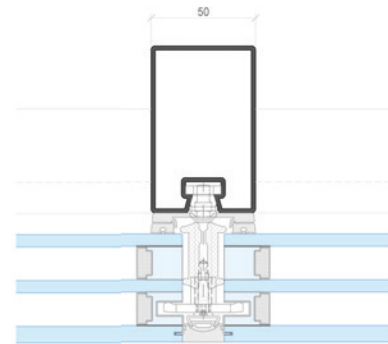
Private residence, Melbourne
 DX Architects Photo: Emily Bartlett Photography

JANSEN

Janisol steel door (insulated) profile



VISS SG Façade profile



PROJECT DETAILS

Juvelen, Sweden

ARCHITECTS
Utopia Arkitekter AB
PHOTO
© Magnus Östh



REUSE is better than RECYCLE

PROJECT DETAILS

Gare Maritime
Brussel, Belgium

ARCHITECTS

Renovation of structural fabric, outer and inner
facades: ALTSTADT Office for architecture,
Brussels, with Bureau Bouwtechniek, Antwerp
Development of Halls: Neutelings Riedijk
Architects, Rotterdam with Bureau
Bouwtechniek, Antwerp

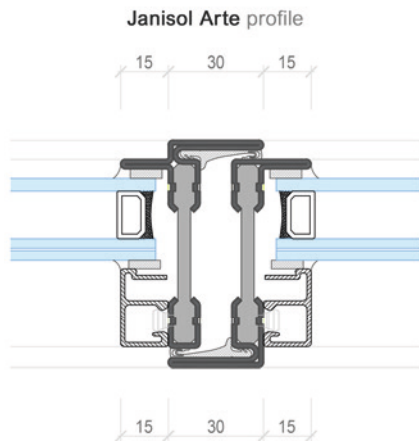
PHOTO

© Tim Fisher



Battersea Power Station, London WilkinsonEyre Architects Photo: Tim Fisher Photography

From factory to office to apartment block - there is no better way to spell sustainability than by reusing existing buildings.





JANSEN



PROJECT DETAILS

Futura One, TW-Taipeh

ARCHITECTS
Philipp Mainzer, Frankfurt am Main/DE

PHOTO
© Shawn Liu Studio

JANSEN



VISS³ free-form facade



VISS³ 3D printed steel nodes

Façade engineering for projects

- Façade advice
- Preliminary static calculations
- U-value calculations
- SketchUp models
- CAD & BIM models
- Sustainability advice

Contact us

Jansen AG

Industriestrasse 34
9463 Oberriet/CH

+41 71 763 91 11
info@jansen.com

