

An aerial night view of a city, likely Istanbul, with a glowing network of orange lines and dots overlaid on the landmass, representing a vehicle tracking and fleet management system. The city lights are visible as bright orange and yellow spots against the dark background of the sea and sky.

SEYİR

**VEHICLE TRACKING AND
FLEET MANAGEMENT SYSTEM**

A photograph of the Seyir Mobil building, a modern structure with a curved glass facade and a dark roof. The building is situated in a city with a body of water and mountains in the background. The Seyir logo is visible on the building's facade. The sky is clear and blue.

SEYİR

who are we?

Seyir Mobil is a technology company established in 2012 that offers solutions in vehicle tracking and fleet management systems with its logistics experience dating back to 1993 and its own R&D, and produces and develops its own software and hardware.



29 SOFTWARE ENGINEERS NEARLY 100 EMPLOYEES

All our operations; It is managed from the Head Office building with a closed area of 2300 m2 located in Derince district of Kocaeli province, consisting of R&D, Information Technologies, Production, Technical Support, Warehouse, Customer Relations, Accounting, Human Resources, Advertising and Quality departments. We produce all the software and hardware we use in our products in-house, with 29 Software Engineers working in our own R&D center. Seyir Mobil servers are located on Turkey-based Public Cloud with "Tier 3" certification.





18.000 CUSTOMERS

200.000 VEHICLE TRACKING

DEVICES

International ISO 9001, ISO 14001, ISO 27001 and Seyir Mobil, which has ISO 10002 quality certifications, It has CE and E-Mark certificates for its products.



SEYİR



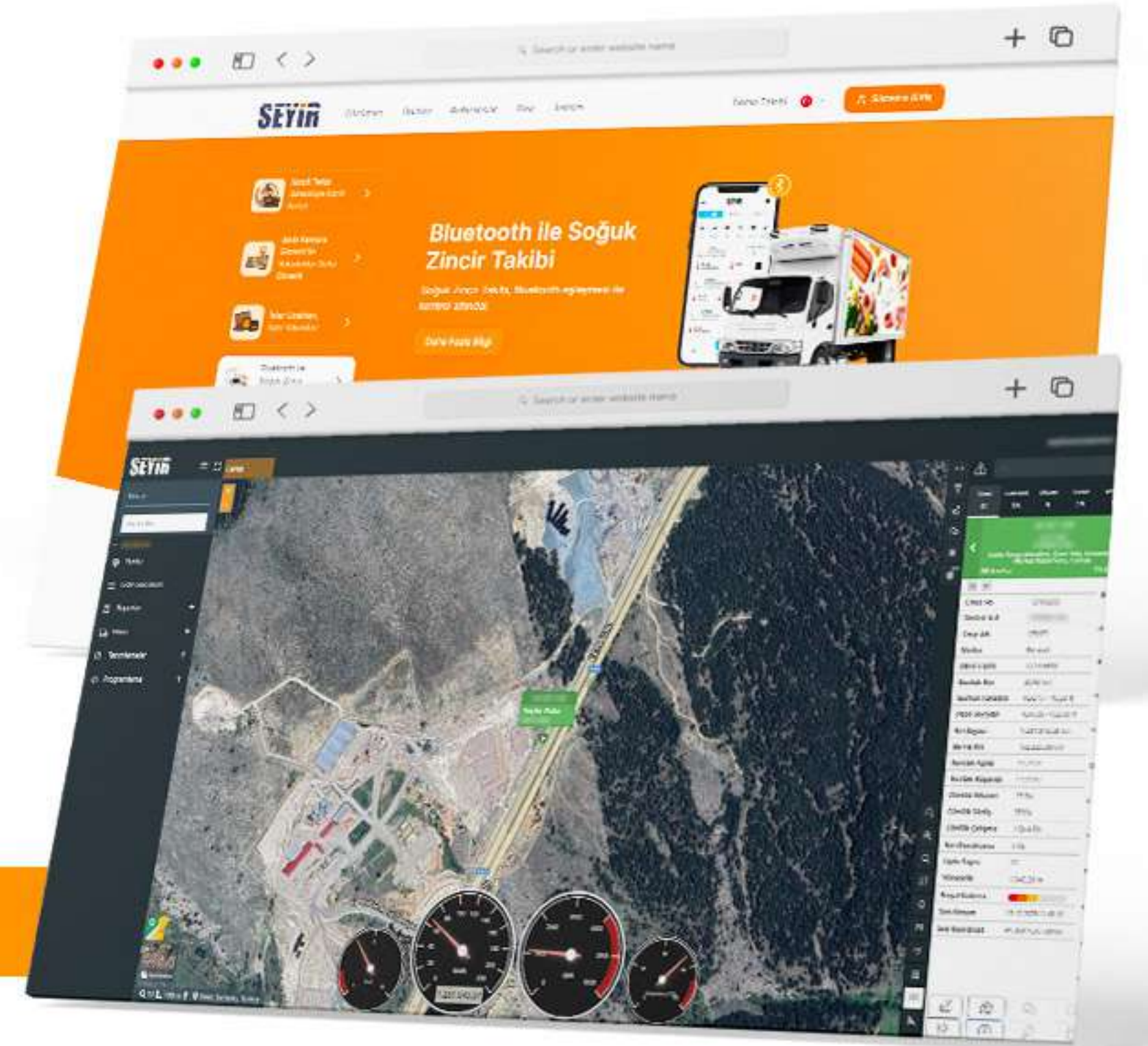
EXPLORE IT ON
AppGallery

Available on the
App Store

GET IT ON
Google Play

INTERFACE

You can access the Seyir Mobil interface either via the web or from your mobile devices and tablets. By clicking the "System Login" button on the website, you can access all the solutions offered to you from anywhere you want after logging in with the user-specific login information.



A semi-truck is shown driving on a road at night. The truck is illuminated with a blue wireframe overlay, highlighting its structural components. The truck's headlights are on, and the road ahead is visible. In the top left corner, the word "SEYİR" is written in a bold, white, sans-serif font with a small orange square above the 'Y'.

SEYİR

CANbus Integration

With its CANbus reporting capability, Seyir Mobil provides critical information such as fuel consumption, accelerator pedal position, and odometer from vehicles to its customers with nearly 20 report types.

Through these reports, our users share sensitive and important information on financial and occupational safety issues such as fuel economy and safe driving, while also adding a new vision to the sector.

You can access the following data without deviation via CANbus.*

- Vehicle Speed, Engine Speed
- Cover. and Total Fuel Consumption
- Engine Temperature, Fuel Level
- Axle Weight, Engine Hours
- Total Kilometers, Service Distance

*These data depend on vehicle brands and models. It varies.



DOWNLOADING DATA FROM DIGITAL

Digital tachograph data download
Under Seyir Mobil
It can be solved in 2 different ways.

Downloading with TAVI(Local):
By connecting the TAVI (local) device to your vehicle's compatible digital tachograph, you can download the tachograph data and easily transfer it to digital media.

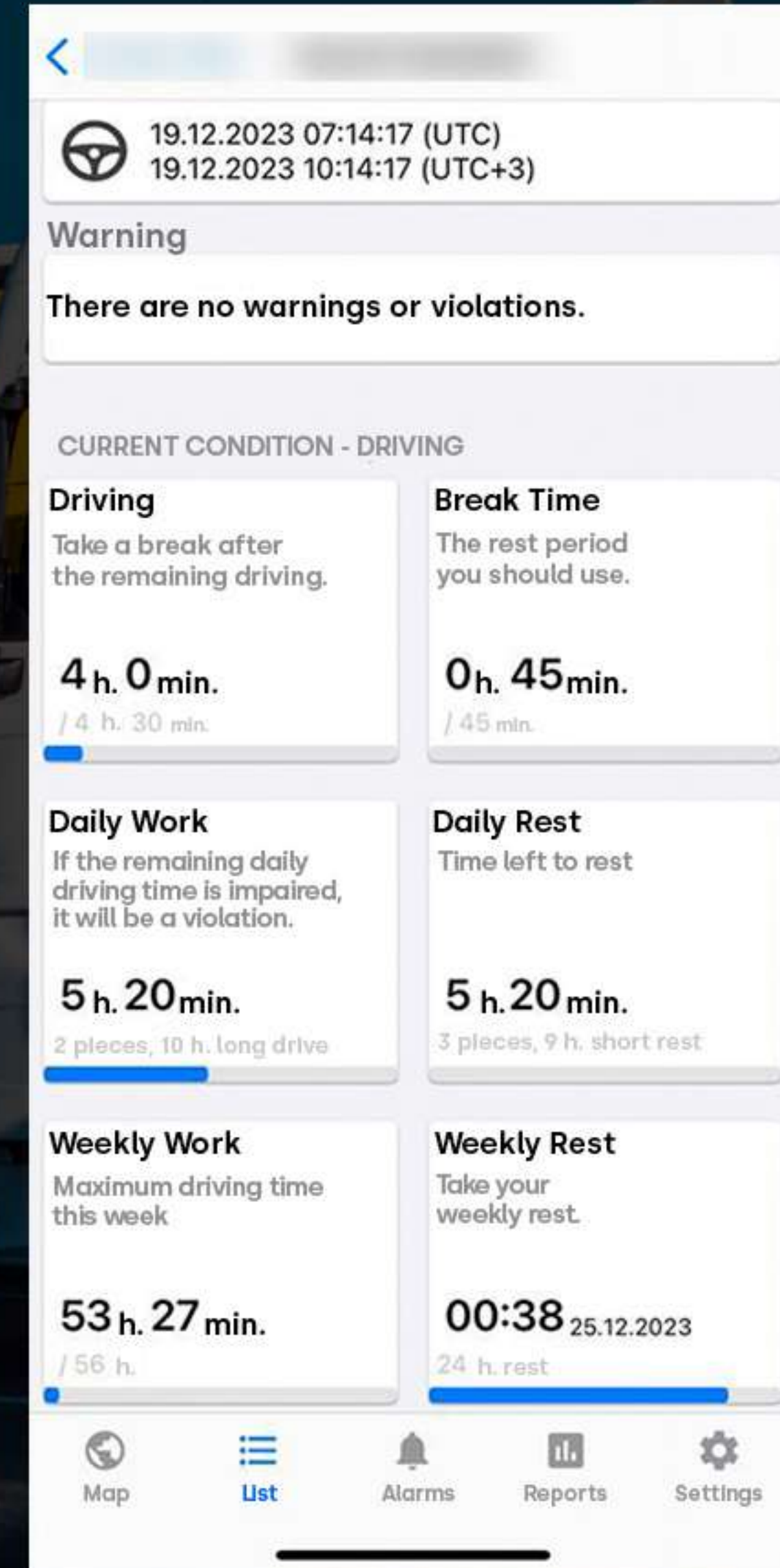
Remote Download:
Seyir Mobil System with our professional vehicle tracking device without requiring any additional software and hardware. You can access and download your vehicles' tachograph data via .

*Due to legal obligation, driver card data must be downloaded and archived every 28 days, and digital tachograph data must be downloaded and archived every 90 days.

REMAINING DRIVING TIME TRACKING

This system allows you to access real-time driving times created by the tachograph in all your vehicles with compatible digital tachographs. It helps drivers manage their legally determined daily and weekly driving and rest periods in the best possible way.

Thanks to the driver card inserted into the digital tachograph, Seyir Mobil allows instantaneous retrieval of daily and weekly driving rights, daily and weekly rest time, and weekly rest time data generated by the digital tachograph. Thus, you can prevent accidents caused by fatigue and ensure efficient use of driving time.





OUR PRODUCTS

**Vehicle
Tracking System**



**Wireless Trailer Matching
and Cold Chain Tracking**



**Object
Tracking System**



**From Digital Tachograph
Data Download**



**Fleet Management
System**



**Mobile Tracking
System**



**Smart Camera
System**



SEYİR

FM20

PROFESSIONAL VEHICLE TRACKING SYSTEM

From instant location tracking to CANbus integration; Meet all your sectoral needs, from remote digital tachograph data downloading to temperature monitoring in your refrigerated vehicles, with the New FM20, which supports EDGE 2G and LTE 4G.

Thanks to this device,

- You can access the instant location information of your vehicles 24/7.
- Thanks to CANbus integration, you can see unnecessary idling, rev analysis, km meter and fuel status information of your vehicles. In this way, you can follow the fuel level and fuel consumption.
- You can remotely download the digital tachograph data of your vehicles and drivers.
- You can define a temperature level for your vehicles with refrigerated chassis features, so you can monitor the temperature values.
- You can easily connect to your trailers with the trailer-tractor matching module.
- You can instantly view your drivers' daily and weekly driving and rest times.
- You can have two-way messaging with your drivers.

Thanks to FM20's internal memory, it records in its own memory in locations where GSM data cannot be received. As soon as it receives GSM data, it continues sending data from where it left off. In this way, you can continue your follow-up without interruption.



SEYİR

FM20 EQUIPMENT

Navigation and Messaging



Thanks to the navigation that works integrated with the vehicle tracking system, you can follow the destination address on the map by hearing it aloud from the navigation.

Emergency Button



Thanks to this equipment placed inside the vehicle, you can enable drivers to send an alarm to authorized persons by pressing the button when they encounter an emergency situation.

Door Sensor



Thanks to this sensor installed on the doors, you can instantly monitor where and when the doors are opened and closed. It is divided into two: metal and magnetic.

Driver Recognition Unit



With the ID cards given to drivers, you can track which vehicle was used by which driver, when and for how long.

SEYİR

MT20

Mobile Tracking System



Motorcycle



Forklift



Caravan



Have peace of mind with the new generation mobile tracking device that can be integrated into all your mobile vehicles that you want to track, from motorcycles to scooters, from caravans to forklifts.

In addition to standard vehicle tracking features, MT20, which includes many features such as water resistance, sleep mode, acceleration sensor, theft alarm, wide operating voltage range, also supports electric vehicles (Scooter, electric motor, electric forklift, etc.) in addition to standard vehicles. Thanks to the internal memory of

MT20, it records in its own memory in locations where GSM data cannot be received. As soon as it receives GSM data, it continues sending data from where it left off. In this way, you can continue your follow-up without interruption.

SEYİR

MT20



Impermeable



Theft Alarm



De-energized Vibration Alarm



Thanks to its specially developed "Vibration Alarm, Theft Alarm, Power Loss Alarm" features, the mobile tracking system sends you an alert as soon as your vehicle moves in undesirable situations.

The improved internal battery and power saving feature offers you longer battery life and helps protect the battery health of your vehicle. Moreover, the device can continue to detect vibration even when it goes into sleep mode.

Battery Life Chart

	400 mAh*	1500 mAh*
30 min Period	3 days	12 days
1 h Period	6 days	22 days
3 h Period	16 days	59 days
6 h Period	28 days	105 days
12 h Period	46 days	171 days
24 h Period	67 days	250 days

Vehicle Accumulator Life Chart

	Accumulator 6 Ah**
30 min Period	42 days
1 h Period	57 days
3 h Period	74 days
6 h Period	80 days
12 h Period	83 days
24 h Period	85 days

* Indicates the operating times of the device with its internal battery when the vehicle's ignition is turned off.

** It indicates the operating times with an average 12V motorcycle battery when the device is connected to a power source and the ignition is turned off and the power saving mode is on.

SEYİR



ST20



VEHICLE TRACKING SYSTEM

The new generation standard vehicle tracking device ST20 offers you everything you expect from a vehicle tracking system at low costs. ST20 was developed to understand and learn information such as where the vehicles are, how they are used, and idle times, along with time information. In addition, if you wish, you can access your vehicle's CANbus data with the ST20 Pro model and monitor your vehicles uninterruptedly with its improved battery.

Thanks to the internal memory of ST20, it records in its own memory in locations where GSM data cannot be received. As soon as it receives GSM data, it continues sending data from where it left off. In this way, you can continue your follow-up without interruption.

Thanks to this device,

You can track your vehicles 24/7 in real time and retrospectively.

You can define speed limit and region.

You can receive alarms regarding the situations you define.

You can observe the place and time when the tank cover opens and closes.

You can create instant and historical reports about your vehicles and drivers.

You can access your vehicle's CANbus data. (Pro model only)

Driver Recognition Unit

Engine Blocking Kit

Door Sensor

DRIVER RECOGNITION UNIT

It enables tracking of which vehicle was used by which driver, when and for how long, with the ID cards given to the drivers.

ENGINE BLOCKING KIT

In undesirable situations or when you want to prevent off-duty use, you can prevent the vehicle from starting by locking its ignition with a single command.

DOOR SENSOR

The Door Sensor is installed on the vehicle doors and allows information about where and when the doors are opened and closed to be sent to the system.

ST 20
EQUIPMENT

SEYİR

NTS20

Object Tracking System



Container



Train



Crawler
Material



Trailer



Caravan



Yacht



Seyir Mobil Object Tracking System is suitable for individual and corporate use in areas without energy connection, where security and operational efficiency are concerned, regardless of the number of vehicles.

In all companies in the service sector such as construction, excavation, distribution, service, health, transportation, insurance and finance; Object Tracking System, which can be integrated into containers, palletized materials, trains, trailers, yachts, shuttles and caravans, allows tracking of all your products that do not have an energy connection.

NTS20, it records in its own memory in locations where GSM data cannot be received. As soon as it receives GSM data, it continues sending data from where it left off. In this way, you can continue your follow-up without interruption.

Battery Life Graph

	1P-3350 mAh*	2P-6700 mAh	3P-10050 mAh
5 min. Period	5 days	10 days	15 days
30 min. Period	30 days	60 days	85 days
1 h. Period	60 days	110 days	160 days
3 h. Period	150 days	300 days	460 days
6 h. Period	290 days	570 days	850 days
12 h. Period	510 days	1020 days	1530 days
24 h. Period	850 days	1700 days	2550 days**

Battery life may vary depending on environmental conditions.

** The device includes a 1P-3350 mAh battery as standard.*

*** According to calculations, the battery life is equivalent to 2550 days.*

However the guaranteed period is 1820 days.



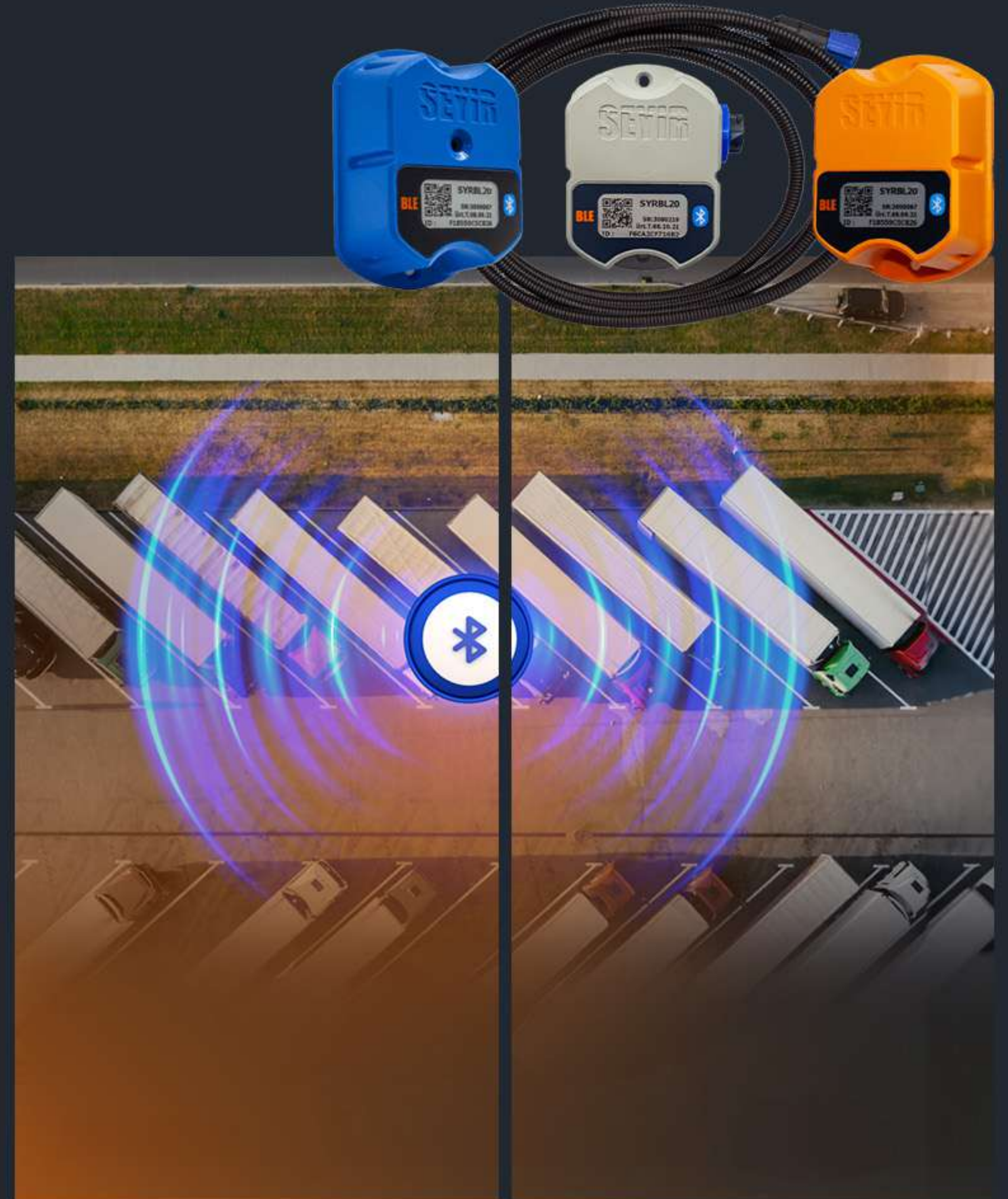
Wireless trailer pairing and temperature monitoring module BLE20 allows you to track only your trailer-truck matching transactions or track temperature measurement in your cold chain, depending on your preference.

Trailer-Truck Match Tracking

The matching process between the trucks in your fleet and your trailers can sometimes turn into a long and complex process. "Which trailer is paired with which truck?" or "Which trailers are available?" You can easily answer your questions such as with Seyir Mobil.

BLE20

Wireless Trailer Matching and Cold Chain Tracking System



SEYİR

Favori Alarm Temizle Çıktı Al Ayarlar Rapor Al

SYRBL2
5893D828D387
RSSI-43 11.04.2023-11:28:43

ETİKET EKLE

21.31
A8A1DE0B0000

0.00

#	ZAMAN	RSSI	SICAKLIK	SICAKLIK	KAPİ
10	11.04.2023-11:28:43	-43	21.31	0.00	K
9	11.04.2023-11:28:34	-41	21.31	0.00	K
8	11.04.2023-11:28:25	-42	21.31	0.00	K
7	11.04.2023-11:28:20	-44	21.31	0.00	K
6	11.04.2023-11:28:16	-45	21.31	0.00	K
5	11.04.2023-11:28:11	-42	21.31	0.00	K
4	11.04.2023-11:28:06	-43	21.31	0.00	K
3	11.04.2023-11:27:57	-41	21.31	0.00	K
2	11.04.2023-11:27:48	-42	21.31	0.00	K
1	11.04.2023-11:27:43	-45	21.31	0.00	K

-4°C

-5°C

-5°C

Temperature Tracking via Bluetooth Matching

It ensures that perishable products such as meat, fish, chicken, ice cream, milk, medicine, vaccines and medical supplies are checked whether they are within the appropriate temperature range during shipment and storage. BLE20, which has internal and external temperature monitoring feature, can easily monitor the temperature ranges and critical temperature changes of the products you carry in your refrigerated vehicles in real time.

BLE20 pairs wirelessly with FM series devices thanks to its Bluetooth technology. In addition, unlike classical cabling methods, it differs greatly from its counterparts with its easy installation feature. The temperature values saved by the device in its memory can be viewed directly via the application you download to your tablet or phone, without connecting to the vehicle tracking device.

BLE20



SEYİR

ARTIFICIAL INTELLIGENCE POWERED SMART CAMERA SYSTEM

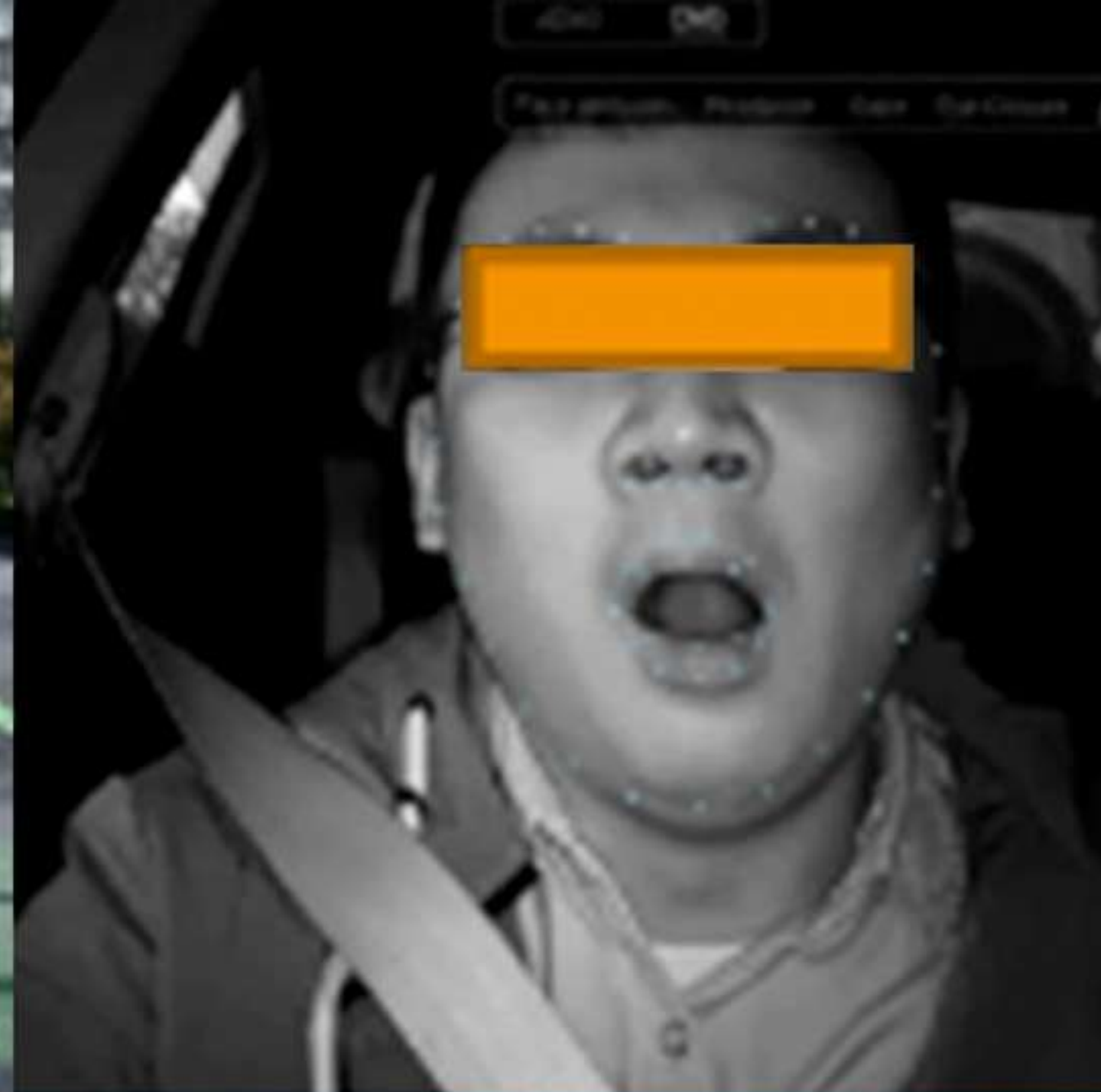
Your vehicles are much safer with smart camera systems that can be easily integrated into all your vehicle groups, including tow trucks, buses, school buses and taxis.

Seyir Mobil Smart Camera Solution, which records the operating hours of your vehicles, offers the opportunity to monitor all events that may occur during the journey. The system, which analyzes driver behaviors such as yawning, fatigue, seat belt use, phone use and smoking with the optional DSM and in-car imaging and recording with high recording capacity, offers maximum security in your operational activities.

Depending on your preference, the system offers "Online" options that allow instant remote viewing or "Offline" options that only record on the device.

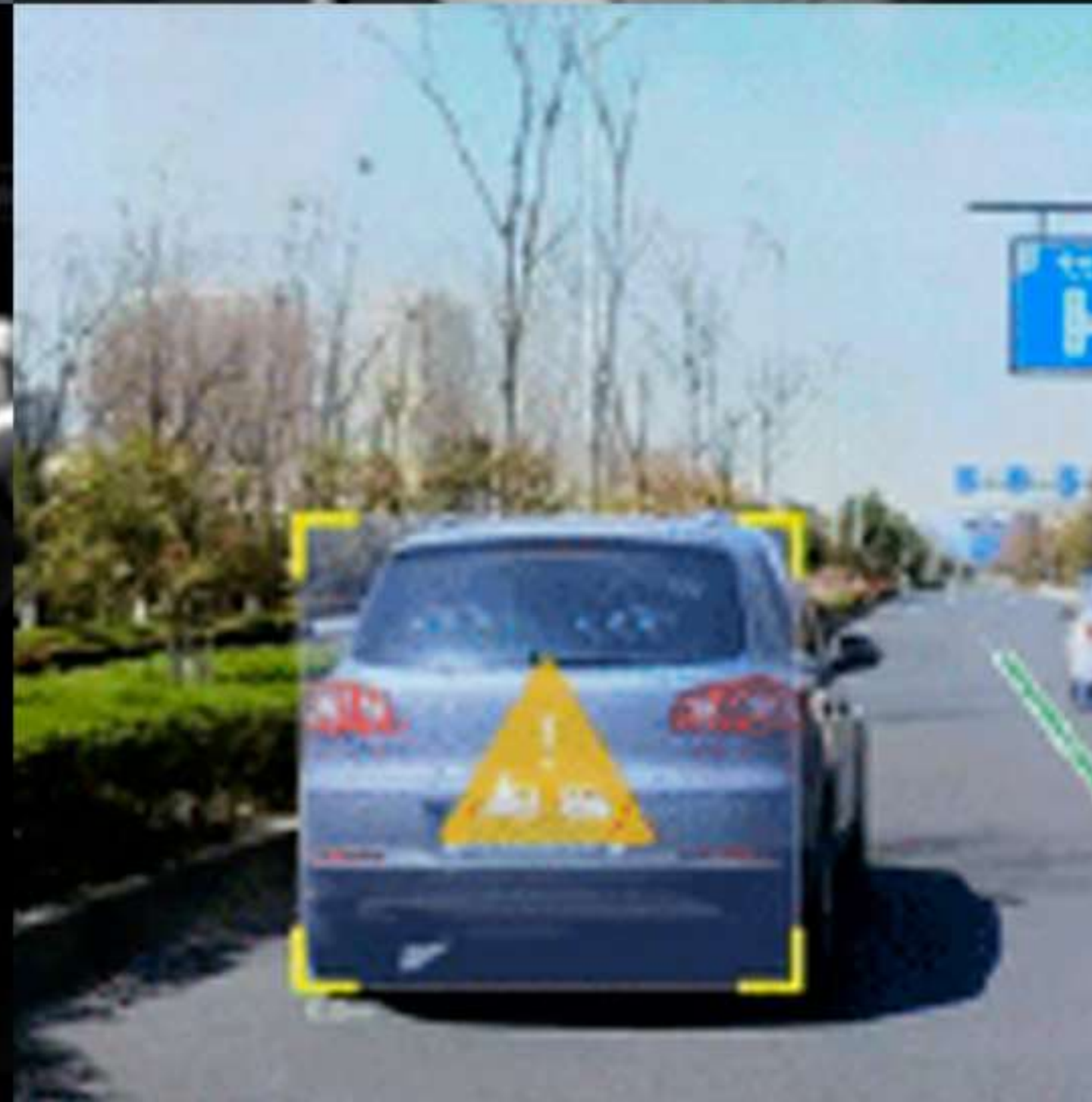


SEYİR



Smart Camera System offers the opportunity to monitor and record in-car and road images with the camera. Accidents and negativities that may occur along the way are recorded. In this way, it allows you to take precautions against administrative fines.

The system detects driver behaviors such as looking around, yawning, eyes closed, smoking, talking on the phone, not wearing a seat belt with the DSM camera. When these behaviors occur, the system warns the driver and uploads the necessary alarm data to the control center.



Camera recordings are stored on an SD card with high storage space, preventing possible recording unit malfunctions in the vehicle. The device has the ability to operate even after the ignition is turned off.

It provides recording at every point of your vehicle with front-of-door imaging, which can be used in multi-door vehicles such as buses and minibuses. Maximize security by recording all kinds of incidents that may occur during passenger boarding and landing.

SEYİR FUEL TANK SECURITY KIT

Companies suffer millions of lira in financial losses every year due to fuel theft and fuel abuse. Companies need to use Fuel Tank Security Products to provide absolute protection against fuel theft in their vehicles.

- Fuel Protection Block
- Float Probe Protection Switch
- Encrypted Bottom Plug
- Diesel Filter Round Trip Protection Apparatus
- Diesel Filter Water Discharge Protection Apparatus
- Gland Connection Apparatus

