



SOLUTIONS FOR INDUSTRY & ENERGY



WE OPERATE WHERE OUR CUSTOMERS NEED US AND ARE READY TO EXPAND WHEREVER THEY GROW

Founded in 1909, Ahlers Logistics is a family-owned company headquartered in Antwerp, Belgium, driving growth across Europe, CIS, and Asia for over a century. With a strong global network and offices worldwide, we provide expertise in supply chain design, warehousing, forwarding, project cargo, trade facilitation, and after-sales support.

We specialize in Industry & Energy and Consumer Goods, delivering tailor-made, sustainable solutions. Our focus on innovation and digital solutions enhances supply chain visibility while minimizing environmental impact for a greener future.



30 years+ specialized knowledge
in strategic markets



International forwarding and
licensed customs broker



In-house warehousing operations



A dedicated team of experts

OUR MISSION

To deliver **high-quality services** and enable our customers to focus on their core business. We offer **innovative, sustainable and tailor-made solutions beyond logistics** with one common approach, global and local.

CORE SERVICES

- End-to-end sustainable supply chain solutions. Licensed customs broker
- Warehouse network in Eastern Europe and Central Asia
- Management of complex global industrial projects, tailor-made with a dedicated team
- Secured transport of high-value or theft-sensitive goods
- Trade facilitation and after-sales services

HOW DO WE DO THIS?

- Dedicated team which understands customers' needs, locally and globally
- Our vast expertise in the complex markets
- Provide the best charter solutions based on customers' requirements
- High-level technical support and economical tailor-made solutions
- On-Time, On-Budget, On-Track project management

PROVIDING TAILOR-MADE SOLUTIONS

WHAT DO WE OFFER?

Ahlers' Industry & Energy team builds on our long-standing agency work with major breakbulk lines, where we handled a lot of oversized and heavy cargo.

However, projects do not only consist of this kind of equipment. More and more cargo is designed to fit into containers. That's why **we focus on full A-Z project management**: transportation planning, customs clearance, and documentation, assisting in obtaining lower or zero import duties or taxes, cargo monitoring, and coordination with suppliers and receivers.

We support our customers in preferred geographical regions with a vast network of dedicated partners specialized in project logistics.

- We build, together with our clients, a customized solution from the initial planning and budgetary phase to the final delivery and facility start-up.
- We control the entire project supply chain through our network of own offices, carefully selected partners, and our team of project logistics experts.
- Whether a heavy lift piece or a small box of nuts and bolts, every package is equally important for making the project successful.

**SUPPORTING PROJECTS FROM
CONCEPT TO COMPLETION,
ALL OVER THE WORLD**



**AHLERS MANAGES COMPLEX
GLOBAL PROJECTS, TAILOR-
MADE, WITH A CLEAR SCOPE
AND DEDICATED TEAM.**

Dave van den Bos
CEO





Transporting heavy-lift drum unit for a steel plant upgrade



Transshipment onto barge at the breakbulk terminal in Antwerp



MACHINERY & ROLLING STOCK

Our team delivers end-to-end, customized transport solutions for heavy machinery and rolling stock across industries like mining, construction, railway, and agriculture.

With 700+ units moved annually — including excavators, dump trucks, and tractors — we provide efficient, global logistics. Our expertise in OOG rail and road transport along the New Silk Road ensures tailored solutions for complex, oversized cargo.

We offer a full pack of value-added services including securing fragile parts, reassembly of details, storage solutions, self-driving options at border crossings and more. From Southeast Asia to remote Mongolia, Ahlers is a trusted partner for seamless, secure delivery — wherever our customers' business takes them.



HEAVY INDUSTRIES

We understand the complexity of large-scale projects in heavy industries. With a broad portfolio across steel, cement, power, and other sectors, we deliver logistics solutions that meet the highest demands for speed, precision, and reliability.

We work with leading Western manufacturers to move critical equipment worldwide — on time and on budget. With deep industry know-how, we ensure deliveries are executed without disrupting our customers' or end-receivers' production.

Our end-to-end services cover all modes — road, rail, sea, air, and inland waterways — along with route surveys, on-site coordination, chartering, and customs, all handled in-house for seamless execution.

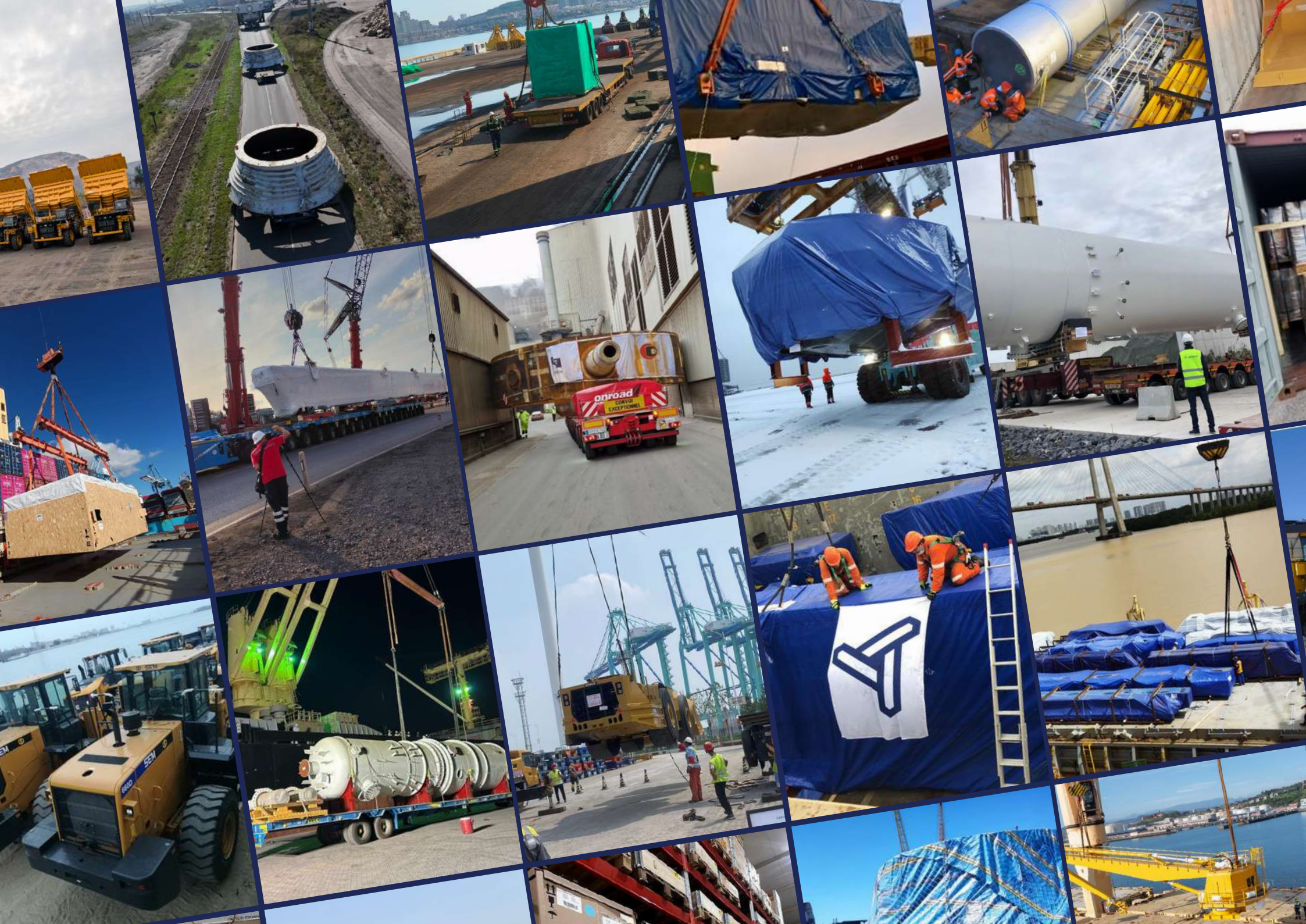


ENERGY EQUIPMENT

From solar panels and wind turbine components to ADR (dangerous) cargo, the energy sector depends on precise, reliable logistics.

Our services include heavy-lift, oversized, and unconventional shipments. We manage complex multimodal routes with full visibility and strict compliance. With in-house customs clearance experts, we help navigate evolving regulations and safety standards.

Ahlers combines sector expertise, global reach, and local on-the-ground insights to deliver logistics solutions that power energy projects forward.



VALUE-ADDED SERVICES

SERVICES FOR MACHINERY SHIPMENTS

- Wrapping, protection and removal of parts
- Additional lashing, shrink wrapping, waxing parts, etc
- Battery charging, washing, reassembly of details
- Storage at transit ports / borders
- Visual or detailed inspections and surveys
- Self-driving option at key China-Kazakhstan/Mongolia crossings

IN-HOUSE CHARTERING DESK

Our Singapore-based global chartering desk collaborates with regional offices worldwide ensuring that for each cargo, they find the most suitable vessels on the market. Besides the match-making role, they monitor market trends, bunker prices, carrier performance, and provide legal advice related to charter parties.

CUSTOMS CLEARANCE SUPPORT

Ahlers is a licensed customs broker with 30+ years of expertise. Our in-house specialists handle every step — collecting technical data, completing all documentation, and working with customers and customers' suppliers — to ensure fast, hassle-free customs clearance.



SUSTAINABLE LOGISTICS SOLUTIONS

DASHBOARD REPORTING

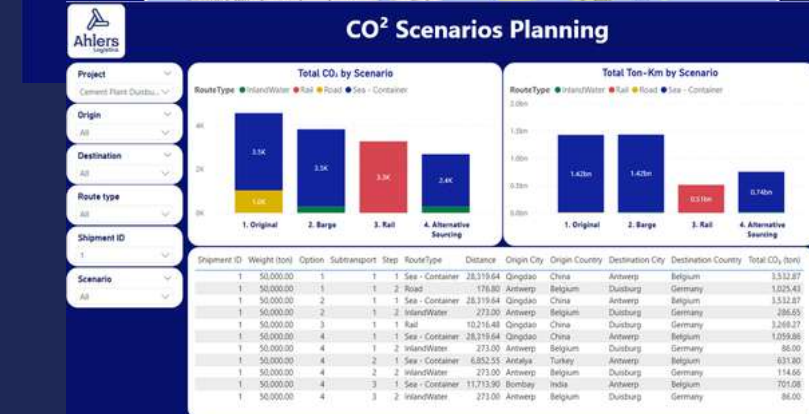
Our customized dashboards provide real-time insights from the TMS, updating daily on cargo, costs, and carbon emissions for sustainable management. Customers can identify patterns, emissions hotspots and be enabled to evaluate their environmental performance to form basis of organizational and ESG reporting and business decision-making.

ROUTE OPTIMIZATION

The in-house calculations also allow our customers to streamline routes and recommend alternative transportation modes, cutting CO2 emissions. We follow the GLEC Framework and ISO 14083 for reporting. We track key metrics like CO₂ emissions and energy use.

ECOVADIS & CDP CERTIFICATIONS

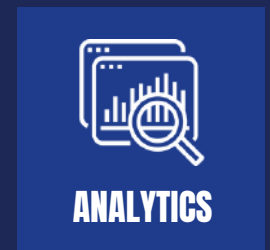
Ahlers holds CDP and EcoVadis certifications, showcasing our commitment to sustainability.





WHY CHOOSE AHLERS?

- 115+ years of delivering results around the world
- End-to-end services that fit your industry needs
- 30+ years of expertise in the complex markets
- Long-term strategic partnerships
- Flexibility & hands-on approach
- High quality and safety standards
- Sustainable logistics solutions



Ahlers





A-Z MANAGEMENT OF COMPLEX GLOBAL PROJECTS
TAILOR-MADE, WITH A CLEAR SCOPE AND DEDICATED TEAM

Ahlers Logistics
HQ Office

Noorderlaan 139
B-2030 Antwerp, Belgium

Phone: +32 3 543 72 11
E-mail: projects@ahlers.com