



Capability Statement



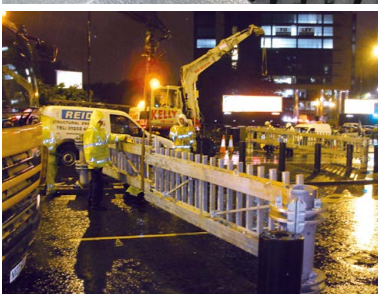
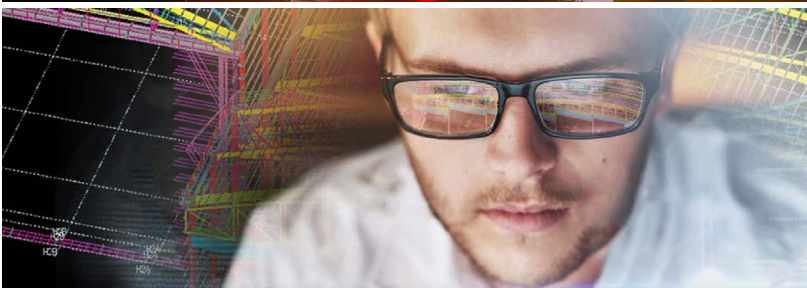
Structural Engineering is at the heart of our business.

Our expertise lies in the complete in-house structural design and fabrication of the full steel frame and envelope.

A safe, value-engineered superstructure.

- Primary Steel
- Secondary Steel
- Tailored Cladding Systems
- Architectural Glazing and Doors
- Vehicle Doors and Hangar Doors

REIDsteel
JOHN REID & SONS (STRUCSTEEL) LTD



An Introduction to REIDsteel.

Contents

An Introduction to REIDsteel	2-3
Project Management	4-5
Structural Design	6-7
Steel, Cladding & Glazing Detailing	8-9
Fabrication	10-11
Shipping & Delivery	12-13
Site / Installation	14-15
Military Work	16-17

Founded in 1919 by Col. John Reid, REIDsteel initially specialised in bespoke aircraft hangars. Since then, we've expanded our expertise to include a wide range of steel structures, from bridges and terminal buildings to Hostile Vehicle Mitigation (HVM) gates.

Our commitment to excellence was recognised in 2022 with the prestigious BCSA Structural Steel Design Award for our work on the twin cantilever hangar at Biggin Hill Airport.

We offer comprehensive services, including design, detailing, fabrication, shipping, and installation of steel frames and associated envelopes, along with in-house architectural glazing systems.

With a proven track record in designing structures that withstand extreme weather events such as hurricanes, tornadoes, and earthquakes, we've earned a strong reputation for stability and safety.

Renowned worldwide, we've successfully delivered projects in over 140 countries, overcoming challenges of location, climate, and logistics.

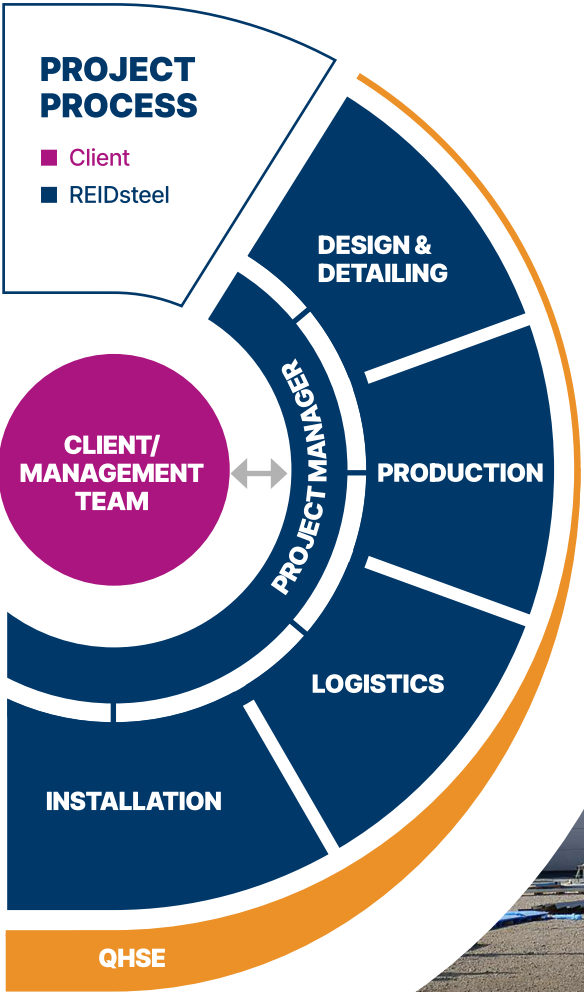




Project Management



At REIDsteel, we believe in being prepared. Our project management team works diligently to ensure the entire business is fully prepared to hit the ground running once a contract has been awarded.





Commitment to Thorough Preparation

Our Project Managers oversee our portion of the contract from inception to completion, ensuring both the programme and budget remain on track. Serving as the main point of contact for the client, they guarantee consistent communication throughout the project's duration.

Proactive Project Management

Our project management team creates and manages the programme, identifying critical deliverables and providing regular updates to key stakeholders. This proactive approach helps to pre-empt potential pinch points throughout the lifecycle of the project and ensures the smooth execution of the project.





Structural Design



*Over A Century of
Excellence in Structural
Engineering – Innovative
Design & Resilience*

A Legacy of Expertise

With over a century of experience, we employ advanced design techniques and programmes to provide comprehensive design solutions. Design development plays a critical role in delivering a project.

By engaging with us early in the lifecycle of a project we can form strong partnerships with the client and other stakeholders, helping us to provide a solution that matches their needs.



Our dual cantilever aircraft hangar design (shown above) won the coveted British Constructional Steel Association Structural Steel Design Award in 2022



Resilient Structures

We can design our structure to withstand diverse environmental conditions, including hurricanes and earthquakes. To help us continuously improve our offering we have also conducted independent full-scale wind tests to help us develop safer, cost-effective structures for high-wind areas.

We can also design structures that are rocket and mortar attack resilient, or protected from hostile vehicles by our HMV gates and dragons teeth barriers.

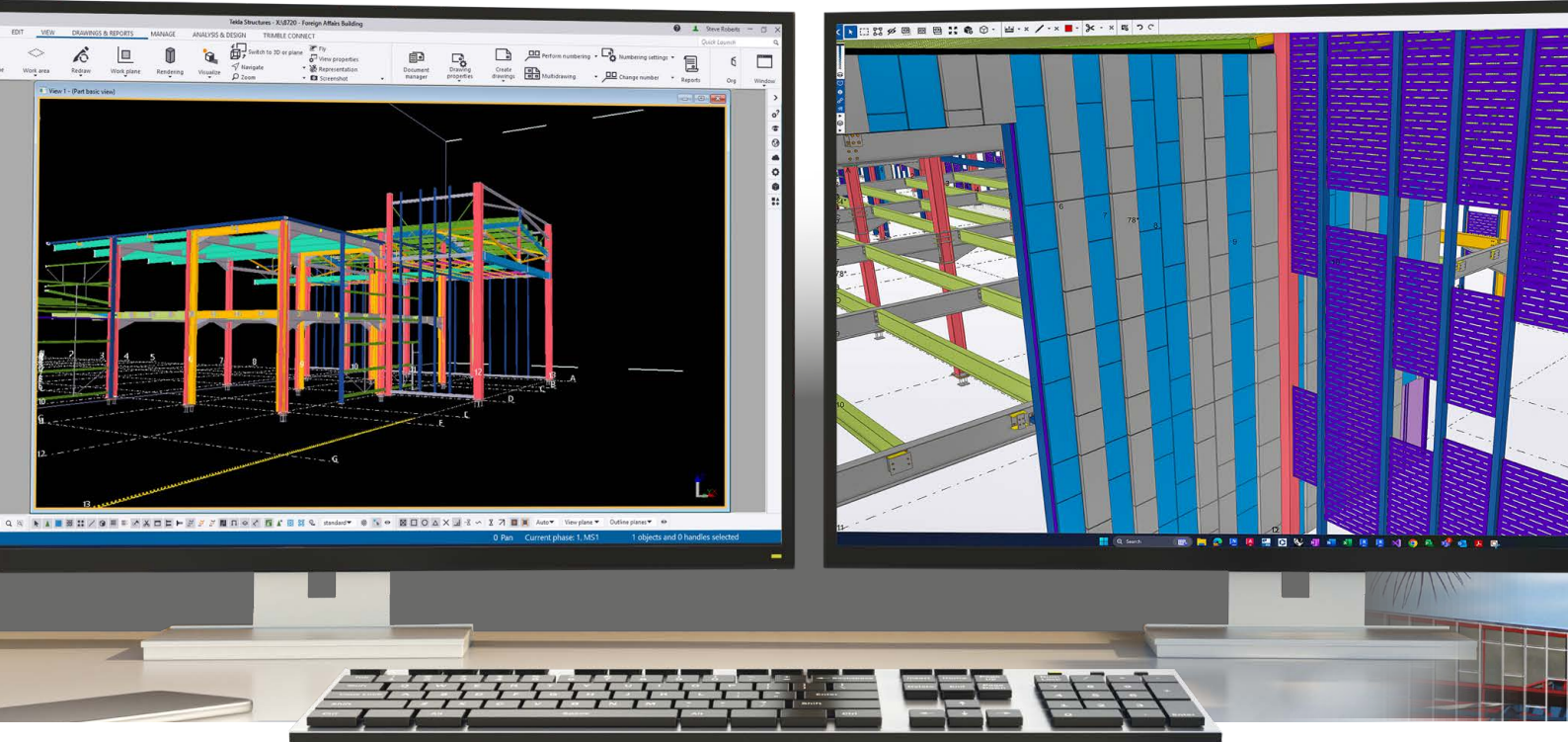


Optimised Design Processes

Our technical team meticulously oversees every detail, ensuring seamless construction. Our global experience in steel shipping has taught us the importance of designing lightweight structures, something that we have become proficient in over the last 100 years. This not only reduces the transport costs but also reduces the foundation loads, creating another cost saving for the client.

Your Sustainable Solution

By making structures lighter, we can also reduce the embodied carbon within a structure, helping our clients achieve their sustainability goals. Trust our legacy of excellence to deliver innovative, resilient and sustainability-focused designs.



Project Detailing



Precision and Collaboration . . .

Detailing the Steel, Cladding and Glazing.

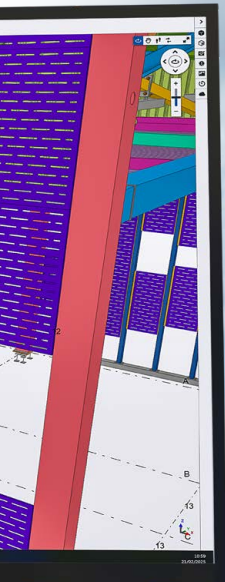


Seamless Teamwork

We collaborate closely with our clients, project managers, and structural engineers, using advanced software to produce detailed steel models. Our global experience spans diverse and complex projects, ensuring our detailers have wealth of knowledge to draw from.

Comprehensive Services

We offer coordinated design and detailing for primary and secondary steel elements, cladding, and glazing. Our CAD models capture every component and connection, integrating seamlessly into external BIM environments.



Integrated Disciplines

Adding our cladding and envelope details directly to the steel detailers 3D models allows for an effective integration of the two disciplines and enables our detailing team to work closely with our fabricators and in-house sheet metal facility to create the guttering systems, decorative sheet metal and façade trims.

Smooth Fabrication

Using the CAD data, we generate fabrication drawings that seamlessly integrate into our production processes. This ensures a smooth transition from the initial tender through to fabrication, inspection, and installation.

Detailed Construction Documentation

We produce construction drawings, detailed site instructions, and 3D models to assist with operational phasing requirements. Our integrated approach also allows us to provide detailed documentation alongside every delivery to site, reducing the time spent looking for a specific part during the installation process and ultimately helping to keep the project in budget and on schedule.

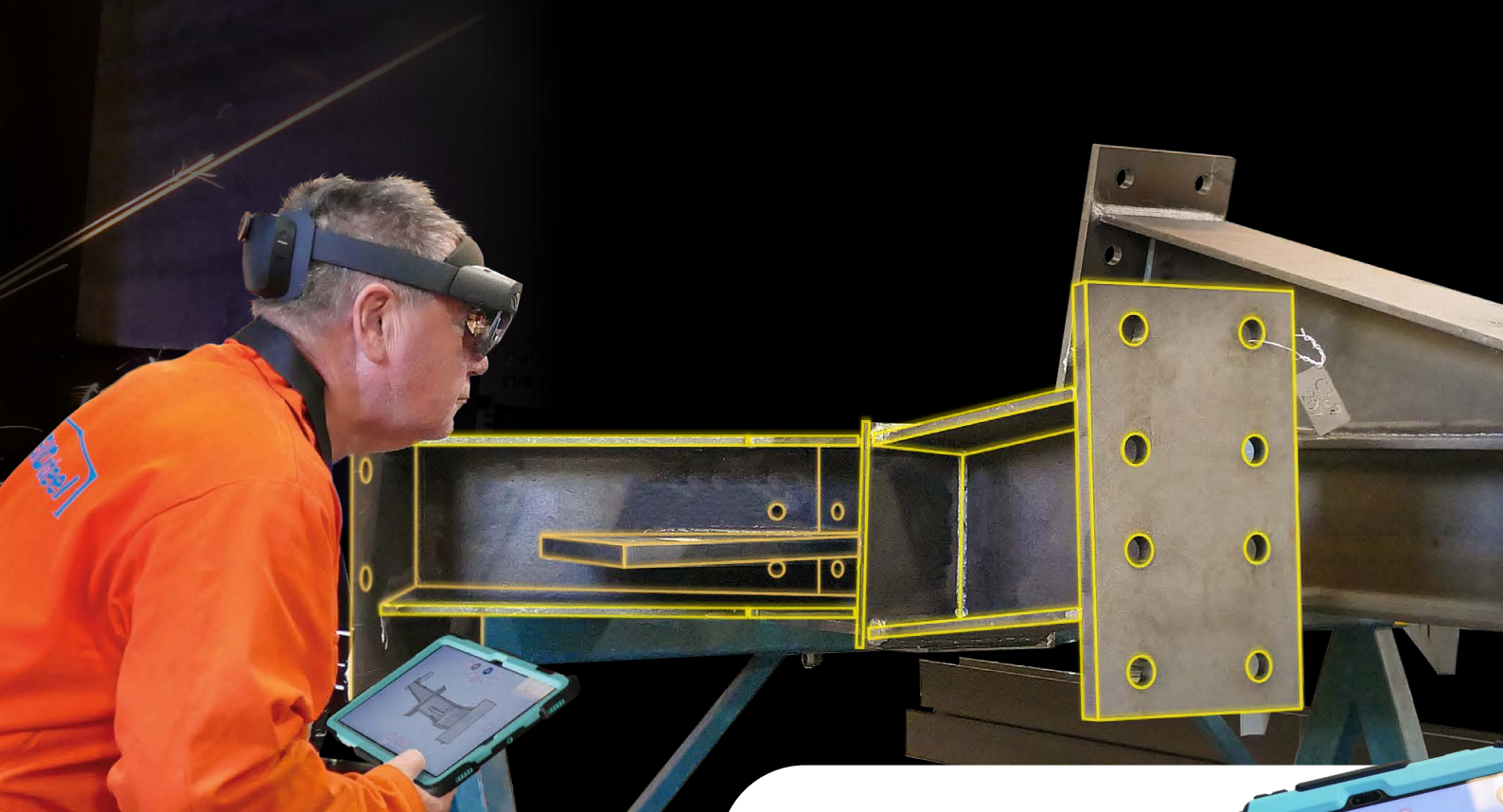


Fabrication



A skilled workforce, CAD & CNC machine integration, traceability, thorough inspections and very high standards are the Cornerstones of Our Fabrication Processes





Traceability

We meticulously track each steel piece back to its original beam and mill of origin. Throughout the fabrication process, we collect data on who worked on each item, the time taken, and the cost, allowing us to continuously improve.

Skills

Our success hinges on our skilled fabrication operatives. We invest heavily in their training, ensuring they are always up to date with the latest techniques and technologies.

Machine Integration

Our CNC machines are fully integrated with our drawing office software, ensuring precise and accurate processing according to the CAD information provided.

Using advanced equipment our Glazing team can also produce stylish and durable aluminium doors and windows with unmatched efficiency and safety.



Inspection

Our in-house inspectors use Hololens AR technology to verify each piece against the CAD model, ensuring nothing is missed. We conduct 100% in-house visual weld inspections and use an external weld inspection service to maintain the highest standards, often exceeding NSSS requirements.

Standards

We hold certifications for BS EN 1090:1 and BS EN 3834:2. Our fabricator welders are certified to BS EN 9606, and we are fully UKCA compliant in execution classes 1-4.

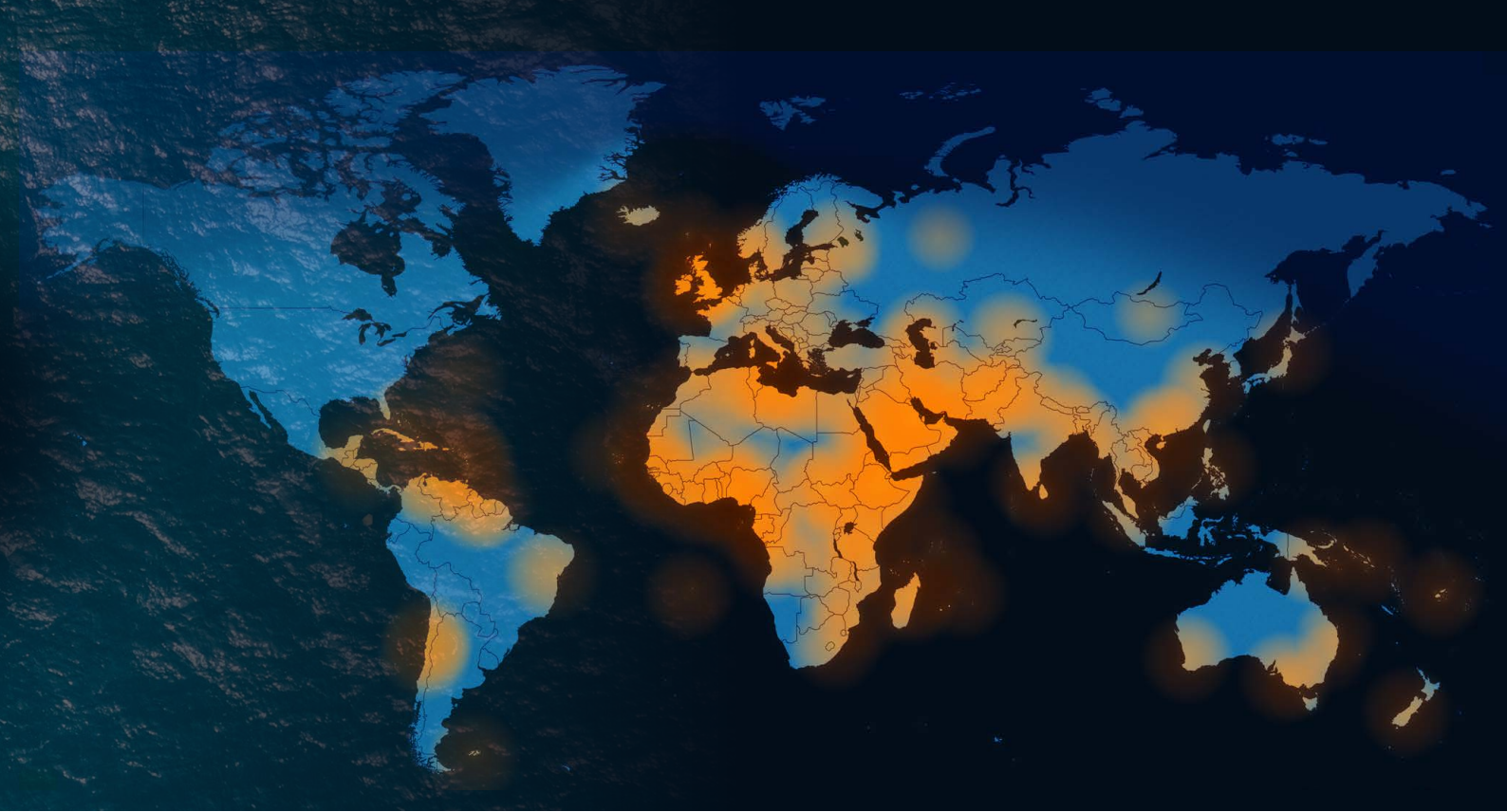


Shipping and Delivery



Whether shipping overseas or delivering within the UK, our projects are meticulously labelled, packed, and loaded to ensure they reach their destination in pristine condition and in a professional manner, complete with all necessary paperwork and tracking information.





Labelling

As part of our detailing process, we assign each part a unique number, which is etched onto the fabricated pieces. Indexes of all items in each crate and container are exported to form the parts lists provided to clients, aiding in the identification of each item. We then link these lists to the erection sequence guide we provide, which includes detailed instructions vital for the safe installation of the structure.

Packing

We have a dedicated crate workshop and in-house packaging team capable of custom-building wooden crates with ISPM15 certified timber. We tailor all our packing to the product being transported, considering both the item and its destination to ensure safe arrival.



UK Delivery

We ensure our deliveries are phased and sequenced in line with construction timetables using modern software that allows us to synchronise our delivery calendar with both clients and site teams seamlessly. We have long-standing relationships with some of the country's leading hauliers and can provide delivery to match our client's specifications, whether that be FORS, RHA, etc.

Export

We are proud to have successfully shipped to over 70% of the world's countries, including remote and locations like Mongolia. Leveraging our extensive network of shipping lines and agents, we ensure timely and efficient delivery to suitable overseas ports. If required, we go the extra mile by arranging transport directly to the site. Our dedicated shipping team meticulously handles all necessary shipping and customs paperwork, providing detailed lists of the contents of each crate and container for a seamless and hassle-free installation process.



Site / Installation



We refuse to compromise on Health & Safety and our QHSE team performs regular site inspections to ensure compliance with both our internal policies and external regulations. All of our sites are carefully controlled by our fully qualified site managers who lead a full installation team for both the steel and cladding elements.

Joanne Robinson, QHSE Manager, REIDsteel



Ensuring Safe and Accurate Installation

We ensure safe and accurate installation with detailed instructions that outline the correct erection sequence for columns and bracing. Our experienced site teams and overseas advisors bring expertise from hundreds of REIDsteel projects, guaranteeing that every project meets the highest standards.

UK Operations

In the UK, our sites are managed by fully trained Site Managers who collaborate closely with project managers to adhere to the program.

Our teams of cladding and steel erectors are thoroughly briefed and prepared, with Health & Safety as our top priority.



Before installation begins, we conduct comprehensive briefings for all Erectors and Site Managers and our QHSE team performs regular site inspections to ensure compliance with internal policies and external regulations.

Overseas Operations



For international projects, we provide advisors to assist local teams, ensuring our high standards are upheld during installation.



Military & Defence Structures



Individually tailored design solutions for governmental, military and commercial clients across the globe.

JSP440 Capability and Quality

Our expertise lies in the design, manufacture, and installation of a wide range of defensive products and structures; from HVM barriers to defensive barracks with mortar resistant roofs. They can be designed for CTM requirements as per the JSP440 Defence Manual of Security Document.

We are proud to be members of the Register of Qualified Steelwork Contractors (RQSC), having submitted to the BCSA's capability and capacity audit. This reflects our excellent technical skills, extensive experience and our commitment to providing an excellent structure for our clients.



A Wide Range of Solutions - Expertise in a wide range of structures designed for, or suitable for, military use

■ **Military Hangars** - We are able to design, fabricate, and install large clear span hangars, suitable for the largest of planes such as the Voyager KC, Globemaster and the Airbus A380

■ **Mortar Resistant Roofing and Rocket Screens** - One of our specialisations is custom-built force protection against a variety of threats, including bomb blast protection and explosion mitigation solutions.

■ **Military Buildings and Bunkers** - We can build, supply, and erect a range of products including defensive barracks, HQ buildings, medical centres, observation posts and workshops. These can be designed to include mortar resistant roofs and rocket screens. We can also manufacture and supply bespoke defence bunkers, designed to suit your individual operational needs

■ **Hostile Vehicle Mitigation (HVM) Gates** -

We initially designed our Dragons Teeth HVM gates for military purposes, specifically to guard against vehicle-borne improvised explosive devices (VBIEDs). Thanks to their unique design, these barriers are perfect for protecting the perimeters of commercial operations with vulnerable boundaries, such as airports or energy and utility sites.

■ **Steel Bridges** - Our experience in bridge construction allows us to deliver long-lasting and reliable solutions tailored to your specific needs. With expertise in handling diverse geographical and climatic conditions, we ensure each project is executed with precision, efficiency, and safety. As a result, we can help to provide reliable connectivity and enhance infrastructure across the globe.



Capability Statement

REIDsteel

JOHN REID & SONS (STRUCSTEEL) LTD

3 Reid Street, Christchurch,

Dorset BH23 2BT England

T: + 44 (0) 1202 48 33 33

E: sales@reidsteel.co.uk

W: www.REIDsteel.com



FULLY UKCA COMPLIANT FOR EXECUTION CLASSES 1 TO 4 • ISO 9001:2015 • ISO 14001:2015 • BS EN ISO 45001:2018 • BS EN ISO 3834-2:2021
JOHN REID & SONS (STRUCSTEEL) LTD trading as REIDsteel & REIDglazing • Company Registration No: 617773

Reference	Revision
G39	a

Output Date
22-Feb-2025