

We make simulations **accessible**



problem

The human, environmental and economic cost of climate change is **catastrophic**.
Our cities are the forefronts of the climate crisis.

+1.55°C

warmest year on record
(WMO)

Heat Wave Montreal, Canada, US – © AFP/GETTY

\$16M

cost per hour
(World Economic Forum)

Flood in Rhineland-Palatinate, Germany – © CNN

170K

heat-related deaths
(WHO Europe)

Hurricane Irma, US – © SatoshiKina

70% of the population will live in cities by 2050.
By then, we need to build 13K buildings per day.
Buildings are the largest contributors to climate change.

We need to understand the **impact of our
buildings on the climate.**

70%

in cities by 2050

13K

buildings per day

37%

GHG emissions

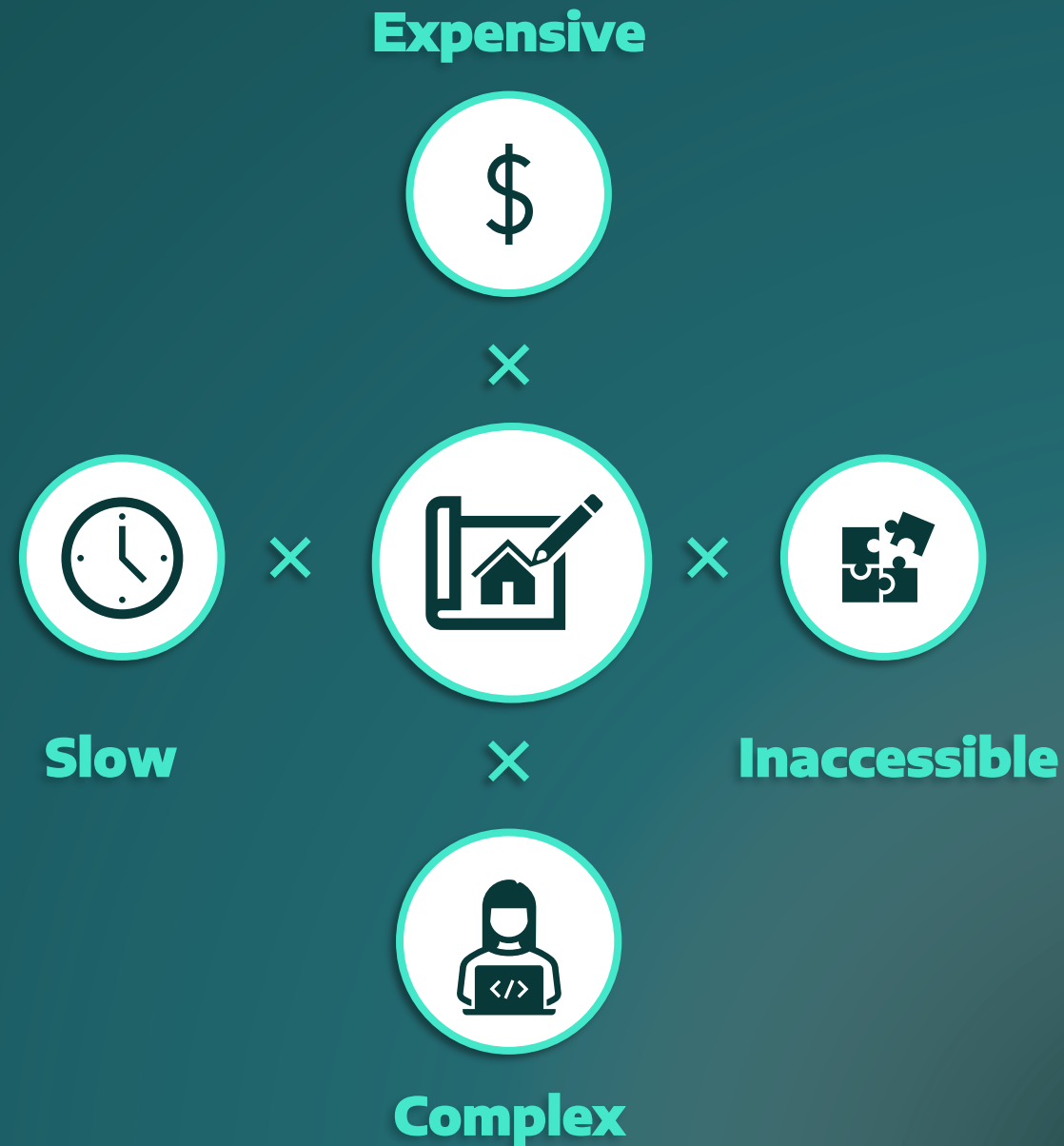
Climate informed design

To ensure that a building has a net positive impact, **climate simulations** are essential to inform its design and optimize its performance.



Democratizing access to data

infrared.city removes the most common blockers and **democratizes** the integration of environmental simulations as a driver for **climate informed design**



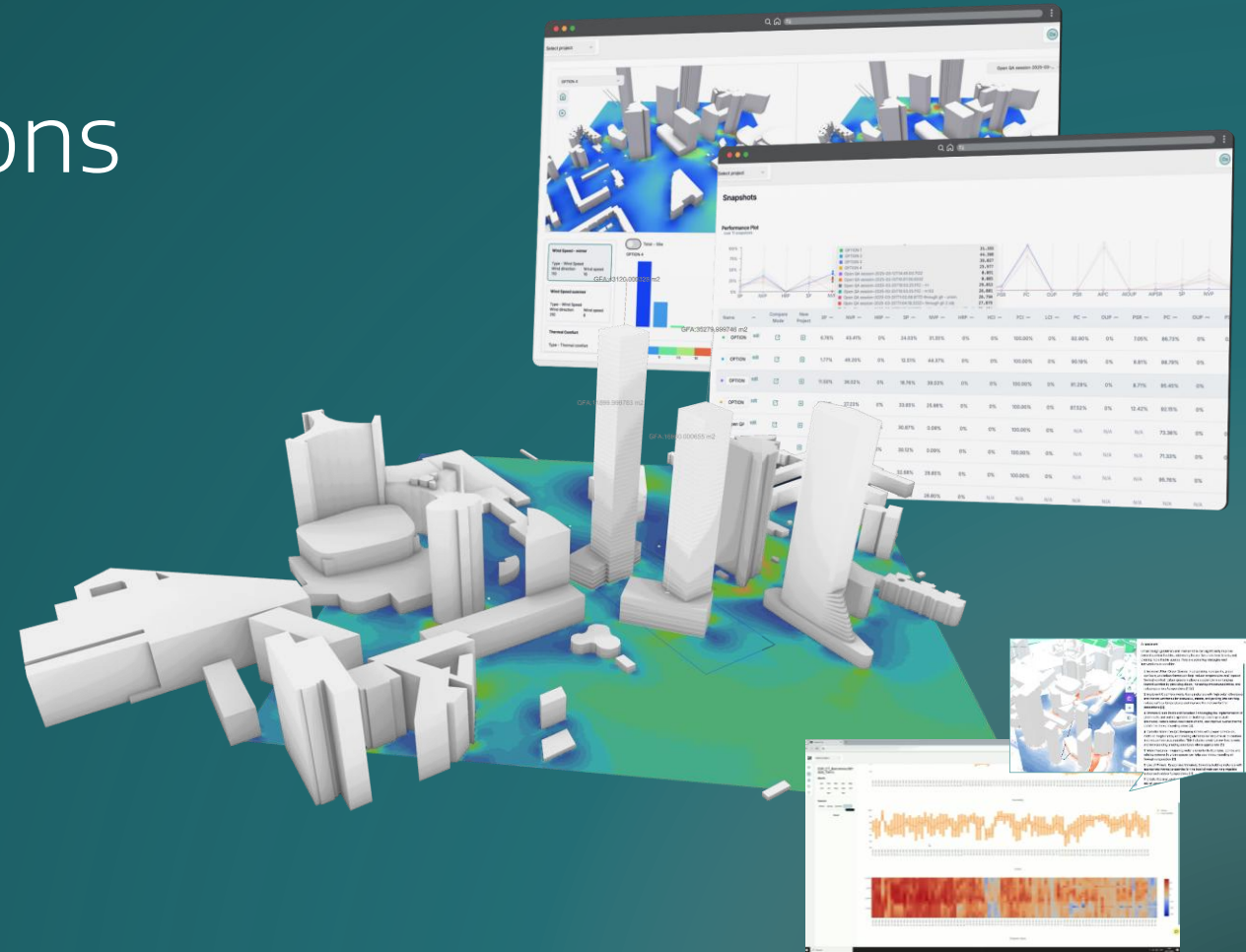
solution

infrared.city

We make climate simulations accessible

infrared.city is a platform for intelligent and resilient design **powered by AI**.

We make complex environmental simulations
accessible right within your design workflow.



infrared.city uses AI to predict
simulation **results in real time**

Typical CFD simulation (wind comfort):

Pre-Processing

Meshing

Simulation

Post-Processing

3 days, 1 expert, 10K€



infrared.city AI (wind comfort):



1 sec, 1€

Our models predict
climate simulations with

>90%
accuracy for

<0.1%
of the cost



Typical annual
solar radiation

30 min

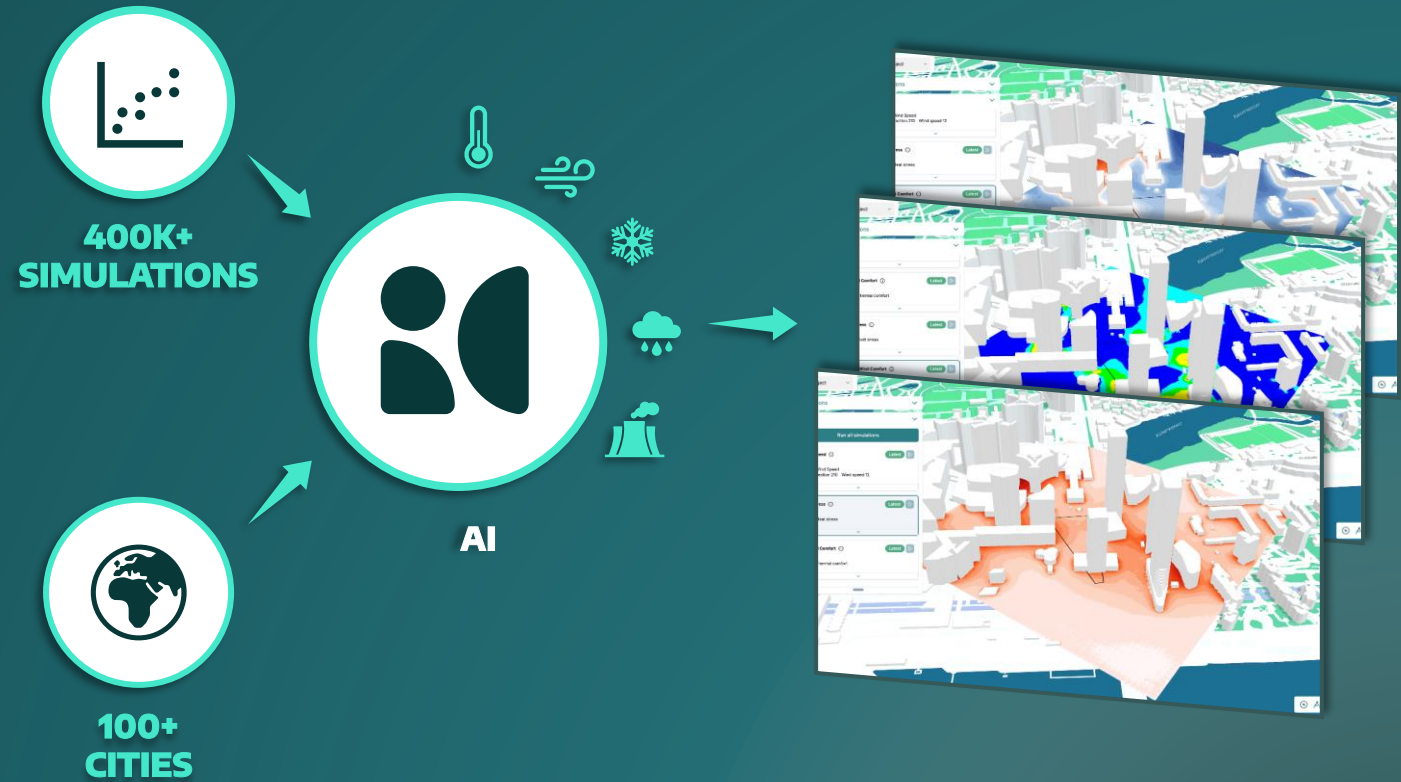


infrared.city AI-driven
annual solar radiation

1 sec

Accurate, real-time AI models

infrared.city's proprietary
Deep Learning models are trained on
large simulation **datasets** capturing all
types of buildings and cities.



Comprehensive simulations service

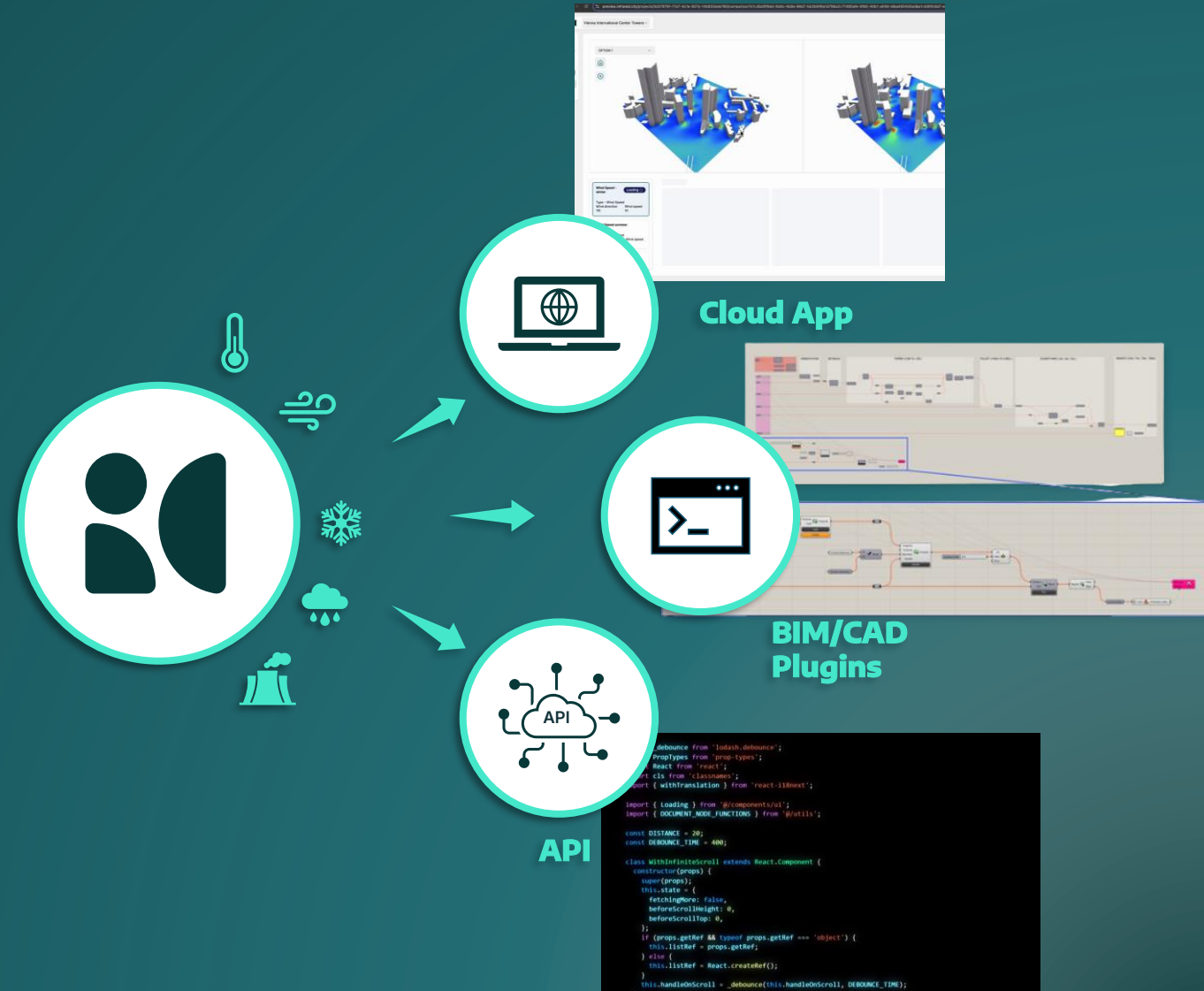
Our models predict **key simulations** required for **resilient design**.

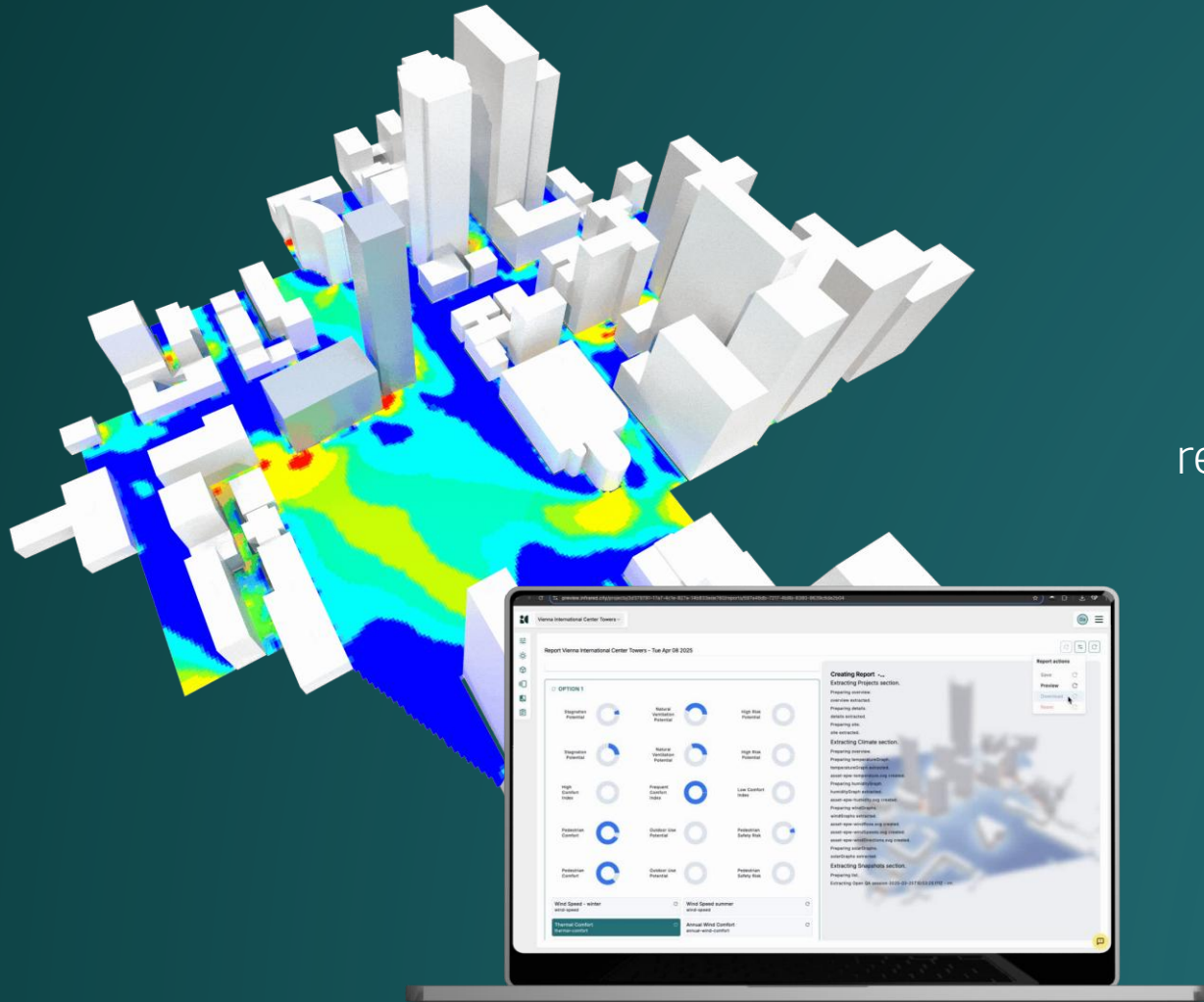
We can deliver **instant** simulation results on wind, solar and thermal and we are continuously expanding our range to offer a **global view** of **climate resilience index**.



Open integration approach

An open ended tech stack to serve simulation to all users, through our web app, BIM & CAD plugins and our open API.





Interactive and Intuitive AI design assistance

Our AI agents transform complex simulation results to **simple KPIs** and **actionable insights** delivering **transparent automated reports** that can be instantly generated.

Personal

Perfect for individuals, with the essentials

50€

cancel any time

Extra AI Credits:
0€

Total AI Credits 1000
0 extra AI Credits

Seats:

One seat included in plan

Need more seats? Checkout the **Team** and **Pro** plan!

Subscribe

14 days of free trial.

✓ AI Credits/month:	1000
✓ Concurrent Active Projects:	3
✓ Chatbot rates:	TBD
✓ Simulation Models:	all
✓ AI assistant:	Yes
✓ Connectors to CAD/BIM software:	Yes
✓ Support:	72h email support

Team

Great for small teams, with collaborative tools

250€

cancel any time

Extra AI Credits:
0€

Total AI Credits 5000
0 extra AI Credits

Seats:

0€

First seat included in plan

Subscribe

✓ AI Credits/month:	5000
✓ Concurrent Active Projects:	20
✓ Chatbot rates:	TBD
✓ Simulation Models:	all
✓ AI assistant:	Yes
✓ Connectors to CAD/BIM software:	Yes
✓ Shared Projects:	Yes
✓ Reporting Tools:	Yes (soon)
✓ Shareable Viewer:	Yes (soon)
✓ New Location Request:	Standard
✓ Support:	Priority email support

Pro

Best for businesses

Designed for small to medium businesses, with full features

500€

cancel any time

Extra AI Credits:
0€

Total AI Credits 10000
0 extra AI Credits

Seats:

0€

First seat included in plan

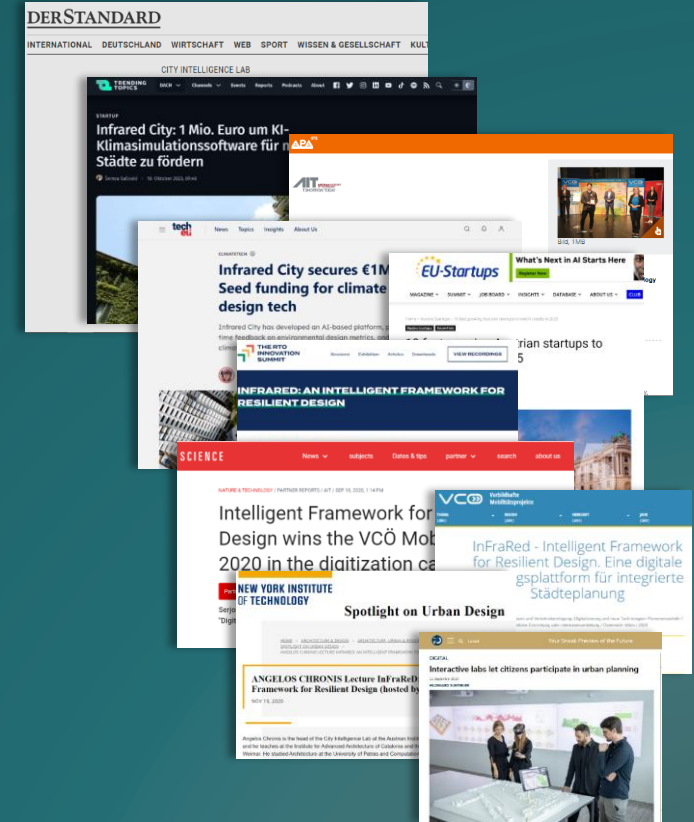
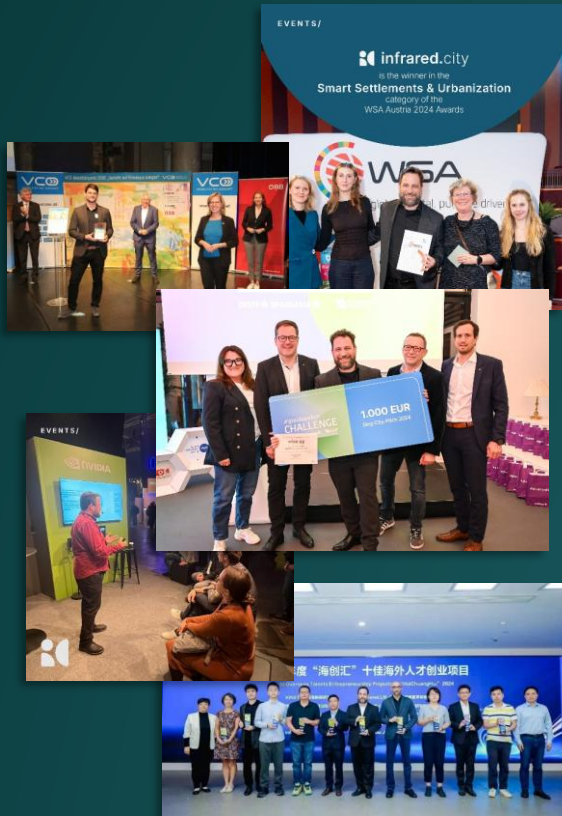
Subscribe

✓ AI Credits/month:	10000
✓ Concurrent Active Projects:	50
✓ Chatbot rates:	TBD
✓ Simulation Models:	all
✓ AI assistant:	Yes
✓ Connectors to CAD/BIM software:	Yes
✓ Shared Projects:	Yes
✓ Reporting Tools:	Yes (soon)
✓ Shareable Viewer:	Yes (soon)
✓ New Location Request:	
✓ Custom model deployment:	
✓ API access:	
✓ Support:	

Enterprise

Customized development and private deployment.

Contact Us



10+
Awards



30+
Publications



100+
News Articles

traction

 infrared.city



500+
Active Users

Zaha Hadid
Architects

Foster + Partners

LINK ARKITEKTUR

H&dM

KPF

white

KCAP

SvN Architects
+ Planners

SOM

LAND

AS+P

DREES &
SOMMER

hcu HafenCity
Universität
Hamburg

ARUP

BURO HAPPOLD

ilf
CONSULTING
ENGINEERS

HPA
Hamburg Port Authority



4 Software
Integrations

R **AUTODESK**
Revit



HYPAR

 **Giraffe**



10+
Universities

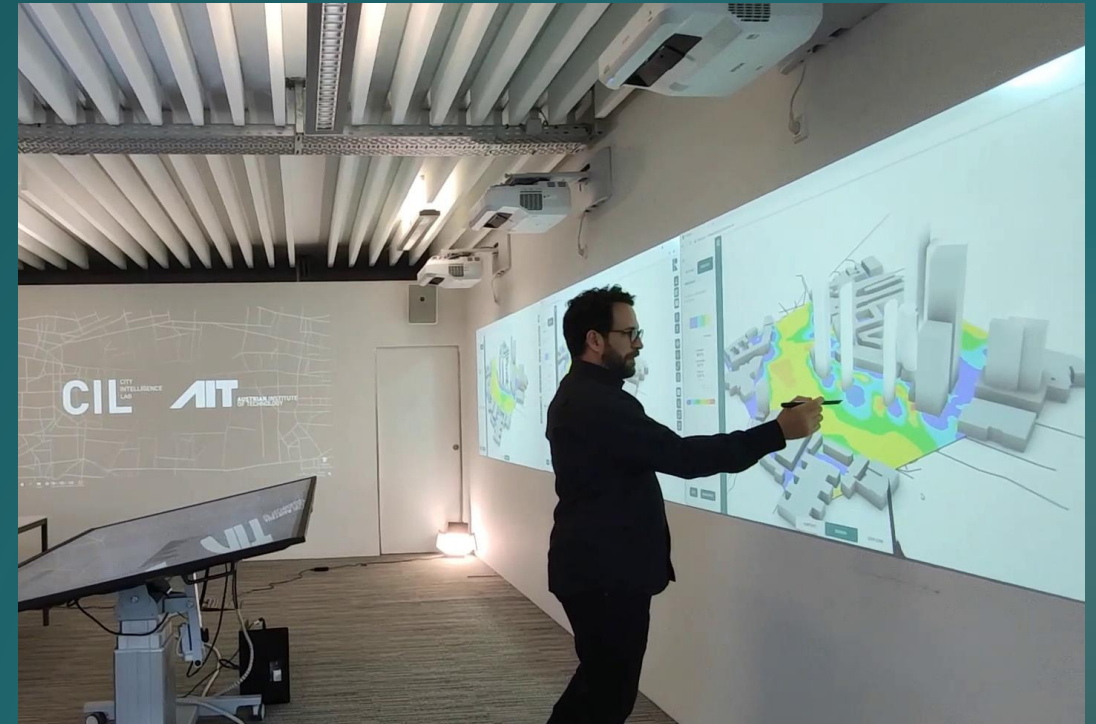
 **Berkeley**
UNIVERSITY OF CALIFORNIA

**Bauhaus-
Universität
Weimar**

**NEW YORK INSTITUTE
OF TECHNOLOGY**

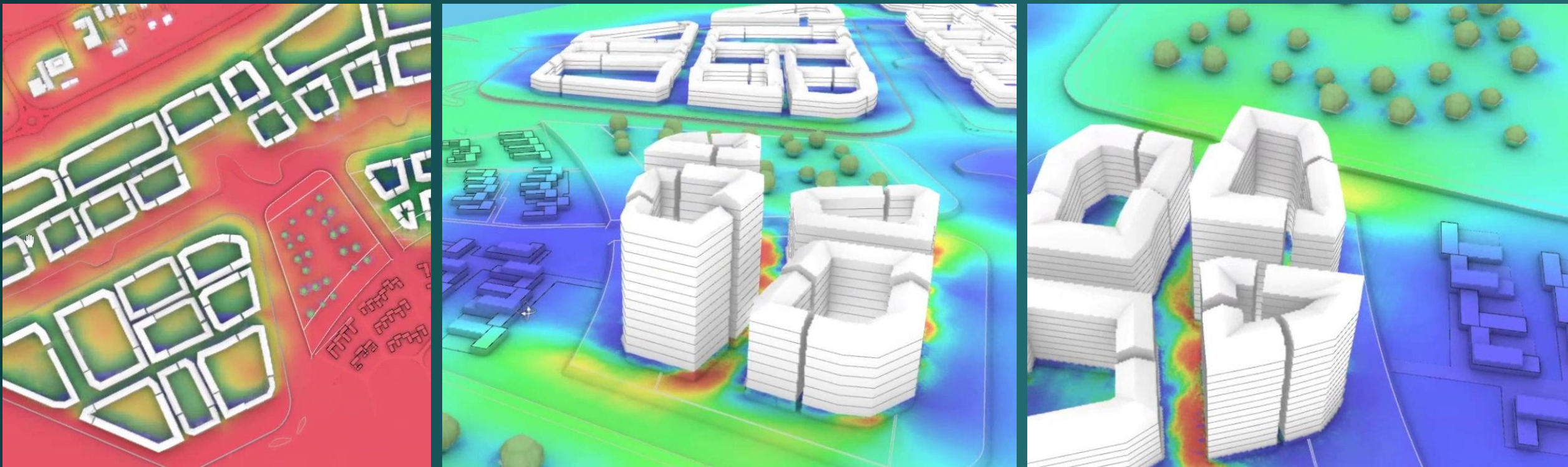
Iaac Institute for
advanced
architecture
of Catalonia

**Green.
Building.
Solutions.**



infrared.city is actively used at the City Intelligence Lab of the Austrian Institute of Technology

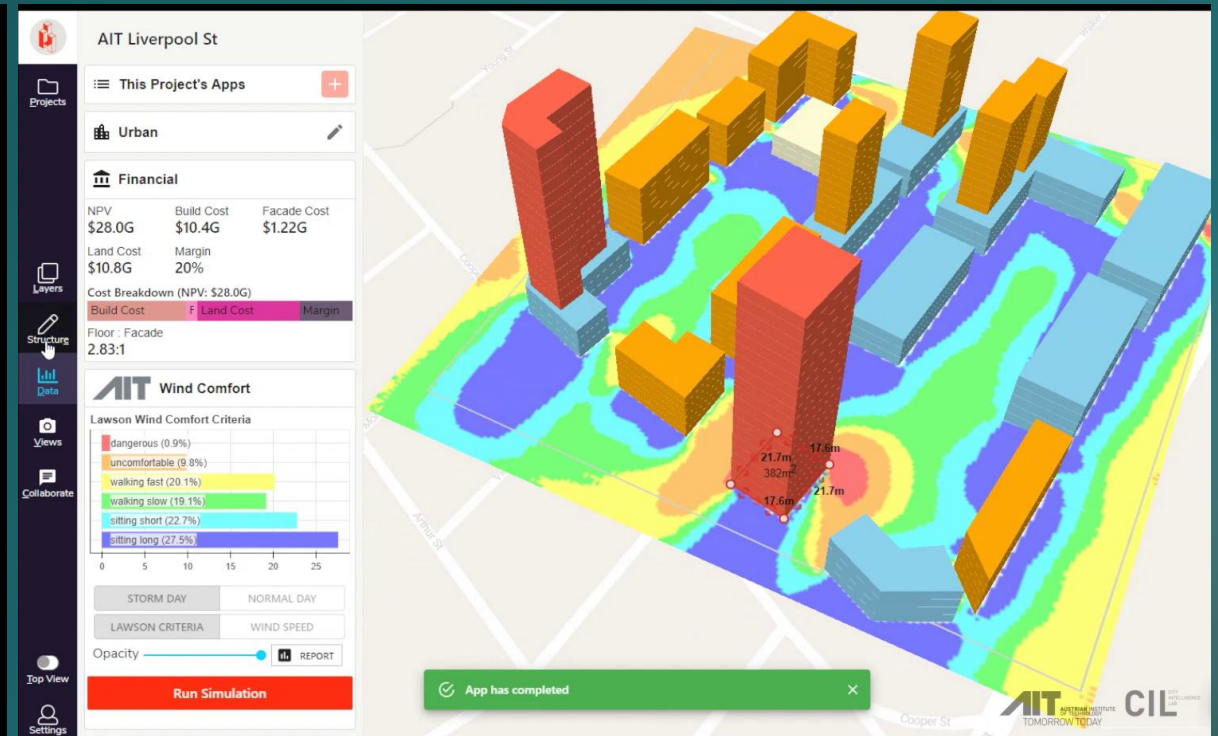
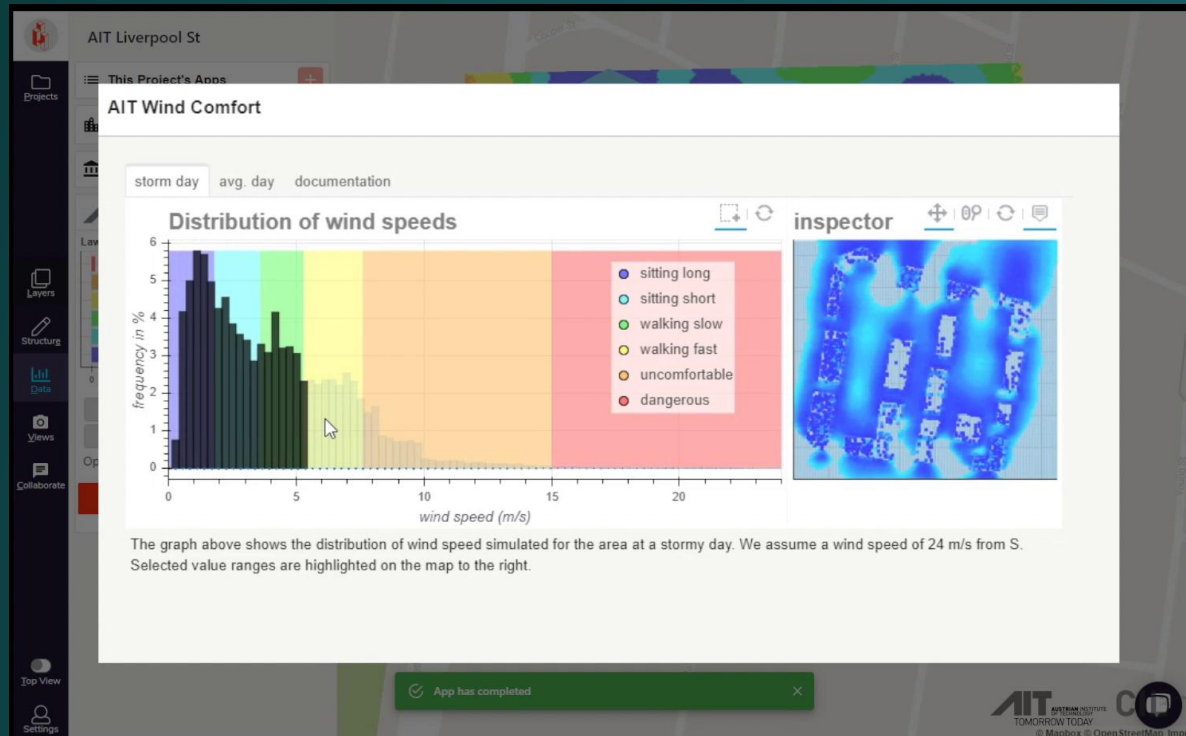
LINK Arkitektur



Microclimate studies included in a custom generative massing platform designed in collaboration with LINK Arkitektur



Giraffe



infrared.city deployed in Giraffe, a well-known urban design and planning platform



infrared.city API deployed in COUP (Cockpit for Collaborative Urban Planning), developed by HafenCity Hamburg GmbH in collaboration with MIT Media Lab



**Angelos
Chronis**
CEO



**Oana
Taut**
CPO



**Christos
Chatzakis**
CTO



**Theodoros
Galanos**
CSO

**Leading AEC
innovation for
10+ years**



**Eduardo
Martinez**
**Software
Developer**



**Vasiliki
Fragkia**
**Environmental
Engineer**



**Kaushik
Sampathraj**
**Computational
Designer**



**Ruben
Rodriguez**
**Software
Developer**



**Alessandro
Grossi**
**Environmental
Engineer**



**Vassilis
Kalampogias**
**Community
Manager**



Let's revolutionize simulation!

