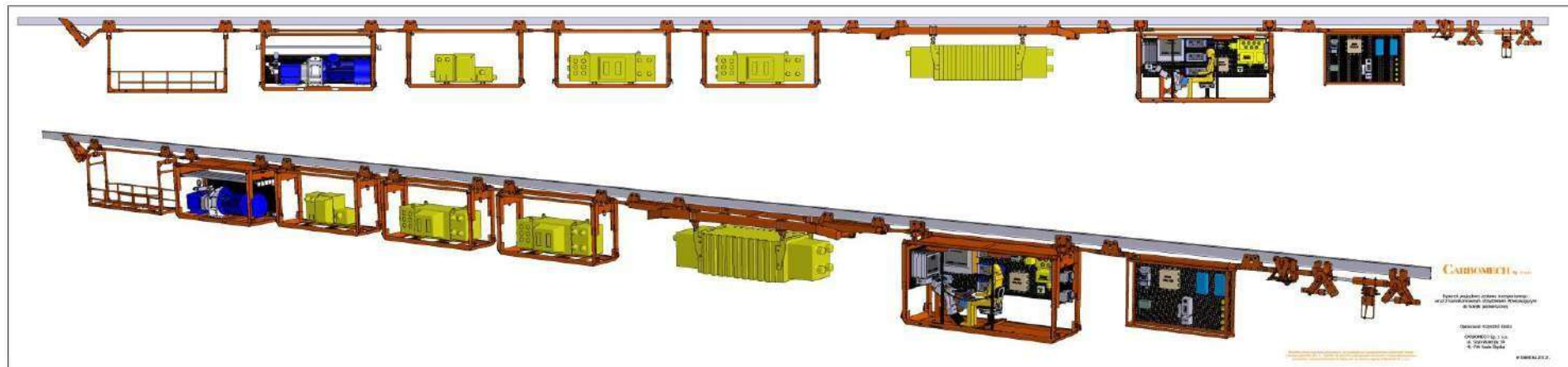


CARBOMECH

Company Presentation





Company Presentation

Carbomech Ltd. was established in 1993 by owners of German company B+N, which has seat near Dortmund.

Carbomech Ltd. has seat in Ruda Śląska, Poland.



Main activity

Main activity:

1. Transportation sets shifted on suspended rails.
2. Transportation sets shifted on floor rails.

Main activity

Main economic activity of Carbomech is designing and production of transportation sets for shifting equipment such as:

- electric equipment,
- dust removal devices,
- cooling equipment,
- other machines and devices which are part of longwall and heading systems.

**Designing a
transportation
set**

Main conditions and data in designing transportation set:

- geological terms,
- heading size,
- shifted equipment,
- transportation infrastructure.

**Electric
equipment**

Power switch

Mostly transported electric equipment:



Power switch on pallet type 1-488 (load capacity 1000kg)
in PG Silesia, Katowice.

**Electric
equipment**

**Compact
station**

Mostly transportated electric equipment:



Compact station on pallet type 20-316 (load capacity 3000kg) in KWK Marcel-Marklowice, Radlin.

CARBOMECH

**Electric
equipment**

**Frequency
Inverter**

Mostly transportated electric equipment:



Frequency inverter on pallet type 20-316 (load capacity 3000kg).

Carbomech Sp. z o.o.

**Electric
equipment**

Transformer

Mostly transportated electric equipment:



Transformer on double-carriage set type 20-60.4 (load capacity 11980kg) in KWK Zofiówka, Jastrzębie-Zdrój.

**Electric
equipment**

Transformer

Mostly transportated electric equipment:



Transformer on frame type 20-325 (load capacity 10600kg) in KWK Staszic, Katowice.

**Electric
equipment**

Transformer

Mostly transportated electric equipment:



Transformer on carriages with extension arm type 20-364
(load capacity 2x4000kg) in KWK Bobrek, Bytom.

**Electric
equipment**

**Steering and
visualization
Cabin**

Mostly transportated electric equipment:



**Steering and visualization Cabin in KWK Zofiówka,
Jastrzębie-Zdrój.**

**Other
equipment**

**Hydraulic
pumps**

Other equipment:



Hydraulic pump in Wichary Technologies, Pyrzowice.

**Other
equipment**

Hydraulic tank

Other equipment:



Hydraulic tank in Wichary Technologies, Pyrzowice.

**Other
equipment**

**Hydraulic
filters**

Other equipment:



Hydraulic filters in Wichary Technologies, Pyrzowice.

**Other
equipment**

**Dust removal
device**

Other equipment:



Dust removal device on carriages with extension arm type 20-364 (load capacity 2x4000kg) in ZG Sobieski, Jaworzno.

Carbomech Sp. z o.o.

Self-breaking shifting device



Self-breaking shifting device in KWK Zofiówka, Jastrzębie-Zdrój.

Self-breaking shifting device type 20-101

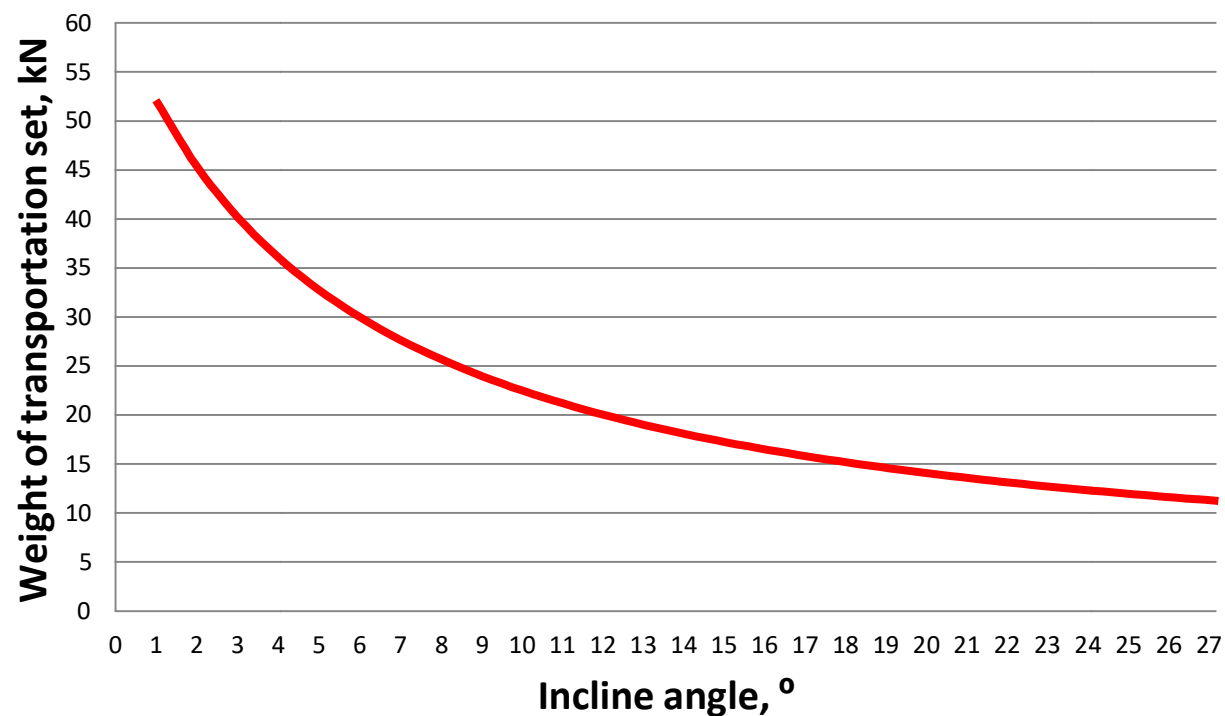


Chart 1 - weight of transportation set to heading incline angle ratio.

Self-breaking shifting device type 11-101

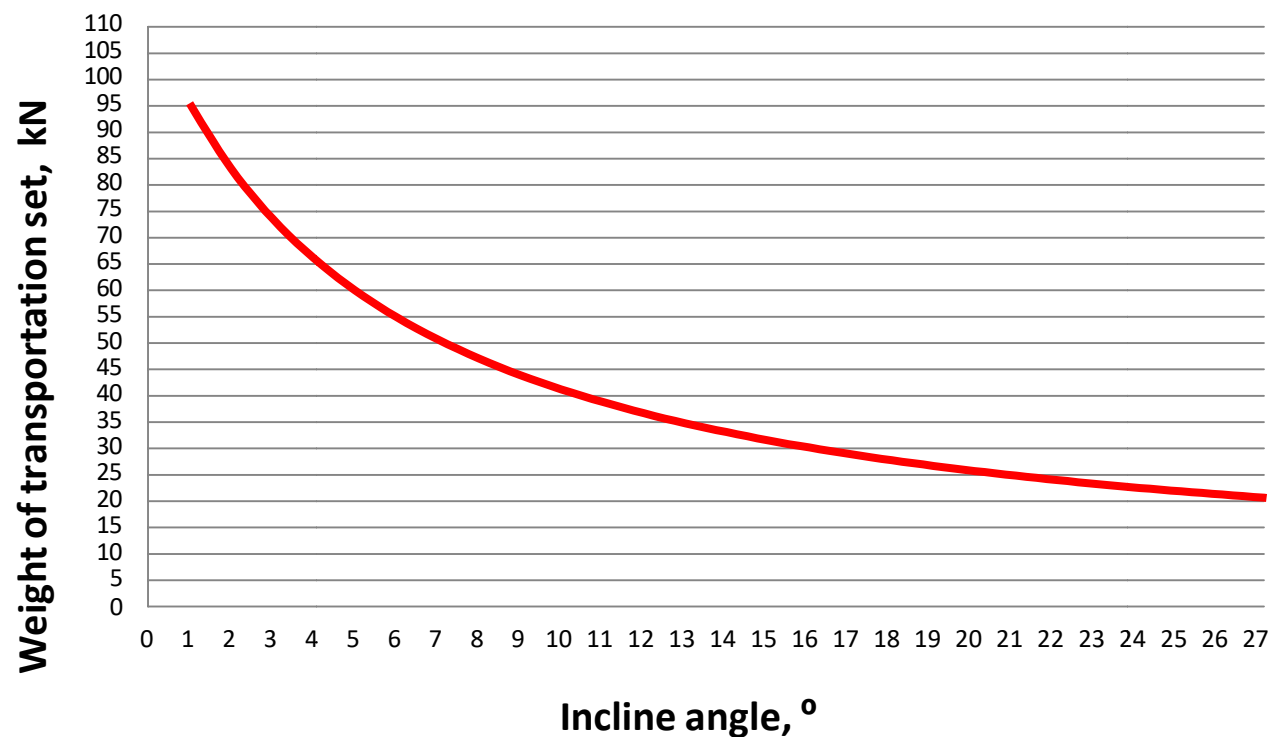
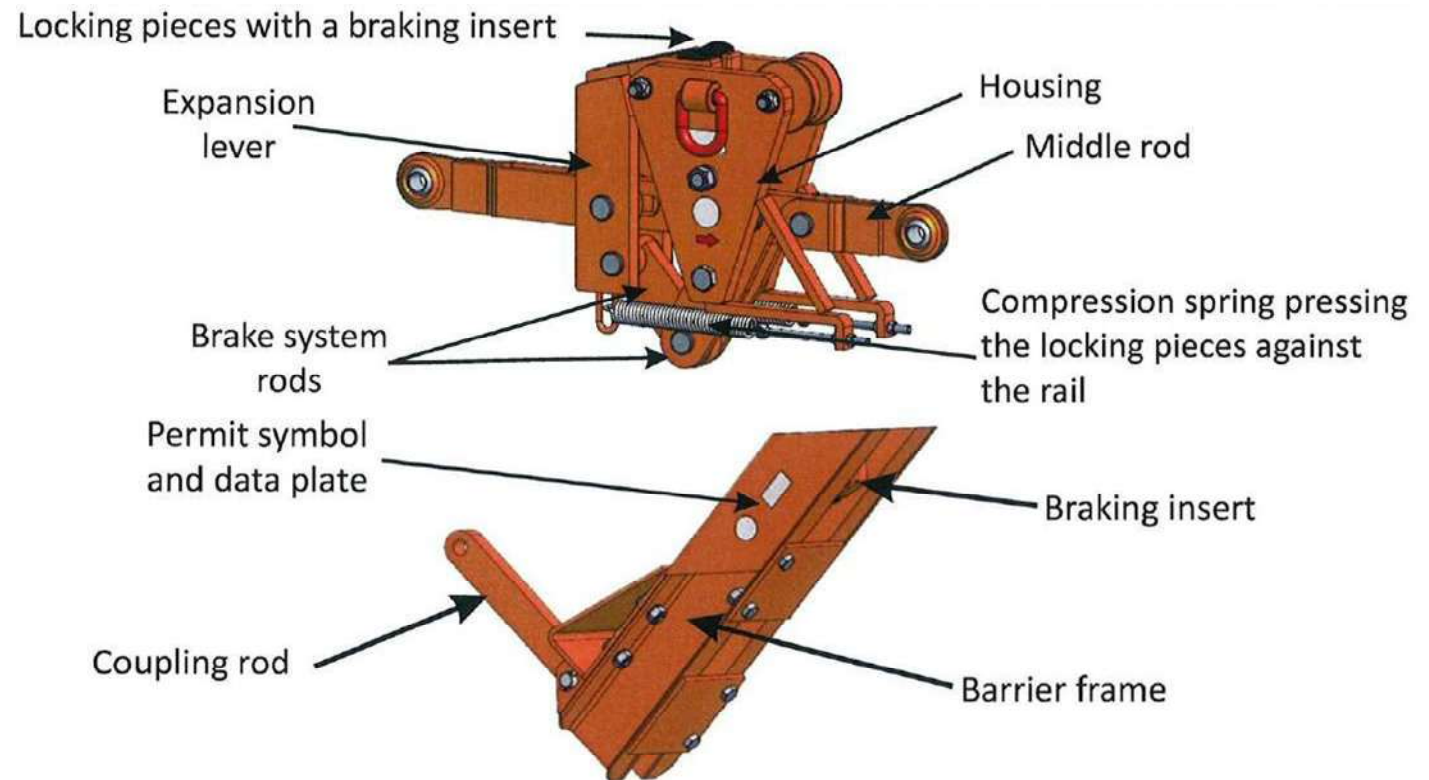


Chart 2 - weight of transportation set to heading incline angle ratio.

**Shifting
transportation
set**

Barriers

Barriers



Front and rear barrier.

**Shifting
transportation
set**

Front barrier

Front barrier



Front barrier installed in transporation set in KWK
Zofiówka, Jastrzębie-Zdrój.

**Shifting
transportation
set**

Rear barrier

Rear barrier



Rear barrier installed in transportation set in KWK Staszic,
Katowice.

**Additional
equipment**

**Equipment
suspension
gear**

Additional equipment



Equipment suspension gear.

**Additional
equipment**

Cabinet

Additional equipment

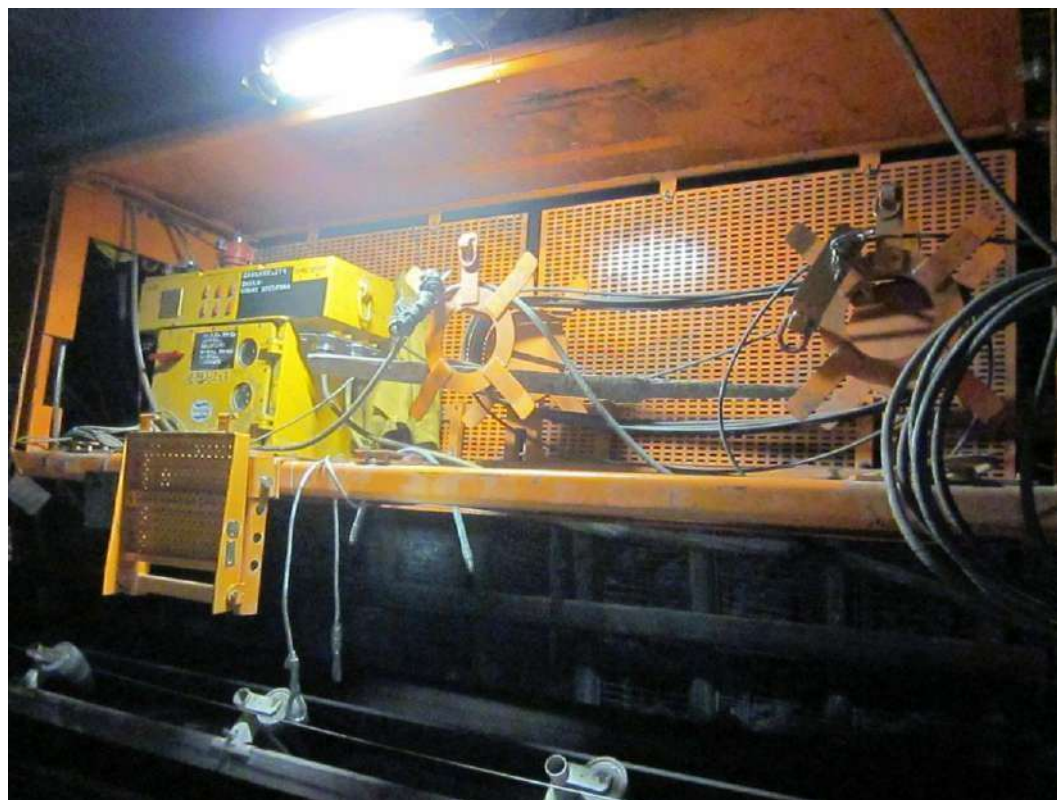


Cabinet.

**Additional
equipment**

**Device for light
pipe
accumulation**

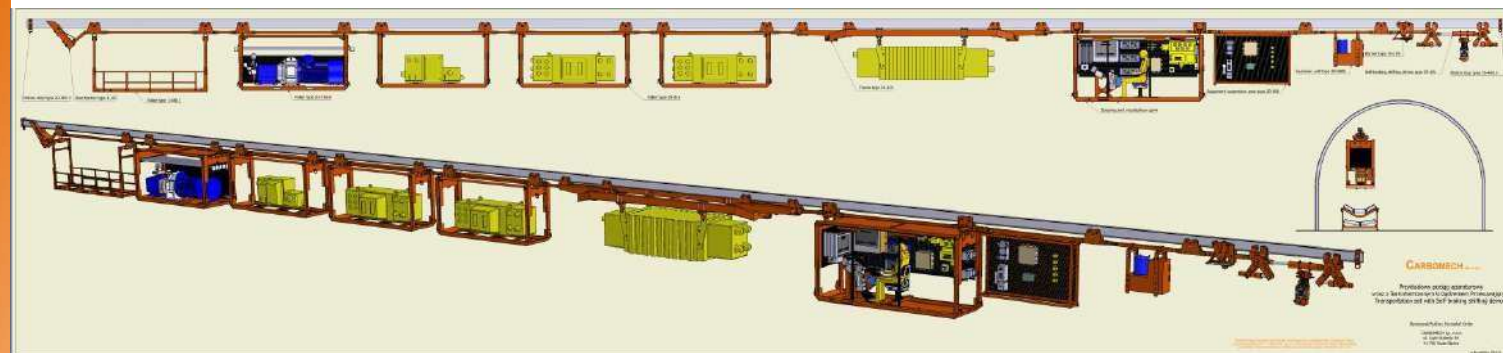
Additional equipment



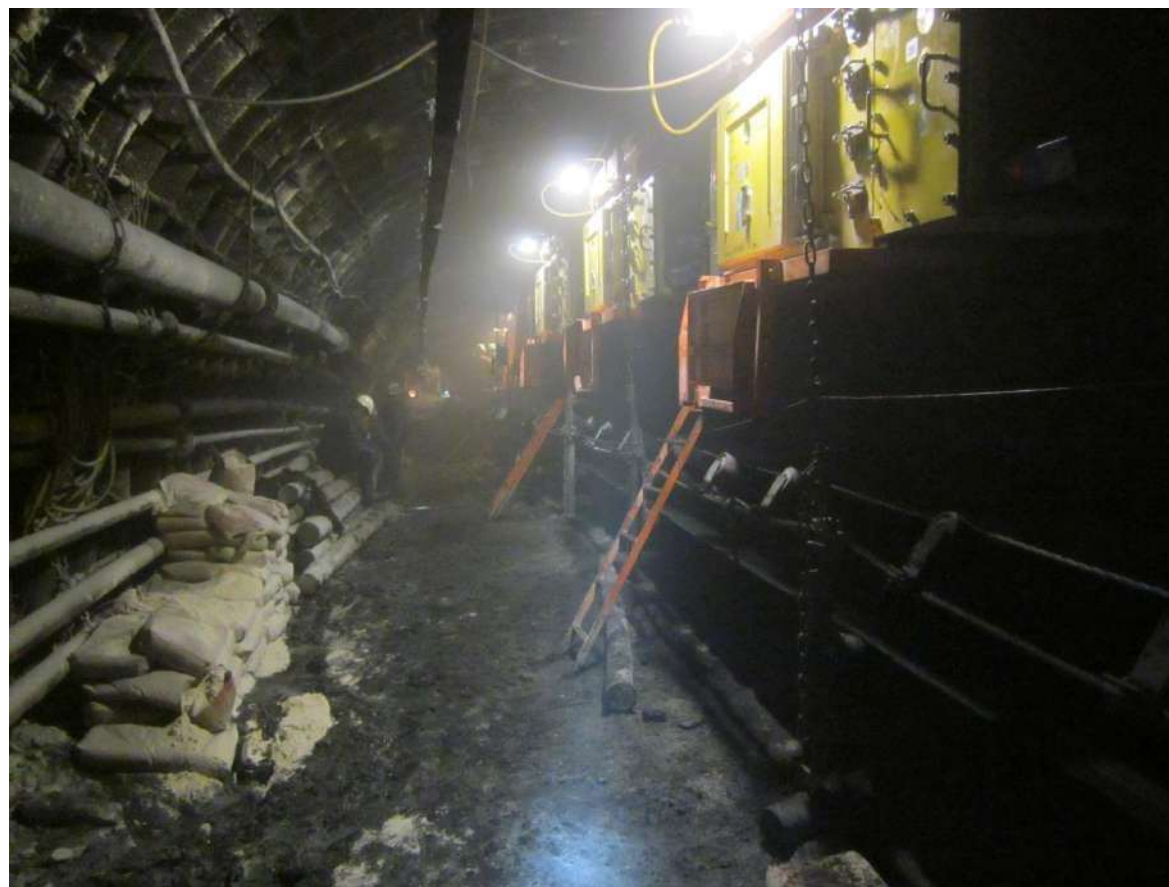
Pallet with device for light pipe accumulation.

Transportation set

Transportation set



Transportation set



Transportation set



CARBOMECH

**Transportation
set**

Realizations

KWK Pniówek

Transportation set



Carbomech Sp. z o.o.

CARBOMECH

**Transportation
set**

Realizations

Kopex

Transportation set



Carbomech Sp. z o.o.

CARBOMECH

**Transportation
set**

Realizations

PG Silesia

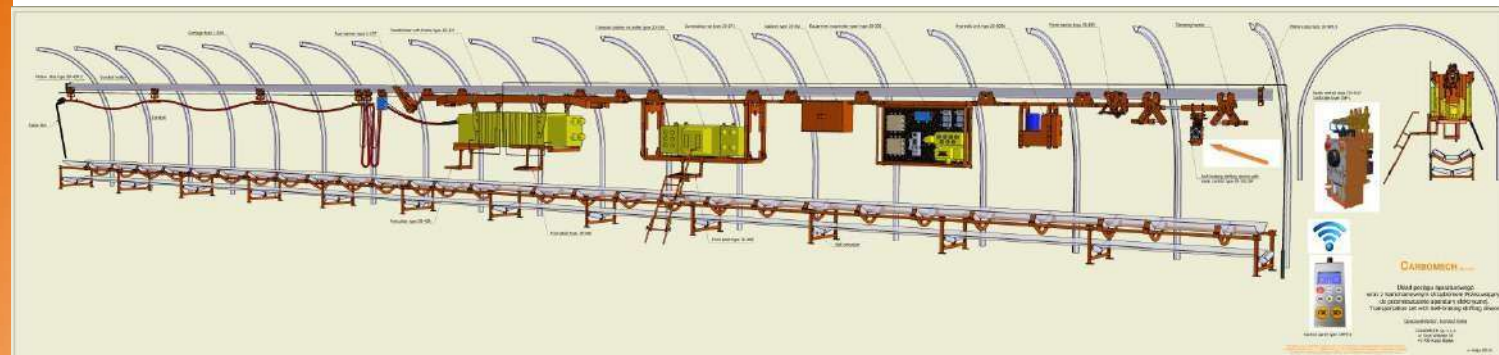
Transportation set



Carbomech Sp. z o.o.

Transportation set with conduit compensation

Transportation set with conduit compensation



**Transportation
set with conduit
compensation**

**Underslung
conduits**

Transportation set with conduit compensation



Carriage with conduits holder which provide appropriate bend radius in KWK Zofiówka, Jastrzębie-Zdrój.

**Transportation
set with conduit
compensation**

**Underslung
conduits**

Transportation set with conduit compensation



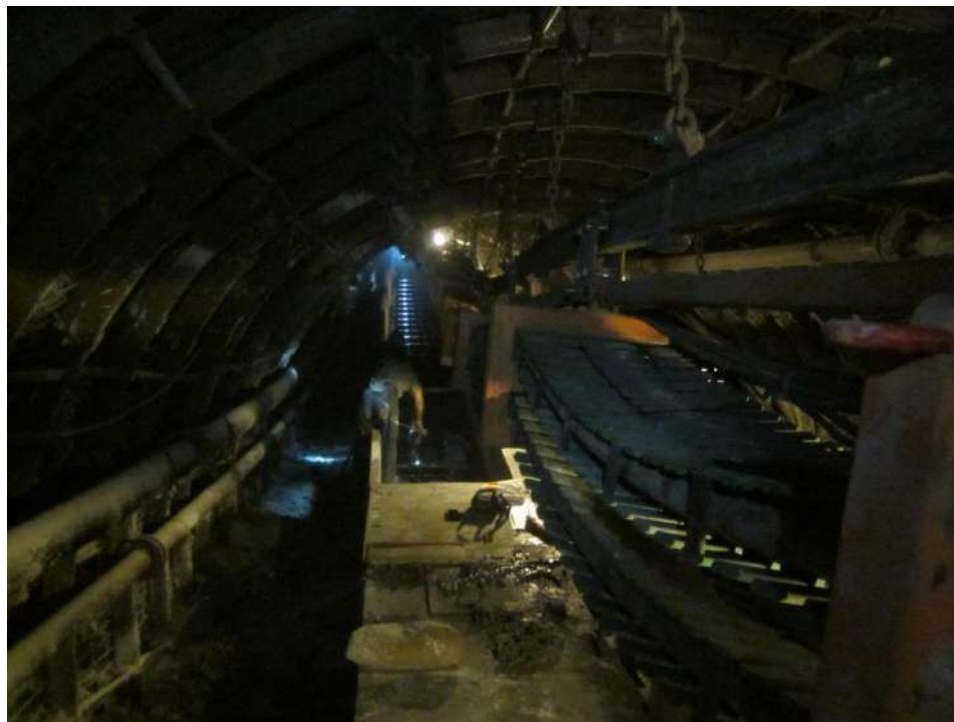
Carriage with partial cable layer and bumpers which are preventing conduits from mechanical damage in KWK Zofiówka, Jastrzębie-Zdrój.

Carbomech Sp. z o.o.

Transportation set with conduit compensation

Underslung conduits

Transportation set with conduit compensation



Carriages with cable layer holders and cable layers which are preventing conduits from mechanical damage in KWK Zofiówka, Jastrzębie-Zdrój.

Carbomech Sp. z o.o.

**Transportation
set with conduit
compensation**

**Underslung
conduits**

Transportation set with conduit compensation



Carriages with cable layer holders and cable layers which are preventing conduits from mechanical damage in KWK Zofiówka, Jastrzębie-Zdrój.

Carbomech Sp. z o.o.

**Transportation
set with conduit
compensation**

**Pallet
for spare
cable**

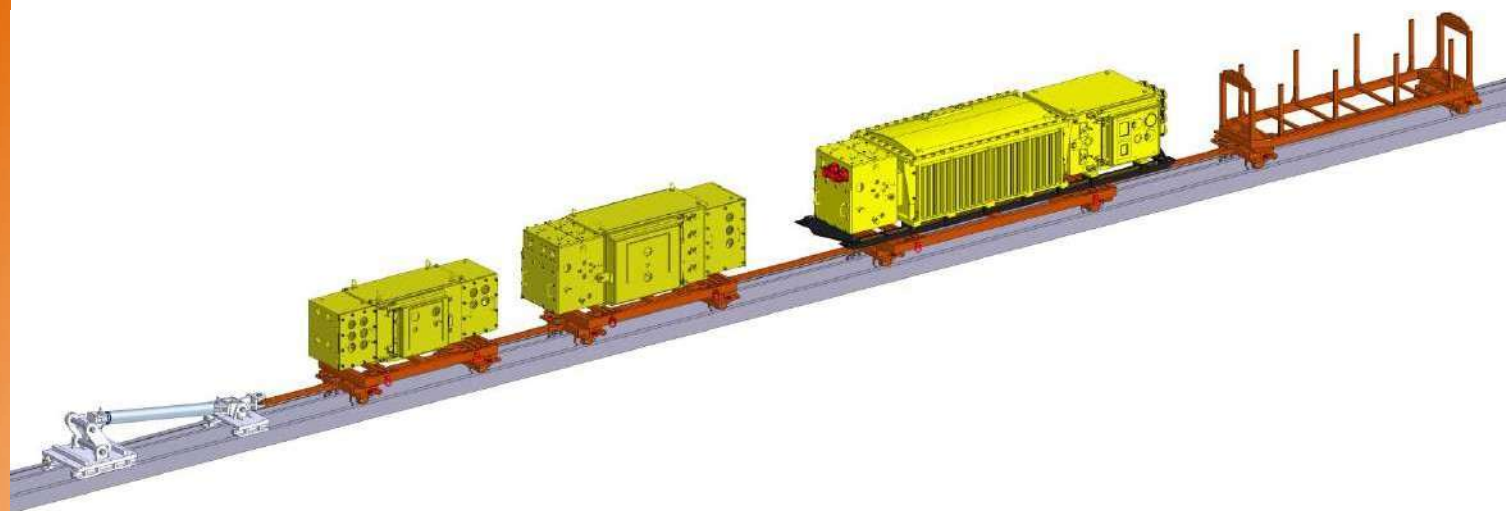
Transportation set with conduit compensation



Pallet type 1-488.1 for spare conduit in KWK Zofiówka,
Jastrzębie-Zdrój.

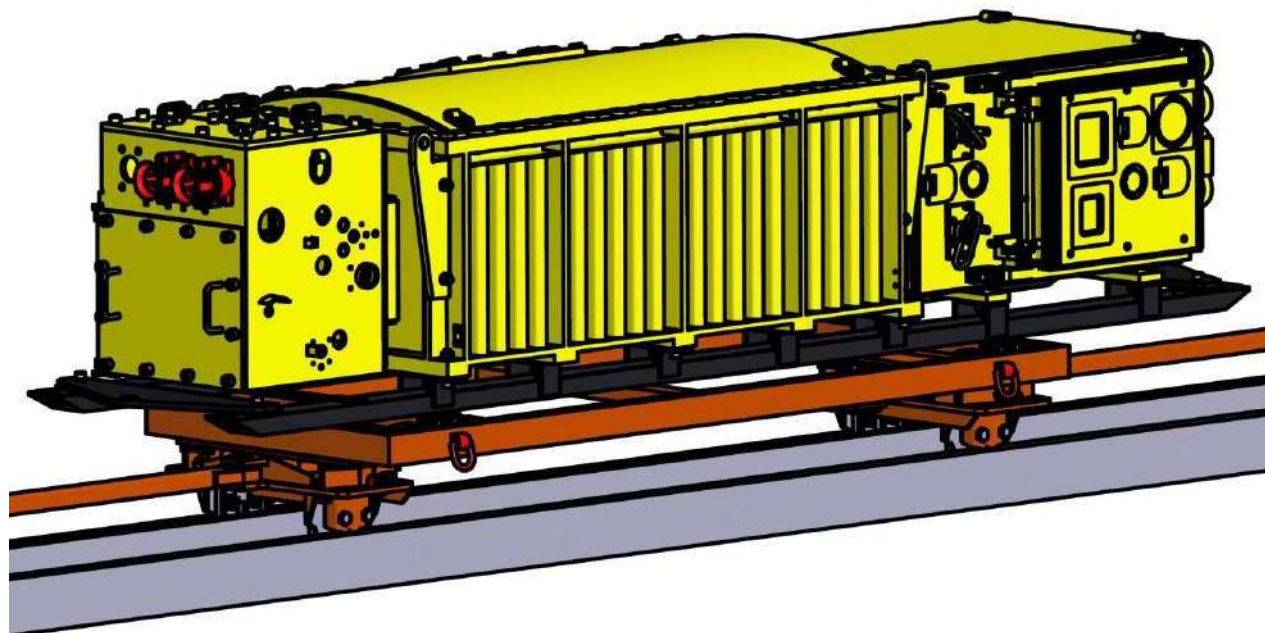
Transportation set shifted on floor rails

**Transportation
set shifted on
floor rails**



**Transportation
set shifted on
floor rails**

Transswitch shifted on floor rails



**Electrical
equipment on
push-plate
conveyor**

Vibration isolation



gum insulator

Compact station on frame type in KWK Wieczorek,
Katowice.



Suspended transportation sets produced by Carbomech occur in majority of Polish Coal Mines

Partners



CARBOMECH



www.carbomech.com.pl e-mail: s.makieiev@carbomech.com.pl




Sviatoslav Makieiev
Inspektor ds. Marketingu

tel.: +48 660 284 220
whatsapp: +48 733 275 085
tel.: +48 32 340 10 35
fax: +48 32 240 17 13
e-mail: s.makieiev@carbomech.com.pl

41-700 Ruda Śląska
ul. Szyb Walenty 34
www.carbomech.com.pl

Carbomech Sp. z o.o.

J.S. Hamilton Poland Sp. z o.o.
Certification Body
ul. Wyzwolenia 14
41-103 Siemianowice Śląskie



**CERTIFICATE OF QUALITY
MANAGEMENT SYSTEM**
No JSHP/1/SZJ/2025

This is to certify that:
CARBOMECH Sp. z o.o.
Szyb Walenty 34
41-700 Ruda Śląska, Poland

in the following scope:
**DESIGN, PRODUCTION, DELIVERY, SERVICE AND OVERHAUL
OF MINING EQUIPMENT AND FITTINGS**

is in conformity with:
**EN ISO 9001:2015
(PN-EN ISO 9001:2015-10)**
which is proved by audit carried out by J.S. Hamilton Poland Sp. z o.o.
– Certification Body in Siemianowice Śląskie.

The certificate is valid:
from 08.02.2025 to 07.02.2028





JS HAMILTON

Siemianowice Śl., 7th February 2025
J.S. Hamilton Poland Sp. z o.o., ul. Chwałczyńska 180, 81-071 Olsztyn
Jednostka Certyfikacji ul. Wyzwolenia 14, 41-103 Siemianowice Śląskie
Tel./Fax: +48 32 730 82 00 www.js-hamilton.com.pl PIS/JP/102 z dnia 03.04.2024