



Metal Yapı Eng & Const

Company Presentation – Steel Bridges, Bespoke Equipment

2025

01 Company Overview

02 Key Project References

Who We Are

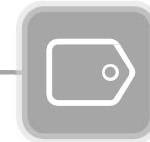
We are a leading Engineering, Fabrication and Contracting group, operating in Metal Construction Systems in International Markets.

Our Key Information



- Established in May 2011
- Operating under Metal Yapi Holding
- Headquarters in Istanbul
- Offices in United Kingdom, Romania, Bulgaria, Russia, Kazakhstan, Kingdom of Saudi Arabia
- Various fabrication facilities in Europe
- More than 80 Projects Undersigned Since 2011
- Official Company Name: ENG Metal Yapi İnş. Taah. San. Dış Tic. A.Ş.

Our Business



We are a major contractor of projects in;

- Architectural and Structural Steel
- Free-Form Structures and Skylights
- Façade and Roof Cladding
- Bespoke Equipment
- Off-Site Construction and Modular Buildings
- Heavy-Lifting and Incremental Launching

Our Steel Fabrication Facilities



Bolintin-Deal, Romania

Land Area (sqm) : 60.000 Closed Area (sqm) : 6.000
Product Service Portfolio : Steel Structure Fabrication



İstanbul / Inox Plant

Closed Area (sqm) : 8.000
Product Service Portfolio : Stainless Steel Works Fabrication



Ankara / Skymark Plant

Closed Area (sqm) : 6.000
Product Service Portfolio : Stainless Steel Works Fabrication



Our Steel Fabrication Facilities



Chelyabinsk, Kelan Plant - Russia

Land Area (sqm) : 12.500

Closed Area (sqm) : 5.800

Product Service Portfolio : Steel Works Fabrication



Alyans Plant- Ankara-Turkey

Land Area : 6.000

Closed Area (sqm) : 4.200

Product Service Portfolio : Steel Works Fabrication



Our Facade and Cladding Fabrication Facilities



Istanbul Tuzla, Turkey

Land Area (sqm) : 1.000

Closed Area (sqm) : 600

Product Service Portfolio : Façade & Cladding Works Assembly & Warehouse



Tver Plant - Russia

Land Area : 36.000

Closed Area (sqm) : 9.000

Product Service Portfolio : Facade and Cladding Works



Tuzla Plant – Turkey

Land Area : 10.000

Closed Area (sqm) : 4.000

Product Service Portfolio : Facade and Cladding Works



Our Facade and Cladding Fabrication Facilities



Istanbul Catalca, Turkey

Land Area (sqm) : 73.500

Closed Area (sqm) : 22.000

Product Service Portfolio : Aluminum Works Fabrication



Istanbul / Trace Free Zone Plant

Closed Area (sqm) : 14.000

Product Service Portfolio : Facade and Cladding Works



Our Company Structure



Metal Yapi Engineering UK Limited
London, United Kingdom

ENG Limited
Chelyabinsk, Russia

S+G Steel & Glass Construction S.R.L.
Bucharest, Romania

S+G Steel & Glass Construction J.S.C.
Varna, Bulgaria

Metal Yapi Construction LLC.
Riyadh, Saudi Arabia

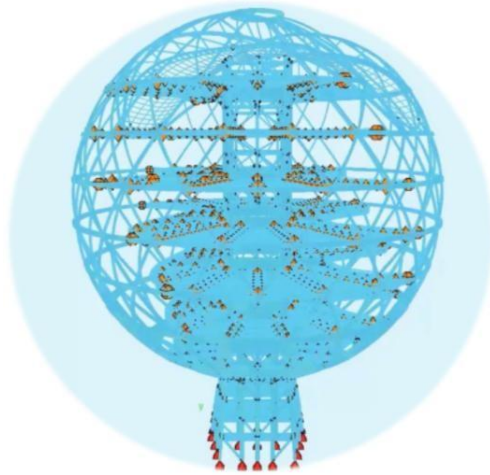
Russia, Chelyabinsk

Kazakhstan, Nursultan

Georgia, Batumi

What We Do

Our Services includes all phases from Design until Erection



Engineering & Design

Functional design solutions with advanced engineering capabilities in challenging projects in order to fulfill our clients and architects needs



Supply & Fabrication

Competitive advantage in raw material supply and ability to distribute and control fabrication throughout several facilities in both foreign and domestic markets



Installation & Supervision

Experienced project management team capable to counter the deadlines of the project by managing erection phases and supervising the process

Free Form Structures & Skylights



Façade & Roof Cladding



Structural Steelworks



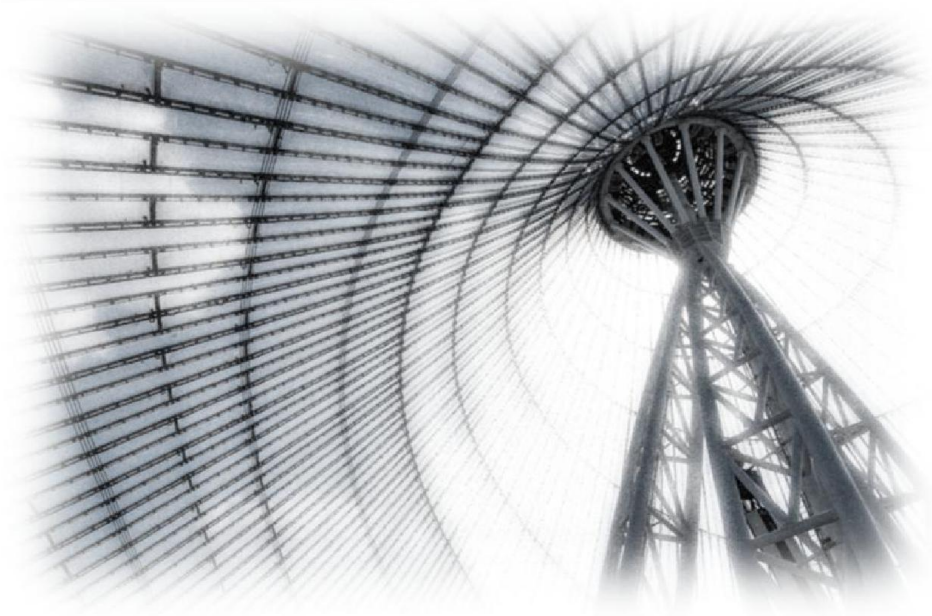
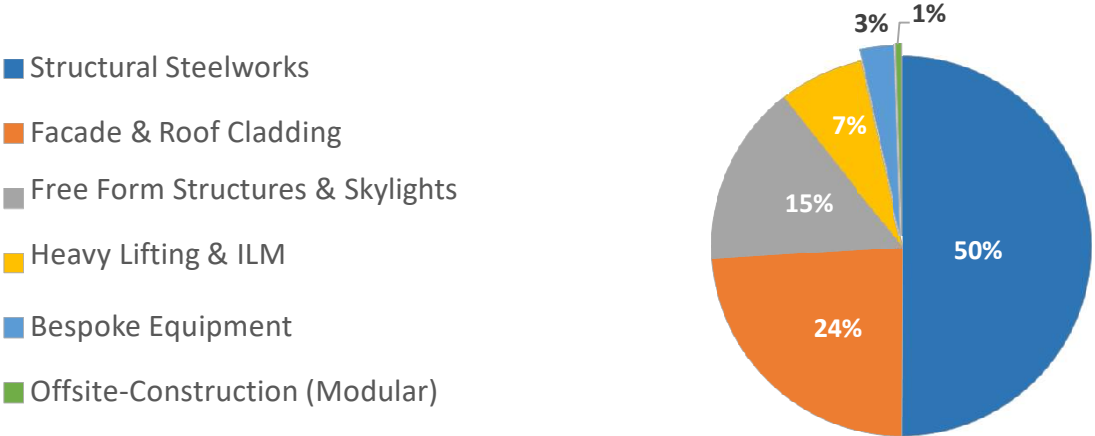
Heavy Lifting & ILM Works



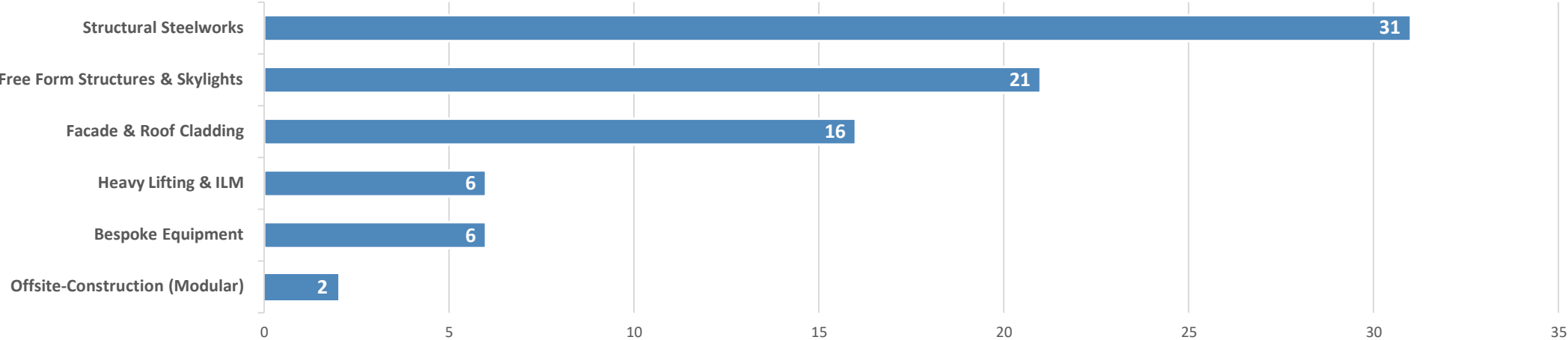
Bespoke Equipment



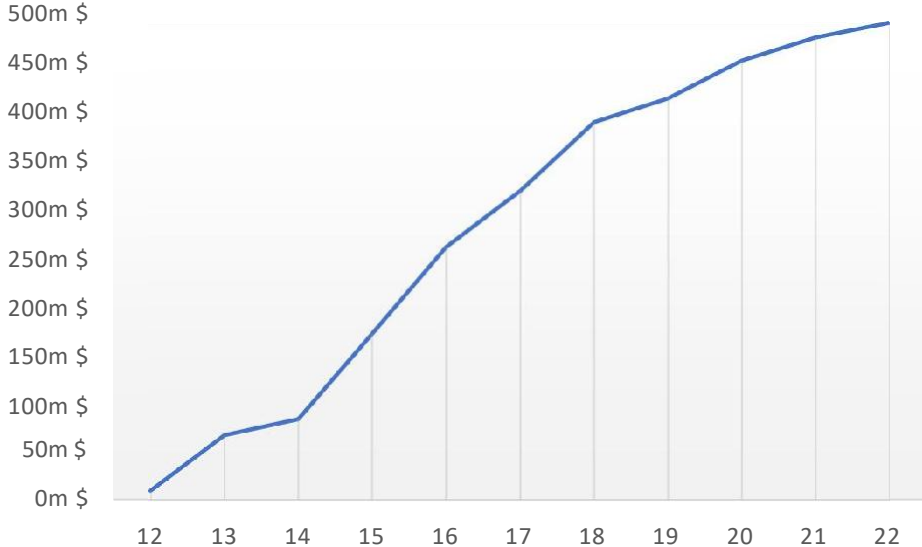
Distribution of Our Works According to Contract Values (%)



Number of Projects by Work Type

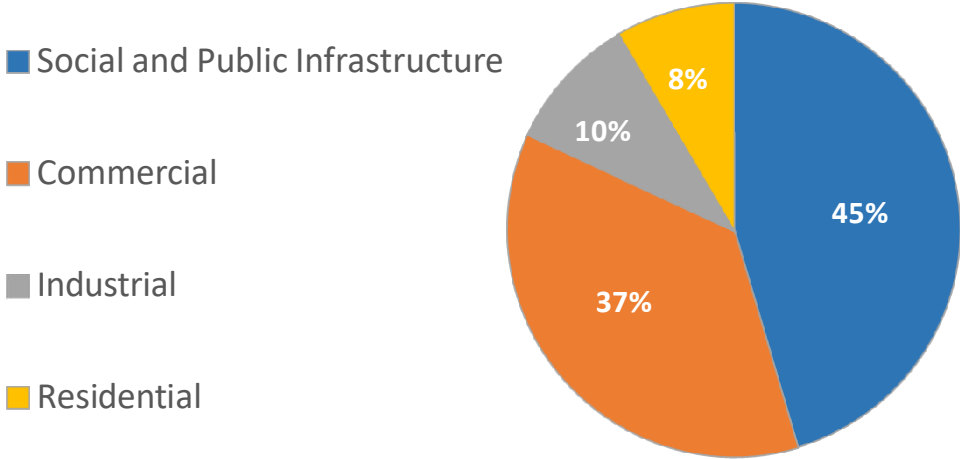


Contract Acquisitions



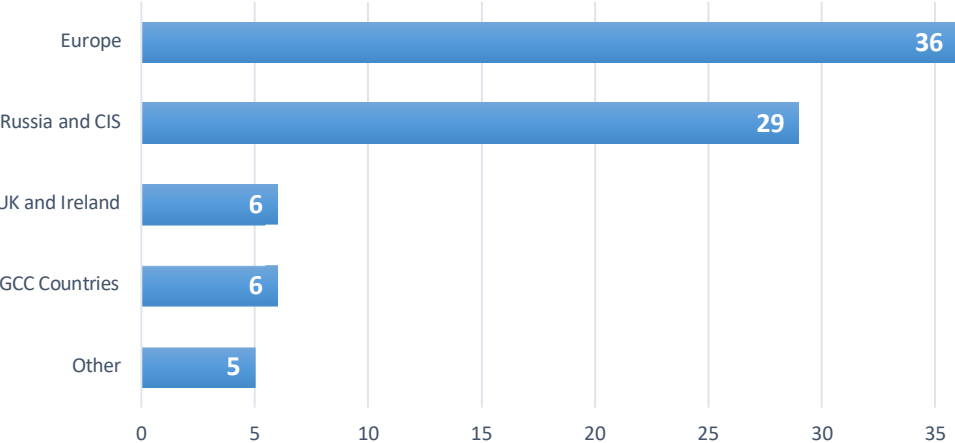
In total, 490m-\$ worth of contracts undertaken

Distribution of Contracts by Building Purpose (%)

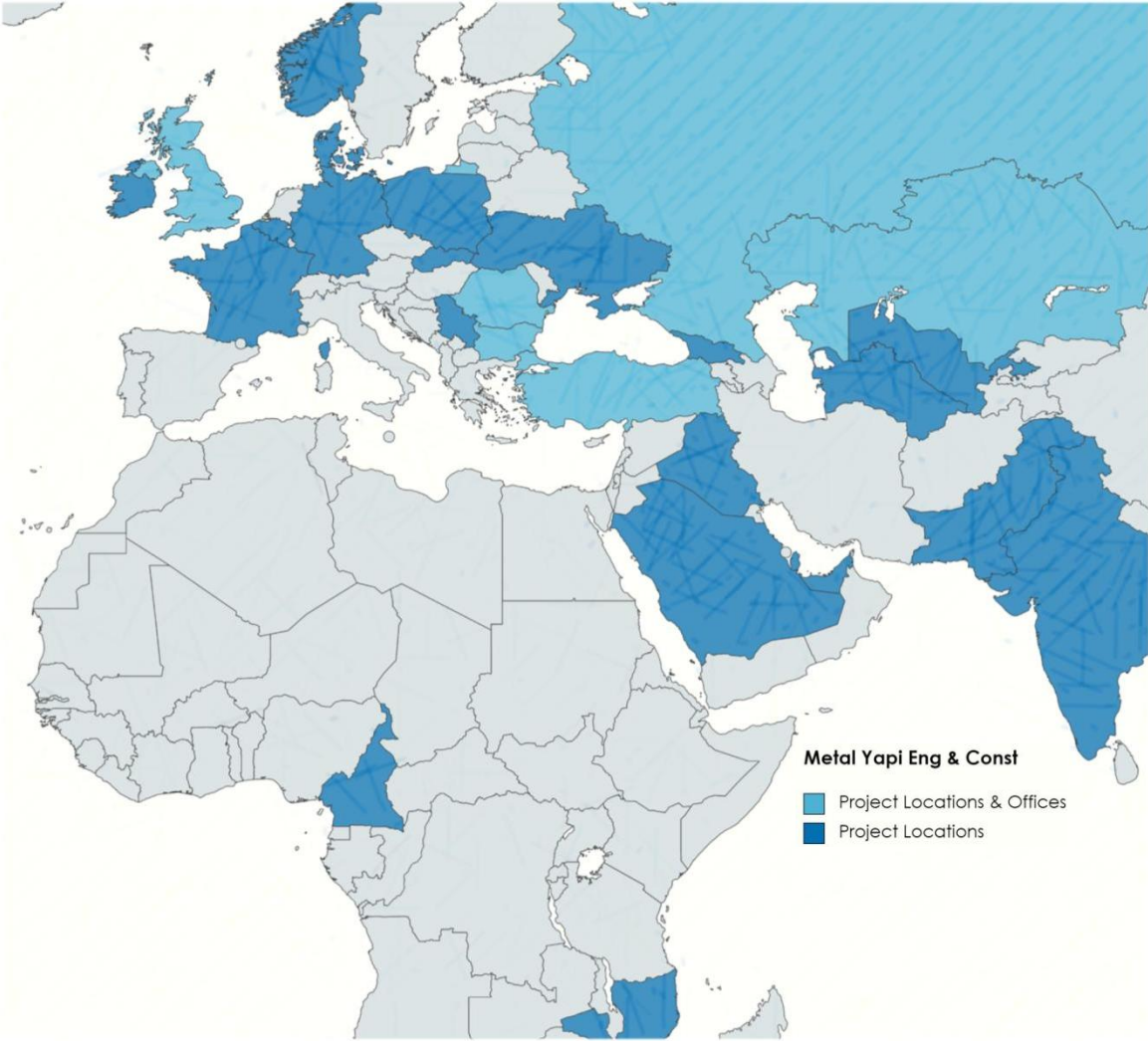


Contracts Mainly related with Social and Public Infrastructure

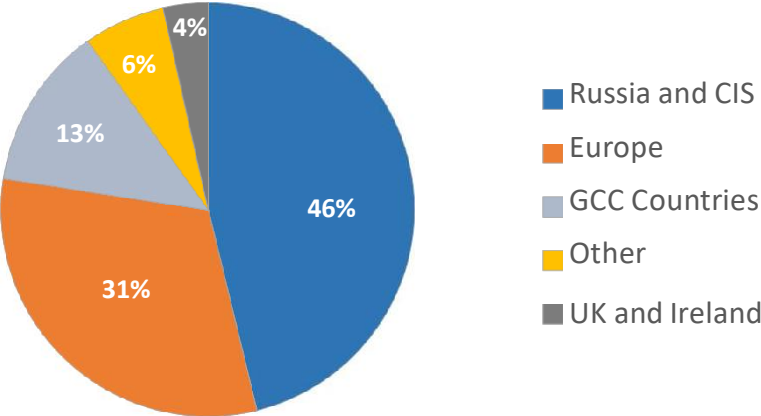
Number of Projects Executed in Regions



+ 80 Projects Worldwide in 12 Years



Distribution of Contract Values by Regions (%)



Key Clients, Architects and Consultants



FUKSAS



WRZNRZ SZVMM .



ADRIAN SMITH+GORDON GILL ARCHITECTURE



Foster + Partners



BURO HAPPOLD ENGINEERING



ARUP



SOM



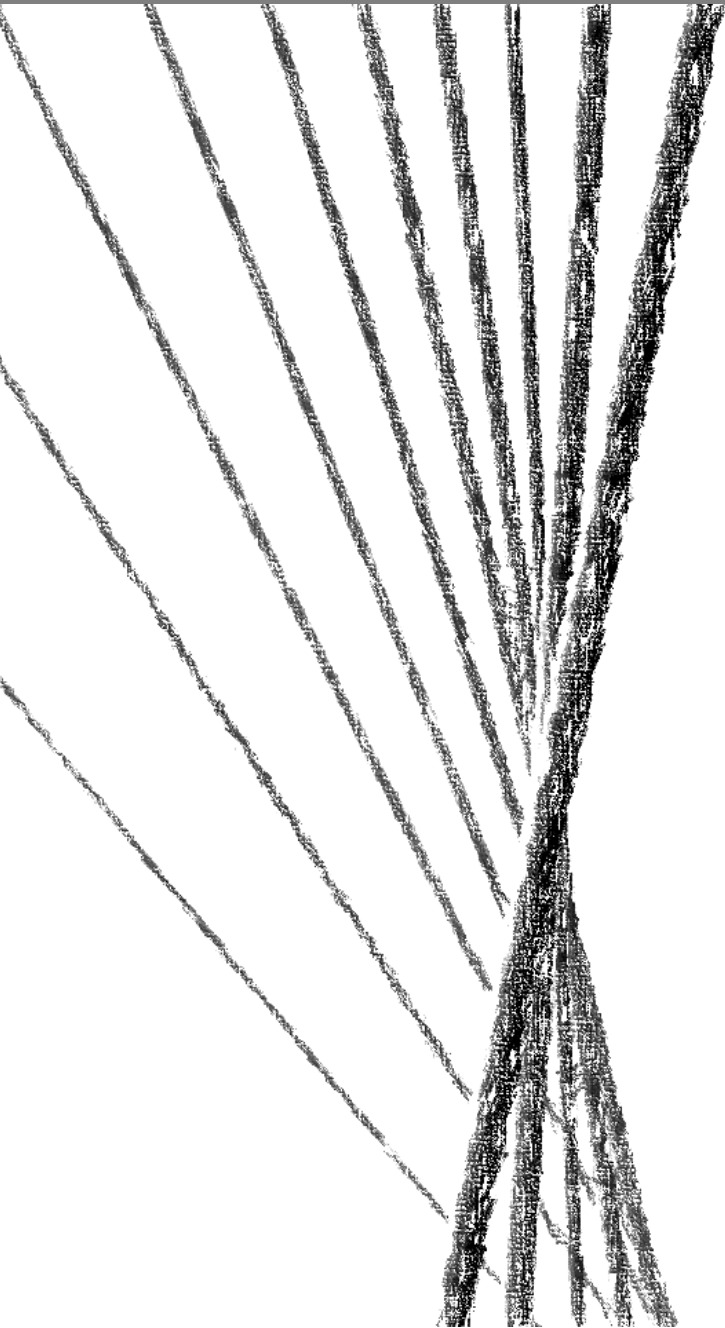
AECOM

DAELIM

Turner

01 Company Overview

02 Key Project References



Steel Bridges

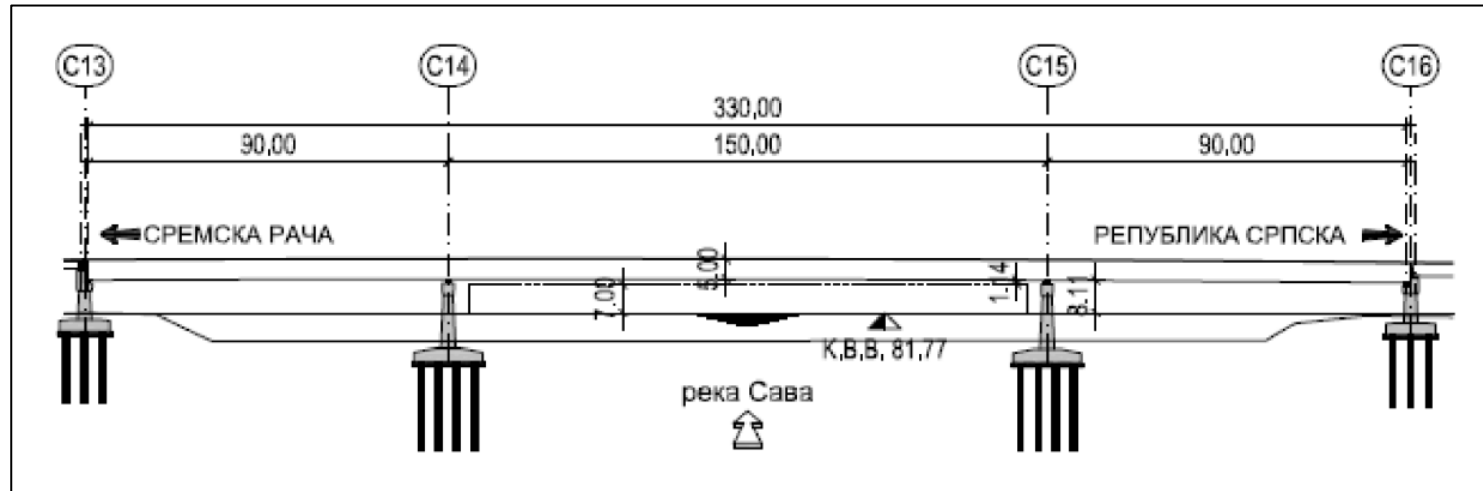


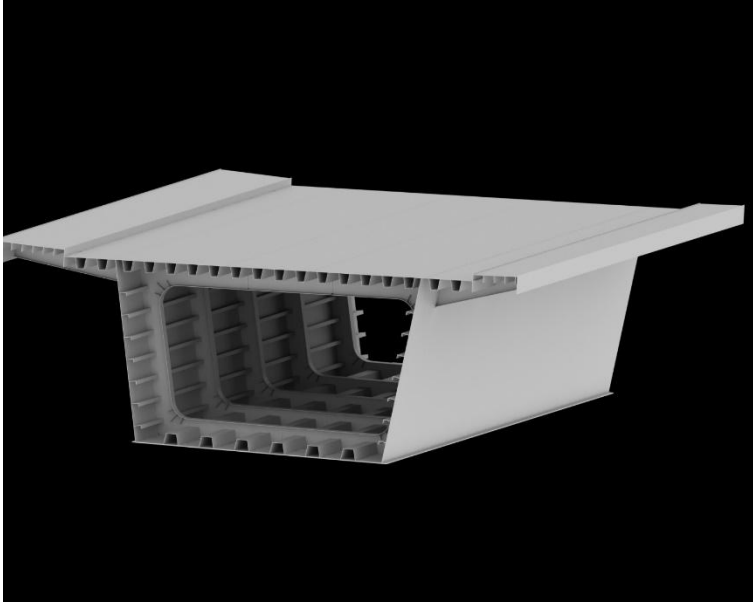
SREMSCA RACA BRIDGE

Over Sava River Between Serbia & Bosnia-Herzogova

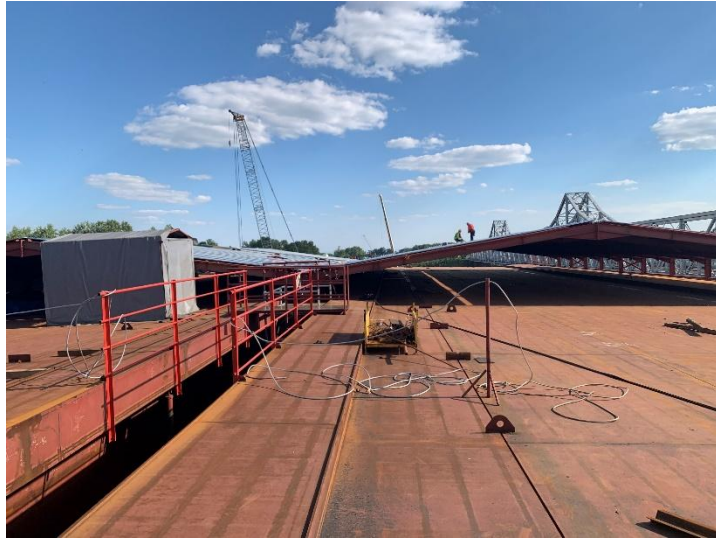
Architects : SERBIA HIGHWAYS

Contractor : TAŞYAPI CONSTRUCTION











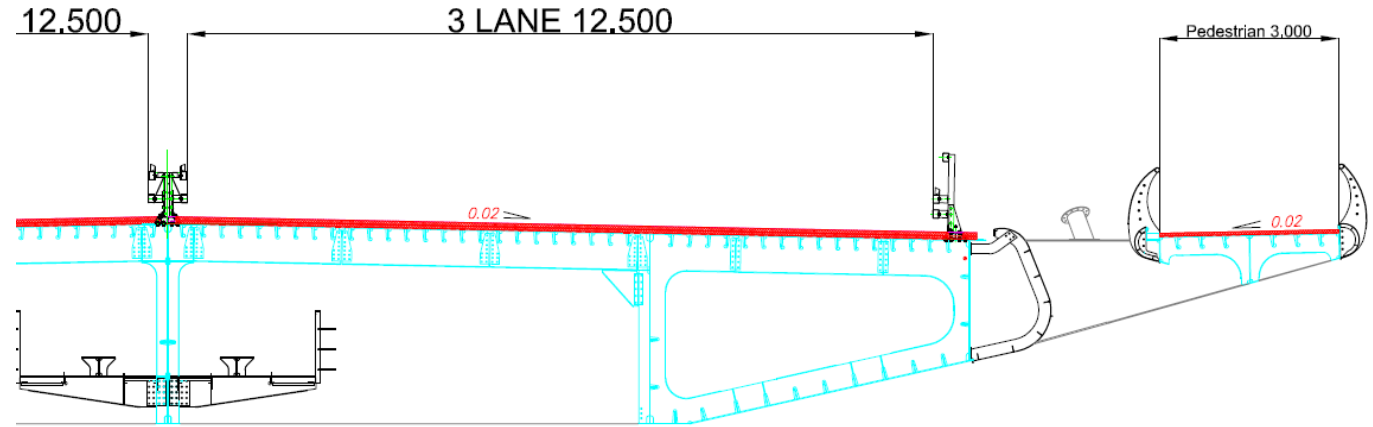
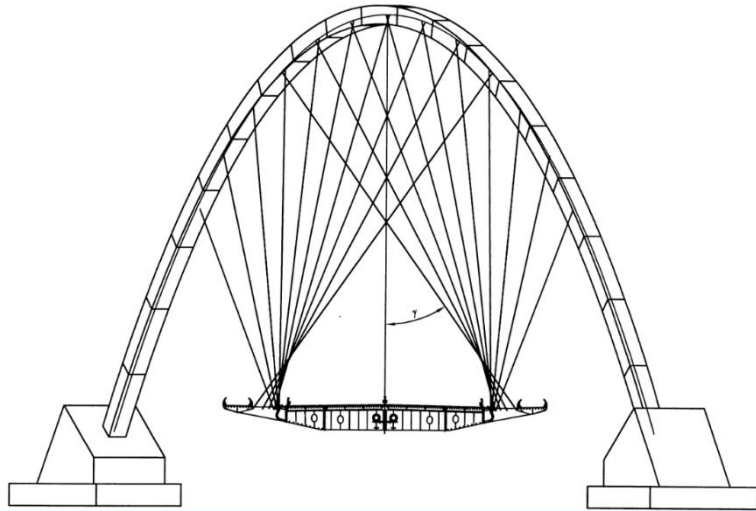


RAMSTORE BRIDGE
Nur-Sultan / Kazakhstan

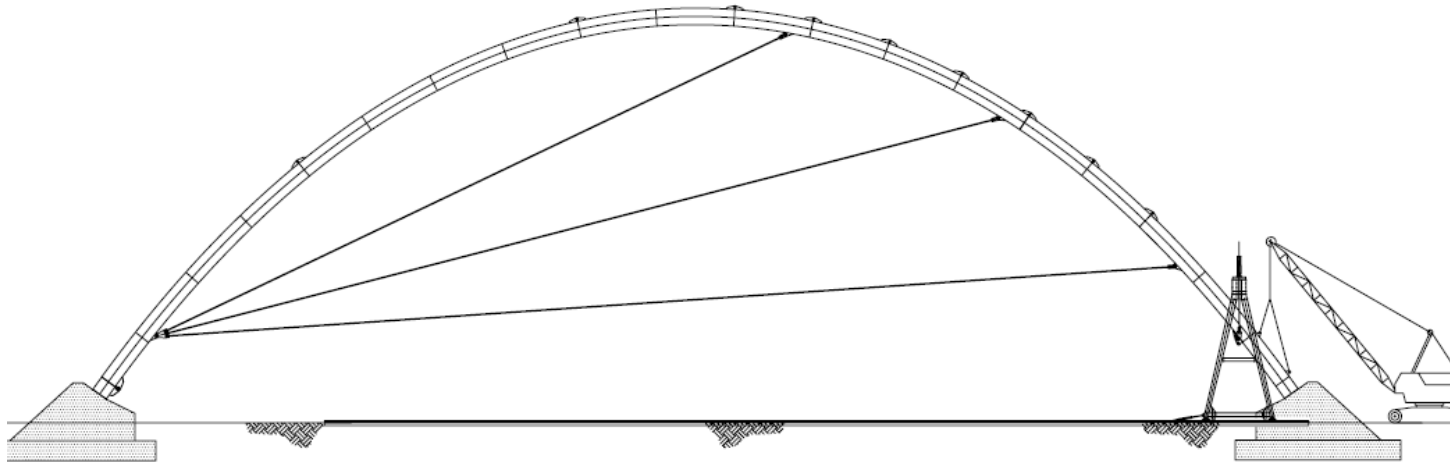
Architects : NPO MOSTOVİK OOO
Contractor : TASYAPI CONSTRUCTION



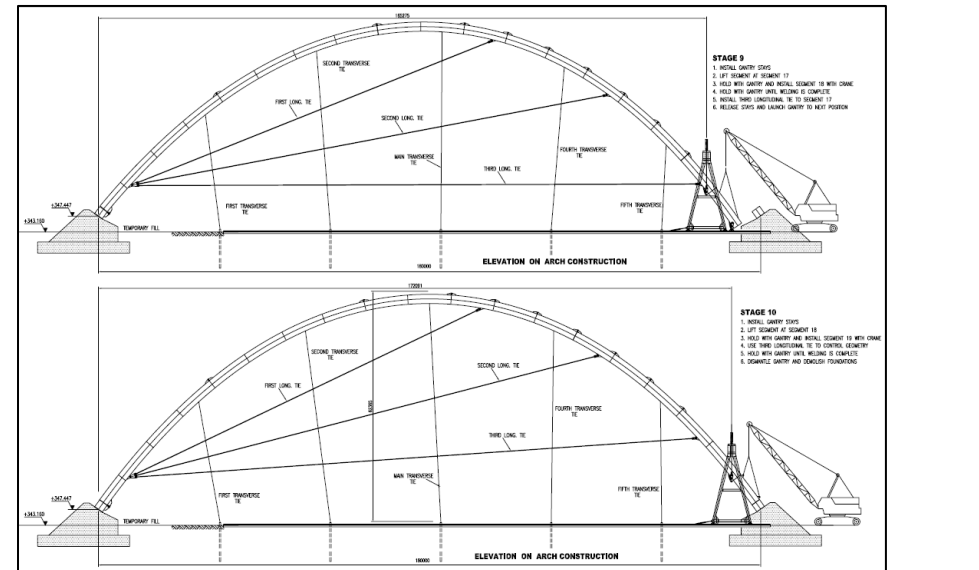
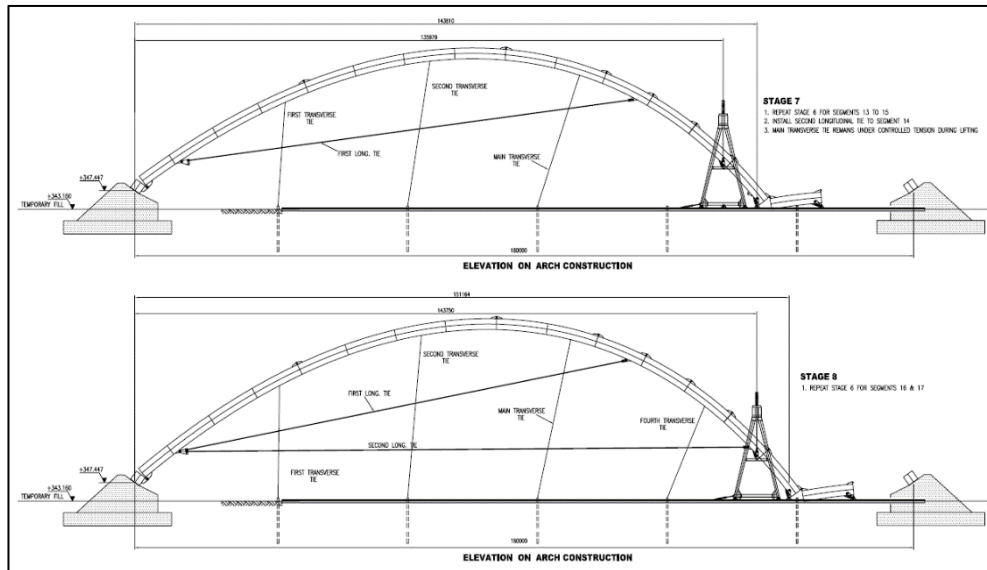
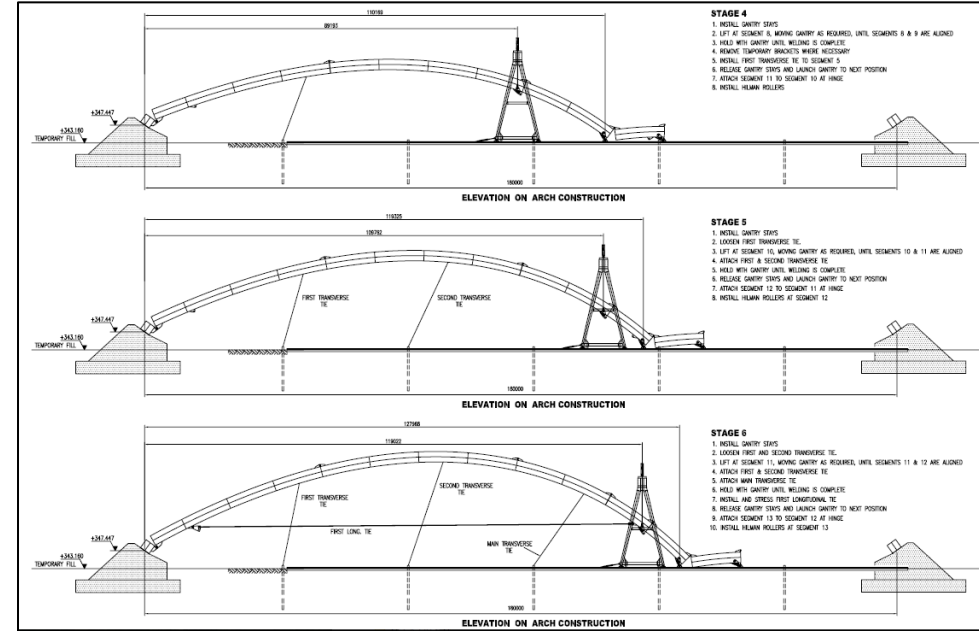
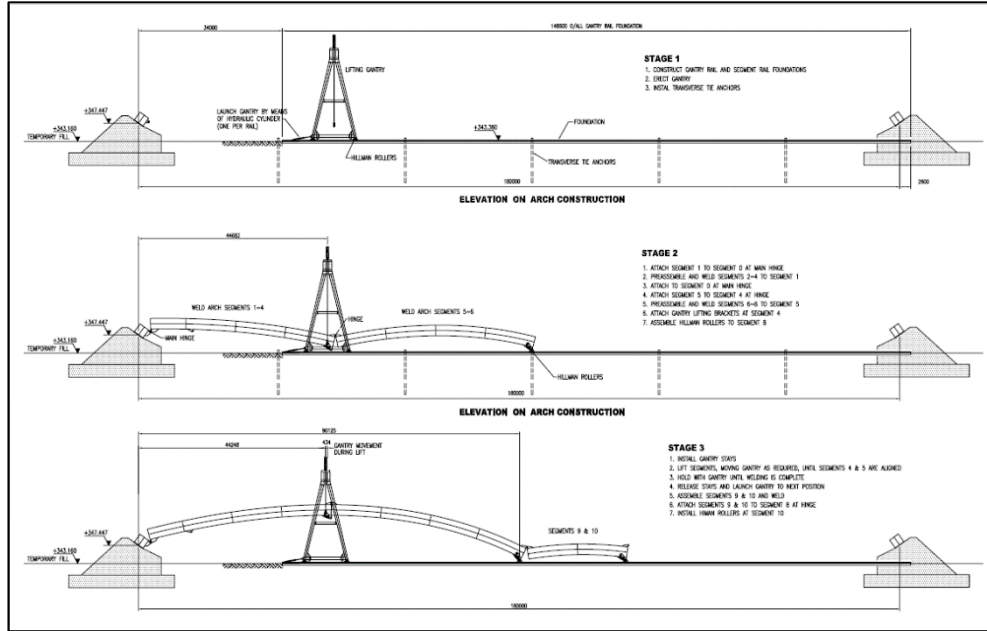


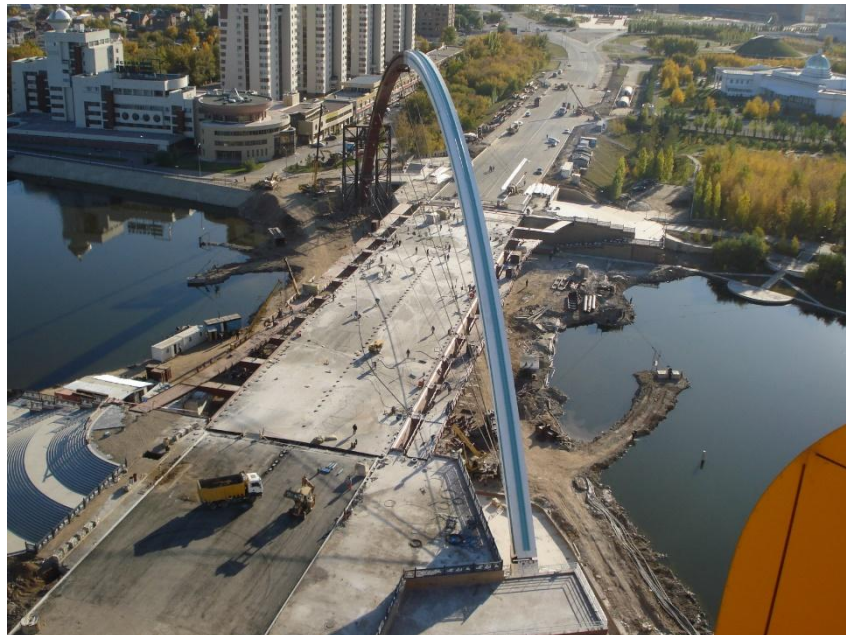
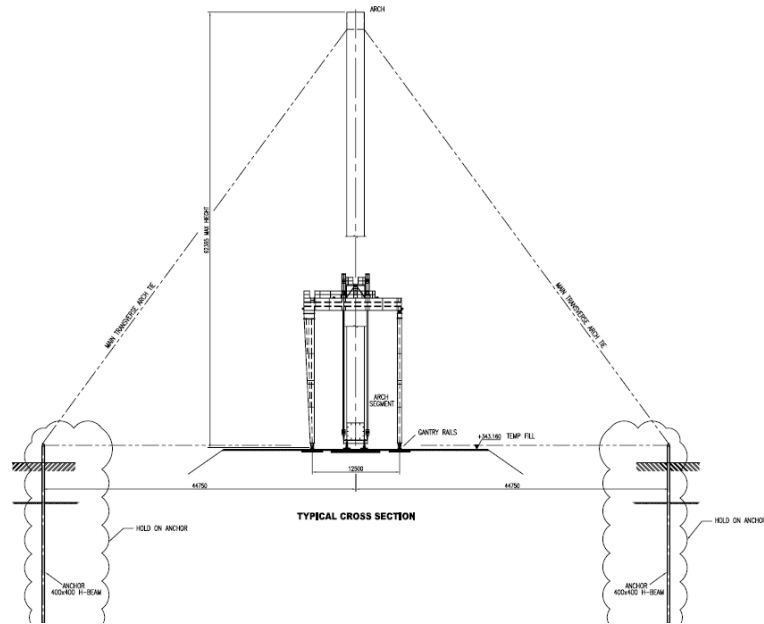


RAMSTORE ARCH BRIDGE - ASTANA



**ERECTION PROCEDURE
&
ERECTION EQUIPMENT
SHOP DETAILS**

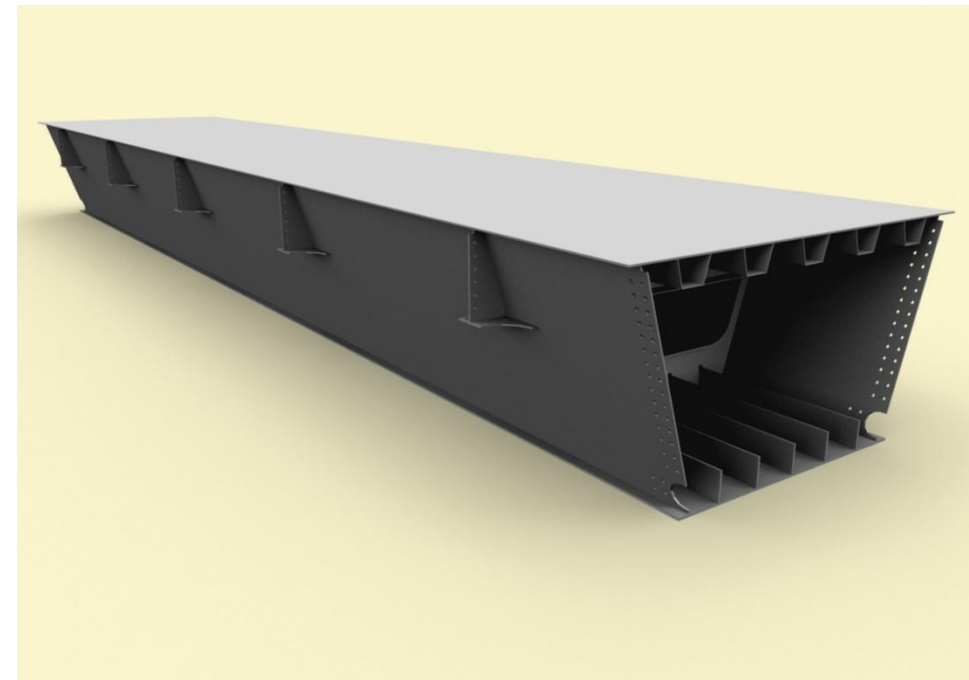
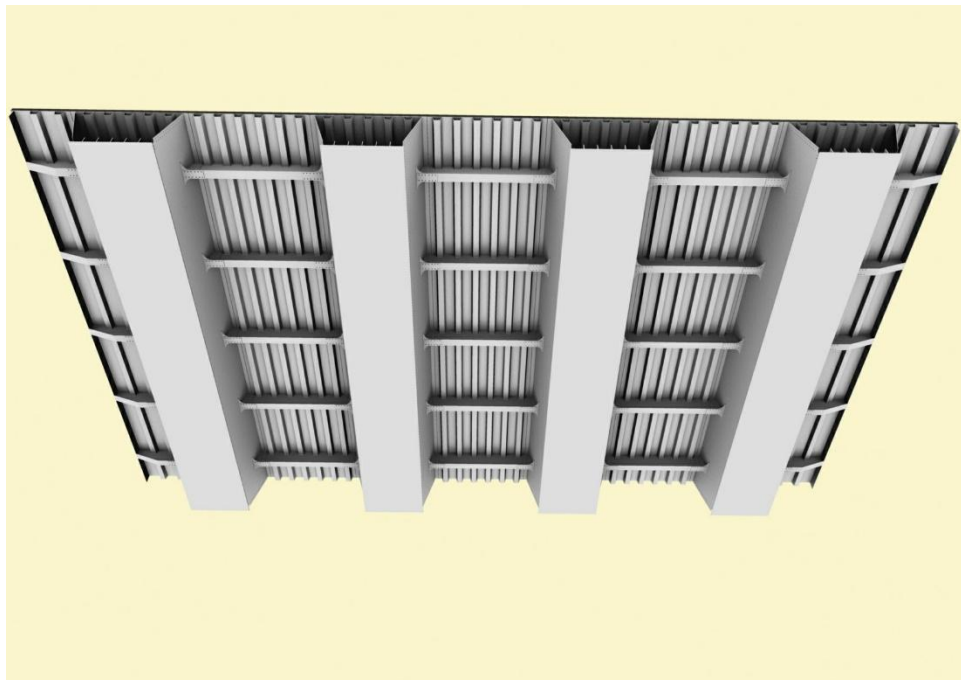






BOGENBAYA VIADUCT
Nur-Sultan / Kazakhstan

Architects : OAO KAZDORPROJECT
Contractor : CEYLAN CONSTRUCTION







M3 BRIDGE
Nur-Sultan / Kazakhstan

Architects : NPO MOSTOVİK OOO
Contractor : BYELKAMIT LLP

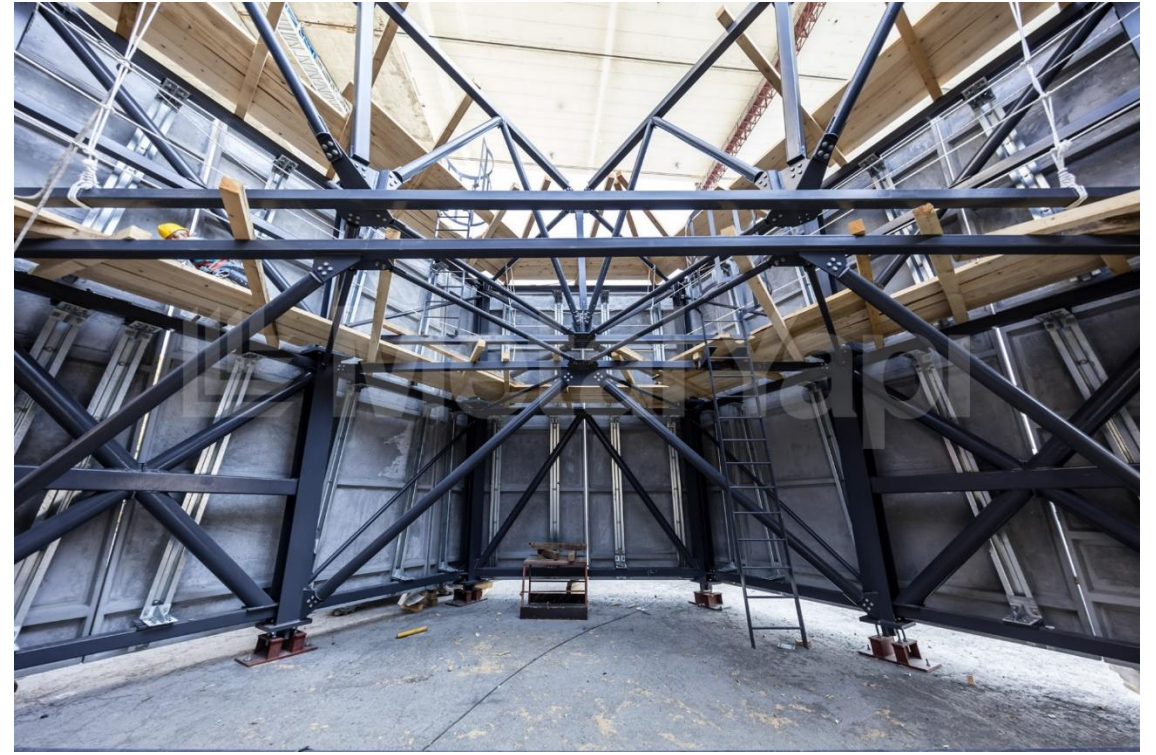


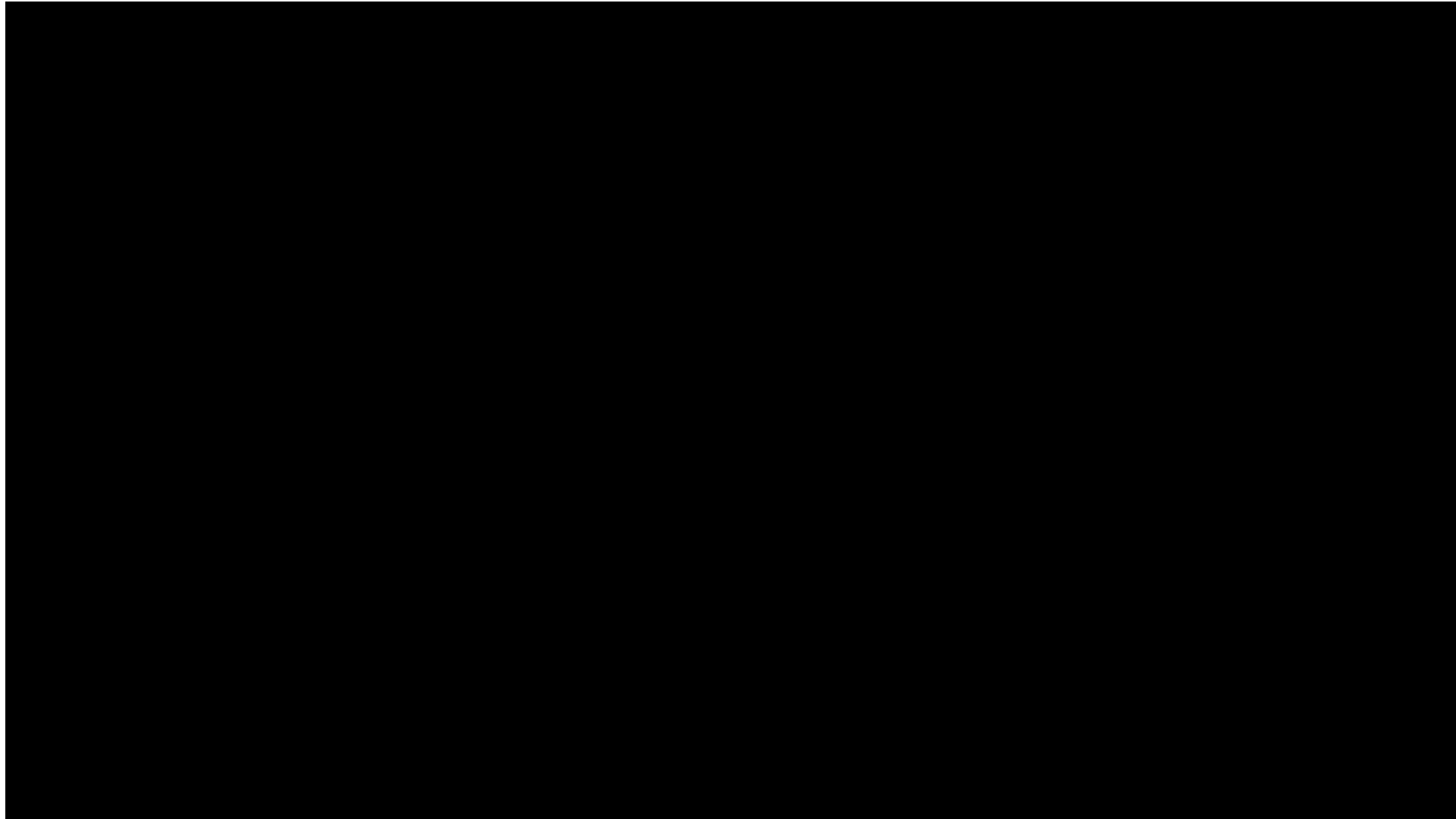


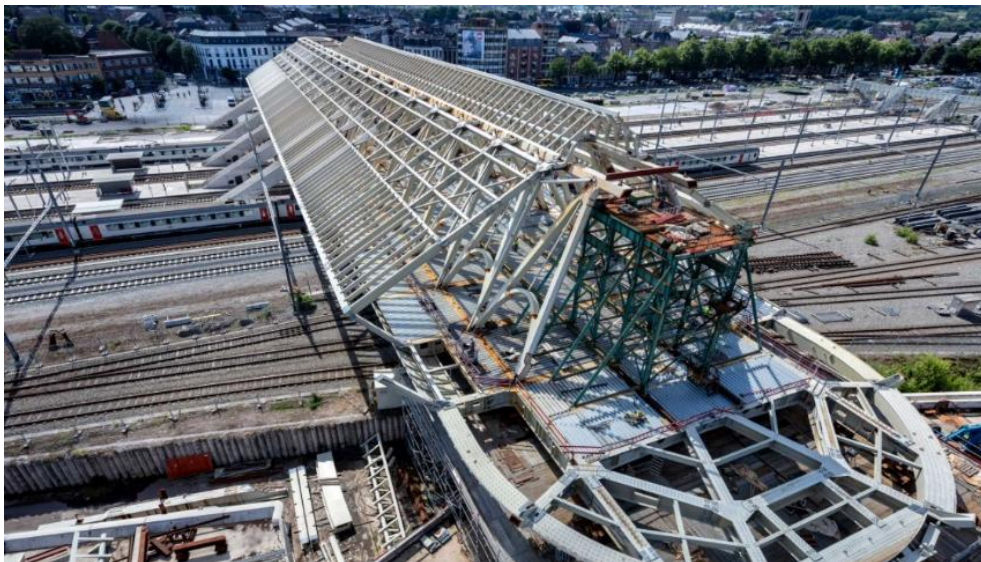


YAVUZ SULTAN SELIM BRIDGE – TOP COVERS Istanbul / Turkey

Architects : MICHEL VIRLEGOUX
Contractor : HYUNDAI SK JV & FIBROBETON
Structural Engineer : T INGÉNIERIE







GARE DE MONS

Mons / Belgium

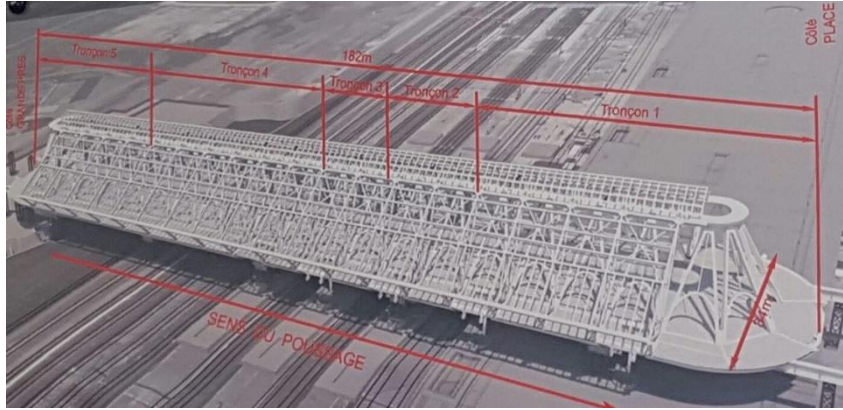
Architects : SANTIAGO CALATRAVA

Contractor : CIT BLATON

Structural Engineer : SECO

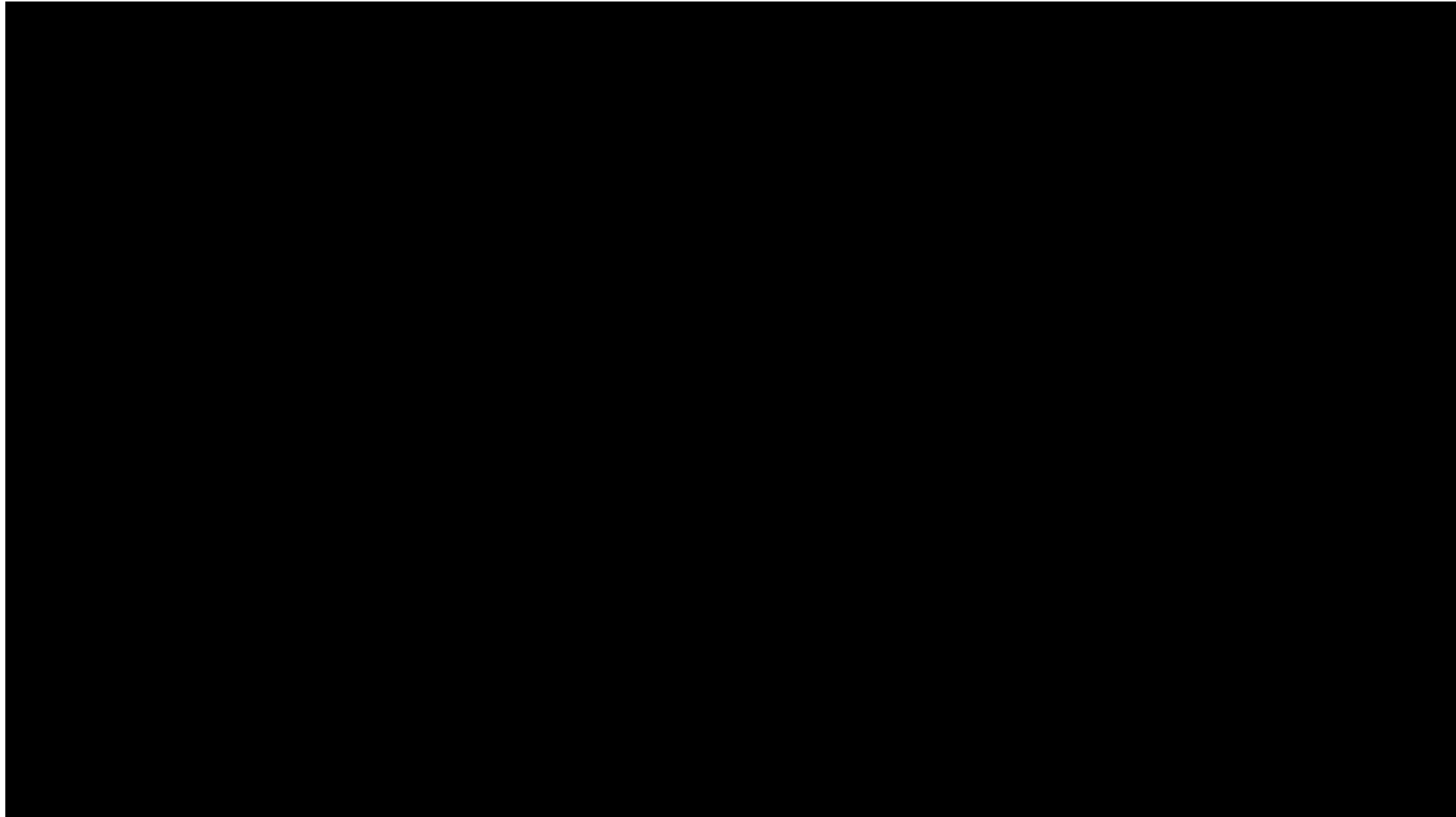


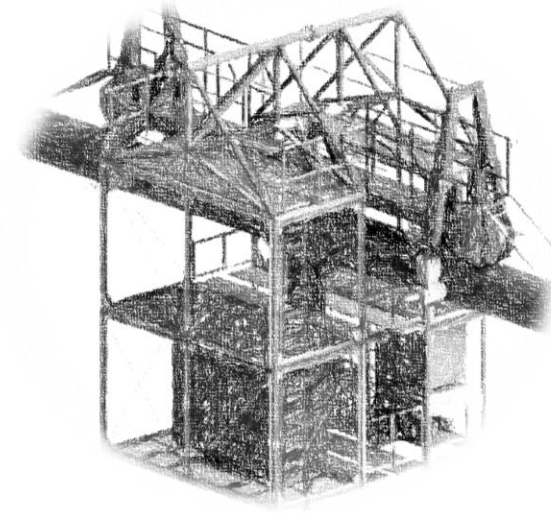




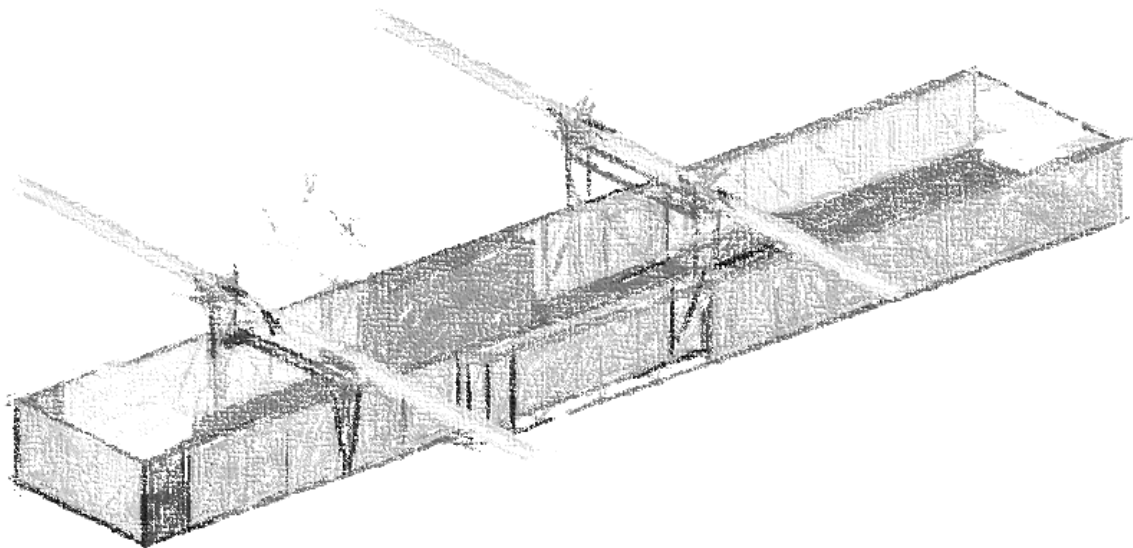








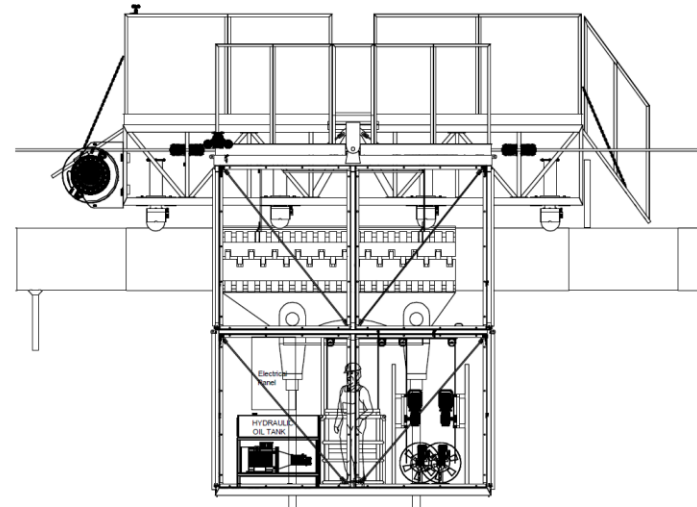
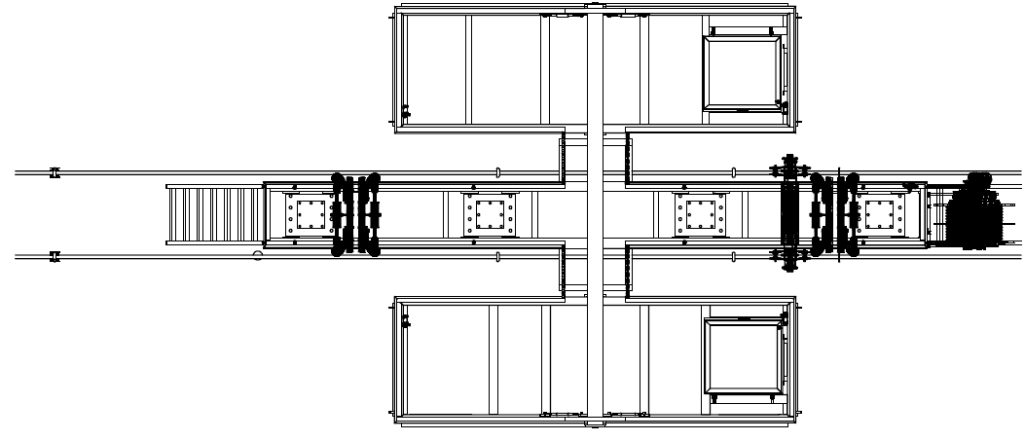
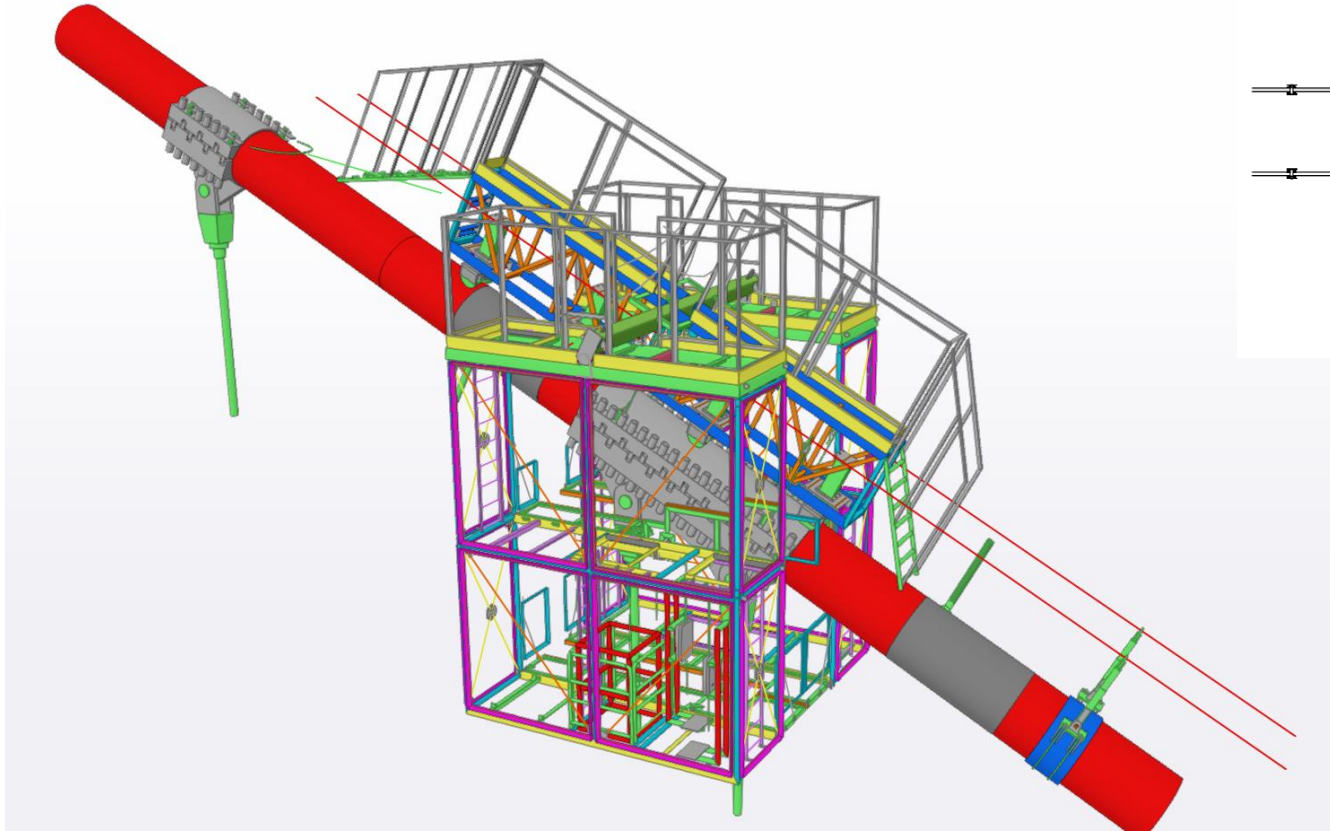
Bespoke Equipment

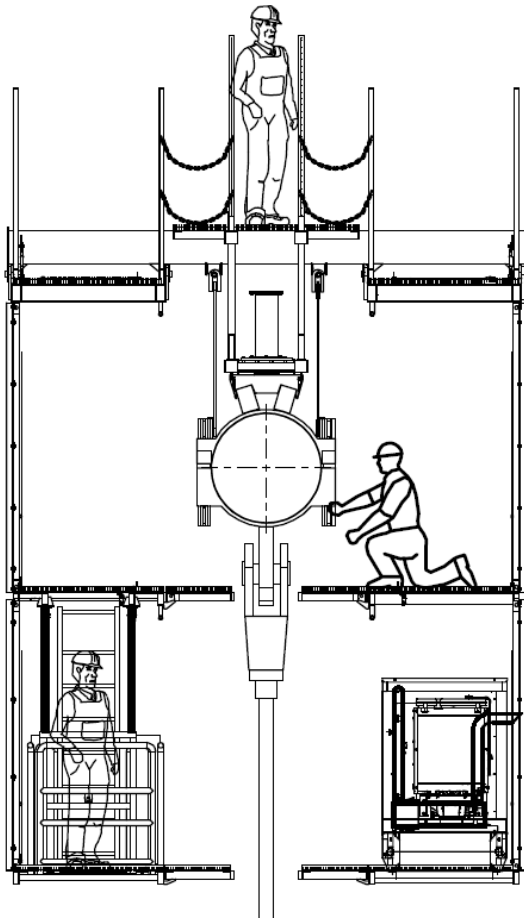




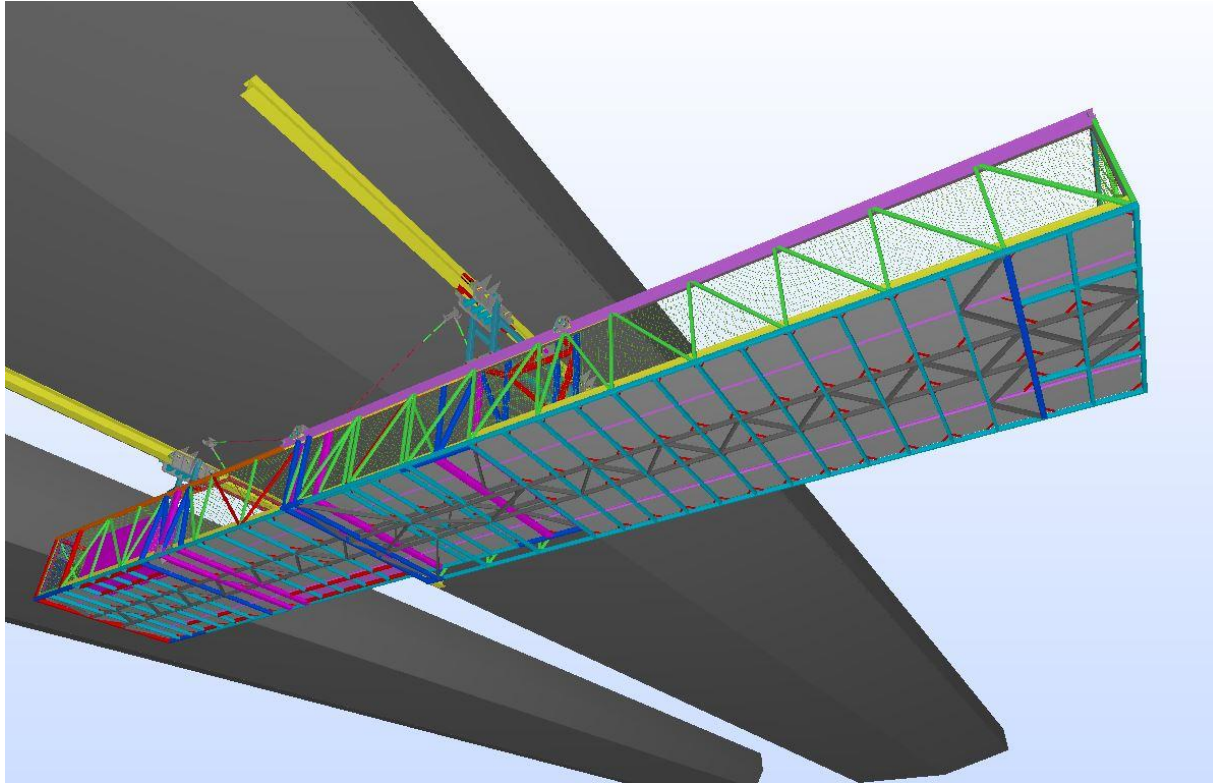
Canakkale Bridge Underdeck Maintenance Gantry and Cable Carriage
Canakkale / Turkey

Contractor : DLSY Joint Venture





No.	Item	Requirement	Design
1	Free height	2.1 m	2.1 m
2	Reachability of hanger	Upper 1 m of the hanger should be reachable.	is reachable
3	Reachability of the main cable	2 m of the main cable should be reachable.	is reachable
4	Grid flooring	$\leq 20 \times 20 \text{ mm}$	20mm x 20mm
5	Surrounding Mesh	$\leq 50 \times 50 \text{ mm}$	50mm x 50mm
6	Height of Handrail	$\geq 1.5\text{m}$	1.5 m
7	Main Cable Inclination	$\alpha \leq 27.5^\circ$	✓
8	Cable Inspection Carriage Velocity	$1[m/min] \leq v \leq 10[m/min]$	✓
9	Max. Wind Speed during Operation	$v_b = 20 \text{ m/s}$	✓
10	Storm Wind Speed	$v_{b,0} = 29 \text{ m/s}$	✓





Osmangazi Bridge Deck Maintenance Gantries and Cable Carriages
Izmit / Türkiye

Contractor : IHI



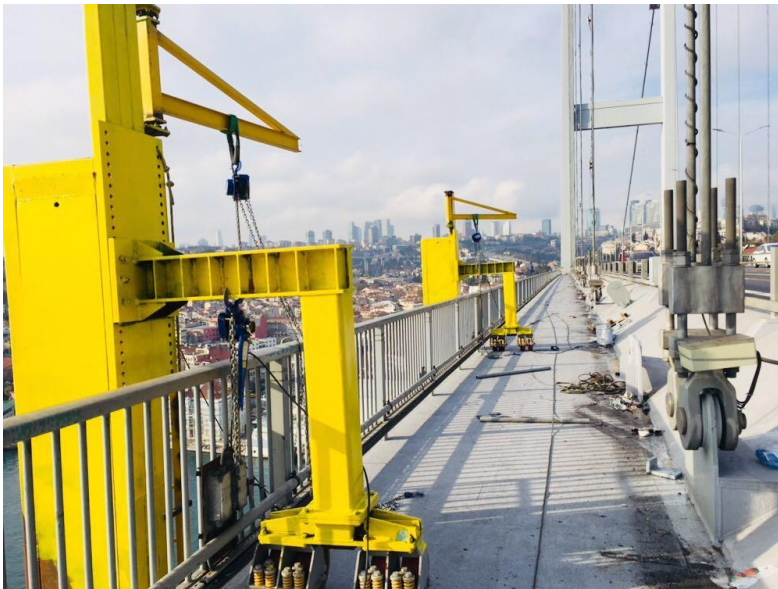






15 Temmuz Bosphorus Bridge Underdeck Maintenance Gantry
İstanbul / Turkey

Contractor : MAKYOL



Project Name	Contract Value	Project Country	Building Area of Use	Contractor Company	Architect Company
Talan Tower Facade and Steelworks	54,8m \$	Kazakhstan	Commercial	Rönesans Holding	S.O.M.
Expo 2017 Astana	49,7m \$	Kazakhstan	Social and Public Infrastructure	Sembol Const	Adrian Smith + Gordon Gill
Bozshakol Copper Ore Processing Plant	40,5m \$	Kazakhstan	Industrial	Alarko Construction	AUSENCO
Al Diriyah Farm	32,8m \$	KSA	Residential	SL-Rasch Gmbh	MYAA Mangera Yvars Architects
Water World of Poland	26,8m \$	Poland	Commercial	Global Parks Poland	Archi Etage

 **Metal Yapı** Eng & Const