

# SKYWEB EXPRESS

TRANSPORTATION FOR THE 21<sup>ST</sup> CENTURY



PRESENTATION BY

MRM INTERNATIONAL, INC.

# SKYWEB EXPRESS

TRANSPORTATION FOR THE 21<sup>ST</sup> CENTURY



## CURRENT TRANSPORTATION TECHNOLOGY

- Surface Transit Contributing to Congestion
- Limit Access
- Lack Consistent Reliable Service
- Expensive to Construct and Operate
- Old Technology
- Have Not Solved Congestion
- Stop at Every Station Making Them Inefficient





A red, aerodynamic pod is shown in motion, traveling along a dark track. The background is a dense, illuminated city skyline at night, with numerous skyscrapers and buildings glowing with lights. The pod has a large, dark window and a sleek, modern design.

# **SKYWEB EXPRESS**

**MOVING MORE PEOPLE  
TO DESTINATIONS FASTER,  
SMARTER, AND SAFER.**

**Unlike other forms of mass public transportation, SkyWeb's individual and private transport will protect passengers from exposure to other infected passengers.**

**Personalized Point-to-Point Mass Transit Guided by Echo Control System Software.**

# MRM Management

## **Mario Galler**

- Mario started his first business at... And is a serial entrepreneur with multiple successes. Expertise in Business Development

## **Regard Yakou**

- Regard is a Profession Engineer with expertise in running Billion Dollar development construction project and Metro Transit systems World Wide

## **Mike Lester**

- Mike has 20 years experience in the automated transit industry and is a leading expert in the automated rapid transit industry.

**SKYWEB EXPRESS**

TRANSPORTATION FOR THE 21<sup>ST</sup> CENTURY







# SKYWEB EXPRESS

TRANSPORTATION FOR THE 21<sup>ST</sup> CENTURY

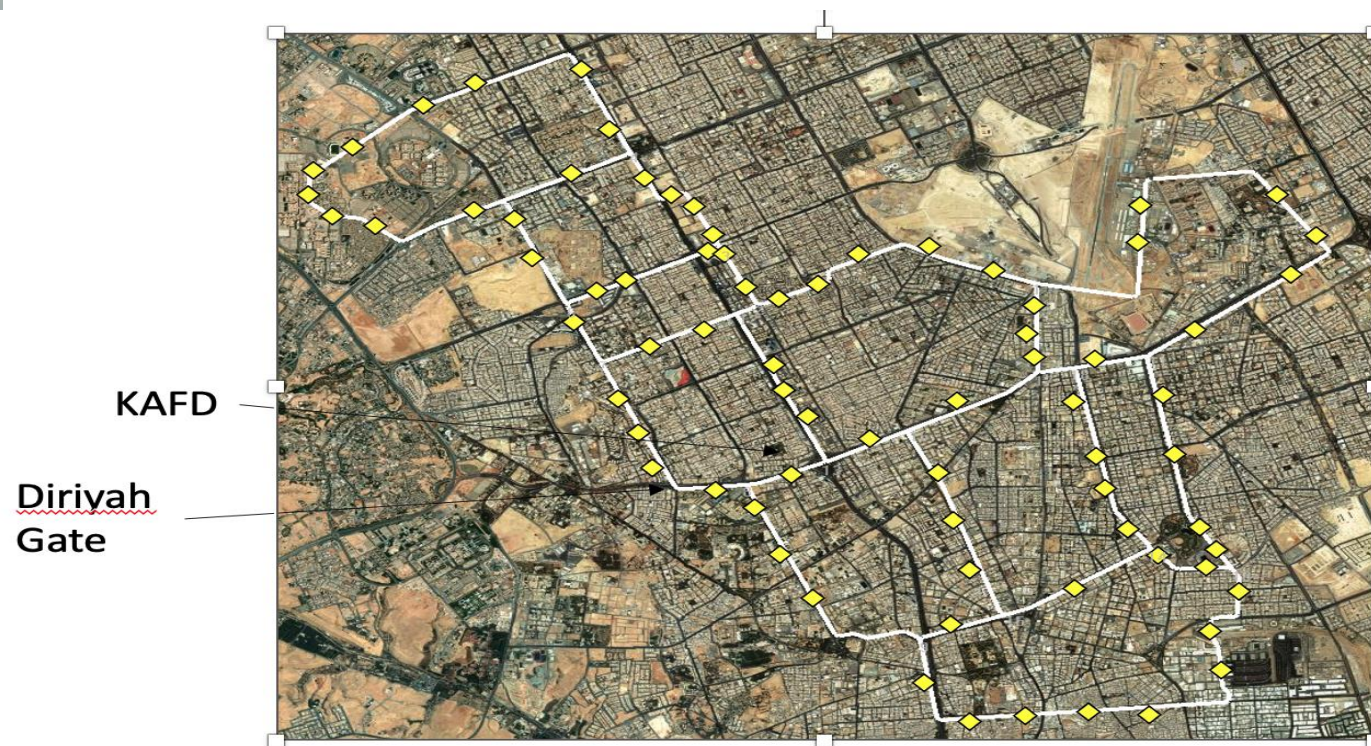


## SKYWEB NETWORK **EFFECT**

- Direct Access From Any Station to Any Station
- Increases System Capacity
- Decrease Operational Costs

## HOW THE TECHNOLOGY **WORKS**

- Asynchronous Control
- Variable Speed
- On Vehicle Switch
- Off-Line Stations



# SKYWEB EXPRESS

TRANSPORTATION FOR THE 21<sup>ST</sup> CENTURY



## SKYWEB TO INCREASE **ROI**

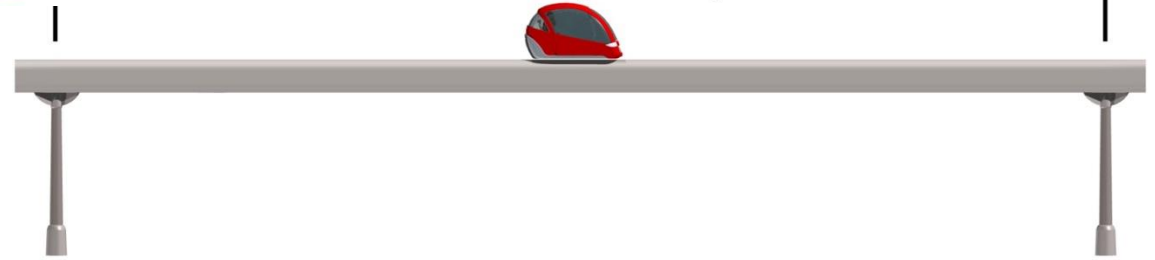
PHYSICAL RESULTS	FINANCIAL RESULTS
<ul style="list-style-type: none"><li>• Dramatic Increase in System Capacity and Efficiency</li><li>• All Locations on Network Accessible</li></ul>	Network Effect Attracts Users and Increases Fare Revenue
<ul style="list-style-type: none"><li>• Network Access Results in Frequent Repeated Use</li><li>• Greater Patronage Makes Business Location More Desirable</li></ul>	Desirability Increases Value of Locations
<ul style="list-style-type: none"><li>• Small Footprint Very Large Throughput</li></ul>	Reduced Capital and Operating Costs and has a Less Disruptive Effect on Business

# SKYWEB EXPRESS

TRANSPORTATION FOR THE 21<sup>ST</sup> CENTURY

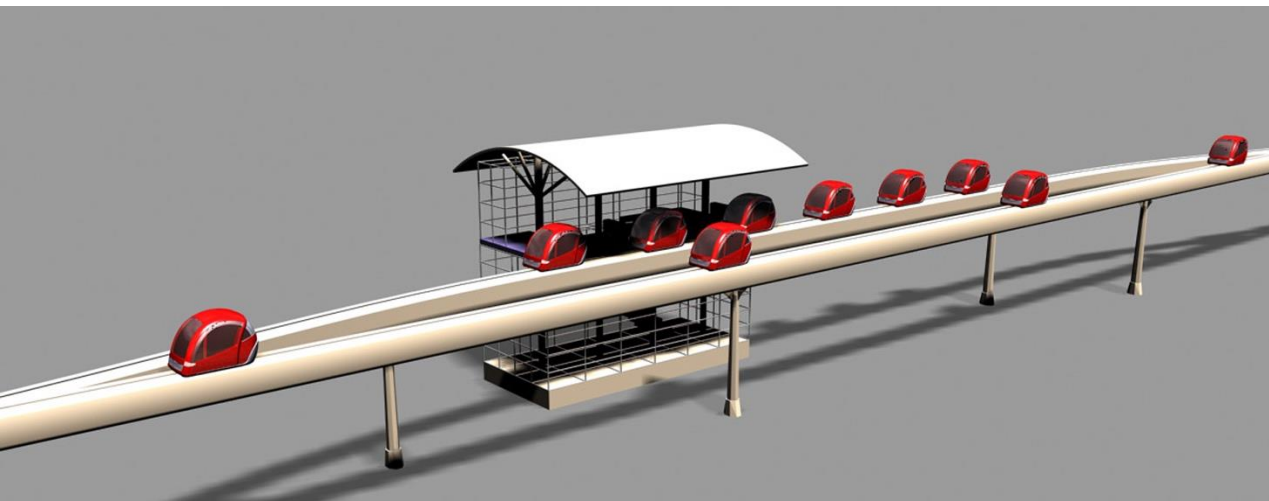


27 m (90 ft)

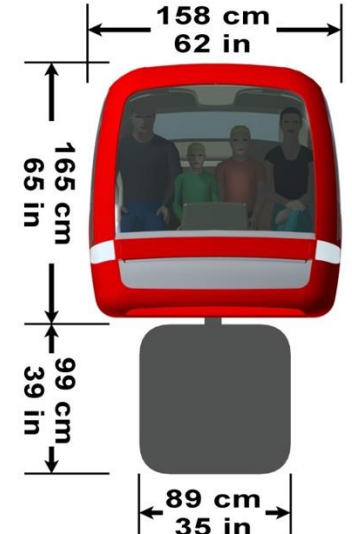


SKYWEB IS **FLEXIBLE, EXPLANABLE** AND **REPEATABLE** TO MEET ALL DEMAND

- Modular – Seamless Expansion
- Repeatable – Implementable in Other Locations
- System Component Designed to:
  - Move Passengers
  - Light Freight
  - Refuse



267 cm  
105 in





# SKYWEB EXPRESS

TRANSPORTATION FOR THE 21<sup>ST</sup> CENTURY



SKYWEB can make Riad a 15 Minute City

- **A System Length of 80 Km**
- **Fleet Size : 2,900**
- **72 Stations**
- **Allows 13,000 Trips per Hour**
- **Moving 39,000 Passengers per Hour.**



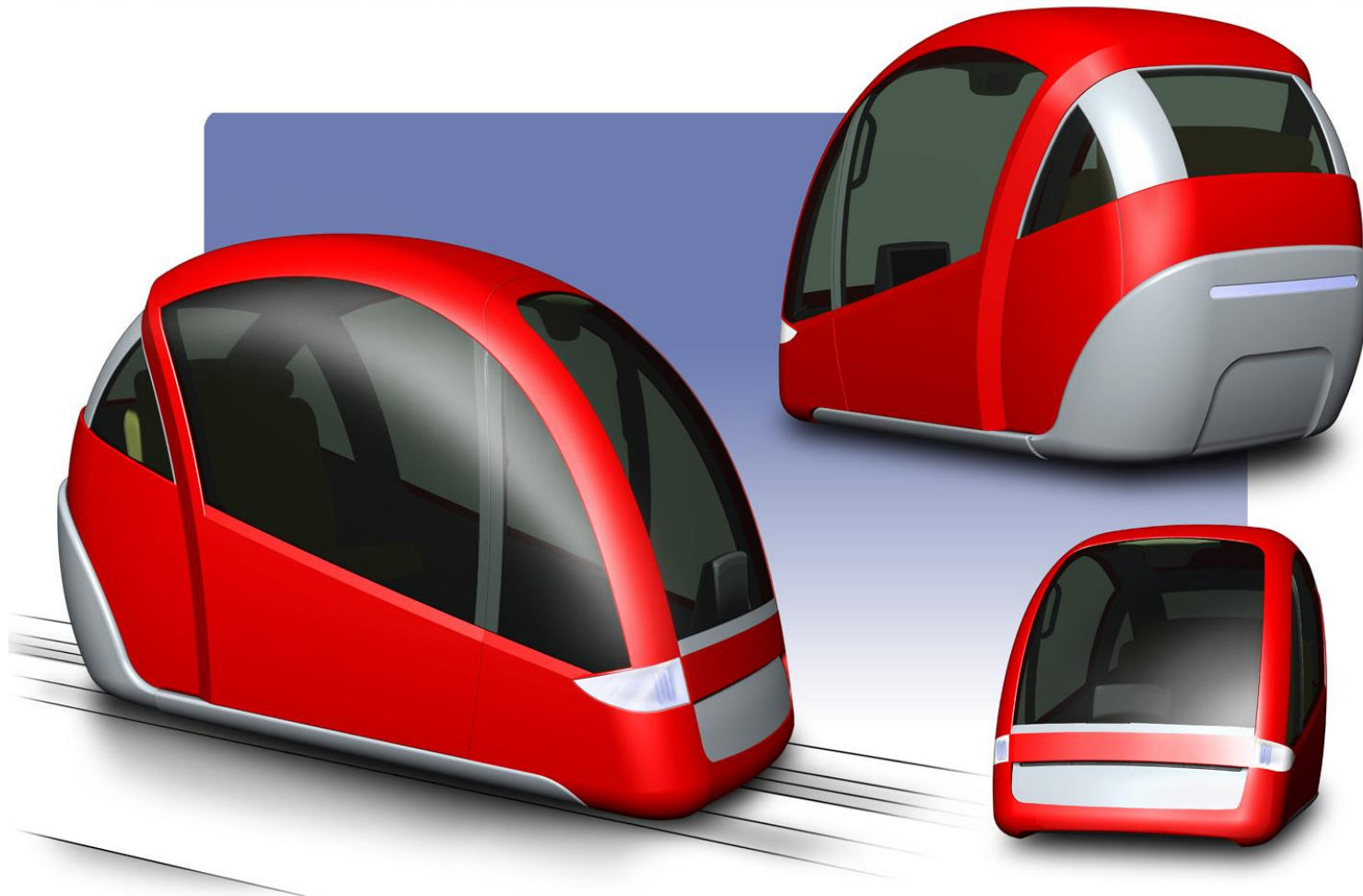


# SKYWEB EXPRESS

TRANSPORTATION FOR THE 21<sup>ST</sup> CENTURY



SKYWEB AUTOMATED TRANSPORTATION **VEHICLE**



# SKYWEB EXPRESS

TRANSPORTATION FOR THE 21<sup>ST</sup> CENTURY



## SKYWEB COMMERCIALIZATION

- Developed State of the Art Software Audited and Tested by Honeywell
- Full Size Prototype System Constructed and Operated
- Built a 1/15 Scale System Using Commercial Control Software
- Engineering Specifications Complete
- Off the Shelf Components



Excerpt from Honeywell Automated Automated Controls Evaluation:

**‘ ... there are no conceptual flaws in the current version of the control system. ... ’**



# SKYWEB EXPRESS

TRANSPORTATION FOR THE 21<sup>ST</sup> CENTURY



## VALUE PROPOSITION

### INCREASE

- Ridership by utility
- Access to the city
- Revenue

### CREATE

- Individual Choice
- Access & Connectivity
- Quality Experience
- Expandable Network
- Economic Value

### ELIMINATE

- Operation & Maintenance Subsidies
- Transfers

### REDUCE

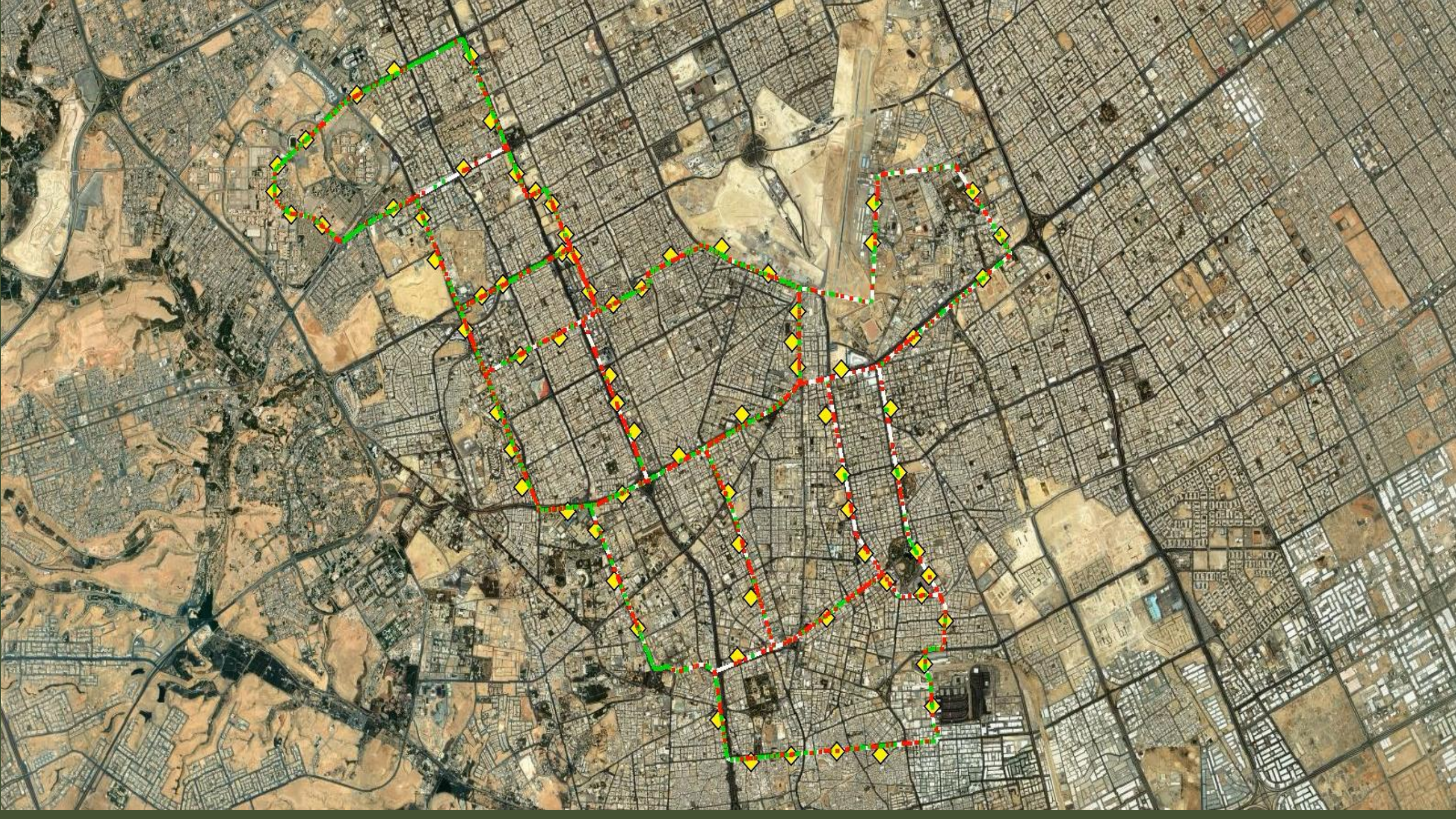
- Construction Time
- Construction Disruption
- Capital Cost
- O & M Costs
- Congestion
- CO2 Emissions



- Al Widyan
- Riyadh Metro
- Qiddya Project
- Mohammed bin Salman City
- King Salman Park
- King Salman Int. Airport
- King Abdullah Financial District
- Warefa
- Expo 2030
- New Murabba
- Sedra Community









# SKYWEB EXPRESS

TRANSPORTATION FOR THE 21<sup>ST</sup> CENTURY



FOR MORE INFO, PLEASE CONTACT:

DR. REGARD YAKOU  
MARIO GALLER  
MIKE LESTER

MRM INTERNATIONAL, INC.

(P) +436764224717 • (W) <https://mrmintl.com> • (E) [mg@mrmintl.com](mailto:mg@mrmintl.com)