

BROCHURE

Specialize in Efficient Machining Solutions

Contact



SHENZHEN JOJOY SEIKO CO.,LTD

Room 07-08, Floor 24, Building C, Huizhi R&D Center, Baoan District,
Shenzhen City, Guangdong Province, China

Tel: 0755-29108299

Fax: 0755-29108266-820

Http: //www.99seiko.com

HUIZHOU JOJOY SEIKO CO.,LTD

Jojoy Seiko Technopark, No.90, Yueming Road, Sanhe Village,
Tonghutown, Zhongkai High-tech Zone, Huizhou City

Tel: 0752-: 36199998

E-mail: js@99seiko.com

All the pictures in this manual are for reference only, and the actual delivery shall prevail;
the company's products are constantly improving, and the information in the manual is subject to change without prior notice.



SHENZHEN JOJOY SEIKO CO.,LTD

CONTENTS

- 1 Company Profile
- 2 Multi-channel Series Engraving and Milling Center
- 3 Multi-spindle Series Engraving and Milling Center for Hardware
- 4 Multi-spindle Series Engraving and Milling Center for Composite Plate
- 5 Double-spindle Series Vertical Machining Center

JOJOY
SEIKO

COMPANY PROFILE

Established in 2012, SHENZHEN JOJOY SEIKO CO., LTD. (hereinafter referred to as "JOJOY SEIKO") is a specialized and sophisticated enterprise that focuses on developing and producing innovative and unique machine tools as well as providing customers with one-stop global sales service and technical support.

The headquarters of JOJOY SEIKO is located in Shenzhen while the factory in Huizhou, Guangdong province, Southern China, it covers a total industrial land of 80,000 square meters for manufacturing several series proven product lines such as multi-spindle machining centers, multi-channel machining centers, 5-axis universal machining centers and etc., with an annual sales volume of 2,000 sets.

Our products are well-known for their distinguished efficiency, which even several times higher than that of universal machining centers of the world's top brands at much lower cost, and thus are well-received by customers all over the world especially in Europe, America, Japan, South Korea and ASEAN countries etc.

In the field of multi-spindle and multi-channel efficient machining solutions, JOJOY SEIKO has always maintained a leading position at home and abroad. Besides, we have been keeping up with the developing trend of manufacturing automation and intelligentization, making much investment in R&D of FMC and FMS to create our own intelligent equipment system.

Even so, with the business philosophy of "Integrity, Innovation, Win-win", we are still striving to improve the efficiency of our machining solutions as we quite know it's closely related customers' interests. In the future, hope we can also provide you with our efficient and quality products, services and support.



Multi-channel Series Engraving and Milling Center



Under the background of increasingly fierce competition in the modern manufacturing and machining industry, we have creatively introduced the Multi-channel Engraving and Milling Center Series with a new structural design to help our customers significantly reduce costs and increase efficiency. It can not only effectively control the costs of purchasing, labor and land etc., but also the efficiency is even several times higher than that of universal machining centers of the world's top brands.

Features

- + The main structure of machine tools consisted of natural marble and cast iron with high stability.
- + Multi-channel design i.e. multiple groups of relatively independent 3-axis system and servo ATC that can achieve multi-station simultaneous machining to improve the efficiency heavily.
- + All servo motors equipped with absolute value bus encoders for accuracy compensation independently.
- + 4-axis or 5-axis rotary table and probe optional for customized requirements.

Typical Machining Cases



Smart wearing parts



Phone parts



Camera parts



Laptop parts

TECHNICAL DATA

	JS-H430-2	JS-A560S-2	JS-D650-2	JS-A540TS-3
Travel & Range				
X-axis travel	365mm	450mm	500mm	500mm
Y-axis travel	420mm	560mm	600mm	400mm
Z-axis travel	180mm×2	180mm×2	200mm×2	200mm×3
Distance from spindle nose to countertop	270-450mm	410mm	210-410mm	250-450mm
Distance between columns	1100mm	1250mm	1420mm	1650mm
Max. workpiece passing height	520mm	440mm	550mm	430mm
Worktable				
Worktable size	450×450mm	565×600mm	565×600mm	500×450mm
Max. loading capacity	60kg	150kg	150kg	100kg
T-slot (Width/Qty./Distance)	12mm/5pcs/80mm	12mm/7pcs/80mm	12mm/5pcs/80mm	12mm/5pcs/80mm
Spindle				
Quantity	2	2	2	3
Max. spindle speed	40000rpm	36000rpm	36000rpm	36000rpm
Spindle taper	ISO 20	ISO 25	ISO 25	ISO 25
Spindle power	4kw	6kw	6kw	6kw
Drive type	Electric	Electric	Electric	Electric
Spindle cooling system	Water cooling	Water cooling	Water cooling	Water cooling
Controller & Servo System				
CNC controller	Syntec	Syntec	Syntec	Syntec
X/Y servo motor power	0.75/0.75kw	0.85/0.85kw	1.3/1.3kw	0.85/0.85kw
Z-axis servo motor power	0.75kw×2	0.75kw×2	0.75kw×2	0.75kw×3
Servo ATC				
Capacity	15T×2	24T×2	21T×2	24T×3
Max. tool diameter	10mm	16mm	16mm	16mm
Max. tool length	40mm	60mm	60mm	60mm
Feed Rate				
X/Y/Z rapid traverse	15000mm/min	15000mm/min	15000mm/min	15000mm/min
X/Y/Z cutting speed	9000mm/min	9000mm/min	9000mm/min	9000mm/min
Accuracy				
X/Y/Z positioning accuracy	±0.005/300mm	±0.005/300mm	±0.005/300mm	±0.005/300mm
X/Y/Z repeatability	±0.003/300mm	±0.003/300mm	±0.003/300mm	±0.003/300mm
Other Data				
Air source required	6.5kgf/cm ²	6.5kgf/cm ²	6.5kgf/cm ²	6.5kgf/cm ²
Gross weight	2200kg	4000kg	6200kg	5000kg
Overall dimension (L×W×H)	1680×1400×1850mm	2130×2160×2280mm	2520×2240×2050mm	2630×2480×3370mm
Rated voltage	AC 380V	AC 380V	AC 380V	AC 380V
Total power	14kw	18kw	20kw	28kw

Basic Accessories

+ SYNTEC CNC controller	+ Electric cabinet cooling system
+ ATC	+ Tool setter
+ Spindle cooling system	+ Handwheel
+ Automatic lubricating system	+ Coolant tank

Optional Accessories

+ WEIHONG/HNC CNC controller	+ Variable ATC capacity
+ 4-axis rotary table	+ Oil mist collector
+ 5-axis rotary table	+ Filter system
+ Probe for workpiece set-up & inspection	+ Chip conveyor
+ Variable spindle power/speed/torque	

Multi-spindle Series Engraving and Milling Center

FOR HARDWARE



Under the background of increasingly fierce competition in the modern manufacturing and machining industry, we have creatively introduced the Multi-spindle Engraving and Milling Center Series for Hardware with a new structural design to help our customers significantly reduce costs and increase efficiency. It can not only effectively control the costs of purchasing, labor and land etc., but also the efficiency is even several times higher than that of universal machining centers of the world's top brands.

Features

- + The main structure of machine tools consisted of natural marble and cast iron or only cast iron with high stability and rigidity.
- + Multi-spindle design i.e. multiple groups of relatively independent servo Z-axis and servo ATC can achieve multi-purpose simultaneous machining to improve the efficiency heavily.
- + All servo motors equipped with absolute value bus encoders for accuracy compensation independently.
- + 4-axis rotary table, tapping and probe optional for customized requirements .

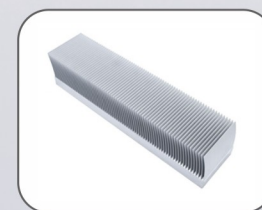
Typical Machining Cases



Phone parts



Laptop parts



Radiator parts



Battery parts

TECHNICAL DATA

	JS-A850-4	JS-A1045-3	JS-A1280T-4	JS-A1280-5	JS-A1280-6
Travel & Range					
X-axis travel	240mm	350mm	350mm	300mm	240mm
Y-axis travel	550mm	450mm	450mm	450mm	450mm
Z-axis travel	120mm×4	180mm×3	250mm×4	250mm×5	200mm×6
Distance from spindle nose to countertop	180mm	280mm	150-400mm	150-400mm	60-260mm
Worktable					
Worktable size	840×460mm	1000×460mm	1280×470mm	1280×470mm	1280×470mm
Max. loading capacity	60kg	150kg	200kg	200kg	200kg
T-slot (Width/Qty./Distance)	12/5pcs/80	12mm/5pcs/80mm	14mm/5pcs/80mm	14mm/5pcs/80mm	14mm/5pcs/80mm
Spindle					
Quantity	4	3	4	5	6
Max. spindle speed	40000rpm	36000rpm	30000rpm	36000rpm	40000rpm
Spindle taper	ISO 20	ISO 25	BT30	ISO 25	ISO 20
Spindle power	4kw	6kw	7.5kw	6.5kw	4kw
Drive type	Electric	Electric	Electric	Electric	Electric
Distance between spindles	210mm	320mm	320mm	260mm	210mm
Spindle cooling system	Water cooling	Water cooling	Water cooling	Water cooling	Water cooling
Controller & Servo System					
CNC controller	Syntec	Syntec	Syntec	Syntec	Syntec
X/Y servo motor power	1.3/1.3kw	1.3/1.3kw	1.8/1.8kw	1.8/1.8kw	1.3/1.8kw
Z-axis servo motor power	0.75kw×4	0.75kw×3	1.8kw×4	1.3kw×5	0.75kw×6
Servo ATC					
Capacity	16T×4	15T×3	20T×4	24T×5	25T×6
Max. tool diameter	10mm	13mm	16mm	13mm	10mm
Max. tool length	40mm	60mm	80mm	60mm	40mm
Feed Rate					
X/Y/Z rapid traverse	15000mm/min	15000mm/min	30000mm/min	30000mm/min	25000mm/min
X/Y/Z cutting speed	9000mm/min	9000mm/min	10000mm/min	10000mm/min	10000mm/min
Accuracy					
X/Y/Z positioning accuracy	±0.005/300mm	±0.005/300mm	±0.005/300mm	±0.005/300mm	±0.005/300mm
X/Y/Z repeatability	±0.003/300mm	±0.003/300mm	±0.003/300mm	±0.003/300mm	±0.003/300mm
Other Data					
Air source required	6.5kgf/cm ²	6.5kgf/cm ²	6.5kgf/cm ²	6.5kgf/cm ²	6.5kgf/cm ²
Gross weight	3600kg	4800kg	5000kg	5200kg	4700kg
Overall dimension (L×W×H)	1850×2400×2100mm	1850×2400×2350mm	2150×2880×2600mm	2150×2880×2250mm	2150×2880×2250mm
Rated voltage	AC 380V	AC 380V	AC 380V	AC 380V	AC 380V
Total power	22kw	25kw	45kw	45kw	33kw

Basic Accessories

- + SYNTEC CNC controller
- + Servo ATC
- + Spindle cooling system
- + Automatic lubricating system
- + Electric cabinet cooling system
- + Tool setter
- + Handwheel
- + Coolant tank

Optional Accessories

- + WEIHONG/HNC CNC controller
- + 4-axis rotary table
- + Probe for workpiece set-up & inspection
- + Variable spindle power/speed/torque
- + Tapping function
- + Variable ATC capacity
- + Oil mist collector
- + Chip conveyor

Multi-spindle Series

Engraving and Milling Center

COMPOSITE PLATE



Under the background of increasingly fierce competition in the modern manufacturing and machining industry, we have creatively introduced the Multi-spindle Engraving and Milling Center Series for Composite Plate with a new structural design to help our customers significantly reduce costs and increase efficiency. It can not only effectively control the costs of purchasing, labor and land etc., but also the efficiency is even several times higher than that of universal machining centers of the world's top brands.

Features

- + The main structure of machine tools consisted of natural marble and cast iron with high stability.
- + Multi-spindle design i.e. multiple groups of relatively independent servo Z-axis and servo ATC can achieve multi-purpose simultaneous machining to improve the efficiency heavily.
- + All servo motors equipped with absolute value bus encoders for accuracy compensation independently.
- + CCD and probe optional for customized requirements.

Typical Machining Cases



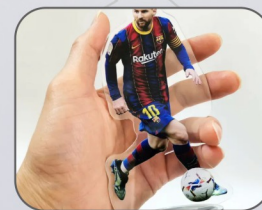
Phone parts



Laptop parts



Camera parts



Acrylic statues

TECHNICAL DATA

	JS-T660-2	JS-660S-3	JS-E990-3
Travel & Range			
X-axis travel	380mm	280mm	330mm
Y-axis travel	520mm	520mm	520mm
Z-axis travel	130mm×2	120mm×3	120mm×3
Distance from spindle nose to countertop	170mm	180mm	150mm
Worktable			
Worktable size	700×500mm	840×500mm	990×500mm
Max. loading capacity	100kg	100kg	100kg
Spindle			
Quantity	2	3	3
Max. spindle speed	60000rpm	60000rpm	60000rpm
Spindle taper	ISO 10	ISO 10	ISO 10
Spindle power	2.5kw	2.5kw	2.5kw
Drive type	Electric	Electric	Electric
Spindle cooling system	Water cooling	Water cooling	Water cooling
Controller & Servo System			
CNC controller	Syntec	Syntec	Syntec
X/Y servo motor power	0.75/0.75kw	0.75/0.75kw	0.75/0.75kw
Z-axis servo motor power	0.4kw×2	0.4kw×3	0.4kw×3
Servo ATC			
Capacity	6T×2	6T×3	6T×3
Max. tool diameter	6mm	6mm	6mm
Max. tool length	30mm	30mm	30mm
Feed Rate			
X/Y/Z rapid traverse	15000mm/min	15000mm/min	15000mm/min
X/Y/Z cutting speed	9000mm/min	9000mm/min	9000mm/min
Accuracy			
X/Y/Z positioning accuracy	±0.005/300mm	±0.005/300mm	±0.005/300mm
X/Y/Z repeatability	±0.003/300mm	±0.003/300mm	±0.003/300mm
Other Data			
Air source required	6.5kgf/cm ²	6.5kgf/cm ²	6.5kgf/cm ²
Gross weight	2100kg	2500kg	2800kg
Overall dimension (L×W×H)	1728×1771×1947mm	1400×1620×1950mm	1750×1700×2250mm
Rated voltage	AC 380V	AC 380V	AC 380V
Total power	7.5kw	10kw	10kw

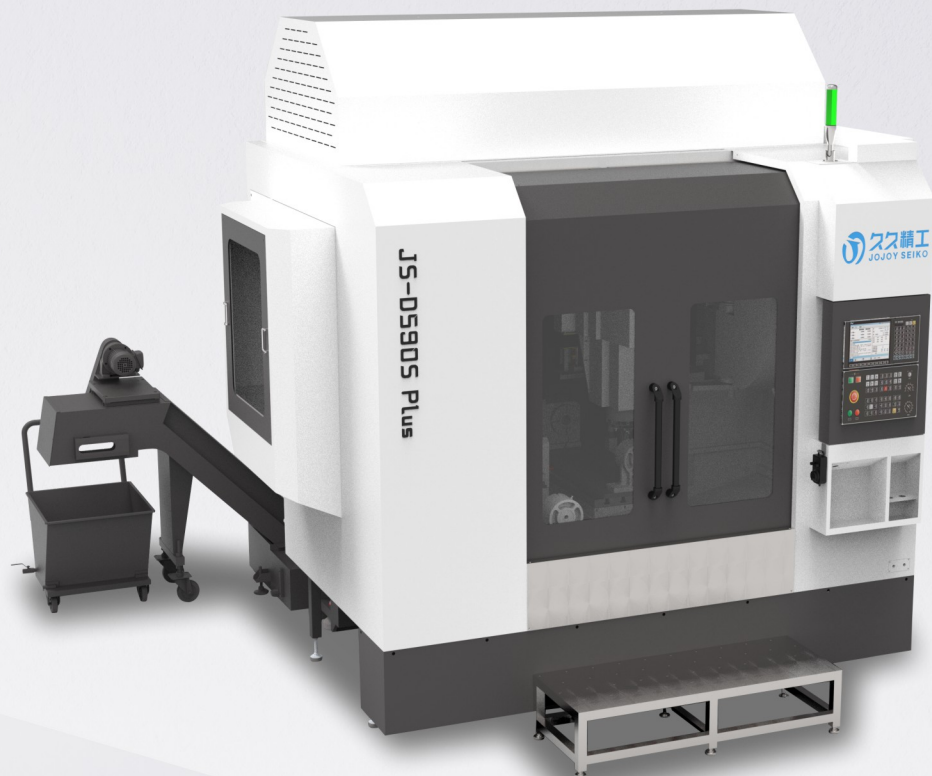
Basic Accessories

- + SYNTEC CNC controller
- + Servo ATC
- + Spindle cooling system
- + Automatic lubricating system
- + Electric cabinet cooling system
- + Tool setter
- + Handwheel
- + Coolant tank

Optional Accessories

- + WEIHONG/HNC CNC controller
- + CCD i.e. charged-coupled device
- + Probe for workpiece set-up & inspection
- + Variable spindle power/speed/torque
- + Variable ATC capacity
- + Oil mist collector

Double-spindle Series Vertical Machining Center



Under the background of increasingly fierce competition in the modern manufacturing and machining industry, we have creatively introduced the Double-spindle Vertical Machining Center Series with a new structural design to help our customers significantly reduce costs and increase efficiency. It can not only effectively control the costs of purchasing, labor and land etc., but also the efficiency is even several times higher than that of universal machining centers of the world's top brands.

Features

- + The main structure of machine tools consisted of only cast iron material HT300 or QT500 with high rigidity.
- + Multi-spindle or multi-channel design i.e. multiple groups of relatively independent servo Z-axis or 3-axis servo system and servo ATC can achieve multi-purpose or multi-station simultaneous machining to improve the efficiency heavily.
- + All servo motors equipped with absolute value bus encoders for accuracy compensation independently.
- + 4-axis rotary table, 5-axis rotary table and probe optional for customized requirements .

Typical Machining Cases



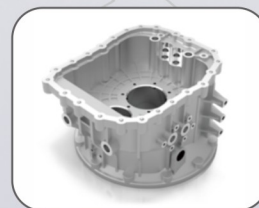
Torsion bars



Molds



Wheel hub



Transmissions

TECHNICAL DATA

	JS-A4540T-2	JS-D590S-2	JS-D1360-2
Travel & Range			
X-axis travel	450mm	500mm	700mm
Y-axis travel	400mm	800mm	650mm
Z-axis travel	300mm×2	450mm×2	650mm×2
Distance from spindle nose to countertop	125-425mm	150-600mm	150-800mm
Worktable			
Worktable size	750×420mm	500×1100mm	1300×600mm
Max. loading capacity	250kg	400kg	600kg
T-slot (Width/Qty./Distance)	14mm/5pcs/80mm	18mm/5pcs/80mm	18mm/5pcs/100mm
Spindle			
Quantity	2	2	2
Distance between spindles	360mm	600mm	680mm
Max. spindle speed	20000rpm	12000rpm	10000rpm
Spindle taper	BT30	BT40	BT40
Spindle power	5.5kw	7.5kw	7.5/11kw
Drive type	Direct-drive	Direct-drive	Direct-drive
Spindle cooling system	Oil cooling (Opt.)	Oil cooling (Opt.)	Oil cooling (Opt.)
Controller & Servo System			
CNC controller	Syntec	Syntec	Syntec
X/Y servo motor power	2.3/2.3kw	4.6/3.6kw	4.6/3.6kw
Z-axis servo motor power	2.3kw×2	4.6kw×2	4.6kw×2
Servo ATC			
Capacity	21T×2	24T×2	24T×2
Max. tool diameter	60mm	78mm	80mm
Max. tool length	150mm	250mm	300mm
Max. tool weight	3kg	8kg	8kg
Feed Rate			
X/Y/Z rapid traverse	48000mm/min	36000mm/min	36000mm/min
X/Y/Z cutting speed	12000mm/min	10000mm/min	10000mm/min
Accuracy			
X/Y/Z positioning accuracy	±0.005/300mm	±0.005/300mm	±0.005/300mm
X/Y/Z repeatability	±0.003/300mm	±0.003/300mm	±0.003/300mm
Other Data			
Air source required	6kgf/cm ²	6kgf/cm ²	6kgf/cm ²
Gross weight	3600kg	7500kg	7500kg
Overall dimension (L×W×H)	1760×2460×2550mm	3120×2450×2680mm	2730×2925×2920mm
Rated voltage	AC 380V	AC 380V	AC 380V
Total power	30kw	35kw	35kw

Basic Accessories

+ SYNTEC CNC controller	+ Electric cabinet cooling system
+ Servo ATC	+ Chip conveyor
+ Spindle cooling system	+ Handwheel
+ Automatic lubricating system	+ Coolant tank

Optional Accessories

+ WEIHONG/HNC CNC controller	+ Tool setter
+ 4-axis rotary table or 5-axis rotary table	+ Variable ATC capacity
+ Coolant through spindle	+ Variable column height
+ Probe for workpiece set-up & inspection	+ Oil mist collector
+ Variable spindle power/speed/torque	+ Hydraulic unit