



PTS - Institut für Fasern & Papier gGmbH

Fibre based solutions for tomorrow's products



Testing
Services



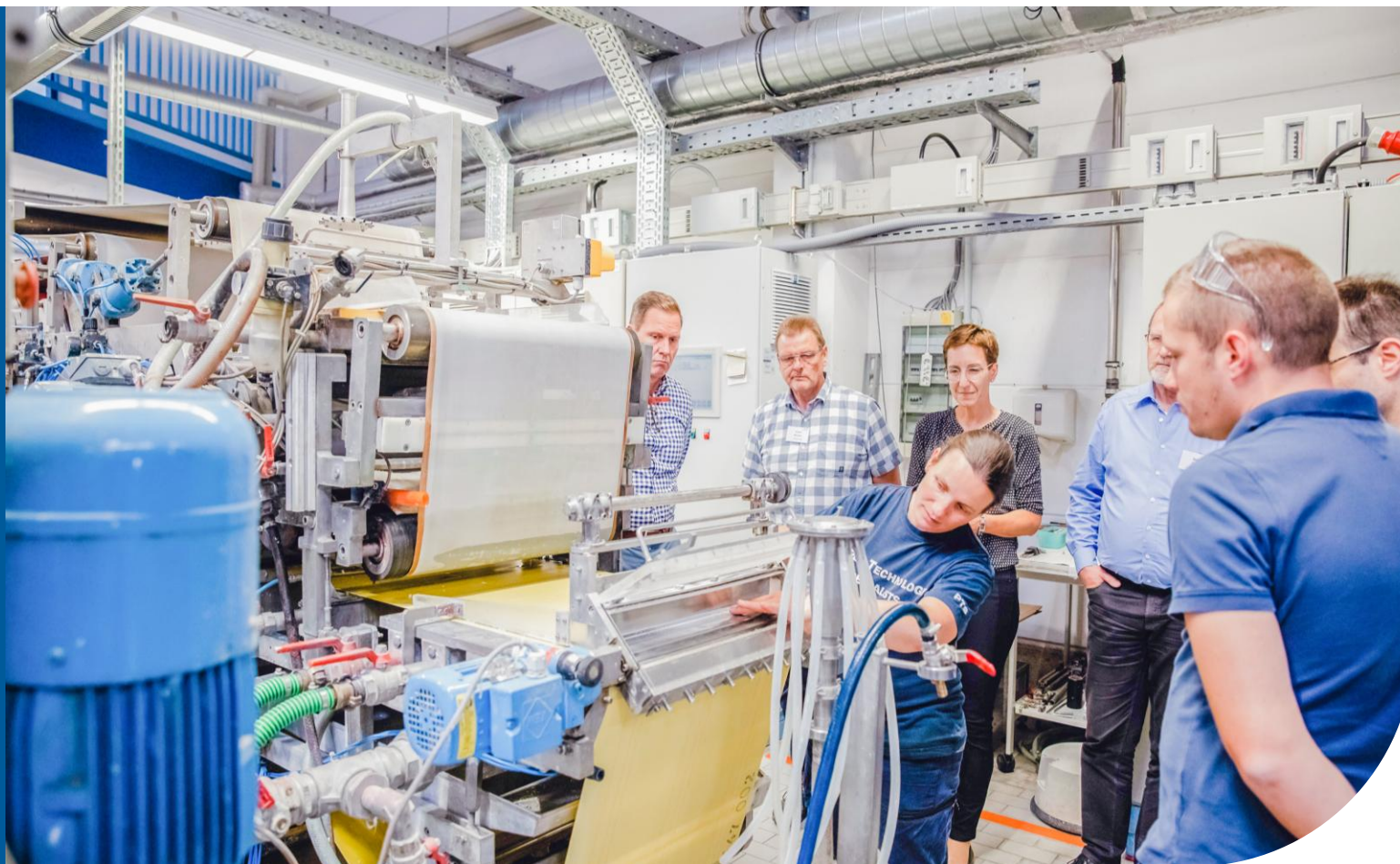
Industrial
Solutions



Research



Events



About us

Applied research institute



85
Employees



800 seminar
participants *



30 Research
Projects*



7,5 Mio. €
Revenue*



non-profit &
neutral

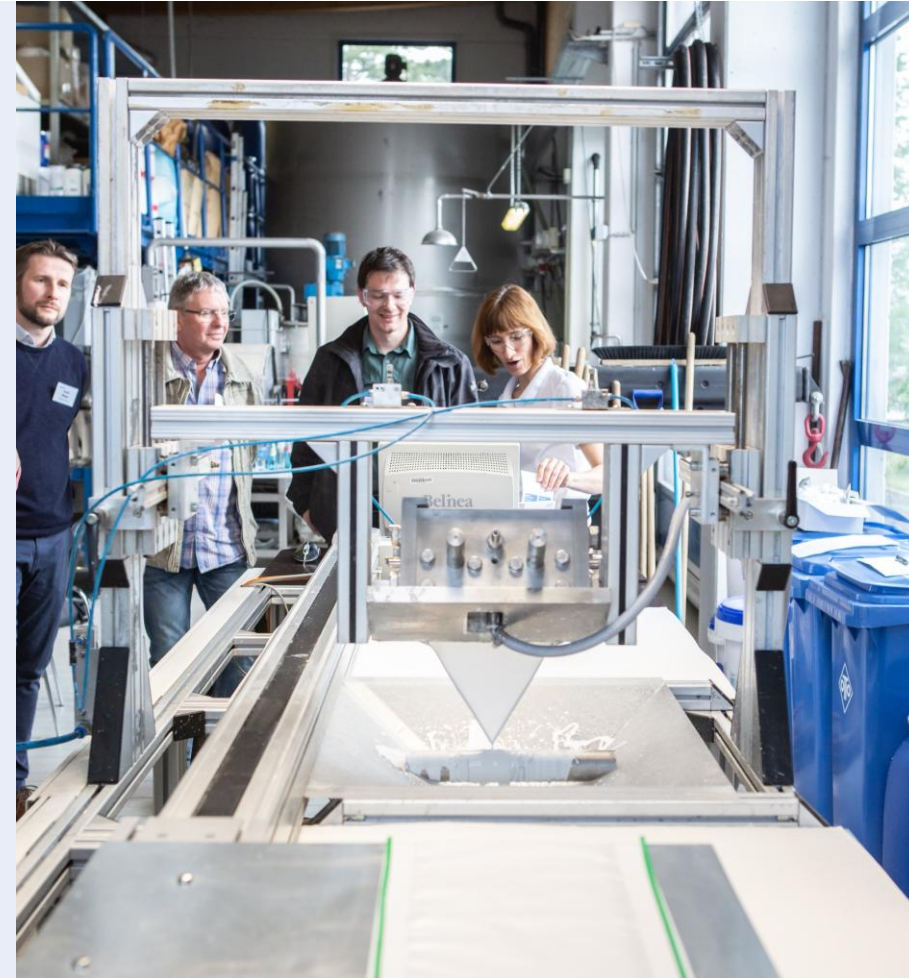


Partner in National &
European networks

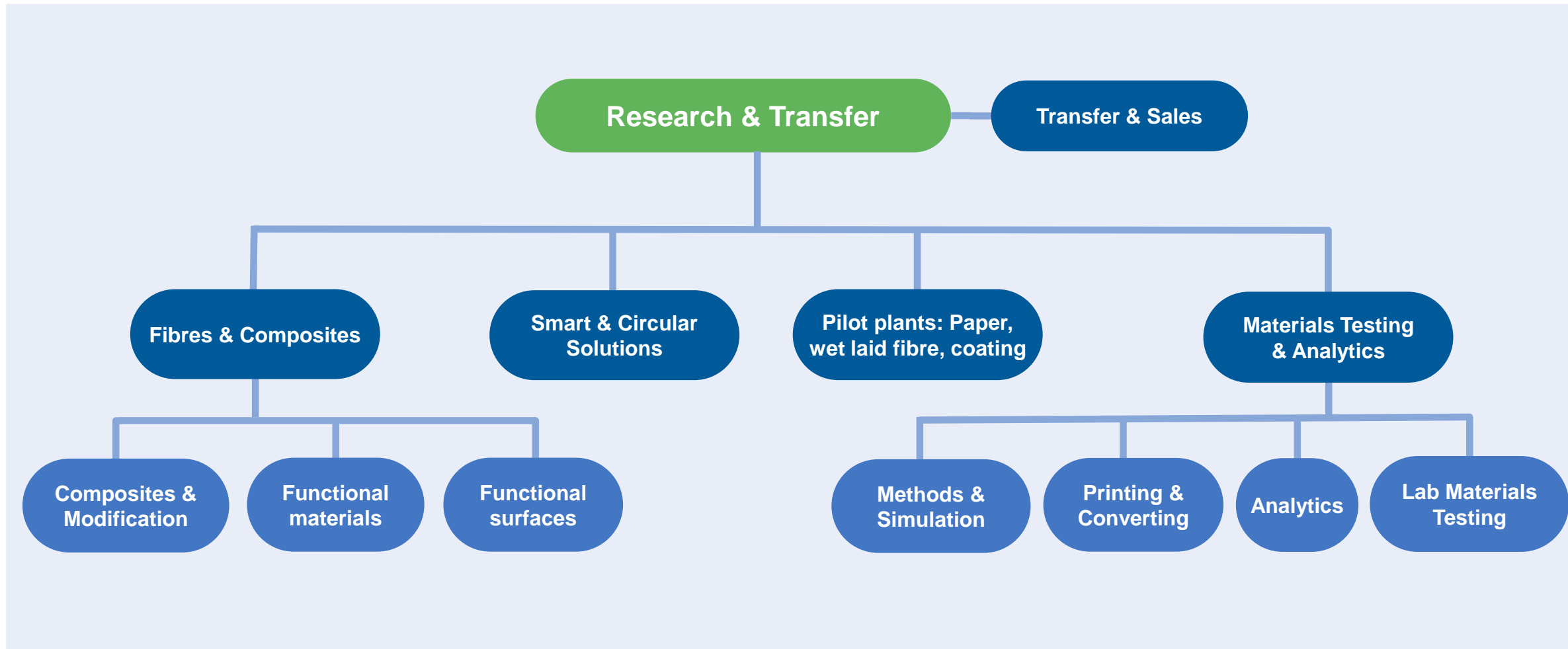


500 test methods
Accredited
Laboratory

** per year*



Organisation Chart: Research & Transfer



PTS Research in Heidenau (near Dresden)



Use our networks and clusters

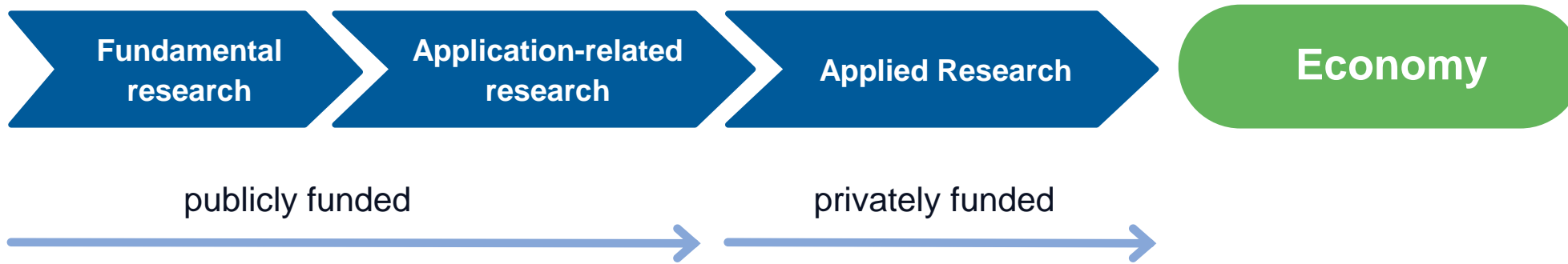


In developing innovative solutions to complex challenges efficiently, cooperation in networks is absolutely essential.

We have a good national and international network and we cooperate with universities, colleges, research institutions, associations and companies, for example:



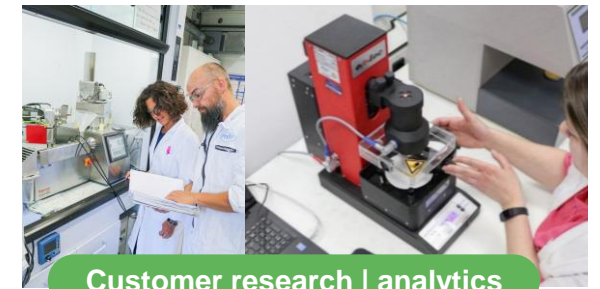
ZUSE community: PTS as a founding member



PTS Business Model



Fibre-based solutions for tomorrow's products



Customer research | analytics



Further education | Consulting



DOMAS | PBS | AP-Monitor |
RCP Monitor

- We consider social developments and technological trends, identify challenges and create sustainable solutions for our partners.
- In the process, we use the most innovative processes in fibre, paper and wetlaid nonwoven technology as well as functionalisation and processing as an open and at the same time digital platform to make a substantial contribution to a sustainable bio-based circular economy with modern fibre-based solutions.
- Fibre based solutions for tomorrow's products.



Development of **resource-efficient processes** and **fibre based products** that follow the requirements of **recyclability** and **environmental compatibility**.



Development of **functional surfaces** and **processing properties** for tomorrow's paper-based products.



Paper technology platform for high-performance materials in energy storage, high-temperature filtration, lightweight construction, ...

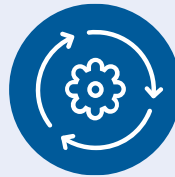


Description of the **product life cycle** for paper- and fibre based products by means of state-of-the-art digitisation solutions.

PTS Business divisions



Fibres & Composites



Smart & Circular Solutions



Materials Testing & Analytics



Pilot Plant



Events



Fibres & Composites



- Pulp analysis and raw material selection
- Bio-based paper additives
- High-performance materials produced by paper technology
- Chemical modification of fibre materials
- Functional surfaces



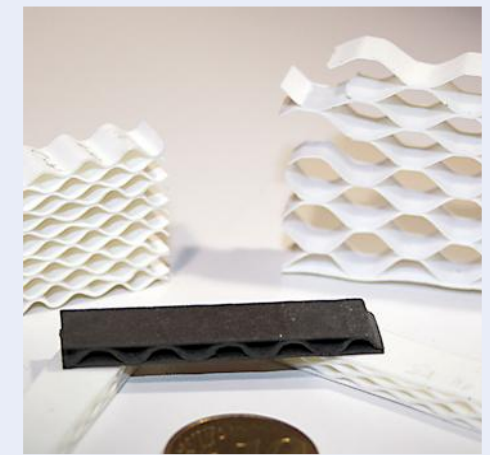
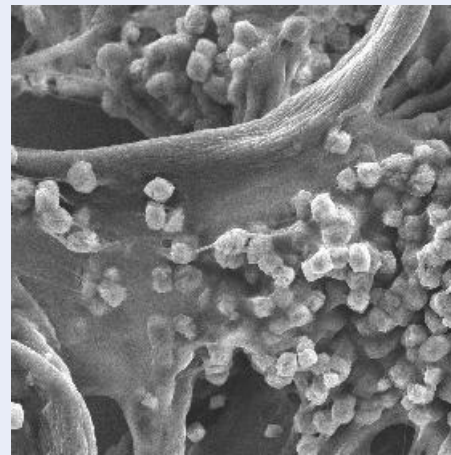
Contact

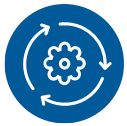
Dr. Martin Zahel

T +49 3529 551-674

M 0176 12146350

E martin.zahel@ptspaper.de





Smart & Circular Solutions



- Circularity of fibre based products
- Recoverd Paper Management
- Assessment of the recyclability of fibre based materials
- Optimizing stock preparation processes
- Quality management of fibre stock and end product
- Innovative measurement: PaperBaleSensor (PBS), DOMAS, RCP Monitor



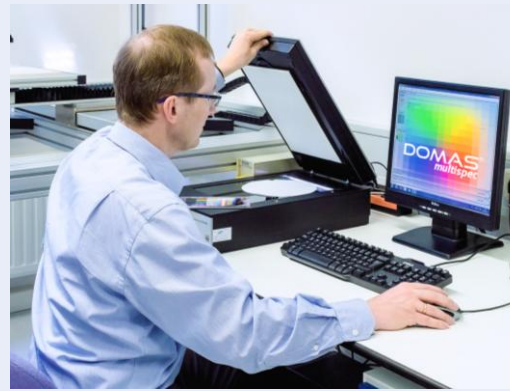
Contact

Lydia Tempel

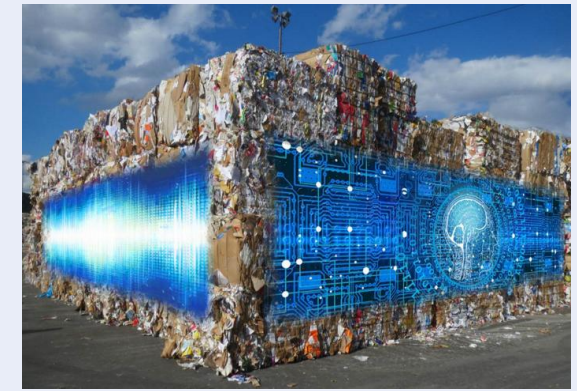
T +49 3529 551-721

M +49 176 12146318

E lydia.tempel@ptspaper.de



PFR Calculator			
Recipe			
Grammage	1.02.00	1.04.01	1.11.00
00 g/m²	100 %	0 %	0 %
Composition			
	Total	Detail	Detail
Newspaper	0 %	0 %	21 %
Magazine	10 %	0 %	10 %
Advertising print	12 %	0 %	29 %
Other graphical paper	10 %	0 %	13 %
Corrugated board brown	25 %	50 %	0 %
Corrugated board white	10 %	35 %	2 %
Other packaging paper	10 %	10 %	5 %
Total	100 %	100 %	100 %
Calculate			
Initial Pulp Properties			
Schopper-Riegler	42	SR	
Ash Content (620°C)	20	%	
Bending Stiffness	0.339	Nmm	
SCF-index	3.025	Nmm/g	
Opacity	100	%	
Brightness (R457)	55	%	





Testing Services & Analytics



- Accredited laboratory according to DIN EN ISO/IEC 17025:2018
- Testing of physical and chemical properties
- Packaging coding, printability & processing
- Evaluation of food compliance
- Methods for simulation and modelling
- Document Security, CEPI Comparative Testing Service, Test equipment service



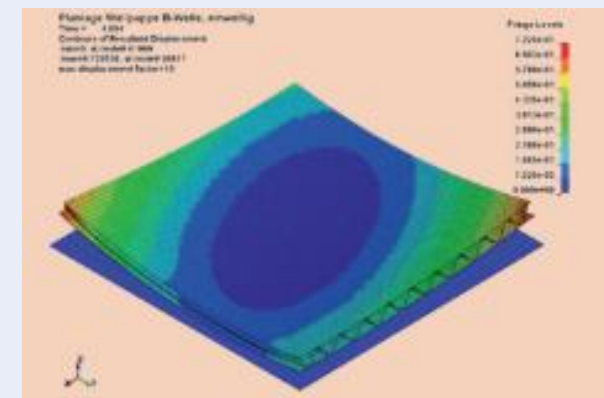
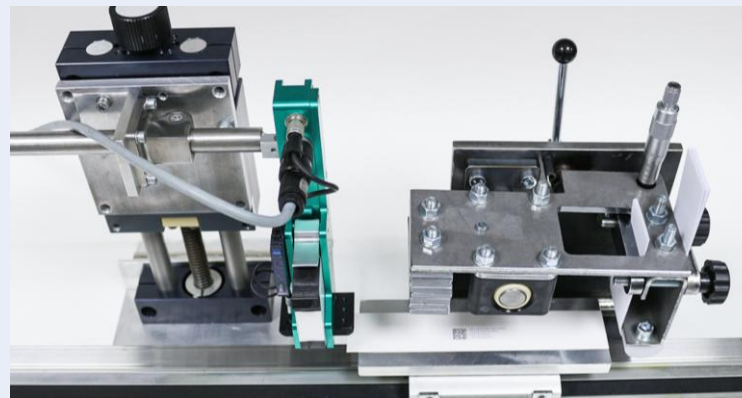
Contact

Dr. Antje Harling

T +49 3529 551-663

M +49 176 12146663

E antje.harling@ptspaper.de





Pilot plants: Paper, wet laid fibre, coating



Contact

Steffen Schramm

T +49 3529 551-679

M +49 176 12146140

E steffen.schramm@ptspaper.de

- Pilot paper machine with stock preparation
- Wetlaid technology with spunlace bonding
- Trial coater and curtain coater
- Reactive extrusion of fibre materials





PTS Academy: Events & Further Education



- Events on current topics from the research areas
- Combining know-how from companies, science and associations
- Formats: Symposia and conferences, workshops & seminars, online and Onsite



Contact

Celine Farr

T +49 3529 551-704

E ptsacademy@ptspaper.de



Upcoming dates:

www.ptspaper.com/events

We look forward to your request!



Managing Director

Dr. Thorsten Voß

T +49 3529 551-782
M +49 162 1039895
E thorsten.voss@ptspaper.de



Business Division
Manager

Materials Testing
& Analytics

Dr. Antje Harling

T +49 3529 551-663
M +49 176 12146663
E antje.harling@ptspaper.de



Business Division
Manager

Smart &
Circular Solutions

Lydia Tempel

T +49 3529 551-721
M +49 176 12146318
E lydia.tempel@ptspaper.de



Business Division
Manager

Pilot plants Paper / Wet
Nonwovens / Coatings

Steffen Schramm

T +49 3529 551-679
M +49 176 12146140
E steffen.schramm@ptspaper.de



Business Division
Manager

Fibres &
Composites

Dr. Martin Zahel

T +49 3529 551-674
M +49 176 12146350
E martin.zahel@ptspaper.de



Sales Manager

Jörg Hempel

T +49 3529 551-659
M +49 172 8695459
E joerg.hempel@ptspaper.de