



AREI

**Institute of Agricultural Resources  
and Economics (AREI)**

**Latvia**

**2025**

# **AREI Mission and Vision:**

**To promote sustainable development of the bioeconomy and rural areas  
by providing scientifically based solutions.**



# AREI Key Indicators:



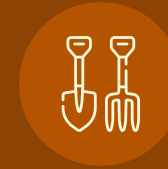
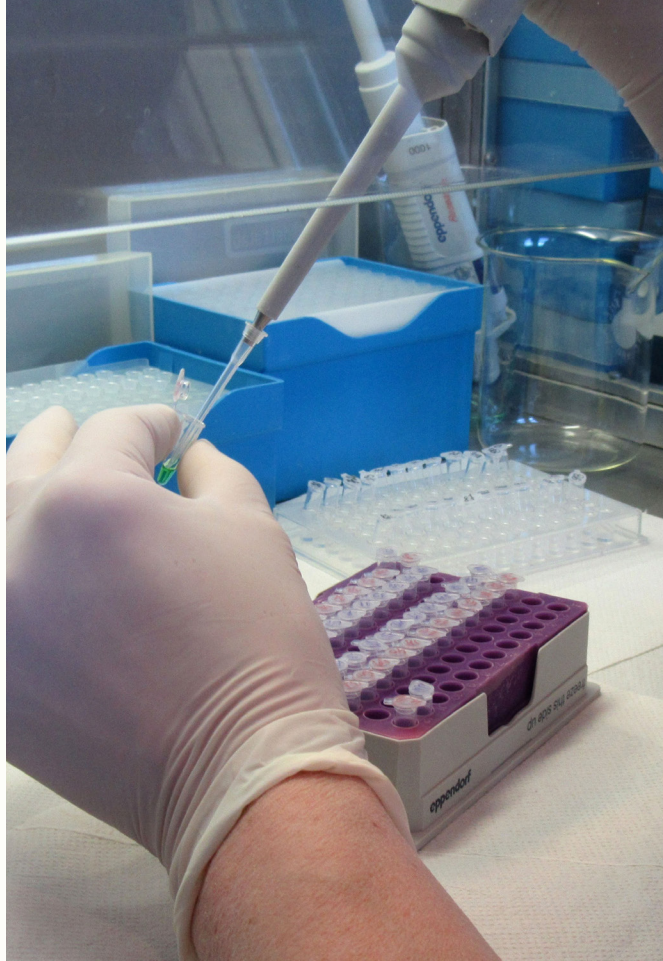
## Scientific personnel

~20 PhD scientists  
~42 researchers and scientific assistants



## Total staff

at the institute: ~170



## Agricultural land

used: ~470 ha



## Annually implements

~80-100 projects



## Financial turnover

in 2023: 9  
million euros

# AREI more than 100 years of experience

through the consolidation of four independent scientific institutes.

**(1913)**

Cēsis Experiment Station

**(1922)**

Stende State Breeding  
Station

**(1988)**

Latvian State  
Agrarian Economics  
Institute

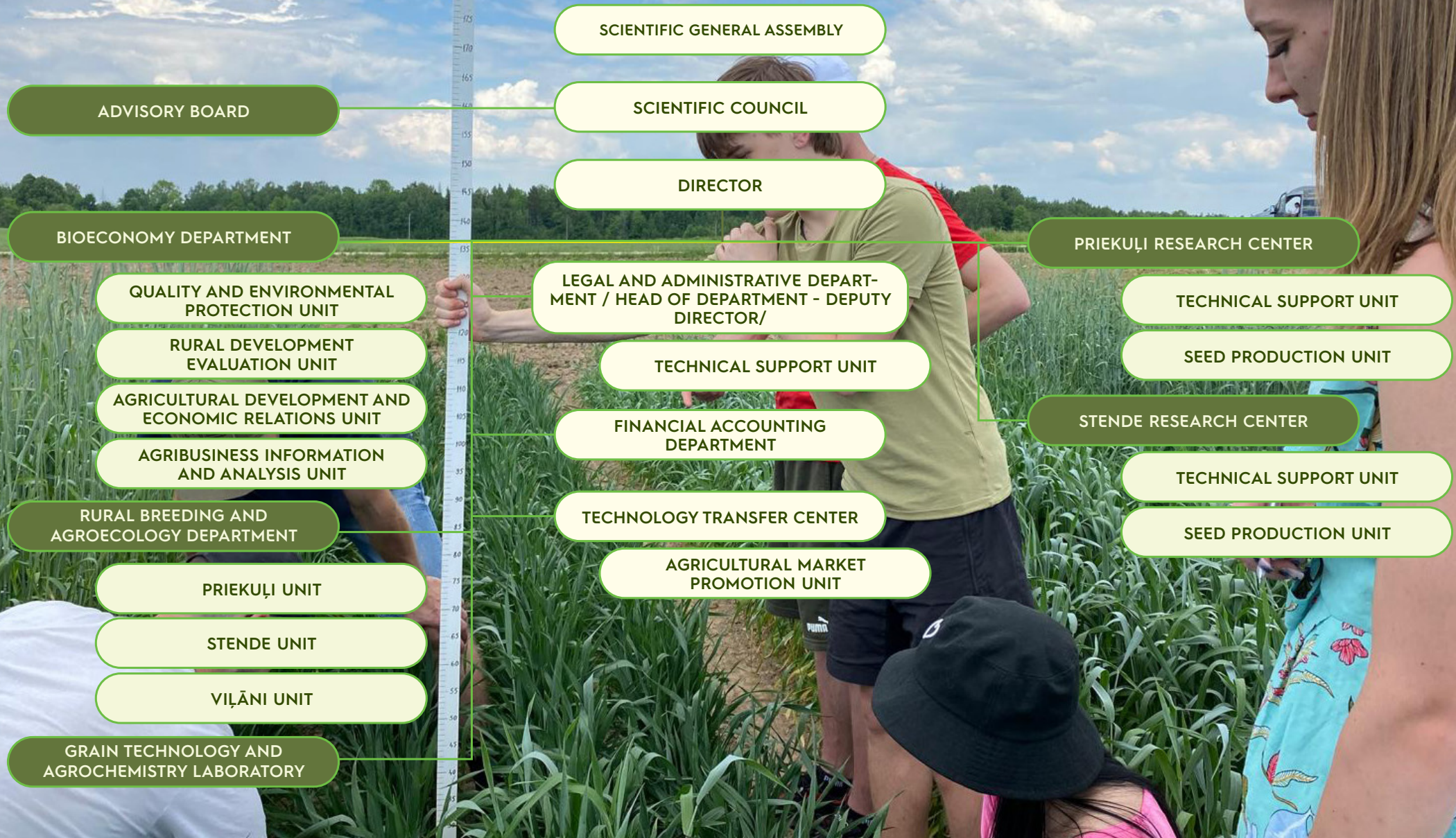
**(2016)**

Viļāni





# AREI Structure



# AREI Areas of Operation

## Two scientific departments:

### 1. Crop Breeding and Agroecology Department:

- Crop breeding and genetic research
- Agroecological and agronomic studies in integrated and organic farming
- Research on yield quality and efficient use of crops

### 2. Bioeconomy Department:

- Studies on sustainable territorial development
- Studies on the sustainable development of bioresource sectors and the competitiveness of rural farms



## Technology Transfer Center (TTC):

The center's functions include knowledge transfer on AREI's research and new varieties, collaboration with scientific institutions, consortia, NGOs, and businesses, supporting AREI scientists in project preparation, and promoting recognition in Latvia and abroad.



## Research Centers (PPC):

They provide infrastructure services for scientific work and carry out seed production, propagating high-category seed material.

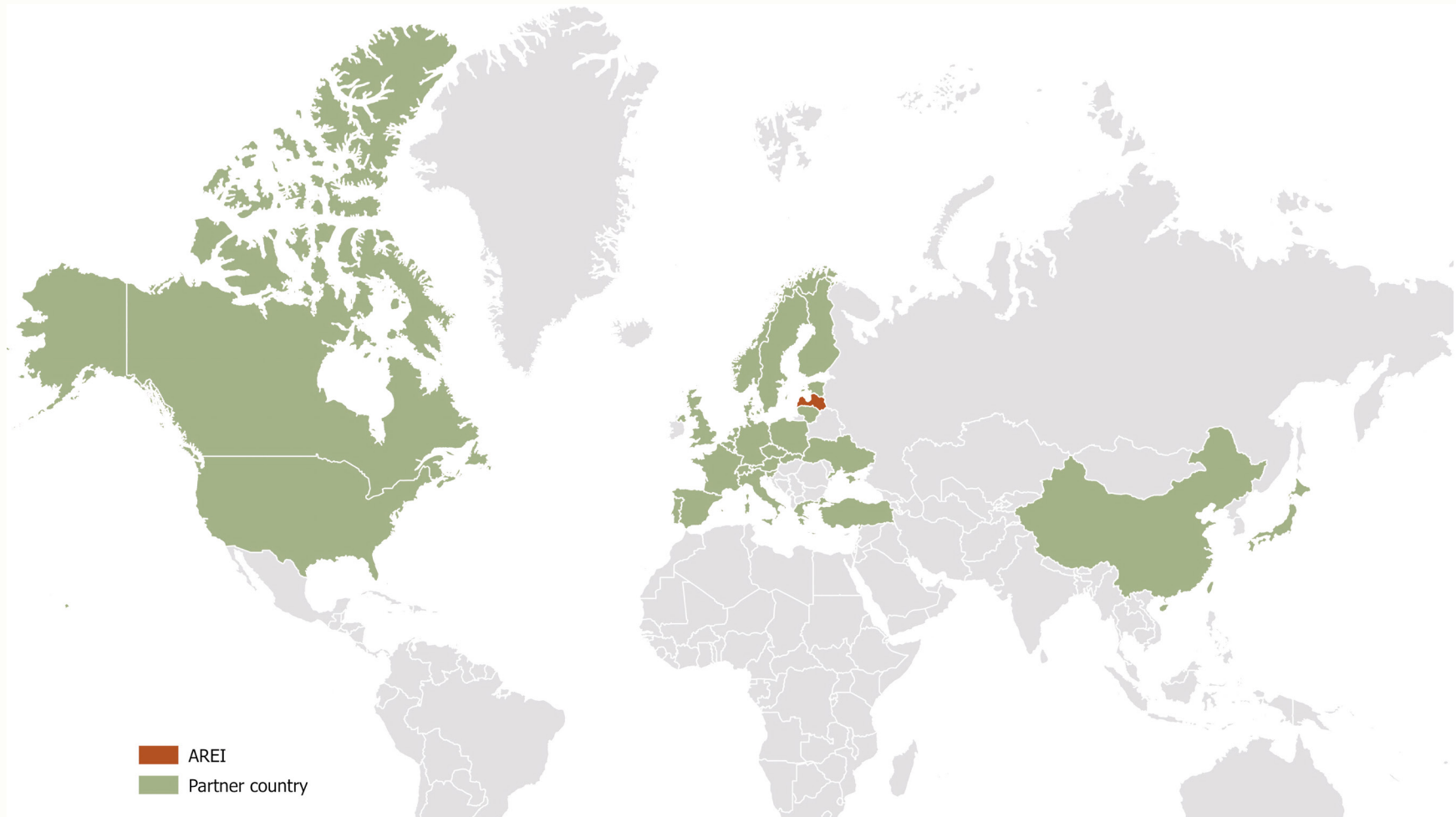
The institute has a laboratory accredited to the LV EN ISO/IEC 17025 standard, which can perform testing for grains, their processing products, plant biomass, and soil. The laboratory regularly participates in ring tests.





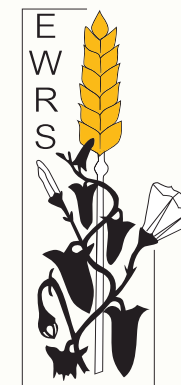
# Partners

AREI collaborates with more than 40 scientific institutions from 21 countries.



Lithuania, Estonia, Sweden, Germany, France, United Kingdom, Denmark, Finland, Poland, Czech Republic, Netherlands, Italy, Spain, Norway, USA, Canada, China, Japan, Switzerland, Belgium, Austria, Ukraine, Turkey

# The institute and its researchers are involved in international scientific organizations, consortia, and networks:



*World's Poultry Science Association*



## AREI also participates in working groups established by EU institutions:



EU Committee for the Farm Accountancy Data Network  
Eurostat work group "Agricultural Accounts and Prices"

## Maintains active EU databases:

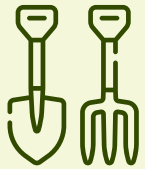


Aggregate agricultural accounts  
Common Monitoring and Evaluation Framework  
Common Monitoring and Evaluation System for Rural Development



# AREI Strategic Priorities:

## Priority 1 - Productive and Diverse Crops



This involves research on crop genetic resources, breeding for biological and integrated farming systems, and aligns with the EU's "Farm to Fork" strategy priorities: Seed security and diversity, agricultural ecosystem resilience to future diseases and pandemics.

# AREI Strategic Priorities:

## Priority 2 - Sustainable Agro-technologies and Raw Material Production



Includes agro-technologies, their efficiency, solutions for the effective interaction between agro-technologies and the environment, the sustainability of environmental resources (agroecology), and research on organic farming. It aligns with the EU's "Farm to Fork" strategy priorities: Sustainable food production; Sustainable agricultural food systems; Plant health and protection; Agricultural ecosystem resilience to future diseases and pandemics.

# AREI Strategic Priorities:

## Priority 3 – Rural Sustainability and Bioeconomy Development



Involves socio-economic modeling of rural areas, analysis of the Common Agricultural Policy (CAP), evaluation of public benefits, development of bioeconomy sectors, and solutions to increase competitiveness. This also includes research on the development of bio-regions and urban agriculture. It aligns with the EU's 'Farm to Fork' strategy priority: A bioresource-based circular economy.



# From 2020 to 2023

**AREI organized three internationally significant scientific events in Latvia:**

**1.**

In collaboration with the European Association for Research on Plant Breeding (EUCARPIA), an international online conference titled **“Innovations in Breeding and Seed Production for Organic Food Systems”**  
- 175 participants from 30 countries worldwide



**2.**

The 13th International **Barley Genetics Symposium**  
-182 participants from 30 countries

**3.**

The annual conference of the **International Farm Comparison Network (IFCN) Dairy Research Network** - 90 participants in person, 150 remotely from 35 countries across all continents

# AREI Achievements

- Awards from the Latvian Academy of Sciences for the most significant achievements in agricultural science (2021, 2022, 2023).
- Registration of 58 AREI-bred varieties across 17 crop species.
- Organization of international conferences:
  - 2021: EUCARPIA Low-Input and Organic Section Conference.
  - 2022: World Barley Symposium (27 countries).
  - 2023: IFCN Annual Conference on Dairy Research, themed “Energy Crisis in the Dairy Sector: Challenge or Opportunity?” (35 countries).





# Contacts:

Information for further communication

e-mail: [arei@arei.lv](mailto:arei@arei.lv)

phone: +371 67552909

Address: Struktoru iela 14, Riga, LV-1039

[www.arei.lv/en](http://www.arei.lv/en)

