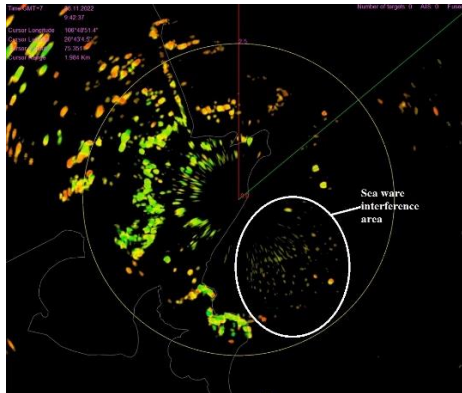
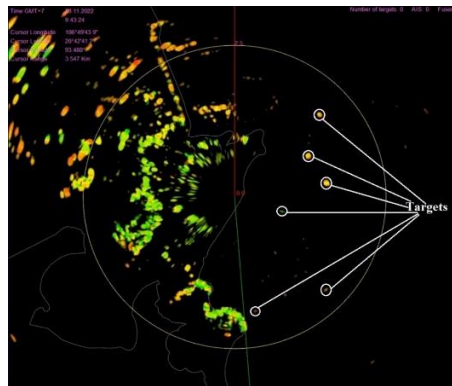


## ELIMINATE INTERFERENCE OF SEA WAVES

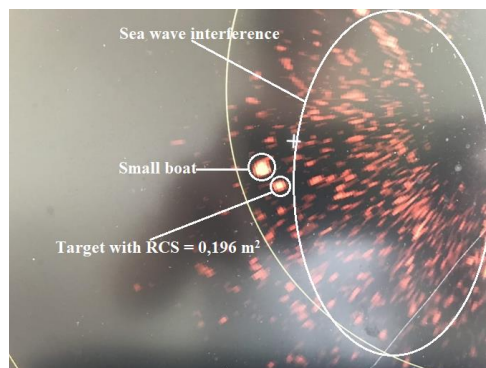
Eliminate sea wave interference by controlling  $\sigma_{\alpha\beta}$



Sea wave interference



Sea wave interference eliminated



Target + Sea wave

The sea wave high 1.8 m - 2.2 m, that is strong interference. However, because  $J_{\alpha\beta}$  of the target and waves are different, then the color of the target marker and the waves marker will have to be different, so it is easy to detect the target on the background interference (In the picture the detected small target with  $RCS=0.196 \text{ m}^2$ ). That's the excellence advantage.