

This document has been prepared by ML System S.A. ("ML SYSTEM") with its registered office in Zaczernie No. 190G (36-062), entered into the Register of Entrepreneurs of the National Court Register by the District Court in Rzeszów, 12th Commercial Division of the National Court Register, under the number 0000565236, NIP 5170204997, REGON 180206288, capital share capital PLN 6,484,243, paid in full.

ML SYSTEM does not expect this document to be changed, updated or modified in order to present changes that occurred after the date of its publication, unless it is required by applicable law. Forward-looking statements contained in this document, in particular, such as forecasts as to revenues or development of the ML SYSTEM capital group ("ML SYSTEM Group"), have been determined on the basis of a number of assumptions, expectations and projections, and therefore are subject to uncertainty and risk. They may change under the influence of external and internal factors and should not be treated as binding forecasts. Neither ML SYSTEM nor persons acting on its behalf, in particular members of the Management Board of ML SYSTEM, advisors of ML SYSTEM, nor any other persons, provide any assurance that any predictions regarding the future will be fulfilled, in particular, they do not guarantee compliance of future results or events with these statements as also that the future results of ML SYSTEM will not differ materially from the projected ones.

The information and data contained in this document do not constitute, in particular, a promise by ML SYSTEM regarding the achievement of specific financial results by the ML SYSTEM Group or a specific level of valuation of the ML SYSTEM Group in the future. The information contained in this document may be subject to significant changes. ML SYSTEM does not expect this document to be changed, updated or modified in order to present changes that occurred after the date of its publication, unless it is required by applicable law.

This document is for information purposes only, it does not constitute an offer or an invitation to submit offers within the meaning of Art. 66 and Art. 71 of the Act of April 23, 1964, the Civil Code (Journal of Laws of 1964, No. 16, item 93, as amended), in particular an offer or invitation to purchase any ML SYSTEM securities or an invitation to submit offers purchase or subscription for ML SYSTEM securities, or a public offering of ML SYSTEM securities within the meaning of Art. 2 lit. d of Regulation (EU) 2017/1129 of the European Parliament and of the Council of 14 June 2017 on the prospectus to be published when securities are offered to the public or admitted to trading on a regulated market and repealing Directive 2003/71/EC (Official Journal of the EU.L.2017.168.12).

This document does not constitute information about the securities of ML SYSTEM and the conditions of their purchase or subscription constituting a sufficient basis for making a decision on the purchase or subscription of these securities. This document is not for distribution in the United States of America, Australia, Canada, South Africa or Japan. The information and data contained in this document are provided for information purposes only and should not be used as a basis for making an investment decision. The content of this document does not constitute a recommendation, opinion or investment, legal, accounting or tax analysis. Each person in possession of this document is responsible for conducting their own analysis of the information contained or mentioned in this document and for making a substantive assessment and risks related to the information described in this document.

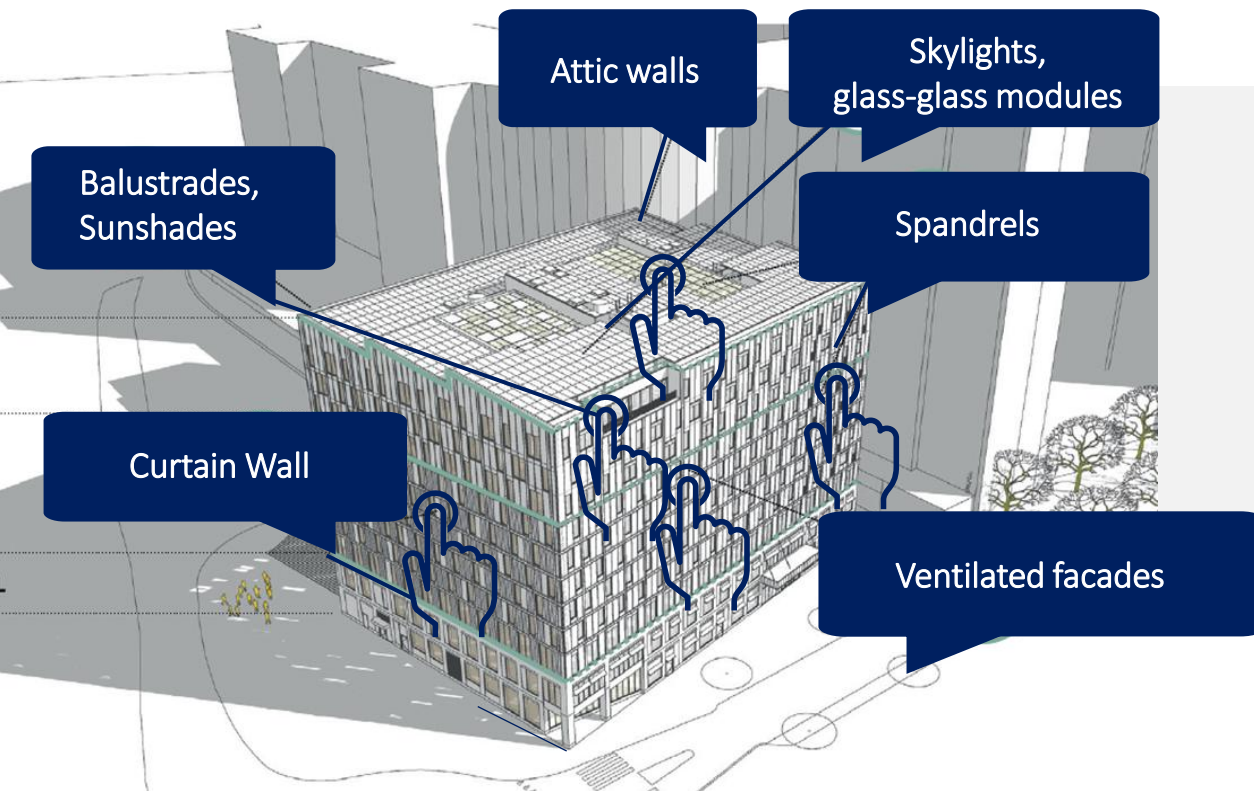
Any liability of ML SYSTEM, persons acting on its behalf, in particular members of the Management Board of ML SYSTEM, advisors of ML SYSTEM, employees and associates of the above-mentioned persons and any other persons in connection with this document and the information contained therein is excluded. The above-mentioned persons shall not be liable for the investment decisions of the person in possession of this document or who had, even indirectly, access to its content, and their consequences, in particular for damages incurred by such a person (both for actual loss and lost profits).

1. BIPV Product description
 - a) Laminated BIPV Glass
 - b) PhotonWall
 - c) Insulated Glass Units – BIPV IGU
 - d) Insulated Glass Units with Quantum Dots
 - e) PhotonRoof
 - f) Energy Management System SCADA ML
2. Power Estimations
 - a) Variables
 - b) Energy Yield Calculations
 - c) ROI calculations - example
 - d) Carbon footprint savings
3. Feasibility study
4. References



Project Elithis Tower in Mulhouse, France. Awarded in 2025, delivery in 2026

ML System is producing BIPV materials for all building applications.



Still innovation, but developed since 2007 and hence matured.

Specialized brands for various applications



ML SYSTEM S.A. – production plant approx. 40,000 m²



www.photonroof.eu

PHOTOVOLTAIC CERAMIC
ROOF TILES



www.photowall.eu

PHOTOVOLTAIC FACADE PANELS



www.ml-bipv.eu

PHOTOVOLTAICS INTEGRATED WITH
CONSTRUCTION



www.ml-systemplus.pl

PROFESSIONAL INSTALLATION OF PV
AND BIPV SYSTEMS



REVOLUTION IN ARCHITECTURE

1 PRODUCT 1 ASSEMBLY 2 FUNCTIONS



BIPV ML System:

Manufacture of façade panels, architectural glazing and photovoltaic roof tiles, together with a complete, certified mounting system and renewable-energy installation components. ML System products are compatible with the majority of mounting systems available on the European market.



BIPV ML System:

BIPV is a renewable-energy technology that guarantees the fastest return on investment—up to one year—without any additional support schemes*.

*Cost calculated as the difference versus using conventional building materials, while simultaneously generating free energy.

BIPV (Building-Integrated Photovoltaics) involves replacing conventional construction materials used in façades and roofing (ceramics, composite panels) with materials that generate solar energy.

Laminated BIPV Glass with or without color

BIPV louvres
Laminated glass with digital ceramic print technology



Building Integrated Photovoltaics – BIPV laminated glass combines the functions of traditional construction materials with the ability to generate renewable electricity from the sun. It can be used as part of the building structure, such as **façades**, **balustrades**, **skylights** or **sunshades**, while maintaining high aesthetic and functional standards. This eco-friendly and modern solution is ideal for both new buildings and the modernization of existing, energy-inefficient structures.

Project for company Endigo in Fiesch, Switzerland. Completed in 2025, 180 m² of BIPV louvres.

up to 200
Wp/sqm

any color in
RAL palette

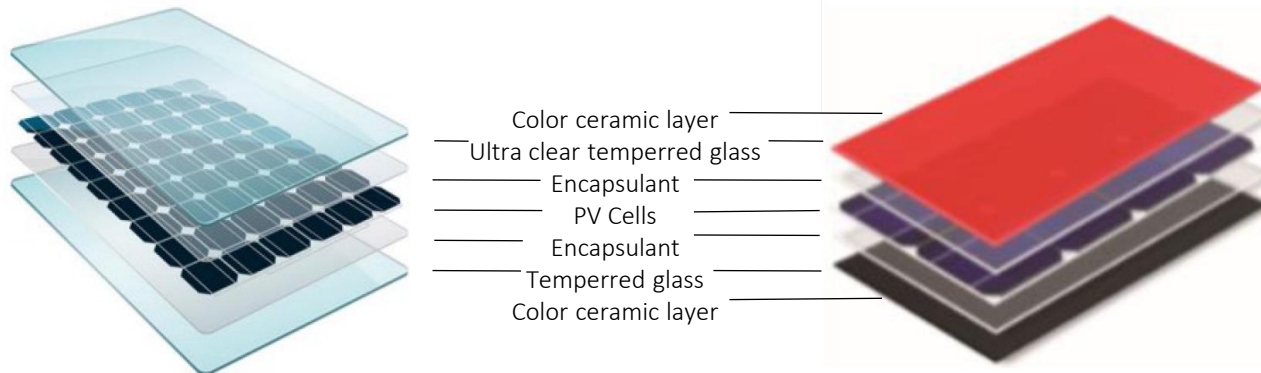
any shape or
dimension

Excellent
durability

Advantages of ceramic digital print technology

Ceramic digital printing technology involves melting a color ceramic layer during the glass tempering process. Thanks to this technology ML System:

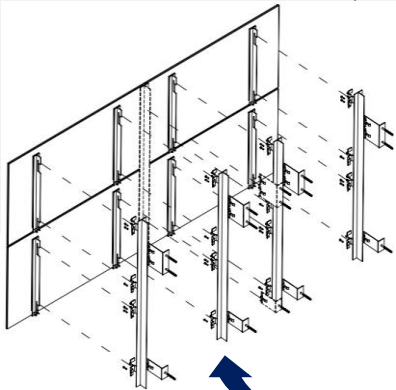
- has **no limitations** when it comes to colors, multicolor designs, or printing various patterns,
- achieves the **highest parameters** in terms of mechanical strength, scratch resistance or color fading,
- is **stable partner** by doing all processes in house and sourcing materials from long-term partners from Europe.



PhotonWall – Inspired by Nature, powered by Future



PhotonWall photovoltaic façade panels enable every designer and contractor—whether delivering a **new build or a renovation** — to create aesthetic, practical, and distinctive projects while meeting the requirements of solar-energy technology. Solar architecture — the use of materials that generate **renewable, zero-emission energy** — is a new reality that combines functional value and business efficiency with environmental stewardship.



Project for Norwegian Petroleum Directorate Office Building in Stavanger, Norway. Completed in 2019/2020, 1000m² ventilated façade PhotonWall. After few years of service it is producing **28% more energy** than expected.

Easy assembly,
complete system

any shape,
color, dimension

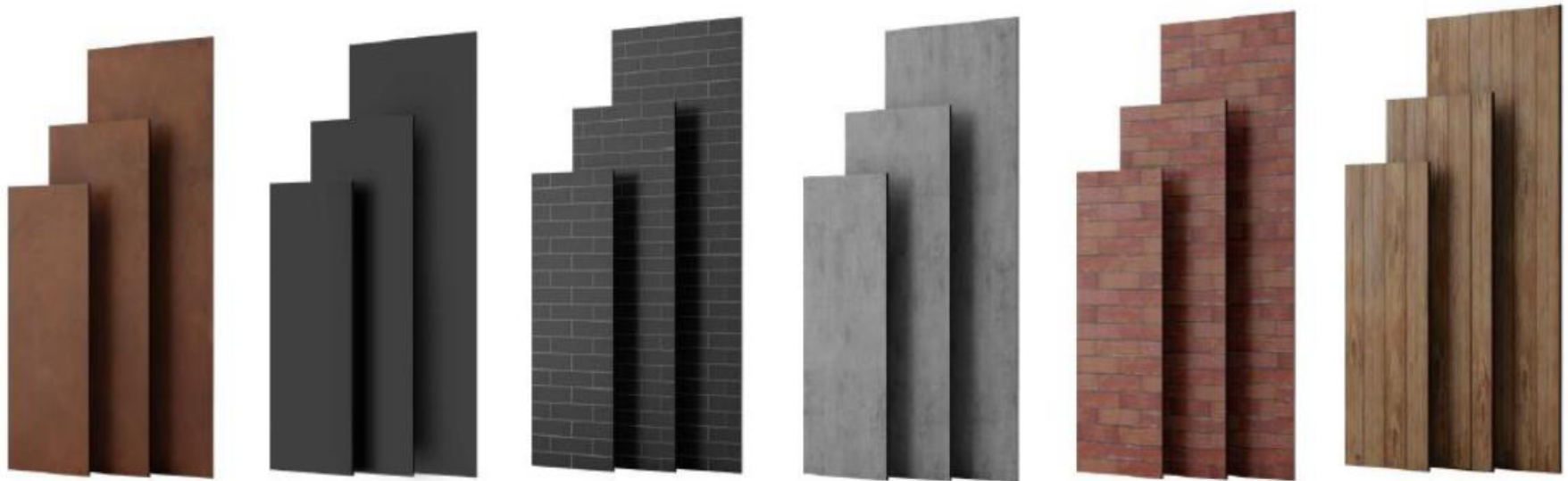
excellent
durability

up to 160
Wp/sqm

PhotonWall - *Inspired by Nature, powered by Future*



The special surface structure of photovoltaic façade panels retains the natural appearance, structure, color, porosity of traditional building materials such as wood, brick, stone, granite or concrete.



SCRATCH
RESISTANCE



NO BURNING
DROPLETS



TEMPERATURE
RESISTANCE



DOES NOT
SPREAD FIRE



RESISTANCE
TO GUSTS
OF WIND



NO SMOKE



NO FALLING
OFF DURING
FIRE



HAIL
RESISTANCE

Building Integrated Photovoltaics Insulated Glass Units -

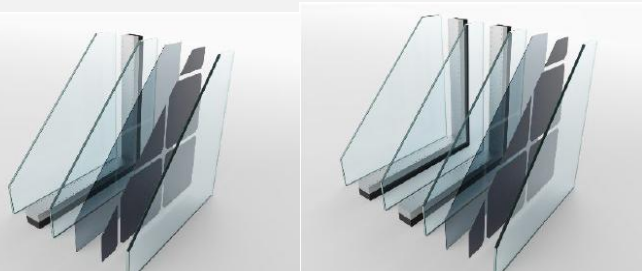
Product intended for applications such as **curtain walls** or **skylights** with the ability to generate electricity from the sun. A wide range of possibilities allows us to manufacture the most demanding IGUs in terms of size, shape, and performance parameters such as energy transfer coefficient, thermal insulation properties, or light transmission.

It is also possible to use **No Frost** technology, which is particularly useful in skylights applications.

BIPV Insulated Glass Units



Project completed in 2021 for Medical University in Warsaw, Poland, 720m² BIPV Insulated Glass Units (IGU) in Curtain Wall



variable
transparency

great U_g and LT
parameters

wide range of
possibilities

Up to 160
Wp/sqm

Insulated Glass Units With Quantum Dots

Glass with an active quantum coating is the first and only solution on a global scale which, thanks to the use of a coating of quantum dots on the glass, allows you to generate green electricity from the sun, while reducing harmful UV and IR radiation. Glass with an active quantum coating has very good **light transmission parameters**, while maintaining a high coefficient of thermal insulation. Glass with an active quantum coating **reduces overheating** of rooms, as well as the effect of the so-called urban heat island (UHI). Glass with an active quantum coating is a **breakthrough in the energy balance** of the urban area.



BAU Munich
Innovation Award
in 2023

g parameters
from 0,22

LT up to 85%

Patented
technology

Developed by
ML since 2013

PhotonRoof are innovative photovoltaic roof tiles that combine the function of a traditional roof covering with the ability to generate electricity. **One product, one installation, double benefit** — a roof that not only protects but also powers the home with renewable energy. By combining the role of a conventional covering with a high-efficiency photovoltaic module, PhotonRoof offers an elegant alternative to standard PV panels, delivering aesthetics, durability, and energy independence.



Ongoing project for renovation of XVI century historical building in Munich, Germany. 400 sqm PhotonRoof, Carptiles Red. Headquarters of the Bavarian State Office for the Preservation of Historical Monuments.

easy
assembly

highest safety
standards

for modern &
historical projects

up to 160
Wp/sqm

Innovative EMS system

ML System created its own, **SCADA ML** software for **smart management** PV & BIPV installations, visualizing the energy yield from renewable sources in real time, energy trading, CO2 savings reporting and many others.

A significant aspect of the SCADA ML is, that the **Investor is the owner of the Data** (no cloud services), which secures highest **cyber security** level (i.e. NIS2, CAR directives), and allows the owner many additional functions, like connecting several installations in one Smart System.



over 1400
working installations

easy maintenance
& remote diagnostic

SLAVE function to
existing BMS

Smart BIPV,
Energy trader

safe DATA,
no CLOUD service

Power Output,
CO2 reporting

Why to choose ML SYSTEM ?



- **Deep production:** In house from jumbo glass to final product
 - *safe and reliable supply chain*
 - *Simplified communication*
- **Know-How:** Experienced Partner with experts from many industries
 - *Technical support from Idea to delivery*
- **Flexibility:** Able to produce of any shape and color
 - *Keeping Look & Feel*
- **Complexity:** We produce BIPV in every field – facades, roofs, IGU
 - *One investment, One partner for BIPV*
- **Capacity:** 40.000 sqm production facility in Europe
 - *safe processing of the most demanding projects*

Basic factors that influent Power Capacity are:
Color and Light Transparency level

Product	Power per sqm	Dependency
Standard Photovoltaic	230 Wp / sqm	negligible
Laminated BIPV Glass (transparent)	Up to 200 Wp / sqm	Light transparency
Laminated BIPV Glass (with color)	Up to 200 Wp/sqm	Color
PhotonWall	Up to 160 Wp/sqm	Color
IGU BIPV	Up to 160 Wp/sqm	Light transparency
IGU with Quantum Dots	Up to 30 Wp/sqm	
PhotonRoof	Up to 160 Wp/sqm	Color

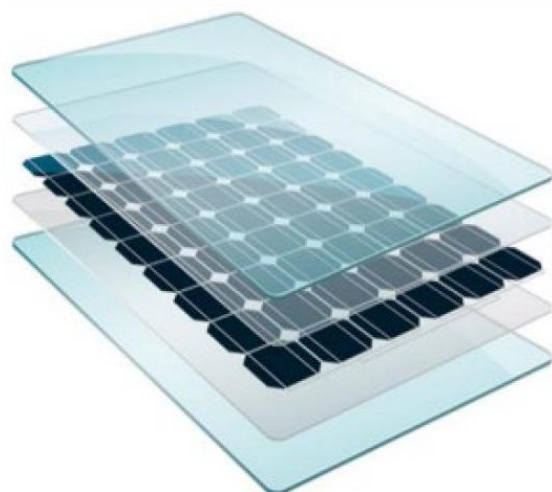
Power Capacity – color impact

Power Capacity in compare to standard power 200 Wp/sqm in regards to **color***
***COLOR** palette for reference only.

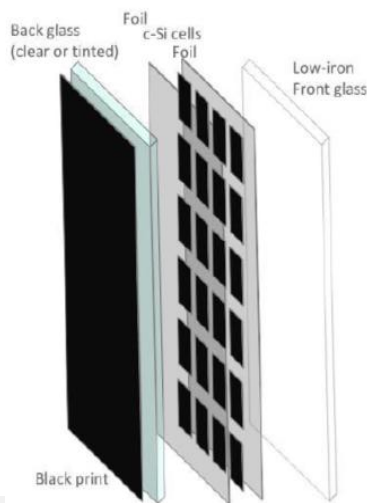
ML System produce color modules in RAL palette or multicolor.

Black*	Green*	Anthracite*	Blue*	Grey*	White*	Wood*	Red*
200 Wp	150 Wp	150 Wp	130 Wp	150 Wp	100 Wp	130 Wp	110 Wp

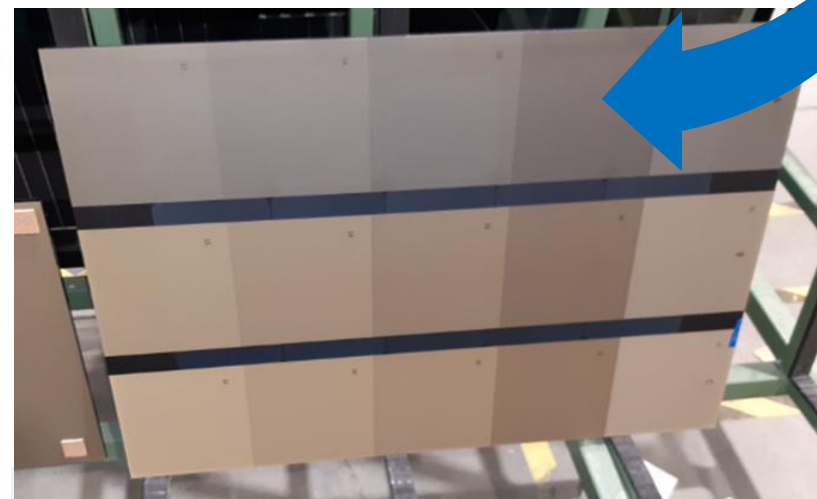
Transparent Laminated BIPV Glass that reaches 200 Wp/sqm once printed gains efficiency limited by color.



Transparent BIPV Laminates without colour



*BIPV Laminates with **Black** backsheet*



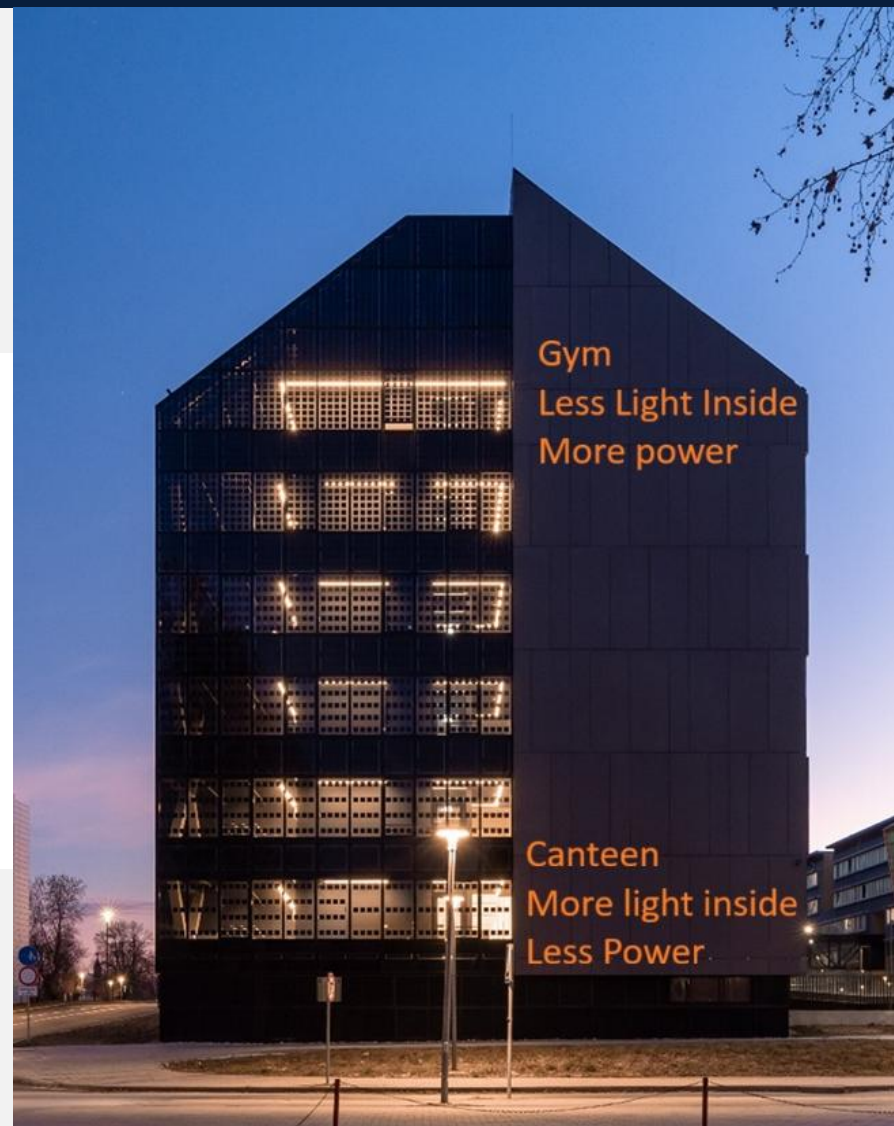
Full Color BIPV Laminates

Power Capacity – Light transparency impact

Power capacity depends on how many PV cells are used. Number of cells limits **Light Transparency**. Common transparency level for BIPV IGUs, Skylights or BIPV laminates is 20%.

Transparency	Power per sqm
20%	160 Wp
30%	145 Wp
40%	130 Wp
50%	115 Wp
60%	100 Wp

Laminates or IGUs with higher light transparency has lower energy efficiency.



Power Capacity – Light transparency impact

In project for student campus – J.J. Strossmayer University in Osijek, Croatia – architects wanted to play with Light transparency level in order to find the balance between power efficiency and comfort for students.



On the lower floors there are canteens where access to natural light is desired.

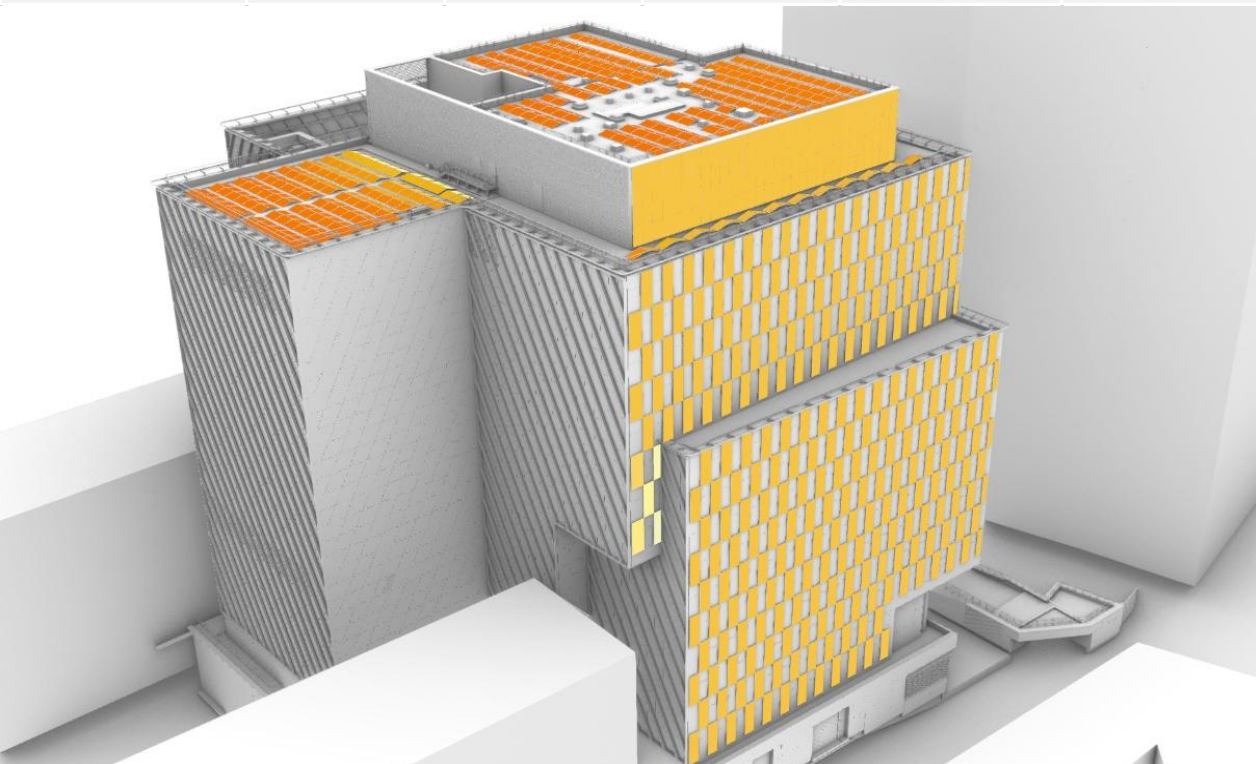


The upper floors held exercise rooms and libraries, and there we could maximize power efficiency.

Several ways to estimate Energy output:

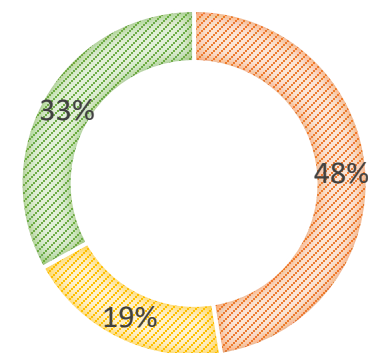
1. **Basic tool** prepared by European Commission – PHOTOVOLTAIC GEOGRAPHICAL INFORMATION SYSTEM. Great for analyzes on early stage.
2. **Common** design and simulation software for PV systems – User friendly easy tools, ML System may support.
3. **Advanced tool created by ML System** to estimate power efficiency on the building layer. Common tools are dedicated for standard PV, while ML System tool is dedicated to BIPV – considering light reflection or shadowing from neighborhood. To make calculations ML System requires:
 - a) 3D model of the envelope of the building, i.e. in Revit.
 - b) Exact location of the building

Façade	Total Area	Radiation	Inst. power	AC Energy	Spec. yield
	m2	kWh/m2	kWp	kWh	kWh/kWp
South Facade	1 408,5	626	239,4	127 335	532
Roof Lower	394,8	775	79,0	52 020	659
Roof Higher	587,6	887	117,5	88 653	754
TOTAL	2 390,9		435,9	268 008	



ENERGY YIELD

■ South Facade
 ■ Roof Lower
 ■ Roof Higher



In urban area exists much **more space for BIPV** than for classic PV installations on a roof.

BIPV plays a key role in energy transition, supports **energy independence** in a rapidly electrifying world.

BIPV advantages against classic PV - Stockholm

Monthly Energy Output Installation 100 kWp in Stockholm



Source:
Power Output: PHOTOVOLTAIC GEOGRAPHICAL INFORMATION SYSTEM
Energy prices: EMBER Energy (Energy prices 2024)

Conclusions:

- **BIPV** produces **2% more** energy (81,4 MWh) than **PV** on the roof (78,9 MWh)
- **BIPV** in cold months (October-March) produces **53% more** energy than **PV** on the roof.
- **BIPV** produces much more energy when the **costs of energy** are higher.

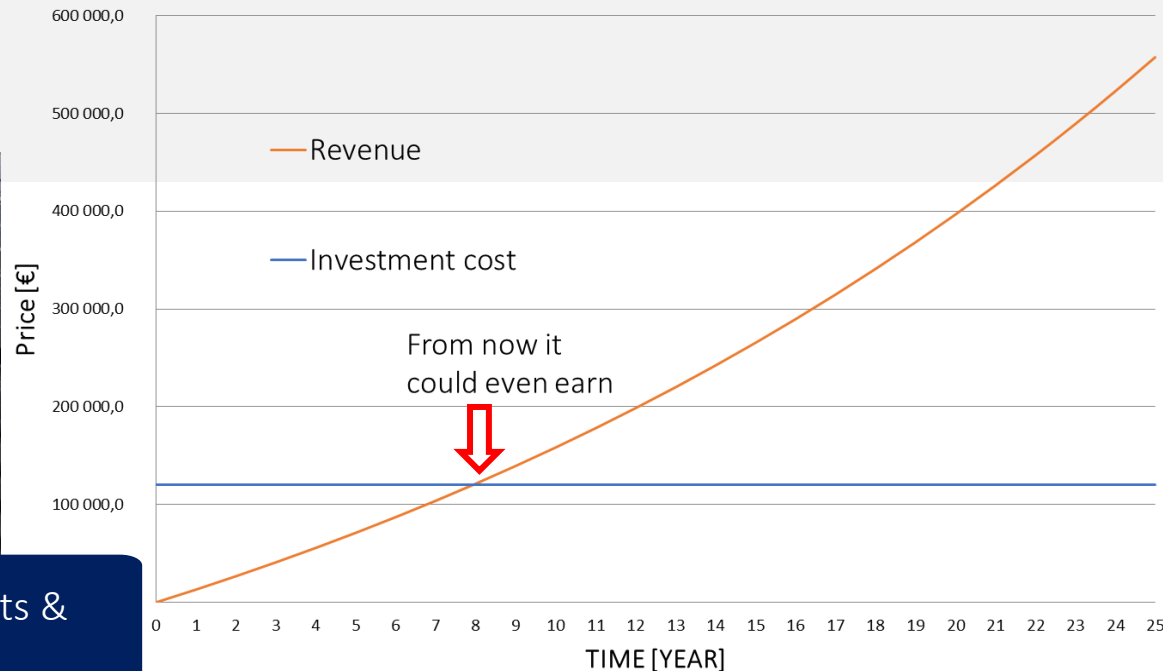
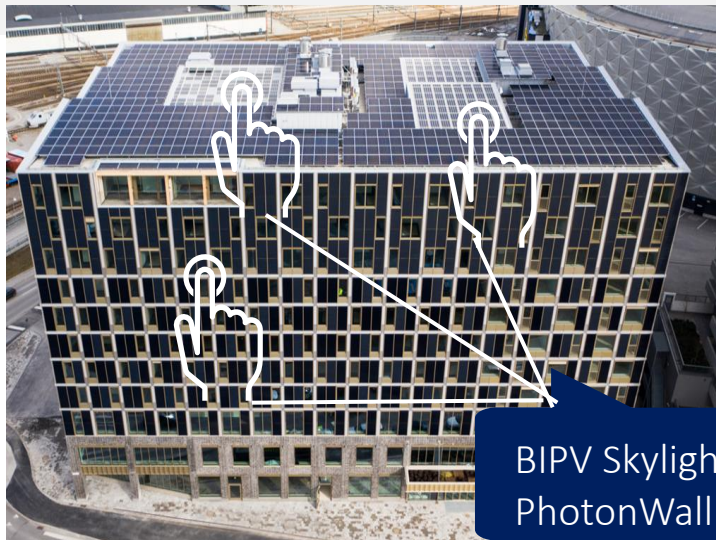
BIPV harmonically generates energy and avoids power peaks on a monthly and an hourly basis. Higher energy production in mornings and evenings **avoids midday peaks** when energy prices are low or even negative.

Estimated Payback time – Example Hotel Solna

Payback time of the BIPV Project HOTEL N3 SOLNA in Stockholm is **about 8 years**. BIPV is the only building material with countable ROI factor.

In this project, from 2020, was installed 1150 m² of BIPV – Skylights and ventilated facade PhotonWall. Estimated annual energy production from facade was warranted (KPI) for **72 500 kWh**, while after few years of functioning the facade is **producing even 93 500 kWh**, 29% above expectations.

Energy independence is priceless.



Using BIPV allows to calculate Carbon footprint **savings for tens of years** permanently.

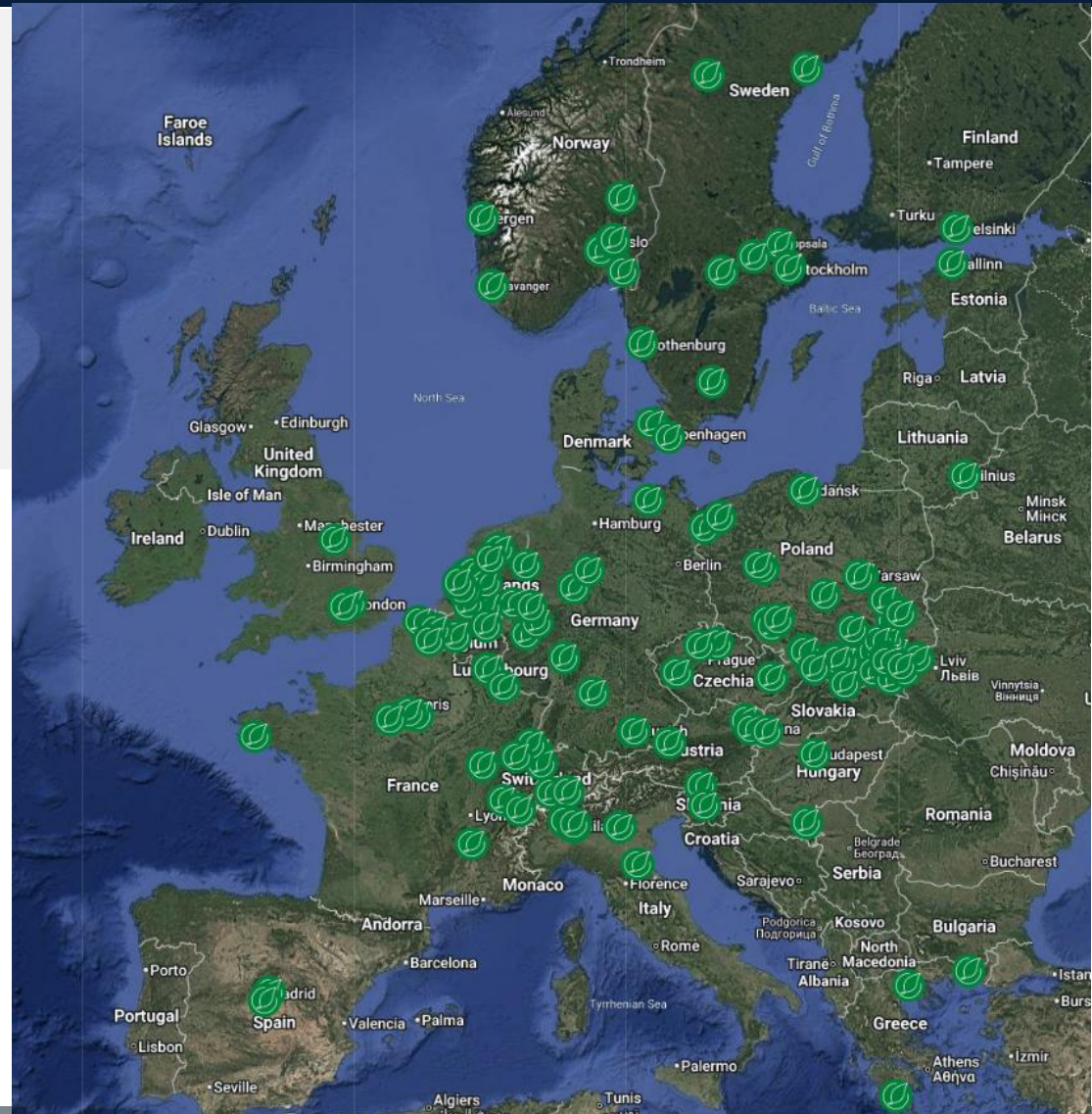
1. Embodied Carbon Footprint (ECF) can be calculated with our **EPD Type III certificates**.
2. Carbon Footprint savings **during building's operation** can be calculated on the basis:
 1. how many energy was produced in particular year by the building
 2. what Energy Emission Index has the country where the building is located

Example – Building located in Poland with installed Power Capacity of 200 kWp has in a year 2024 produced 150 mWh. Poland Emission Index for 2024 was 733 kg/kWh. It means that this building in 2024 has saved cca 110 thousands of tones of CO₂

ML System BIPV Products

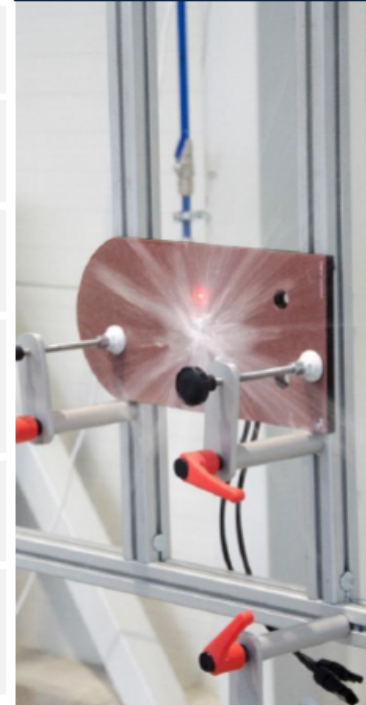
Over 15 years of Experience

Focus on European market with sales record in North America and APAC



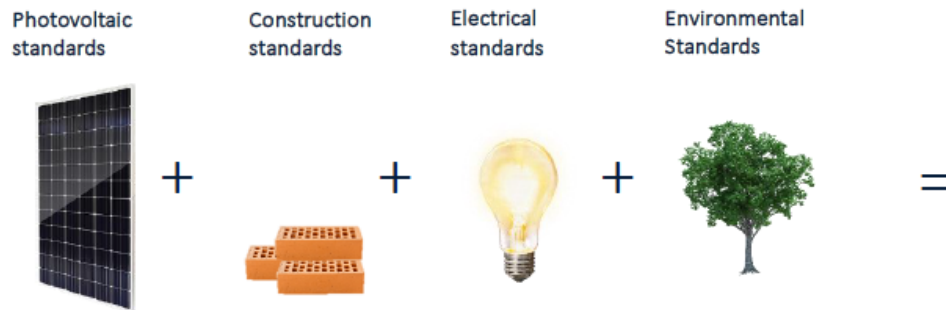
Preparation of ML SYSTEM for the "New Building Directive"

	CLASSIC PHOTOVOLTAICS	PHOTOVOLTAIC ROOFING SYSTEMS	ML SYSTEM PRODUCTS
PHOTOVOLTAIC STANDARDS	✓	✓	✓
CONSTRUCTION STANDARDS	✗	✓	✓
BUILDING STANDARDS IN THE FIELD OF FIRE FOR AREA ABOVE 1000 M2*	✗	✗	✓
ELECTRICAL STANDARDS	✗	✗	✓
ENVIRONMENTAL STANDARDS	✗	✗	✓



* Classification as fire retardant material

Security parameters met by ML System



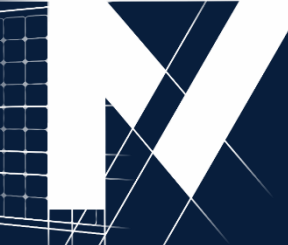
POSITIVE FIRE TEST RESULTS

a study conducted for ML System S.A. by the **Fire Testing
Department of the Building Research Institute**

Our photovoltaic facade panels can be used on aluminum-glass facades of all buildings, including high-rise buildings (over 25 m) and skyscrapers (over 55 m).

- Ready for EPBD IV and Construction Products Regulation (CPR)
- Contributes to LEED, BREAM
- Our EPD available on Eco Platform





BIM Library

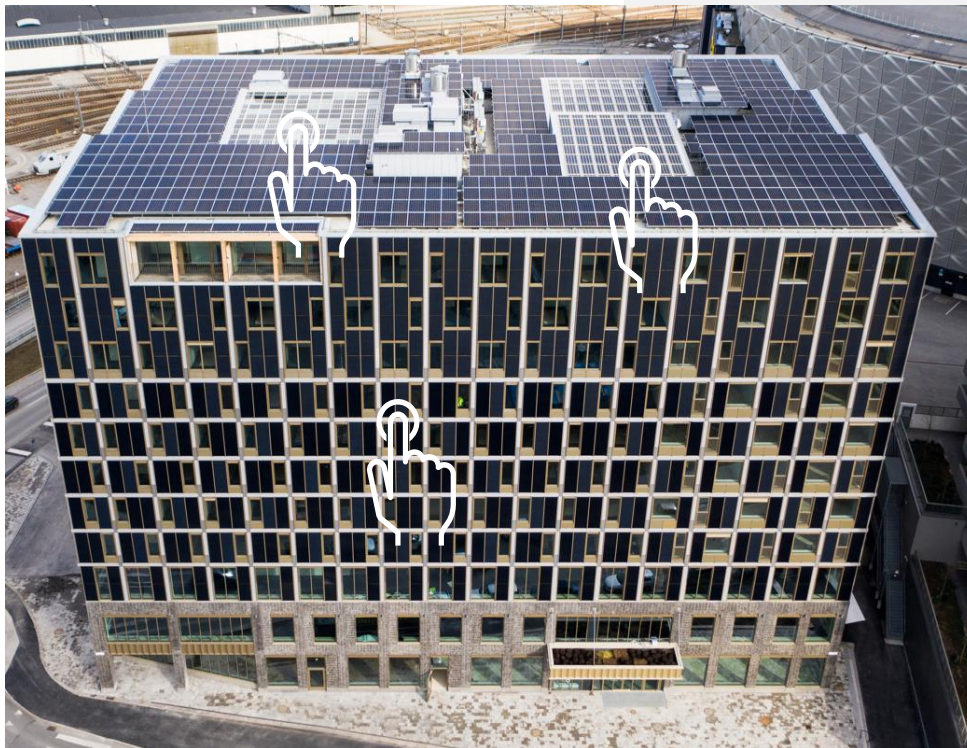
We work with BIM Libraries and are able to provide new objects of tailor made products

[Click to check available objects](#)



Selected Projects



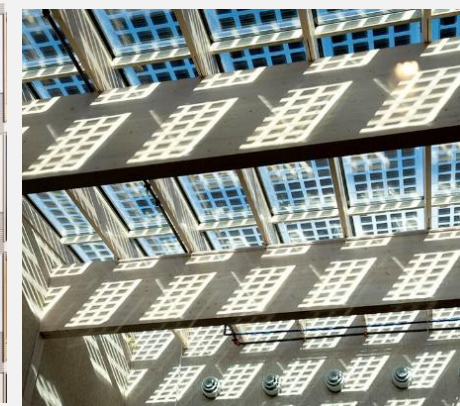


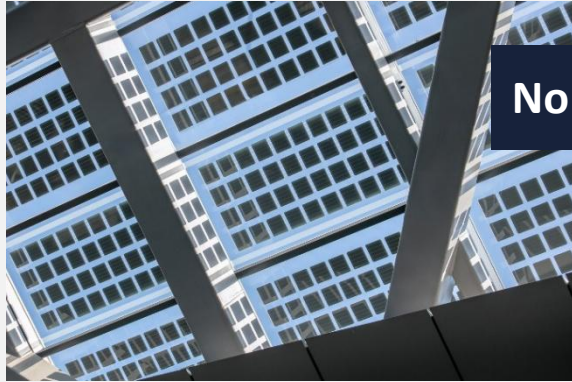
Project: Nordic Choice Hotels, Solna, Sweden **Investor:** Fabege

Architects: White Arkitekter **Contractor:** Skanska, Solkompaniet, A-Lab, GlasLindberg

3 Types PV Laminates on the facade

Insulated PV glass – triple glazing – skylight area ventilated
"cold" facade on SAPA system, BIPV skylight on SAPA 4150 system





No Frost

The installation covers around **30%** of the station's annual energy demand and helps reduce operational risk from rising electricity prices.

Additional special features:

No Frost – skylights equipped with integrated snow melting function

Architectural lighting – a key element in modern construction

Safety is a key principle behind ML System products.

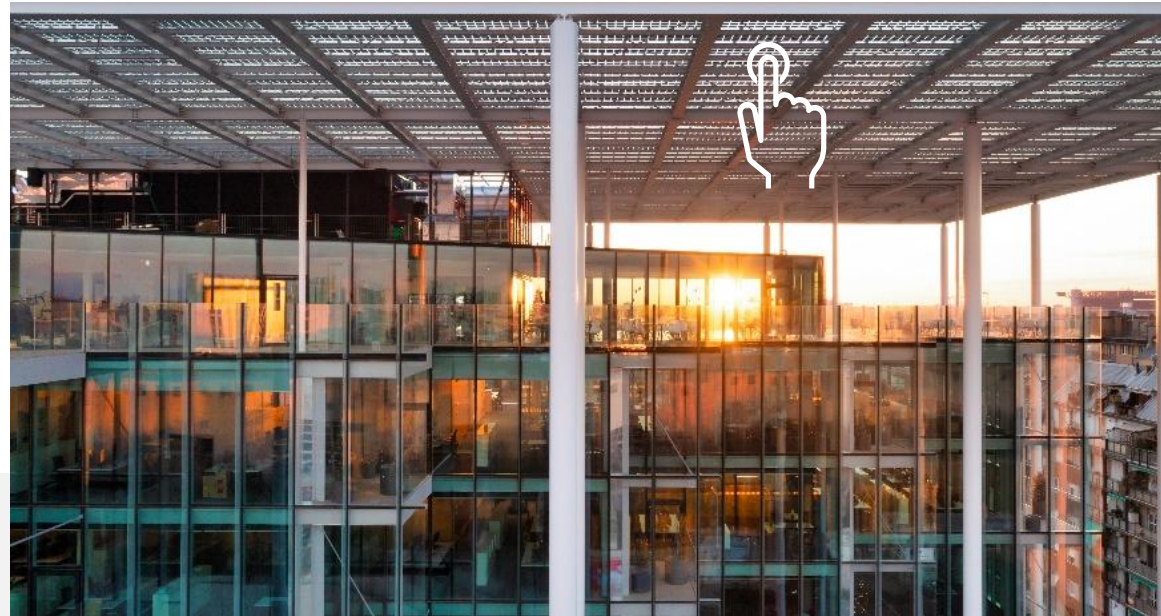
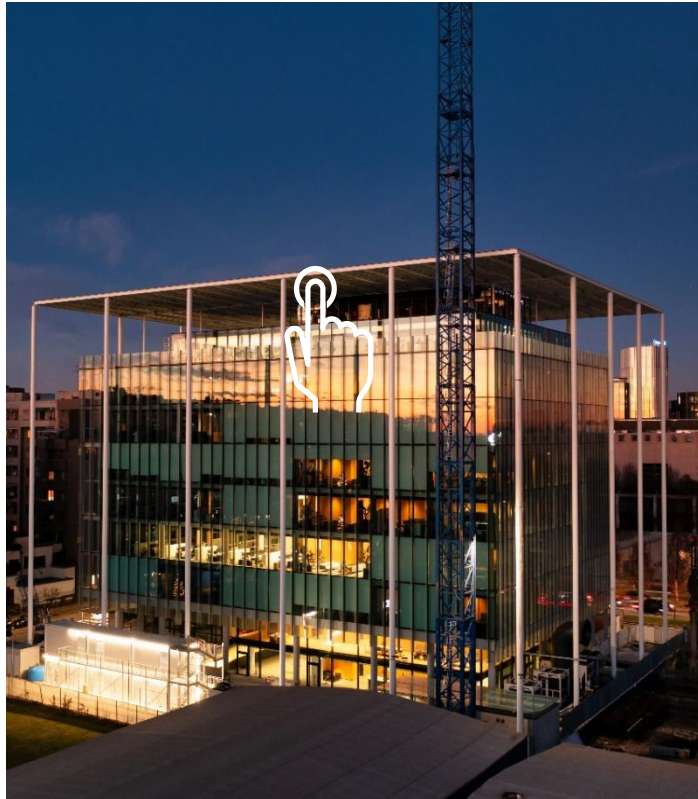
The BIPV installation at Warsaw West Station functions as a weather safe roof skylight that also generates electricity.

**1 mln kWh
annually**

**30% energy
demand**

**No Frost
Light**





BFF Banking Group is the largest independent specialist financial institution in Italy and a leading player in Europe. ML System supplied 796 units of BIPV product for the Milan headquarters project, covering a total area of 2,197 m². Project was completed in 2024.

The building was awarded **Best New Development** at the **MIPIM Awards** during the **Cannes property exhibition**.



ML System supplied transparent glass-glass modules for a project in Osijek, Croatia. The total installed capacity was 42 kWp.



ARTERY Business Centre, Vilnius, Lithuania Designed by Daniel Libeskind The tallest building in Lithuania



ML System supplied glass modules with **ceramic print** for the Artery project in Vilnius, providing an aesthetic roof finish.

PROJECT: Studio Libeskind



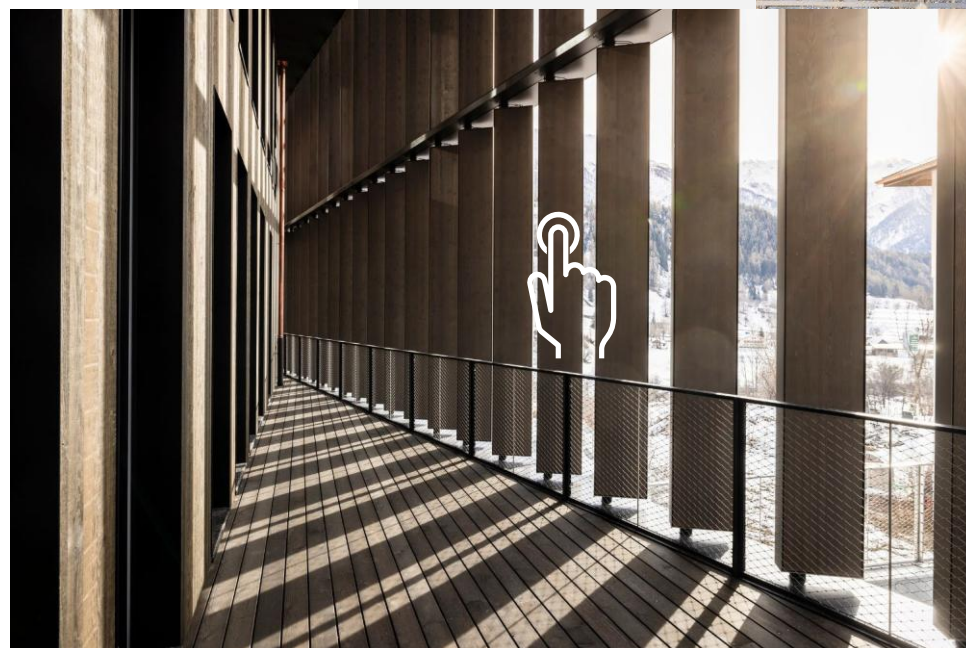
Project: Aeres Hogeschool Almere

BIPV Installation: photovoltaics lamellas on the facade and BIPV laminates on the roof

Won the "2021 BIPV Award for best implementation of the year"

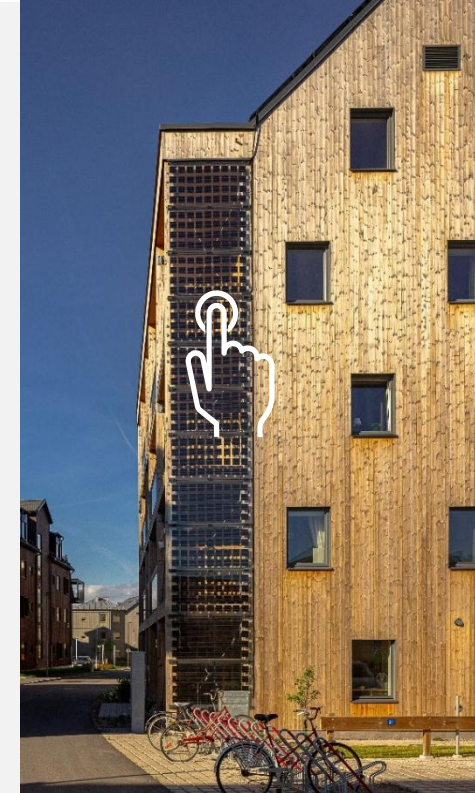
Great example that sustainable architecture can join Green & BIPV solutions.





ML System supplied 200 m² of **satin-finish** photovoltaic modules for a project in **Fiesch**.

In **Switzerland and Luxembourg**, workspace buildings must have sun shading. Project completed in 2025.



Active Balustrades in Växjö

In Växjö, Sweden, photovoltaic balustrades are integrated into wooden houses. These balustrades serve as safety railings while simultaneously generating solar energy.

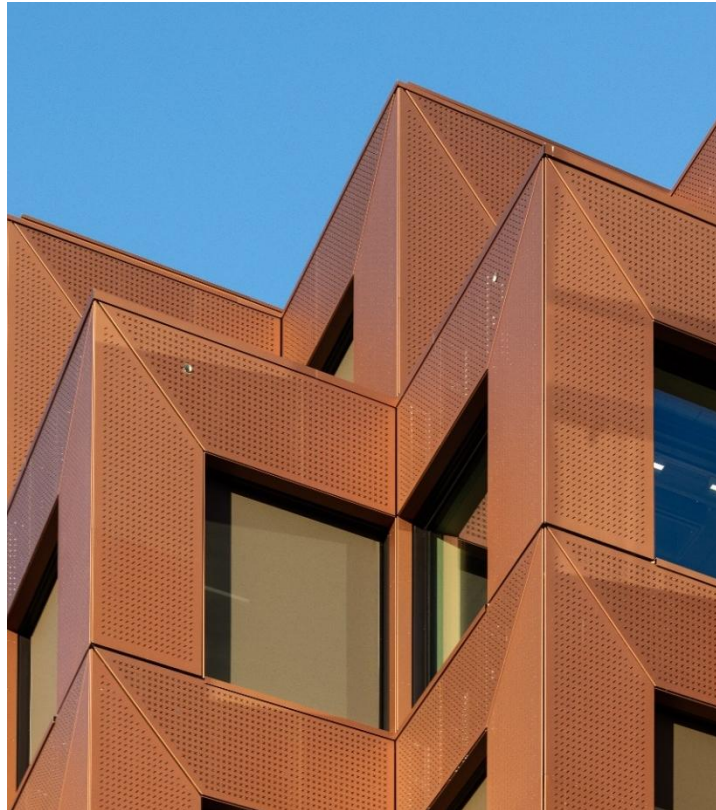
The design seamlessly combines modern solar panels with the natural aesthetics of wood, contributing to the building's energy efficiency **without compromising its visual appeal.**



Hague Tower

ML System provided BIPV skylights that deliver balanced natural lighting and generate electricity.





Urtekvartalet is one of the largest development investments in the center of Oslo.

ML System delivered 3,000 m² of insulated glass to the project and facade, which was implemented on the facade of the building



Wiśnicz, Castle

Glass units featuring active quantum coatings and an integrated heating function



ML System provided multifunctional glass units with a quantum coating BIPV awarded for innovation in the field of architecture and construction at the BAU Fair in Munich,

The glass units were additionally equipped with a heating function and offer excellent thermal and acoustic insulation.



HEATING



PHOTOVOLTAIC



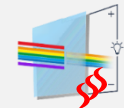
THERMAL INSULATION



INTEGRATION WITH BMS



SOUND INSULATION





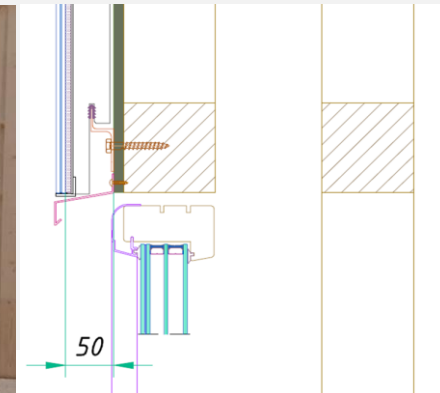
Selected ongoing & awarded projects





Project ETC HYLLIE in Malmo is ongoing project in 2025.

This investment is full off innovative solutions, like fully wooden construction, compacted straw as thermal insulation, and among them are ML System products – 500 m² **BIPV laminates for balustrades** and 600 m² **PhotonWall for south ventilated façade**.



Helsinki Apartment building



PHOTOVOLTAIC BALUSTRADES
BIPV AREA 520 m²

DC2 Tower Wien



The largest BIPV project in Europe, over 18.000 sqm of the BIPV façade on 175 meter high skyscraper will deliver annually approx 900 mWh green, renewable energy.
ML System starts deliveries in January 2026 and will continue until June 2026.





ML System will deliver cca **770 m2 of BIPV laminates on facade**, which is another great example of **sustainable architecture** combining green and BIPV solutions.

This modern office building called “Tomorrow” in the Werksviertel district. The investment, valued at approximately €60 million, aims to achieve **Platinum-level DGNB certification**.



Visualization
FALK VON TETTENBORN
ARCHITECTS

FALK VON TETTENBORN ARCHITECTS

Greece – Multifunctional BIPV Roofs for Hospitals Projects by Renzo Piano



SNF General Hospital of Komotini



SNF General Hospital of Sparta



SNF University Pediatric Hospital of Thessaloniki



The **Stavros Niarchos Foundation (SNF)**, established in 1996 as a private global philanthropic organisation, has donated nearly €1 billion to more than 1,900 initiatives in 109 countries, making a lasting impact in culture, education, healthcare, and social welfare.

As part of the **Global Health Initiative**, SNF is funding the construction of **three state-of-the-art public hospitals** in Greece – in Komotini, Thessaloniki, and Sparta.

ML System has been selected to deliver **BIPV installations** for the new hospital buildings in Komotini, Thessaloniki, and Sparta in Greece. The projects will cover a total area of over **17,500 m²**, making it the second largest BIPV contract in Europe.



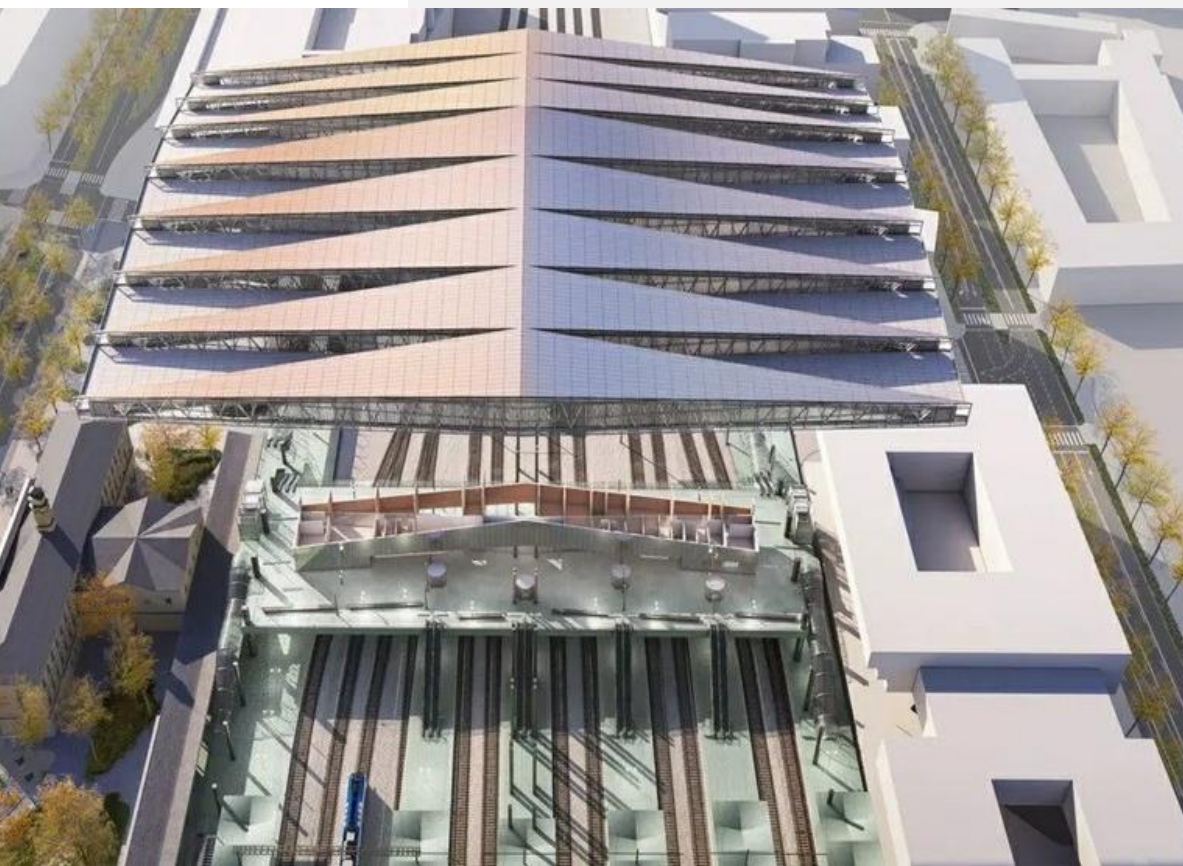
ML System will be supplying PhotonWall modules for the new headquarters of ING Deutschland — Hafepark Quartier Office (HPQO) — located in the heart of Frankfurt's rapidly developing Ostend district, right next to the European Central Bank.

In this fossil-free building designed to meet the highest efficiency standards (LEED Platinum) ML System will supply approx. 2,400 m² of integrated BIPV modules PhotonWall.

This project would not be possible without the passion, professionalism, and commitment of our partners: Rupert App GmbH & Co – façade contractor combining precision with innovation, MEIXNER SCHLÜTER WENDT – visionary architects bringing photovoltaics into the language of contemporary architecture, B&L Gruppe – developer investing in modern, responsible solutions, ING Deutschland – visionary partner who recognizes the potential of energy in architecture.

Thank you for your trust and collaboration. Together, we are creating buildings that generate energy, inspire people, and transform cities.

Railway station in Ljubljana



Railway station in Ljubljana is another "Railway Station project" in our portfolio.

Project for **8.400 m2 of BIPV roof glazing** was awarded in 2025 and deliveries started in August 2025 and will continue in 2026.



But we can go crazy as well :)





WE ARE CHANGING THE WORLD FOR FUTURE GENERATIONS