

Southwood Inc 株式会社サウスウッド

Portable Ultrasound AI diagnosis for everyone

About Southwood

HAIP's member

Founded in March 2023, a venture from the University of Tokushima and the University of the Ryukyus

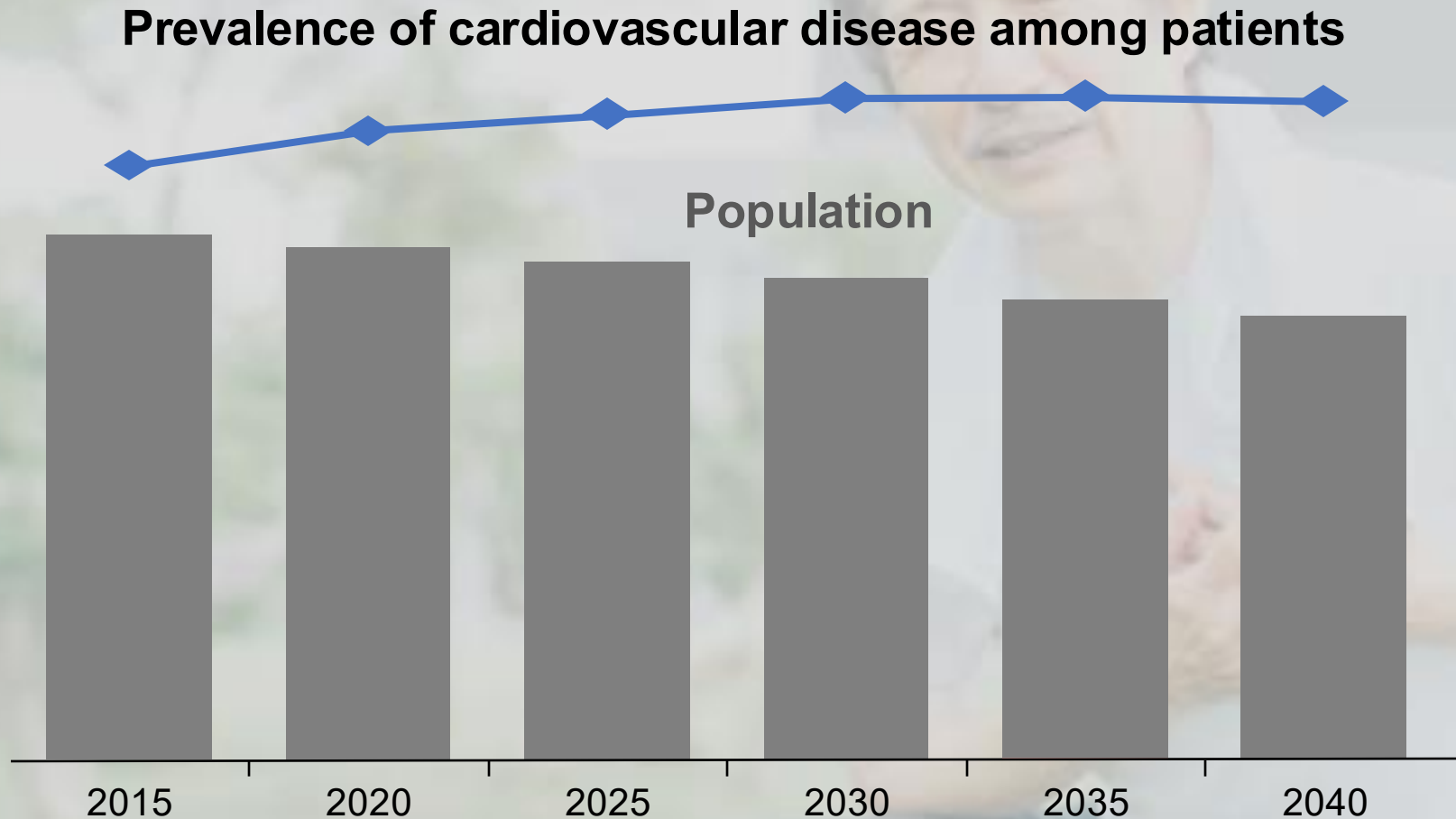
Focusing on ultrasound diagnosis support AI that will work with physicians anytime, anywhere through casual medical examinations

Trying to realize a society in which any predictive signs lead to a specialist.

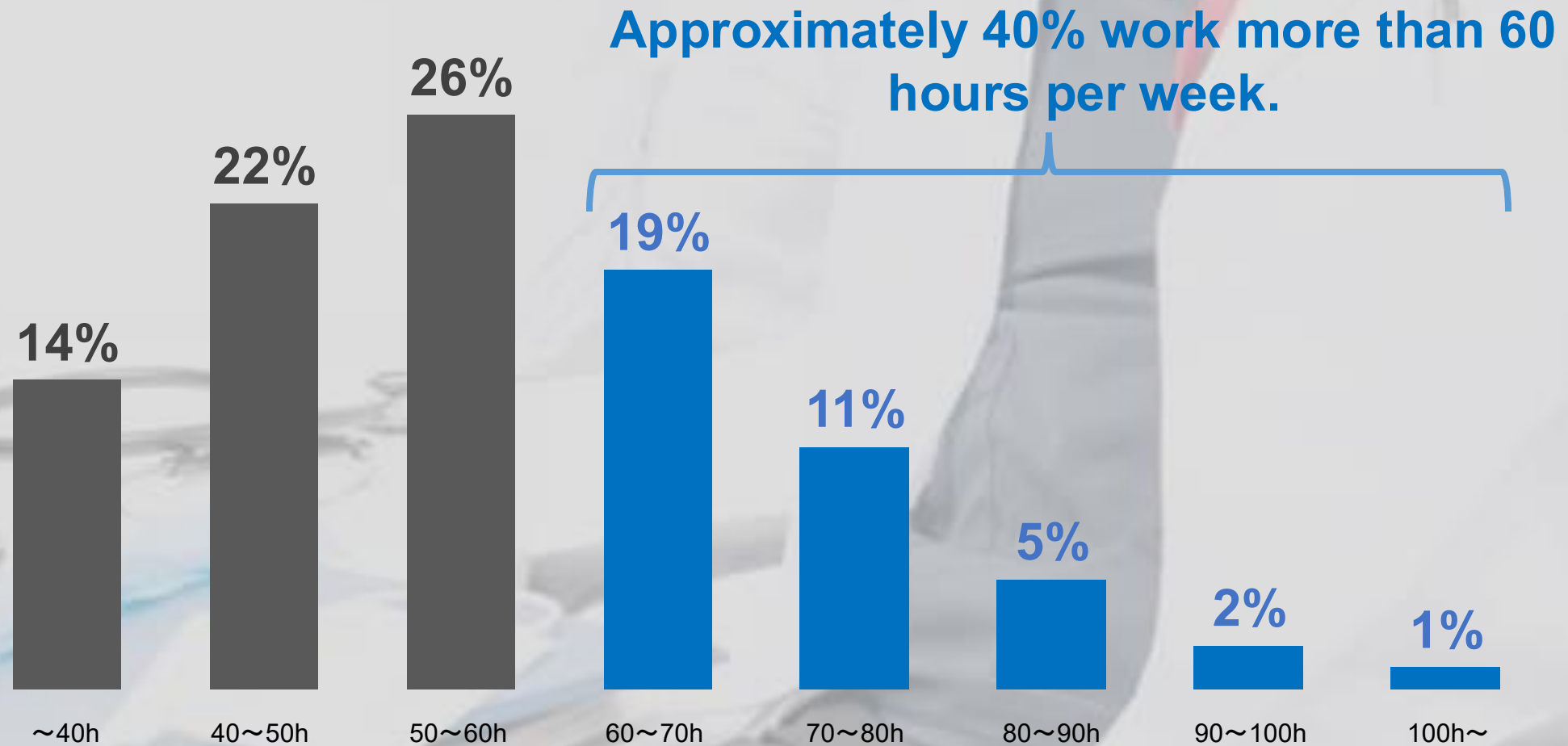


SOUTHWOOD

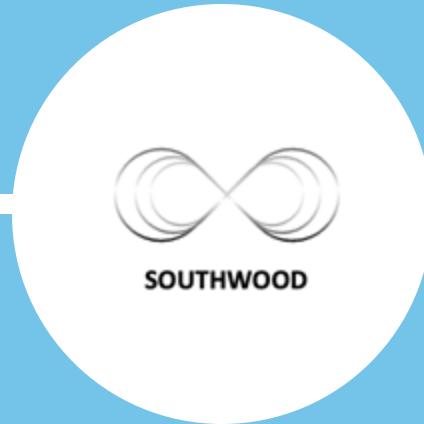
The prevalence of patients with cardiovascular diseases is expected to rise sharply by 2030.



“Meanwhile, physicians are facing increasingly long working hours.”



Portable Ultrasound



Diagnostic Support AI (Under development)

 Butterfly™



Portable ultrasound imaging system 「Butterfly iQ3」



Proven sales track record

Sold over 40 countries

User Friendly

**Used through simple
smartphone connection**

Sole Distributor in Japan

**Japan's first and only
authorized distributor**

Diagnostic Support AI (In progress)

Our AI

Estimates cardiac ejection fraction

AI automatically segments the heart and calculates the ejection fraction

Moving forward

Pipeline integration of multiple AI models

Integrating multiple AIs for different body regions to create a full-body diagnostic solution.

Including Professor Kusunose, the founder of the company, the business is being led by a team of eight members.



Kenya Kusunose

Physician, PhD

Founder

Professor, Graduate School of
Medicine, University of the

2011-2014 Cleveland Clinic, Cleveland, Ohio,

USA, Research Fellow

April 2020 – Lecturer, Department of Cardiology, Tokushima
University

March 2023 – Founded Southwood Inc.

July 2023 – Professor, Department of Cardiovascular, Renal,
and Neurological Sciences, Graduate School of Medicine,
University of the Ryukyus



Keiko Ito

Development



Takumasa Tsuji

Development Ph.D.



Masatoshi Taketani

Co-Founder



Tomoki Kurosawa

CEO



Kosuke Tomita

Outside Director, Certified Public Accountant
Seconded from AIAC (Industry-Academia
Collaboration Capital Co., Ltd.)



Tomoya Suzuki

Administration



Bilal Sahi

Sales

Advisors

Development-related:

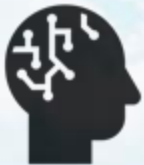
Experienced in medical device R&D and new business planning

Experienced in medical device R&D and regulatory compliance

Portable Ultrasound



Diagnostic Support AI

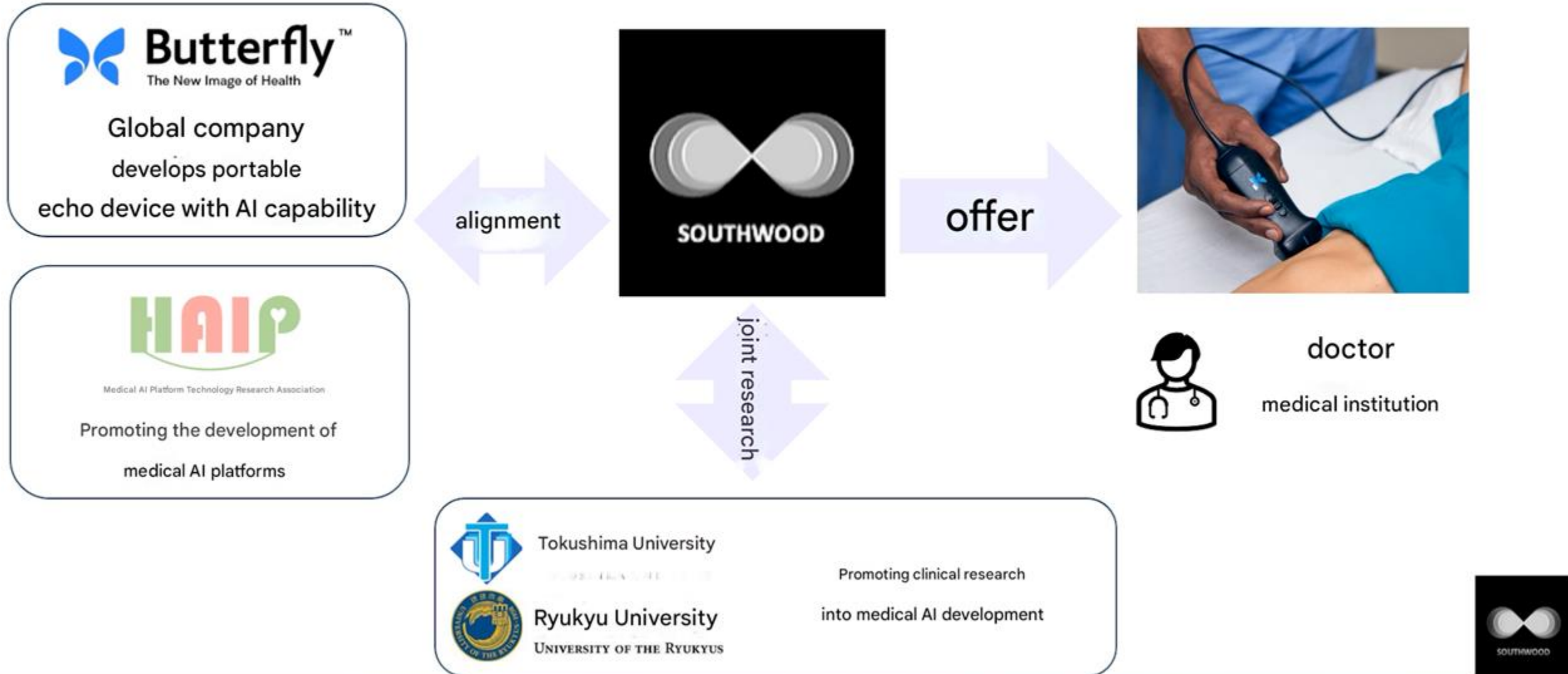


Our Vision

- 1. No requirement of Specialist**
- 1. Simple and highly accurate**
- 1. Allows for early disease detection**

business model

Promote collaboration and joint research with various institutions and provide information to medical facilities



Support AI



We are currently developing diagnostic support AI with HAIP's PF (Cloud).

And We want to develop next AI with various companies(Domestic/International) one after another

We hope to

- Establish a partnership with research institutions and AI companies specializing in ultrasound imaging (license in to Japan, license out to respective countries)

- Seeking introductions and opportunity with innovative ultrasound AI companies.