



Let's Collaborate, Let's Insulate!

agreka build Directors



Antoinette Vandy

Chief Executive Officer
Architectural Designer &
Regenerative Design Consultant
M Arch RIBA II

Experienced in bio
based construction
materials



My Linh Nguyen

Chief Operating Officer
London Interdisciplinary School
MASc in Interdisciplinary
Problems & Methods

Serial social entrepreneur
in farming & build
materials



Dr John Collins

Non-Executive Director
Cambridge Judge Business
School & PhD in Nuclear
Physics & Microelectronics

Technologist & Expert in
Commercialising
Innovation

Technical Team



Lai Han Ming

Technical Lead
Imperial College London
PhD in Civil & Environmental
Engineering

Innovated with low
carbon cement &
bentonite



Dr. Ha Phan

R&D Lead
University of Newcastle
PhD in Chemical Engineering

Expert in
biomass-derived carbon
& nanostructures

ual: central
saint martins

MANCHESTER
1824

LVMH

TU Delft



THE LONDON
INTERDISCIPLINARY
SCHOOL

YOUTH
CO:LAB

RMIT
UNIVERSITY



DE BEERS GROUP



UNIVERSITY OF
CAMBRIDGE

IMPERIAL

M
MOTT
MACDONALD

Sj SURBANA
JURONG



Newcastle
University

IBM





**£400M of wheat
straw is wasted,
producing
220M Tons of CO₂
every year in the
UK alone**

**The UK has the
most poorly
insulated homes in
Western Europe.
British homes lose
3°C every 5 hours
on average**

**Limited
sustainable
insulation options:
conventional
insulation poses
health &
environmental
hazards**



CONVENTIONAL INSULATION

Contains carcinogens
such as formaldehyde,
asbestos & VOCs

Difficult to install
& wasteful

Highly polluting
& energy intensive to
manufacture

Triggers dermatitis
& skin allergies

	 WHEATEX	PIR/XPS
DURABLE	✓	✓
LIGHT WEIGHT	✓	✓
COST EFFECTIVE	✓	✓
MOLD RESISTANT	✓	✗
EASY TO INSTALL	✓	✗
FIRE RESISTANT	✓	✗
NON TOXIC (-VOCs)	✓	✗
CIRCULAR	✓	✗
AIR FILTRATION	✓	✗
SOUND PROOFING	✓	✗



WHEATEX

*The only true
circular
bio-based
insulation on the
market at
competitive
price!*

100% Straw, No Synthetic Chemicals, Binders or Additives

RESEARCH SUPPORT:



The
University
Of
Sheffield.

/AMRC
Advanced Manufacturing
Research Centre

UDS

Université de
Sherbrooke



MOISTURE RESISTANT



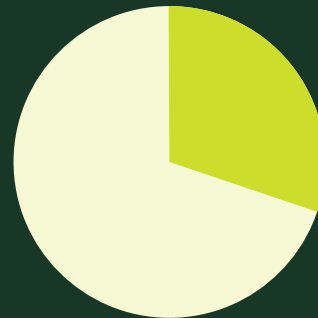
FLAME RESISTANT



36x
potential
market share
growth

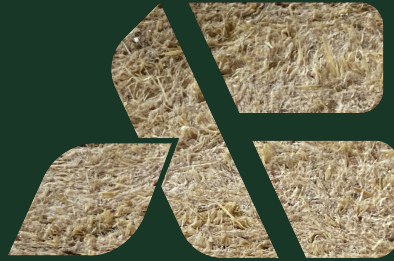
**Biobased insulation increase from 1% to
30% of EU insulation market by 2030**

£2.16B in 2030



- *Net Zero regulatory incentives*
- *Advance in green tech & pricing*
- *Growing demand for energy-efficient builds*
- *Retrofitting of old buildings*
- *90% of insulation materials on the market are synthetic*

NET-ZERO AGRICULTURE

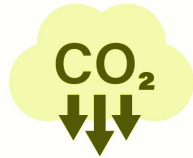


SOLUTION PROVIDERS

NET-ZERO CONSTRUCTION



***80% reduction in
embodied carbon
of insulation***



***3-10% increase
in property
value***



Raw Straw



Disinfected Bales



Straw Insulation Batt

Value From Waste

We work

Standardise
storage for quality
control

Utilise spare storage
& production
capacity of local
farms

with local

Train & Upskill
Rural Talent

Reduce production
cost & create value

farmers to

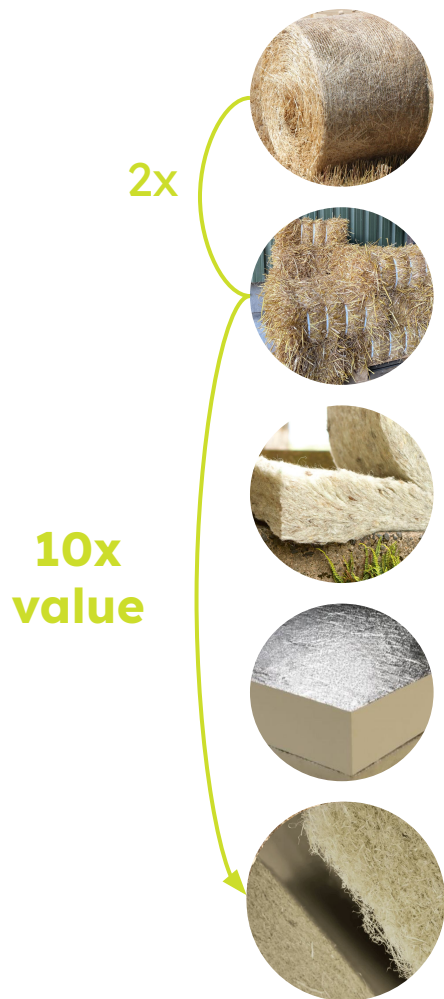
Deliver Directly to
construction sites

Minimise
transportation cost

**Higher value products
for farmers**

**Non Toxic Regenerative
insulation**

**Low CO₂ production &
transportation**

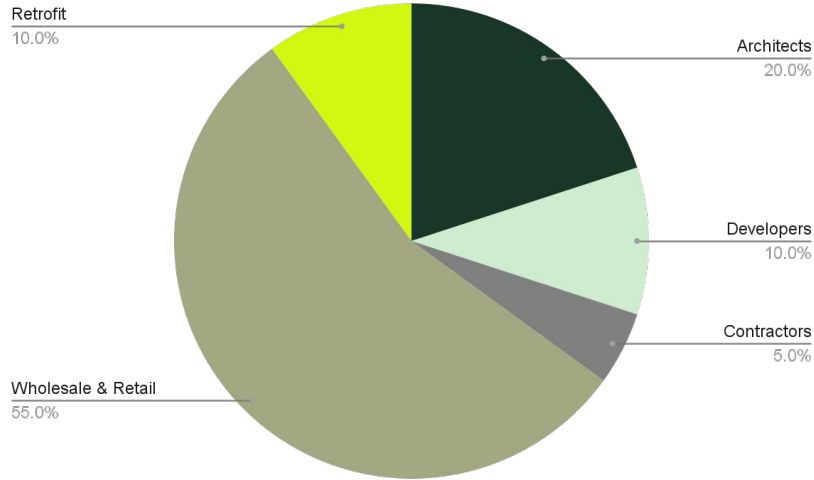


Raw wheat	£0.63/board	£
Disinfected bales	£1.46/board	£
Hemp	£10.53/board	££
PIR (Polyisocyanurate)	£17.5/board	££££
WHEATEX	~£10-15/board (target price point to remain competitive)	££

*Standard board size of 1000 mm x 1000mm x 50mm

DISRUPTING THE MARKET

We're providing an innovative solution to a variety of different clients



B2B To Construction Sites

Targeting 35% architects, developers & contractors clients via direct online orders and direct shipping to construction site

Price at £15/m²

B2B Wholesale & Retail

Targeting 55% wholesale & retail clients with 32% markup, direct shipping to stores & warehouses

Price at £10.5/m²

Retrofit Clients

Targeting 10% retrofit clients, providing design consultancy

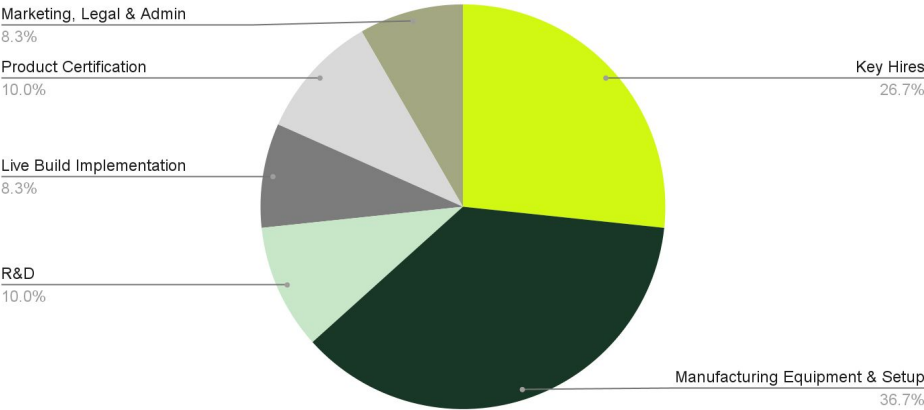
Price at £15/m²

Successful Pre-Seed Raise

Total Funding Raised £600,000

- Pre-seed SEIS Round £250,000
- Innovate UK Smart Grant Winner £350,000
beating the 1.7% success rate!

We exceeded our fundraising target by £250,000



EIS Approved for
£500,000

Key Hires	£120,000
Manufacturing Equipment & Setup	£125,000
Product & Process R&D	£30,000
Live Build Implementation	£15,000
Product Certification	£55,000
Legal & Admin	£5,000
Total	£350,000

AGREKA has exceeded the initial funding target!

Our Investors:

SFC Capital

nePlanetCapital

Innovate UK Smart Grant Winner

Successful Pre-Seed Raise

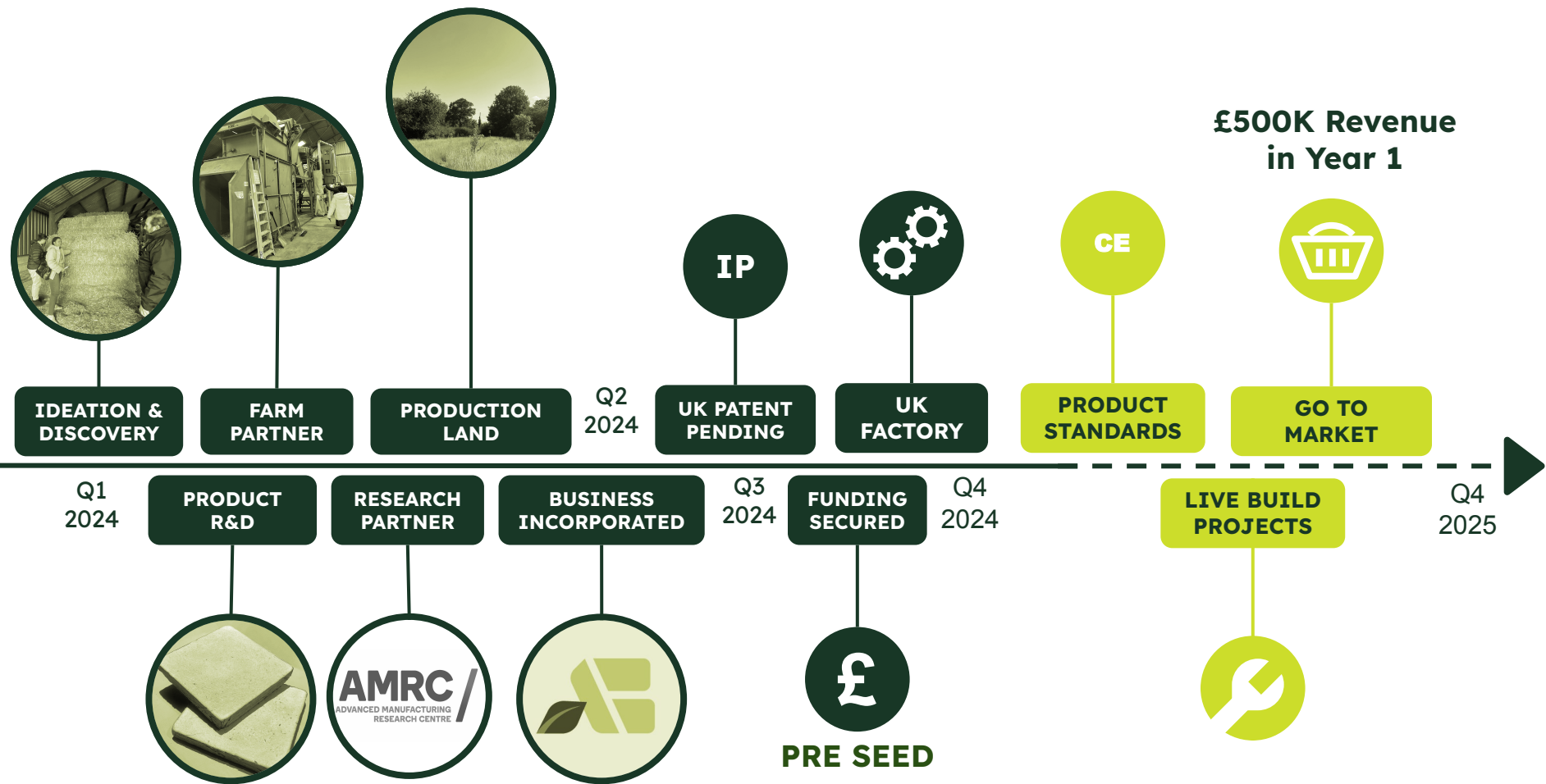
Total Funding Raised £600,00

- Pre-seed SEIS Round £250,000
- Innovate UK Smart Grant Winner £350,000
beating the 1.7% success rate!

Awards & Accolades

- Winner of Founder 50 Award, Central Saint Martins
- Winner of Big Innovation Pitch Award, Futurebuild
- Winner of Imperial College London's Climate Entrepreneurship Pre-Accelerator Pitch Competition
- Impact Shaker's *Top 10 Innovative Startups to Watch*





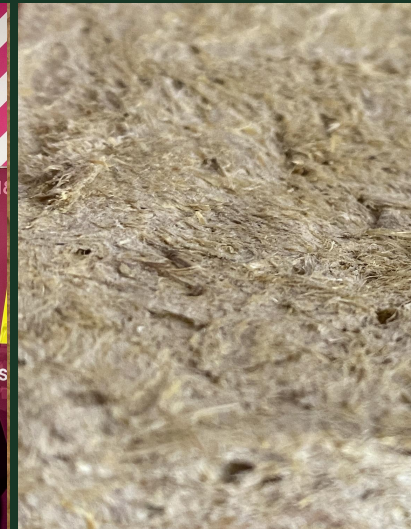
A Year of Innovation

- Moved to TRL 6 in Q2 2025
- Registered as a UK Limited Company
- SEIS/EIS Advance Assurance Authorised with HMRC
- Secured 2 Farm Partners to Supply Raw Materials, Storage & Machinery
- IP Application for the Product & Manufacturing Technology
- Secured Industrial Space to Set up Production in Chester, UK
- Secured £250,000 SEIS investment led by SFC Capital with co-investor One Planet Capital
- Awarded £350,000 Innovate UK Smart Grant
- Secured a sponsored Research partnership with University of Sheffield AMRC to refine Manufacturing Techniques
- Secured expert advice from the scientist on industry standards & performance
- Network of Architects Eager to Integrate the Finished Product into their Designs with 20 LOIs in the pipeline



Join Us On Our Mission...

- **EU Construction Partners** to Collaborate on Product Testing & Live Build Projects
- **EU Research Partners** to Scale us production to full commercial output
- **EU Retail Partners & Stockists** to Drive Product Distribution & Market Reach





Email: contact@agrekabuild.co.uk

Website: agrekabuild.co.uk

Linkedin: [/agreka-build-ltd](https://www.linkedin.com/company/agreka-build-ltd)