

Honeywell

# WHO ARE WE AND WHAT IS OUR HISTORY?

ELTEK Elektronik Teknoloji A.Ş. for  
distribution of HONEYWELL



Bull



Merger HONEYWELL & BULL  
for ATM market creation



Acquisition of **ELTEK**  
naming rights and  
company establishment.

Worked on  
providing ATM  
service support.



Re-opening of **ELTEK** as an  
engineering and consultancy  
company.



1977

1990

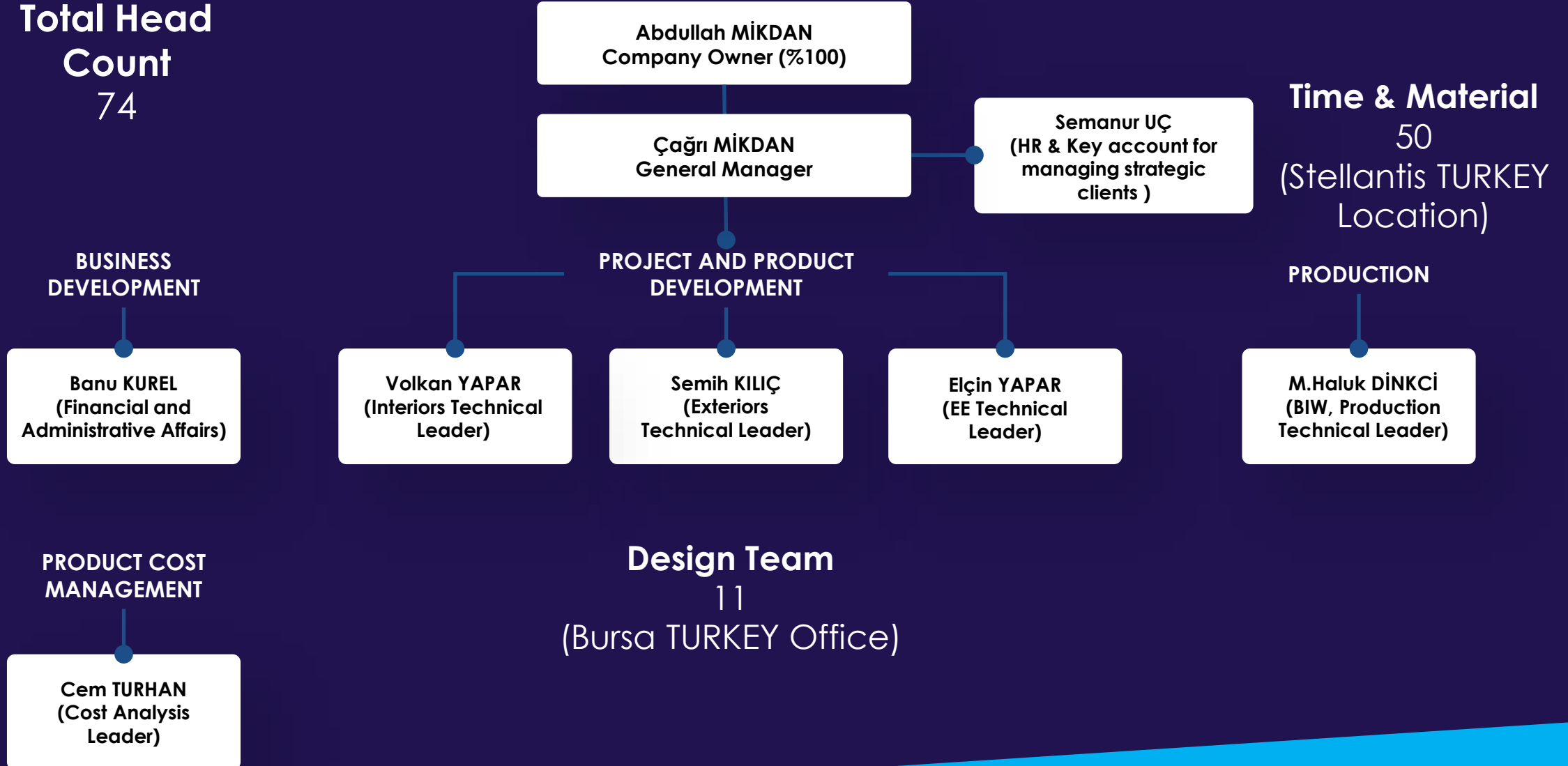
1998

2023

# OUR COMPANY ORGANIZATION

**Total Head Count**  
74

**Time & Material**  
50  
(Stellantis TURKEY Location)



# OUR COMPANY ORGANIZATION



**Abdullah MİKDAN**  
Company Owner (%100)



**Çağrı MİKDAN**  
21 YEARS



**Semanur UÇ**  
6 YEARS

**BUSINESS  
DEVELOPMENT**



**Banu KUREL**  
28 YEARS

**PROJECT AND PRODUCT  
DEVELOPMENT**



**Volkan YAPAR**  
20 YEARS



**Semih KILIÇ**  
22 YEARS

**Elçin YAPAR**  
20 YEARS

**PRODUCTION**



**Haluk DİNKÇİ**  
30 YEARS

**PRODUCT COST  
MANAGEMENT**

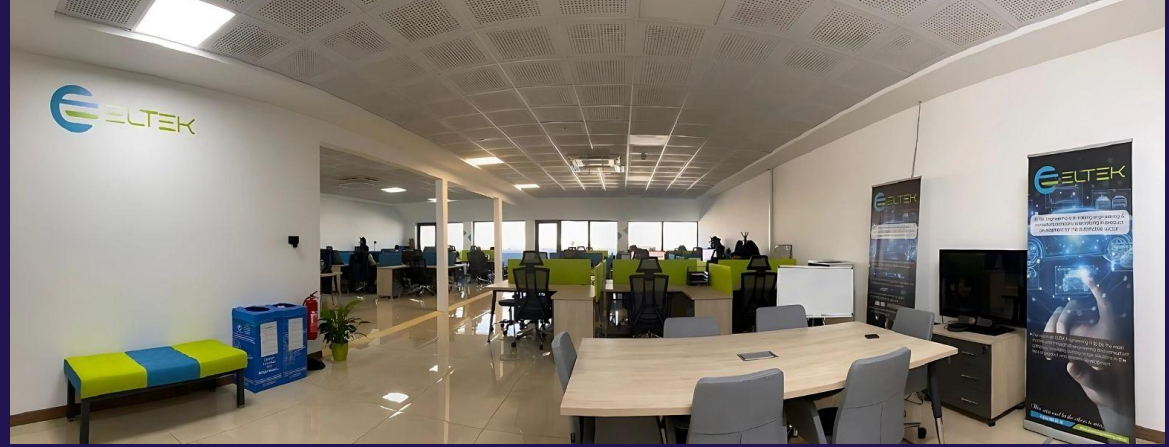
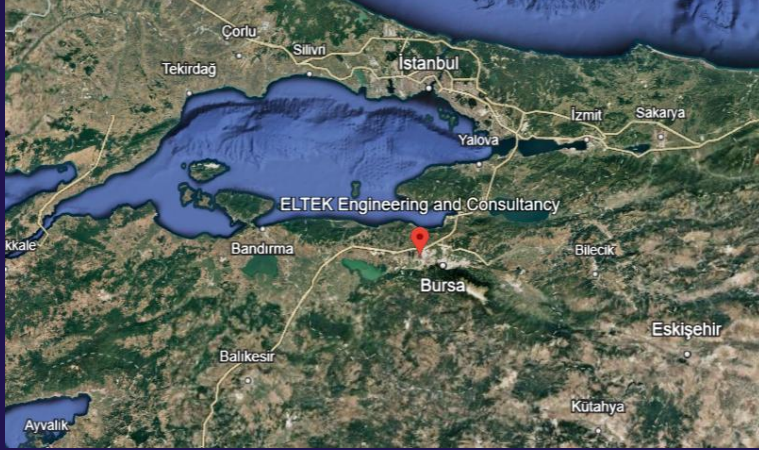


**Cem TURHAN**  
30 YEARS

**Design Team**

Average experience of **5 years** in the automotive sector.

## WHERE ARE WE ?



**ELTEK DANIŞMANLIK VE  
MÜHENDİSLİK SANAYİ VE TİCARET A.Ş.**  
Ertuğrul Mah. 128. Sok. Tuşpa Plaza No: 2A  
Ofis: 55-56 16235 NİLÜFER/ BURSA TURKEY



**[www.eltekengineering.com.tr](http://www.eltekengineering.com.tr)**



**[info@eltekengineering.com.tr](mailto:info@eltekengineering.com.tr)**



**+90 850 377 00 85  
+90 224 955 00 35**



**[/eltekengineering](https://www.instagram.com/eltekengineering)**





# WHAT IS OUR CAPABILITIES ?

## PROJECT AND PRODUCT DEVELOPMENT

### PROJECT MANAGEMENT

#### PRE-DEVELOPMENT

- Concept Feasibility
- Ergonomics Evaluations
- Benchmarking
- CAS Modelling
- Knowledge Based Engineering (KBE)

#### DEVELOPMENT

- Part Design
  - Sheet
  - Plastic
  - Rubber
- System Design
  - Exterior (Bumper, cover etc.)
  - Interior (IP, CC, DP etc.)
  - BIW
  - Wiring
  - Chassis
- Reference and Tolerance System Definition
- PLM Management

#### INTEGRATION & VALIDATION

- Virtual Integration
  - Packaging
  - Geometric Dimensioning and Tolerancing (GD&T)
- Cost Engineering
- CAE Analysis (With external support)
  - Structural
  - Crash
  - Topology and Topography Optimization
  - Acoustic (NVH)

## MACHINE AND PROTOTYPE PRODUCTION

### PROJECT MANAGEMENT

#### MACHINE

- Control Fixtures
- Special Designed Machines
- Line Setup
- Process Definition
- Mold Design

#### PROTOTYPE

- Master Style Models
- Master Cubing
- Compotest
- Additive Manufacturing

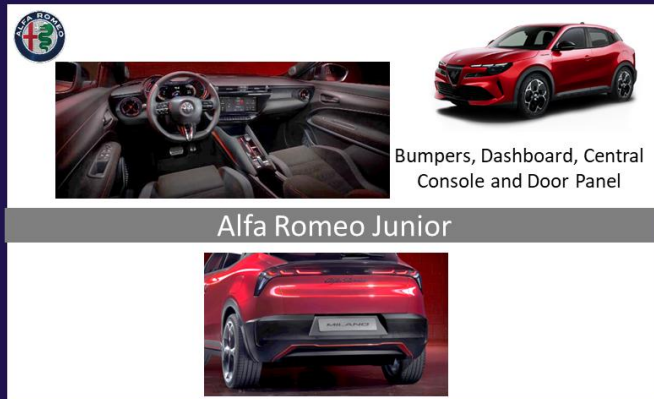
### COMPOSITE PARTS PRODUCTION

- Carbon Fiber Parts
- Aramid Fiber Parts
- Glass Fiber Parts
- Hybrid Fiber Parts

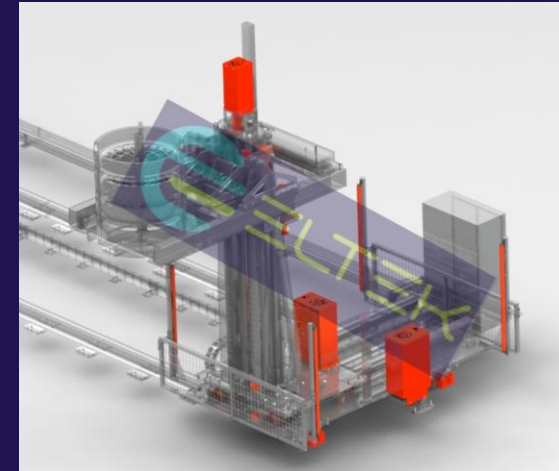
**COMPLETED**

## WHAT IS OUR CAPABILITIES ?

### PROJECT AND PRODUCT DEVELOPMENT



### MACHINE AND PROTOTYPE PRODUCTION





## WHAT IS OUR CAPABILITIES ?

### Our Customers with Contracted RFQs



### Waiting RFQ Agreements



# WHO ARE OUR PARTNERS AND COLLABORATORS ?



## ■ For Hardware

25 WS Laptop, 1 HP Server

## ■ For Office Software

25 Microsoft 365 Business Standart  
1 Microsoft 365 Business Premium

## ■ For PLM Software

20 CATIA V6 & PLM  
2 CATIA V5  
1 Solidworks  
20 Siemens NX

## ■ For Connection (Communication and internet)

150 Mbps (Fiberoptic, closed circle) Metro Internet

## ■ For Insurance (Health and personal accident)

## ■ For Car Rental

## ■ For Food Card and Fuel



LICENCED

# WHO ARE OUR PARTNERS AND COLLABORATORS ?

## Start-up Agreement with Dassault France.

## Official partnership agreement.

CUSTOMER PROCESS EXPERIENCE | OCTOBER, 2023  
ELTEK ENGINEERING GO LIVE!



**Client**



**Partner**

**Implemented Solutions**



Eltek Engineering is a leading consultancy firm specializing in product development for the automotive sector. Our team of highly skilled engineers and designers offers customized solutions that align with the specific needs of our clients. Leveraging our vast experience and commitment to excellence, we are able to tackle challenges and deliver outstanding results.

- Number of employees: 1-50
- Company revenue: not available
- Company website: <https://eltekengineering.com.tr/>

**Industry Process Experience:**  
Equipment Mechanical Engineering (start-up)

**Users:** 10-20

**Key Trigram/Portfolio:**  
Design/Engineering: MDG-OC

**"We use CATIA Mechanical Designer to access the tools necessary for transforming our conceptualized product designs into tangible reality."**  
- Cagri MIKDRN, Technical Manager, ELTEK ENGINEERING

DS sales interlocutor email address: hakan.dadagloglu@3ds.com  
Customer Site ID: 300000000183057  
Partner Site ID: 200000000011337

Confidential - 3DS Partners and 3DS internal use only  
Important notice: Please note that customers mentioned in this slide are NOT public references. If you are looking for public Customer references please visit the 3DS.com website




**En. G**  
**Engineering**  
**Consulting**  
*Enrico Gobetto*

## PARTNERSHIP (IN DISCUSSION)

( expleo )

**axalis**

## WHY US ?



**Flexible working according  
to time and conditions**



**A team that knows what the  
customer requests**



**Effective project monitoring  
and management experience  
in every field**



**Highest quality and cost-  
optimized operation**

**Always great service, at an  
accessible rate**



**Turnkey project  
management in the form  
of work packages**



## OTHER PROJECTS PORTFOLIO



Palio & Albea  
Doblo (1.generation)

Fiorino (For other brands CITROEN Nemo & PEUGEOT Bipper)

Doblo (2.generation) (For other brand RAM Promaster City)

Doblo FaceLift (For other brand OPEL Combo)

Linea

Panda

Panda (New)

Tipo (New)



Ducato

500 L

500 BEV

600 BEV



**Special Projects**

Armored Doblo

Tipo Race Car



Renegade  
Compass



Mokka



C3



Master  
Duster



Grecale  
Quattroporte





# THANKS



<http://www.eltekengineering.com.tr>