

Scalable employee wellbeing & burnout prevention





**4 out of 5 employees are at
risk of burnout this year**¹

Equivalent
-CHF 10 billion
cost for the Swiss economy in 2014²

CHF 195 per employee & month loss for companies in 2014.²
11.3% of salaries are lost in presenteeism.³
USD 300 billion loss for companies in 2023.⁶

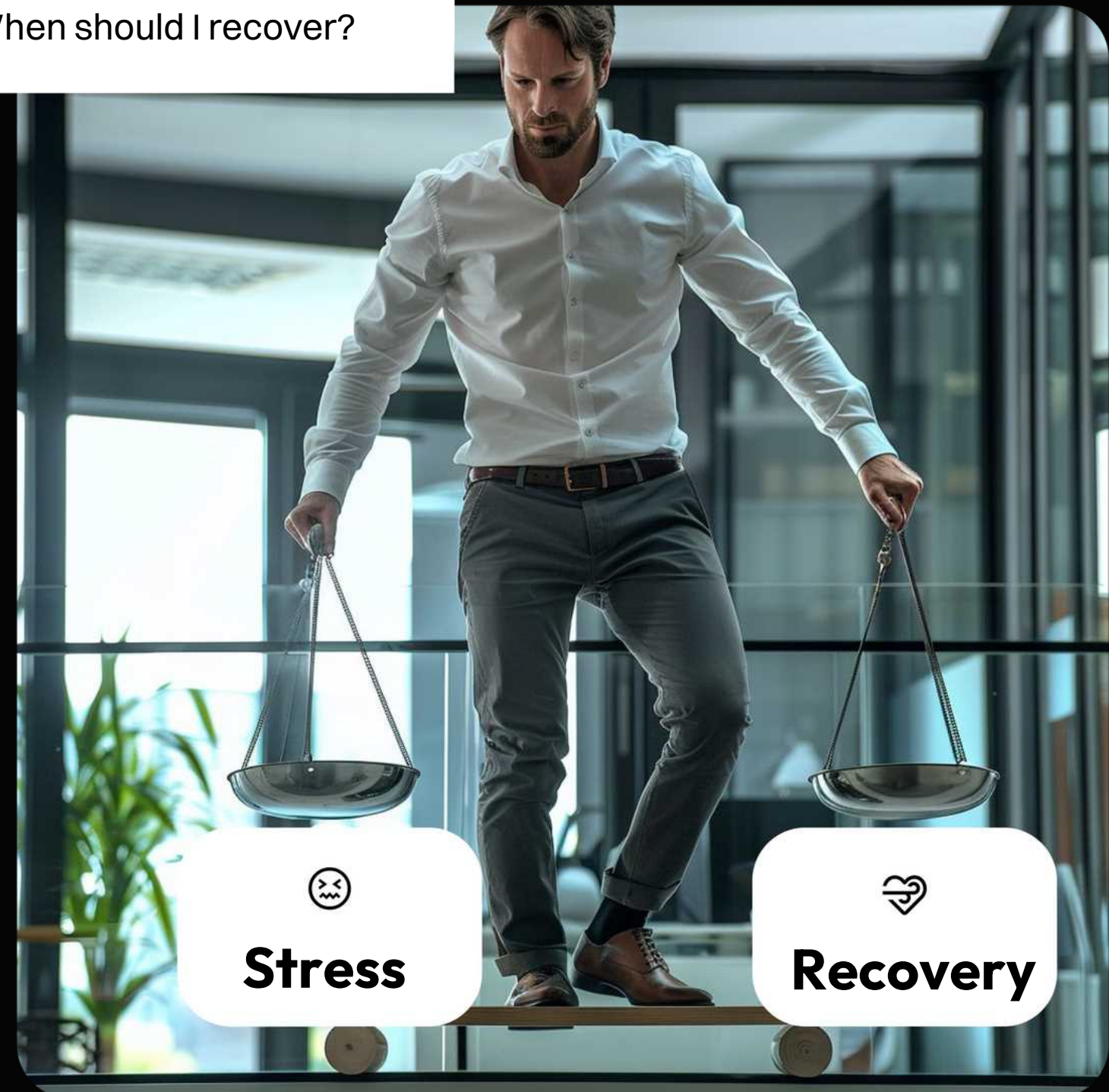
Resilience is the key

Resilience prevents burnout

Resilient people are able to balance stress and recover well.⁴

Unfortunately, we are inherently terrible at balancing stress and recovery.⁵

How to stay balanced?
When is it best to perform?
When should I recover?



Working solution is too expensive

Resilience coaches are not scalable

Leading athletes and executives are increasingly turning to personal coaches to balance their stress and recovery.

Unfortunately, few of us can afford one, until now...

limited availability

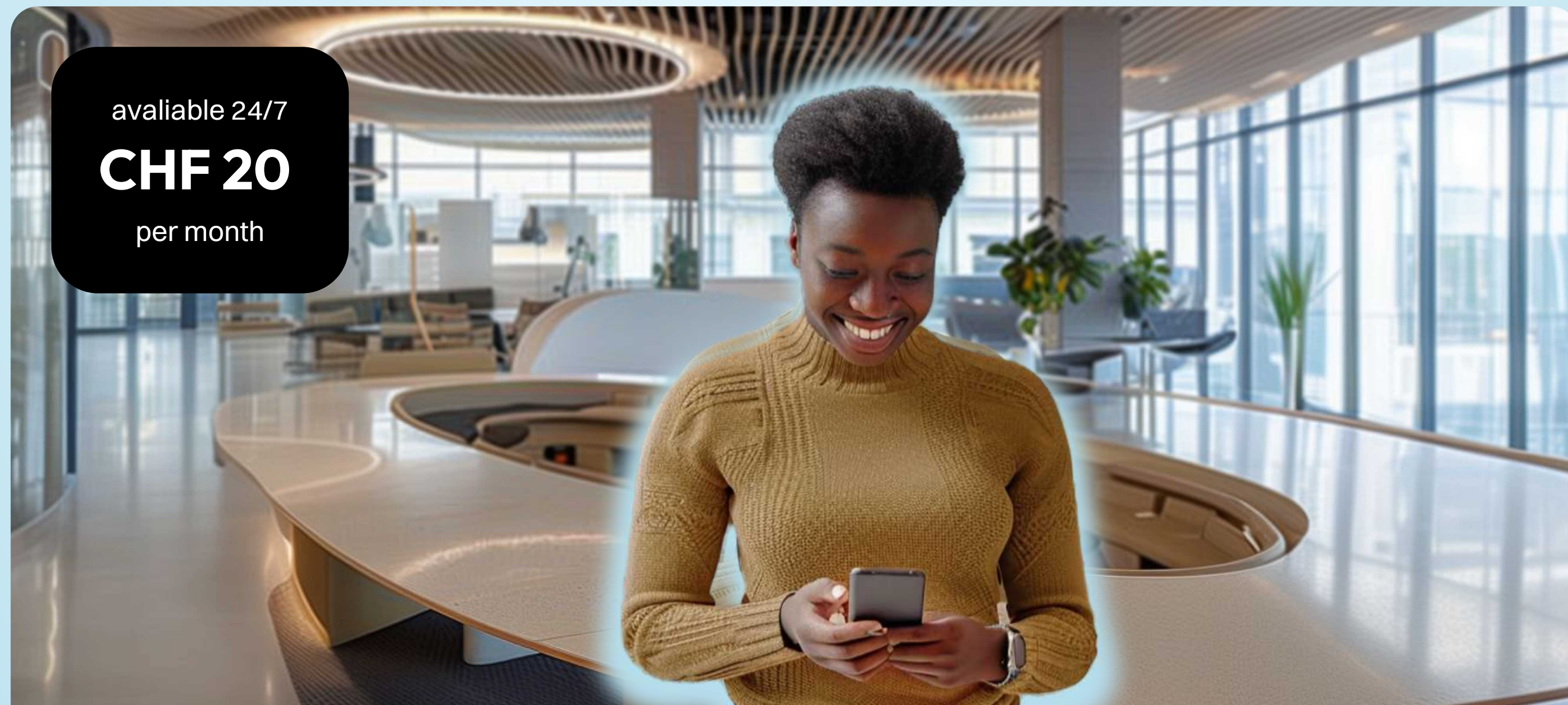
CHF 200+

for 1 session



Solution that is easy to scale

We provide every employee with a personal resilience coach that is always available



AI coach infused with innovative algorithms

Our AI coach seamlessly integrates multiple data sources, providing continuous awareness of a user's biometric, contextual, and behavioral status.

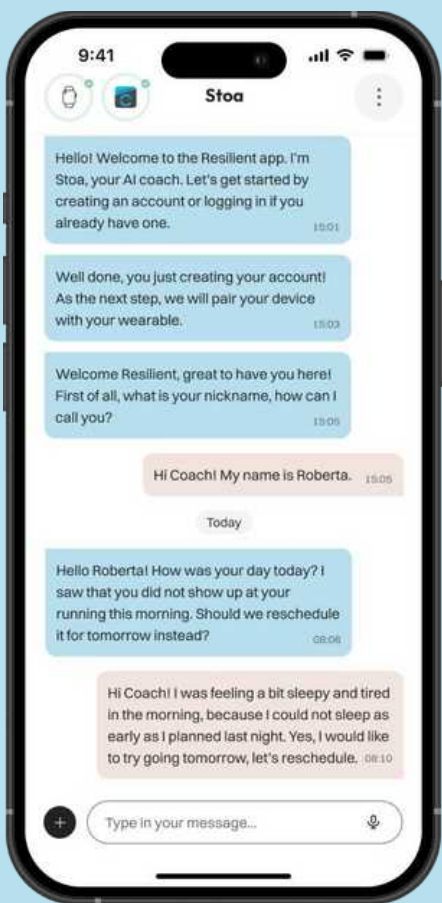
Trained by Swiss medical experts

100+ years experience



Semantic analysis

Never forgets anything



Connected with third-party wearable



Gets more information than only what people report.

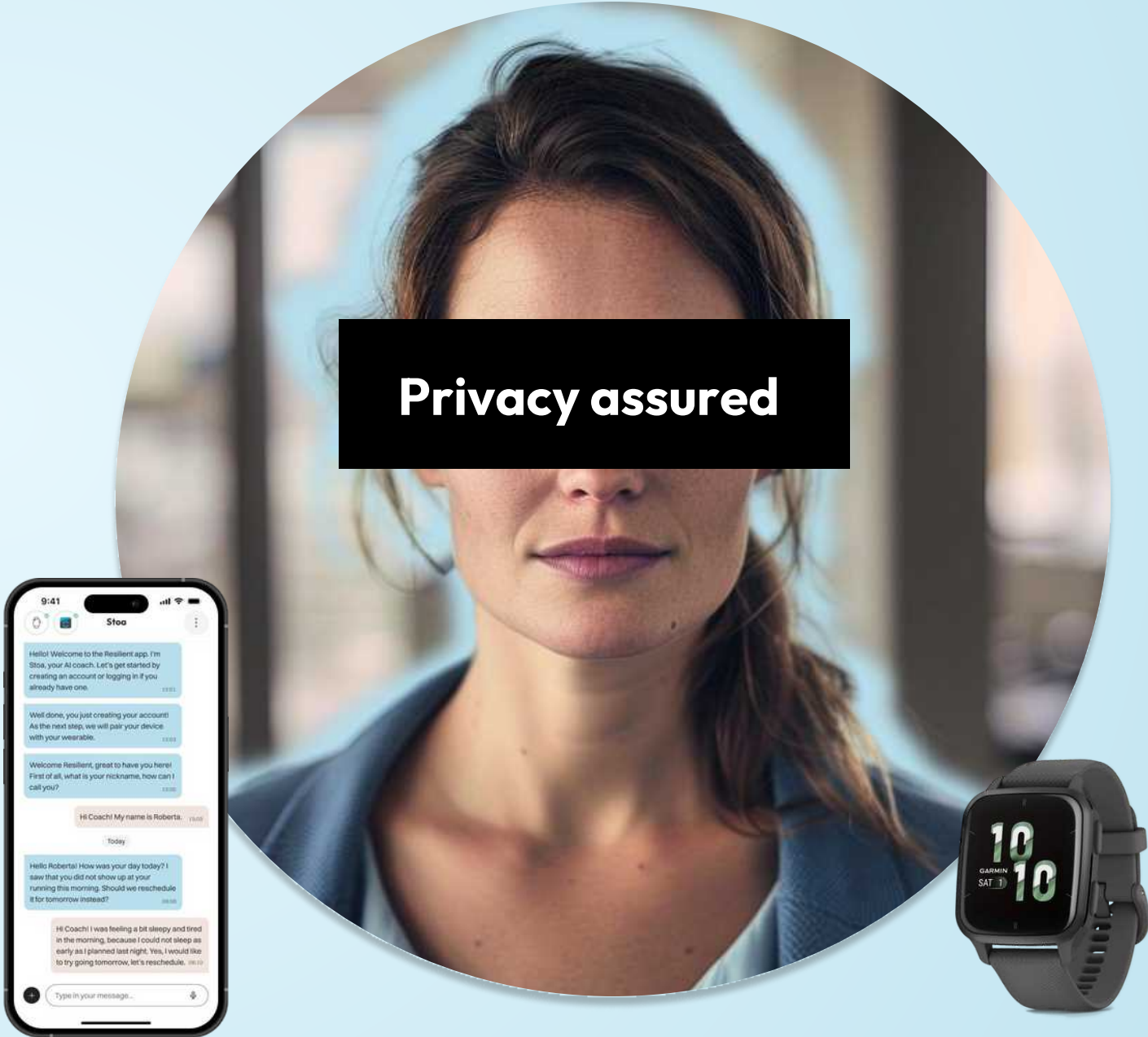
Automatic improvement



Easy to use

**“It’s easy, I only have to wear
a watch and talk to the
chatbot!”**

- employee from the pilot 2024



Employers get the tool they wish for



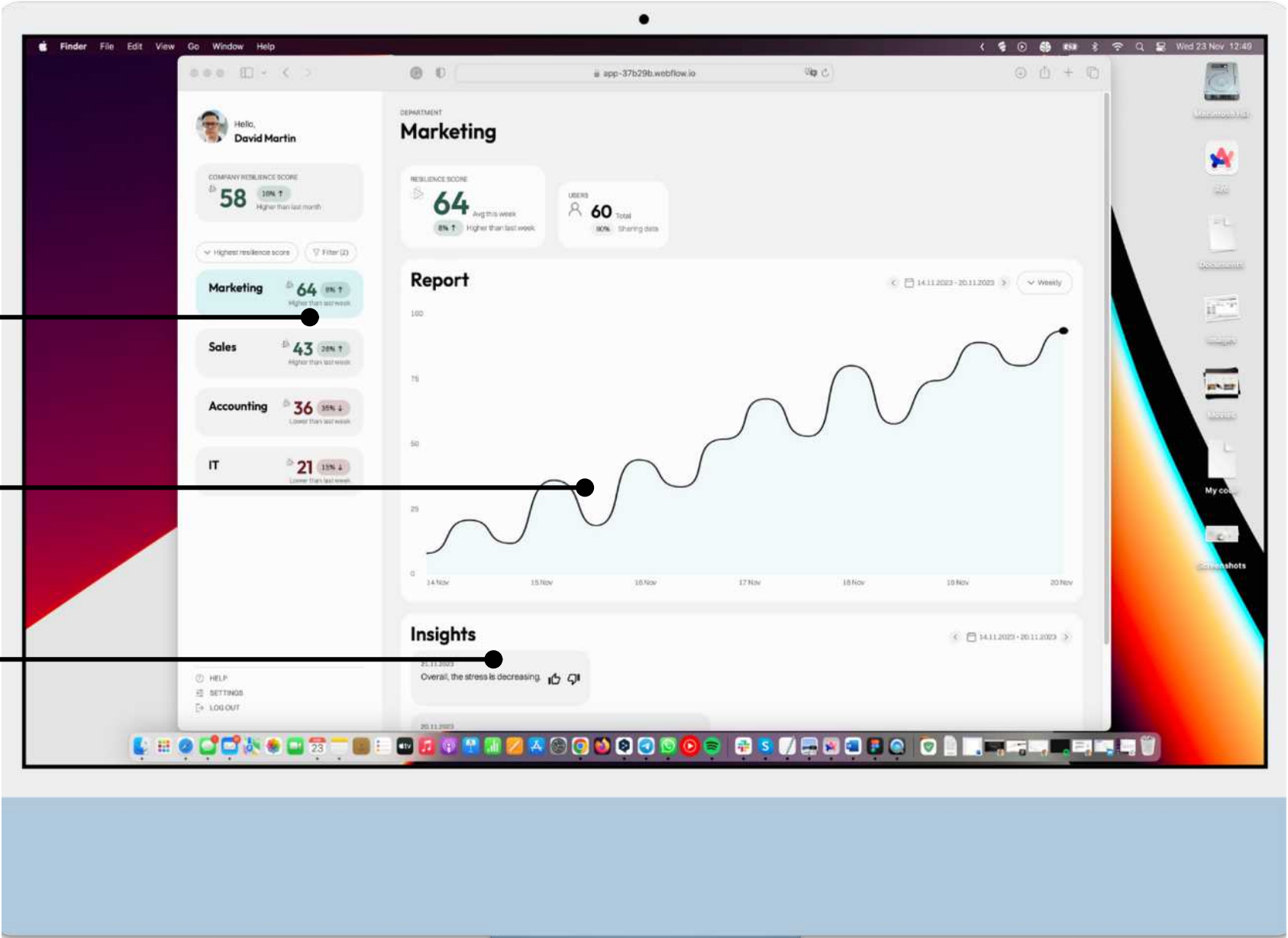
Dashboard to understand the wellbeing within the organization

Departments at risk for burnout become identifiable

Aggregate and anonymized data

Chatbot available to answer additional questions

See improvements and uncover departments with systemic issues





Increases employees energy and organizational wellbeing



Our AI coach not only prevents burnout but also actively enhances employees' energy, focus, and productivity, thereby boosting overall organizational wellbeing.

B2B SaaS business model

Company pays per employee

Product development plan

- ✓ Company pays for the wearables.
- ✓ AI Chatbot access for 1 month for the user.

CHF 20 / per user monthly
invoiced yearly

Basic plan

- ✓ Basic wearable (Garmin, Venu SQ series) is provided for the user. Wearable upgrade option available.
- ✓ AI Chatbot access for 1 month for the user.

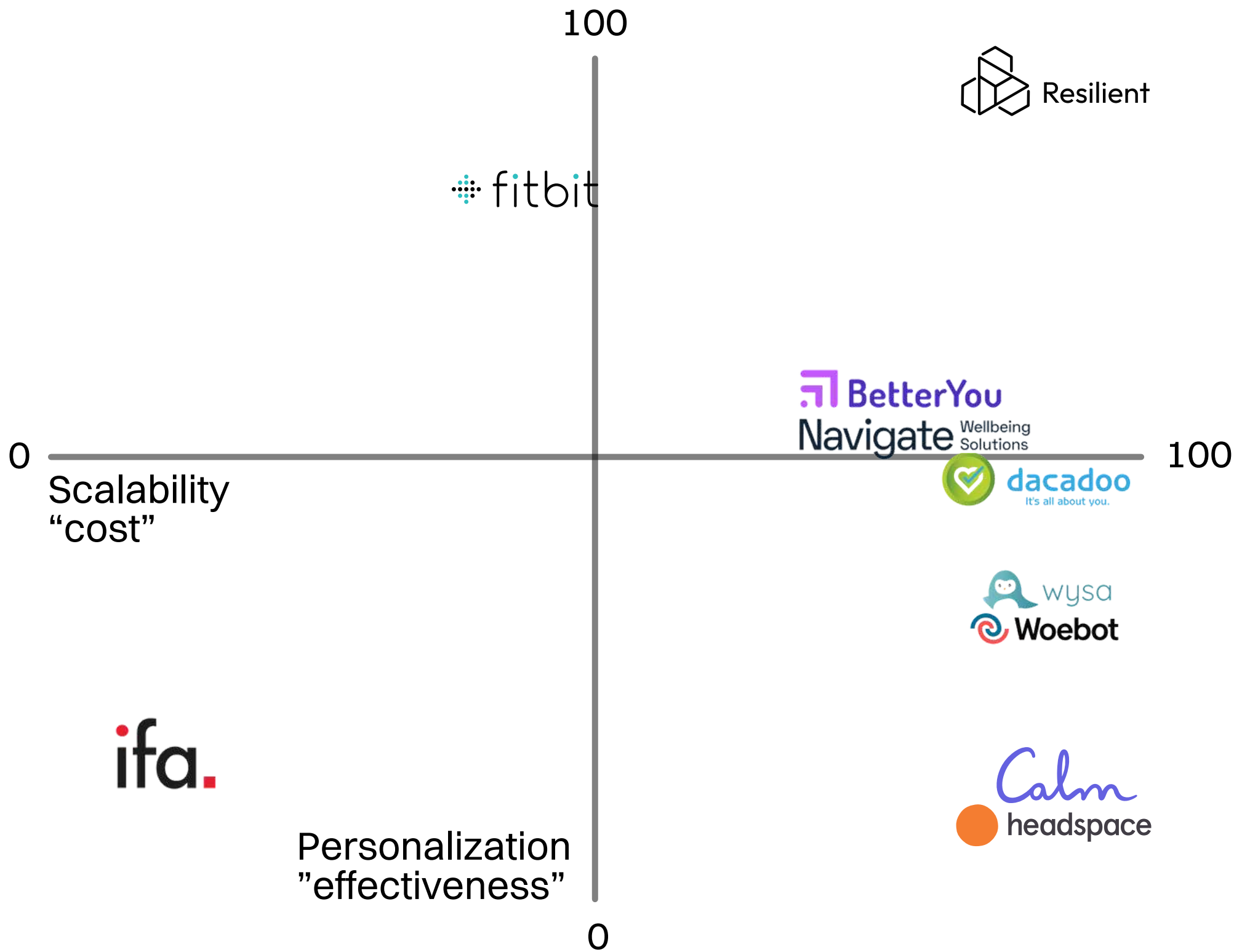
CHF 30 / per user monthly
invoiced yearly

Enterprise plan

- ✓ Everything from the basic plan.
- ✓ Access to the dashboard.
- ✓ Enterprise-ready scale.

Contact us

Best known competitors



Hyper-personalization at unprecedented scale.

- ✓ Trained by Swiss therapists
- ✓ Negotiates and tracks goals
- ✓ Coaches step-by-step
- ✓ Engineered to scale
- ✓ Evidence-based solution backed by rigorous research

Accomplished

	2022	2023	2024
Product development	Wearable data validated to replace ECG.	V0.1 Alpha.	V0.2 Beta.
Market & business	Philip Morris International (PMI).	30 user pilot at PMI.	300 PMI users. 2nd MNC, 30 users.
Finance non- dilutive	CHF 1.7M Innosuisse Project. + 8 experts until 2025.	CHF 100k FIT loan.	CHF 50k SPEI grant. CHF 30k FoHG.
Finance dilutive	Co-founders investment.	CHF150k convertible loan.	

Launch to 100 corporate customers & 71 FTEs in 5-years

	2025	2026	2027	2028	2029	2030
Product development	V1.0: AI Text V2.0: AI Voice	V3.0: AI Video & family sharing	V4.0: AI in VR	V5.0: AI plugin marketplace	V6.0: Hardware integration (screens, speaker, cars...)	V7.0: AI Smart home automation
Companies	2	6	12	25	50	100
Users	650	3,335	10,835	100,835	220,835	520,835
FTEs	5	7	14	27.2	43	71

Strategy

B2B Advertising

- 1. Trade show
- 2. Linkedin

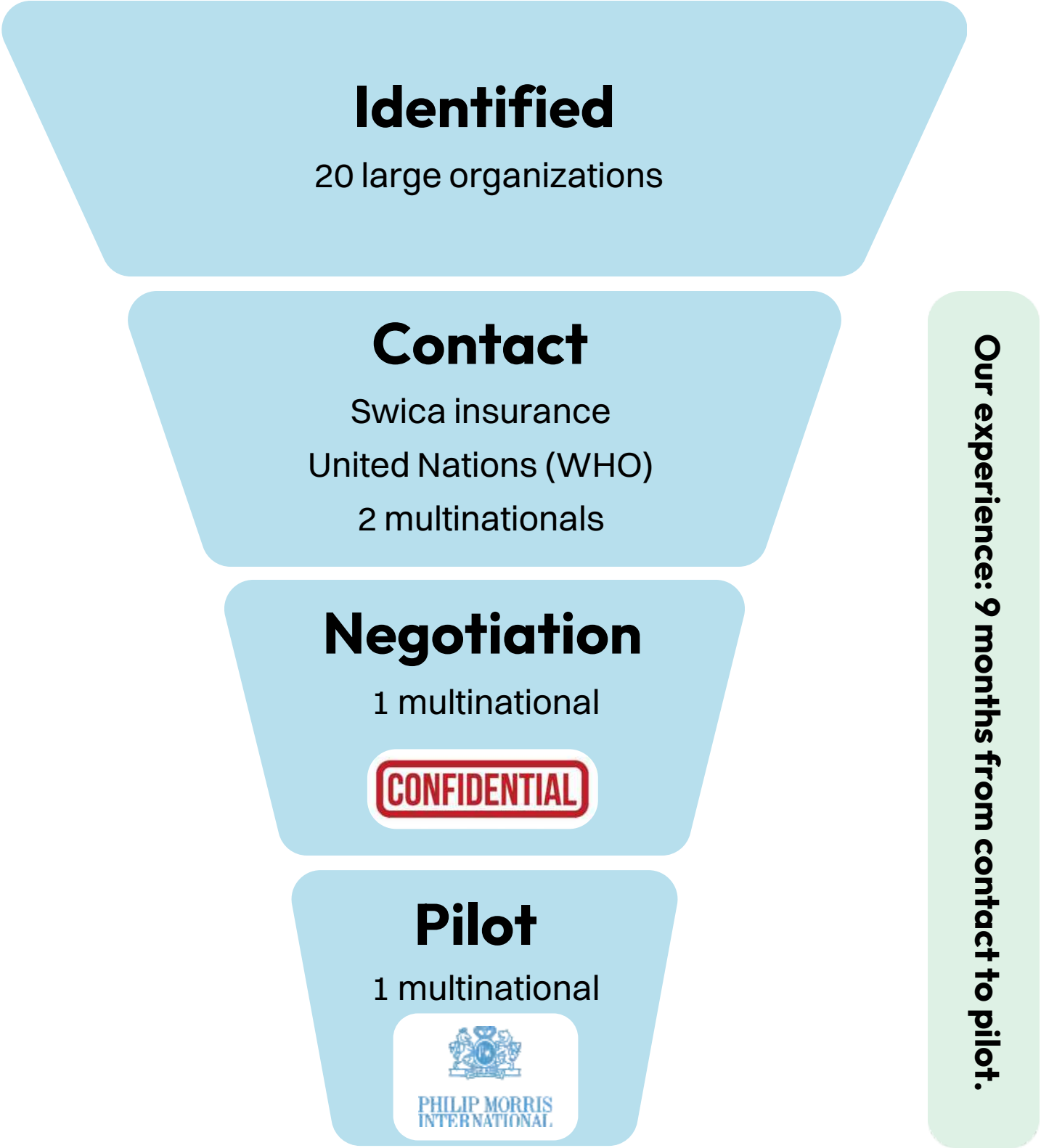
Account managers

Large organizations with over 5,000 employees get an account manager.

Partnerships with Insurers

In contact with a corporate health insurance company to gauge interest in distribution partnership.

Traction



Financial numbers in k USD (,000)

	2025	2026	2027	2028	2029	2030	Comments
Companies	2	6	12	25	50	100	From 2028: external sales partners 2 Growth levers: 1 new users, 2 new companies
Users	650	3,335	10,835	100,835	220,835	520,835	
Net sales	90	429	1,640	14,300	39,800	92,000	ABC
Gross margin	90%	90%	90%	70%	70%	70%	From 2028: 15% ext. commission
EBITDA	-431	-660	-831	1,737	7,935	21,498	
EBITDA %				12%	20%	23%	
Free Cash Flow	-444	-716	-991	-3	5,595	15,498	
Equity financing	90	3,351	2,255	2,252	7,748	23,245	Convertible loan 2025, Seed 2026
min. cFCF	-3,345	lowest cumulated FCF		July, 2028			

Team



Management



MBA
Max Grossenbacher
Co-founder & CEO, business development



B.Sc.
Vladislav Kochergin
Lead software engineer



Dr. med. FMH
Jürg Grossenbacher
MD, psychiatrist, FMH
Co-founder & chief clinical officer (CCO)



Ph.D, MBA
Peter Oeschger
Co-founder & director of the board



Advisors



Dr. med. MPH, FMH
Barbara Hochstrasser
Psychiatrist & leading expert in burnout therapy



Prof. Dr. med.
Michael Soyka
Psychiatrist & expert in medical Study design



Prof. Dr. med. FMH
Thomas Müller
Psychiatrist & clinic director
Privatlinik Meiringen



Prof. Dr.
Thomas Berger
Expert in online therapy



Ph.D
Gustavo Mendonça
Computational linguist



Innosuisse partner team

University of Applied Sciences and Arts
of Southern Switzerland

SUPSI



Ph.D.
Davide Marzorati

Institute of Digital Technologies for
Personalized Health Care (MeDiTech)

Biosignal Processing



M.Sc.
Alvise Dei Rossi

Institute of Digital Technologies for
Personalized Health Care (MeDiTech)

Data Science



M.Sc., Ph.D. student
Radoslava Svihora

Institute of Digital Technologies for
Personalized Health Care (MeDiTech)

Statistical analysis



Ph.D.
Oscar Lithgow Serrano

Dalle Molle Institute for Artificial
Intelligence (IDSIA)

Artificial Intelligence (NLP/U)



M.Sc.
Andrea Franchini

Dalle Molle Institute for Artificial
Intelligence (IDSIA)

Artificial Intelligence (NLP/U)



Lecturer-researcher B.A. computer science
Andrea Baldassari

Information systems and networking
institute (ISIN)

Lead iOS development



Senior researcher
Salvadore Vanini

Information systems and networking
institute (ISIN)

Lead Android development




M.Sc. student
Mirko Galati

Information systems and networking
institute (ISIN)

Mobile app development

Research

Innovation project supported by

 Schweizerische Eidgenossenschaft
Confédération suisse
Confederazione Svizzera
Confederaziun svizra
Swiss Confederation
Innosuisse – Swiss Innovation Agency

University of Applied Sciences and Arts of Southern Switzerland


SUPSI

 **iHomeLab**
Luxembourg University of Applied Sciences and Arts
HOCHSCHULE LUZERN
Technik & Architektur

 **SWITZERLAND INNOVATION PARK**
BIEL/BIENNE

Startup Support

Core Coaching supported by

 Schweizerische Eidgenossenschaft
Confédération suisse
Confederazione Svizzera
Confederaziun svizra
Swiss Confederation
Innosuisse – Swiss Innovation Agency

 Canton de Vaud
Office for Economic Affairs and Innovation (SPEI)

 **FIT**
fondation pour l'innovation technologique

EP FL Innovation Park

 **biopôle** **DH²**

 **Future of Health Grant**

LA FORGE
SHAPING IDEAS INTO COMPANIES

Corporates


PHILIP MORRIS INTERNATIONAL

 **CONFIDENTIAL**

 **IDI BELL**
Institut d'Investigació Biomèdica de Bellvitge


DB Systel GmbH

Clinical

 **psy-bern** Michel Gruppe 


clienia

Technology

GARMIN[®]
HEALTH

 Microsoft for Startups

 **NVIDIA[®]**
INCEPTION PROGRAM

 **aws activate**

Investment Opportunity

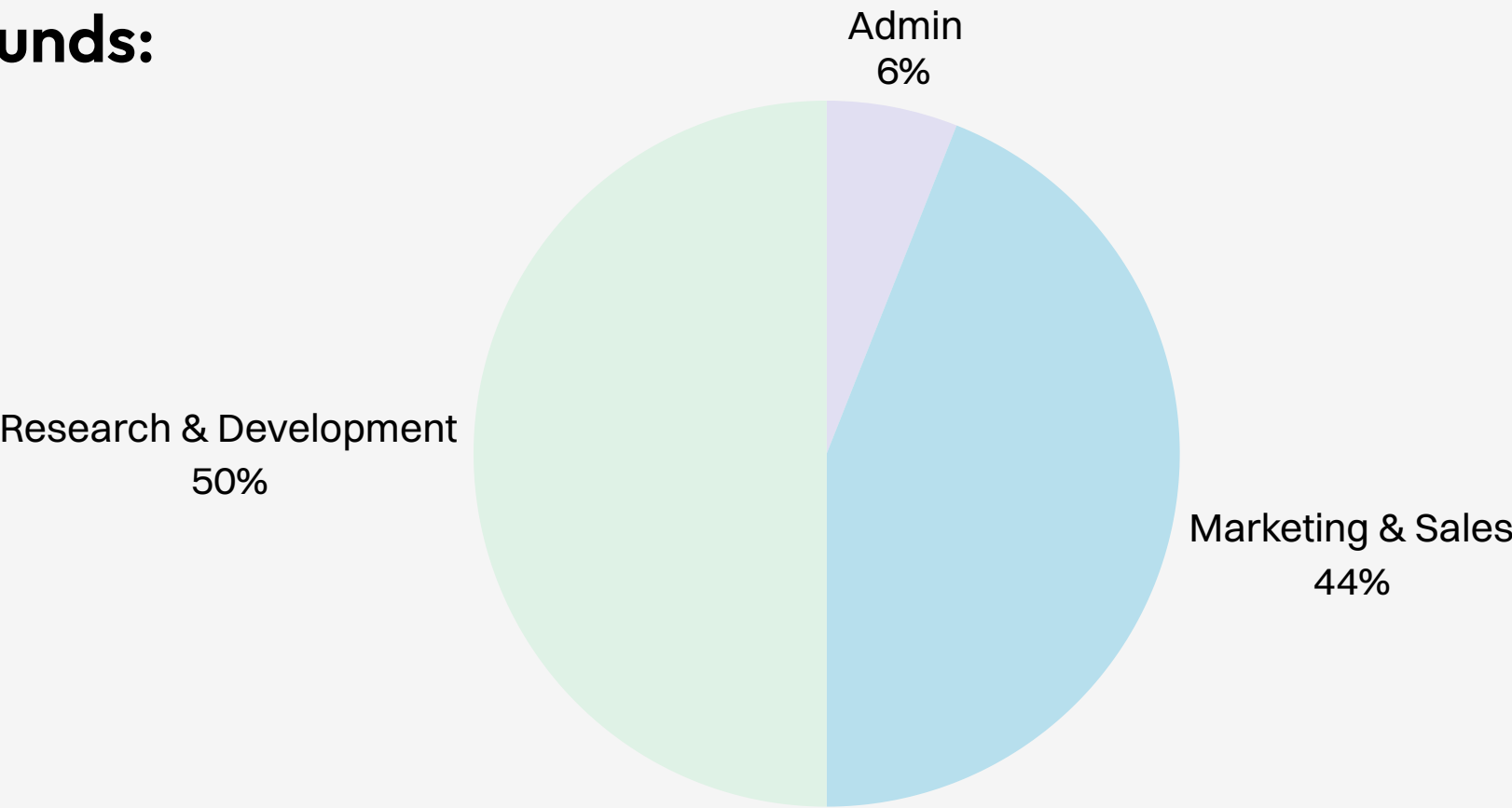
Achievements

- 1 300 PMI users
- 2 1 B2B pilot & 1 B2B pilot pending
- 3 CHF 1.7M Innosuisse project
- 4 Future of Health Grant
- 5 FIT & SPEI support

Convertible Loan Agreement: CHF 500k in Q1-2025

Milestone: Proof of customer acceptance by Q1-2026

Use of Funds:



Join us on our journey



Resilient SA

Route de Berne 109
1010 Lausanne, VD
Switzerland
<https://www.resilient.ai>

Contact us

Max Grossenbacher
Co-founder & Startup CEO
max@resilient.ai
+41 79 555 00 23

- 1 Mercer. (2024). Global Talent Trends 2024. Retrieved July 21, 2024, from <https://www.mercer.com/insights/people-strategy/future-of-work/global-talent-trends/>
- 2 Brunner, B., Igic, I., Keller, A.C. et al. Who gains the most from improving working conditions? Health-related absenteeism and presenteeism due to stress at work. Eur J Health Econ 20, 1165–1180 (2019). <https://doi.org/10.1007/s10198-019-01084-9>
- 3 Promotion Sante Swiss reported it and Daniel Angst told Max Grossenbacher during a Google Meet call on 21. August 2020 at 13:45.
- 4 Buch, S. (2019). From burnout to well-being: A focus on resilience. Clinics in Colon and Rectal Surgery, 32(6), 415-423. <https://doi.org/10.1055/s-0039-1692710>
- 5 National Center for Biotechnology Information. (2021). Measurement of human stress: A multidimensional approach. In Measurement of Human Stress and Trauma. National Institutes of Health. Retrieved from <https://www.ncbi.nlm.nih.gov/books/NBK589926/>
- 6 De Jager, F. (2024, June 6). “81+ Troubling Workplace Stress Statistics [2024 Data].” Select Software Reviews. Retrieved from <https://www.selectsoftwarereviews.com/blog/workplace-stress-statistics>