

*DIT Product*

# Applications & Roadmap

JAN 2025



# Contents

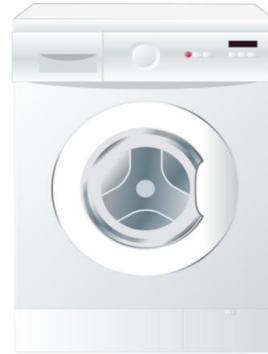
1. Home Appliance
2. HVAC
3. Factory
4. Automotive
5. Military

## Applications \_ Home Appliances

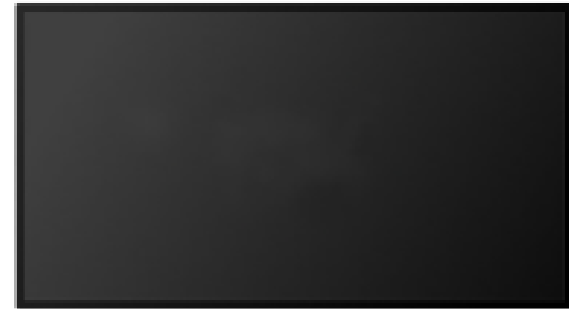
Refrigerator



Washing Machine



OLED / LCD TV



DIT Products are compatible with Global Standards and Market Competitive items



EMI Filter



Coil



Inlet/Outlet Socket

## Applications \_ HVAC

**Air Conditioner**



**Air Purifier**



**Ventilation System**



**DIT Products are compatible with Global Standards and Market Competitive items**



**PM Sensor**



**EMI Filter**



**Electric Particulate Filter**



**Coil**



**Ion Generator**

## Applications \_ Factory (Inspection / Manufacturing / Automation)

### Inspection Equipment



### Manufacturing Equipment



### Industrial Robot



DIT Products are compatible with Global Standards and Market Competitive items



AI Vision Camera



Electrostatic Discharge Control



EMI Filter



Ultrasonic Sensor

## Applications \_ Automotive (Fuel / Sensing / ADAS)

Fuel Tank



Electric Parts



Parking Assistance System



DIT Products are compatible with Global Standards and Market Competitive items



EMI Filter



Piezoceramic Component



Coil



### Applications \_ Military (SPG / Radar / Sonar / EMP)

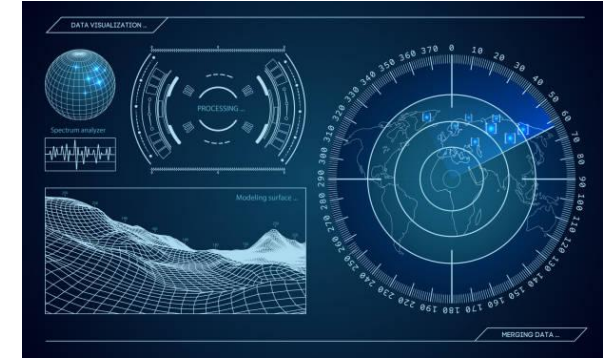
**SPG**



**Radar**



**Sonar**



**DIT Products are compatible with Global Standards and Market Competitive items**



**EMI Filter**



**Piezoceramic Component**



***Thank you !***