



Technology for a safer world

Tech integration

company with **35 years**
of experience

- ✓ Software Development
- ✓ Systems Integration
- ✓ Cybersecurity
- ✓ Innovation
- ✓ IT Infrastructure to **meet evolving challenges** in **Spain** and **beyond**

Manufacturing and
Transportation

Enterprise

Financial

Healthcare

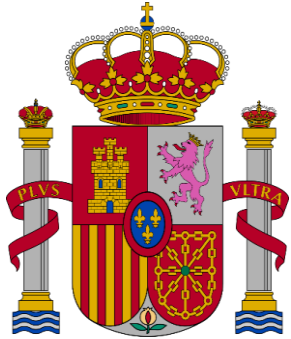
Public Administration

Defense and Security



trc

Quality and Clearance



- ✓ Government contractors with high-level clearance
- ✓ Certified Telecommunications Installer



Comunidad de Madrid

- ✓ Thermal installation and maintenance services
- ✓ Low voltage electrical installation



- ✓ CNMC Authorized Operator



UNE-EN ISO 9001
Quality Management System



UNE-EN ISO 14001
Environmental Management System



ISO/IEC 33001
System Integration & Software Development



ISO/IEC 15504
System Integration & Software Development



ISO/IEC 20000
IT Service Management System



UNE-ISO/IEC 27001
Information Security Management in the Organization



UNE-EN ISO 45001
Occupational health and safety system



HUELLA DE CARBONO
Greenhouse gas reduction



CHAMBER TRUST
Guarantee of business on the internet at an international level



Innovative company accredited by the Ministry of Economy and Competitiveness



TRC INFORMÁTICA
Managed security service for incident detection and response.



GRUPALIA INTERNET
Greenhouse gas reduction commitment

ICT



Defense



Transportation Oil & Gas Infrastructure Consumer Staples Luxury



Gov.



Health



Financial and Insurance



01

Software Development

Applications and specialized software focused on Hospital Information Systems, Financial and Management Platforms.

02

Systems Integration

Deployment and configuration of your entire network and IT resources: networking, virtualization, hyperconvergence, secure mobility, cloud environments

03

Cybersecurity

Services and solutions to enhance your organization's level of security

04

Innovation

Research, developments and innovation based on Artificial Intelligence, Artificial Vision and Radio Frequency, through machine learning and deep learning

05

IT Infrastructure

Cabling networks, Data Centers, security networks, special installations, electricity and air conditioning of technical rooms.

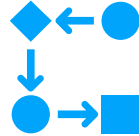
01. Software Development

Work System



Analysis

- Current situation assessment
- Definition of needs scope, reports
- Migration strategy



Design

- Prototype delivery
- Migration test
- Design
- Development and test plan



Development

- Data loading
- Collaboration environments
- Training
- Staff development



Implementation

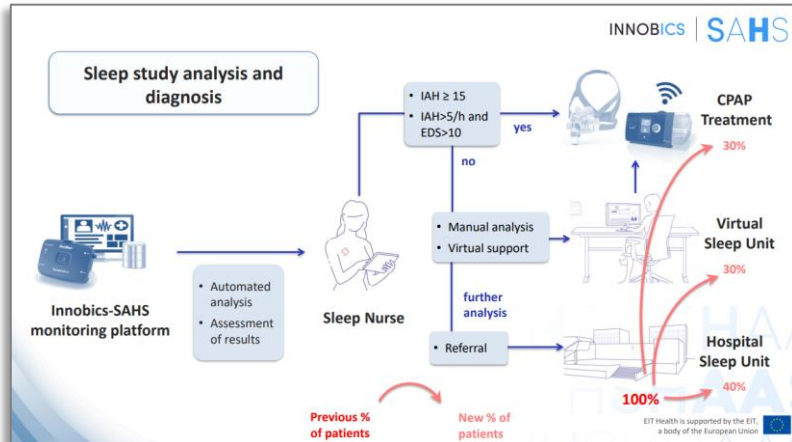
- Deployment
- Support
- Maintenance
- Incident resolution

Specialists in JAVA, .net, MIRTH integrations, SQL Server DB developments, system integration, data migrations, data analysis

Innobics SAHS



Professionals de la unitat del son, a la sala de control ICS GIRONA.



<https://innobics-sahs.eu/news/the-role-of-grupo-trc-in-the-innobics-sahs-project/>



Problem

- 90% Obstructive Sleep Apnea Syndrome underdiagnosis
- 6 to 12 months delays

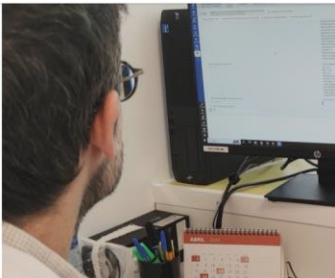
Solution

- A digital platform that provides an innovative, scalable solution for diagnosing and treating sleep apnea in hospitals and sleep units
- It efficiently manages data, devices, patients, institutions, and healthcare professionals

Innobics SAHS



[Project URL here](#)



22/05/2024

More than 3,000 people have benefited from the new healthcare process for obstructive sleep apnea in Girona and Lisbon

[+INFO](#)



29/04/2024

INNOBICS-SAHS appears in a virtual dissemination game

The INNOBICS-SAHS project takes center stage in one of the five films proposed by the research center to make its biomedical research understandable and engaging.

[+INFO](#)



18/03/2024

The Portuguese public TV broadcasts a report on INNOBICS-SAHS

[+INFO](#)



07/10/2024

INNOBICS-SAHS results presented at two European congresses

[+INFO](#)



19/07/2024

How does the polygraph work to detect obstructive sleep apnoea?

[+INFO](#)



26/06/2024

How does the process to detect sleep apnea begin in primary care?

[+INFO](#)

RetinaReadRisk



Problem

Waiting time in public healthcare systems, and lack of **early** detection in working adults

Solution

- RRR orchestrates AI models 5G technology, and smartphones equipped to capture retinal images in local medical offices via a single ICT platform
- Deep learning models automatically analyze them to predict the risk of developing DR



RetinaReadRisk



Globally, DR is the fifth cause of blindness and visual impairment affecting between 3-4% of people in Europe. DR affects 30% of people with diabetes and it is estimated that 280 million people have lost their sight due to diabetes worldwide.



When detected on time, the risk of DR can be reduced by 95% but the disease is asymptomatic in its early stages and the risk of developing DR varies among patients.



DR can be prevented by controlling risk factors, such as glycemia or arterial hypertension. But existing healthcare systems are inefficient in detecting DR for several reasons as short supply of cameras or the fact that 29% of Europeans live outside urban areas, where ophthalmologist units are not located.

[Project URL here](#)



RETINA READ RISK – October 2024. A look at diabetes beyond the disease

octubre 10, 2024

About Retina Read Risk Through the testimony of Òscar Luri, who has suffered from diabetes for 40 years, we explain how the innovative technology developed thanks to the collaboration of researchers from the Pere Virgili Health Research Institute (IISPV), the Sant Joan University Hospital in Reus and the Rovira i Virgili University (URV) has significantly ...

[Read more →](#)

RetinaReadRisk: A look at diabetes beyond the disease

- Through the testimony of Òscar Luri, who has suffered from diabetes for 40 years, we explain how the innovative technology developed thanks to the collaboration of researchers from the Pere Virgili Health Research Institute (IISPV), the Sant Joan University Hospital in Reus and the Rovira i Virgili University (URV) has significantly improved the prevention and treatment of the disease and its complications, such as diabetic retinopathy.



Òscar Luri, at the center of the image.



Doctoris



- **Hospital Management Software** | Where all systems converge on a single web platform
- Based on hospital systems data protocols and standards such as: HL7 v2.x, HL7 v3 / CDA, XML, DICOM

- **Doctoris HIS.** Hospital Information System
- **Doctoris HCE.** Electronic Medical Record
- **Patient Portal**
- **Patient portal. APP**
- **+Signature.** Informed consent
- **e-Oncology.** Oncology Pharmacy
- **Private electronic prescription**
- **GDM.** Digital medication management
- **Specialized module in ICU**
- **Queue.** Waiting room management

Features



Multi-platform development
Multi-hospital, multi-language
and multi-platform



Secure environment
Information exchange with
other devices under a
proprietary security protocol



Full mobility
Free operating system. Access
from anywhere



Integration capability
Compatible with external
management supports



Cloud Ready Java
Data hosted in virtualized
storage spaces



Scalable and **modular**
From a consultation to an
entire hospital network



Specialized software
Designed and supervised by
medical team



Data **confidentiality**
guaranteed

Doctoris HCE

ELECTRONIC MEDICAL RECORD

ICU

RECORDING AND VISUALIZATION
OF ICU CONSTANTS

Doctoris HIS

HOSPITAL INFORMATION SYSTEM

Doctoris HIS

- Admission Management.
- Medical consultations
- Diagnostic imaging consultations
- Pharmacy
- Allocation of expenses/services
- Billing, documentation and archiving
- Operating room management
- Other resources (ambulances, diets, users...)
- Digital Medication Management
- Programmed admissions

Doctoris HCE

- Administration
- Blood Bank
- Classification of complementary tests
- Medical Address
- Doctors / Nursing / ICU / Radiology
- Deliver reports
- PACS.
- Laboratory
- Peripherals Nursing
- Research Permit / TER

ICU

- Treatment prescriptions
- Vital signs tracking, monitoring and alerts
- Specific nursing care module

Doctoris



eOncology



COMPREHENSIVE INFORMATION SYSTEM IN
ONCOHEMATOLOGY

Electronic signature

INFORMED CONSENT



Patient App

USER MANAGEMENT



Modules and Features

Electronic signature

- Forms associated with admission. This process must be completed before the start of an intervention
- Introduction of signatory(s) in case of several controllers
- Ability to edit parts of the document on the fly
- Sending information to a device with the App installed and associated with a specific ID
- Tools that make it easy to read (Zoom, font size, etc.)
- Document management with integrated signatures

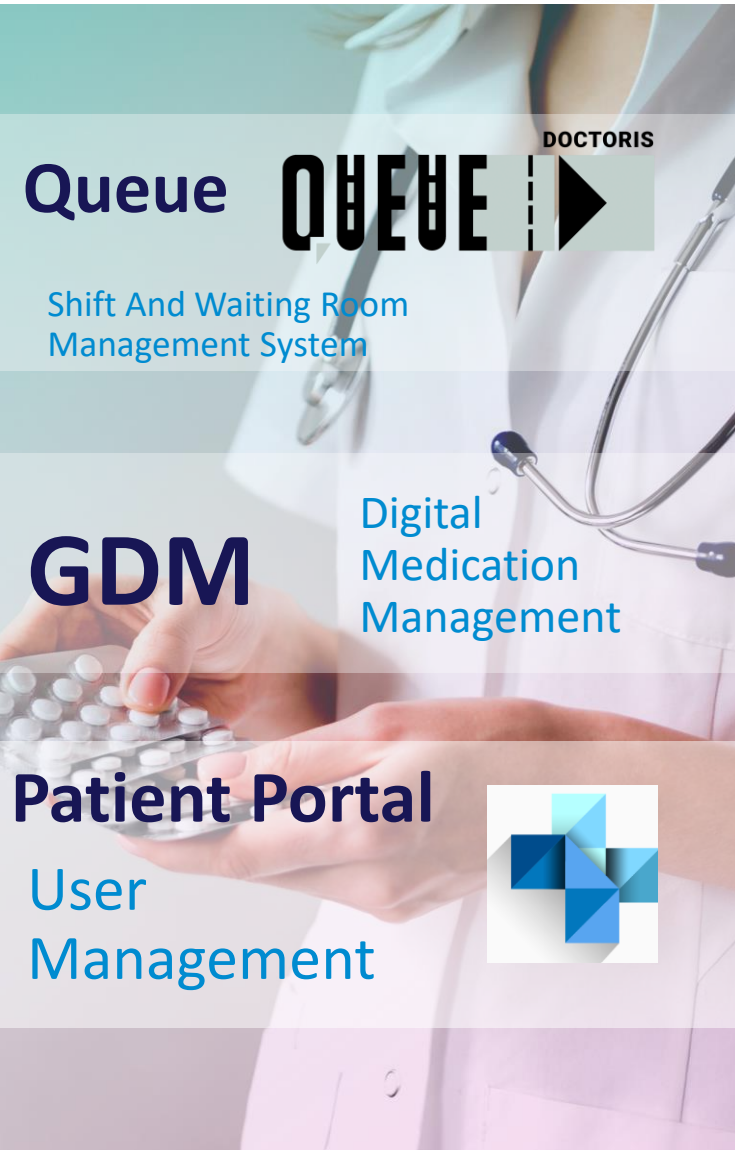
eOncology

- Diagnosis of tumors
- Diagnostic tests
- Extension and staging study
- Management of therapeutic strategies and treatments
- Prescription of antineoplastic treatment
- Pharmaceutical validation
- Assisted treatment preparation with integrated quality control
- Safe treatment delivery
- Clinical evolution and dynamic evaluation of response to treatments
- Information analysis, dashboard, machine learning

Patient App

- Request and schedule appointments
- Agenda management
- Notification of arrival at the hospital (geopositioning or codes at the door)
- Consultation and download of clinical results
- Instant information on emergency wait times
- Synchronization with calendar
- Beneficiary management
- Viewing and consulting the medical chart
- Video consultation module

Modules and Features



GDM

Assisted Electronic Prescription

- Direct connection with EHR (Electronic Health Records)
- Help fields as decision support

Pharmaceutical validation

- Online access to prescriptions for pharmacy professionals, requiring validation for the dispensing of prescribed medication

Digital nursing

- Digital optimization of the medication administration process
- Management, recording, and signing of administration through a mobile app

Patient Portal

- User Management
- Management of associated family members and beneficiaries
- Request appointments. Scheduled
- Appointment management
- Download results and reports of tests performed. Includes radiology
- Proof of attendance

Queue

- Database interoperability and data management
- Integration with external HIS
- Visualization of workflow at the counter
- Display coordination on screens and other devices
- Multi-platform system with support for touch devices



ONLINE COMMERCIAL
MANAGEMENT SYSTEM

- ✓ Centralized **control** of business operations and resources
- ✓ tasks **optimization** and **automation**
- ✓ Combines **ERP**, **CRM**, and **Help Desk** features
- ✓ 100% **proprietary** application
→ development of **custom modules** and integration with external systems for data transfer and reception
- ✓ Desktop version and cloud app in its SGCloud version

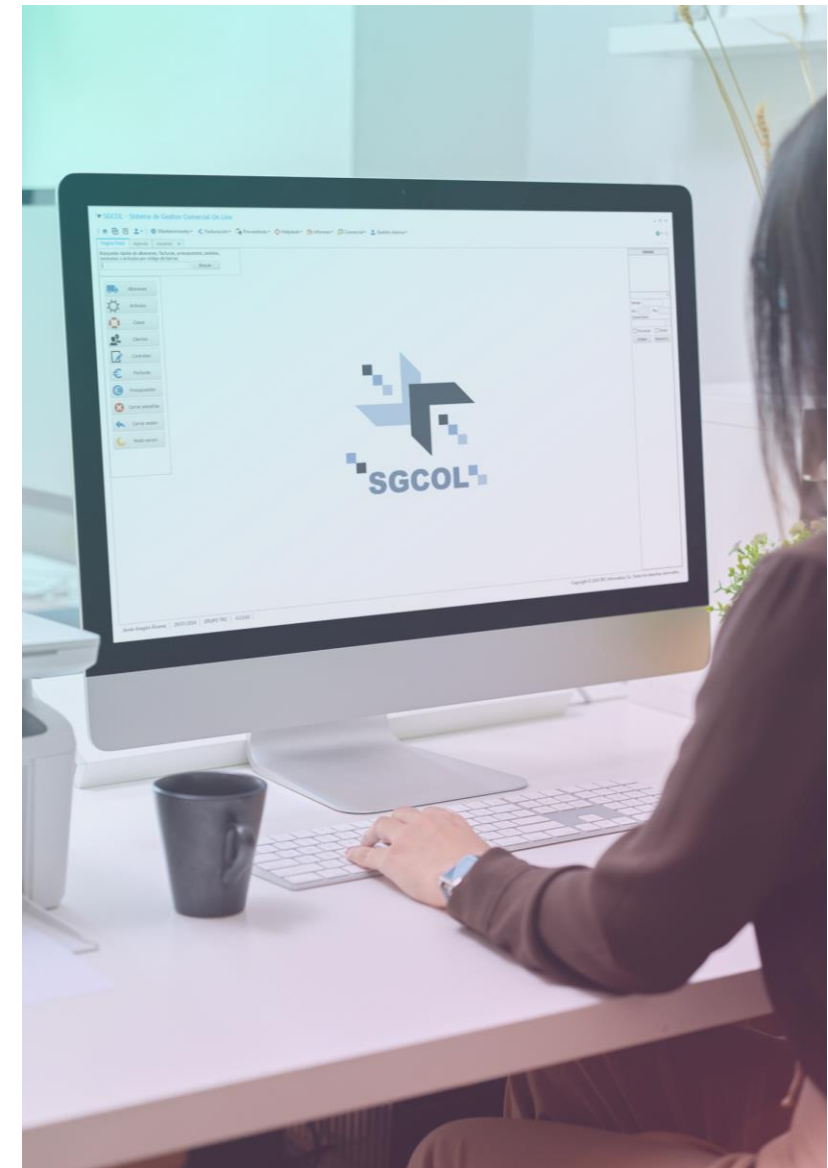
Modules and Features

Work information and client data management

- Reflection of orders, payments, and returns
- Maintenance of items
- Management of delivery notes, contracts, and invoices
- Management of user's work information
- Management of warehouses and resources
- Ticketing (text)

Tracking

- Generation of reports according to the parameters set in the system
- Analysis of billing, sales, orders, unpaid invoices, etc.
- Organization of the schedule



Cobra2

LOAN AND DEBT PORTFOLIO PLATFORM

- ✓ **Complete solution for the management, control, and tracking of loan and debt portfolios for a financial institution**
- ✓ **Modular solution consisting of different applications based on:**
 - **Loan type** (mortgages, personal loans, auto loans, and consumer loans)
 - **Functionality** (application, collection, recovery, bad debt, litigation, and adjudications)

Modules and Features

- Status of requests, including analysis, payments to be made, expenses, etc.
- List of transactions and financed assets
- Litigation management module
- Documentation associated with the client and case, along with traceability and record of annotations
- Generation of files in SEPA format
- Integrated Contact Center module
- List of approval processes
- Payment plans, status, and automation
- Historical movements. Risk analysis
- Querying databases to generate reports
- Product workshop, including creation of simulations and viability analysis



02. Systems Integration

Boost productivity and streamline business processes

Cloud Storage

Reliable, Scalable | Readily available

- 8x5 or 24x7 models
- Maintenance, operation and monitoring
- **Customizable** SLAs according to needs
- Integration of physical, equipment and software applications
- **Scalable** architecture



Virtualization

Virtualize services, machines, and work environments with full workstation features



Backup Solutions

Install and manage backup solutions for data recovery



Hyperconverged Structures

Deploy platforms and migrate data and machines in hyperconverged environments to simplify resource management



VDI (Virtual Desktop Infrastructure)

Customize virtual desktops with centralized management flexibility



Unified Communications

Custom professional solutions: IP telephony, call centers, and video conferencing integration



Storage Systems

Integrate and install high-performance storage systems



Bare Metal Servers

Install high-performance servers to optimize data management



IT Support

Issue resolution, technical support, and technology installation and configuration



Mail / DNS

Integrate mail and DNS applications for efficient, intuitive experiences



Authentication Applications

Integrate authentication, identity, and document protection applications

Networking Wi-Fi and Perimeter Security

Site Acceptance Testing Service

- **Deploy** network resources for all needs
- **Configure** and **secure** LAN and WAN networks to protect your assets
- **Manage, support,** and **maintain** IT systems to handle daily incidents and requirements
- Our highly qualified teams **monitor** your systems and respond quickly to incidents, ensuring process continuity



Switching. Routing

Access networks, data centers, WAN connectivity, and network auditing and consulting services



WIFI

Deploy WiFi networks, integrate with wired networks, and conduct coverage studies



Firewall

Implement, operate, and migrate firewalls



Monitoring

24x7 monitoring services for organizations with their own technical teams



NAC (Network Access Control)

Implement network access control systems



Load Balancing

LAN and WAN load balancing solutions



SASE (Secure Access Service Edge)

Cloud Access Security Broker (CASB), FWaaS, and Zero Trust, ensuring secure access to platforms



Support

Handle incidents and requests via email, phone, and SGCOL, with escalation to higher technical levels



24x7 Service

24/7 incident management carried out by experts



Remote Hands Service

Manage Data Center equipment: server reboots, cable changes, and basic installations



Remote Operations

Execute procedures remotely to reduce escalations and response times for failures



SD-WAN Networks

Integrate software defined wide area network SD-WAN technologies, consulting, and solution analysis

03. Cybeseecurity



Cyberlab

Work areas



Technology Assessment

- **World-class** cybersecurity technology
- benchmarking for thoughtful hardware, software, best practices integration



Integration of previously-weighted solutions

- **Pre-tested** solutions in our cyberlab to devise specialized cyber defense pathways



Disruptive Technologies Identification

- Deep knowledge of client technologies for **objective evaluation**
- Strong collaboration with manufacturers
- Selecting the best solutions
- Fostering trust between integrator and client

Vulnerability Identification and Management

Endpoint/extended detection and response **EDR/XDR systems**

- **Defense** against behavior-based and Zero Day attacks
- Technology to **distinguish** legitimate from malicious behavior
- Comprehensive **monitoring** and defense for systems and users
- Continuous **identification** and resolution of IT vulnerabilities

Work areas



Identification

- Information system **asset inventory** for potential vulnerabilities



Categorization and prioritization

- Classify vulnerabilities based on detected **Common Vulnerabilities and Exposures (CVEs)**
- Prioritize **criticality** through AI-based models



Analysis and notification

- Analyze vulnerabilities
- Contextualize AI-generated priorities
- Document notifications with asset details and mitigation measures



Verification and registration

- Make sure the vulnerability is no longer detected



Immediate alerts and system status

Comprehensive evaluation of all system telemetry, behaviors, and misconfigurations

- Reporting on the **platform health** and performance



Managed Monitoring Service

- Threat **Detection**: Continuous monitoring
- Platform **Maintenance**: Optimize and update security platforms for peak performance
- Threat **Analysis** in containers and virtual systems
- Seamless Firewall **Integration**
- Device **Control**: Manage devices and align with your security policies, maintaining your sensitive data safe



In-depth Identity Defense

Automated Security Operations Center SOC

- **Problem:** Identity-based attacks are a major challenge in corporate cybersecurity
- **Solution:** Technology that differentiates between legitimate users and cybercriminals with stolen credentials

Work areas



Deployment and Implementation Service
Evaluate the client's ecosystem, identify vulnerabilities, deploy agents, and configure the platform



Our services are **API-FIRST**
Next-gen cybersecurity technologies with an 'open' design for **easier interoperability** and reduced complexity. **Advantages**

- Faster threat response
- **Reduced** manual errors
- Lower operational costs



Regulatory Compliance
Compliance with National Cybersecurity Scheme, ISO 27001, and NIST standards



- Active Directory Risk Analysis**
- Analyze all AD entities and the risk framework
 - Identification of potential attack vectors
 - Continuously **monitor** AD security
 - **Define** access policies based on activity, behavior, and risk
 - Configure response actions and **automate** playbooks
 - **Threat Hunting** and **Proactive search**



- Virtual Analyst Role**
- Use AI and machine learning for 24/7 monitoring
 - **Accurate** threat detection with reduced false positives



Risk Analysis
MAGERIT methodology using Pillar/micro-Pillar tools as needed

Strategic vendors and Alliances

- Solutions to protect and safeguard your information, data, networks, and assets
- Hand in hand with leading cybersecurity vendors



Vulnerability management

Forcepoint

DLP, CASB

Recorded Future

Intelligence: Brand Protection, Threats, Vulnerabilities, Credential Recovery.

ARMIS

Intelligent visibility IT, OT, IoT, IoMT, etc.

CHECK POINT

Harmony Mobile

proofpoint

Email Protection, PSAT (Phishing Awareness and Simulation)

Talkwalker

Social media monitoring

cyberbit

Advanced training, training work teams



TTXs (cybersecurity incident simulation exercises)

XM Cyber

Cyber risks

ZIMPERIUM

Mobile EDR

netskope

DLP, CASB

CROWDSTRIKE

Falcon Platform: EDR (Fixed & Mobile), ITP (Identity), XDR (Threat Intelligence) Logscale (Log Management) Surface (Sup. Exhibition)

Counter Craft

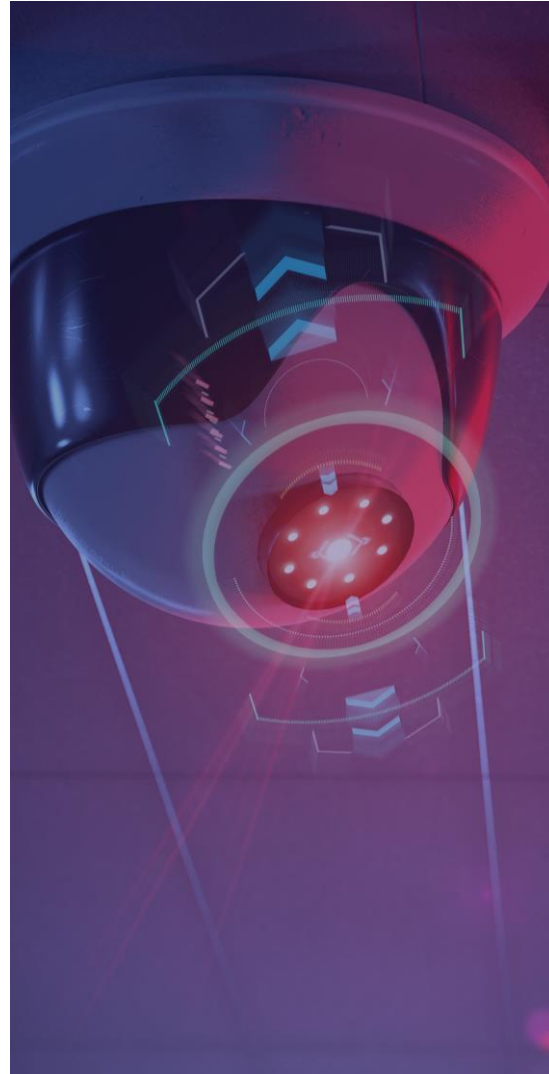
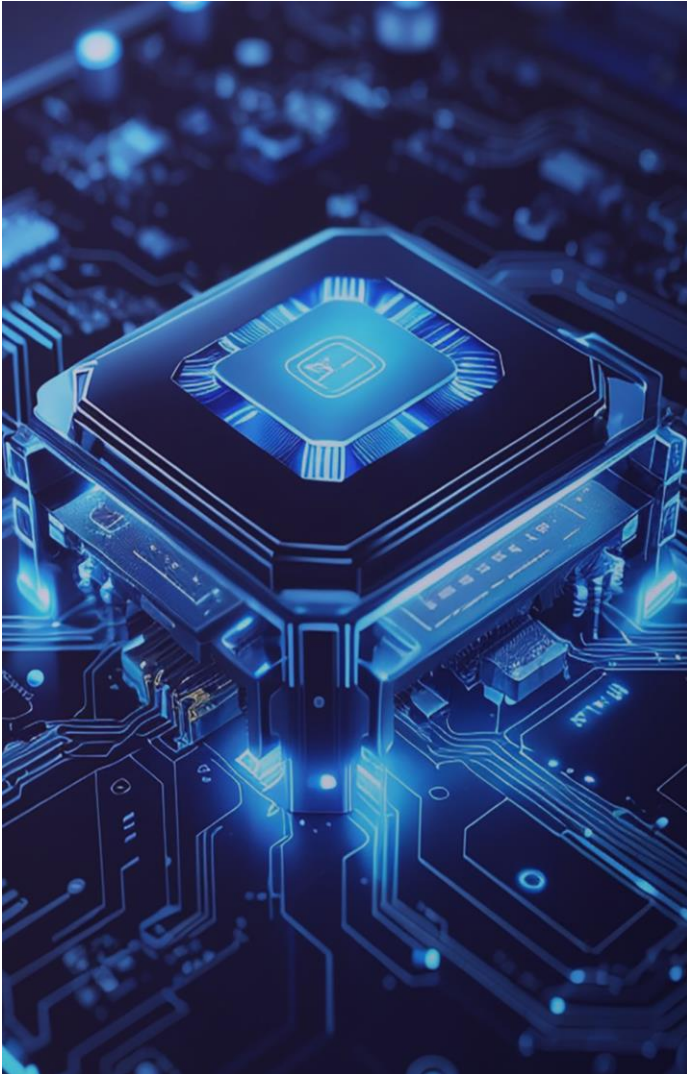
Cyberdeception

paloalto NETWORKS

Cortex Platform: XDR, Xpanse (exhibition surface), XSOAR (orchestration, automation and response), Zingbox (IoT), Prisma Cloud (CNAPP).

04. Innovation

Research and Technology Development



Capture elements

Deployment and coordination of devices that allow field data to be obtained.



Data collection

Technologies that enable data transfer as well as support for data storage and computing.



Artificial intelligence

The algorithms that process the stored data:

Transform that data into knowledge.

Do it automatically.

Facilitate the decision making of the end user.



User Interface

Platforms to present the extracted knowledge to the end user in a simple and useful way and facilitate the execution of the decisions made.

Research and Technology Development

Deploy and coordinate devices for field data collection



Marking and Asset Control

Use of RFID beacons: active, passive, GPS



IoT Sensors

Implementation of devices capable of detecting presence, noise, gunshots, temperature, humidity, CO2, wind direction and speed, water quality parameters (pH, turbidity, suspended solids), presence of chemicals, etc.



Fixed and mobile cameras

Integrate and design antennas to monitor the radio interface and detect objects by their spectrogram



ISMI-Catcher

Mobile device identification



RF Detectors

Empleo y coordinación de dispositivos RGB, térmicas, fotogramétrica, LIDAR, hiperspectral...



Machine Learning

Natural Language Processing
(NLP)

Frequency analysis **spectrum**

**Biometric
recognition**

**Computer
vision**

Applications

Anti-Drone turnkey solution

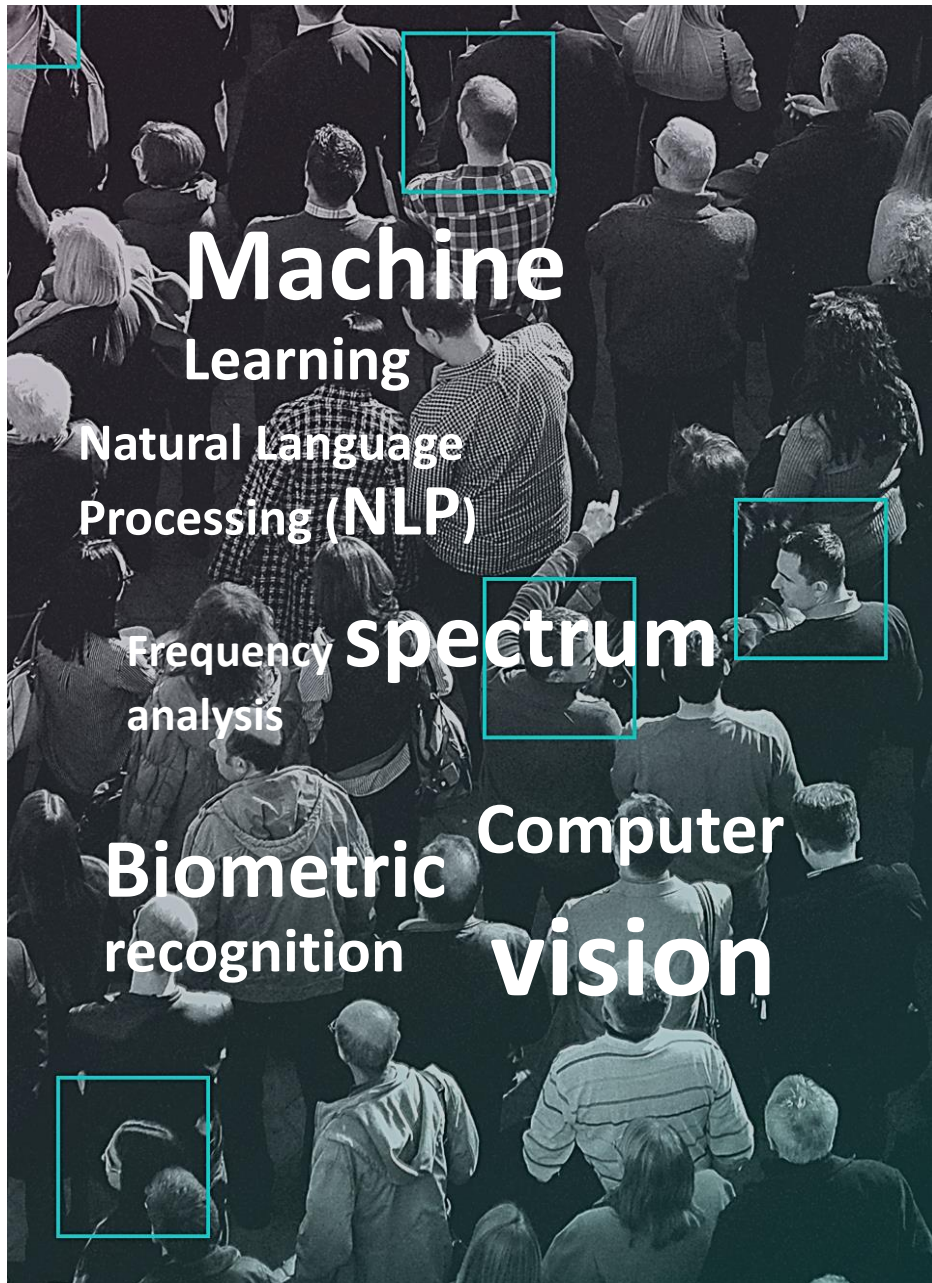
- Radiofrequency detection, 3D radar, electro-optical sensors, target localization/tracking, jamming (Softkill), neutralization (Hardkill), intelligent report generation, and implementation in static solutions or vehicles

Edge control environments

Detect illegal crops, hunting, contaminants in aquifers, and illegal irrigation | Prevent forest fires | Provide land coverage and support | Control borders | Track vehicles. Combat illegal marijuana trafficking

Automated recognition

- **Hyperspectral image processing.** Identify suspects (facial/voice recognition). Control borders, perimeters, and access.
- **Track** individuals by specific traits. Manage crowds: capacity, anomalies, and restricted areas
- **Authenticate** logins. Identify vulnerability states (sadness, depression)



Applications

Automated recognition

- Combat illegal marijuana trafficking.
- Detect soil/water contamination, poaching, fire causes, fire risks/accelerants, gunshots, and abnormal water/air quality.
- Implement anti-drone systems

Early detection and prevention

- Prevent gender/racism crimes and crimes at large events. Prevent risk situations (depression, suicide). Use smart answering machines for appointment management, diet logging, medication reminders, and conversational summaries

Data correlation, pattern finding, and prediction models

- Detect anomalous patterns in vehicles/individuals, fire risk factors, and environmental crime risks. Predict risk movements at large events. Correlate data to detect drones in critical infrastructure

Healthcare Applications

IoT Device Data Analysis

- Enhanced **Patient Monitoring** and **Predictive Care**: IoT devices collect real-time patient data, enabling remote vital sign monitoring
- Operational **Efficiency** and **Cost Reduction**: IoT analytics streamline operations, optimize equipment use, and reduce **wait times**

GBR-thermal image processing
BR by voice: voice file processing

- **Early Detection**: Thermal imaging detects abnormal temperature patterns for early, non-invasive diagnosis and timely intervention
- **Patient Safety**: Computer vision tracks movement and analyzes speech to detect distress or neurological issues, improving safety
- **Workflow Efficiency**: Automated image and voice analysis reduces workloads, accelerates diagnosis, and improves care focus

Frequency Spectrum Analysis

Processing radio interface signals
Hyperspectral image processing

Biometric Recognition

Facial and Body BR: BR Image Processing

- **Secure Identification**: Biometrics ensure accurate patient ID, reducing errors and streamlining check-ins
- **Personalized Care**: Facial and body recognition tracks interactions, monitors treatment compliance, and customizes care plans
- **Access Control**: Biometric systems **secure** access to sensitive areas and data, enhancing protection and regulatory **compliance**

Machine Learning

Data correlation | pattern finding | prediction models

- **Predictive** Diagnostics: Predict health issues early, enabling preventive care
- **Personalized** Care: Identify patterns in patient data and treatment outcomes for Bespoke treatments
- Resource **Optimization**: Improve resource allocation by forecasting admissions, equipment use, and staffing
- Faster **Drug Discovery**: Accelerate drug discovery by finding molecular data correlations and predicting drug **efficacy**
- **Decision** Support: Data-based recommendations to enhance diagnostic accuracy and reduce error

Natural Language Processing

Language interpretation | processing

- Automated Documentation: Convert physician notes into **structured records**, reducing admin work and improving **accuracy**
- Patient Interaction: **Enable** chatbots to handle patient queries 24/7, enhancing engagement and reducing staff workload
- Predictive Insights: Provide insights on **disease** patterns, **treatment** outcomes, and risks for better decisions.
- Health Trend Monitoring: Identify headwinds and opportunities from your data, enabling proactive care **adjustments**

R+D+i Success Stories

Utilizing data capture, big data storage, and AI-driven interpretation systems, with centralized control and monitoring to manage alerts



CANTIMA Project | CIVIL GUARD

Resource enhancement system

- Innovative technologies for rural crime prevention, detection, and response
- Asset control and theft tracking, including license plates, beacons, biometrics processing
- Event security and access control
- Marijuana cultivation detection
- Environmental crime prevention

CERVUS Project | ARMY

Airspace perimeter protection system

- Identifies and neutralizes unmanned aerial vehicle threats
- Integrates RF analysis, optical sensors, and radar
- Uses AI algorithms for threat assessment
- Capable of disrupting or neutralizing detected threats

05. IT Infrastructure

IT Infrastructure

- Maximum **security** and **efficiency** in telecom network deployment and management
- Proper **design** and **planning** to ensure readiness for evolution and scaling
- **Integration** of new technologies and applications

Security Networks

Audiovisual

Data Center

Structured Cabling

Perimeter Security

IT Facilities

Work areas

High - performance network infrastructure

- Easy management
- Maximum speed
- Meets digital environment demands
- Optimized for data traffic and security



Structured Cabling System

Streamlined and intuitive cable network



Data Center

Centralized ITC infrastructure management



Security Systems

Perimeter security network deployment and support



Audiovisual

Video-wall systems installation and service



Maintenance

Infrastructure monitoring and 24/7 technical support



Engineering

Development and implementation of turnkey network infrastructures. Documentation management



Installation

A large team of specialized installers certified by leading manufacturers



Certification

Ensuring compliance with official standards and regulations in all our installations



Engineering

Comprehensive infrastructure design and documentation



Installation

Turnkey solution orchestrating hardware, software, labor, and planning



Technical cleaning

Specialized Data Center maintenance for optimal performance



Maintenance

Continuous resource management. 24x7 remote monitoring

Data Centers



Audit

Specialized Data Center maintenance for optimal performance



Commissioning

Review, adjustment and assurance of all processes and systems



Monitoring

Continuous system operation monitoring



Critical transfer

Infrastructure relocation planning and analysis

Critical Facilities



Patient-Nurse Communication System

VoIP solution compatible with IP and analog systems. A button triggers a real-time alarm, instantly alerting the control station for emergency response management



Building Management Systems

Ensure proper operation, regulate HVAC and utilities, and monitor alarms or incidents in real-time. It also integrates with third-party solutions



IP Television Systems

Manage TV channels or advertising signals with a versatile, fast, and simple cabling infrastructure



Access control and work presence identification

Access control terminals enable quick, easy management of workers' entry and exit times through customizable modules



Parking guidance and Control Systems

Including information panels, guidance lights, and parking detectors



Physical Security Information Management

Unified integration of access control, CCTV, intrusion detection, intercom, public address, and telephony

Audiovisual



Videowall

Design, install, and commission infrastructures. Integrate applications and management tools. Install video walls for control rooms, monitoring, information panels, and commercial spaces



Digital Signage

Deploy totems, showcases, and screens (interior and exterior) integrated with centralized content management software for impactful, dynamic advertising and customer interaction

App. Digital Signage (outdoor-indoor) Interactive digital signage



Crisis Rooms

Crisis rooms equipped for communication, coordination, and decision-making during emergencies



Video conferencing rooms

Setup and commission immersive rooms with high-end equipment for top-quality interactive video communication and optimal room coverage

[Press Rooms / Auditoriums App](#)



Control Centers

Design and implement intuitive control systems using open-source software and integrated web servers, including controllers, PA systems, lighting, and screens. Manage and configure integrated devices and interfaces

[App. Simultaneous translation rooms. Inductive loop](#)

Solutions

Precision air conditioning

Design, install, operate, and maintain systems for technical rooms and industrial facilities

- Industrial Equipment
- Water Chillers and Condensers
- Hydraulic Network, Piping, and Pumps
- Terminal Units: CRAC, CRAH, InRow (Data Centers)
- Monitoring

Electrical installations

Comprehensive IT electrical infrastructure

- Low/medium voltage connections
- Power backup (UPS, generators, batteries)
- Capacitors and protection panels
- Electrical distribution and lighting
- Industrial assemblies
- Monitoring systems



CCTV

Intelligent video surveillance systems for monitoring your environments and activities. Thermal cameras



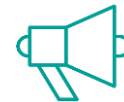
Access Control

Immediate detection and alerting of interior, exterior, and perimeter incidents to identify vulnerabilities



Perimeter Protection

Identity verification. Effective monitoring of access to your facilities. Temperature detection and monitoring



Public Address System

Implementation of systems for broadcasting audio messages for location, information, and evacuation

Key vendors





Contact

Contact

Direct email to our
Innovation team:



proyectoinnovacion@grupotrc.com

TRC. headquarters

c/ Albasanz 25, 28037. Madrid

Tlf. 91 267 01 00

email. grupotrc@grupotrc.com

www.trc.es



Aitäh | Ačiū | Blagodarya | Dank u | Danke | Děkuji |
Efcharistó | Go raibh maith agat | Grazie | Grazzi |
Gracias | Hvala | Kiitos | Köszönöm | Merci |
Mulțumesc | Obrigada/Obrigado | Paldies | Tak |
Tack | Ďakujem

Thanks!