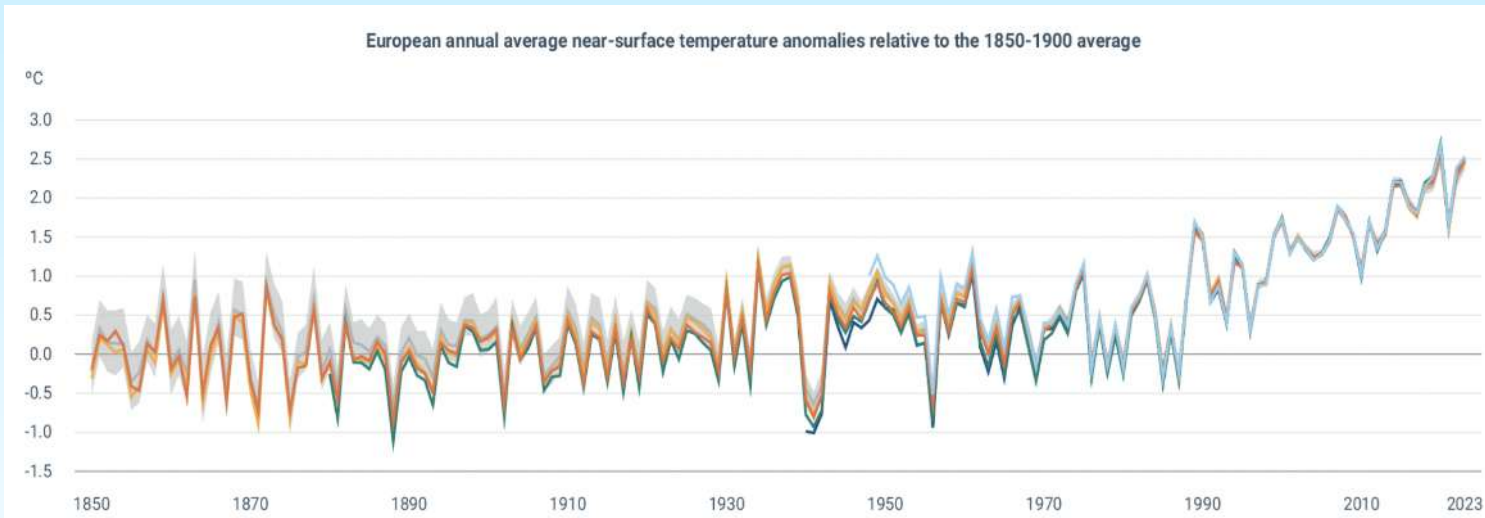


EMPOWERING YOUR HOSPITAL'S RESILIENT AND SUSTAINABLE FUTURE

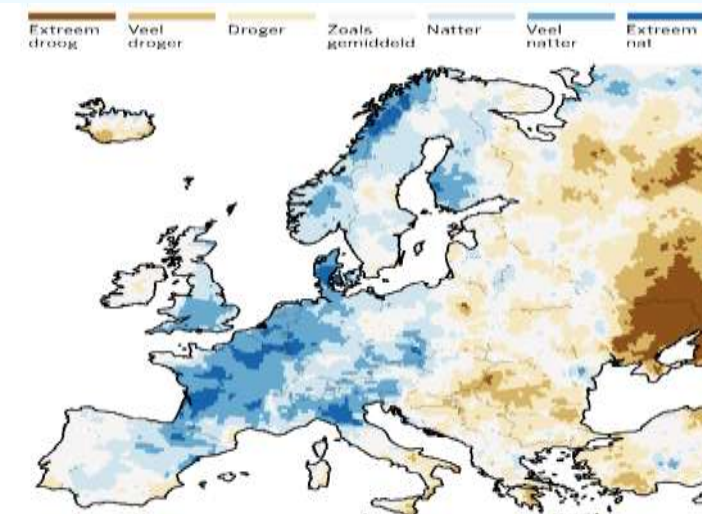
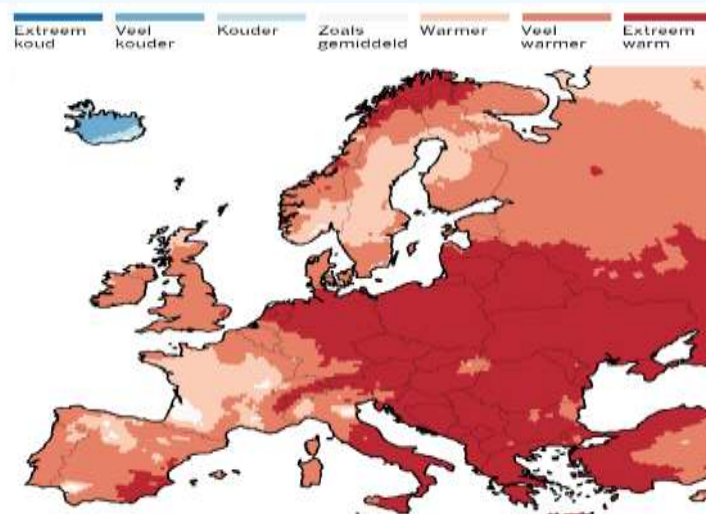


NZHI
Net Zero Healthcare Impact

Europa under pressure



Europe has already warmed by **2.5°C** since 1980
(global: +1.5°C)



Belgium is becoming warmer and wetter.



NZHI
Net Zero Healthcare Impact

Climate change is harming Europeans' health



Vector-borne
disease spread



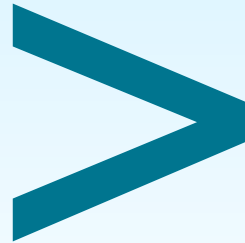
Heat-related mortality
and morbidity



Natural disasters



Healthcare emits more CO₂ than aviation



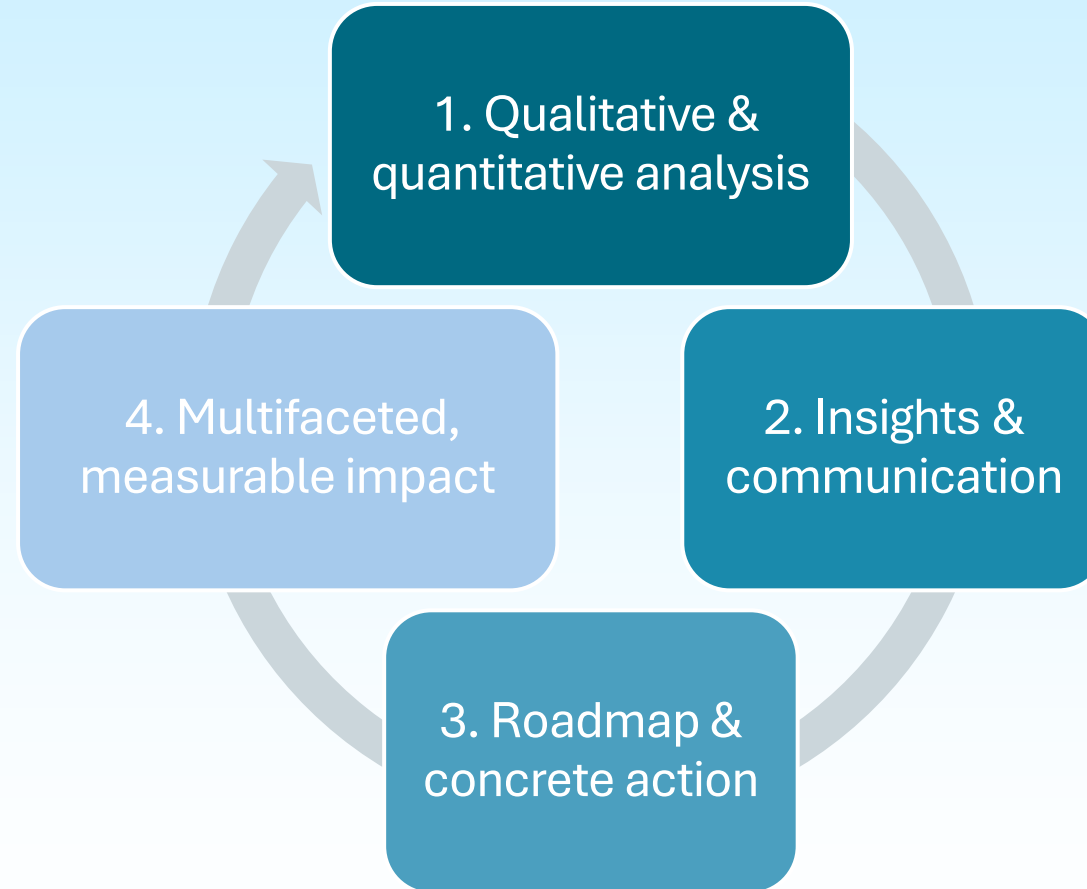


NZHI

Net Zero Healthcare Impact

***Your ambitious
hospital partner on
the path to Net Zero***

Our approach



From Data to Insight

1. Map your entire hospital across 10 domains: gather data on procurement, consumption, and waste
2. Calculate environmental impact down to the product level using scientific, evidence-based data
3. Engage with frontline clinicians to gain deeper insight into real-world processes





Medical equipment

Time to shift towards circularity.



Waste

Generate less and sort more.



Pharma

Go green, reduce waste water toxicity.



Chemicals

Protect, control, substitute, eliminate.



Transport

Go electric with less cars.



Food

Change the offer, spill less.



Energy

Reduce and go renewable.



Water

Clean, capture, reuse.



Building

Think forward.



External services

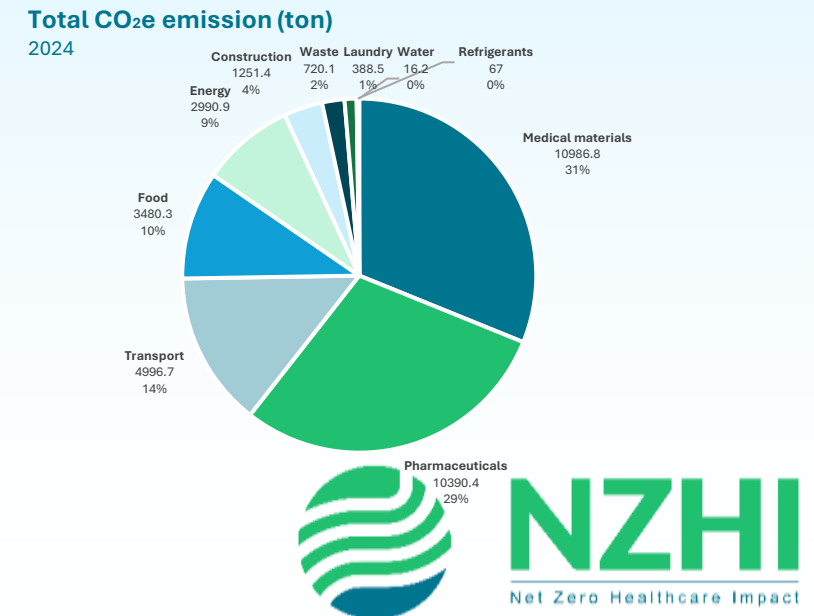
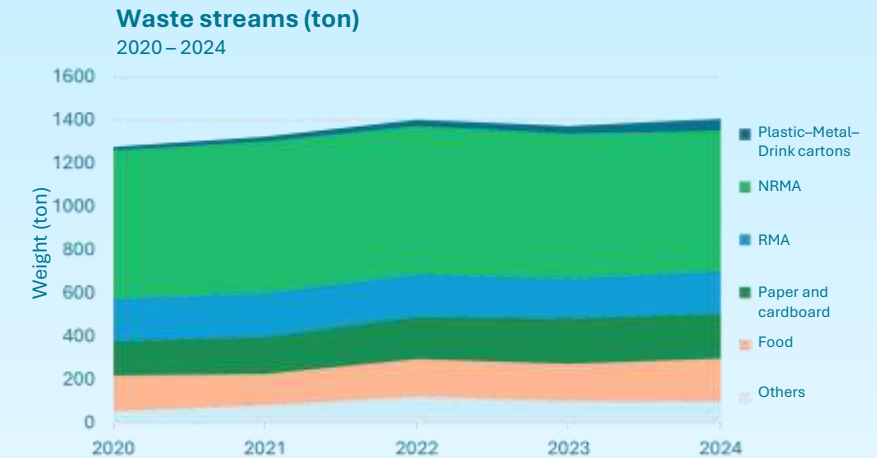
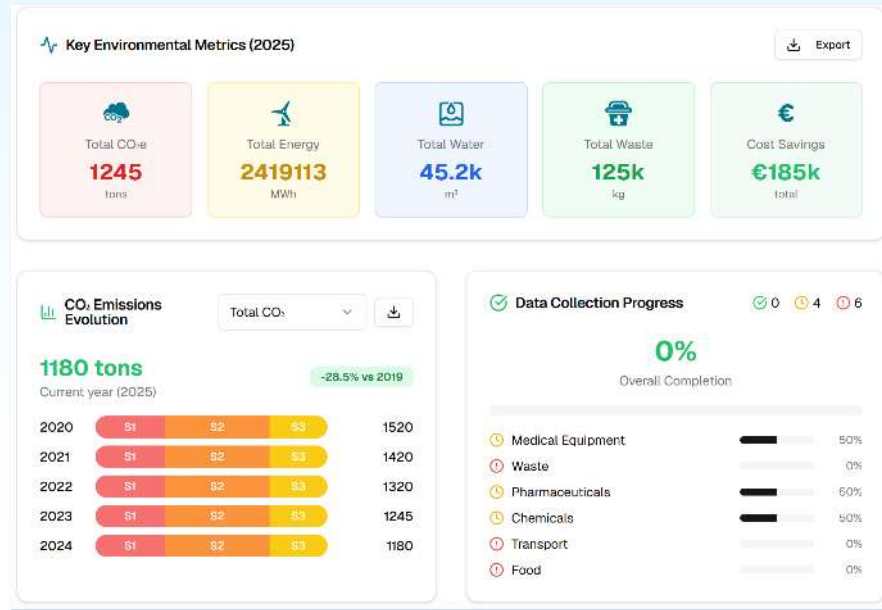
Positive partnerships.



From Data to Insight

Your teams gain insight into their sustainability data through:

- **Clear interpretation** of findings provided by our team
- An **EFRAG-aligned sustainability report**
- Access to the **NZHI tool** for visualisation and continuous monitoring



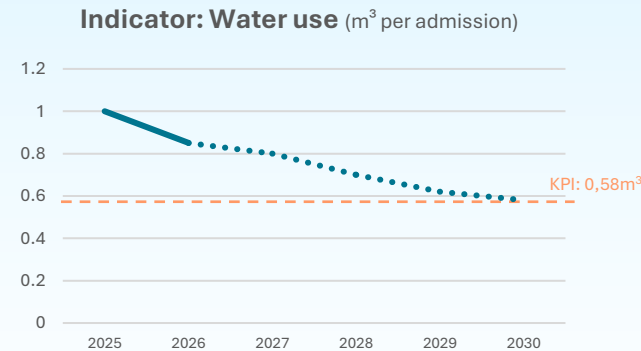
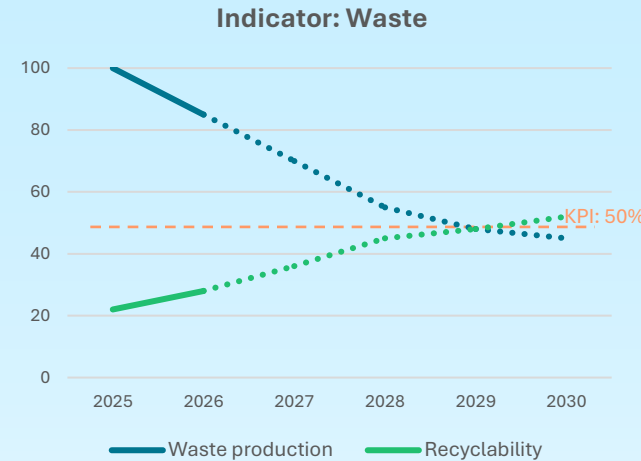
From Insight to Impact

Together with your internal stakeholders, we develop a **roadmap** toward a more sustainable and resilient hospital. To define **relevant economic and ecological KPIs**, we combine:

- Your hospital's insights and priorities
- Sector benchmarks and best practices
- Science-based targets

Through the **digital NZHI tool**, your teams gain full access to all data and can independently work with:

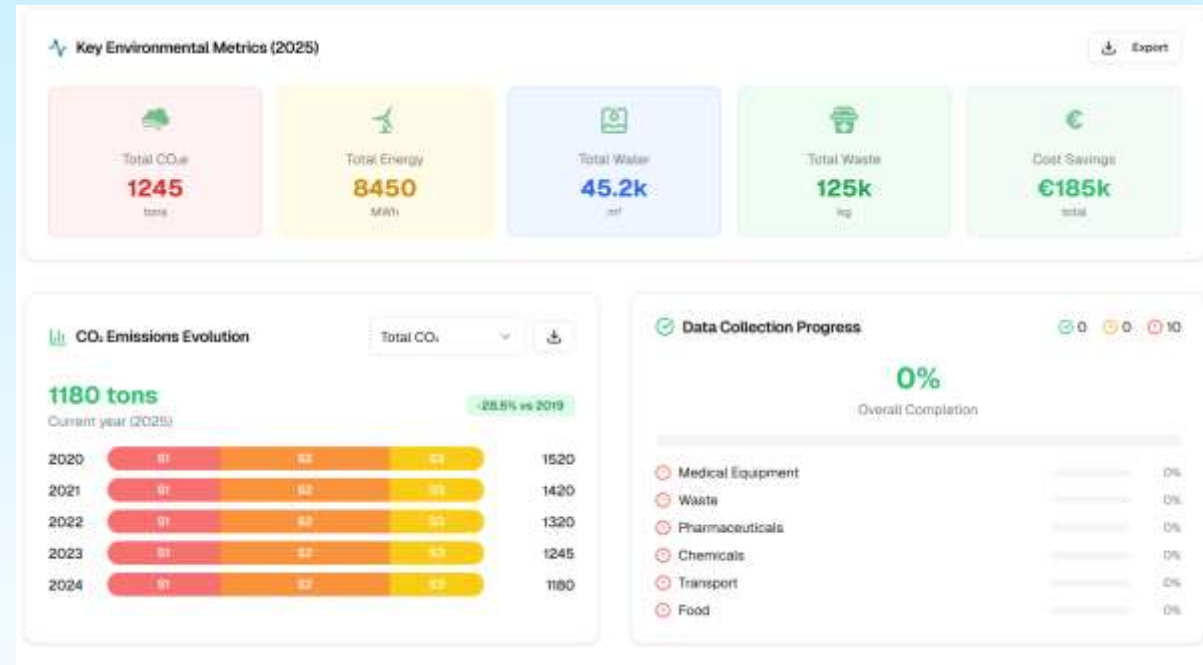
- Clear dashboards and visualisations
- Trend analyses and peer benchmarking
- Impact simulations of sustainability interventions



NZHI-tool

With our **digital tool**, your teams can get started with:

- Dashboards and visualizations
- Trend analyses
- Benchmarking
- Impact simulations



Return on Investment



Economic

Cost savings through:

- **lower single-use expenses** by switching to circular alternatives
- **reduced medication loss** via more efficient use and stock management
- **less food waste** due to improved planning and processes
- **lower energy and ETS2-costs** through more sustainable energy use



HR

Stronger workforce through:

- higher quality recruitment thanks to a more attractive employer image
- greater engagement and **job satisfaction** through a strong organisational identity
- improved **retention** of scarce and critical profiles



Strategic

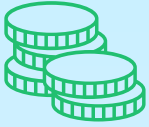
More resilient organization through:

- greater **supply security** thanks to less vulnerable supply chains
- early **detection of reputation risks**
- improved **data-integration and harmonisation** across campuses
- stronger **compliance** with European reporting requirements and quality standards



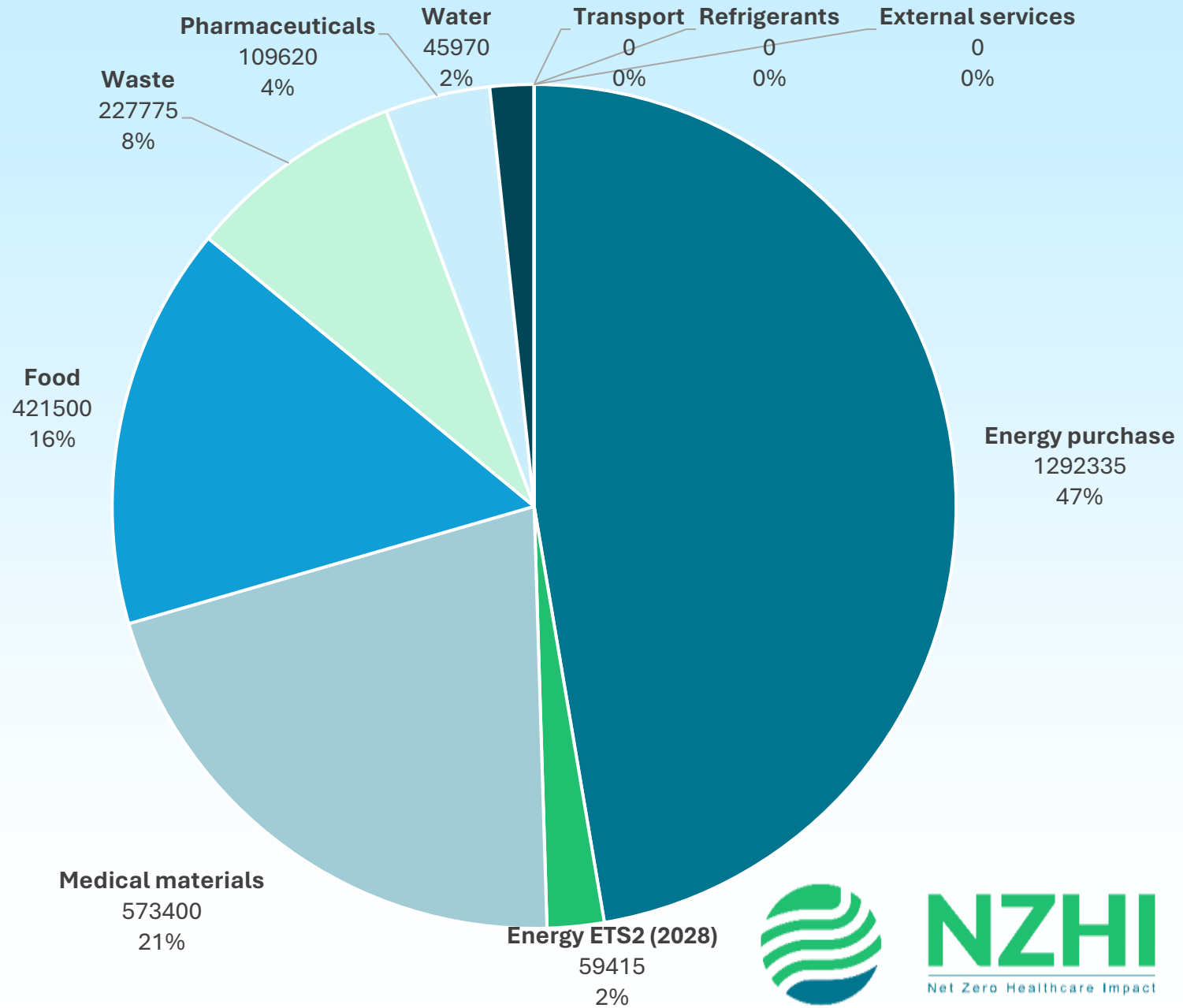
Ecologic





Economic ROI

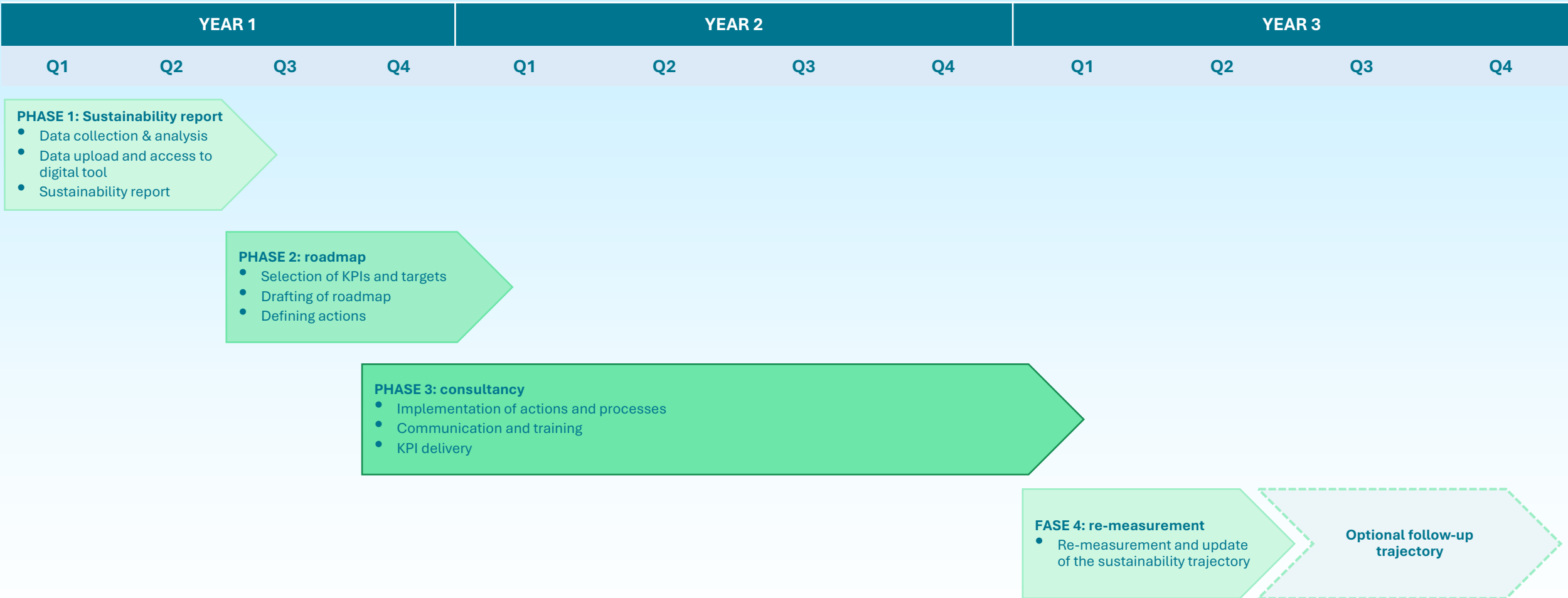
Savings of **€ 2,725,015**
for a hospital with 500 beds*



*extrapolation based on NZHI data



Example of a trajectory



This timeline is indicative. The trajectory is fully modular and can be adjusted, paused, or ended after each phase or each quarter.



Our offering



FOREST

- Full scoping and baseline assessment (Ecological or full ESG)
- Sustainability report
- Access to the digital dashboard
- Data collection and entry for all activities and locations, on-campus
- Quantitative and qualitative analyses
- Roadmap with strategic advice
- Follow-up of concrete actions and KPIs
- Repeated measurements



TREE

- Access to the digital dashboard
- Digital kick-off workshop
- Technical support
- 25 - 60 hours/year of methodological expert support for quantitative and qualitative analysis, off-campus



BRANCH

Tailored advice & projects, such as:

- Scoping of specific domains
- Sustainability workshops
- Roll-out of sustainable procurement policy
- Policy advisory
- Development and advisory for sustainability strategy



The team



Dr. Brecht De Tavernier

*Founder NZHI
Head of Emergency Medicine at ZAS
Vincentius & Augustinus, member of the
ZAS Medical Council*

*ED-physician with additional master's degrees
in economics and management.*

brecht.detavernier@nzhi.eu



Maarten Van Laere

Hospital Sustainability Lead

*Master's in Nursing and General Management.
International project experience withing the
Red Cross-movement.*

maarten.vanlaere@nzhi.eu



Dr. Ir. Emma Van Puyenbroeck

Data & Digital Transformation Lead

*Bio-engineer with a PhD. Expert in machine learning
and AI.*

emma.vanpuyenbroeck@nzhi.eu



Joris Baeten

*Co-founder NZHI & freelance
consultant*

*Entrepreneur with a passion for
sustainability. Expert in communication and
stakeholder engagement.*

joris.baeten@nzhi.eu



NZHI
Net Zero Healthcare Impact