

Everything has been changed, just except for the price  
Experience the fully increased value of NX SERIES

The new NX Series offering outstanding power, durability and operator comfort realizes customer satisfaction through providing the best productivity and convenience in various industrial applications.

### NEW STYLISH DESIGN

- Leg room is enlarged by about **30%** than previous model.
- Clearance & angle of accel & brake pedals are improved to decrease fatigue of ankle.
- Compact steering wheel allows quick control and reduces wrist fatigue.
- Mast visibility has improved by re-arranging the hoses & chains.
- Front/rear visibility have increased by improving the design of FCU & Counterweight
- Turning radius is reduced 15mm for narrow and compact working condition.



### MORE POWERFUL PERFORMANCE

- The combination of NX Series engine and rigid transaxle provides **25%** of gradeability with load.
- Through the optimized Doosan hydraulic system, NX Series has unbeatable travel / lifting speed.

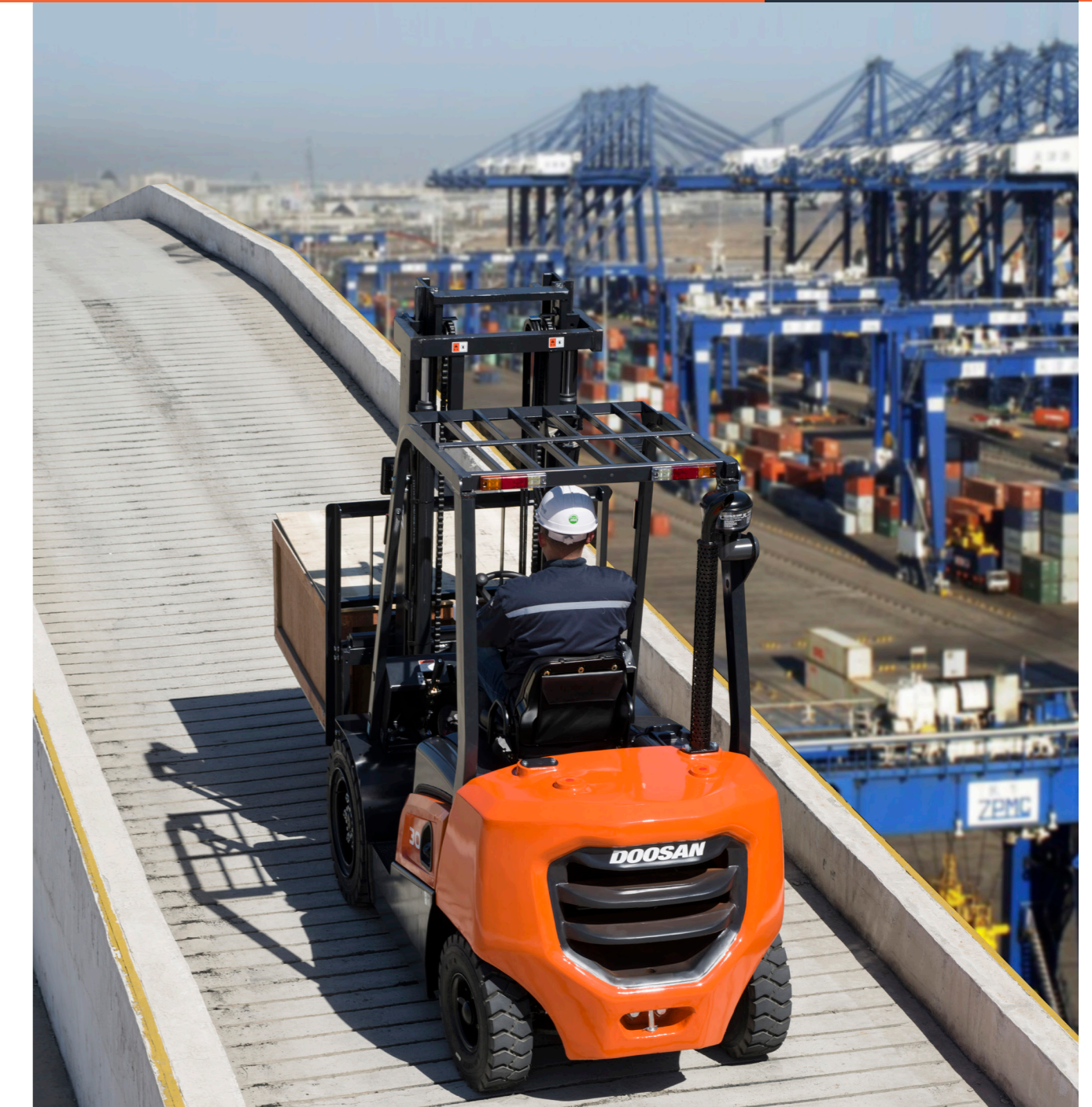
### MORE DURABLE DESIGN

- **New aux. weight design** lowers the center of gravity and helps reducing noise, vibration and heat.
- Cooling capacity has been increased by optimizing the air flow of engine room and counter weight design.
- Anti dust head guard design and dual element air cleaner extend the service interval and guarantee the durability of engine
- The mast is heavier than its competitors and has higher rigidity, which makes operation more stable.

D20NXP / D25NXP / D30NXP / D33NXP / D35NXP  
D20NXV / D25NXV / D30NXV / D33NXV / D35NXV

## NX SERIES FORKLIFTS

Diesel 2.0 to 3.5 ton capacity



## Excellent Operator Comfort

The operator compartment is more spacious and ergonomically designed to reduce driver's fatigue. It enables more comfort and safe operation.



### LED Lamp

Long-lasting, high-brightness LED lights is equipped as standard feature.



### Small Steering Wheel

Compact steering wheel offers steering convenience and reduces operator fatigue

### Large Entry Grip Bar

Large grip bar helps easy and safe entry.



### Clear Mast Visibility

Neatly arranged hoses and chains provides clear front view .

### Panoramic Mirror

The panoramic mirror offers wide rear view and greatly improves driving safety.

### Integrated Lamp Switch

The turn signal and head lamp switches are integrated for convenient operation.

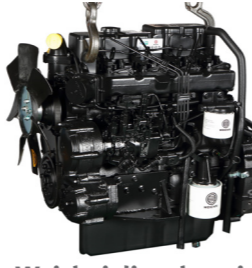


## Powerful Performance

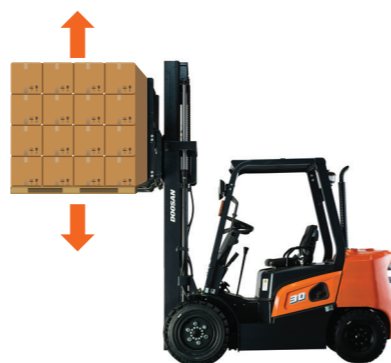
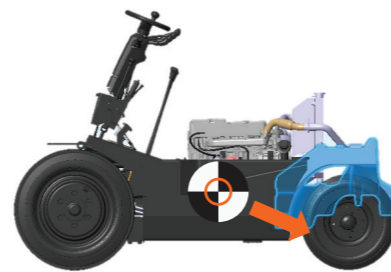
The combination of powerful engine and aux. weight structure maximizes powerful performance and makes it easy to go up the 25% steep slopes.



▲ Yanmar diesel engine



▲ Weichai diesel engine



### High Powered, Fuel Efficient Engine

Yanmar diesel engine is a high-torque at low RPM engine designed for industrial vehicles. It effectively improves the acceleration, driving and climbing performance of the forklift.

Weichai diesel engine gives high performance. Its optimized torque & RPM ratio gives maximum working performance even at climbing and lifting.

### Aux. Weight

The new aux. weight structure effectively reduces engine vibration and ensuring vehicle durability. The lowered center of gravity enhances lifting power and capacity at high height racking. Aux. weight structure also gives better cooling capacity by improving air flow.

Max Gradeability  
(@1.6km/h, Laden, 3.0t capacity truck)

Manufacturer	Doosan	T**	M**	H**	H2**
Model	NX	Zxx	Fxx	Kxx	Axx
Max Gradeability	25.60%	22.80%	23.90%	21%	20%

### High Speed of Lifting / Lowering

Gear pump and mast regulator valve are optimized to increase the lifting/lowering speed and it makes operation more productive.

