

# E&T INTELLIGENCE SINGAPORE. PTE. LTD.

*Transforming operations with flexible and efficient self-driving and remote control technology, featuring precise manipulation for enhanced productivity and safety in heavy industries.*



# ORGANIZATION DESCRIPTION

**E&T Intelligence** is a technology company dedicated to revolutionizing heavy industries through AI-enabled self-driving and precision manipulation solutions. Our innovations enhance efficiency and safety across sectors such as metallurgy, construction, mining, and port operations.



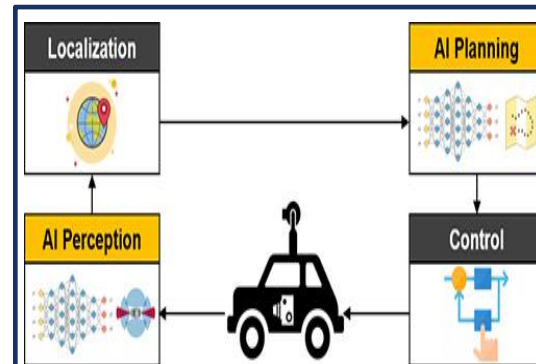
## Self-Driving for Industrial Applications

At the forefront of low-speed self-driving technology, we focus on creating specialised solutions for non-open-road industrial applications, bringing our mobile manipulation systems to spaces where traditional vehicles can't go.



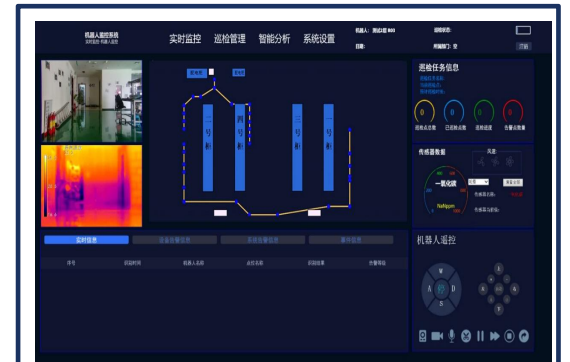
## Tele-operation of Vehicles and Robots

Leveraging advanced remote driving technology, our system enables control room operators to manage vehicles and robots through real-time onboard camera feeds, allowing for timely remote intervention that enhances safety and boosts productivity.



## AI-Driven Perception and Control

Advanced algorithms enable sophisticated understanding of and interaction with the environment. Deployment of AI at the edge ensures immediate response and decision-making, as well as enhanced data security.



## Management of Vehicles and Robots

We offer a comprehensive remote management solution tailored to your specific application needs. It enables real-time fleet dispatching and monitoring, high-precision map updates, and data analysis.

# PROJECT CASES

## Case 1: Fully autonomous driving and automatic operation of steel slag transport vehicles

- Successfully Modified 5 heavy-duty industrial vehicles in **Guangxi, China**.



### Technical Specifications:

- Control Mode: Dual (**Self-Driving and Tele-operation**)
- Dimensions: Length 17m, Width 5m, Height 3.5m
- Weight: 30 tons (Self-Weight)
- Capacity: 70 tons (Payload)
- Engine: Internal Combustion Engine (ICE)
- Navigation: Integrates RTK and Visual Tracking Technologies
- Tele-operation Cabin: Customized by our team

## Case 2: Remote driving of heavy loader

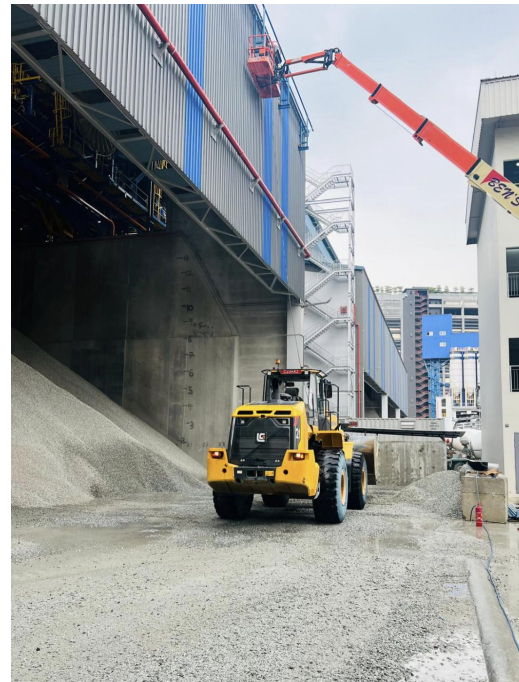
- Successfully deployed a remote driving system in a heavy loader with an 18-ton payload in a steel smelting plant in **Yekaterinburg Russia**.



# PROJECT CASES

## Case 3: Autonomous Front Wheel Loaders (AFWLs) in construction industry

Develop and deploy autonomous front wheel loader (AFWLs) in a concrete factory in **Singapore**, to transport raw materials (aggregate) from stockyard bunker to conveyor belts, filling silo materials hopper ***round the clock***.



## Case 4: Remote driving of copper smelting charging truck

Successfully implemented and deployed remote driving system at Copper smelting charging truck in **Jiangxi Province, China**.





# COLLABORATION: AREAS OF INTEREST

We are looking for partners in heavy industries, including metallurgical, mining, construction industry and port.

- Objectives:
  - to research the application of self-driving in industrial scenarios
  - deliver transformative AI-driven mobile manipulation systems
- Expected results:
  - Free drivers from harsh heavy industrial environments
  - improve the safety of operations
  - improve efficiency, flexibility
  - ensure businesses excel in a dynamic global landscape



---

## **E&T Intelligence Singapore. Pte. Ltd.**

Sherry Huang

Co-founder

Email: [sherry\\_huang@et-intelligence.sg](mailto:sherry_huang@et-intelligence.sg)

Tel: (+65) 8171 8013

<https://www.et-intelligence.com/>

