

“Kamp C | Strengthening the **sustainable value chain** in the construction sector

**Sofie Torfs | Maro Saridaki**

**Kamp C (regional authority) | Centre for sustainability and innovation for the construction sector**

**Province of Antwerp | BELGIUM**

[info@kampc.be](mailto:info@kampc.be)

[kampc.be](https://kampc.be)





KAMP C

The centre for sustainability and  
innovation in the construction sector

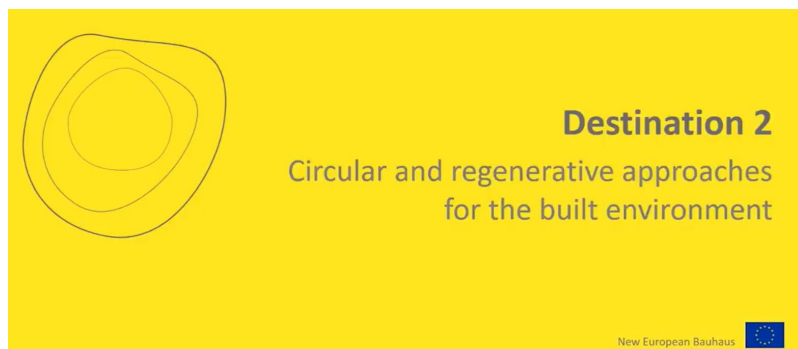


# 9 detailed pilots & cluster offers for NEB calls



## ★ Bringing together diverse local municipalities & stakeholders ★

- ◆ HORIZON-NEB-2025-01-PARTICIPATION-01
- ◆ HORIZON-NEB-2025-01-PARTICIPATION-02
- ◆ HORIZON-NEB-2025-01-PARTICIPATION-04



- ◆ HORIZON-NEB-2025-01-REGEN-01
- ◆ HORIZON-NEB-2025-01-REGEN-02
- ◆ HORIZON-NEB-2025-01-REGEN-03
- ◆ HORIZON-NEB-2025-01-REGEN-04



- ◆ HORIZON-NEB-2025-01-BUSINESS-01
- ◆ HORIZON-NEB-2025-01-BUSINESS-03

## ★ Looking for coordinators and inspiring international partners ★

# MISSION AND VISION

We help researchers, companies and builders develop and scale up new solutions for sustainable construction.

“Kamp C strengthens the **sustainable value chain** in the construction sector.

We believe that sustainable building is more than using solar panels and hemp. Equally important is affordability, biodiversity, and public space that invites encounters.

## 6 pillars





# ACTIVITY

We make the future of construction tangible.



demonstration zone



education



consultancy

“

Kamp C guides ambitious clients, local authorities and other stakeholders in trajectories and projects to develop inspiring and tangible examples.



KAMP C

DEMONSTRATION

“ At Kamp C inspiring innovations  
are showcased and tested.



# ACTIVITY

We participate and coordinate a wide range of EU projects: HORIZON | LIFE | INTERREG



# INNOVATIVE TRAJECTORIES

## TRAJECT

- **Goal:** building **CIRC**ular and **Strategic** climate-safe cities and towns
- Annual guidance for ambitious local municipalities to make their building stock more sustainable and circular.
- Tangible projects follow from these sessions.





# VONK! a 'spark' for change

- ◆ Kamp C is creating an innovation centre for biobased and circular building materials and strategie





## ◆ HORIZON-NEB-2025-01-REGEN-01: Applying regenerative design to the built environment in neighbourhoods



### Pilot offered

- **Urban & Peri-Urban renovations with circular principles**
  - municipality of Zoersel (inner city)
  - municipality of Herselt (industry & school)

### Cluster (BE/NL)

- Kamp C, municipalities of Zoersel and Herselt
- Biobased Creations
- Province of Antwerp | dept. Housing

### Following knowledge gained in project

- EHHUR (NEB HORIZON)



**ZOERSEL**







## HORIZON-NEB-2025-01-REGEN-02: Bio-fabricated materials for sustainable and beautiful construction



### Pilot offered

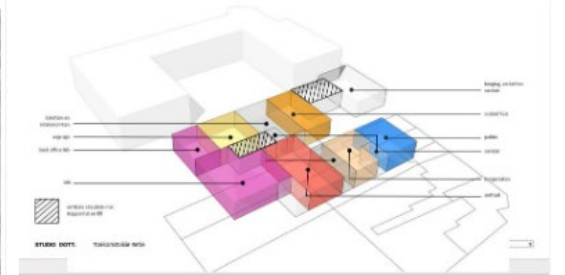
- **Town Hall as biobased Lighthouse**
  - Rural municipality of Retie (exterior)
- **Multipurpose Hall beautiful acoustics**
  - Municipality of Herentals (interior)

### Cluster (BE/NL)

- Kamp C, municipalities of Retie & Herentals
- ACE, Biobased Creations

### Following knowledge gained in project

- EHHUR (NEB HORIZON)
- CBCI (Interreg 2Seas)





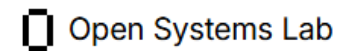
## ➤ HORIZON-NEB-2025-01-REGEN-04: Innovative approaches for sustainable, inclusive and beautiful social and affordable housing



### Cluster ecosystem (BE/NL/UK)

#### • Scaling up Innovation

- Open Systems Lab, WikiHouse, Almere
- Sliding-in House (Inhout-Mobble)
- Kamp C, province of Antwerp (dept.Housing)
- Circl, KU Leuven



### Following knowledge gained in project

- Housing 4.0 Energy (NWEurope)
- CBCI (Interreg 2Seas)
- Impac3t (VLAIO)







## ➤ HORIZON-NEB-2025-01-BUSINESS-01: Renovating the built environment through design for adaptability and disassembly.



### Pilot offered

- **Adaptable Interiors for social services**
  - Simultaneous renovation of 2 Municipal buildings (modern and historical)
  - Applying Circular and biobased principles

### Cluster (BE)

- Kamp C, municipality of Bonheiden, SAAMO, Klimaan energy cooperative

### Following knowledge gained in project

- EHHUR (NEB HORIZON)
- CBCI (INTERREG 2Seas)
- TANDEMS (LIFE)



“Kamp C | Strengthening the **sustainable value chain** in the construction sector

**Sofie Torfs | Maro Saridaki**

**Kamp C (regional authority) | Centre for sustainability and innovation for the construction sector**

**Province of Antwerp | BELGIUM**

[info@kampc.be](mailto:info@kampc.be)

[kampc.be](https://kampc.be)