

# ***KLIMA-PUR® Windows***

**THE NEXT GENERATION OF  
WINDOWS & DOORS.**

**FOR SUSTAINABLE ENERGY-EFFICIENT BUILDINGS**



# 01 BENEFITS OF KLIMA-PUR®



KLIMA-PUR® is a new range of ultra-energy-efficient windows certified for PassivHaus homes and inspired by traditional timber windows. They incorporate high-density (bio)Polyurethane resin as the sole material in the frame construction.

The profiles are made of solid foamed structure, offering significantly better performance than PVC and aluminum. Our windows combine the benefits of timber windows without their maintenance requirements.



## Optimal energy-saving

Its superior performance avoids the thermal bridges, thus enabling substantial cost reductions in your energy bills.



## Increased lifespan

PUR is a thermoset material requiring low maintenance due to its excellent thermal and chemical resistance, as well as high dimensional stability and wear resistance.



## Sustainable-by-design

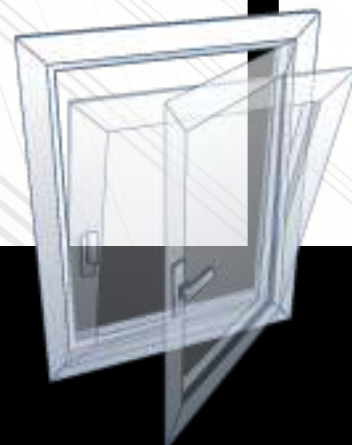
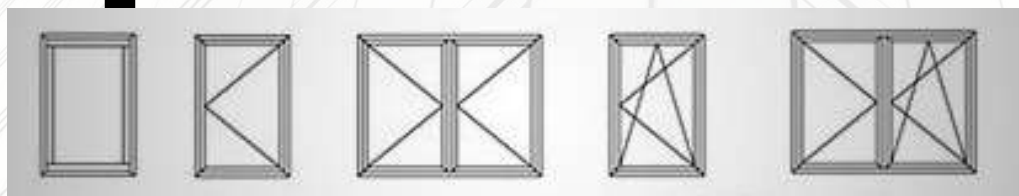
KLIMA-PUR® is made from an easy-to-separate material that offers an alternative to fossil-based products. Its biobased version (bioPUR) includes a high content of renewable raw materials, leading to low C-Footprint windows & doors.



# 02

## SYSTEM DESCRIPTION

KLIMA-PUR® are windows & doors with superior performance in terms of thermal and acoustic comfort, being optimal for cold climates due to its broad range of working temperatures (-20°C to 70°C) and for aggressive environments such as humid and sea-coast areas due to its chemical resilience. KLIMA-PUR® windows & doors are specially designed for new buildings, retrofitting, and energy renovation activities within the residential and commercial segments.



KLIMA-PUR® integrates top-quality hardware system allowing turn, tilt & turn, fixed and curvy windows, thus adapting to all architectural designs while making possible any combination and customization. Ask us for your special design!

Maximum size: 3000 mm x 3000 mm



# KEY FEATURES

# 03

KLIMA-PUR® offers the best performance in the window & door market.

The excellent thermal insulation of PUR makes it perfect for Passive Buildings while the joint system improves air infiltration.

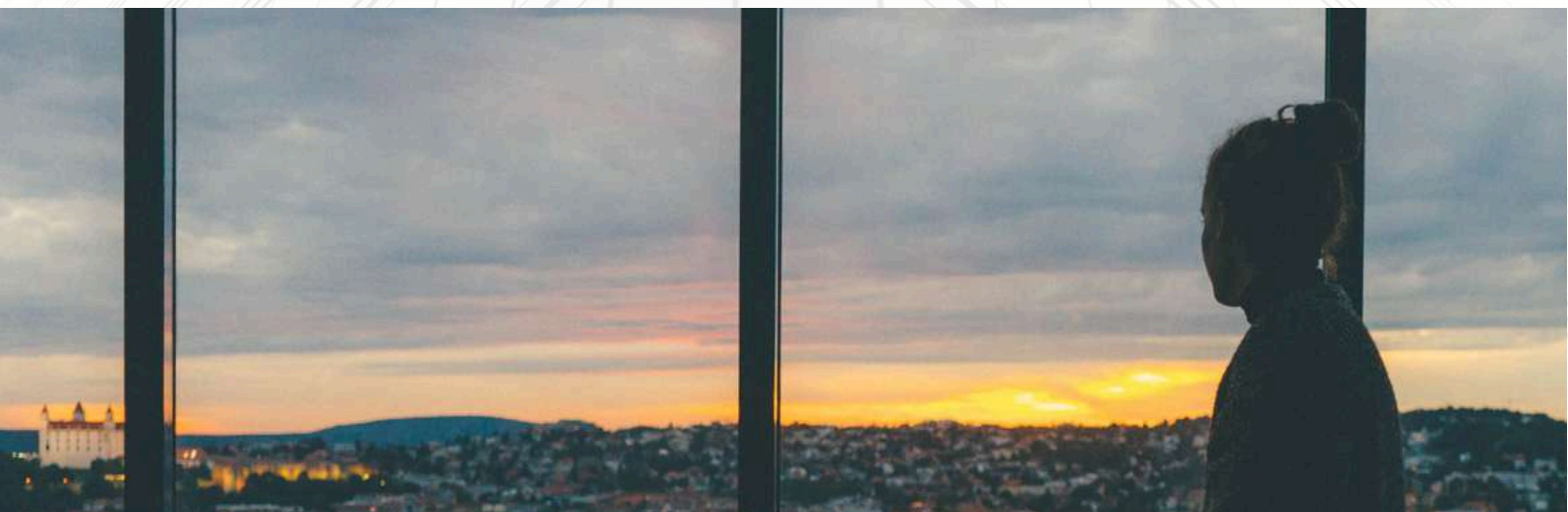
$U_f = 0.88$   
W/m<sup>2</sup>K



**Energy efficiency  
first!**

Minimal maintenance with high durability in a compact and low deformable structure, leading to a high resistance to external agents.

Our joint system provides maximum water tightness against humidity or condensation while providing an enhanced acoustic barrier.



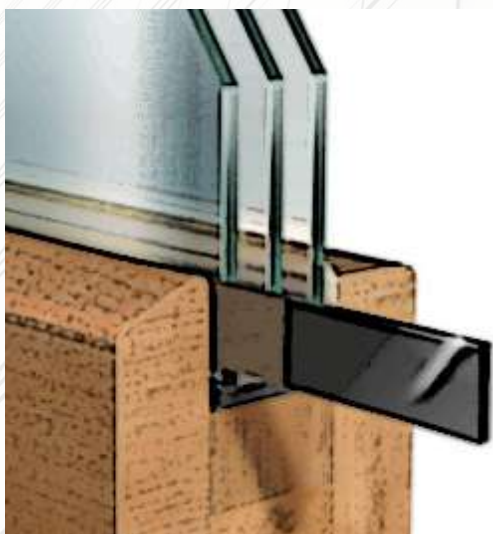
# 04

## HARDWARE & GLAZING



KLIMA-PUR® uses world's best-selling hardware system for windows & doors. Roto® is the selected brand meeting the top quality standards required in our high performance product.

KLIMA-PUR® relies on **Grupo Navas** to offer glasses with optimal thermal and acoustic performance. **Grupo Navas** has a long history and experience in the window market



KLIMA-PUR® incorporates a glazing band, which increases the tightness of the glass and improves load distribution. This tape is highly resistant to temperature, UV rays and weather.

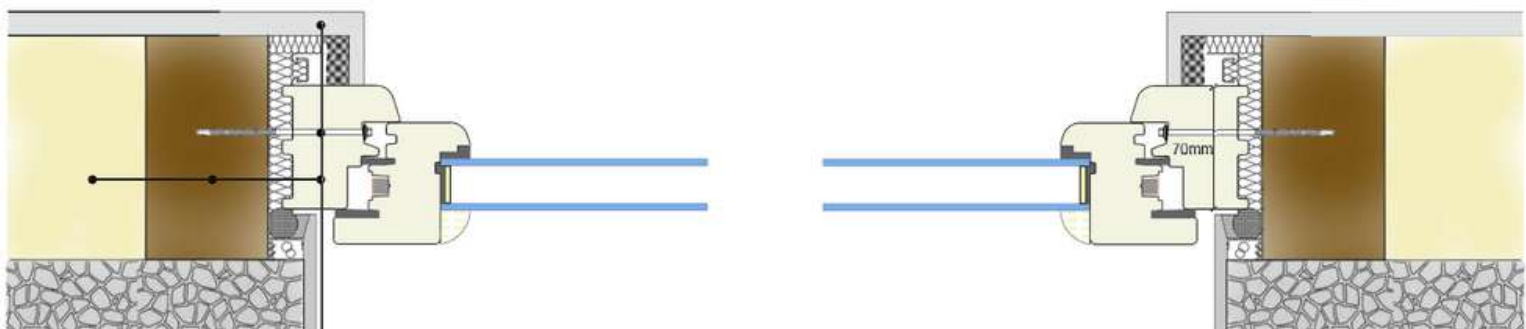
Maximum glass thickness: 40 mm.





# 05 OWN STYLE

KLIMA-PUR® combines functionality, design and lightness with a new own style.



Simple design with elegant shapes, allowing the imitation of other materials while integrating both rustic and modern architectural styles. Available in a wide range of colours and textures (timber, metallic & plastic).



# EXAMPLES OF WINDOWS 06





# EXAMPLES OF PROJECTS 07





# THERMAL PERFORMANCE COMPARATIVE

# 08

KLIMA-PUR® offers superior thermal performance compared to other materials, with the thermal transmittance of a 69 mm profile being one of the lowest on the market in the energy-efficient window sector.



KLIMA-PUR®

Timber

PVC

Aluminum

FRAME WIDTH (69 mm)	TRANSMITTANCE (W/m <sup>2</sup> .K)	INSULATION PERFORMANCE
Aluminum	5,7	Very Low
Aluminum (Thermal Break 4<d<12 mm)	4	Low
Aluminum (Thermal Break d>12 mm)	3,2	Medium
PVC (5 air chambers)	2	Medium
PVC (5 air chambers)	1,8	High
Hard Wood (700 kg/m <sup>3</sup> )	1,7	High
Soft Wood (500 kg/m <sup>3</sup> )	1,3	Very High
KLIMA-PUR Windows	0,88	Extremely High

# DECLARATION OF PERFORMANCE (1-LEAF WINDOW)

09

## SIMPLIFIED PRODUCT REPORT EN 14351-1:2006+A2:2016



NÚMERO DE INFORME: 258687

Report Nr.

PETICIONARIO

Applicant

INDRESMAT, S.L.

Ctra. del Mig, 75.

08907- L'Hospitalet de Llobregat. Barcelona

PRODUCTO

CONSTRUCCIÓN

Contraction product

NORMA ARMONIZADA

Harmonized standard

REFERENCIA<sup>(1)</sup>

Reference

MATERIAL<sup>(1)</sup>

Material

ACRISTALAMIENTO<sup>(1)</sup>

Glazing element

FECHA DE EMISIÓN

Date of issue

EN 14351-1:2006+A2:2016

Serie: KLIMA-PUR

High Density Polyurethane

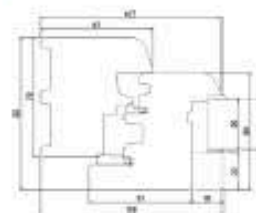
LamiGlass 44.2sp. ClimaGuard Premium 2/ 18

Argón/ Float 4

18.07.2023

Organismo Notificado nº 1668  
Reglamento (UE) Nº 305/2011

Section of frame <sup>(2)</sup>



EN 14351-1:2006 + A2:2016				
Dimensions 950mm width x 2200 mm height				
Essential features	Apdo	Standard and classification	Classs	Report
Air Tightness	4.14	UNE-EN 1026:2017. UNE-EN 12207:2017	CLASS 4	258496
Water Tightness	4.5	UNE-EN 1027:2017. UNE-EN 12208:2000	CLASS E <sub>750</sub>	258496
Wind Load Resistance	4.2	UNE-EN 12211:2017. UNE-EN 12210:2017	CLASS C2	258496
Static Torsion Resistance	4.8	UNE-EN 14609:2004. UNE-EN 14609 ERRATUM:2010	CLASE 4 350 N	258498
Acoustic Damping <sup>(2)</sup>	4.11	Anex B. UNE-EN 14351:2006+A2:2017	43(-3;-7) dB	258501
Thermal Transmittance <sup>(3)</sup>	4.12	UNE-EN ISO 10077-1:2020	1,1 W/m²K	258504

<sup>(1)</sup> Acrístalemento utilizado Rw: 40(-1;-6) dB. <sup>(2)</sup> Acrístalemento utilizado Ug: 1,1 W/m²K

ENSATEC, S.L.U., declara que el producto cumple con las características esenciales establecidas en la norma de producto EN 14351-1:2006+A2:2016

Luis García Viguera

Director Técnico Departamento  
Department Director

GARCIA  
VIGUERA LUIS  
- 16537975D

Firmado digitalmente  
por GARCIA VIGUERA  
LUIS - 16537975D  
Fecha: 2023.07.19  
14:48:01 +02'00'



El resultado del presente ensayo/s no concierne más que al objeto/s ensayado/s. Los informes firmados electrónicamente en soporte digital se consideran un documento original, así como las copias electrónicas del mismo. Su impresión en papel no tiene validez legal. Regla de decisión: Para dar clasificación, se va emplear una regla de decisión binaria (pasa-no pasa) con criterio de aceptación simple con un riesgo específico inferior al 50% de Probabilidad Falsa (PFA). <sup>(1)</sup> ENSATEC, S.L.U., declina toda la responsabilidad sobre la información aportada por el cliente.



# DECLARATION OF PERFORMANCE (2-LEAF WINDOW)

## SIMPLIFIED PRODUCT REPORT EN 14351-1:2006+A2:2016



NÚMERO DE INFORME: 258505

Report Nr.

PETICIONARIO

Applicant

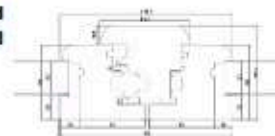
INDRESMAT, S.L.  
Ctra. del Mig, 75.  
08907- L'Hospitalet de Llobregat. Barcelona

Organismo Notificado nº 1668  
Reglamento (UE) Nº 305/2011

Sección y/o fotografía #:

PRODUCTO CONSTRUCCIÓN  
Constrution product

Balcony door and tilt-and-turn window with inward opening, featuring vertical and bottom horizontal pivoting on two right-hand sashes.



NORMA ARMONIZADA  
Harmonized standard

EN 14351-1:2006+A2:2016

REFERENCIA<sup>(1)</sup>

Serie: KLIMA-PUR

Reference

MATERIAL<sup>(1)</sup>

Polyurethane

Material

ACRISTALAMIENTO<sup>(1)</sup>

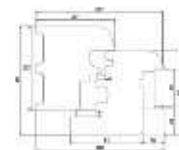
LamiGlass 44.2sp. ClimaGuard Premium 2/ 18 Argón/  
Float 4

Glazing element

FECHA DE EMISIÓN

18.07.2023

Date of issue



EN 14351-1:2006 + A2:2016				
Dimensions 1500 mm width x 2200 mm height				
Essential features	Apdo	Standard and classification	Class	Report
Air Tightness	4.14	UNE-EN 1026:2017. UNE-EN 12207:2017	CLASS 4	258497
Water Tightness	4.5	UNE-EN 1027:2017. UNE-EN 12208:2000	CLASS 9A	258497
Wind Load Resistance	4.2	UNE-EN 12211:2017. UNE-EN 12210:2017	CLASS C1 CLASS A2	258497
Static Torsion Resistance	4.8	UNE-EN 14609:2004. UNE-EN 14609 ERRATUM:2010	CLASS 4 350 N	258498
Acoustic Damping <sup>(2)</sup>	4.11	Anexo B. UNE-EN 14351:2006+A2:2016	42(-3;-7) dB	258501
Thermal transmittance <sup>(3)</sup>	4.12	UNE-EN ISO 10077-1:2020	1,2 W/m²K	258504
Dimensions 1230mm width x 1480 mm height				
Essential features	Apdo	Standard and classification	Class	Report
Air Tightness	4.14	UNE-EN 1026:2017. UNE-EN 12207:2017	CLASE 4	258499
Water Tightness	4.5	UNE-EN 1027:2017. UNE-EN 12208:2000	CLASE E750	258499
Wind Load Resistance	4.2	UNE-EN 12211:2017. UNE-EN 12210:2017	CLASE C3	258499
Acoustic Damping <sup>(2)</sup>	4.11	UNE-EN ISO 10140-2:2022	43(-3;-7) dB	258500

<sup>(2)</sup> Acristalamiento utilizado Rw: 40(-1;-6) dB. <sup>(3)</sup> Acristalamiento utilizado Ug: 1,1 W/m²K

ENSATEC, S.L.U. declara que el producto cumple con las características esenciales establecidas en la norma de producto EN 14351-1:2006+A2:2016

GARCIA

Firmado digitalmente  
por GARCIA VIGUERA

Luis García Viguera  
Director Técnico Departamento

VIGUERA LUIS  
- 16537975D

LUIS - 16537975D  
Fecha: 2023.07.19  
14:50:20 +02'00'

Department Director



El resultado del presente ensayo/s no concierne más que al objeto/s ensayado/s. Los informes firmados electrónicamente en soporte digital se consideran un documento original, así como las copias electrónicas del mismo. Su impresión en papel no tiene validez legal. Regla de decisión: Para dar clasificación, se va emplear una regla de decisión binaria (pasa-no pasa) con criterio de aceptación simple con un riesgo específico inferior al 30% de Probabilidad Falsa (PPA). <sup>(1)</sup> ENSATEC, S.L.U., declina toda la responsabilidad sobre la información aportada por el cliente.

PY23-0252/ Documento Nº 28505

Pág. 1 / 1

## CERTIFICATE

Certified Passive House Component

Component-ID 2442wi04 valid until 31st December 2025

Passive House Institute  
Dr. Wolfgang Feist  
64283 Darmstadt  
Germany

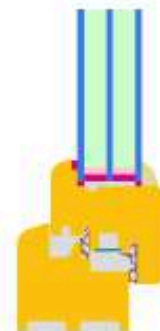


Category: Window Frame  
Manufacturer: INDRESMAT SL,  
L'Hospitalet del Llobregat, Barcelona,  
Spain  
Product name: KLIMA-PUR

This certificate was awarded based on the following  
criteria for the warm, temperate climate zone

Comfort  $U_W = 1.00 \leq 1.00 \text{ W}/(\text{m}^2 \text{ K})$   
 $U_{W, \text{installed}} \leq 1.05 \text{ W}/(\text{m}^2 \text{ K})$   
with  $U_g = 0.90 \text{ W}/(\text{m}^2 \text{ K})$

Hygiene  $f_{Rsi=0.25} \geq 0.65$



Passive House  
efficiency class

phE

phD

phC

phB

phA

[www.passivehouse.com](http://www.passivehouse.com)

warm, temperate climate



**CERTIFIED  
COMPONENT**

Passive House Institute



# SOLAR IMPULSE EFFICIENT LABEL

# 12



## THE SOLAR IMPULSE EFFICIENT SOLUTION LABEL: A NEW APPROACH TO PROTECT THE ENVIRONMENT

KLIMA-PUR® has been awarded with the **SOLAR IMPULSE LABEL**, which is a certification that applies to products, processes and services combining economic profitability and environmental sustainability.



### BUILDING A BETTER WORLD

Going for sustainability: KLIMA-PUR® frames are manufactured with a very low energy-consuming technology (0.13 kWh/kg), thus reducing the CO<sub>2</sub> emissions in their manufacturing.

Its single material configuration, high biobased content, easy recycling, and circular design; makes possible to provide a C-Footprint similar to wood.



INDRESMAT is committed to the SDGs.



**KLIMA-PUR<sup>®</sup>**  
*Windows*

info@klima-pur.eu  
www.klima-pur.eu

## HEADQUARTERS

Ctra. del Mig 75,  
08907, L'Hospitalet de Llobregat,  
SPAIN

+34 935 139 887

## INTERNATIONAL OFFICE

Urmonderbaan 22, Gate 2,  
RD6167, Geleen,  
THE NETHERLANDS

+31 644 626 024

