

SINCE 2004

CHINGMASS INDUSTRIAL CO., LTD.



ABOUT US

- ▶ Chingmass Industrial Co., Ltd. established in 2004, over 19 years' improving, Chingmass company already supplied tens of thousands of products to more than 30 countries.
- ▶ Our company's main producing items are: customized aluminum extrusion parts, stamping parts, tube bending and welding. Applied fields: auto parts, yacht accessories, building hardware, solar energy, farm and ranch hardware, home appliances hardware.
- ▶ By leading into new producing technologies and managing methods, Chingmass company will constantly supply newer and better products to all the customers.



COMPANY ENVIROMENT

Office and storage area

Storage areas for semi-finished products, packaging materials, and stamping toolings.



COMPANY EQUIPMENT

Stamping and spot-welding area

Stamping machines capacities: from 45 tons to 160 tons. Spot-welding machine for sheet metal parts' connection.



COMPANY EQUIPMENT

Post-machined and toolings storage area

Post-machined area: rivet machines, terminal machines, blister packaging machine. Assembly area with semi-auto air tools.





COMPANY EQUIPMENT

Progressive Stamping System

Stamping capacity: 160 tons. Sheet metal
thickness: 0.3~3.2mm, width: 30~500mm

COMPANY CERTIFICATION

D-U-N-S CERTIFIED

Certified by Dun & Bradstreet.



COMPANY CERTIFICATION

ISO 9001:2015

Certified by British Assessment Bureau.





Stamping Parts

Material: C1020
Thickness: 2.0 (Ø6.0) mm
Dimensions: 78 x 25 mm
Finish: Nickel Plated

Stamping Parts

Material: 1010
Thickness: 3.0 mm
Dimensions: 120 x 75 mm
Finish: Zinc Plated



Stamping Parts

Material: SPCC / 1010
Thickness: 2.0 (Ø7.0) mm
Dimensions: 70 x 75 mm
Finish: Zinc Plated

STAMPING PARTS

- ▶ Stamping processing : Punching, blanking, bending, coining, embossing, deep drawing, riveting.
- ▶ Surface treatment : Vibration grinding, polishing, powder/liquid coating, plating.
- ▶ Commonly used materials: SPCC, SPHC, SGC, SECC, SPFC, SAPH, SPFH, AL5052/6061/6063, SUS304/SUS316, C1020/C1100
- ▶ Processing thickness: 0.4 ~ 10.0 mm (AL > 6.0mm)

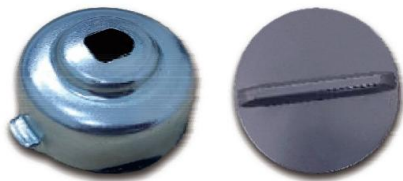


Stamping Parts

Material: AL6063
Thickness: 1.6 mm
Dimensions: 780 x 160 mm
Finish: Powder Coating

Stamping Parts

Material: SPCC
Thickness: 2.5 mm
Dimensions: 250 x 70 mm
Finish: Powder Coating



Stamping Parts

Material: SPCC
Thickness: 0.8 mm
Dimensions: 95 x 20 mm
Finish: Powder Coating

STAMPING PARTS

- ▶ Stamping processing : Punching, blanking, bending, coining, embossing, deep drawing, riveting.
- ▶ Surface treatment : Vibration grinding, polishing, powder/liquid coating, plating.
- ▶ Commonly used materials: SPCC, SPHC, SGC, SECC, SPFC, SAPH, SPFH, AL5052/6061/6063, SUS304/SUS316, C1020/C1100
- ▶ Processing thickness: 0.4 ~ 10.0 mm (AL > 6.0mm)

Stamping Parts

Material: SPCC
Thickness: 2.0 mm
Dimensions: 230 x 55 mm
Finish: Grinding, Chrome Plated



Stamping Parts

Material: SPCC
Thickness: 2.0 mm
Dimensions: 120 x 30 mm
Finish: Zinc Plated



Stamping Parts

Material: SUS304
Thickness: 0.5 mm
Dimensions: 800 x 20 mm
Finish: Liquid Coating



STAMPING PARTS

- ▶ Stamping processing : Punching, blanking, bending, coining, embossing, deep drawing, riveting.
- ▶ Surface treatment : Vibration grinding, polishing, powder/liquid coating, plating.
- ▶ Commonly used materials: SPCC, SPHC, SGC, SECC, SPFC, SAPH, SPFH, AL5052/6061/6063, SUS304/SUS316, C1020/C1100
- ▶ Processing thickness: 0.4 ~ 10.0 mm (AL> 6.0mm)



Aluminum Extrusion & Stamping Parts

Material: AL6063 / Thickness: 1.5 mm

Dimensions: 1680 x 120 mm

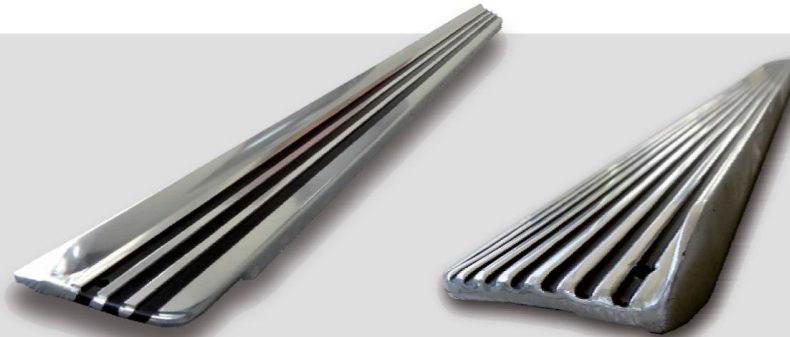
Finish: Grinding, Anodizing

Aluminum Extrusion & Stamping Parts

Material: AL6063 / Thickness: 1.5 mm

Dimensions: 1680 x 130 mm

Finish: Grinding, Anodizing, Liquid Coating



ALUMINUM EXTRUSION

- ▶ Reverse Engineering : Based on existing samples, creating 3D reverse engineering drawings.
- ▶ Aluminum Extrusion : According the 3D drawings, executing aluminum extrusion processing.
- ▶ Common used material: 1100, 5052, 5083, 6061, 6063.
- ▶ Stamping Processing : Punching, blanking, bending, coining, embossing, riveting.
- ▶ Surface treatment : Polishing, anodizing, powder coating.

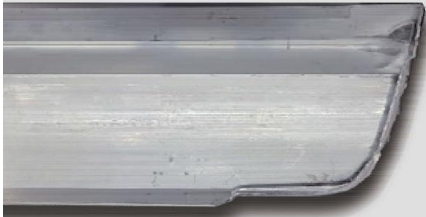


Aluminum Extrusion & Stamping Parts

Material: AL6063 / Thickness: 1.5 mm

Dimensions: 780 x 105 mm

Finish: Grinding, Anodizing, Liquid Coating



Aluminum Extrusion & Stamping Parts

Material: AL6063 / Thickness: 1.5 mm

Dimensions: 1680 x 120 mm

Finish: Grinding, Anodizing



ALUMINUM EXTRUSION

- ▶ Reverse Engineering : Based on existing samples, creating 3D reverse engineering drawings.
- ▶ Aluminum Extrusion : According the 3D drawings, executing aluminum extrusion processing.
- ▶ Common used material: 1100, 5052, 5083, 6061, 6063.
- ▶ Stamping Processing : Punching, blanking, bending, coining, embossing, riveting.
- ▶ Surface treatment : Polishing, anodizing, powder coating.

**THANK
YOU !**



Chingmass Industrial Co., Ltd.

No. 312, Sec. 2, You'an Rd., Madou Dist.,
Tainan 721013, Taiwan

T: +886-6-5705888

F: +886-6-5705862

E: info@chingmass.com

W: www.chingmass.com

