

**Digitalize Your Production  
with EMKO Elektronik**



# EMKO Elektronik A.Ş.

**EMKO**  
www.emkoelektronik.com.tr



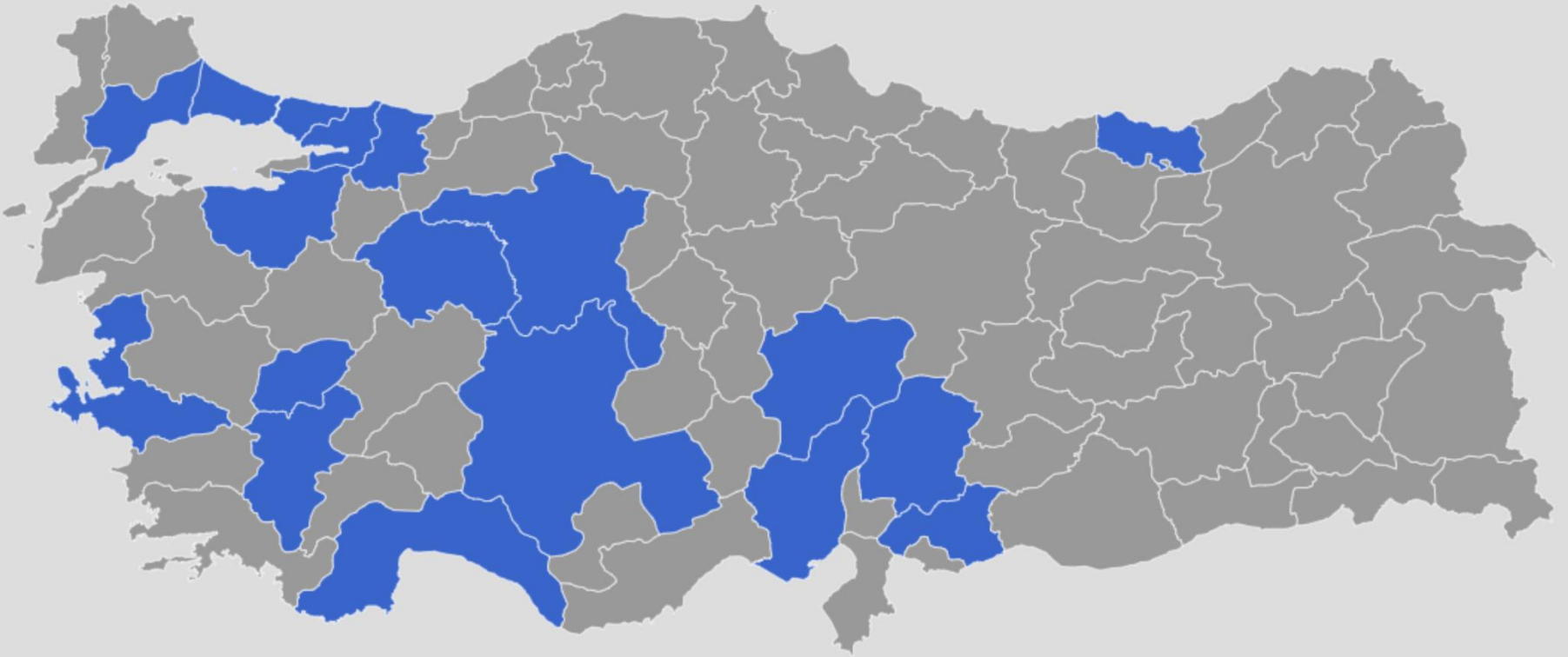




With 100% domestic capital, it has been carrying out the design, production, marketing and pre-sales and after-sales technical services of Operator Panels, PLC, Measurement Control Devices, Temperature and Humidity Sensors, Remote Monitoring Software, Generator Control Devices since 1986.



# Domestic Dealer Network



Domestic  
**34**  
Distributors







TSE-ISO-EN9001

CE Certificate

UL Certificate

EAC Certificate

**EMKO Elektronik is a World Brand**





## Technologies in Use

SMT Production

TRH Production

Sensor Production

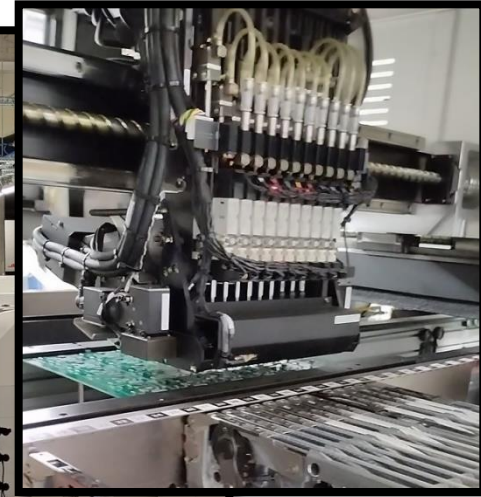
Dynamic Signboard

Test & Calibration

ERP System

## Production Department

500K pcs product/year







EMKO  
Elektronikhas been  
an R&D center  
since 2017.



# Product Groups



# Professional Operator Panels



Professional Operator Panels



# PLC and I/O Modules

YERLİ  
ÜRETİM

%100 YERLİ  
YAZILIM  
DONANIM



PLC and I/O Modules



# Measurement Control Devices



Process Indicators and Control Devices Temperature  
Control Devices Counters and Timers



# Industrial Kitchen Equipment

YERLİ  
ÜRETİM

%100 YERLİ  
YAZILIM  
DONANIM



Bakery Baking Control Devices Oven Control Devices



# Temperature and Humidity Sensors



Thermoresistances , Thermocouples , Humidity Sensors



# Poultry Automation Devices

**YERLİ  
ÜRETİM**

**%100 YERLİ  
YAZILIM  
DONANIM**



Kümes  
Otomasyon  
Cihazları



Poultry Automation and Incubation Control Devices



# Generator Control Devices

YERLİ  
ÜRETİM

%100 YERLİ  
YAZILIM  
DONANIM



Generator Control, Synchronization and Load  
Sharing Remote Monitoring Applications

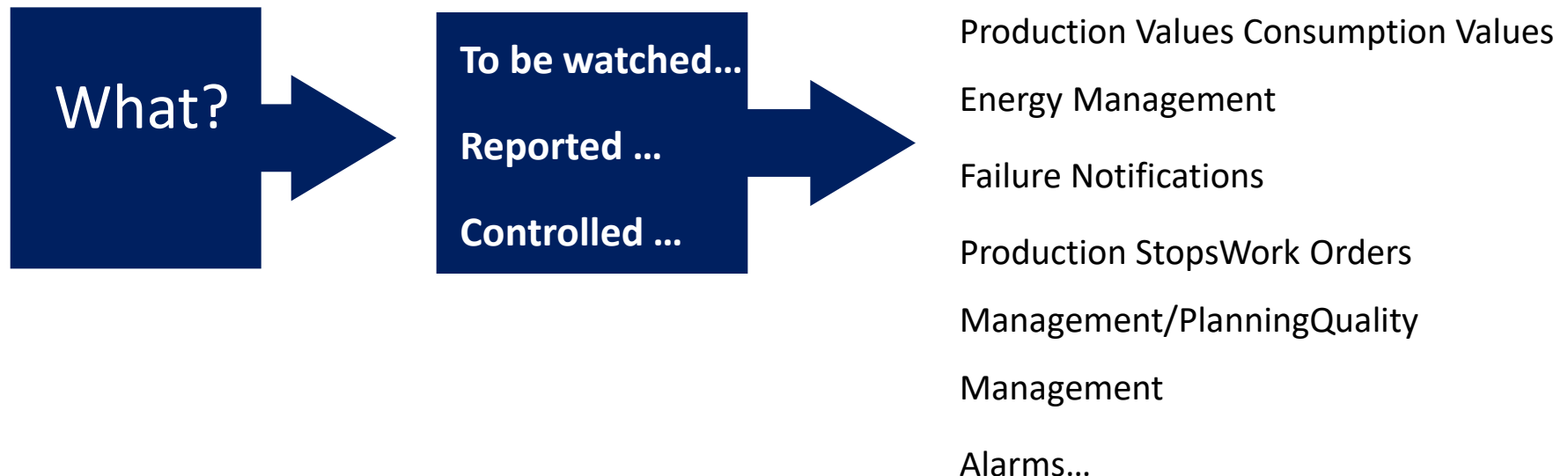


# Digital Transformation



## Digital Factory ?

It refers to the integrated operation of machines and production management systems. It is the MONITORING, REPORTING and CONTROL of production or management processes in processes instantly, locally or from anywhere in the world.



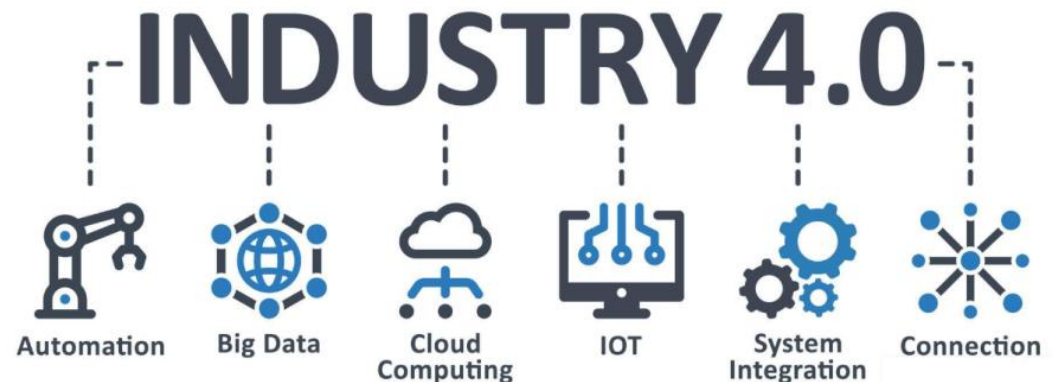


## With Digital Transformation,

Collection of all input parameters in Production, Management, Quality processes in a digital environment. In this way, by analyzing the data, KPIs and Basic Performance Indicators are obtained, qualified process management is ensured and efficiency is increased at every point.

## Purpose of Digital Transformation?

- Reducing Costs Increasing
- Performance Increasing Capacity
- Recording Processes
- Increasing Quality and Making It Stable....





# ERP and MES System Integration

In all this digitalization effort, ERP software and MES System Integration appear as an important process..



**EMKO PROOP HMI Panels IPERTU PLC and Analog Modules** Provides integration of ERP and MES systems and enables IOT transformation.



**IOT**  
Internet Of Thinks



# Digital Transformation Examples



**Proop**  
Profesyonel  
Operatör Paneli



**Proop**  
Profesyonel Operatör Paneli



Thanks to the e-mail sending feature, your process is closer to you. Thanks to the MQTT protocol, remote access to process values is facilitated. With HMI Panel; You can send alarm conditions, Process and consumption values by e-mail.



## Proop Profesyonel Operatör Paneli



Thanks to the VNC remote desktop feature, the HMI Panel screen can be viewed from a PC or Mobile over a local network or the internet. Thus, real-time monitoring, control, and reporting can be done from anywhere.



## Remote Monitoring and Control with EMKO

Generator Control Devices from anywhere in the world with EMKO Web Management



In the bank project with over 1000 branches, the controls of the branches' generators were carried out with TRANS-AMF. The data received from TRANS-AMF is monitored, managed and reported remotely with WEB Scada software. In case of alarm, the system informs the relevant units via SMS/Mail.



With this digital transformation, GENERATOR via EMKO Web Management;

GENERATOR Remote Monitoring /  
Operation,

Monitoring Network Values ,

Monitoring Generator Values,

SMS/Mail in Alarm Situations,

Fuel Level, Temperature  
Information,

Fault Status Information,

Fuel Reporting, Analysis,

Recording of processes,

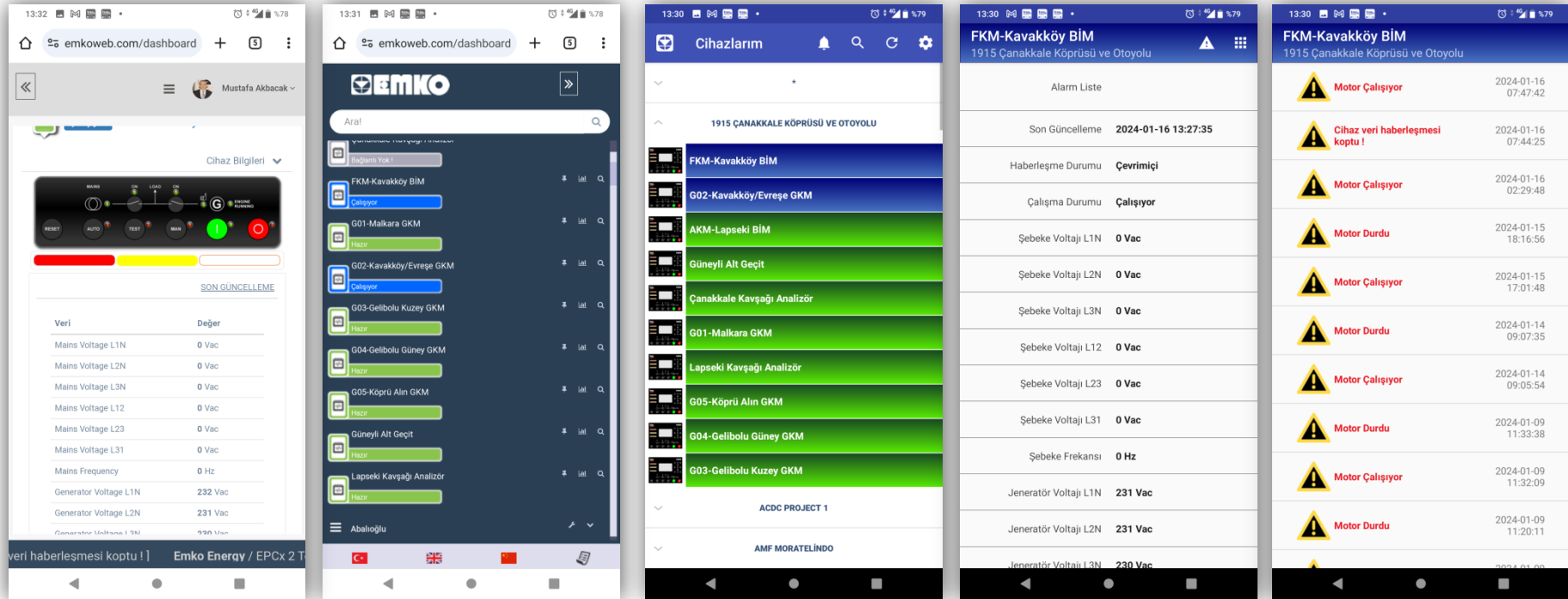
Working Hours Data

Reporting Provided.





## GENERATOR Remote Monitoring and Control- Mobile Application



Predictive Maintenance activities are carried out by analyzing the data received in alarm situations and their frequency of occurrence. In this way, the efficiency of labor and infrastructure performance can be continuously improved. For example; There may be a problem with the starter of a generator that frequently fails to start.





www.emkoelektronik.com.tr

EPC-T10 Kumes Kontrol  
İzleme Verileri



UZAK İZLEME VE  
KONTROL,  
ÇOKLU KÜMES  
GÖSTERİMİ

**EPC-T10**  
Kümes Kontrol Cihazı



EMKO Web Yönetimi ile HMI Dokunmatik  
Ekranlı Kümes Kontrolü ve izlemesi  
Bilgisayarınız'da,  
Tabletiniz'de,  
Telefonuz'da

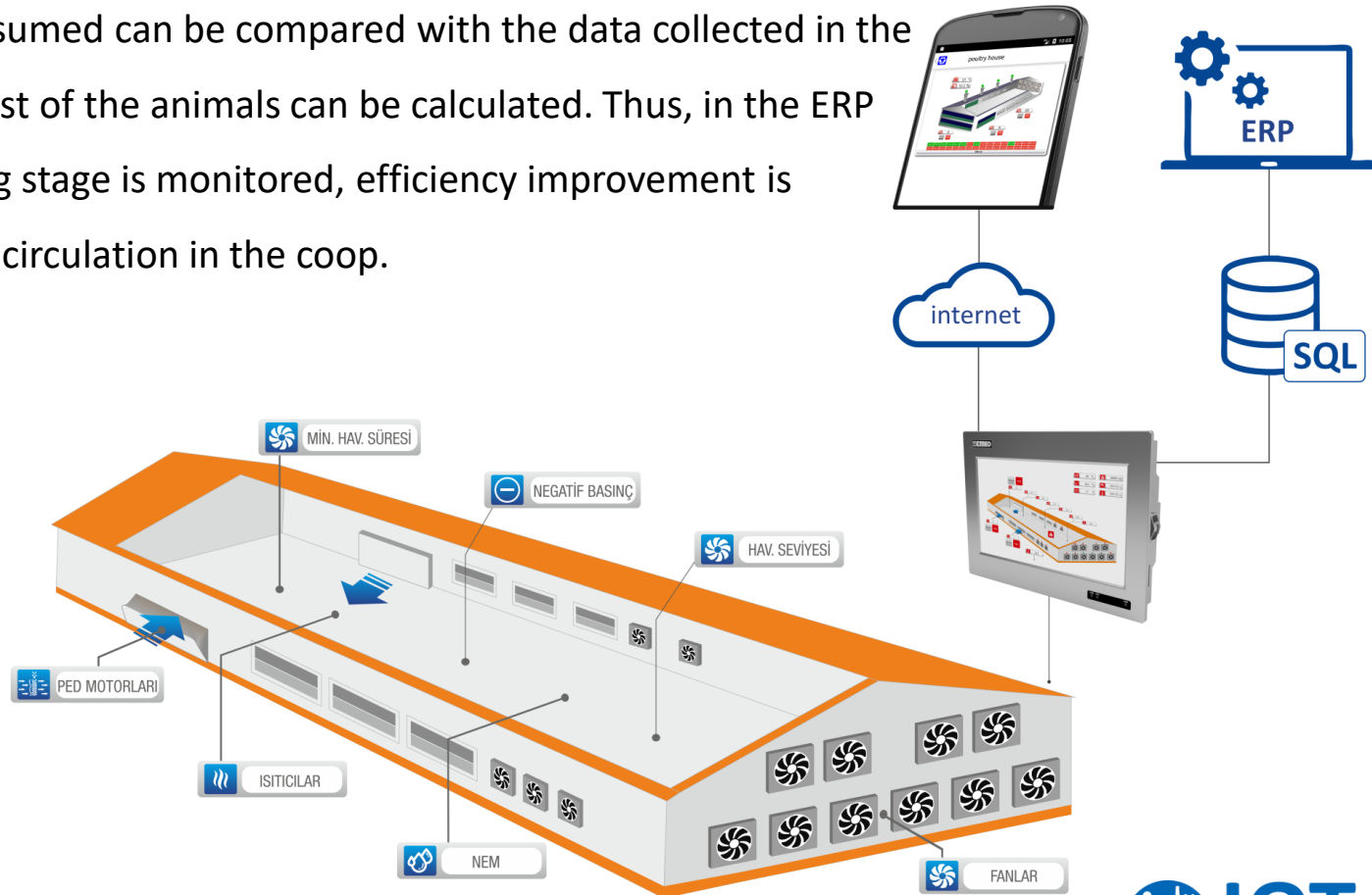


Android/IOS işletim sistemleri için  
Kümes Otomasyonu Uzak  
İzleme Uygulaması

Thanks to the EPC-T10 control device used in poultry farming and EMKO Web Management, all data and alarms received from the coop can be monitored instantly and controlled remotely. In the project we carried out with the leading company in the sector, the system informs both the caretaker and the veterinarian in case of alarms, and the collected data is used to improve efficiency.



In this application, the number of animals in the coop, their weight, the amount of feed, water and energy consumed can be compared with the data collected in the SQL database and the KG cost of the animals can be calculated. Thus, in the ERP system where each breeding stage is monitored, efficiency improvement is achieved in the next animal circulation in the coop.





With the digital transformation of the system, real-time notifications can be received with the Proop HMI - MQTT protocol, retrospective monitoring, reporting can be done from mobile and PC. In case of a problem with the Internet, alarm information is sent via SMS.



TÜKETİM



ELEKTİRİK



AYDINLATMA



AĞIRLIK



SU



YAŞ EĞRİSİ



YEMLEME



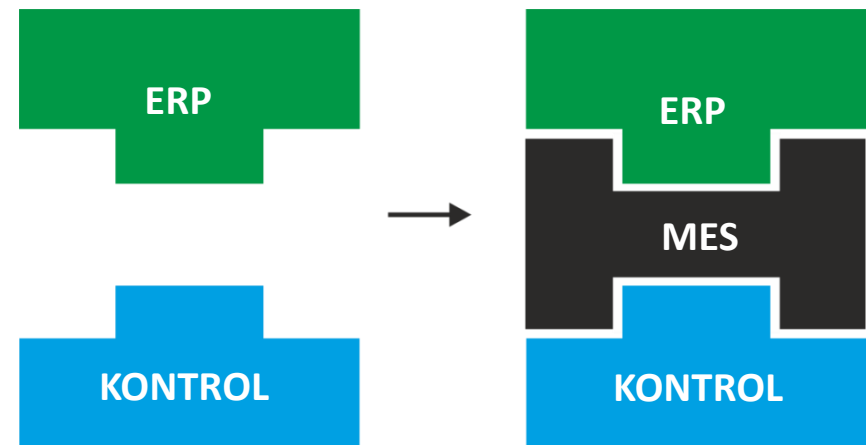
# ERP – MES System Integration



# ERP and MES System Integration

In order to realize digital transformation, ERP and MES Integration is an important step

In all this digital transformation process, EMKO HMI Panels, PLCs, Analog Modules, Measurement Control Devices and Sensors form the **HARDWARE** part of ERP software in the production area with their infrastructure compatible with MES systems in processes such as control, data collection and reporting.





# EMKO ERP-MES Integration

**Professional Operator Panels**  
**Compatible with ERP/MES Systems**



C/C++, MAKRO ve SOFT-PLC için  
**LADDER DİLLERİNDE**  
PROGRAMLAMA

BACNET MSTP, MODBUS-RTU/ASCII  
**MASTER / SLAVE**  
HABERLEŞME



SQL  
Bağlantısı



Haberleşme  
Protokolü



SMB Dosya  
Paylaşımı



VNC Uzak  
Masaüstü Özelliği





**Professional Operator Panels**  
**Compatible with ERP/MES Systems**

**INTERNAL**



**5x Digital Input 4x Digital Output**



**Barkod  
Okuyucu**



**Barkod  
Yazıcı**



**RFID  
Okuyucu**



**Klavye**



**Mouse**



**2x 4...20mA Analog Output**  
**2x 4...20mA Analog Input**





As EMKO Elektronik, we started our first digital transformation from our own factory...

With PROOP HMI Panels used in the production department and integrated with the ERP software, the test and calibration processes in production are recorded in the SQL database, and quality, production performance analysis and improvement are provided via ERP.



Not only the production system, but also the company's lighting and ventilation systems are controlled via EMKO HMI panel and IPERTU Digital and Analog modules, and all kinds of reporting can be obtained by recording consumption and working hour data in the SQL database.





# EMKO ERP-MES Integration

Proop HMI - Digital lighting system panel that can be controlled with VNC remote desktop feature...





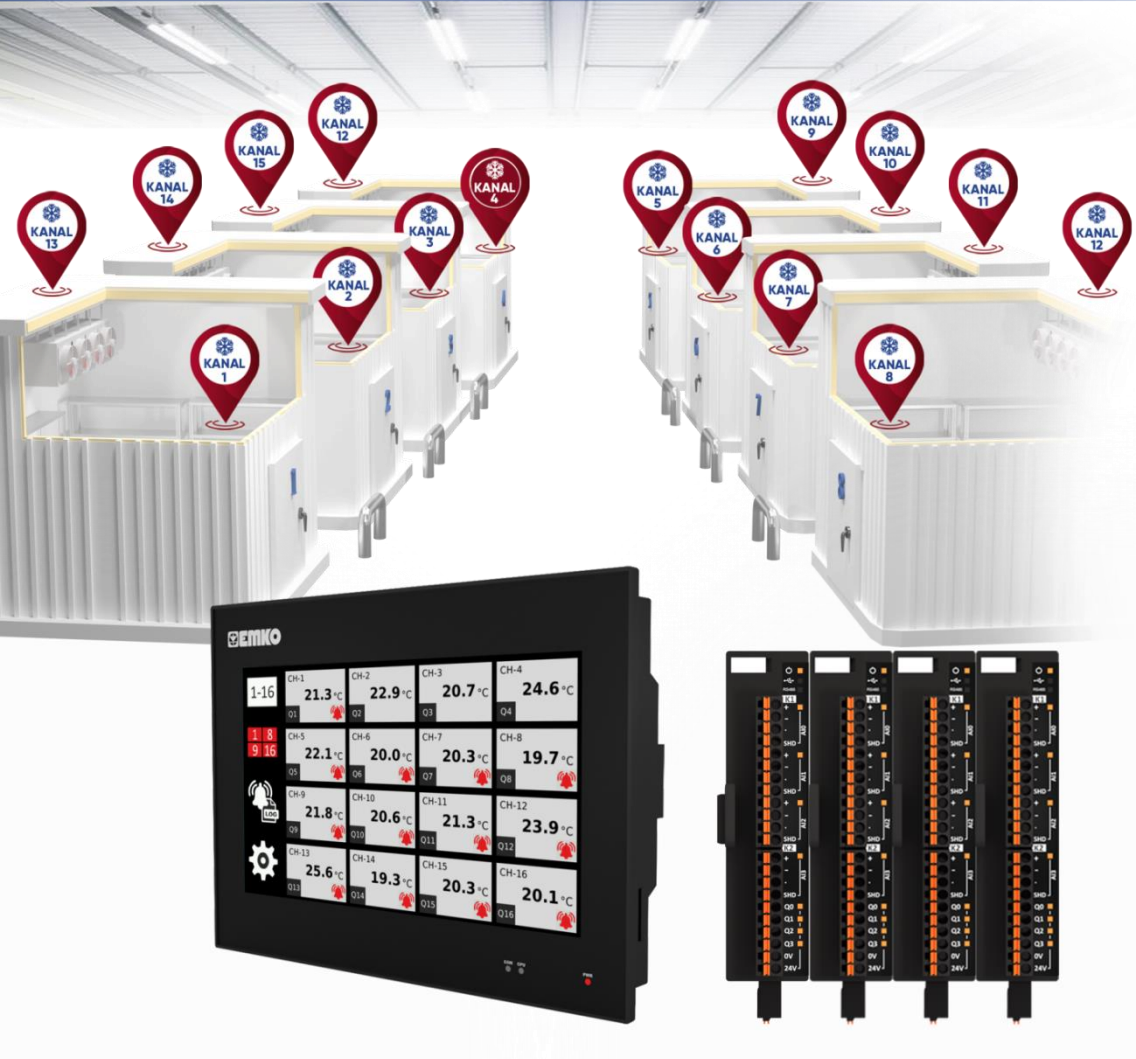


**16 Zone Humidity, Temperature Control and Monitoring HUMIDITY and TEMPERATURE control and data collection application with IPERTU Analog modules. With the ModBus TCP-IP feature of the EMKO HMI panel, remote control and real-time graphics process values can be monitored. In addition, process values, alarms, energy consumption data are recorded and reported.**

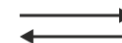




# EMKO ERP-MES Integration



All this data is recorded in the SQL database, allowing for ; Cost Analysis , Capacity Increase, Quality process management to be performed via ERP.



PROOP HMI







## Water Filling Application via IPERTU PLC;

The purpose is to perform tank level management, Demijohn disinfection, Filling processes. Production quantity information, Energy consumption information, Production line stoppages, Fault, maintenance information reporting is provided.



# EMKO ERP-MES Integration



This process works integrated with other smart production and warehouse systems with digital transformation. (IOT - communication between production units) For example; Automatic provision of information to the warehouse unit about the amount of demijohns decreasing in production. With the information received from the field, efficiency is increased in production processes and capacity management. Cost analyses are performed. An increase in quality and performance values is observed.



We design, We produce...



THANKS...

MERT YAPAREL  
EMKO Elektronik AŞ – EXPORT MANAGER