

# Smart Healthcare Solutions from Taiwan

## - iMADC Medication Management System

Enabling Intelligent Healthcare by AIoT



IOT Solutions  
Alliance



Jason Miao / [Jason.miao@imedtac.com](mailto:Jason.miao@imedtac.com)

Nicha Tantrajin / [Nicha@imedtac.com](mailto:Nicha@imedtac.com)

2023 Q4



# Company Background



## Facts of Company

- Found in 2016
- Group employee 105  
Taiwan. China. Thailand
- Major Investor

CHT / Inventec / New Kimpo / ABICO Group / Taiwan National Development Fund

Jason Miao  
Sales Director

Ken Yu  
CEO

Beren Hsieh  
Thailand Branch Manager



AUO Display Plus



行政院國家發展基金管理會  
National Development Fund, Executive Yuan

Transforming Healthcare Through AIoT

# The strength of imedtac



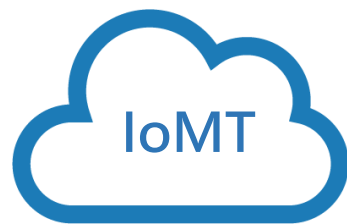
Study in-depth about the needs in hospital

## Stockholders

- ✓ Doctor
- ✓ Caregiver
- ✓ Patient

## Topics

- ✓ Improve efficiency
- ✓ Decrease human error
- ✓ Optimize operation



Have great experience with the latest IoMT technology

## IoMT application

- ✓ Epaper
- ✓ Pressure sensor
- ✓ ToF sensor
- ✓ Medical device
- ✓ AI engine
- ✓ Identification
- ✓ Robot
- ✓ RTLS, etc.



Informatization

Intelligentization

Interconnected



The smart healthcare solutions provide integrate latest IoMT technology into world-class healthcare system

- ✓ System integrate
- ✓ Software develop
- ✓ On-site optimize
- ✓ Cloud platform

# An Enabler of Intelligent Healthcare Transformation



## Smart hospital

We work closely with the caregivers in the hospital and provide our smart solutions to solve the problems and pain points that hospitals are forcing.



## Smart healthcare

Provide instant vital sign and care information to the caregiver to release their workload which will achieve the data-driven care.



## Health promotion

Leverage AIoT devices to help users manage their own health condition and achieve QoL, Quality of Life, goal.



# Imedtac WW Smart Healthcare Success Case



## Taipei Medical University Hospital

Provide: iMVS vital sign solution, iMWard smart ward solution



## National Taiwan University Hospital Hsinchu Biomedical Park Branch

Provide: iMWard smart ward solution, Epaper door information solution, smart dialysis solution



## Kaohsiung Medical University Chung-Ho Memorial Hospital

Provide: iMADC automated dispensing cabinet, smart operation platform, smart counter



## MacKay Memorial Hospital

Provide: iMRobot-S service robot



## China Medical University Hsinchu Hospital

Provide: iMWard smart ward solution, Smart room solutions



## Kaohsiung Municipal Siaogang Hospital

Provide: iMADC automated dispensing cabinet



## Taipei Municipal Wanfang Hospital

Provide: iMVS vital sign solution



## Tri-Service General Hospital

Provide: iMRobot-L logistic robot



## National Cheng Kung University Hospital

Provide: iMWard smart ward solution



## Far Eastern Memorial Hospital

Provide: iMVS vital sign solution, iMRobot-T transportation robot



## ChangHua Christian Hospital

Provide: iMVS vital sign solution, iMRobot-T transportation robot, smart counter, security management system for infant ward, smart operation platform, smart ICU



## Yuanlin Christian Hospital

Provide: iMWard smart ward solution, iMRobot-T transportation robot, smart dialysis solution, smart counter, smart operation platform, smart ICU

# Imedtac Thailand / Vietnam Smart Healthcare Success Case

## Thailand



**Thonburi Hospital. Bangkok Thailand**  
Provide : EPD iMWard. Nursing Station. Vital Sign Kiosk. ADC. ToF Patient Safety



**Samitivej Hospital Bangkok Thailand**  
Provide : Smart ICU-MDI System



**Samutprakan Hospital Samutprakan Thailand**  
Provide Vital Sign Kiosk iMVS-AIO



**Overbrook Hospital. Chiang Rai, North. Thailand**  
Provide Vital Sign Kiosk iMVS-AIO



**Bangkok Christian Hospital. Thailand**  
Provide : Vital Sign Kiosk iMVS-AIO

## Vietnam



**Shing Mark Hospital. Vietnam**  
Provide : EPD iMWard. Smart Nursing Station. Vital Sign Kiosk. ADC. ToF Patient Safety. iMQueueing



**Vietduc Hospital. Vietnam**  
Provide : Vital Sign Kiosk iMVS-AIO. iMTelehealth.



**Hoa Hao Vinmec HCM Hospital. Vietnam**  
Provide Vital Sign Kiosk iMVS-AIO



# Imedtac Malaysia Smart Healthcare Success Case

## Proposing



**ParkCity Medical Centre (PMC) ,  
Ramsay Sime Darby Group**  
-35 rooms Paediatric Ward ;  
completed Jan 2023



**Sg.Long Specialist Centre**  
Mock-up room in progress  
New ward - 14 rooms; completion Q2



**KPJ Puteri Specialist , Johor**  
Proof-of-Concept completed  
Q4 2024 - 60 rooms ward



**Thomson Medical Centre**  
Proof-of-Concept in progress  
New ward - 36 rooms

## Design In



**KPJ Damansara Specialist Hospital (DSH2)**  
Proof-of-Concept & UAT completed  
3VVIP rooms & Premium Ward  
completion Q2



**Prince Court Medical Centre**  
Mock-up room completed  
24 rooms Paediatric Ward



**Gleneagle Hospital, Penang,  
Malaysia**  
Provide : EPD.



**PPUM , Kuala Lumpur,  
Malaysia**  
Provide : iMOR-Tele



**HMI , Mahkota,  
Malaysia**  
Provide : EPD /  
Nursing Station /  
Bedside computer

# AIoT Solutions In Smart Hospital





# 6 (4+2) Category Helps Digital Healthcare Transforming

## Smart OR Solution



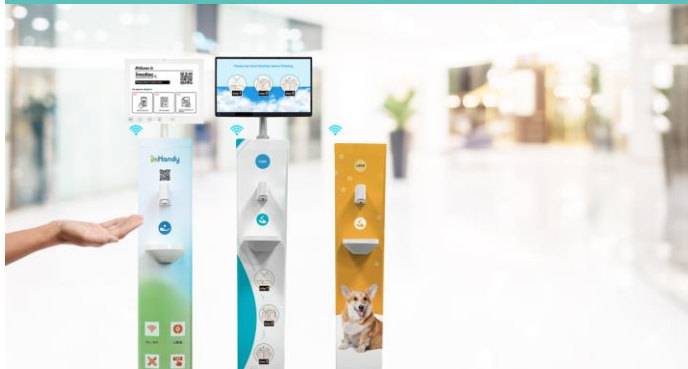
## Telehealth & Vital Collect



## Medication Mgmt. / Patient Safety



## Technology Disinfection



## Clinical (Brain Care & HIFU)

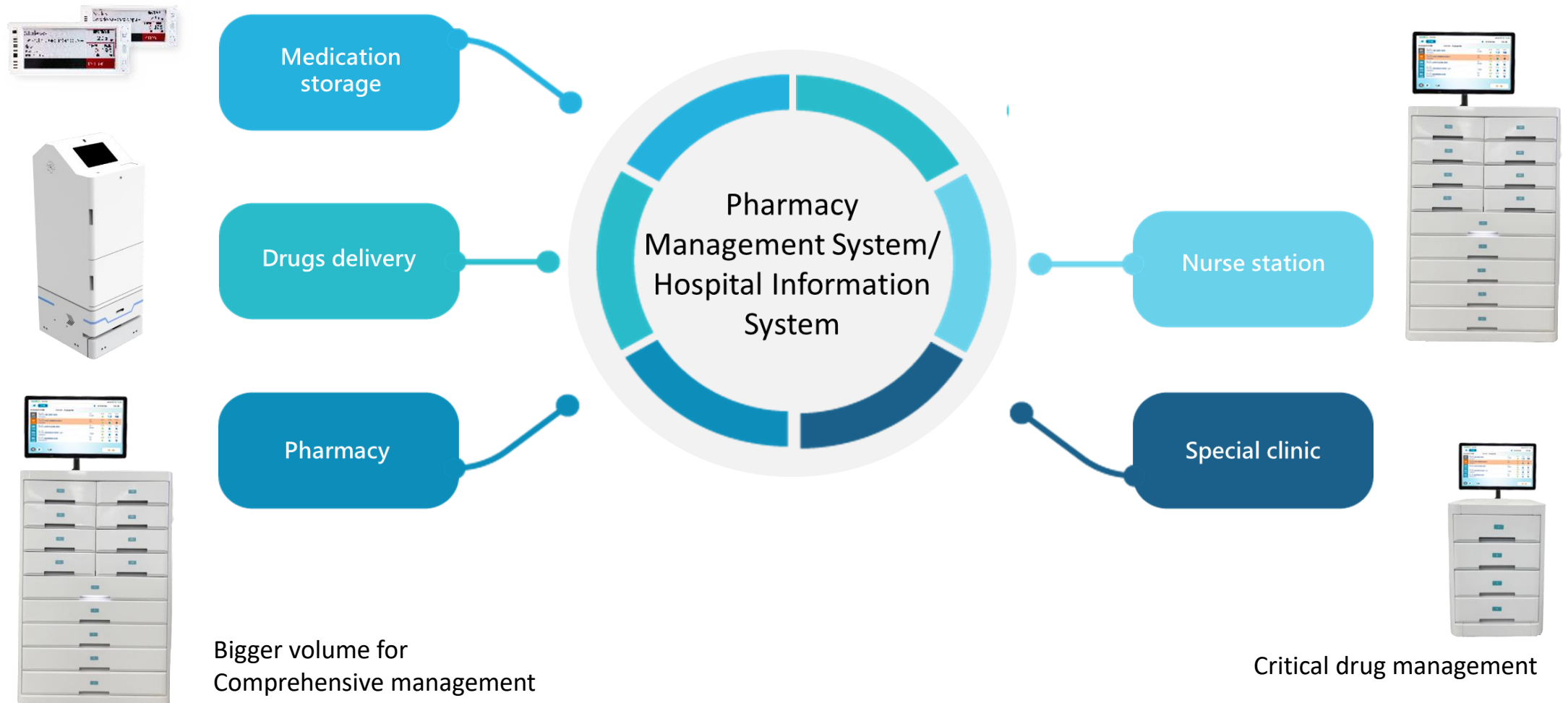


## Smart Animal Healthcare



# Medication Safety

# Smart Medication Management Solution Scenario





# iMADC – Automated Dispensing Cabinet



RFID Recognition



Face ID Recognition



Prescription scan



Medicine list



Drawer guiding



Dispensing  
record

# Medication Management - ADC

## Successful Cases

## Solution Benefits



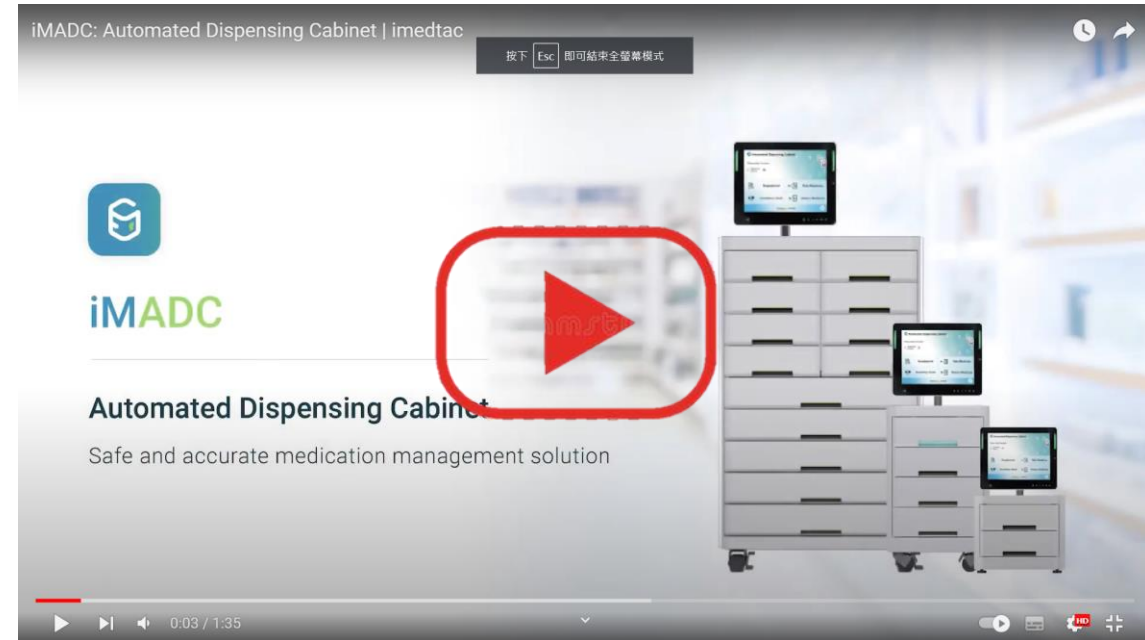
門診藥局(大)



病房(小)

Manage controlled/high-value medicines and reduce human error with automated dispensing control

- ✓ Able to integrate with EMR/HIS and synchronize with clinical orders
- ✓ Multiple authority management function: Password/ RFID badge to optimize medication security
- ✓ Real-time medicine inventory management, show medication log and statistics report



<https://www.youtube.com/watch?v=HrJmwVX2d48>

# Benefits for Smart Medication Management



## Pharmacist

- ✓ Medication safety
- ✓ Inventory management
- ✓ Replenishment notification
- ✓ Dispensing efficiency improvement
- ✓ Optimization of controlled drugs management



## Nurse

- ✓ Dispensing work flow optimization
- ✓ Workload reduction
- ✓ Care quality improvement
- ✓ Medication safety
- ✓ Timely prescription collection

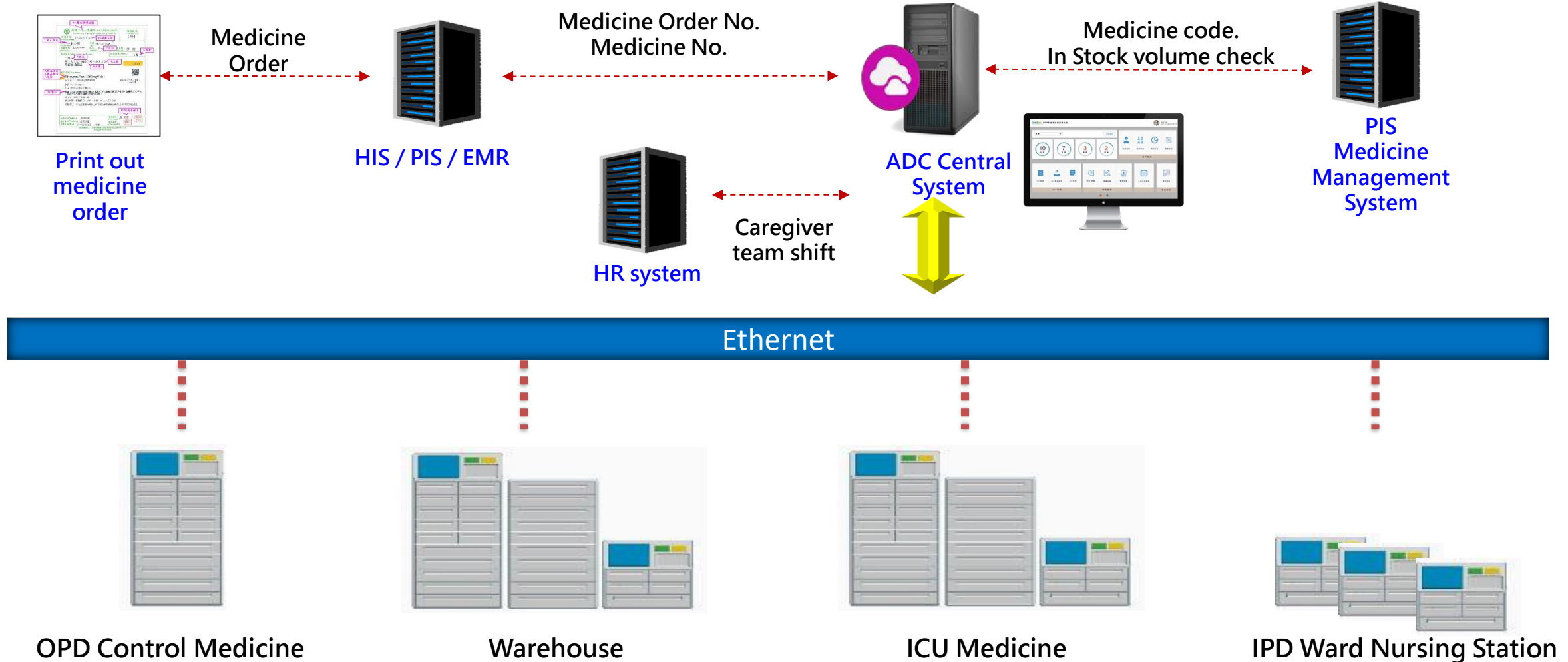


## Administrator

- ✓ Human error reduction
- ✓ Work flow optimization
- ✓ Operation refinement
- ✓ High level of compatibility



# System Structure & Scenarios



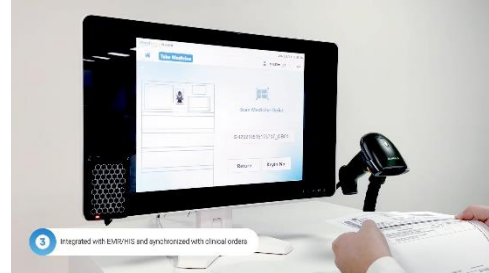
按下 Esc 即可結束全螢幕模式



# \Integrate Cutting-Edge Technology



RFID Card reading



Medicine Order Bar  
Code Reading

Scan medicine order

- OPD
- ER
- UD



Medicine Use  
Listing



Drawer unlock

- Precise medicine management, avoid human error
- Reduce work load & malpractice claim

- Realtime Inventory Status
- Reduce overtime & overdue



# Connecting with Caregiver Team Shift Schedule

**imedtac** 慧誠智醫  
人員班表管理

John Doe  
2018 / 12 / 24 10:10:30

Excel表匯入

起 2019/1/20 迄 2019/1/26

	1/20 (日)	1/21 (一)	1/22 (二)	1/23 (三)	1/24 (四)	1/25 (五)	1/26 (六)
早班 07:00 - 15:00	 王大明 江莉文 張書儀	+	 王大明 江莉文 張書儀 2 more	+	<div>早班 午班 晚班 全部</div>	+	+
午班 15:00 - 23:00	 王大明 江莉文 張書儀 +	+	+	+	+	+	+
晚班 23:00 - 07:00	+	+	+	+	+	+	+

取消 儲存

Configurable Shift Schedule



HR Database  
&  
ID Card / PW /  
Biological  
characteristics

HR Shift System

# Inventory Check after Each Use

管理 >> ADC 藥品設定 新增 ADC 對應表

John Doe 2018 / 12 / 24 10:10:30

對應表名稱 緊急用藥對應表

Excel 表匯入

抽屜藥盒配置	藥盒藥品配置	退藥盒設定	派送據點
層數			
1			
2			
3			

藥品代碼 容量 含量 劑型

OOC87 100ML 10BTL BOX

藥品名稱 單位

XENETIX 350 INJ BTL

最低庫存量 安全庫存量

8 12

刪除 儲存



搜補 工號: 127679768 林 O 華

藥種層數 全部 6 / 10

藥品代碼	藥品名稱	規格	單位	庫存	搜補
00C87	Plexin Film-coated Tablets 300mg	30'S/BOX	TAB	12	搜補
00P58	XENETIX 350 INJ	100ML, 10BTL/BOX	BTL	8	搜補
00A26	Atropine 1mg/ml inj	100'S/BOX	AMP	6	搜補
00A38	ADENOCOR INJECTION 3MG/ML	6'S/BOX	VIAL	4	搜補
00C21	Vitocal 10%	50'S/BOX	AMP	16	搜補
00D39	Lanoxin Digoxin Injection 0.5mg B.P.	0.25MG/ML, 0.5MG/AMP	AMP	9	搜補

異常通知 取消 確認

盤點 工號: 127679768 林 O 華

藥種抽屜 1L

1L-01 搜補庫存: 0

1L-02 搜補庫存: 0

1L-03 搜補庫存: 0

1L-04 搜補庫存: 0

1L-05 搜補庫存: 0

1L-06 搜補庫存: 0

1L-01 Tapamycin 達比靈素注射劑 Penicillins 4.5gm 庫存 12

庫存量異常 數量

庫存量一致 數量 12

取消 完成

## Central Management Platform

- Medicine Validity Period Management
- Record each use, dept., user / doctor & consumption rate for supplement strategy.

## ADC

# iMADC-AIO-G3.0 Specifications



	Description
Specifications	<ol style="list-style-type: none"><li>1. Dimensions: 710(W)*700(D)*1520(H)(wheels included)(mm)</li><li>2. Material: SECC</li><li>3. Cleaning: wipe with 75% alcohol or diluted bleach</li><li>4. Ports: LAN Port (RJ45) x 1, USB Port x 1</li><li>5. Power: 1 (AC input 100~240V)</li><li>6. Monitor stand: 2-section (supports 10kg of weight)</li><li>7. Large drawer size: 700(W) * 110(D) * 580(H) (mm)</li><li>8. Small drawer size: 350(W) * 110(D) * 580(H) (mm)</li><li>9. Number of drawers: 8 small ones + 5 large ones<ul style="list-style-type: none"><li>- Layers 1~4: 2 small drawers per layer</li><li>- Layers 5~9: 1 large drawer per layer</li></ul></li><li>10.Supports monitor with 1024*768 resolution</li></ol>
Highlights	<ol style="list-style-type: none"><li>1. Monitor stand: 2-section (supports 10kg of weight)</li><li>2. Extensions (optional):<ul style="list-style-type: none"><li>• Barcode Reader/Facial Recognition/Card Reader/2 Extra Drawers</li></ul></li><li>3. iMADC-AIO modules: (based on the size of the pill box)<ul style="list-style-type: none"><li>• Module A1: Large*52, Medium*18, Small*16</li><li>• Module B:1 Large*36, Medium*24, Small*40</li><li>• Module C:1 Large*44, Medium*12, Small*40</li></ul></li></ol>



# iMADC-AIO-A1



Small Box	Medium Box	Big Box	Total
16	18	52	86

(1L-04)	(1R-04)
(1L-03)	(1R-03)
(1L-02)	(1R-02)
(1L-01)	(1R-01)
(1L)	(1R)

(2L-04)	(2R-04)
(2L-03)	(2R-03)
(2L-02)	(2R-02)
(2L-01)	(2R-01)
(2L)	(2R)

(3L-04)	(3R-04)
(3L-03)	(3R-03)
(3L-02)	(3R-02)
(3L-01)	(3R-01)
(3L)	(3R)

(4L-07)	(4L-08)	(4R-07)	(4R-08)
(4L-05)	(4L-06)	(4R-05)	(4R-06)
(4L-03)	(4L-04)	(4R-03)	(4R-04)
(4L-01)	(4L-02)	(4R-01)	(4R-02)
(4L)		(4R)	

(5-08)	(5-09)	(5-10)
(5-05)	(5-06)	(5-07)
(5-03)		(5-04)
(5-01)		(5-02)
(5)		

(6-10)	(6-11)	(6-12)
(6-07)	(6-08)	(6-09)
(6-04)	(6-05)	(6-06)
(6-01)	(6-02)	(6-03)
(6)		

(7-07)	(7-08)
(7-05)	(7-06)
(7-03)	(7-04)
(7-01)	(7-02)
(7)	

(8-07)	(8-08)
(8-05)	(8-06)
(8-03)	(8-04)
(8-01)	(8-02)
(8)	

(9-07)	(9-08)
(9-05)	(9-06)
(9-03)	(9-04)
(9-01)	(9-02)
(9)	

# iMADC-AIO-B1



Small Box	Medium Box	Big Box	Total
40	24	36	100

(1L-04)	(1R-04)
(1L-03)	(1R-03)
(1L-02)	(1R-02)
(1L-01)	(1R-01)
(1L)	(1R)

(2L-04)	(2R-04)
(2L-03)	(2R-03)
(2L-02)	(2R-02)
(2L-01)	(2R-01)
(2L)	(2R)

(3L-07)	(3L-08)	(3R-07)	(3R-08)
(3L-05)	(3L-06)	(3R-05)	(3R-06)
(3L-03)	(3L-04)	(3R-03)	(3R-04)
(3L-01)	(3L-02)	(3R-01)	(3R-02)
(3L)		(3R)	

(4L-07)	(4L-08)	(4R-07)	(4R-08)
(4L-05)	(4L-06)	(4R-05)	(4R-06)
(4L-03)	(4L-04)	(4R-03)	(4R-04)
(4L-01)	(4L-02)	(4R-01)	(4R-02)
(4L)		(4R)	

(5-11)		(5-12)	
(5-09)		(5-10)	
(5-05)	(5-06)	(5-07)	(5-08)
(5-01)	(5-02)	(5-03)	(5-04)
(5)			

(6-10)	(6-11)	(6-12)
(6-07)	(6-08)	(6-09)
(6-04)	(6-05)	(6-06)
(6-01)	(6-02)	(6-03)
(6)		

(7-10)	(7-11)	(7-12)
(7-07)	(7-08)	(7-09)
(7-04)	(7-05)	(7-06)
(7-01)	(7-02)	(7-03)
(7)		

(8-07)	(8-08)
(8-05)	(8-06)
(8-03)	(8-04)
(8-01)	(8-02)
(8)	

(9-07)	(9-08)
(9-05)	(9-06)
(9-03)	(9-04)
(9-01)	(9-02)
(9)	

# iMADC-AIO-C1



Small Box	Medium Box	Big Box	Total
40	12	44	96

(1L-04)	(1R-04)
(1L-03)	(1R-03)
(1L-02)	(1R-02)
(1L-01)	(1R-01)
(1L)	(1R)

(2L-05)	(2L-06)	(2R-05)	(2R-06)
(2L-03)	(2L-04)	(2R-03)	(2R-04)
(2L-02)		(2R-02)	
(2L-01)		(2R-01)	
(2L)		(2R)	

(3L-05)	(3L-06)	(3R-05)	(3R-06)
(3L-03)	(3L-04)	(3R-03)	(3R-04)
(3L-02)		(3R-02)	
(3L-01)		(3R-01)	
(3L)		(3R)	

(4L-07)	(4L-08)	(4R-07)	(4R-08)
(4L-05)	(4L-06)	(4R-05)	(4R-06)
(4L-03)	(4L-04)	(4R-03)	(4R-04)
(4L-01)	(4L-02)	(4R-01)	(4R-02)
(4L)		(4R)	

(5-11)		(5-12)	
(5-09)		(5-10)	
(5-05)	(5-06)	(5-07)	(5-08)
(5-01)	(5-02)	(5-03)	(5-04)
(5)			

(6-10)	(6-11)	(6-12)
(6-07)	(6-08)	(6-09)
(6-04)	(6-05)	(6-06)
(6-01)	(6-02)	(6-03)
(6)		

(7-07)	(7-08)
(7-05)	(7-06)
(7-03)	(7-04)
(7-01)	(7-02)
(7)	

(8-07)	(8-08)
(8-05)	(8-06)
(8-03)	(8-04)
(8-01)	(8-02)
(8)	

(9-07)	(9-08)
(9-05)	(9-06)
(9-03)	(9-04)
(9-01)	(9-02)
(9)	



# iMADC\_Medication Box Size



Small Box  
(W)130 \* (D)80 \* (H)75 mm



Medium Box  
(W)180 \* (D)80 \* (H)75 mm



Big Box  
(W)280 \* (D)80 \* (H)75 mm



Small Drawer  
(W)350 \* (D)110 \* (H)580 mm



Big Drawer  
(W)700 \* (D)110 \* (H)580 mm

# iMADC-DKP-G1.0 Specifications

iMADC-DKP\_G1.0



	Description
Specifications	<ol style="list-style-type: none"><li>1. Dimensions: 420(W)*600(D)*350(H) (mm)</li><li>2. Material: SECC</li><li>3. Cleaning: wipe with 75% alcohol or diluted bleach</li><li>4. Ports: LAN Port (RJ45) x 1, USB Port x 1</li><li>5. Power: 1 (AC input 100~240V)</li><li>6. Monitor stand: 2-section (supports 10kg of weight)</li><li>7. Small drawer size: 350(W) * 110(D) * 580(H) (mm)</li><li>8. Number of drawers: 2 small ones</li><li>9. Supports monitor with 1024*768 resolution</li></ol>
Highlights	<ol style="list-style-type: none"><li>1. Monitor stand: 2-section (supports 10kg of weight)</li><li>2. Extensions (optional):<ul style="list-style-type: none"><li>• Barcode Reader/Facial Recognition/Card Reader/2 Extra Drawers</li></ul></li><li>3. iMADC-DKP modules: (based on the size of the pill box)<ul style="list-style-type: none"><li>• Module A: Large*6</li><li>• Module B: Large*3, Small*6</li><li>• Module C: Small*12</li></ul></li></ol>

# Drawer Partitions



- **Small Drawer**
  - 600mm (D) x 400mm (W)
  - Locks the drawer only
  - Flexibility in choosing the combination of partitions

(1-03)	(2-03)
(1-02)	(2-02)
(1-01)	(2-01)
<b>(1)                      (2)</b>	

Small Pill Box	Large Pill Box	Total
0	6	6

**Mode-A**

(1-05)	(1-06)	(2-03)
(1-03)	(1-04)	(2-02)
(1-01)	(1-02)	(2-01)
<b>(1)</b>		<b>(2)</b>

Small Pill Box	Large Pill Box	Total
6	3	9

**Mode-B**

(1-05)	(1-06)	(2-05)	(2-06)
(1-03)	(1-04)	(2-03)	(2-04)
(1-01)	(1-02)	(2-01)	(2-02)
<b>(1)</b>		<b>(2)</b>	

Small Pill Box	Large Pill Box	Total
12	0	12

**Mode-C**

# iMADC-DKP-L\_G1.0 Specifications



Pharmacy Department

## Application

### Function Description

1. Double control user authority : RFID card reading. facial recognition
2. Medicine Order : monitor check list. medicine with picture comparison. LASA Alarm
3. Medicine Safety : medicine order barcode scan. correspond drawer and box unlock.
4. Management Function : expiration date notice. Inventory review.

## Qualitative benefit

1. Precision medicine use management.
2. Avoid wrong medicine never event.
3. Reduce caregiver loading.
4. Realtime inventory control.
5. Reduce repeatedly entering quarantine area to reduce infection risk.
6. Decrease **50%** medication time
7. Decrease **70 %** withdrawal time
8. More than **100%** accuracy
9. Only takes **1~3 minutes** to do the restriction drug check during the nursing shift



# iMADC - Success Story



## Location

- Kaohsiung Municipal Siaogang Hospital, Taiwan - Pharmacy Department



## Application

### Function Description

Double control user authority : RFID card reading. facial recognition

Medicine Order : monitor check list. medicine with picture comparison. LASA Alarm

Medicine Safety : medicine order barcode scan. correspond drawer and box unlock.

Management Function : expiration date notice. Inventory review.



## Benefit

- Precision medicine use management.
- Avoid wrong medicine never event.
- Reduce caregiver loading.
- Realtime inventory control.
- Reduce repeatedly entering quarantine area to reduce infection risk.

# iMADC - Success Story



## Location

- Lin Shin Hospital, Taiwan - OPD / IPD Pharmacy Department



## Application

### Function Description

Double control user authority : RFID card reading. facial recognition

Medicine Order : monitor check list. medicine with picture comparison. LASA Alarm

Medicine Safety : medicine order barcode scan. correspond drawer and box unlock.

Management Function : expiration date notice. Inventory review.



## Benefit

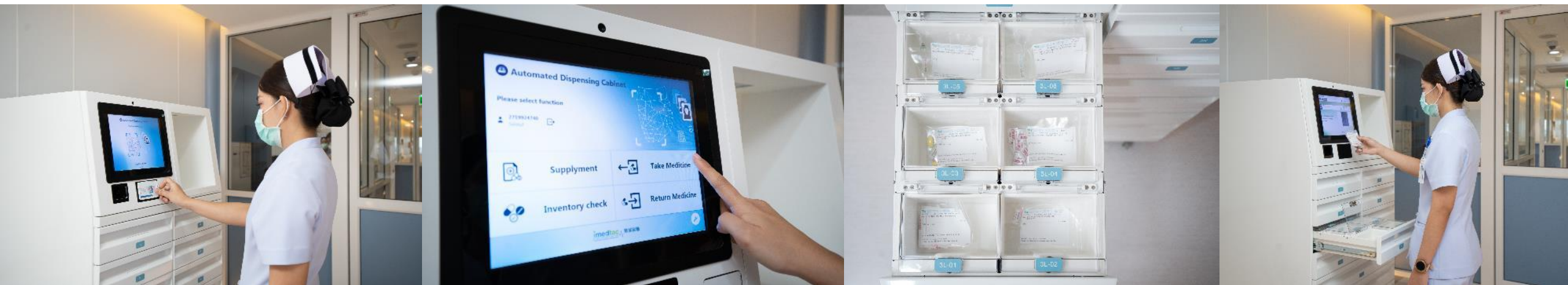
- Precision medicine use management.
- Avoid wrong medicine never event.
- Reduce caregiver loading.
- Realtime inventory control.
- Reduce repeatedly entering quarantine area to reduce infection risk.



# Success Case



- Hospital: Thonburi Hospital (Thailand)
- Scenario: Covid-19 Quarantine Ward
- Application: Manages Controlled/High-value Medicine

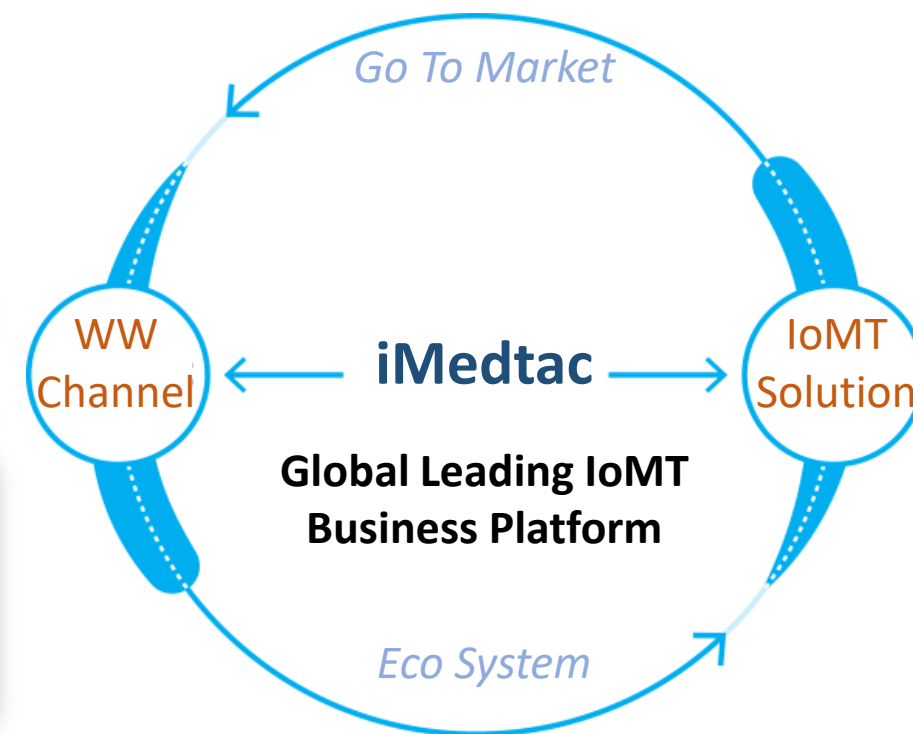




# Mission / Offering & Business Model

## "Transforming Healthcare Through IoMT".

iMedtac focusing on building the next generation of integrated care platform with the newest technology of the Internet of Medical Things (IoMT). So the doctors, nurses and patients can use cloud service platform to provide the best quality of comprehensive care and instant multi-party communication.





# Our successful case

## • Taiwan

- National Taiwan University Hospital
- Taipei Veterans General Hospital
- Taichung Veterans General Hospital
- National Cheng Kung University Hospital
- Taipei Medical University Hospital
- Changhua Christian Hospital
- National Health Research Institutes
- China Medical University Hospital
- Yuanlin Christian Hospital
- Cheng Hsin General Hospital
- Kaohsiung Municipal Siaogang Hospital
- Yuanpei University of Medical Technology
- Lukang Christian Hospital
- Po Cheng International Hospital
- Calo Psychiatric Hospital
- Hansheng Obs-Gynb Clinic
- Shui-Mu International Co., Ltd. (A.S.O)
- .....

## ■ China

- The Second Affiliated Hospital Zhejiang University School of Medicine
- Suzhou BenQ Hospital
- Nanjing BenQ Hospital
- Zhebei Mingzhou Hospital
- Shanghai Jing'an District Central Hospital
- .....

## ■ Worldwide

- MD Healthcare Co., Ltd. Thailand
- Bangkok Christian Hospital Thailand
- Overbrook Hospital Thailand
- Thailand Hospital Group
- eDoctor Vietnam
- Vietnam ShingMark Hospital
- Thailand of Bangkok, Samitivej Hospital ( Intel cooperation project under developing )
- Vietnam Viet Duc Hospital ( Intel cooperation project under developing )
- Qatar HMC Hospital ( Intel cooperation project under developing )

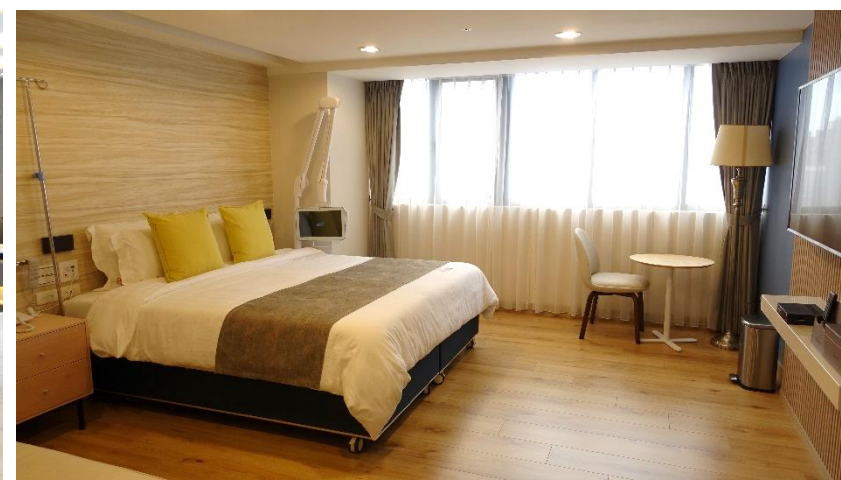
# Smart hospital development project share



Ward environment control



Broadcasting and queuing



Smart ward



Reception robot



Post-acute-care platform



Smart Vital Sign Station

*Thank  
You*

