

Pioneering EV Therapeutics — Creating the Future of Medicine



EXP01 (Dermatology: Atopic Dermatitis)

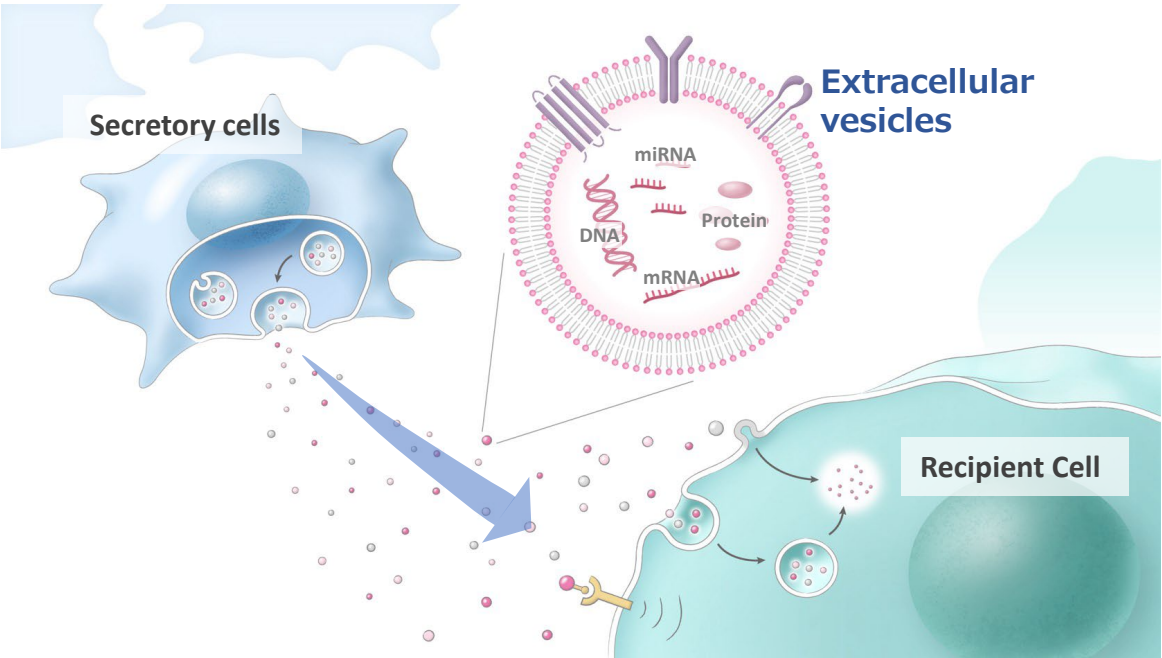
EXORPHIA, INC.

1. Company Overview

Japan’s pioneer in EV drug discovery, advancing safe, high-quality biopharmaceuticals.

Mission: Create the future of medicine with advanced EV technologies.

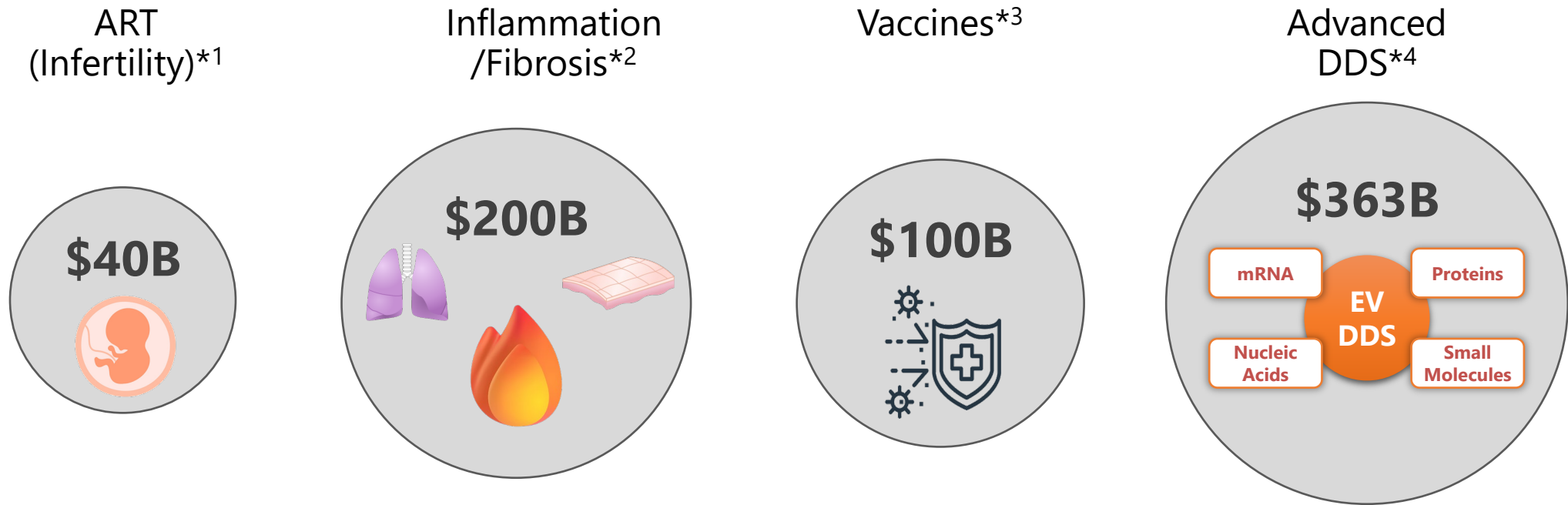
EVs are natural carriers that deliver cellular components.



Founded	2019
HQ	Tokyo to date
Capital Raised	\$12M
Major Shareholders	<div>    D3 LLC Discovery Development Deployment </div> <div>  </div> <div>  共立ホールディングス </div>
Team	20 (R&D-centric)
University Partners	<div>  東京大学 THE UNIVERSITY OF TOKYO </div> <div>  Institute of SCIENCE TOKYO </div> <div>  三重大学 MIE UNIVERSITY </div>

2. Market Opportunities

EVs address sizable needs in **infertility, inflammatory disease, and vaccines/DDS.**

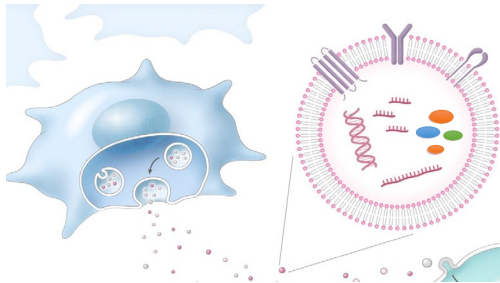


*¹ Assisted Reproductive Technology Market Size & Share Analysis - Growth Trends & Forecasts (2025 - 2030), Mordor Intelligence Research & Advisory. (2025 , June).
 *² Inflammation & fibrosis drugs (combined): Anti-inflammatory, USD 196.81 B by 2031 (Straits Research); PLUS Antifibrotic, USD 7.62 B by 2033 (Verified Market Reports)
 *³ Vaccine market: projected to reach approx. USD 100 B by 2030 (WHO estimate)
 *⁴ Advanced DDS: USD 362.77 B by 2030 (Mordor Intelligence, "Advanced Drug Delivery Systems Market Size & Share," June 2025)

3. Two Core EV-Based Technologies

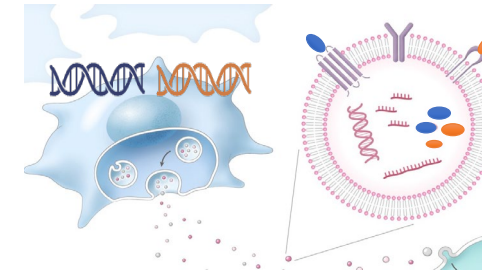
Prime-EV™

- ✓ **Highly purified** components derived from MSCs.
- ✓ Therapeutic **efficacy enhanced** by cell pre-conditioning technology.
- ✓ **Key components are established as QC markers.***1



Engineered EV

- ✓ **Cargo-loading technology** enabling efficient protein loading.*2
- ✓ Broad applicability to vaccines and DDS
- ✓ **Strong exclusivity** vs competitors, supported by granted patents in Japan and the U.S.*3



Advanced CMC

- ✓ High-accuracy potency prediction/consistency from >1,000 lots.
- ✓ ISO standardization contribution for medical EVs as a working-group member.

Enabling Development Across Multiple Applications

4. Pipeline Overview

Balanced portfolio: **Near-term revenue** (EXP02), clinical-ready **Prime-EV** (EXP01), and **first-in-class engineered EV** vaccine (EXP03).

Asset	Target Disease	Research	Preclinical	Clinical	Marketing	Note
EXP02: IVF Additive <div>Naïve</div>	Infertility	<div></div>		2026 Japan	2028 Japan 2029 Global	<ul style="list-style-type: none"> Improves high-grade blastocyst yield; Japan-first→global.
EXP01: Anti-inflammatory /Antifibrotic <div>Naïve</div>	Pulmonary (IPF/ARDS)	<div></div>				<ul style="list-style-type: none"> Balanced efficacy and safety to overcome current therapy gaps.
	Dermatology (AD)	<div></div>				<ul style="list-style-type: none"> Topical—inflammation control + barrier rebuild.
EXP03: Engineered EV Vaccine <div>Engineered</div>	Respiratory Infectious Diseases	<div></div>				<ul style="list-style-type: none"> Intranasal multivalent vaccine. Engineered EV Lead Program.
<div>Engineered</div> Indication Expansion	①EV-based cancer vaccine. ②Nucleic-acid delivery EVs with enhanced CNS penetration. ③Immune-tolerance–inducing EVs for autoimmune diseases (preliminary data in hand).					

5. EXP01-Dermatology (Atopic Dermatitis)

Naïve



A new topical- shifting care from “**firefighting**” to prevention for 200M+ AD patient.

Product : A topical that **suppresses inflammation** and **rebuilds the skin barrier**.

Positioning :

- **Moderate AD:** Long-term alternative to **TCS/TCI**.
- **Severe AD:** Add-on to **biologics/JAK inhibitors**.

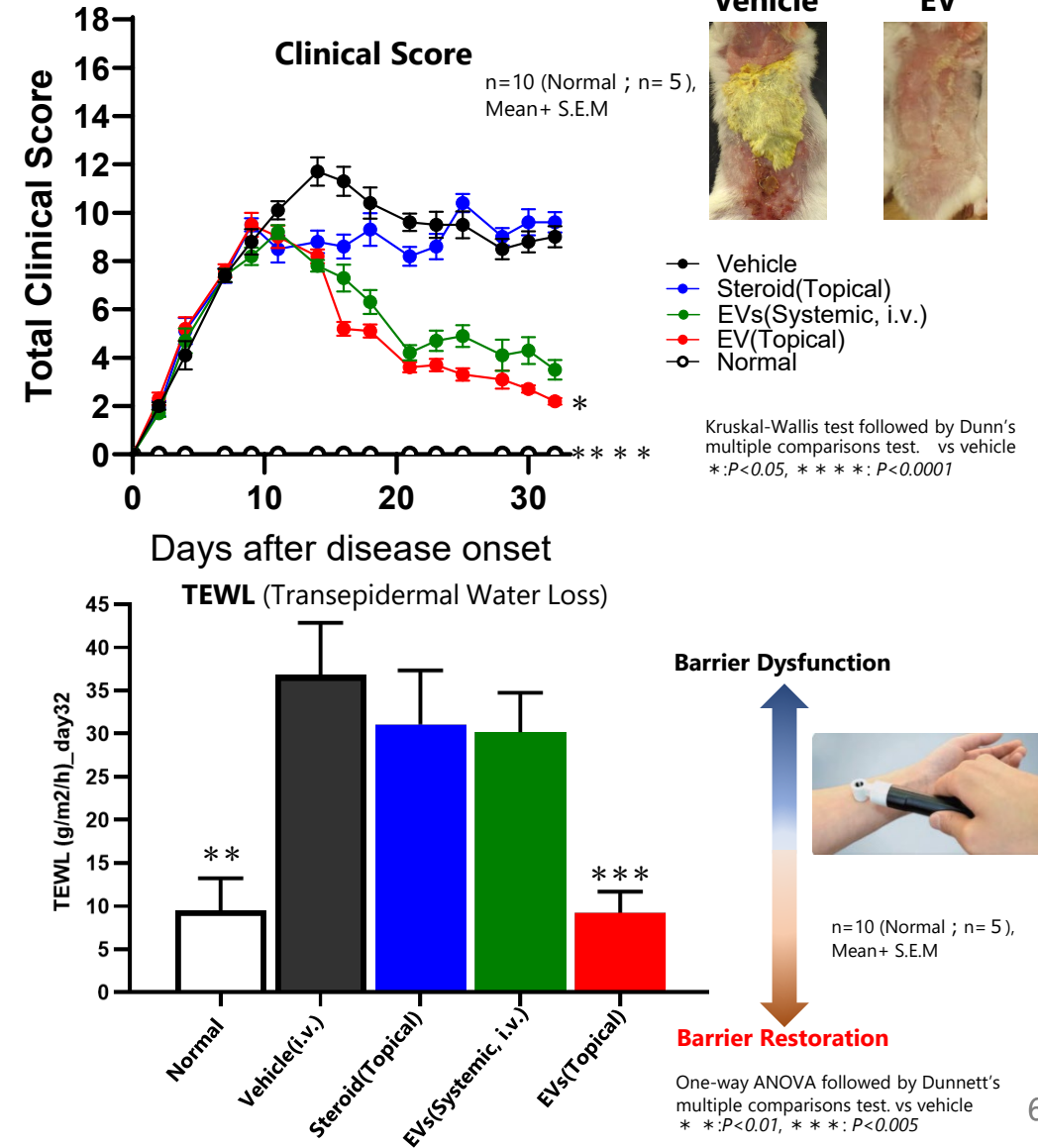
In vivo efficacy :

- ✓ **78% improvement** in clinical score; **topical EV outperformed steroid**.
- ✓ **TEWL** restored close to baseline, demonstrating **barrier repair**.

Safety : No weight loss or thymic atrophy with chronic dosing.

IP & differentiation : **Patent filed**^{*1}. First-in-class barrier-rebuilding topical; low immunosuppression risk.

Development plan / Exit : Phase 1/2a start in 2028.



*1: Patent-pending 2025-110365

6. Our team with diverse expertise essential for drug discovery



**CEO, Founder
Koji Kuchiishi**

“extensive bio-venture management experience and global contacts”



**Head of Drug Discovery, Cofounder
Izumi Kaneko, PhD**

“extensive experience in drug discovery”



**Head of Business Development
Junichi IMOTO, PhD MBA**

“strengths in business development leveraging drug discovery research experience”



**Head of CMC Development
Kenichi TAMURA, MBA**

“an expert in stem cell and designer cell development with 10+ years in R&D and regulatory development.”



**Head of Clinical Development
Chikako YAMAUCHI, PhD**

“with over 15 years of experience in clinical development at a global pharma company”



**EV engineering, Pharmacology
T. Yonekura Ph.D.**

“strengths in molecular biology and drug discovery research.”



Closing

- **EVs to tackle infertility, inflammatory disease, and infectious disease.**
- **Near-term revenue:** consumables (EXP02).
Long-term growth: out-licensing & DDS tech licensing.