



Relax. It's an Altrex.

We are a part of the



family

FRÉNÉHARD & MICHAUX supports professionals in their working lives by offering quality products and services which meet their needs for working at height safety solutions, as well as roofing and fixing accessories.



F&M history

1889

Creation of the **MICHAUX'S** workshop, a French family business. First French manufacturer of roofing accessories.

1922

Start of the production « Gutters brackets ».
Creation of **FRÉNEHARD & MICHAUX**.

1998

Creation of the activity « Fall Protection ».

2003

Creation of the brand **SECURIGARD**

2007

Integration of **FMS RINGUE**, specialized in scaffolding rental in France.

2016

Integration of **TUBESCA-COMABI, ARTUB, SKYWORKS & TENDO**

2018

Integration of **SYAM**, a French company specialized in manufacturing, selling & training for personal protection equipment.

2020

Integration of **MA ESTRUCTURAS**, specialized in the rental business for scaffolds in Spain.

2021

Integration of **GAMESYSTEM**, specialized in manufacturing and implementing customised engineering solutions for industrial maintenance.

2022

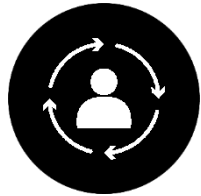
Integration of **ALTREX**, Dutch leader in manufacturing and selling of access equipment, with subsidiaries located in Belgium and Spain.

- 24 sites in Europe
- More than 1,200 employees
- A consolidated turnover of € 300M
- Sales presence in more than 70 countries

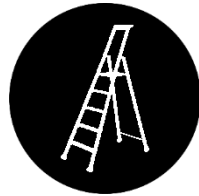


Our ambitions

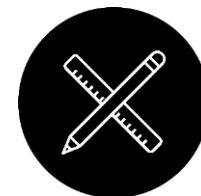
- To build a value chain around access and protection for work at height.
- To become a leading European player on this market segment.
- To develop our offer of roofing and fixing accessories.



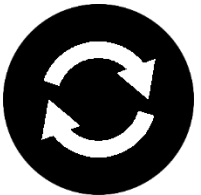
Reinforce each core business for all companies.



Capitalize on our historical brands to gain new market shares.



Jointly invest in R&D to improve and expand our offer.

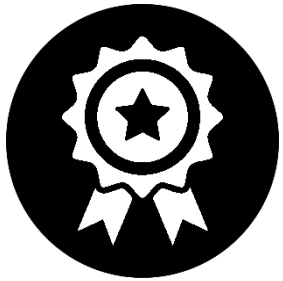


Create synergies between our companies.



Grow in industry and construction markets.

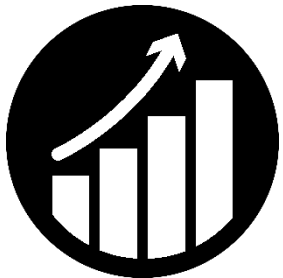
Our missions



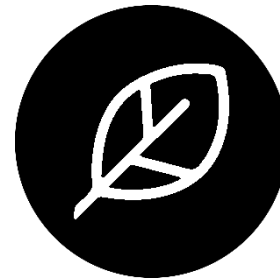
Serve our professional customers with high quality products.



Offer a strong and long-lasting working environment for our employees.



Provide sustainability for our investments.



Evolve in an eco-friendly environment.

Our values



Listen

At Frénéhard & Michaux, we take the time to listen to our customers, to understand their expectations so that we can design tomorrow's products and services for them.

Always and sincerely listening to our employees and colleagues forms the foundation for sound and successful work.



Commit

At Frénéhard & Michaux, respecting commitments is fundamental for all.

We encourage an empowerment and initiative-focused culture which is combined with a duty of honouring commitments made, both between employees and with clients and partners.



Innovate

At Frénéhard & Michaux, we work closely with our clients and our environment to improve our products and processes.

Encouraging people to take initiative and participating in inward reflection, both on a Group level and individually, to develop new ideas.



Protect

At Frénéhard & Michaux we prioritise quality to guarantee processes and products that ensure user safety and the longevity of constructions.

We give absolute priority to the health and safety of our employees.



Rise

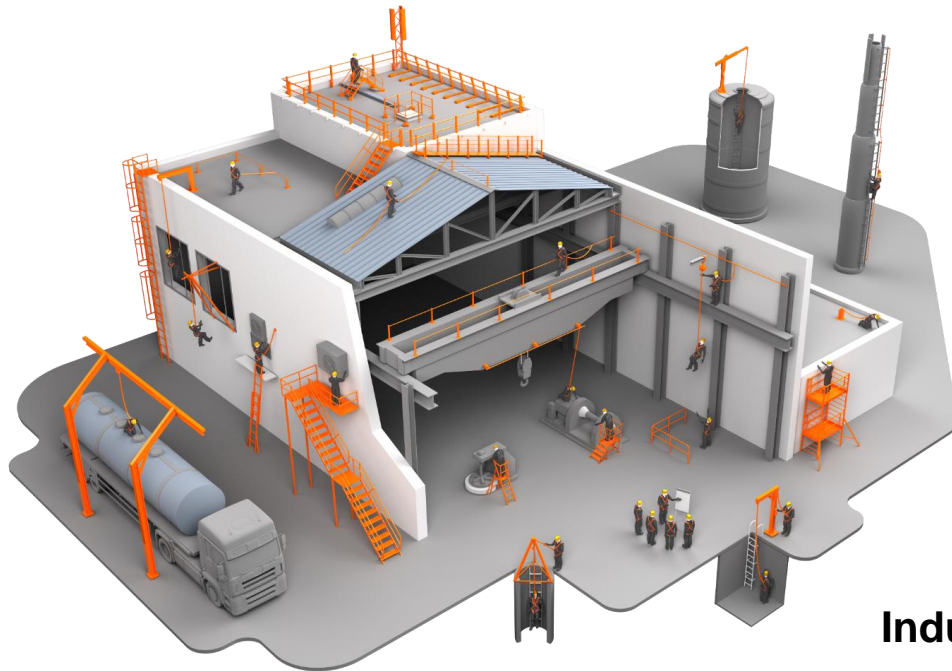
We believe in our employees at Frénéhard & Michaux. Supporting personal development, skill-building, positive behaviours and teamwork are all key parts of our culture.

We outwardly share this pride by showcasing our brands, our image, our production sites and the people who bring them to life.

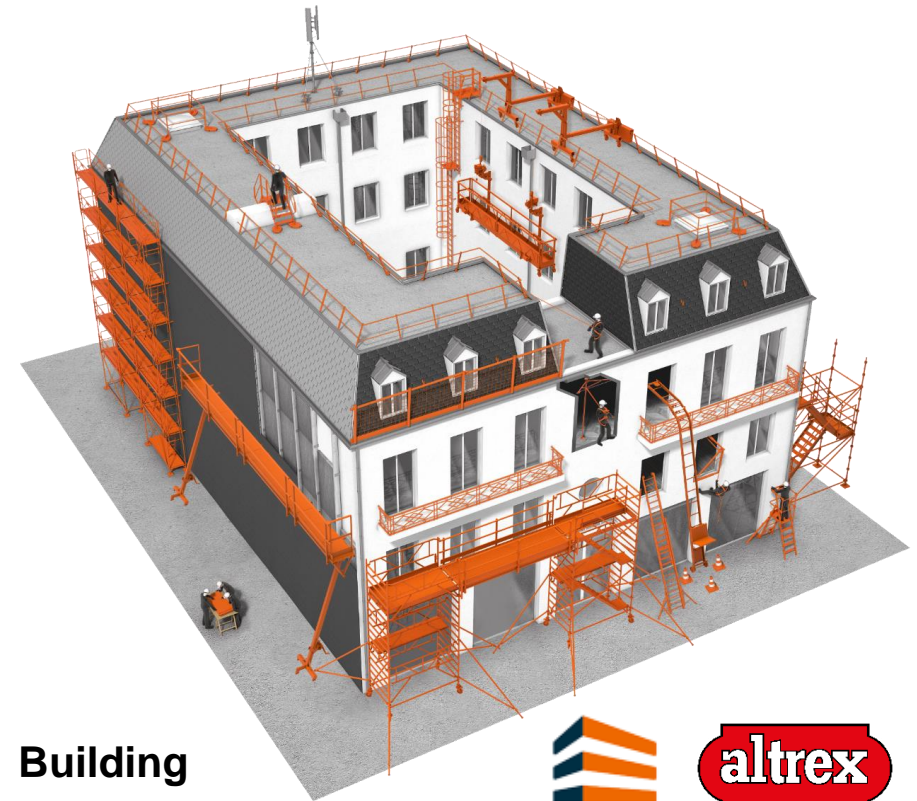
Trust at Height®

We are all part of the same Frénéhard & Michaux family. In this family, we all share the same approach of height: scaffolding and ladders, collective and personal fall protection, roofing and fixing accessories.

Safety in working at height is the prime focus of our respective activities and our common denominator.



Industry



Building



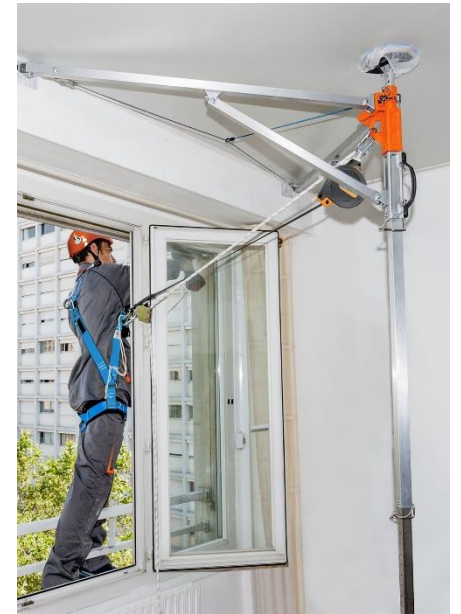
Strong leading brands

Our brands such as Tubesca, Comabi, Gamesystem, Altrex, Frénéhard, Tendo are well known in Europe and hold leading positions in their markets.



Innovation

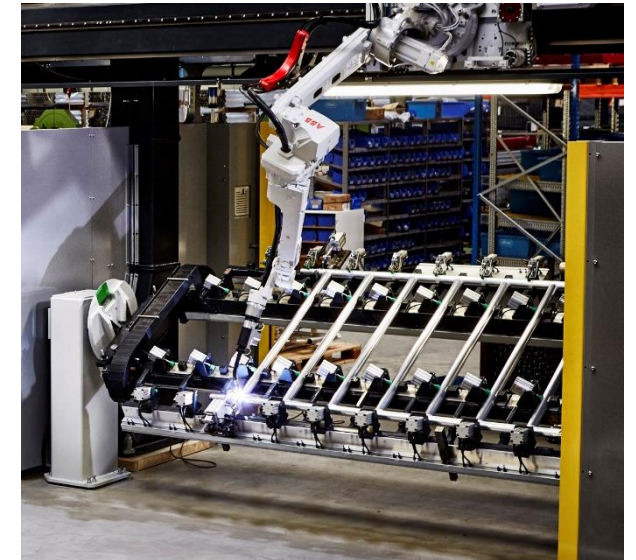
The Frénéhard & Michaux Group puts innovation at the heart of its products and services thanks to a collective mindset which regards all our employees and partners.



Modern production

All our factories have an optimal level of quality and productivity thanks to modern production capacities which are constantly evolving.

- Trained and experienced teams that maintain industrial processes.
- Specially designed machines co-developed between our departments and the manufacturers.



Quality

All our factories are ISO 9001 certified, which attests to the conformity and effectiveness of our customer management system in meeting the regulatory and normative requirements for our products and our organization.

This certification meets our desire for transparency towards our customers and partners.

It is an attestation of the conscientious work of all our employees and is a guarantee of safety for our users.



Safety

Managing the safety of our employees in our companies is a priority and part of our DNA. How could we care about the safety of the users of our products if we didn't care about the safety and health of our employees at work?

Our integrated test laboratories ensure that our products comply with the applicable standards and regulations in force in each country.



70 years of experience



CSR



Products



People



Production

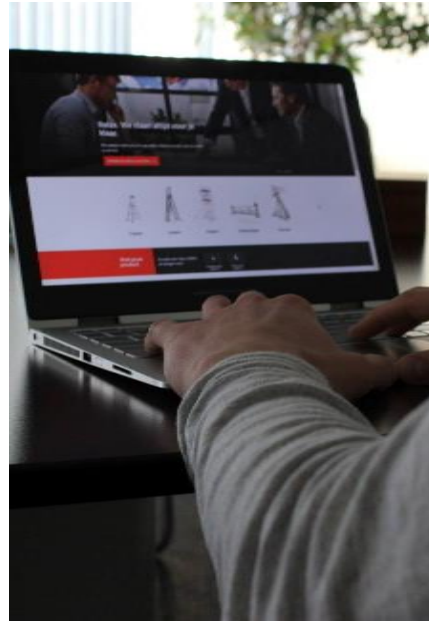
Our customer segments



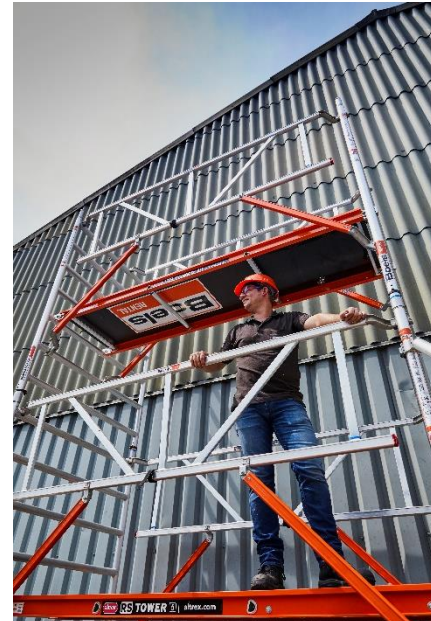
Retail DIY



Retail Professional



Online



Rental



End users

International network



Production and logistic



10.100 m²

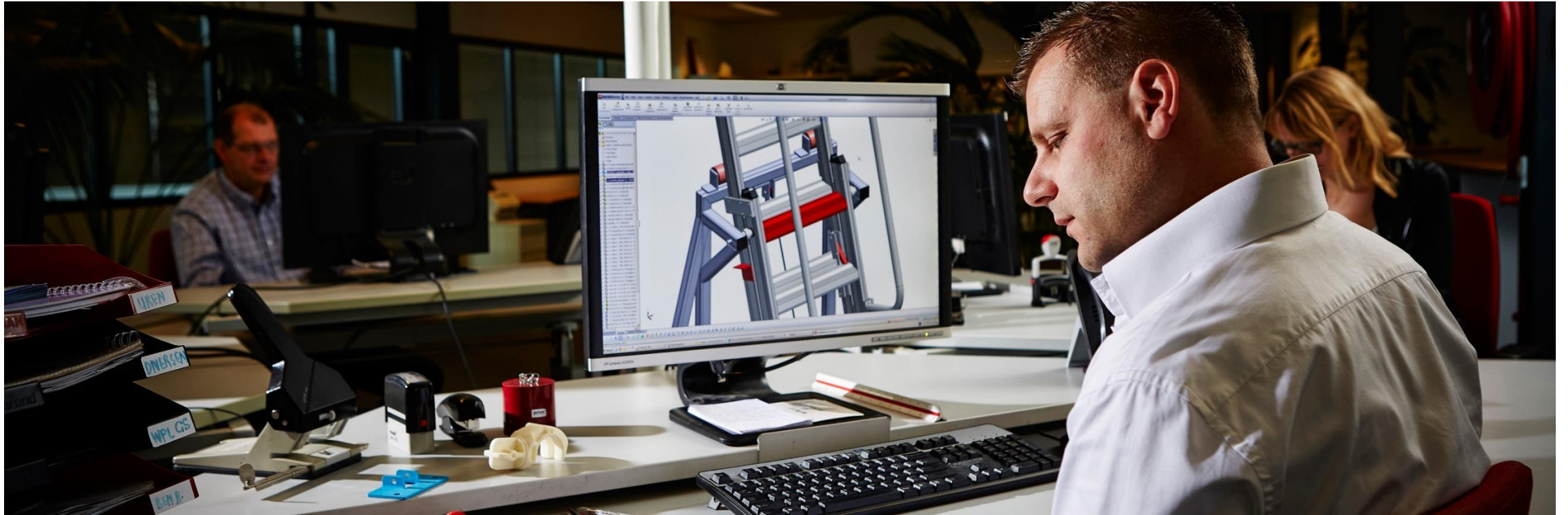


Innovative welding line

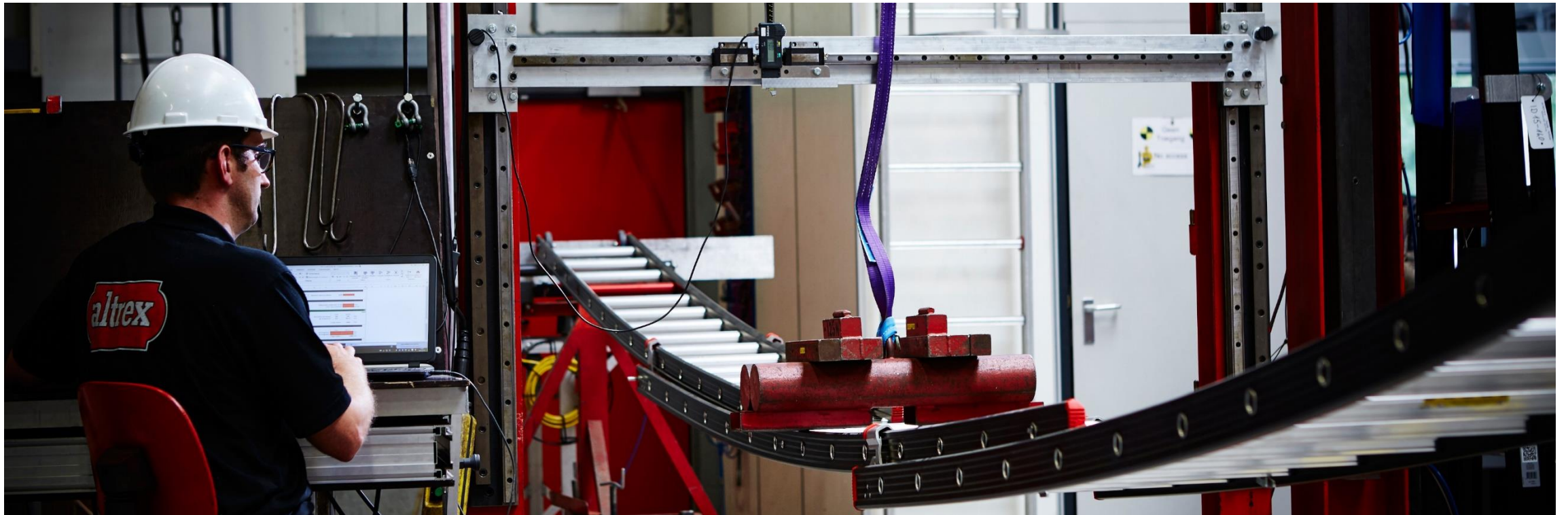


11.500 m²

Engineering



Testing facility



Legislation and standards

EN 131

EN 1004

EN 12811

EN 14183

NEN 2484

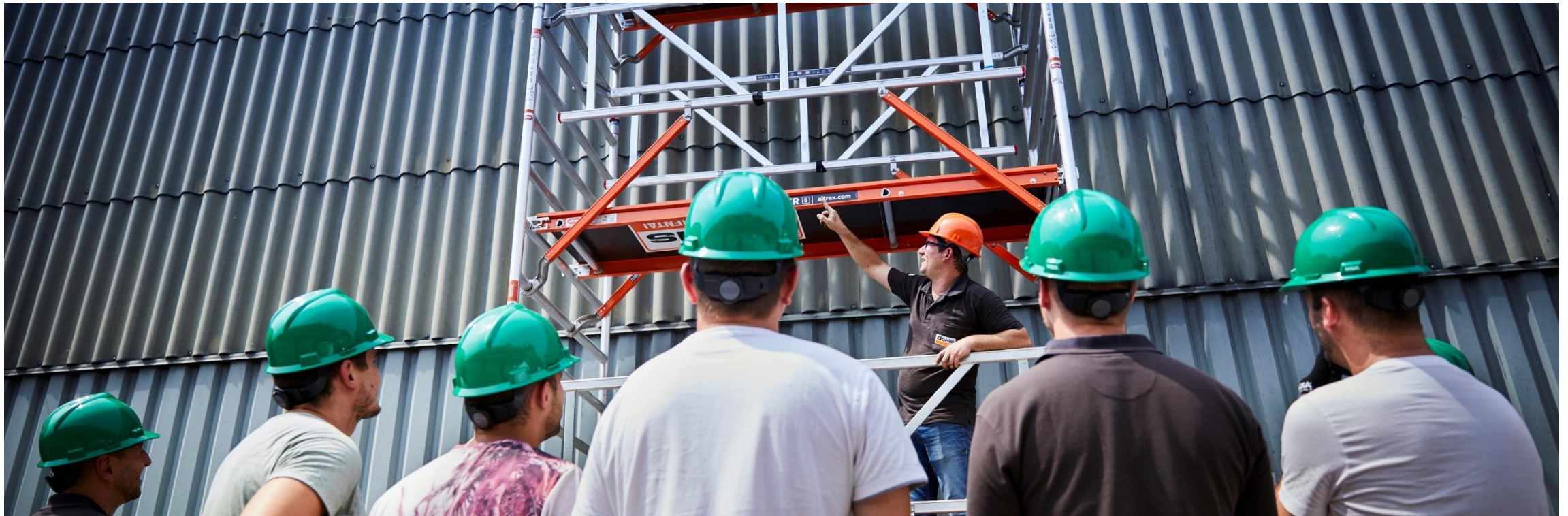


CE

Training



Private label and dual-branding



Product categories



Altrex



Altrex PRO



Altrex PRO+

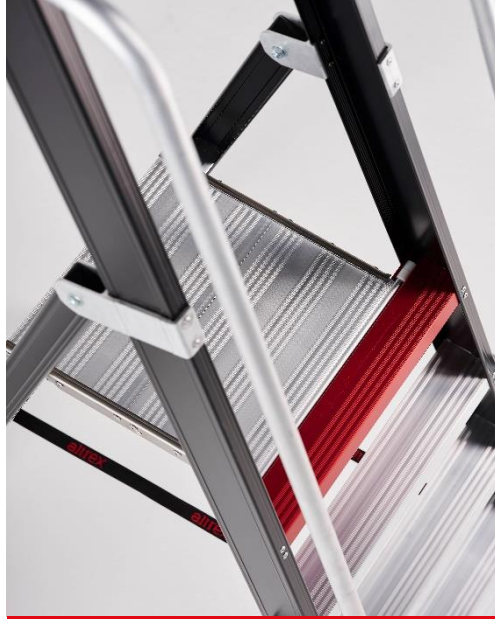


Altrex SPECIALS

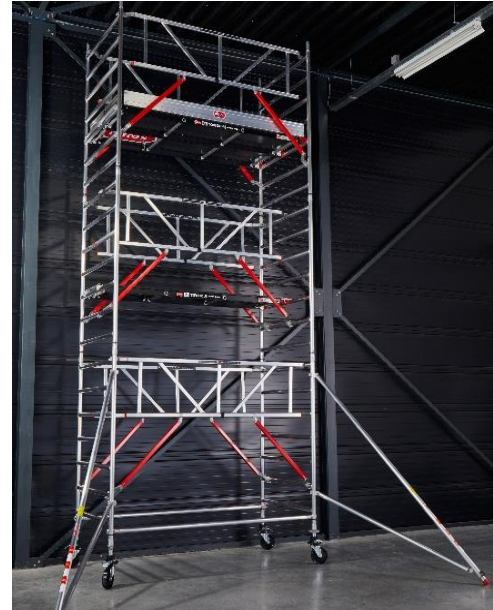
Product ranges



Ladders



Stepladders



Scaffolds



Suspended platforms

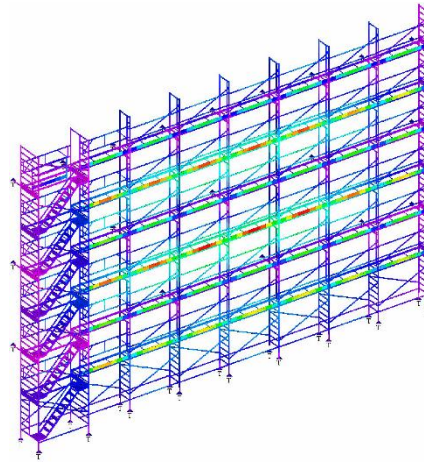
Specials



**Cooperate and
forward thinking**



**Technical
drawing**



Calculations



Production



**Assembly and
testing**