



KENOTEQ®  
KIBRIQ®

**SPECIFICATION &  
INSTALLATION GUIDE**

## K-BRIQ® Facing Brick (Interior and Exterior)



SUSTAINABLE

No firing  
1/10<sup>th</sup> energy used  
< 5% carbon footprint  
100% recyclable

Tested to BS EN standards  
BBA Agreement Certificate 25/7367  
EPD Summer 2025



TESTED



FIRST TO MARKET

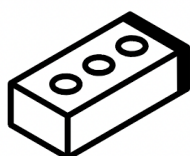
Near 100% recycled content  
Bespoke colours  
Flexible production location  
Construction waste solution

UK Granted (Nov 2018)  
US Granted (June 2020)  
European (Pending)  
Canada (Pending)

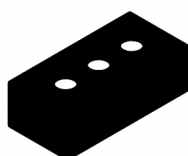


PATENT

RECYCLED  
CONSTRUCTION  
WASTE



90%+

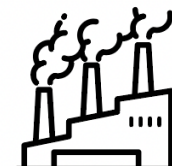


0%

EMBODIED  
CARBON



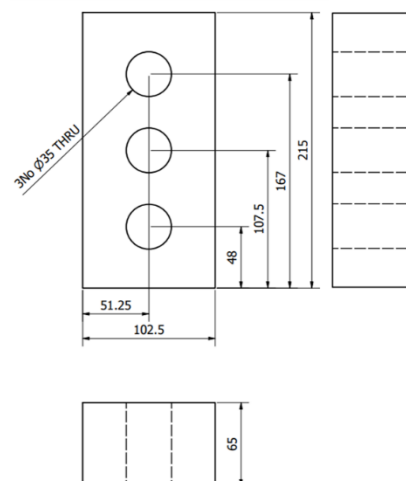
16.8g CO<sub>2</sub>e per unit



455g CO<sub>2</sub>e per unit

## TECHNICAL SPECIFICATION

Type	Pressed brick
Colour	13 standard colours
Configuration	Vertically perforated
Dry Weight	2.2 kg
Dimensions (L x W x H)	215 x 102.5 x 65 mm
Gross Dry Density (kg/m <sup>3</sup> )	1,750 ± 5 %
Compressive Strength (N/mm <sup>2</sup> )	30
Water Absorption (%)	2%
Durability	F2
Reaction to Fire	Class A2 s1 d0 (Medero Dark Grey) Class B s1 d0 (all other colours)



**British Standards:** The K-Briq has been produced and tested to BS EN 772, BS EN 1052, BS EN 4892, BS EN 12572, BS EN 12664, BS EN 13823, BS EN 1716, BS EN 13501, BS EN 15725, BS EN 1745



# BRICK WALLING

## Preparation:

Prior to installation, surfaces should be clean, free from efflorescence, sufficiently damp and rough for proper bonding.

## Mortar:

10mm joints are suggested when using an M4 mortar.

## Lime Mortar:

10mm joints are suggested when using NHL 3.5 and NHL 5 mortars of lime. Sand ratios of 1:2 ½ and 1:2 have good resistance to freezing and thawing actions. Lime mortar is a more suitable alternative.

## Suggested Supplier - (UK):

Cornish Lime

## Movement Joints:

Intervals not exceeding 6 metres and within 3 metres of corners and at joints with different block types.

## Wall Ties:

Treat as a conventional brick, to be specified by the relevant project engineers

## Sealant:

Paintings or sealants are not required with this product. Should sealants be used, natural sealants are suggested e.g. Fila Colour Intensifier Eco Product

KBRIQ®



# CUTTING UNITS

K-BRIQ®

## Method:

Based on in-house processes, it is suggested that units intended for cutting be assessed for any existing damage that may affect the stability of the cut surface. This is recommended specifically if units are to be cut into thin sections. It is recommended that the K-Briq be cut using wet cutting methods, due to the dust that may become airborne during cutting.

## Equipment:

The K-Briq can be cut using a standard stone and tile cutter.

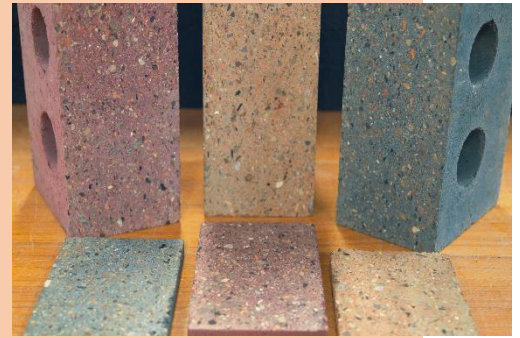
## Safety Measures:

All safety measures specified on any cutting equipment used should always be followed when cutting the K-Briq. Safety glasses, gloves and suitable overalls are recommended to be used.

## Surface Appearance:

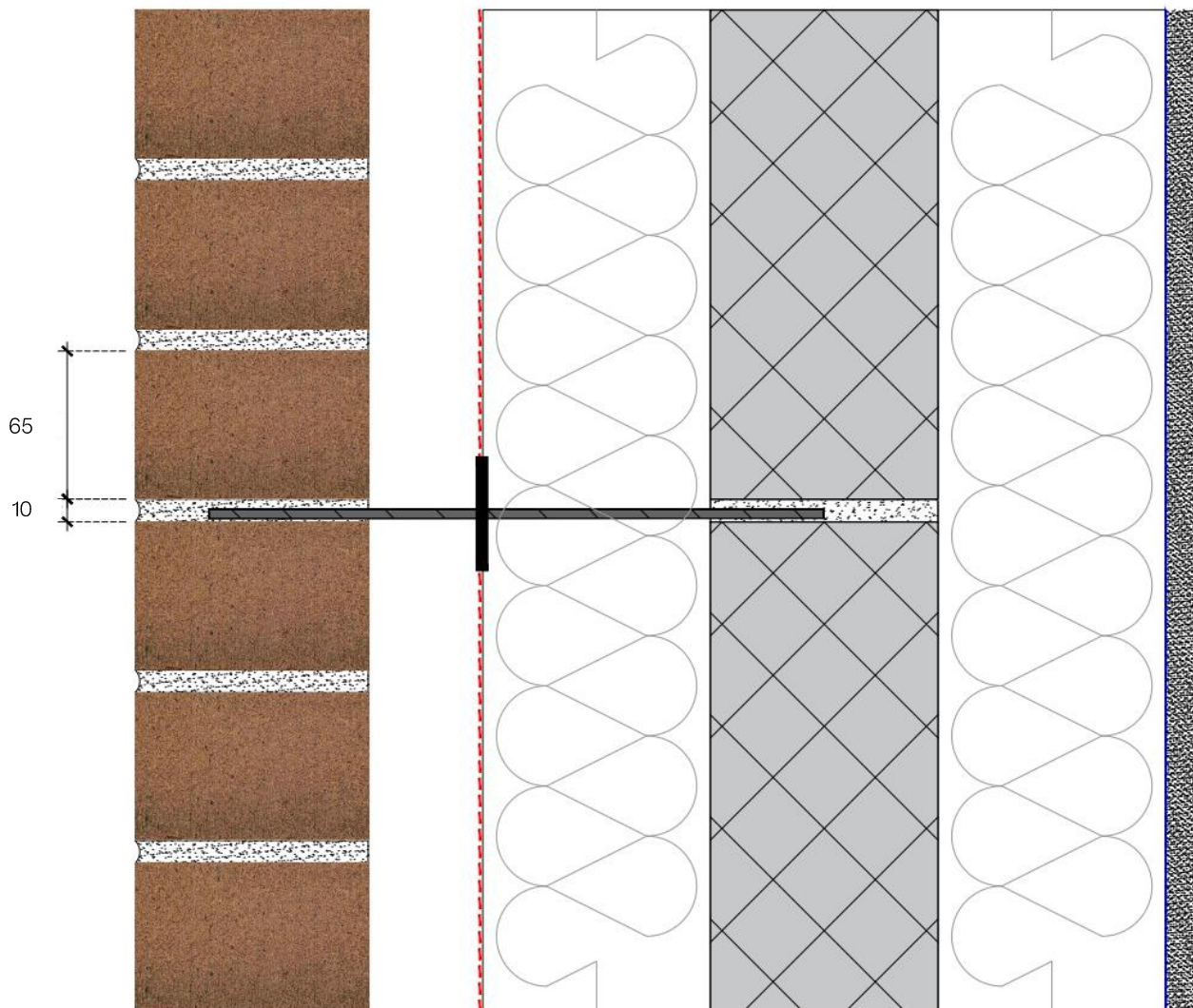
Due to the composition of the K-Briq, the internal face of the units has a different appearance from the outer face. After cutting, the aggregate within the units will become exposed, creating a surface resembling a terrazzo tile.

Cut sections may be used with either the internal or external surface facing outward.





## TYPICAL SECTION THROUGH WALL MASONRY INNER LEAF

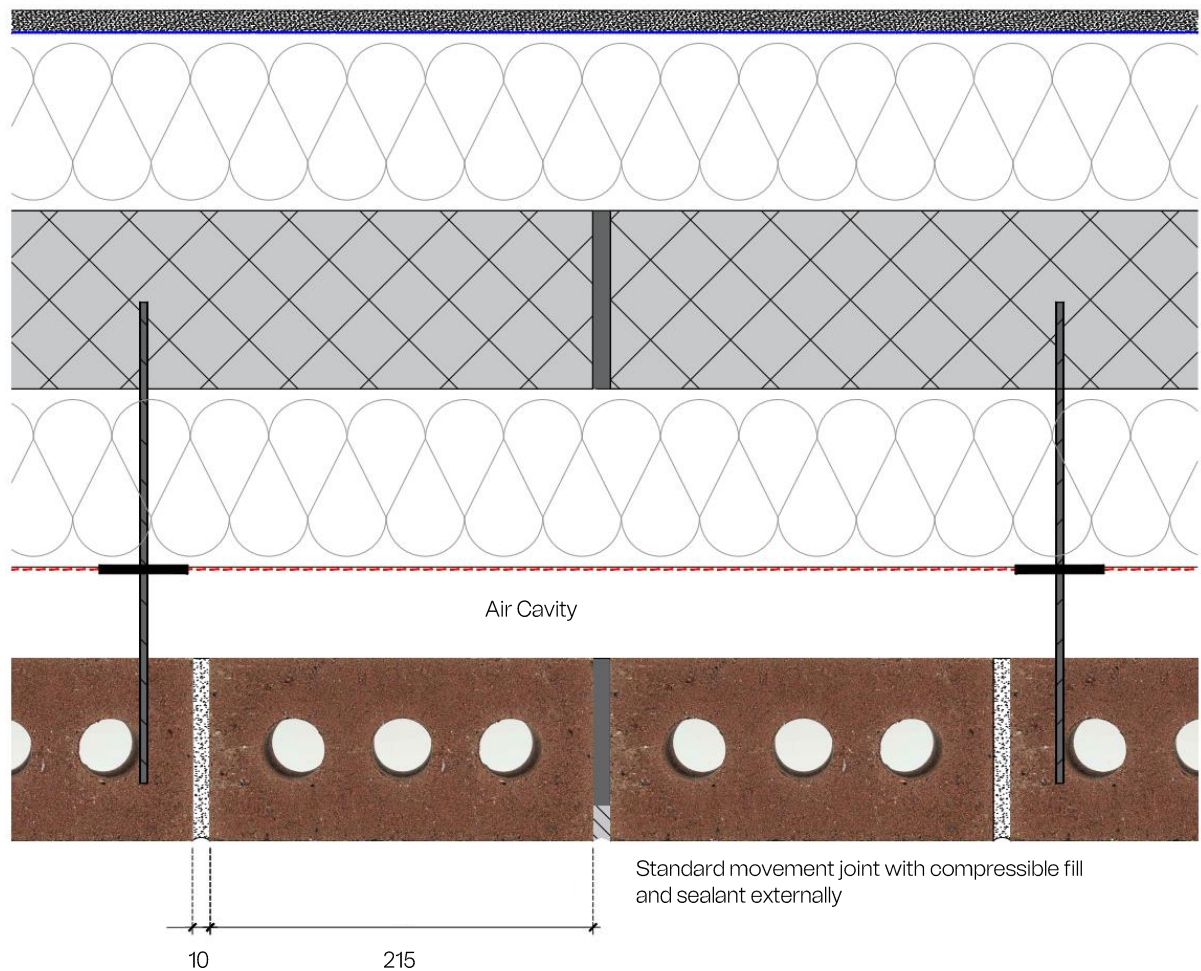


Masonry construction with blockwork inner leaf (size and set out as required by project designer). Showing insulation with cavity and on inside face of blockwork.

Project designer to make use of appropriate wall ties, lintel, perpend vents, fire cavity barriers, air tight barriers, building paper, and structural fixings, insulation and movement joints in accordance with the relevant building standards, British Standards and insurance scheme details.

External cladding K-Briq to be detailed as standard clay brick.

## VERTICAL MOVEMENT JOINT- BLOCKWORK

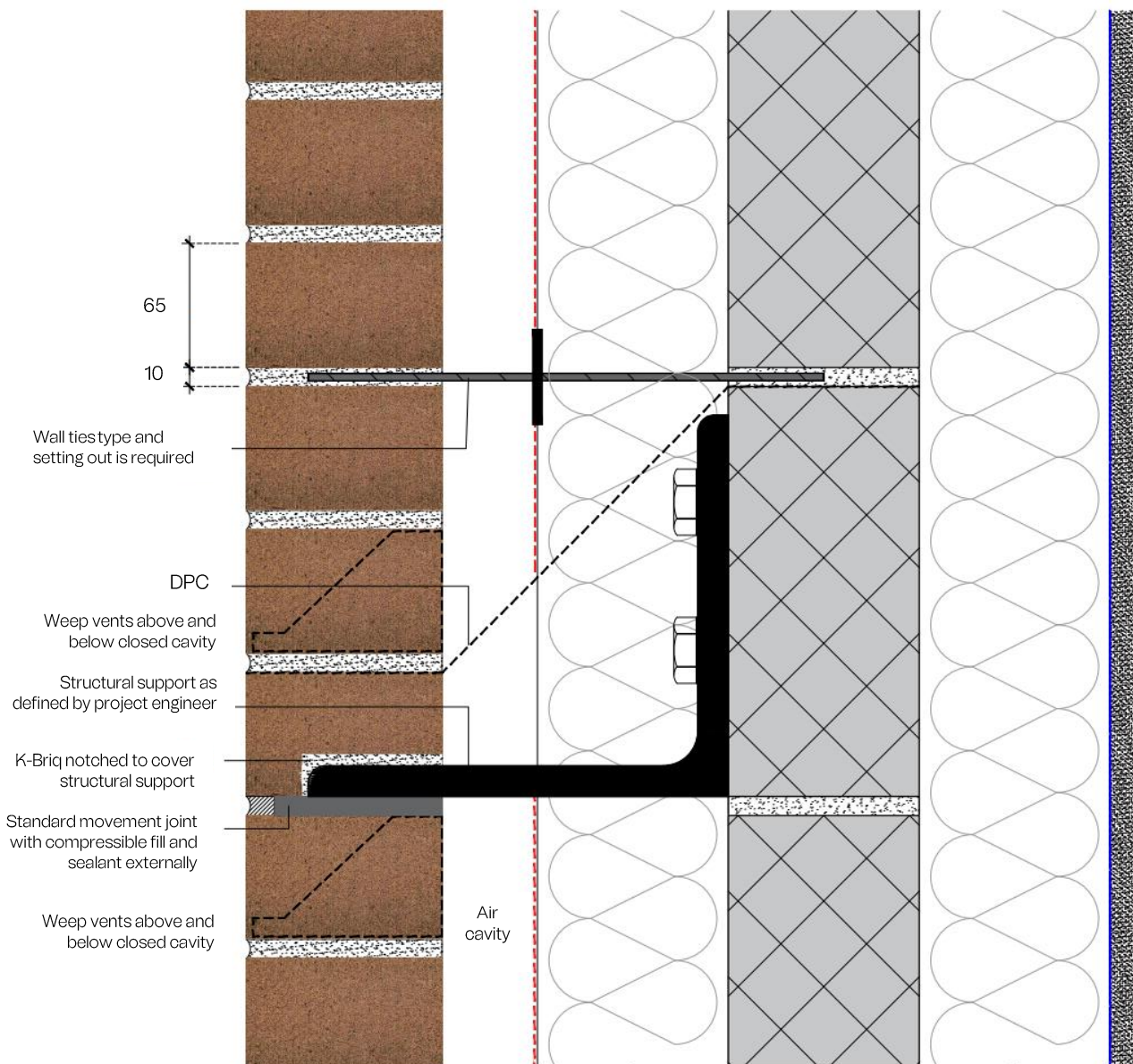


Masonry construction with blockwork inner leaf (size and set out as required by project designer). Showing insulation with cavity and on inside face of blockwork.

Project designer to make use of appropriate wall ties, lintel, perpend vents, fire cavity barriers, air tight barriers, building paper, and structural fixings, insulation and movement joints in accordance with the relevant building standards, British Standards and insurance scheme details.

External cladding K-Briq to be detailed as standard clay brick.

## HORIZONTAL MOVEMENT JOINT- BLOCKWORK



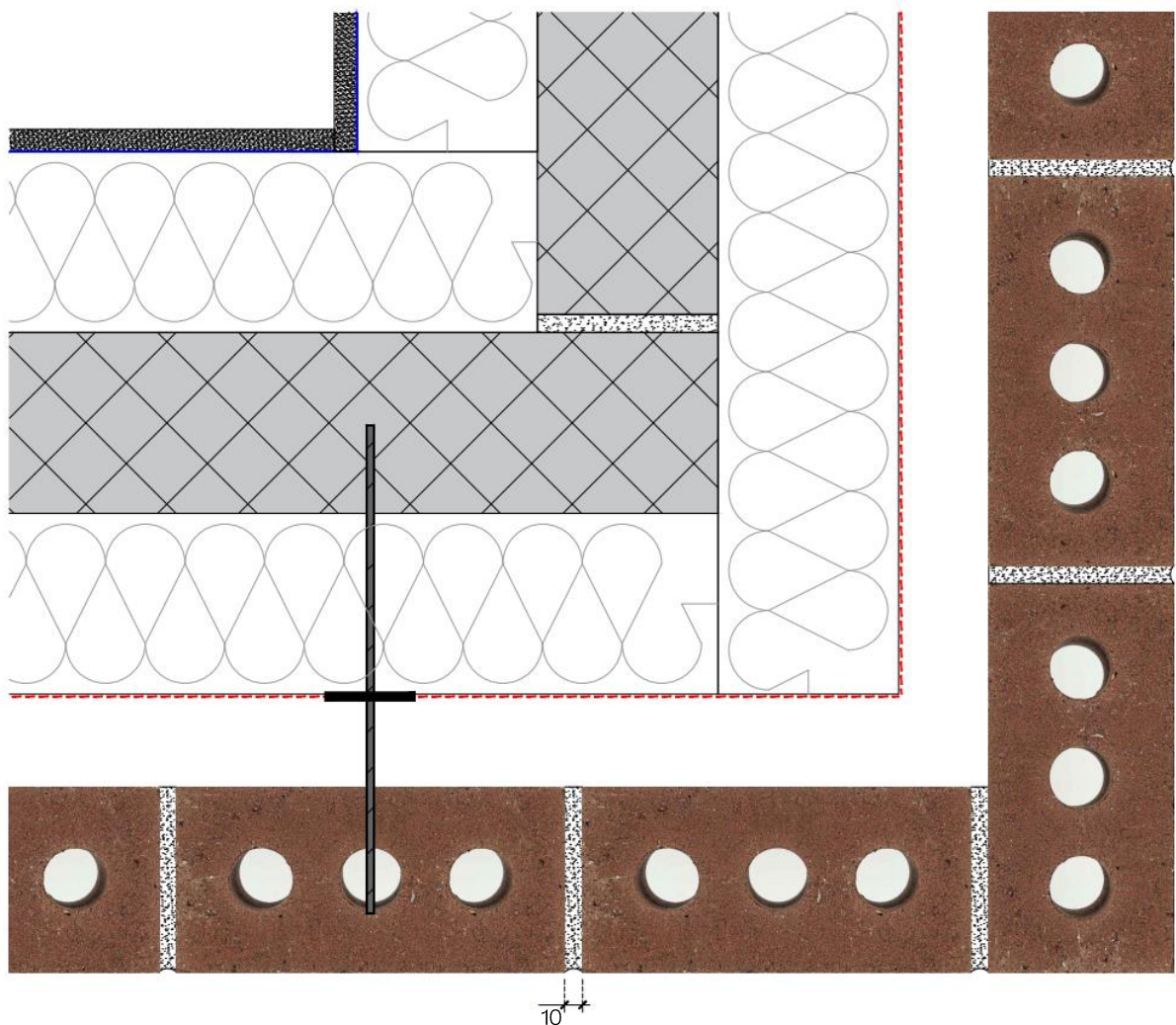
Masonry construction with blockwork inner leaf (size and set out as required by project designer). Showing insulation with cavity and on inside face of blockwork.

Project designer to make use of appropriate wall ties, lintel, perpend vents, fire cavity barriers, air tight barriers, building paper, and structural fixings, insulation and movement joints in accordance with the relevant building standards, British Standards and insurance scheme details.

External cladding K-Briq to be detailed as standard clay brick.



## EXTERNAL CORNER- BLOCKWORK



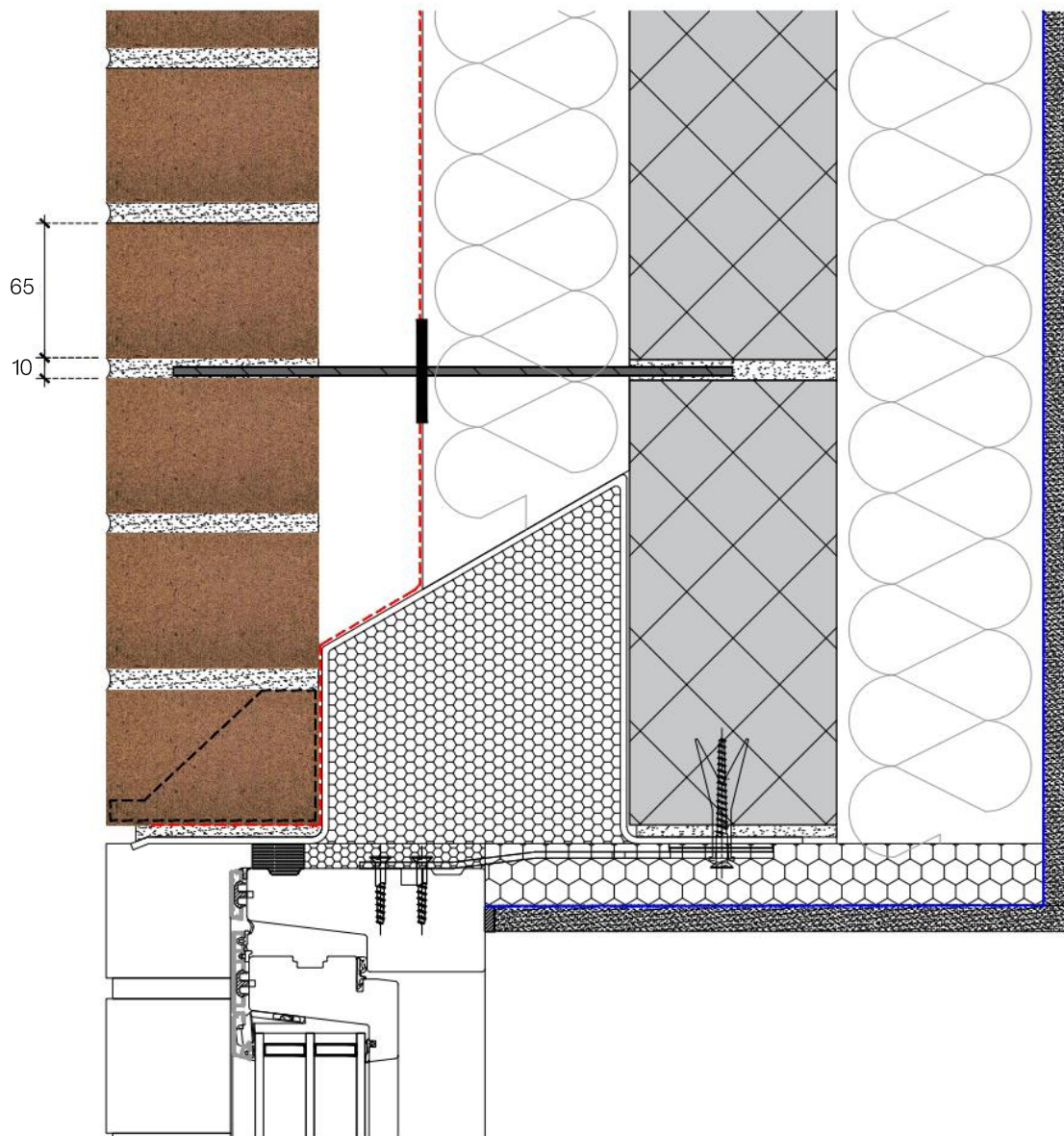
Masonry construction with blockwork inner leaf (size and set out as required by project designer). Showing insulation with cavity and on inside face of blockwork.

Project designer to make use of appropriate wall ties, lintel, perpend vents, fire cavity barriers, air tight barriers, building paper, and structural fixings, insulation and movement joints in accordance with the relevant building standards, British Standards and insurance scheme details.

External cladding K-Briq to be detailed as standard clay brick.



## WINDOW HEAD- BLOCKWORK

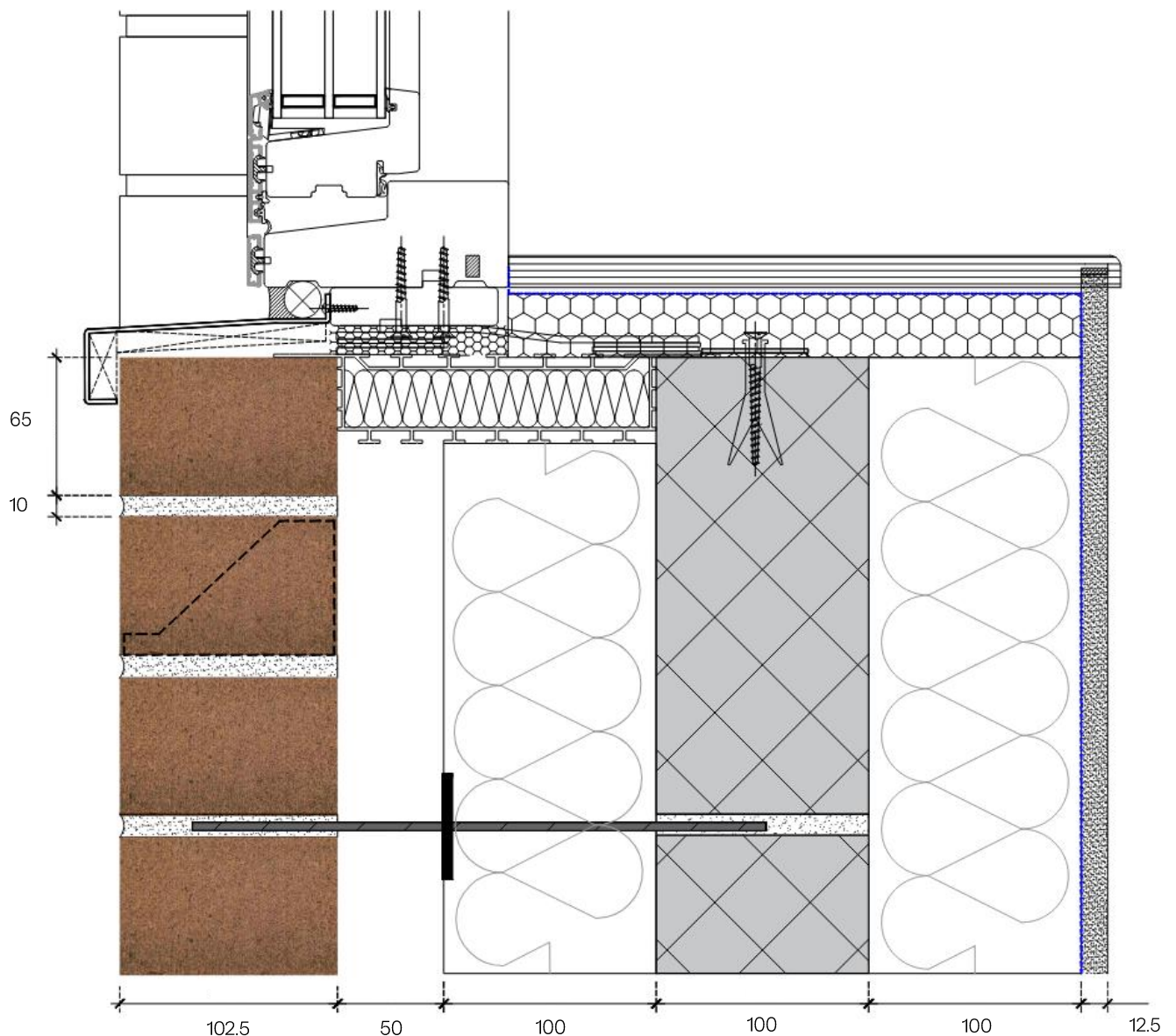


Masonry construction with blockwork inner leaf (size and set out as required by project designer). Showing insulation with cavity and on inside face of blockwork.

Project designer to make use of appropriate wall ties, lintel, perpend vents, fire cavity barriers, air tight barriers, building paper, and structural fixings, insulation and movement joints in accordance with the relevant building standards, British Standards and insurance scheme details.

External cladding K-Briq to be detailed as standard clay brick.

## WINDOW CILL- BLOCKWORK



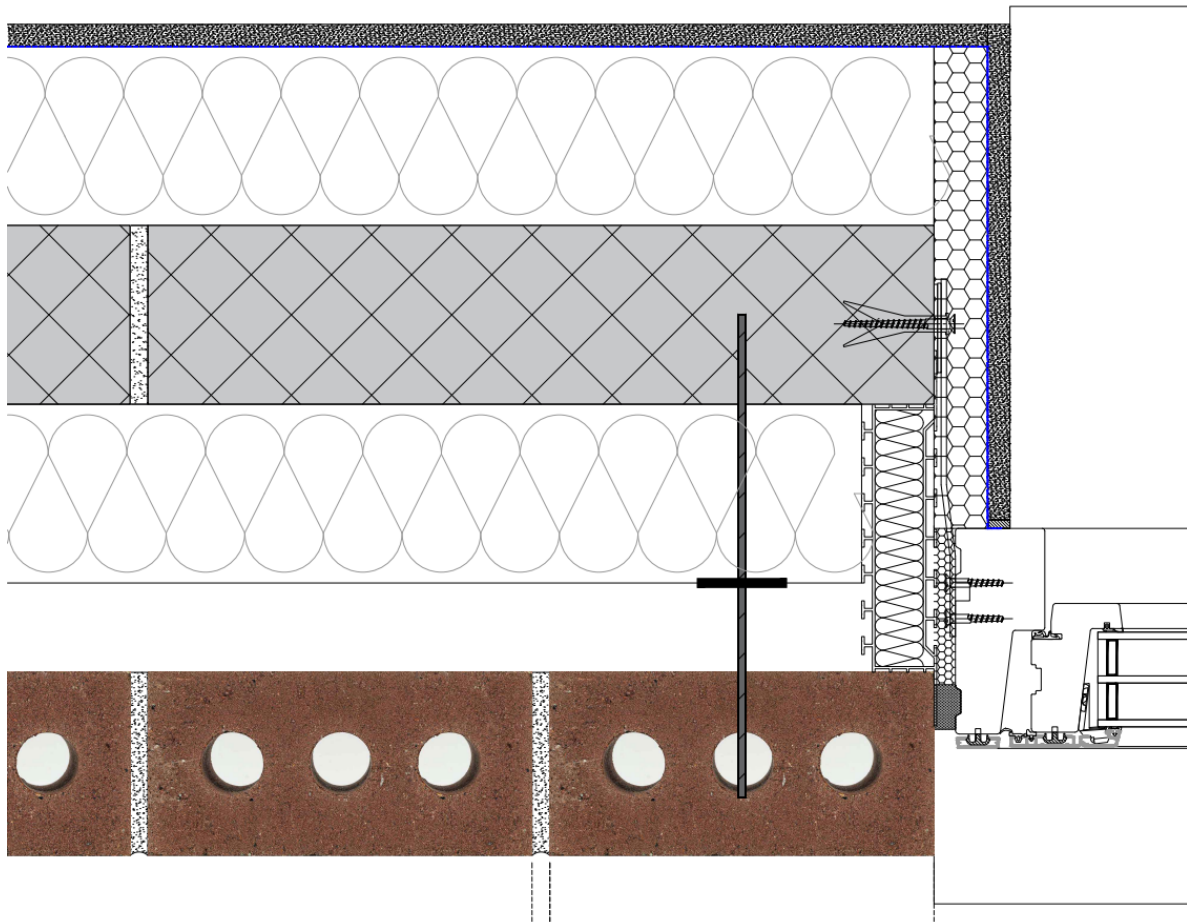
Masonry construction with blockwork inner leaf (size and set out as required by project designer). Showing insulation with cavity and on inside face of blockwork.

Project designer to make use of appropriate wall ties, lintel, perpend vents, fire cavity barriers, air tight barriers, building paper, and structural fixings, insulation and movement joints in accordance with the relevant building standards, British Standards and insurance scheme details.

External cladding K-Briq to be detailed as standard clay brick.



## WINDOW JAMB- BLOCKWORK

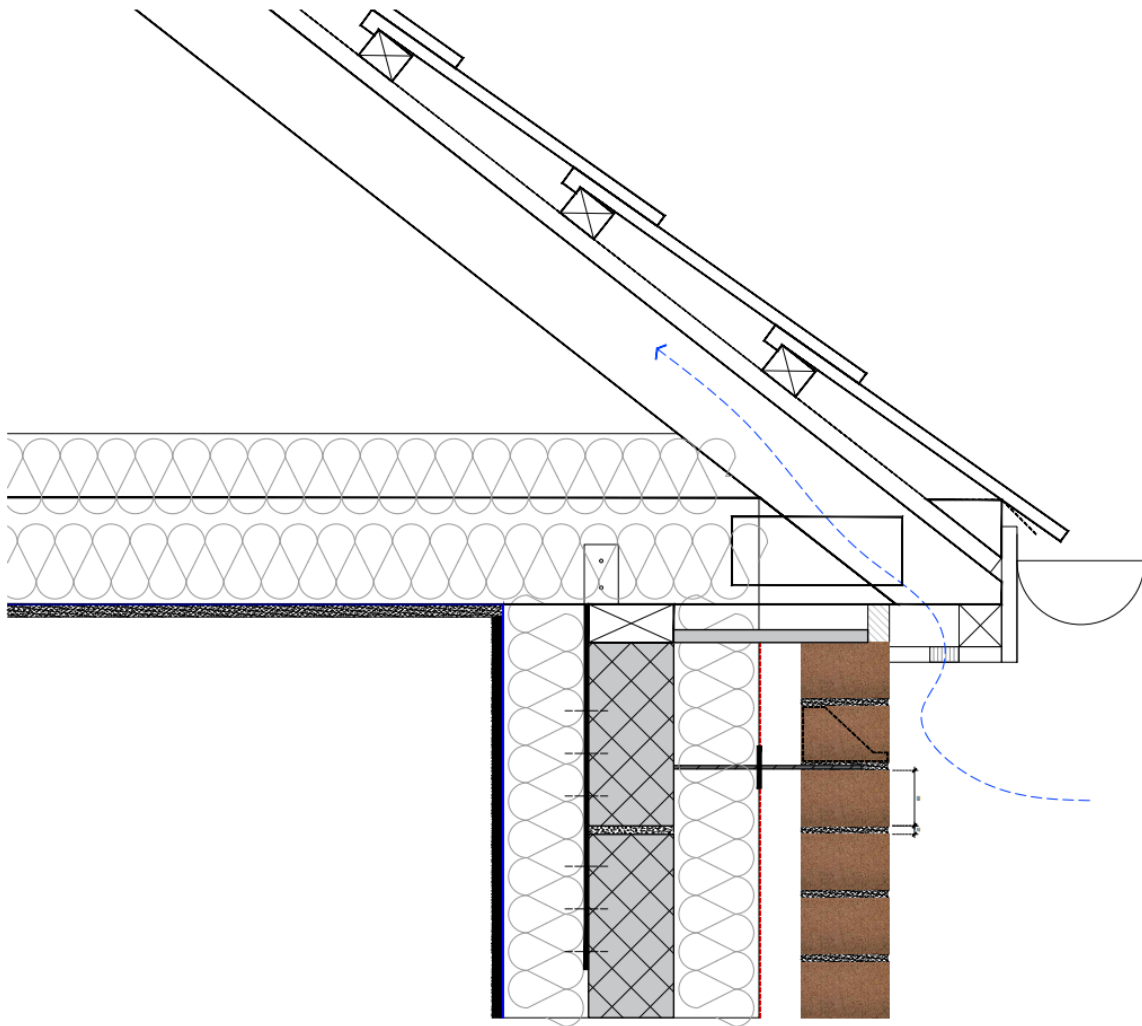


Masonry construction with blockwork inner leaf (size and set out as required by project designer). Showing insulation with cavity and on inside face of blockwork.

Project designer to make use of appropriate wall ties, lintel, perpend vents, fire cavity barriers, air tight barriers, building paper, and structural fixings, insulation and movement joints in accordance with the relevant building standards, British Standards and insurance scheme details.

External cladding K-Briq to be detailed as standard clay brick.

## EAVES- BLOCKWORK



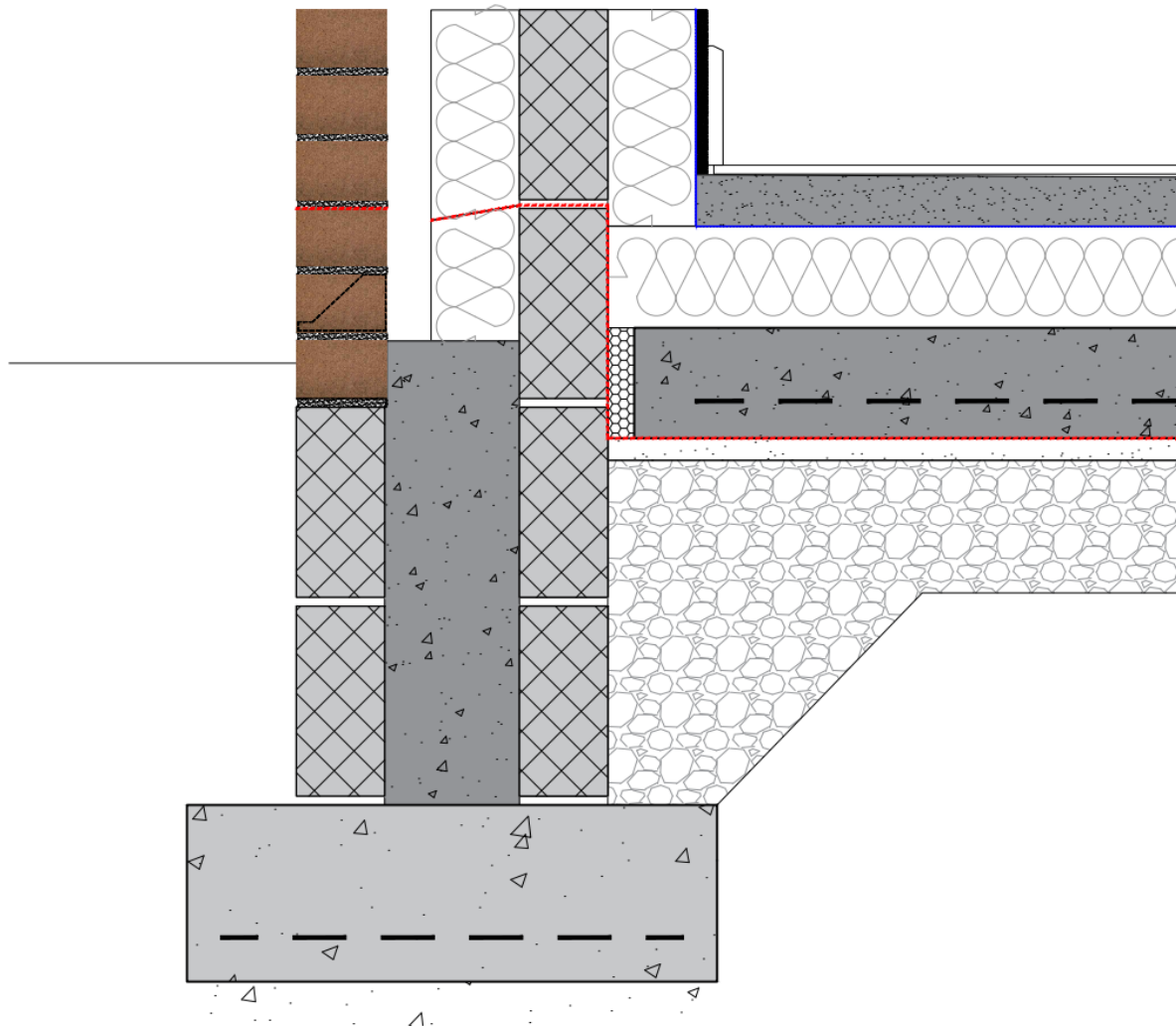
Masonry construction with blockwork inner leaf (size and set out as required by project designer). Showing insulation with cavity and on inside face of blockwork.

Project designer to make use of appropriate wall ties, lintel, perpend vents, fire cavity barriers, air tight barriers, building paper, and structural fixings, insulation and movement joints in accordance with the relevant building standards, British Standards and insurance scheme details.

External cladding K-Briq to be detailed as standard clay brick.



## FOUNDATIONS- BLOCKWORK



Masonry construction with blockwork inner leaf (size and set out as required by project designer).  
Showing insulation with cavity and on inside face of blockwork.

Project designer to make use of appropriate wall ties, lintel, perpend vents, fire cavity barriers, air tight barriers, building paper, and structural fixings, insulation and movement joints in accordance with the relevant building standards, British Standards and insurance scheme details.

External cladding K-Briq to be detailed as standard clay brick.