

Inductive Innovation

Company Presentation ... at a glance

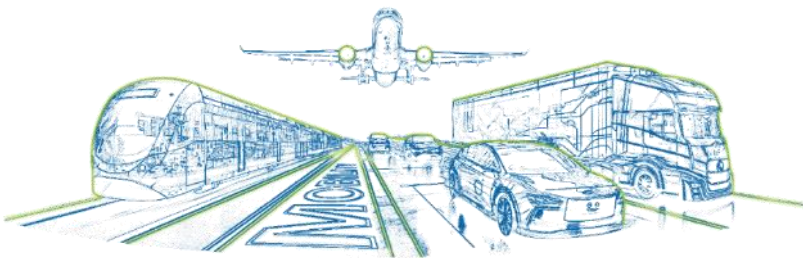
InTiCa Systems Group

Company Profile | Executive Summary

Description	<ul style="list-style-type: none">» InTiCa develops, produces and sells inductive components, passive analog switches und mechatronic assemblies in Germany and abroad.» The company operates in the automotive technology sector with customer-specific solutions such as actuators and EMC filters and in the industrial electronics sector with automation and drive technology.
Key Facts	<ul style="list-style-type: none">» Headquarters: Passau, Germany» Year founded: 2000» Employees: approx. 700 (2023)» Turnover: approx. EUR 87 Mio. (2023)» EBITDA: EUR 6,5 Mio. (2023)
Geography	<ul style="list-style-type: none">» In addition to its headquarters and technology center in Passau, Germany, the company has international development and production sites in Prachatice, Czech Republic, Silao, Mexico and Bila Tserkva, Ukraine.
Management	<ul style="list-style-type: none">» Management Board:<ul style="list-style-type: none">› Dr. Gregor Wasle (CEO)› Bernhard Griesbeck
Shareholder structure	<ul style="list-style-type: none">» Core shareholders: Dr. Dr. Axel Diekmann, Thorsten Wagner, Tom Hiss, Management and Supervisory Board» Free float approx. 20%
Key Markets and Customers	<ul style="list-style-type: none">» 5 continents / 20 countries» 85 active customers» Automotive: More than 200 vehicle platforms

Märkte, Produkte & Applikationen					
	Mobility	Industry & Infrastructure		Tailored Solutions	
	Specialized solutions for electromobility & hybrid mobility applications	Production of customized inductive components, mechatronic modular and system solutions		Flexible and customized products with high quality standards from individual to series production	
					
Product portfolio	Actuators	EMC filters	Power electronics	Sensors	E-machines
Mobility	✓	✓	✓	✓	✓
Industry & Infrastructure	✓	✓	✓		✓
Tailored Solutions	✓	✓	✓	✓	✓
Technology portfolio					
					
	Plastics molding	Automation & Assembly	Joining technology	Winding technology	Testing & Validation

Mobility



Product groups

1

Power Electronics

Power transformers and power chokes, planar transformers for hybrid applications

2

EMC filters

EMC solutions for electric and hybrid vehicles

3

Actuators

Actuators for transmission locks, level control systems, turbochargers, etc.

4

Stators

Stator coils for hybrid and electric vehicles

5

Sensors

Antenna and transponder technology for driving and access authorization systems

<div>Stator systems</div> <div></div>	<div>Electrical engines</div> <div></div>	<div>On-board chargers</div> <div></div>	<div>EMC filters</div> <div></div>
<div>Energy and engine management</div> <div></div>	<div>Inverters</div> <div></div>	<div>Actuators</div> <div></div>	<div>Battery management</div> <div></div>
<div>Drive authorization systems</div> <div></div>	<div>HF antennas for TPM</div> <div></div>	<div>Keyless entry antennas</div> <div></div>	<div>Unit controls for hybrid vehicles</div> <div></div>

In the Mobility segment, which emerged from InTiCa Systems' original core business, the automotive segment, the company is dedicated to the development and production of actuators, sensors, power electronics and drive technology for commercial vehicles, buses, two-wheelers, e-bikes and special vehicles in the construction machinery and agricultural sectors as well as in trailers of various types. The “Mobility” segment also includes the target markets of rail transportation and aviation.

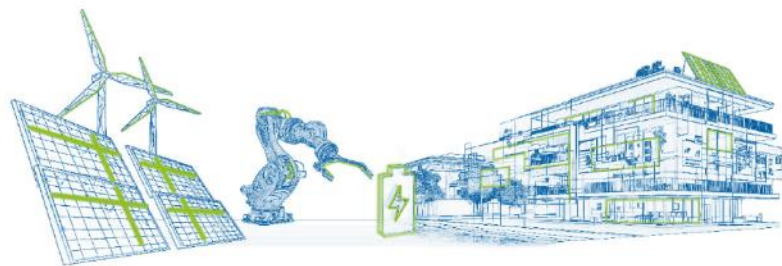
As the former “Automotive business” has been fully integrated into the new “Mobility” segment, comparability and continuity of the company's figures are guaranteed.

Customer orders in this business segment show a clear trend towards electric and hybrid mobility.

The Mobility product range is characterized by a variety of different components, of which products from the areas of onboard chargers, stator coils, EMC filters, inverters and battery management components are particularly relevant for the growing field of e-mobility.

InTiCa Systems develops highly specific solutions for customers in the mobility sector in all five product groups.

Industry & Infrastructure



Product groups

1 Power Electronics



AC filter chokes, step-up and boost chokes, high-frequency transformers, inductance modules for solar inverters

2 EMC filters



Common mode chokes, filter modules and filter assemblies for stationary energy storage systems etc.

3 Actuators

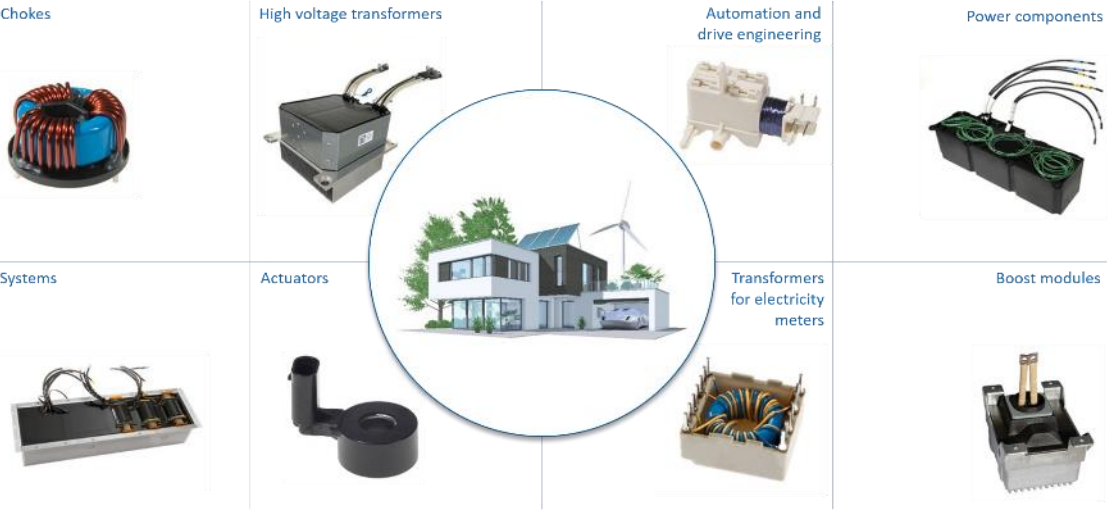


Solenoid coils for combustion engines and switching power supplies for current cut-off, etc.

4 Stators



Stator coils for industrial applications (e.g. pumps), coils for single tooth stators, slip-on coils etc.



Our second business segment, “Industry and Infrastructure”, is characterized by high-quality, customized inductive components, mechatronic module and system solutions for renewable energy sources (such as solar), as well as automation and drive technology. In these areas, InTiCa Systems develops competent solutions tailored to specific requirements through its engagement in development.

The heart of the “Industry and Infrastructure” segment lies in the technology of inverters or converters, which relies on the ability of inductive components to convert solar energy into grid-ready electricity. This technology is integral to a variety of innovative InTiCa Systems products and contributes to the company’s global market presence in power transformers, interference suppression components, coils, and filters. Additionally, InTiCa Systems’ offerings in the industrial sector are complemented by the expertise of the InTiCa Systems team in power electronics, automation, and drive technology.

Notably, the Industry & Infrastructure segment also applies the concept of “E-Solutions” to products related to inverters, smart metering, energy storage systems, and electric charging systems. Synergies between the Industry & Infrastructure and Mobility business segments offer the potential to harmonize E-Solutions and E-Mobility—for example, by combining electric vehicles with modern charging infrastructure.

InTiCa global | Markets and Sites



Passau (DE) Company HQ



Passau (DE) Technology Centre



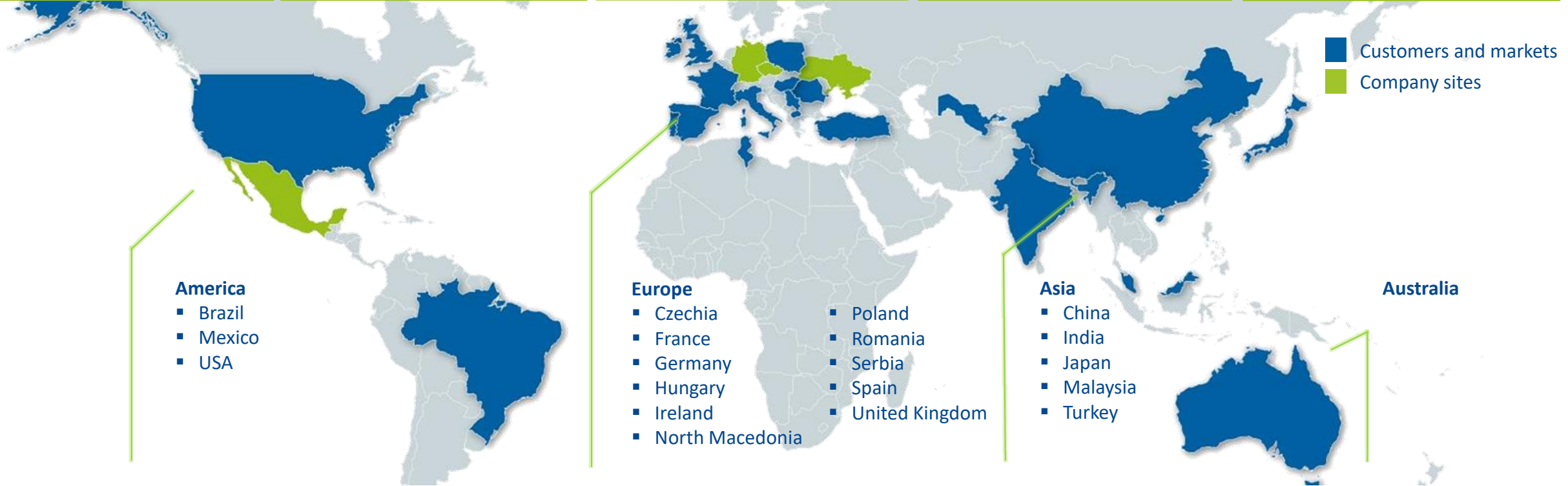
Silao (MX) Production plant



Prachatice (CZ) Production plant



Bila Tserkva (UA) Production plant



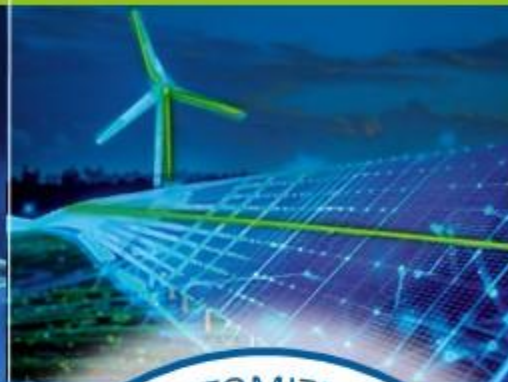
AUTOMOTIVE & COMMERCIAL



RAIL & MULTI-PURPOSE



RENEWABLE ENERGY



ENVIRONMENTAL



HEALTHCARE



MOBILITY



INDUSTRY &
INFRASTRUCTURE



ACTUATORS & SENSORS



EMC FILTERS



TRANSFORMERS & CHOKES



ELECTRIC MACHINES



PLASTICS

DISCLAIMER

This presentation contains forward-looking statements based on assumptions and estimates made by the management of InTiCa Systems SE.

Although management believes that these assumptions and estimates are accurate, actual future developments and results may differ materially from these predictions due to a variety of factors. These factors may include, for instance, changes in the macroeconomic situation, exchange rates and interest rates, as well as changes within the markets.

InTiCa Systems SE provides no guarantee and assumes no liability that future developments and actual future results will match the assumptions and estimates made. InTiCa Systems SE assumes no obligation to update the forward-looking statements contained herein or to adapt them to future events or developments.



InTiCa
Systems

Spitalhofstraße 94
D-94032 Passau

phone +49 (0) 851- 96692-0
fax +49 (0) 851- 96692-15
E-Mail info@intica-systems.com
Home www.intica-systems.com