



We are the Cartographers of the Green Transition

For Prospective Clients & Partners

Empowering Industrial AI Through High-Quality Market Data

Industrial markets - especially those in cleantech and renewable energy - are complex, rapidly evolving, and increasingly data-driven.

An abstract, monochromatic background image featuring a dense, textured landscape composed of numerous small spheres and vertical cylinders, creating a sense of depth and architectural complexity.

Table of Contents

- 01 Executive Summary
- 02 Introduction:
The AI & Data Imperative
- 03 Company Background
& Vision
- 04 The ALETHEIA Program
& Core Data Infrastructure
- 05 Hydrogen & Renewable Fuels
Market Dashboard
- 06 Segment-Agnostic
M&A Dashboard
- 07 Competitive
Landscape
- 08 USPs &
Licensing Model
- 09 Future
Outlook



Words from the Founders.

“Working at the forefront of market intelligence, we witnessed the transformative potential of data. Now, we’re committed to evolving that insight into a platform that not only anticipates market shifts but actively drives growth.”

We spent years immersed in market intelligence, grappling with unreliable data, costly acquisition processes, and long lead times that stalled critical decisions. Frustrated by these daily challenges, we envisioned a future where data could be transformed into a single, trusted source of truth. This vision drove us to create Delphi Data Labs.

By harnessing the power of AI, we set out to develop a platform that continuously evolves- ensuring both advanced algorithms and human analysts have access to real-time, reliable insights. Our approach replaces traditional bottlenecks with scalable, context-rich data, empowering industries ranging from green hydrogen and renewable fuels to automotive and heavy machinery. We’re committed to democratizing access to information, enabling organizations to onboard more internal users and foster a culture of informed decision-making.

Today, as we turn everyday challenges into opportunities, our mission remains clear: to drive industrial growth and innovation by leveraging AI and data excellence to create a future where every decision is supported by precise, actionable intelligence.

We built our business on key differentiators that set us apart. True intelligence connects the dots across projects, companies, technologies, and M&A. By integrating multiple data layers in a knowledge graph, we uncover hidden patterns and provide a deeper, strategic industry view. Combining automation with expert validation, our AI-powered approach delivers faster, high-quality insights with broader coverage and greater accuracy. Traditional market intelligence, by contrast, relies on costly, manual research, limiting both scale and efficiency. With a degressive pricing model that lowers costs as adoption grows, we eliminate per-seat fees, making market intelligence more scalable, collaborative, and cost-effective across the entire organization.

Lukas Strohmeier
Founder & CEO

Miroslav Negovan
Co-Founder & COO

“Clean data is the fuel for AI.”

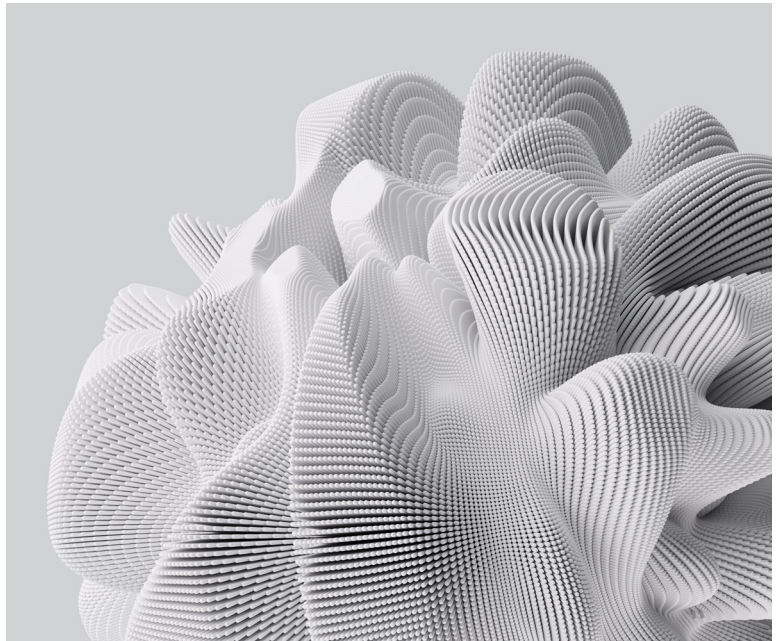
01

Industrial markets—especially those in cleantech and renewable energy—are complex, rapidly evolving, and increasingly data-driven. At Delphi Data Labs, we believe:

“Clean data is the fuel for AI.”

As AI becomes more central to industrial decision-making, data quality can make or break strategic outcomes. Analysts predict that by 2026, up to 90% of online content may be AI-generated (source: oodaloop.com).

This exponential rise in synthetic outputs underscores the risk of AI “model collapse” if machines are trained on content not anchored in real-world truth (Xing et al. 2024).



In this whitepaper, you'll discover:

1. How Delphi Data Labs directly addresses the data-quality challenge, ensuring “Garbage In, Garbage Out” is a relic of the past.
2. Our Hydrogen & Renewable Fuels Market Dashboard and Segment-Agnostic M&A Dashboard, both powered by our proprietary ALETHEIA Program - a continuously expanding, real-time data infrastructure covering thousands of companies, projects, and market transactions.
3. Why we have product-market fit & profitability: Our MVPs reached six-figure ARR in their first year, validating the urgent need for high-fidelity data in industrial markets.
4. How we outperform both legacy data providers and top consulting firms by delivering contextualized, cost-effective, and dynamic intelligence.
5. Our open licensing philosophy, designed to maximize organizational learning by granting broad internal access to every client.

“Why High-Quality Data Matters”

02

Artificial intelligence promises unprecedented efficiency and insight for industrial markets—enabling everything from predictive maintenance to supply chain optimization to market trend forecasting. But AI models are only as good as the data they ingest.

Why High-Quality Data Matters

1. **Decision Accuracy:** Informed forecasts guide multi-million (even multi-billion) euro investments.
2. **Reduced Risk:** Reliable data mitigates costly errors and market missteps.
3. **AI Enablement:** Structured, context-rich data powers advanced analytics and machine learning—helping businesses respond to market changes with agility.

Delphi Data Labs was founded on the principle that:

“Robust, trusted data is not just a tool - it’s the catalyst for industrial transformation.”

Building on this vision, Delphi Data Labs is committed to reshaping how industries harness information for strategic advantage. Our approach ensures that every data point is meticulously validated and enriched with context, empowering AI systems to deliver actionable insights. With this foundation, companies can not only anticipate market shifts but also optimize operations across the board - from predictive maintenance to nuanced supply chain adjustments.

In an era where sustainability and efficiency go hand in hand, the reliability of your data becomes the bedrock of innovation. Our platform aggregates and structures real-time information to create a seamless “source of truth,” enabling decision-makers to invest confidently in initiatives that drive long-term success. As the industrial landscape evolves, high-quality data is what differentiates proactive strategy from reactive measures.

At Delphi Data Labs, we believe that robust, trusted data is not just a tool - it’s the catalyst for industrial transformation. By continuously enhancing our data solutions, we empower businesses to navigate complex challenges and seize opportunities with precision and agility.

Company Background & Vision

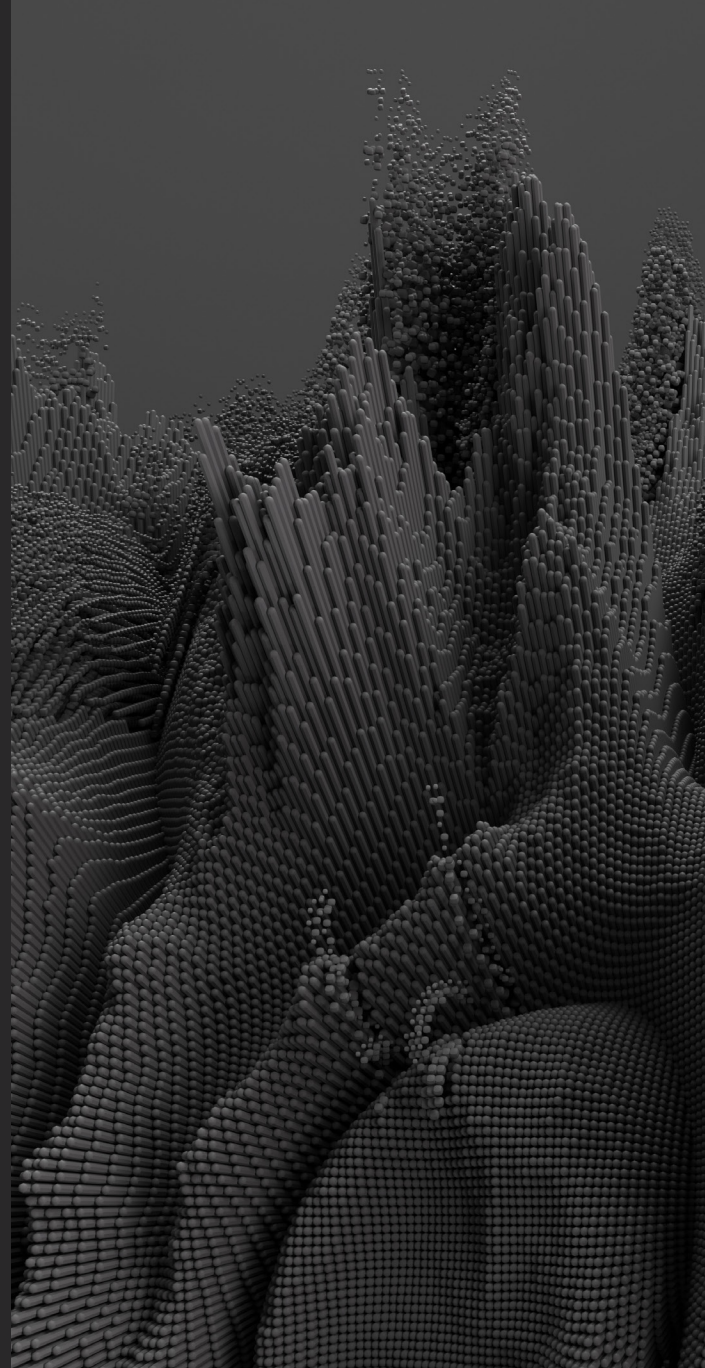
“Grassroots Innovation, Data-Driven Impact”

03

Born from modest beginnings and **fueled by innovation**, we harness high-quality data to transform industrial challenges into rapid growth opportunities.

As we uncovered critical flaws in the global market intelligence ecosystem, our Delphi Data Labs journey began with the determination to challenge convention.

Our lean, dynamic team has been instrumental in transforming initial challenges into scalable opportunities.



Early traction drives our journey toward transformative growth.

From Bootstrapping to Growth

- / **Grants & Early Traction:** In addition to our growing revenues, Delphi Data Labs raised over USD 1.2 million in R&D grants. Unlike most startups, we have been profitable every year since our inception, with each successive year accelerating our growth.
- / **Core Team:** Our expertise spans M&A, strategy, data science, software development, and industrial engineering. This cross-functional DNA allows us to rapidly solve complex industrial challenges.



Our Philosophy

We are convinced that the green energy transition is both a necessity and the greatest business opportunity of our time - one that requires unparalleled access to information to thrive.

- / **Data as a Foundation for AI:** We provide a consistent, evolving data engine so both AI algorithms and human analysts can rely on trustworthy facts.
- / **Scalable Across Verticals:** We began with green hydrogen and renewable fuels, but our data engine is built to scale far beyond.
- / **Democratizing Access:** We want clients to onboard as many internal users as possible. Our degressive pricing fosters a robust knowledge culture within organizations.

Delphi Data Labs has grown into a data-driven force committed to empowering industrial sectors. By providing accessible, context-rich insights, we help businesses navigate complexity and seize new opportunities for sustainable, long-term success.

The ALETHEIA Program & Core Data Infrastructure

“By contextualizing and structuring chaos, we map the most unpredictable yet commanding force of our era: the market.”

04

ALETHEIA - Greek for “truth” or “disclosure” - is our vision to build a semantic market AI.

ALETHEIA will be built on two pillars:
ATLAS & GAIA

ATLAS Program

Automated Data Gathering & Cleaning

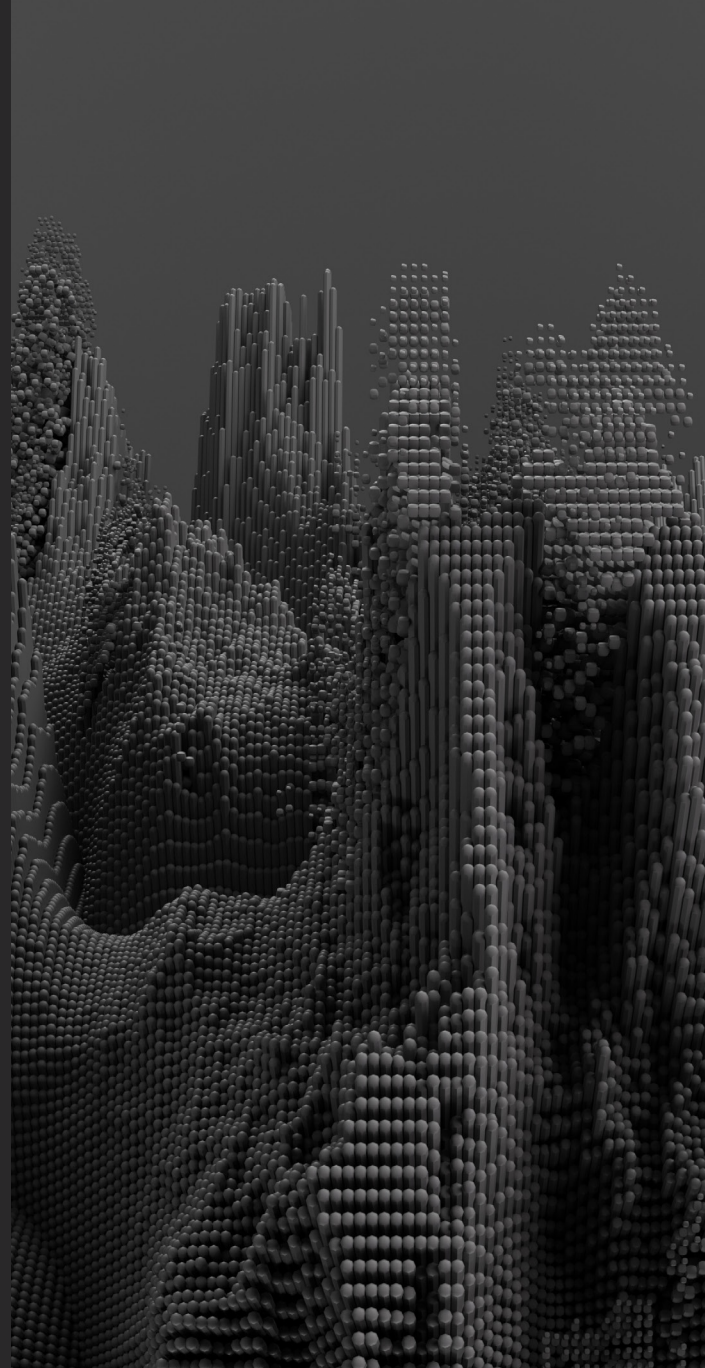
- / We combine large-scale web scraping, NLP pipelines, and data standardization to transform raw, unstructured data into a clean, accurate resource.

GAIA Program

Knowledge Graph for Complex Industrial B2B Markets

- / By linking companies, patents, assets, M&A transactions, and market news, we create a digital twin of the industrial ecosystem—revealing interconnections that traditional databases miss.

Our long-term vision is to develop an interactive Frontend that offers natural language querying and immersive data visualization, enabling a ‘market AI’ that any industrial stakeholder can tap into.



What are Knowledge Graphs and Graph Databases?

A knowledge graph is a structured representation of relationships between entities, integrating diverse data sources to create a connected, contextualized understanding of information. A graph database is a database designed to store and query relationships efficiently using nodes and edges, enabling seamless data exploration.

Our knowledge graph, GAIA, is built on a native graph database, ensuring optimal performance, scalability, and deep connectivity for advanced market intelligence and insights.

Why a Graph Database for Industrial Data?

Industrial B2B markets are fundamentally relational. Organizations must manage immense volumes of interconnected data - ranging from operational metrics and regulatory updates to supply chain movements and competitor activities. Traditional relational databases often struggle with this level of complexity, as they can't easily capture or visualize the web of relationships among diverse data points.

Our graph-based approach, however, is purpose-built for such intricate environments. By representing data as nodes and edges, we can model real-world connections in a way that's both flexible and intuitive. This structure enables faster, more context-rich queries, making it easier to spot patterns, optimize processes, prevent fraud and discover new opportunities. Most importantly, a graph database naturally supports real-time updates, ensuring that your "source of truth" remains accurate and dynamic - even as market conditions shift.

Our graph-based approach:

1. Scales seamlessly with large, interconnected datasets.
2. Adapts fast as new technologies or players emerge.
3. Enables advanced real-time queries, e.g., "Which Asian companies have the largest electrolyzer capacity, and who are their EPC contractors?"

Data Sources & Validation

- / **Automated Scraping & NLP:** We track project announcements, investment data, patents, and more from reliable, vetted portals.
- / **Curated Inputs:** Delphi partners with consultancies and industrial experts for added data vetting and business context.
- / **Continuous Updates:** Our pipeline ensures the data always reflects current projects, real-time deals, and new technologies.

Through this combination of graph technology and rigorous validation, Delphi Data Labs offers an industrial data platform that goes beyond static reporting. We empower decision-makers with actionable, real-time insights, enabling them to navigate complexity and remain competitive in rapidly changing markets.

We are the cartographers of the Green Transition.

Hydrogen & Renewable Fuels Market Dashboard

**“It’s to legacy data
terminals what the iPhone
is to the Nokia 3210”**

05

The Hydrogen & Renewable Fuels Market Dashboard is our flagship product, born out of ALETHEIA’s rich dataset. It addresses the data chaos in green hydrogen, renewable fuels, and emerging low-carbon derivatives - providing intuitive visualizations, real-time analysis, and in-depth project tracking that feels as seamless as any modern consumer app.

**If you work in the hydrogen market, you
no longer need four different market
intelligence providers - just one.**

Overview & Key Features



Global Hydrogen Landscape

Instantly see the hottest regions, technologies, and corporate players.



Integrated Newsfeed

Never miss a key announcement or investment with a scrolling feed of curated industry headlines - directly linked to companies & projects.



Detailed Project Tracking

From early concept to FID (Final Investment Decision) and operational, track each project’s exact status and timeline.



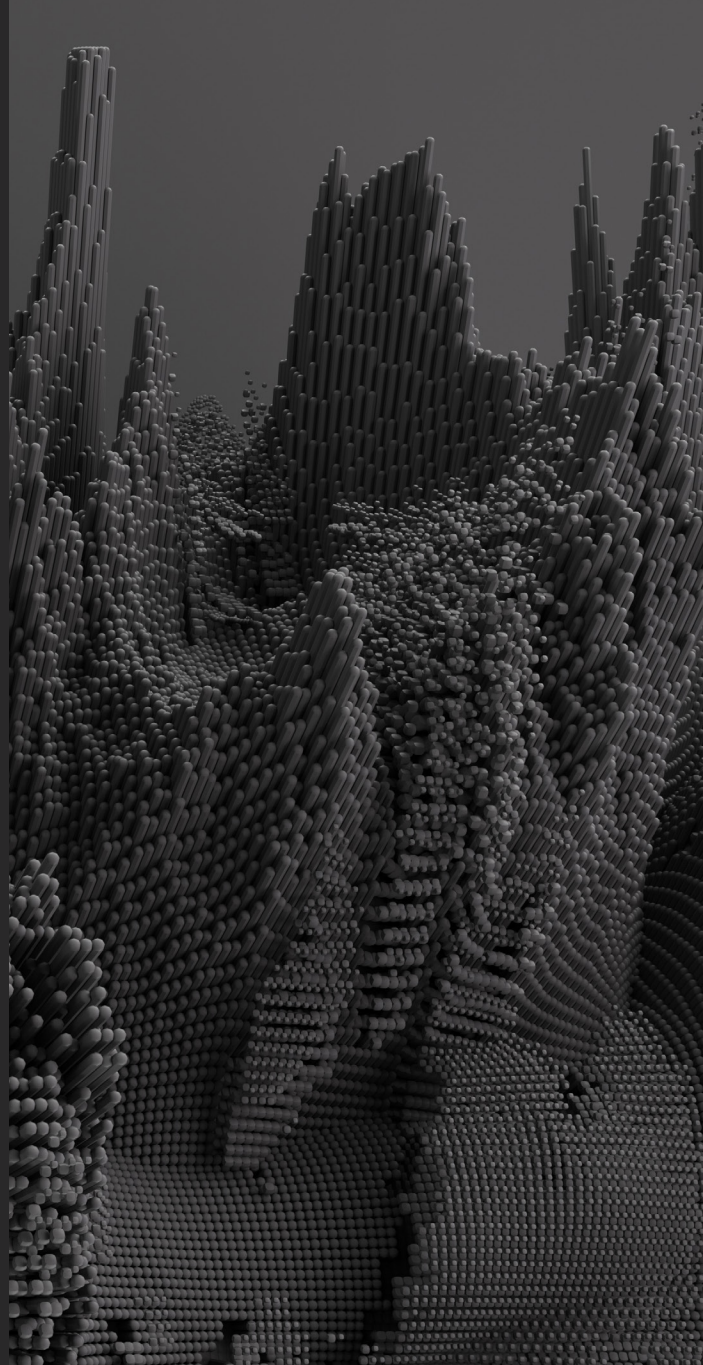
Company Intelligence & Rankings

Dive deep into company profiles - from major OEMs to new disruptors.



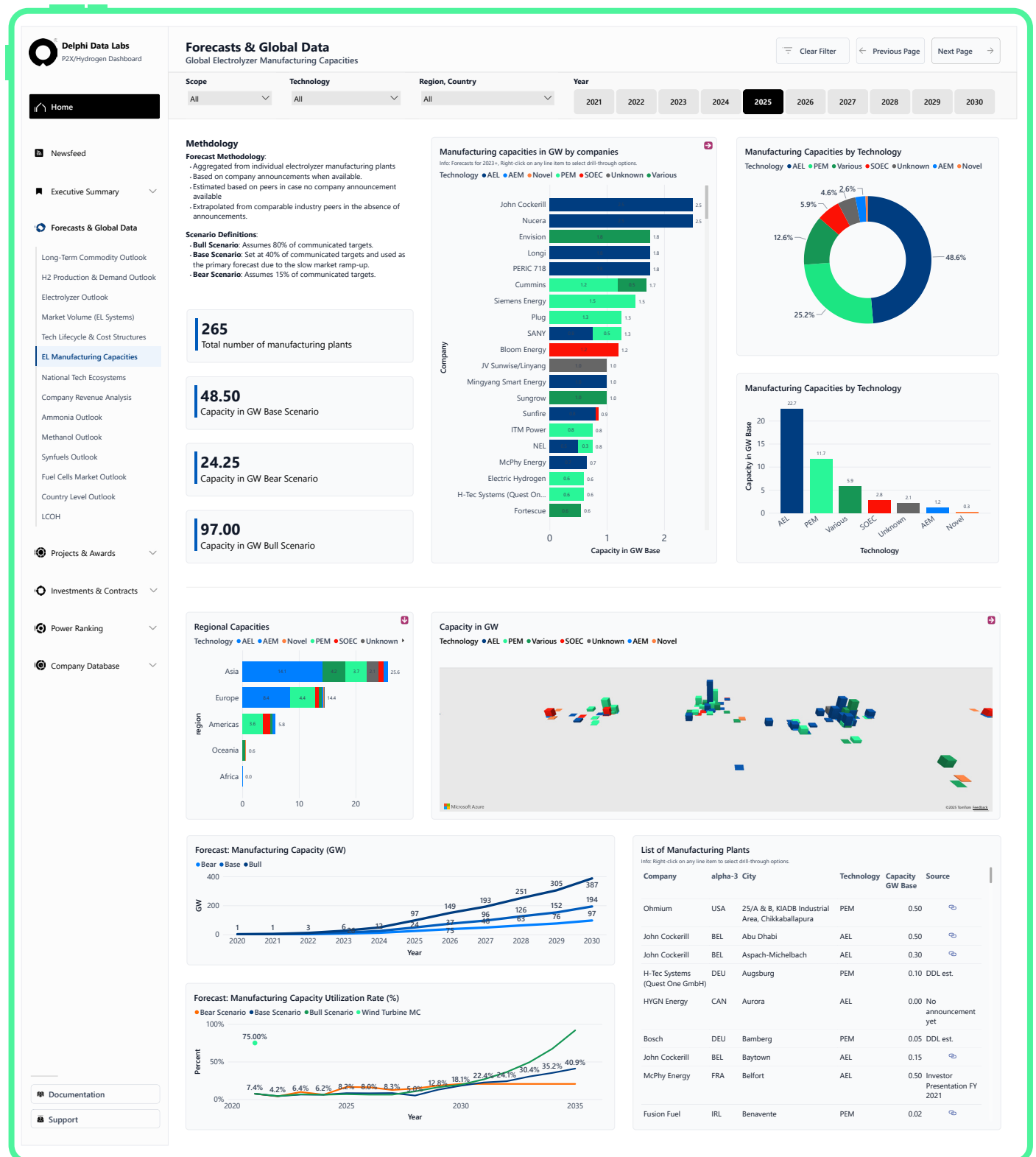
Wide Range of Forecasts

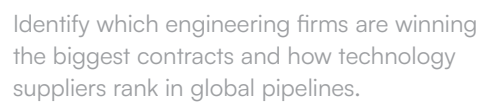
Breakdowns of electrolyzer deployments, hydrogen production curves, and cost projections for the next 10+ years.



Each news snippet arrives with a direct link to the source - plus a “one-click” pivot to the relevant company or project profile..

Forecasts & Global Data: Charting the Energy Future





Evaluate potential partners or acquisition targets, benchmarked against 7 key categories (e.g., Financials, Market Share, Technology).

For sales teams, Product Managers, Purchasing departments, BD managers, or C-level strategists - Identify relevant suppliers or clients across the value chain.

Segment-Agnostic M&A Dashboard

“Your always-on deal pipeline, powered by real-time market intelligence”

06

Our second key product, the **Segment-Agnostic M&A Dashboard**, is built on the same ALETHEIA Knowledge Graph. It's tailored for corporate development and M&A professionals targeting sectors beyond hydrogen - from aerospace and industrial automation to electric

Overview & Key Features



Custom Ranking Criteria

Define your own filters - financial ratios, ESG metrics, technological maturity - so you can instantly spot the most relevant targets.



Flexible Dashboard

Tailor the layout, metrics, and alerts to match your corporate processes, ensuring the insights you need are always front and center.



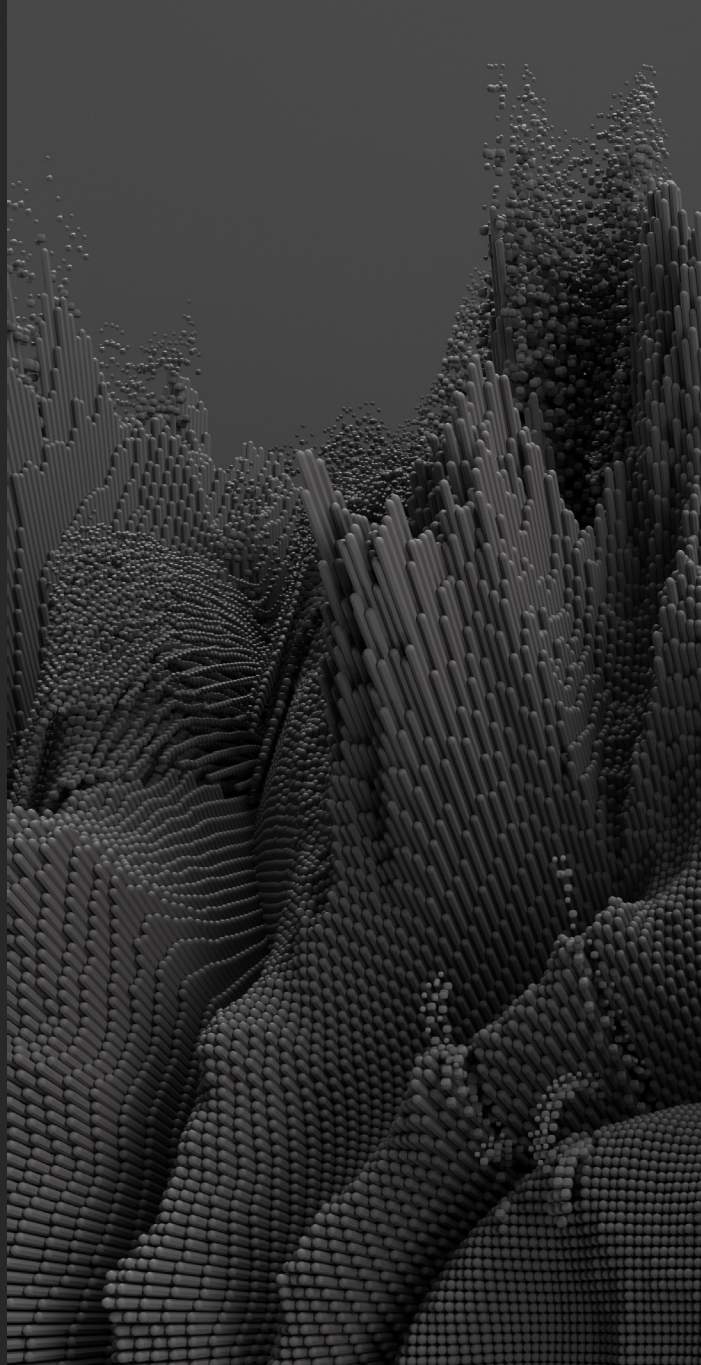
Integrated Data Feeds

Seamlessly plug in Delphi's GAIA data for a comprehensive, up-to-date view of potential acquisitions or partners.



Pipeline Management

Track thousands of targets over time, from initial screening to final negotiations, all in one unified workspace.



Use Cases & Benefits

M&A in industrial markets requires navigating a vast network of data: from operational metrics and financials to regulatory changes and shifting competitive landscapes. Traditional relational databases often struggle with this level of complexity, as they can't easily capture the nuanced interconnections among potential targets, suppliers, and partners.

Our Segment-Agnostic M&A Dashboard addresses these challenges head-on, leveraging a graph-based approach that maps relationships between data points in real time. By visualizing these links as nodes and edges, it provides a dynamic, intuitive view of the market - making it simpler to spot acquisition targets, assess synergies, and stay ahead of emerging trends.

This structure naturally supports real-time updates, ensuring your deal pipeline remains up-to-date, even as market conditions evolve. Ultimately, it's a smarter way to manage the complex web of M&A-related information.

Use Cases

- / **Long-Term Deal Sourcing:** Continuously watch for emerging companies in your focus areas. The moment they raise capital or announce a pilot project, you get notified.
- / **Enterprise-Wide Coordination:** M&A, finance, and technical teams share a single source of truth - eliminating the back-and-forth of spreadsheets.
- / **Real-Time Market Monitoring:** Receive automatic alerts for newly announced deals, expansions, or corporate restructurings. Quickly identify comparable company valuations in your target segment and stay a step ahead of the competition.

By centralizing and streamlining the entire deal lifecycle, the Segment-Agnostic M&A Dashboard ensures you never miss an opportunity. From early discovery to final negotiations, our platform equips you with real-time intelligence and a clear path to execute successful transactions.

Use Cases for Different Stakeholders

Delphi Data Labs was built to address the diverse needs of professionals navigating complex industrial landscapes. From strategic dealmaking to engineering innovation, our platform provides real-time, reliable data to power confident decision-making. The following use cases illustrate how each stakeholder can benefit from our insights - helping them spot opportunities, mitigate risks, and drive growth.

Industries



Technology OEMs



Energy & Infrastructure



EPCs



Consulting & Finance



Industrial End Users



Governments

Stakeholder

/ M&A Managers

Quickly evaluate acquisition targets or JV partners. Stay on top of thousands of potential deals via a long-term pipeline view.

/ Strategy & Corporate Development

Spot new regional policies, emerging technologies, and competitive moves before they disrupt the market.

/ Sales & Business Development

Identify the most active players in renewable fuels, see who's awarding contracts, and pinpoint your next big client.

/ Product Managers & Engineering Teams

Track technology transitions (e.g., PEM to AEM electrolyzers), align product roadmaps, and benchmark cost curves.

/ Investment & Portfolio Managers

Monitor diverse investment opportunities. Identify and mitigate risks while proactively rebalancing portfolios for optimal returns.

/ Marketing & Communications

Time product launches or conferences around industry milestones. Draw on real-time insights for more impactful campaigns.

Driving Growth with Data

By offering targeted intelligence tailored to each stakeholder, Delphi Data Labs enables organizations to make better, faster decisions. Our mission is to bridge information gaps and empower teams across every function to seize opportunities and stay ahead in an ever-evolving industrial landscape.

Distinguishing Factors & Competitive Landscape

“A partner that adapts seamlessly to new market realities”

07

It's critical to partner with a data provider that not only delivers timely insights but also adapts seamlessly to new market realities. Delphi Data Labs stands out by offering a platform that is both robust and forward-looking, enabling teams to make data-driven decisions without the typical barriers of outdated information or restrictive user policies.

/ Holistic Market View

Our platform integrates data from multiple angles, covering projects, companies, technologies, M&A activity, and more - to provide a comprehensive industry view.

/ Graph-Powered Insights

By mapping relationships and connections that spreadsheets can't capture, we offer a deeper, more contextual understanding of your market.

/ Cost & Time Savings

Many consulting firms already rely on our data—now you can access it directly and bypass added fees.

/ Unlimited User Access

We encourage broad internal usage, so entire teams can align on the same intelligence and collaborate more effectively.

/ Frequent Updates

Our data is continuously updated - eliminating the lag found in static reports or stale PDFs.

Competitive Landscape

Traditional platforms and consulting firms offer valuable insights, but they often come with limitations—fragmented data, restricted access, and high costs. Consulting projects, in particular, provide only a static snapshot in time, quickly becoming outdated in fast-moving markets.

Delphi Data Labs is designed to complement or replace the existing market intelligence landscape.

Legacy Data Providers

Major providers like **Rystad**, **GlobalData**, **S&P Platts**, and **Wood Mackenzie** offer broad coverage but often rely on legacy data models that can't display the entire complexity of fast-moving industrial value chains. By contrast, Delphi Data Labs emphasizes data quality, transparency, user experience, and flexibility - ensuring an agile, consistently accurate platform.

Consulting Firms

Strategy giants like **Bain**, **McKinsey** and **BCG** typically supplement their expertise by reselling or synthesizing third-party data, adding their own high-end analysis. Different consultancies already license Delphi's data for hydrogen or cleantech assignments - indicating the trust and value we bring to the market.

Why work with Delphi?

“Immediate access to real-time, high-quality data”

Our direct approach eliminates the extra layers that add cost and complexity. By partnering with Delphi Data Labs, you gain immediate access to real-time, high-quality data - empowering you to build a continuously updated internal intelligence resource.

Cost Efficiency

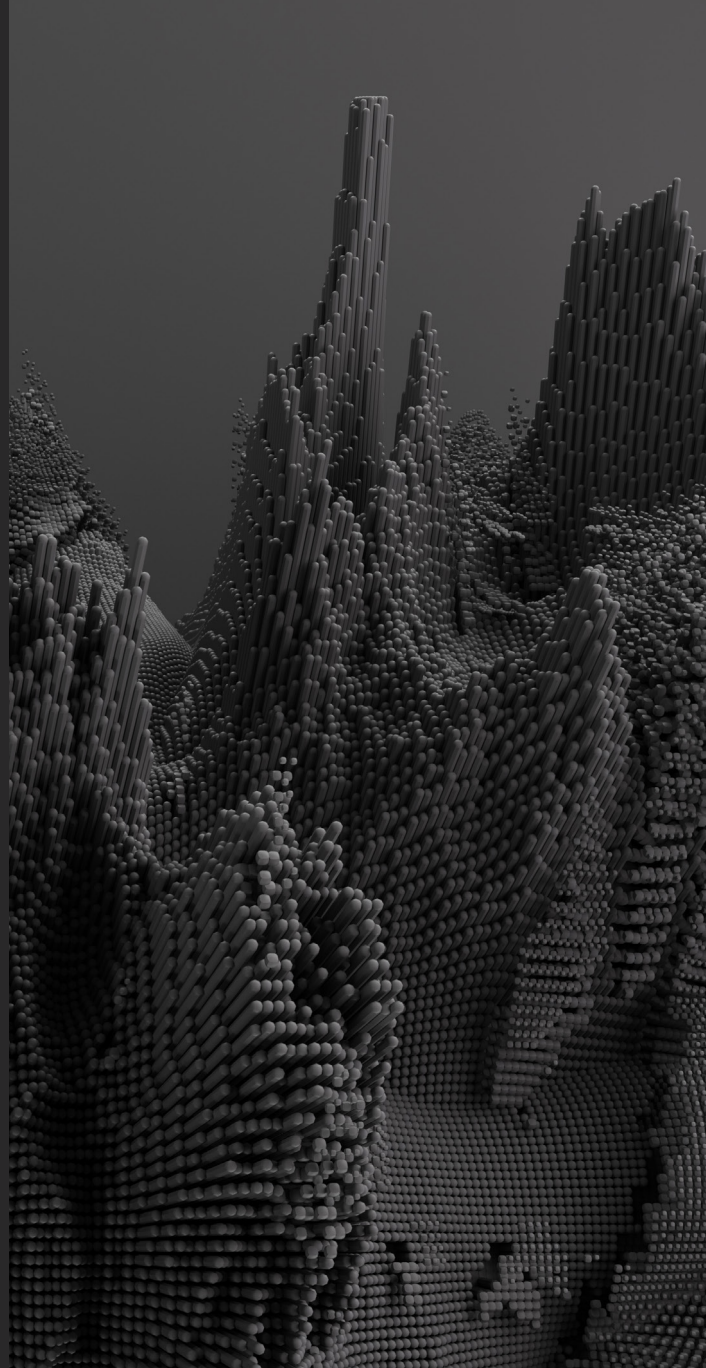
Eliminate layered consulting fees for a more direct, budget-friendly approach to high-quality data.

Own the Knowledge

Build and maintain a continuously updated intelligence resource, fully controlled by your team.

Information Access & Distribution

Enable seamless data sharing across departments, ensuring a unified and competitive edge.



We set ourselves apart through agile technology and deep industry specialization

Our state-of-the-art graph architecture and unlimited-user model ensure that your organization stays ahead of the curve by integrating emerging trends and technologies faster than traditional providers.

- / **Flexibility & Speed:** Our graph architecture lets us integrate new technologies or sectors faster than rivals.
- / **Vertical Depth:** We start deep in green hydrogen and renewable fuels - niches that others often gloss over.
- / **Scalable Access:** Our user philosophy frees your teams from restrictive, seat-based models, fostering an enterprise-wide data culture.

Roadmap: What's Coming Next

1 Adjacent Sectors

We're expanding coverage into green steel, chemicals, and carbon capture.

2 Digital Product Catalog













Starting with electrolyzer data sheets, we'll soon broaden our offering to include other cleantech components—enabling R&D teams to compare specs side-by-side.

We're continuously enhancing our platform to meet the evolving needs of the cleantech and industrial sectors. Our forward-looking roadmap is designed to expand our capabilities and deepen the value we deliver.

By choosing Delphi Data Labs, you're not only accessing cutting-edge data today - you're also partnering with a forward-thinking team committed to empowering your success tomorrow.

From ambitious cleantech ventures to global industrial giants, a growing number of organizations are adopting Delphi Data Labs for real-time, high-quality data.

Here is a selection of the clients we proudly serve.

“We encourage broad organizational access”

08

Unlike traditional providers that limit adoption through seat-based licensing, we encourage broad organizational access.

Our degressive pricing model reduces the per-user cost as more teams come on board, making it easier for everyone to benefit from data-driven insights.

Flexible subscription tiers

- / **Annual Subscriptions:** Recurring access to the Market Dashboard or the M&A Dashboard, complete with data updates and white-glove support.
- / **API Licenses:** Feed our data directly into your existing BI or AI tools (e.g., Palantir Foundry, Power BI) for seamless analytics.
- / **Project-Based Deliveries:** Get one-time data extracts for specific needs, though most clients prefer ongoing updates for maximum impact.

Our USPs

- / **Smart approach - High quality insights**
Traditional market intelligence platforms rely on costly, manual research, limiting scale and efficiency. Our AI-powered approach combines automation with expert validation to deliver high-quality insights faster, covering more data sources with greater accuracy.
- / **Lower costs - Greater impact**
Our degressive pricing model ensures affordability as adoption grows. Costs decrease as more users join, making it easy to scale market intelligence across the entire organization. This enables easy collaboration, informed decision-making, and a shared, data-driven culture - without the restrictions of per-seat fees.
- / **A Holistic Market View — Uncovering Patterns, Not Just Projects**
True Market intelligence goes beyond tracking isolated elements such as projects. Our platform integrates data from multiple angles, covering projects, companies, technologies, M&A activity, and more - to provide a comprehensive industry view. By connecting these layers, we deliver deeper context, uncover hidden patterns, and enable more strategic decision-making.

With this licensing approach, Delphi Data Labs delivers not just powerful data insights but also the freedom to share them widely across your organization. Our commitment to transparent pricing, flexible subscription options, and a proven track record of growth ensures you'll have the agility and confidence to thrive in a constantly evolving market.

“The operating system for industrial collaboration”

09

Delphi Data Labs is forging “the operating system for industrial collaboration”, beginning with green hydrogen and renewable fuels. As these industries digitize and decarbonize, accurate, scalable, and contextual data becomes mission-critical.

Why we'll stay ahead

1. **Core Data Ownership:** Our knowledge graph is our moat, giving us the agility to evolve with the market.
2. **AI Synergy:** As AI demands cleaner, richer data, we become an even more essential partner.
3. **Multi-Vertical Scalability:** Automotive, heavy machinery, aerospace - any industrial sector that needs real-time, relational data can benefit from Delphi..

Next steps

- ➔ **Request a demo:** See the Hydrogen & Renewable Fuels Market Dashboard in action.
- ➔ **Explore Our M&A Dashboard:** Discover how a segment-agnostic approach can transform your deal pipeline.
- ➔ **Talk to Our Data Experts:** Integrate Delphi's curated data streams into your existing AI or analytics platforms.

@ office@delphidata.com

www.delphidata.com

We look forward to helping you navigate the future of industrial markets - profitably, sustainably, and with data-driven confidence.

FOR MORE INFORMATION

delphidata.com

WHO WE ARE

Delphi Data Labs was founded in 2020 by a team of industry experts with a passion for driving the adoption of hydrogen as a clean and renewable energy source. Our mission is to help organizations navigate the rapidly evolving hydrogen market and make informed decisions about their investment and growth strategies.



Delphi Data Labs Gmbh
Stella-Klein-Löw-Weg 8
1020 Vienna
Austria

office@delphidata.com