

ssh • boards

...elt hordó 2. osztályú gyalulatlan
...ntesített 25/10cm borovi deszka



...széles alátétel társított süllyesztett
...csillagfejiű vélcaszfal elemet fa lótra

FOR THOSE SEEKING NATURAL AND DURABLE INSULATION!

Straw is a timeless, natural resource that has been reborn for modern architecture.

It offers exceptional thermal and sound insulation properties. Its excellent breathability ensures a healthier indoor environment.

No special expertise is required for its use, and it is easy for professionals to master.



APPLICATION AREAS

Thermal and sound insulation used in protected structures of buildings:

- On exterior and interior walls
- In wall structures
- In pitched roofs
- In slabs
- In floors



PRODUCT CHARACTERISTICS

Width: 100 cm ($\leq 1\%$)

Available in lengths of 50, 100, and 200 cm, with custom lengths also available ($\leq 1\%$)

Thickness: 7.5, 10, 12.5 cm (surface irregularity $\leq 1\%$)

Glass fiber mesh coating on one side

Thermal conductivity factor [λ – W/mK]: 0.046

Water absorption: 5 Kg/m²

Compressive strength [kPa]: 25-38

Flexural strength [kPa]: 0.5

Water vapor diffusion resistance factor, μ : 3.0

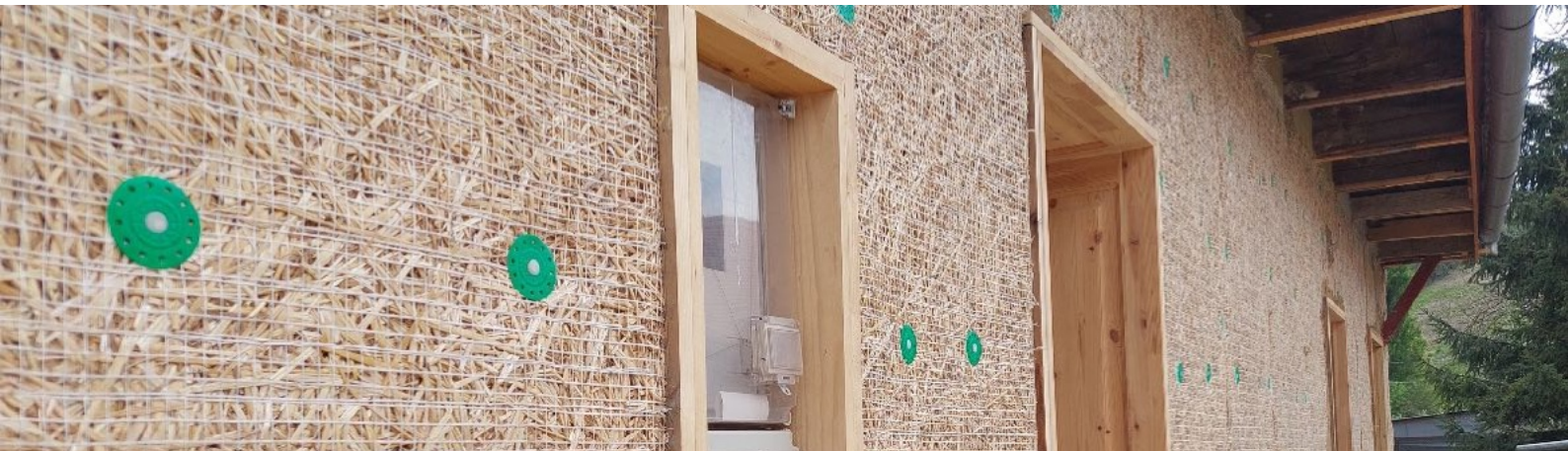
Density [kg/m³]: 85 \pm 10%

Airborne sound insulation R_w (-5; -12): 43

Fire behavior classification (without coating): F

Fire behavior classification (with coating): E

ETA - 24/0677 European Technical Assessment



FURTHER INFORMATION

Website: www.szalmapaplan.hu

[Facebook](#)

[Channel](#)

[Performance Declaration](#)

[Featured in Zöld 25 TV program](#)

[ETA - 24/0677](#)

HEADQUARTERS

Email: info@szalmapaplan.hu

Phone: +36 70 558 8888

