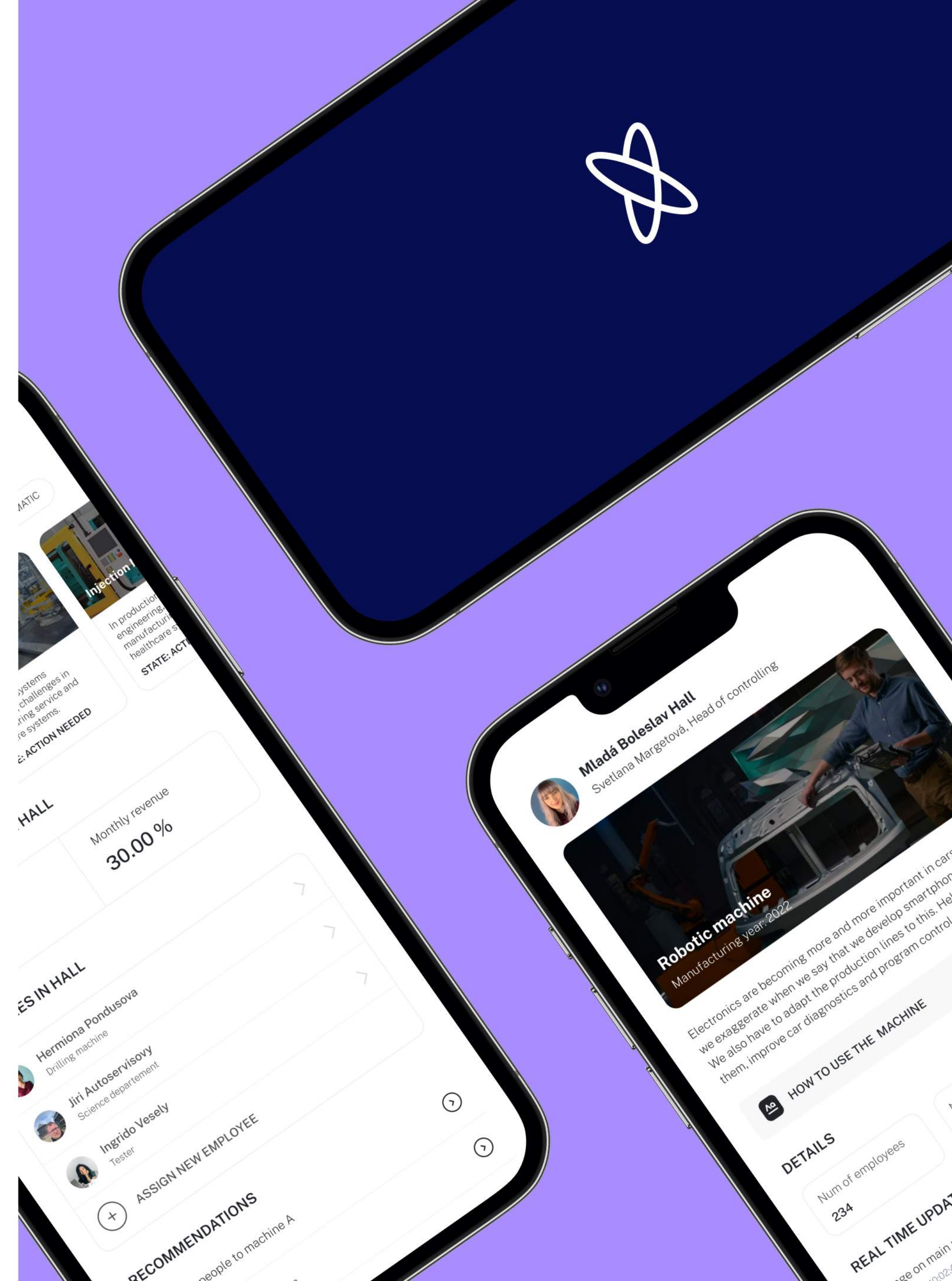



Boost productivity in manufacturing

using AI and data intelligence





Future of manufacturing

The integration of AI in manufacturing is not a distant future but a present reality.

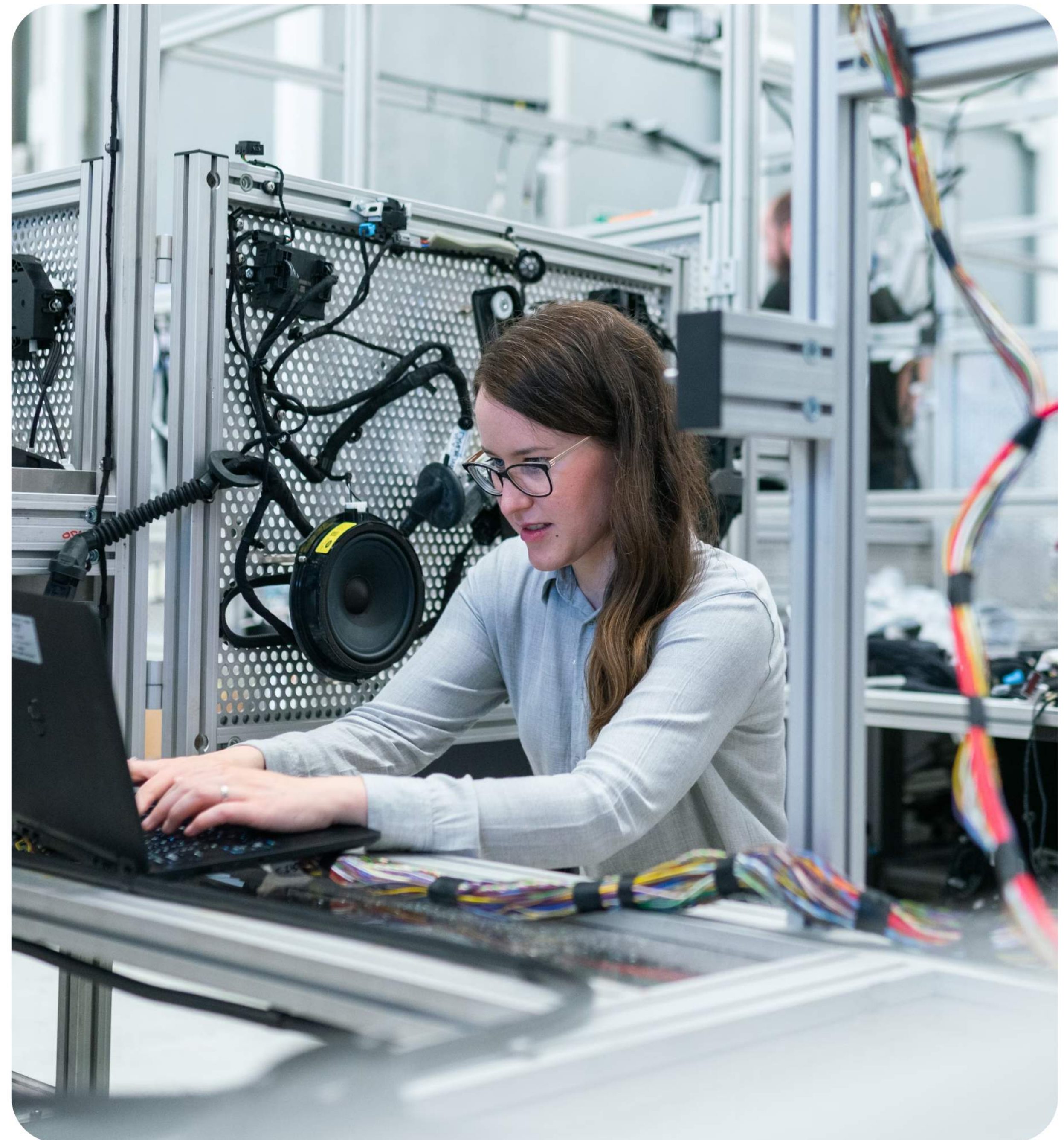
From predictive maintenance to supply chain optimization, AI technologies are profoundly altering the way manufacturers operate.

As we move forward, the collaborative efforts between humans and intelligent systems will create unprecedented opportunities for innovation, efficiency, and sustainable growth.

Current problems

The current problems can vary depending on the specific industry and context. However, some common challenges faced by manufacturers include:

- Inefficient processes
- Lack of real-time visibility
- High costs
- Quality control issues
- Repairs and support
- Limited agility and flexibility
- Integration challenges
- Human factor





Pharmacy

USD 1,123.1 Billion in 2022



Automotive

USD 2.86 Trillion



Telecommunication

USD 1805.61 Billion



Manufacturing

USD 14.83 Trillion in 2023

Solution for manager of the hall/link

As a manager i want to

- see revenue of my hall
- predictions and possible breakdowns
- see who works on what
- suggestions for automation
- see who controls what and when automatic

- Predict future outages
- See employee training and who knows who
- Manage onboarding process
- Manage external suppliers
- Recommendations what to do / smart decisions based on data
- Automatisation tips
- Who is on shift
- State of whole manufacture process

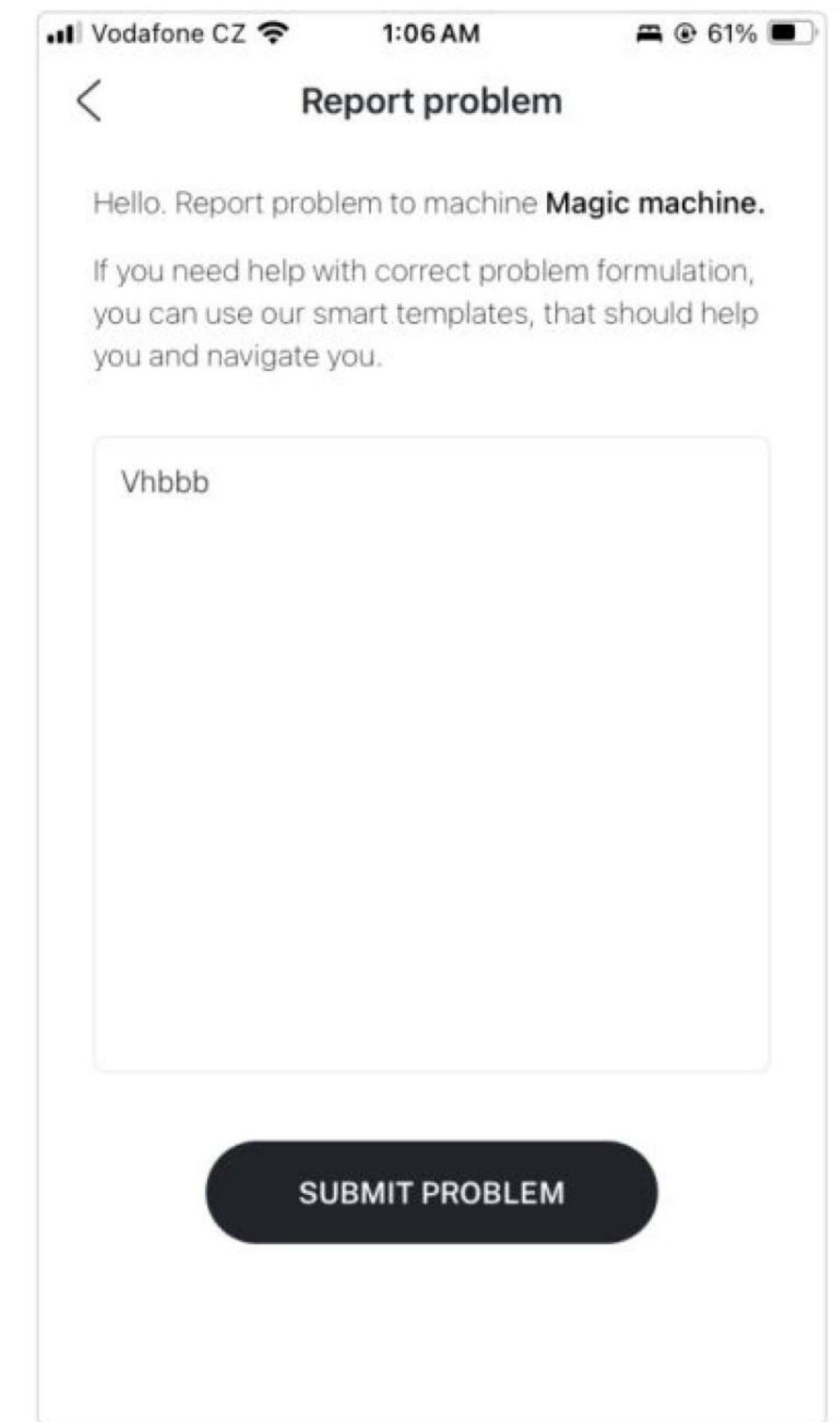
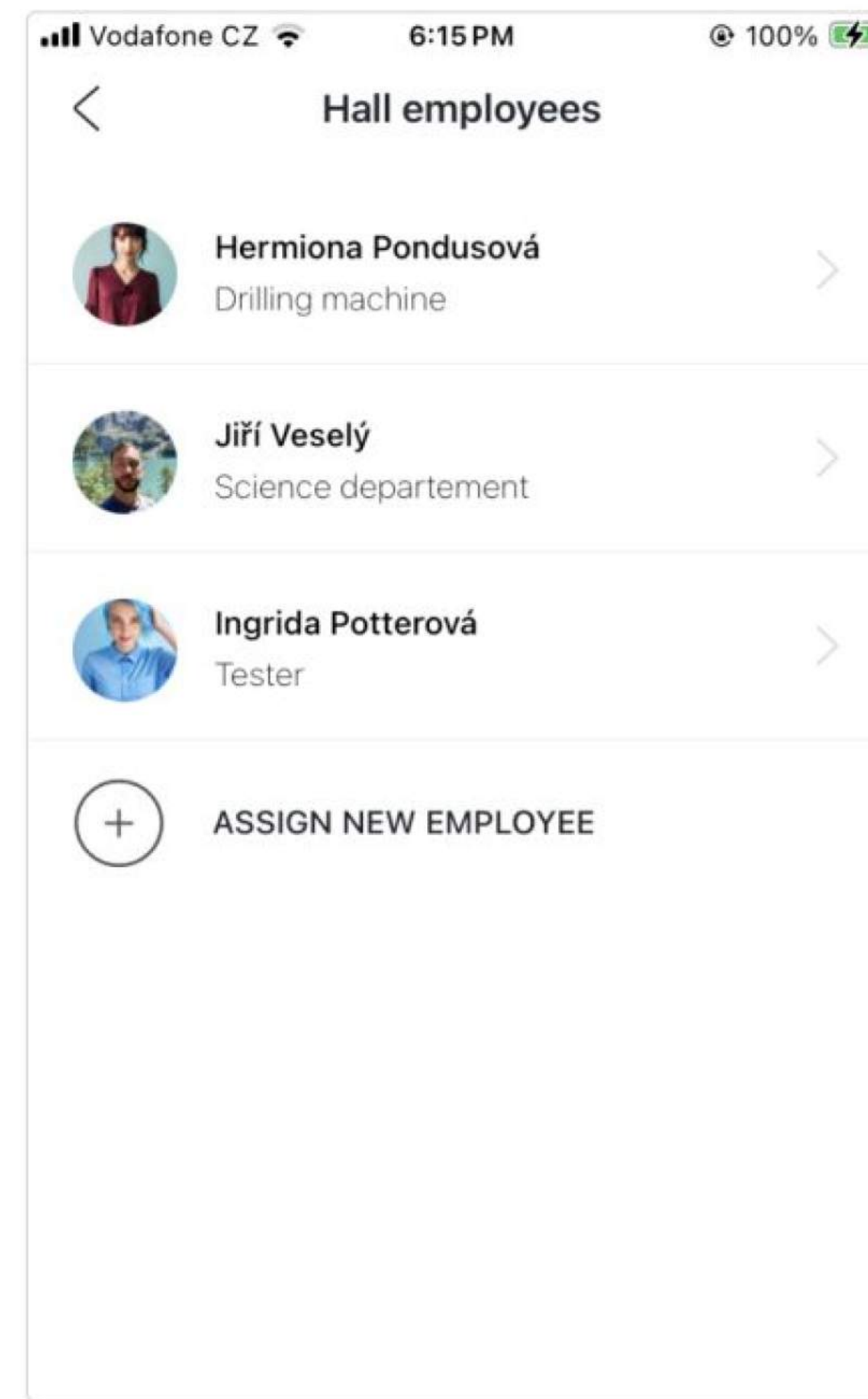
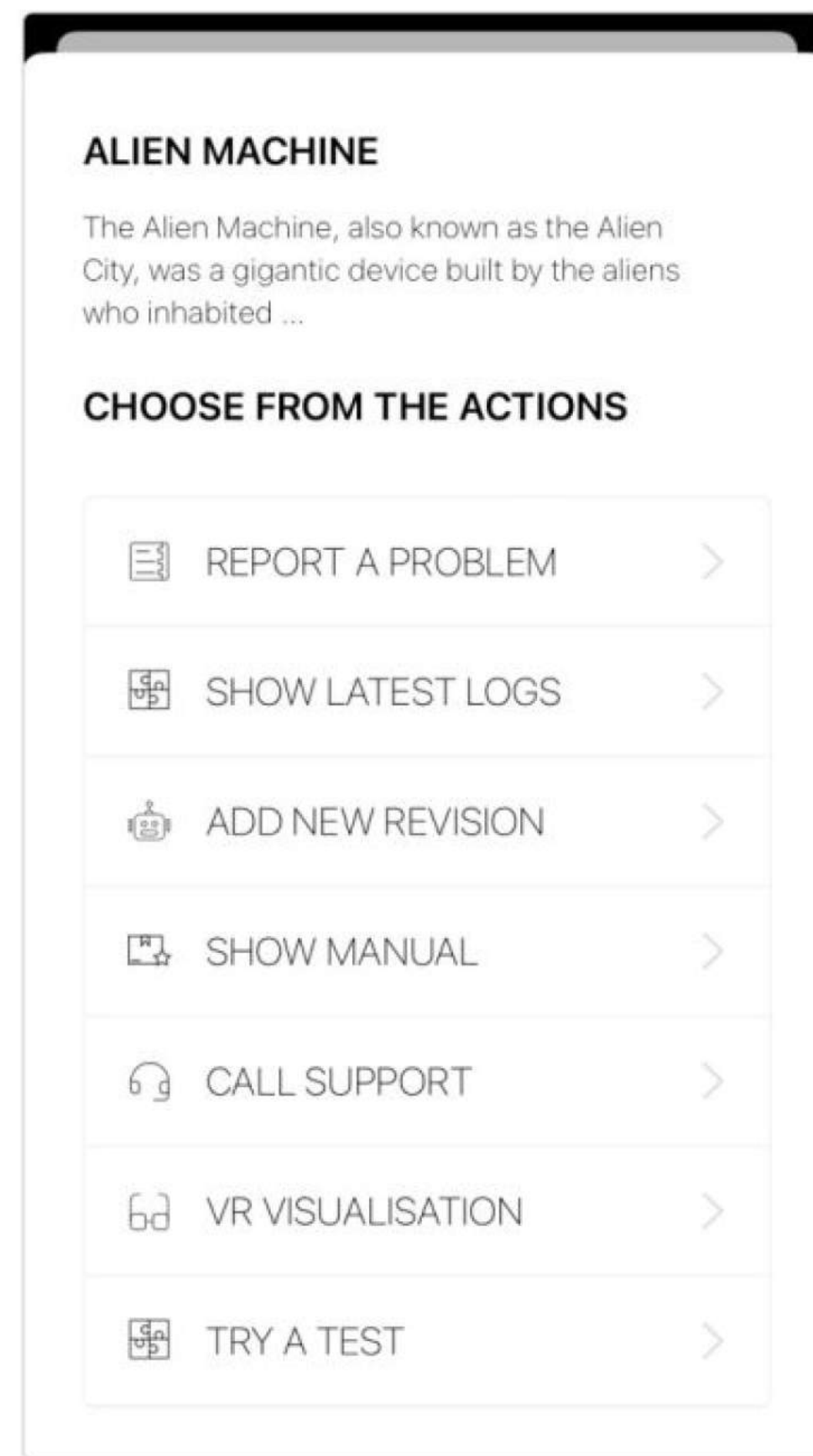
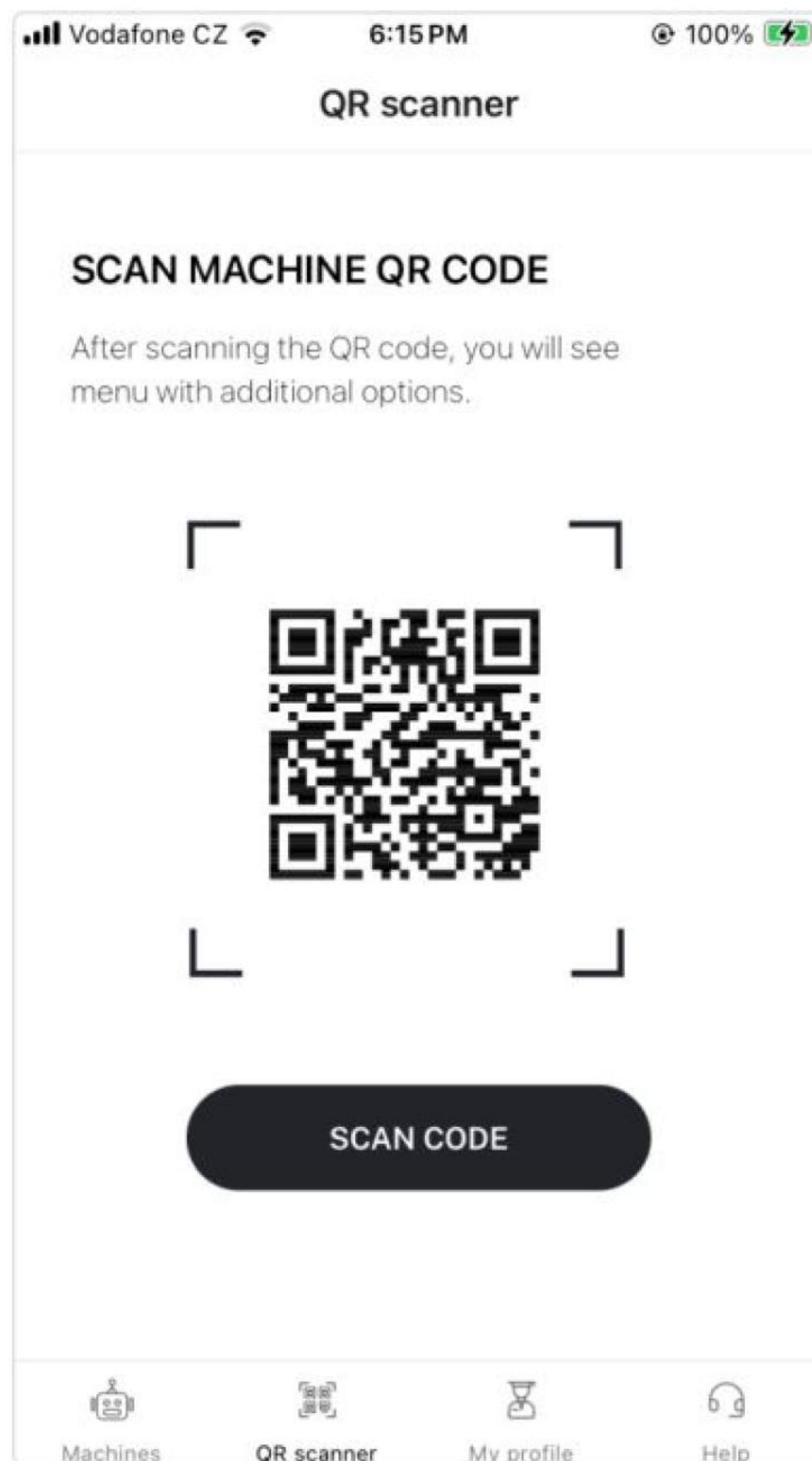
Solution for workers – in hall, in offline world

- Monitor state of the machine
- Show manual how it works, introduction video for a new employees
- Show current state of the machine, problems
- Add new problems
- Evidence and machine repair instructions
- Usage and logs
- Suggestions what to change, repair
- Real-time photo documentation from machine/world to server.

Innovative use-cases

- Share state from photo on machine
- Smart revisions with auto generated AI templates and forms
- Auto-generated FAQs and problem solving from manuals
- Suggestions for state management
- Suggestions for revenue and material planning
- Assign reported problem on responsible person
- Generate tips for automatisations

Focus on accessibility





What will it bring to the company?

Innovation can bring numerous benefits to a company, including

1. Save time and costs
2. Competitive advantage
3. Focus on innovations
4. Qualified employees
5. Focus on correct education
6. Better understanding of how things works and why we have problems
5. Never ending optimizations

Competitive advantage and save costs

95%

smarter decisions

100M

savings on breakdowns

+64%

industry growth

10X

faster reactions on
changes

Focus in education

65%


faster improvements

50%

less damage

40%

motivation

The background of the slide features a dark blue field with various light blue and white business-related graphics. At the top left, there is a circular logo with a stylized 'W'. Below it, a line graph shows a peak with the number '2663' above it. To the right, a silhouette of a person in a suit is shown. Further down, a bar chart with multiple bars is visible, with the number '100' on the y-axis. On the left side, there are concentric circles with percentages '78%', '87%', and '95%' next to them. The main title 'Business Model' is written in large, bold, white letters across the middle-left section.

Business Model

AWS like pricing model

6,000 EUR – 10 000 EUR / Month
Subscription includes:

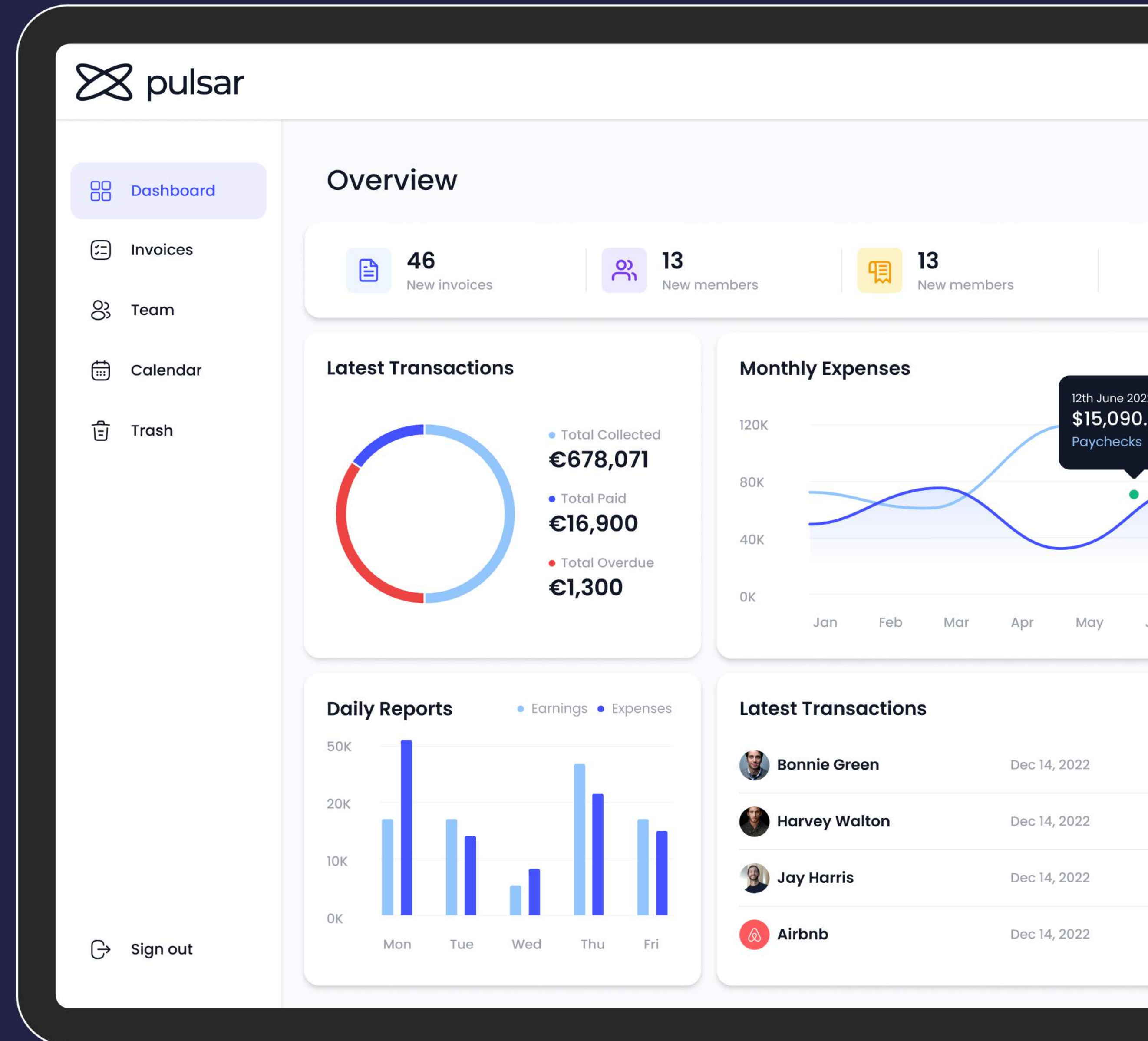
- Administration with dashboard
- Mobile app for workers and managers
- 50GB Storage of Machine Logs
- Reporting
- Single Sign-On & SAML + Support

Expected revenue - 1st year

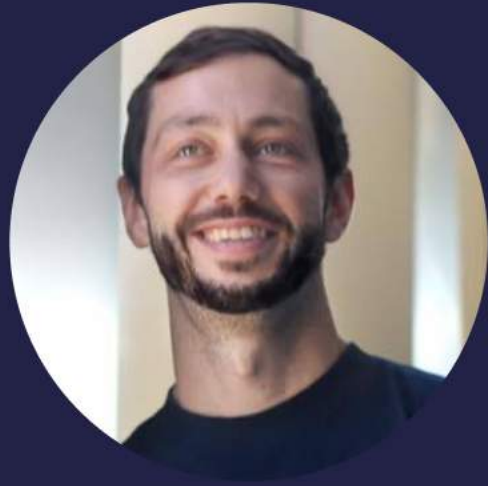
Month	Total Costs	Revenue	Net Profit/Loss	Optimistic Revenue	Net Profit/Loss	Cummulative
1	23,550	20000	-3,550	20000	-3,550	-3,550
2	23,580	20000	-3,580	20000	-3,580	-7,130
3	23,580	30000	6,420	50000	26,420	19,290
4	20,995	30000	9,005	50000	29,005	48,295
5	29,825	30000	175	70000	40,175	88,470
6	25,258	60000	34,743	100000	74,743	163,213
7	37,058	60000	22,943	105000	67,943	231,155
8	35,090	70000	34,910	110000	74,910	306,065
9	33,820	70000	36,180	115000	81,180	387,245
10	37,985	80000	42,015	120000	82,015	469,260
11	40,300	90000	49,700	125000	84,700	553,960
12	31,875	100000	68,125	130000	98,125	652,085

Join pilot and gain with us

- be first implement this solution based on your needs
- test with us scalability
- gain 1 year free support of the platform
- consultation and education
- add your own ideas that covers your use cases



Our team



Jay Surovy

Business Development Manager

14 years of profesional experience in the software development industry. Worked with companies such as Intel from San Francisco, Silicon Valley startups and companies from other parts of the world



Svetlana Margetová

Full-stack dev + AI & ML engineer

Svetlana is an architect level developer. She has been actively involved in many startup communities and led development in many projects throughout her career. She also holds Master's degree in Computer Science and many certificates in software development



Doniyor Jurabayev

Full-stack dev + AI & ML engineer

Doni has been a professional developer since 2008. He has participated on many projects and started his own startups in the past. He has passion for complex and useful solutions



Eroll Arapi

UI/UX designer

Eroll has been crafting elegant user interfaces for many years. His penchant for intuitive and visually appealing solutions drives him to continually hone his skills

Thank you

Contact

svetlana@pulsar-ai.com

+420 725 423 538

Website

pulsar-ai.com

