

DIGITAL TWIN @ ASFINAG



A|S|F|i|N|A|G
GUTE FAHRT, ÖSTERREICH!



26.3 BILLION

km of total traffic per
year

2,249

kilometres of road
network

42

Motorway operation
and maintenance
facilities

~3,000

Employees

6

Toll stations

9

Traffic management
centres



~3,000
Employees

6
Tunnel tolling stations

9
Traffic management
centres

26.3 BILLION

km of total traffic per
year

2,249

kilometres of road
network

42

Motorway operation
and maintenance
facilities

TO 2030 AND BEYOND

DIGITISATION

*for an exact
network status
at all times*

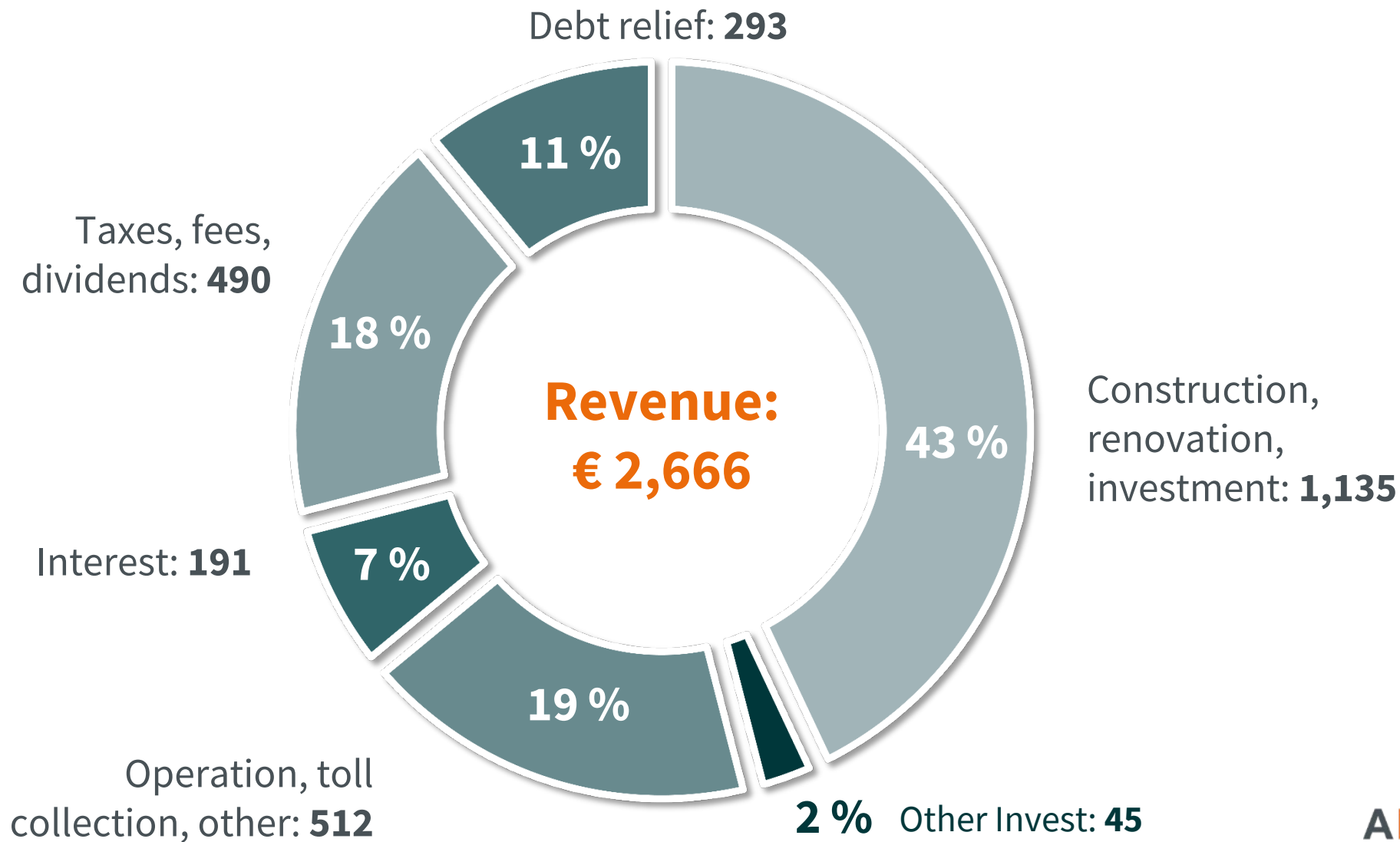
ENERGY SELF- SUFFICIENCY 2030

*by construction of 100 MWp
renewable energy plants*

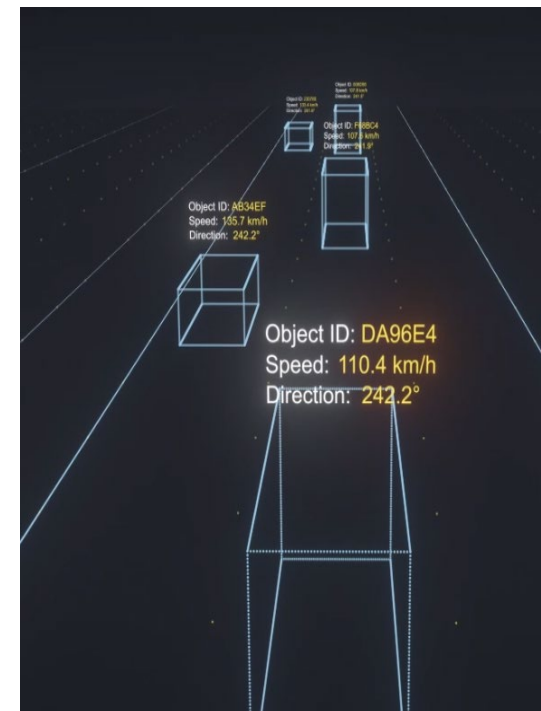
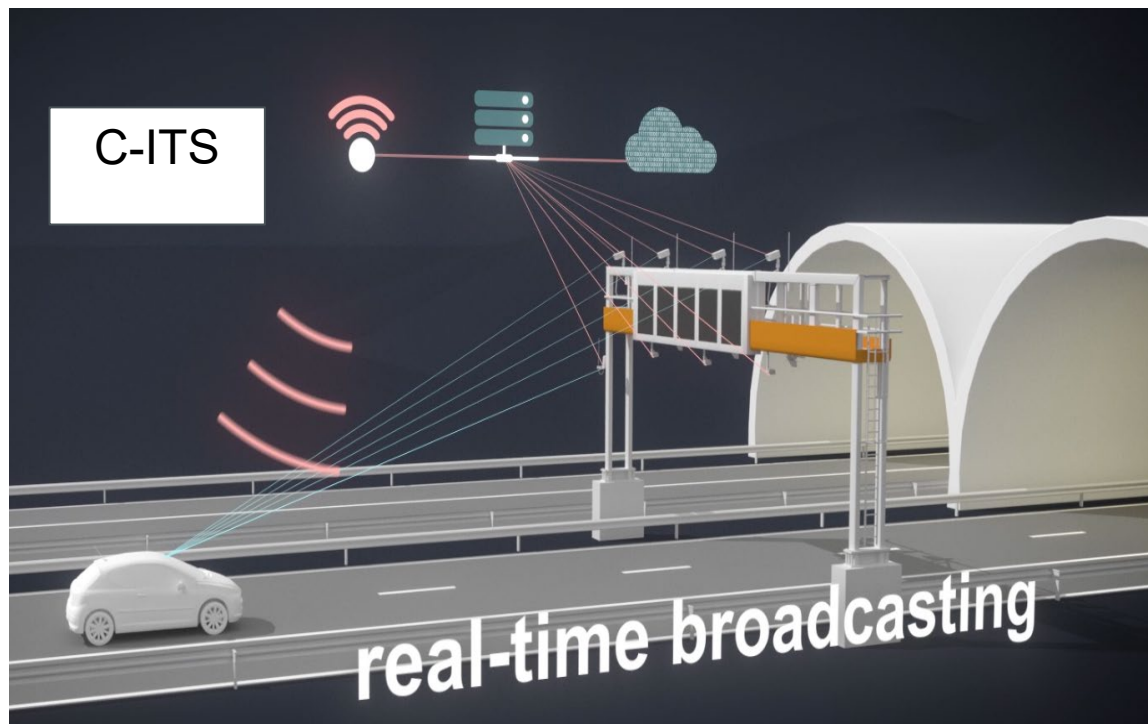
TRANSFORMATION

*to becoming a
Mobility Partner*

HOW ASFINAG USES ITS REVENUE (In million Euros)



COOPERATIVE ITS

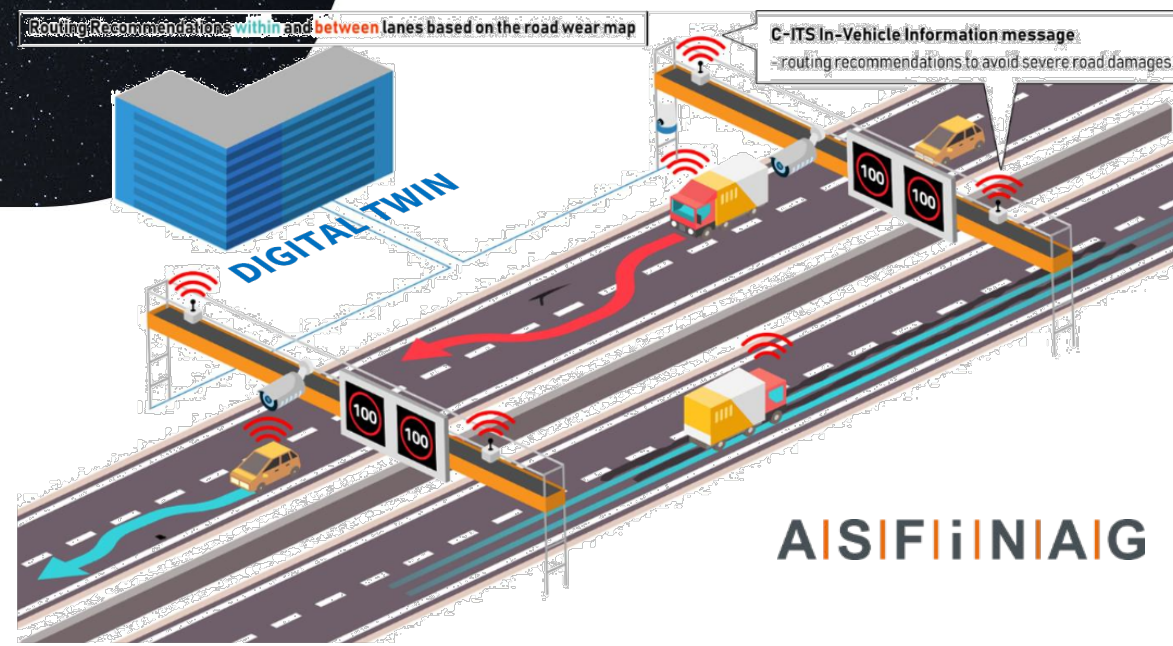


- 📍 Vehicle sensors are susceptible to light-dark transitions and radar reflexions
- 📍 ASFINAG uses sensor data at the location (camera, lidar, radar) and sends fused objects using C-ITS to approaching automatic vehicles
- 📍 Pilot project to send out C-ITS messages at tunnel entry completed



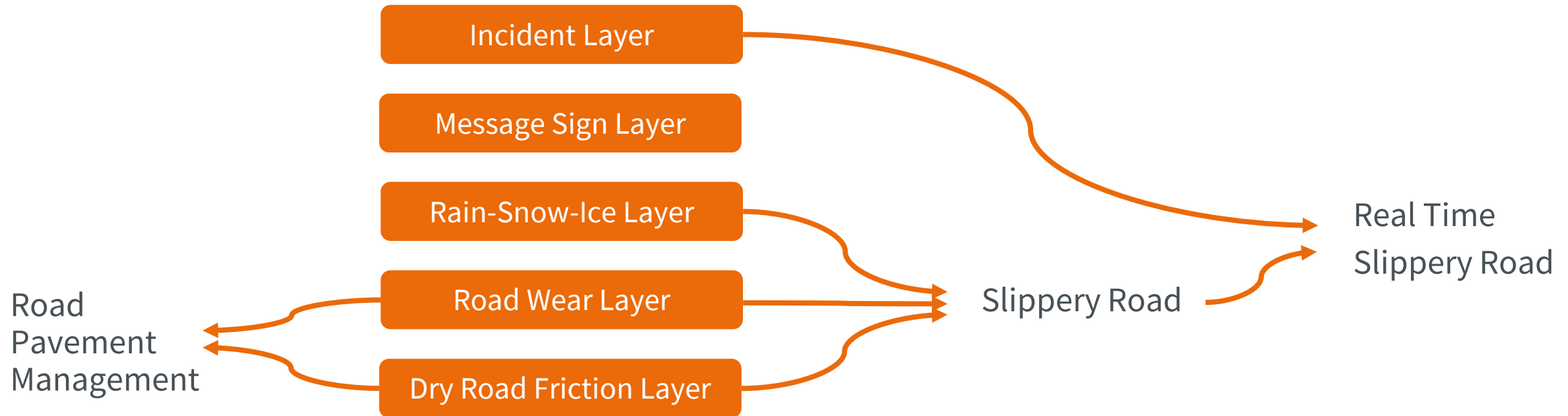
Booth: ZONE C1, OCTAGON
 10:35-13:00

www.esrium.eu

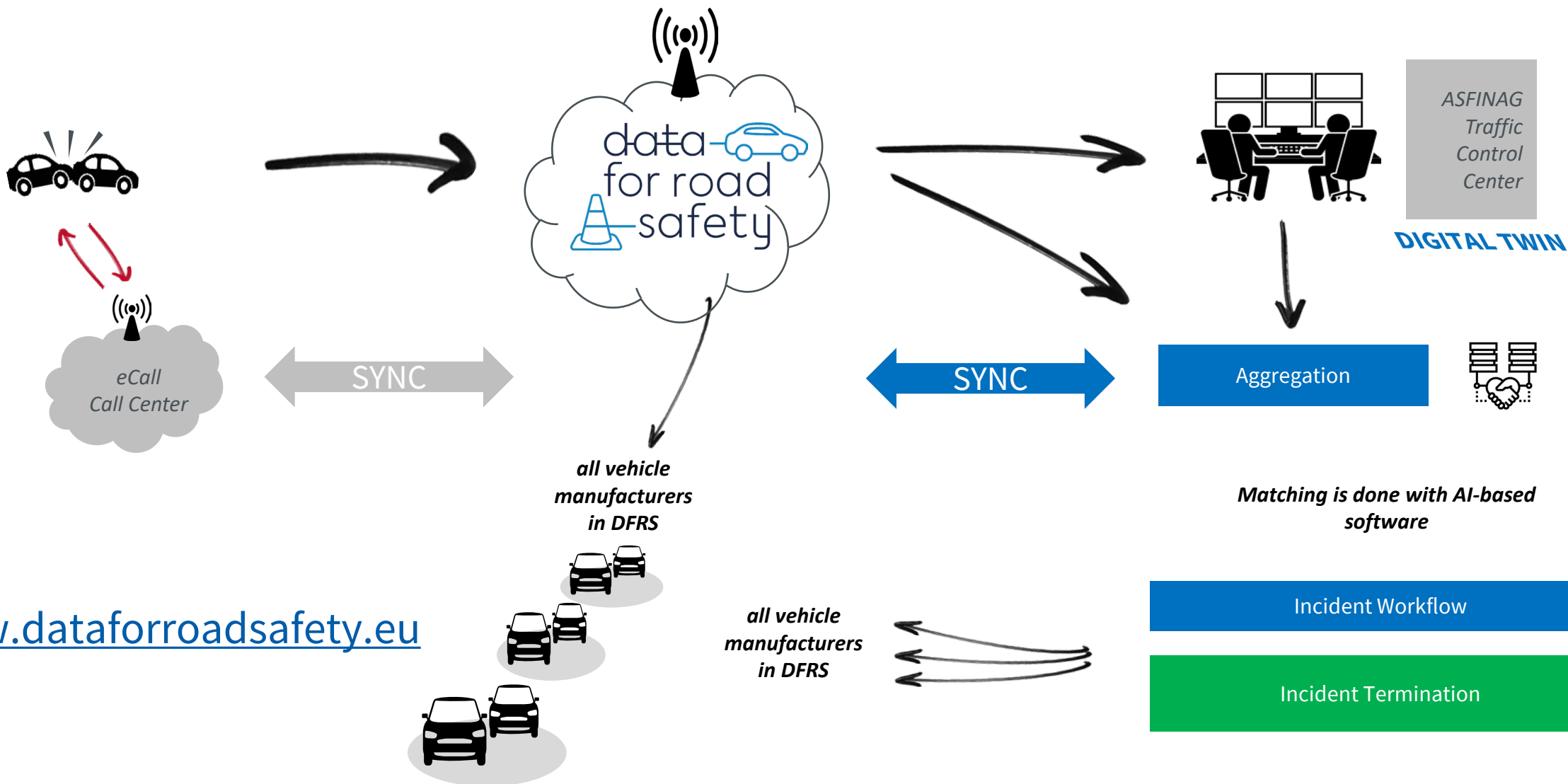


- 📍 DIGITAL TWIN holds dangers
- 📍 Mobile transmission to vehicles
- 📍 Precise Positioning with EGNSS

DIGITAL TWIN CONCEPT



DATA FOR ROAD SAFETY



www.dataforroadsafety.eu

QUESTIONS?

WE WILL GLADLY RESPOND!

asfinag.at



Gottfried Allmer

Service Manager Content

ASFINAG Maut Services GmbH

gottfried.allmer@asfinag.at

+43 (0) 50108 124551

A|S|F|i|N|A|G

GUTE FAHRT, ÖSTERREICH!