

# New European Bauhaus

## Webinar on values and working principles

**May 4th, 2023**

*Facilitators:*

Benedetta Buccolini (ICLEI Europe)

Małgorzata Ćwikła (ICLEI Europe)

Cristina Garzillo (ICLEI Europe)

Christine Lunde Rasmussen (Ramboll)

*Guests:*

Rita Campos (project owner in Portugal)

Jurijs Grizans (project coordinator in Latvia)



New European Bauhaus  
beautiful | sustainable | together



*"At first I thought I understood the values and working principles of NEB well, but over time I understood less and less, although these are seemingly obvious terms".*

# 3.NEB - local voices

# Local experiences

## NEB values:

- How did you apply NEB values in your project?
- What are key learnings? benefits/challenges etc.

## Looking forwards:

- How will you anchor NEB values in your project going forwards?
- Could the NEB values be amended?



Rita Campos -  
Urban and  
architecture  
Team Leader  
(Portugal - Horta)



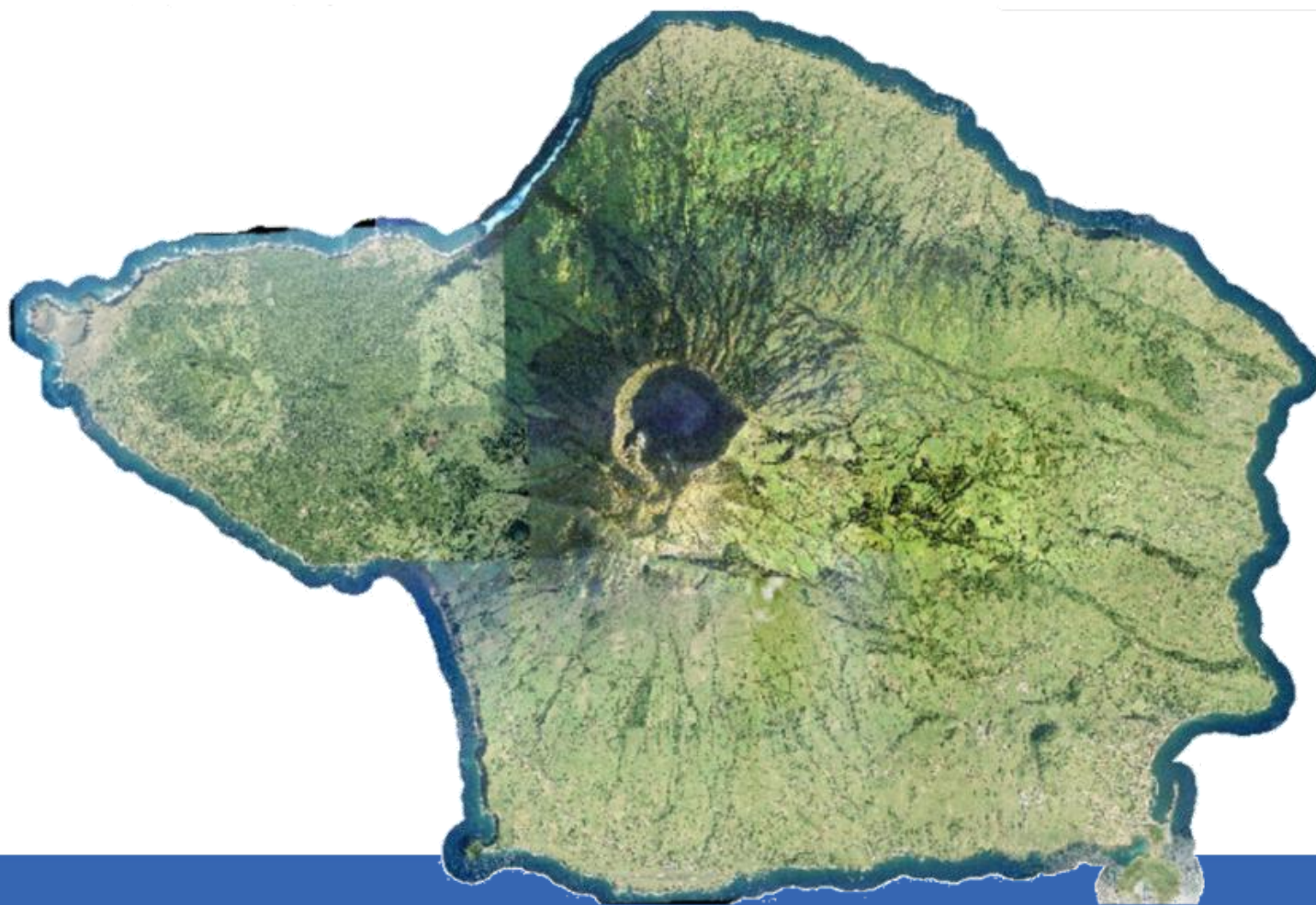
Jurijs Grizans  
Project  
coordinator in  
Latvia, Cēsis  
Municipality

# NEW EUROPEAN BAUHAUS

An overview of the twenty beneficiaries







New European  
Bauhaus 



*A flexible, sustainable, and beautiful platform for arts and give voice to the community so that it becomes the islanders connecting place, combining physical and virtual interaction.*

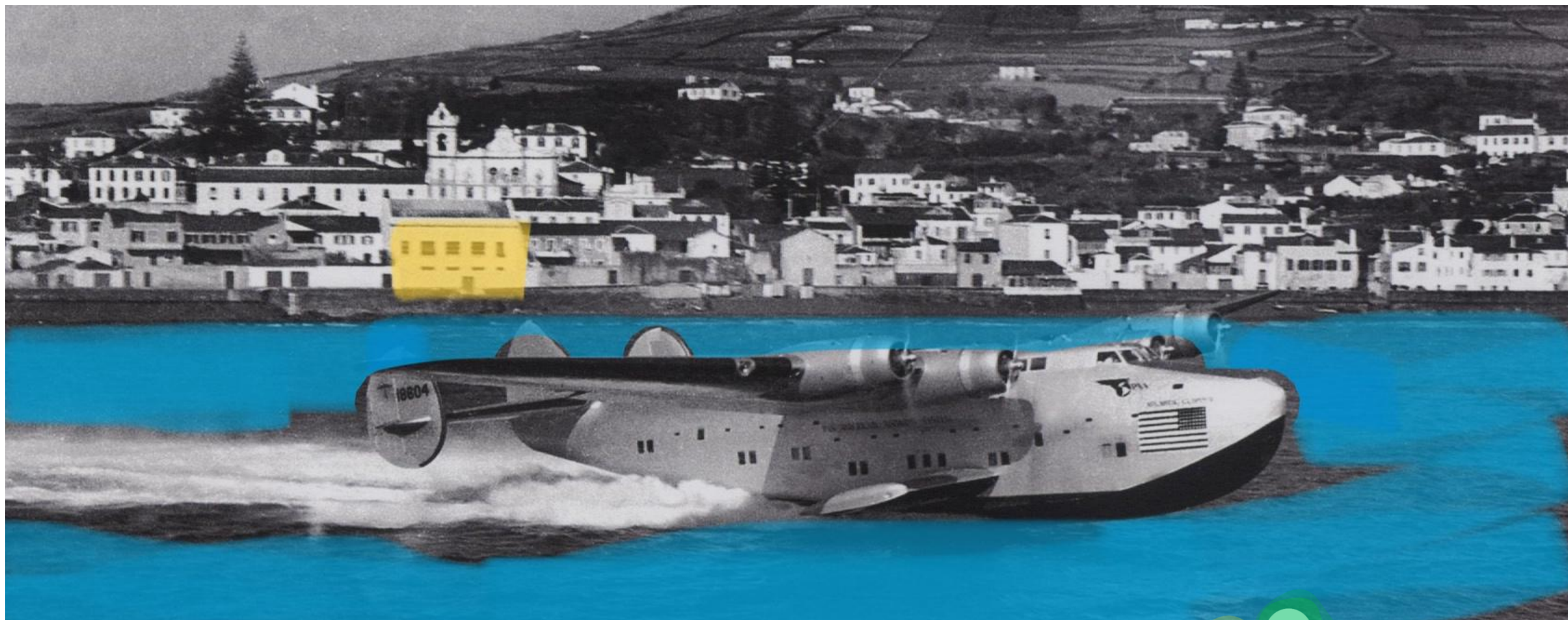
*This insular arts hub will bridge silos between transdisciplinary projects and people as a beacon to inspire new ideas, new social economy skills and to reconnect with nature (Azorean great natural heritage).*





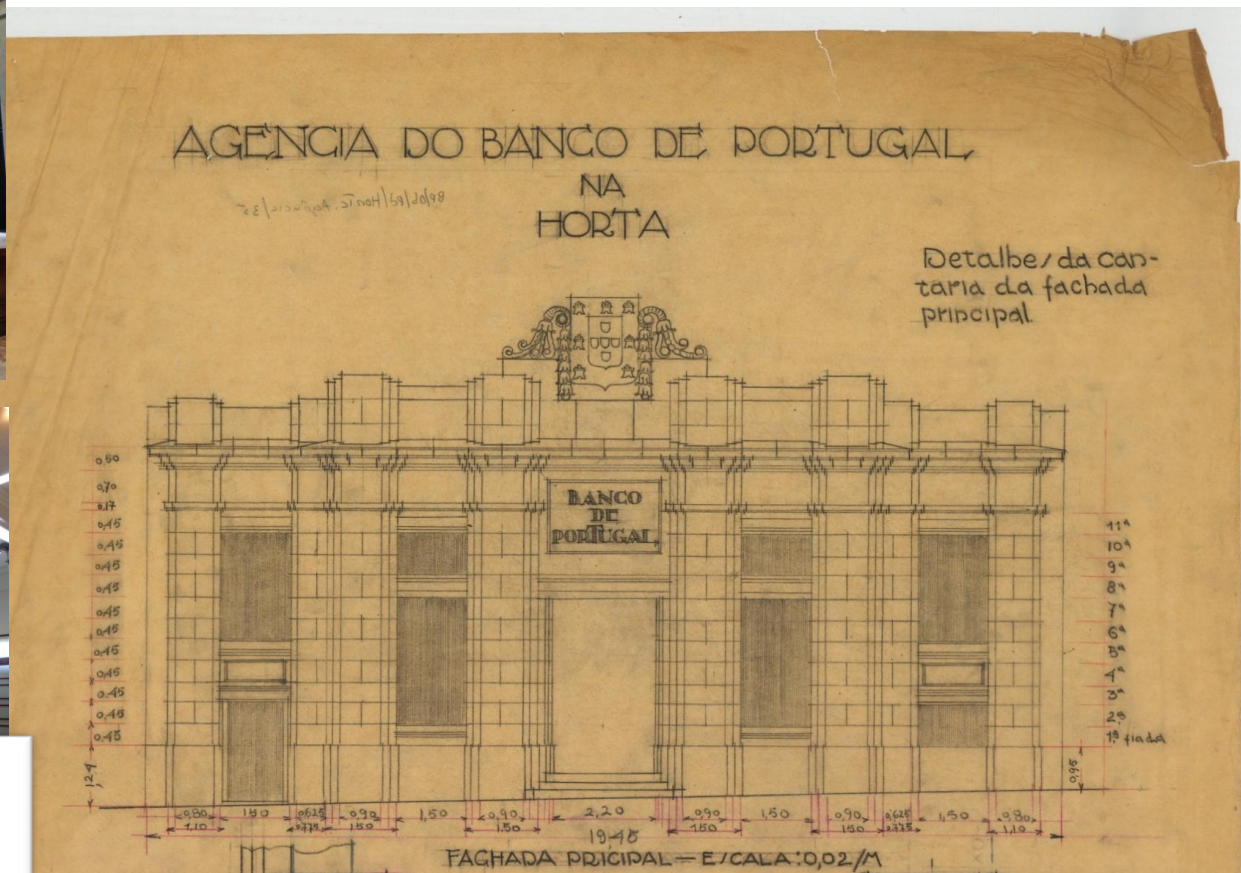






New European  
Bauhaus 





New European  
Bauhaus 







## Stakeholders

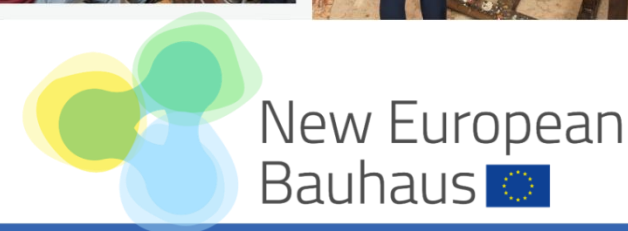
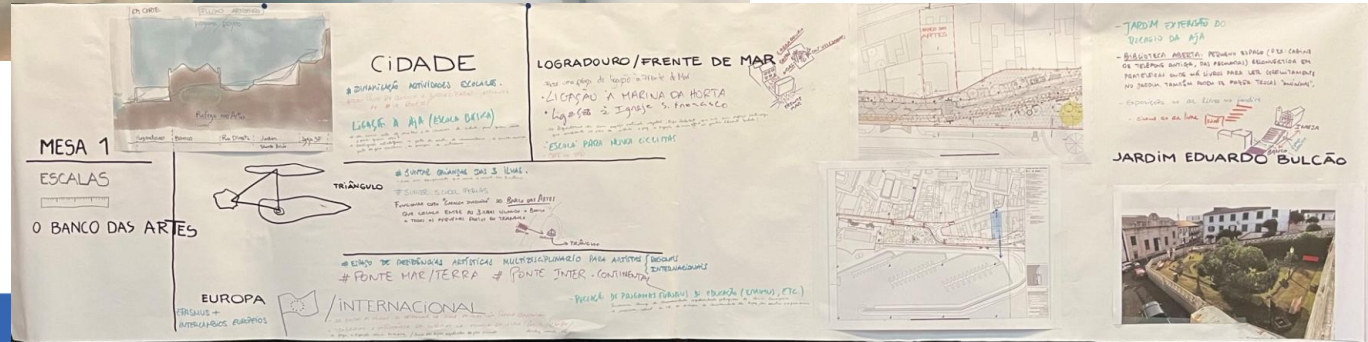
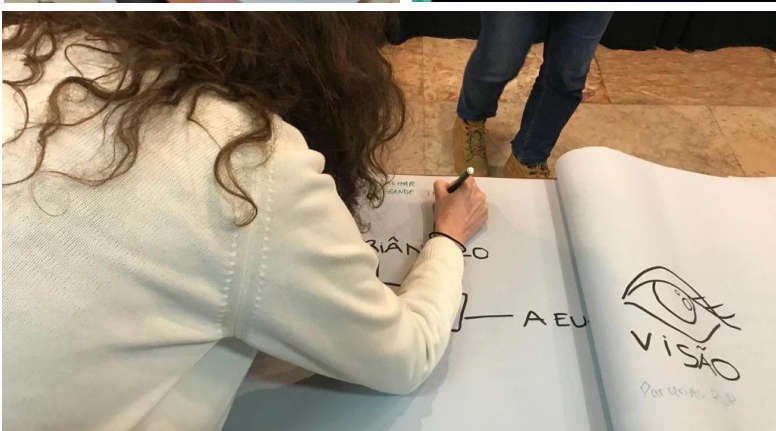
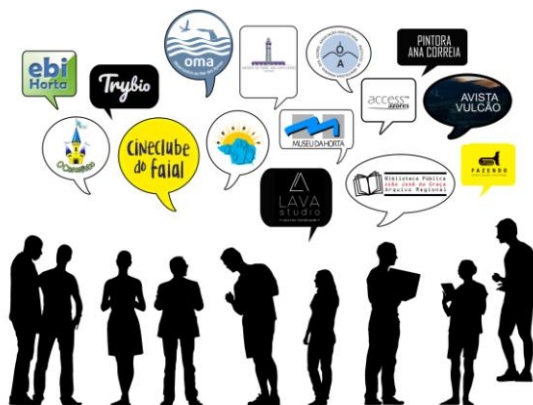


New European  
Bauhaus 







# Stakeholders engagement







## Business model and financing database

 New European Bauhaus beautiful   sustainable   together 										
	Grant Rate	Project funding available	Consortium size	Opening Date	Closing Date	Themes funded	Sample of eligible activities	Call Frequency	Project Duration Months	Eligible partner location
<a href="#">European Urban Initiative</a>	80%	15 million	Main applicant, delivery partners (cross-sectoral quadruple helix) + 3 transfer partners in other countries	mar/23	ago/23	Greening Cities Sustainable Tourism Harnessing Talents	Further information in the coming weeks	Call 3 at the end of 2023; Call 4 in late Spring 2024.	42 max	EU member states
<a href="#">European Urban Initiative Capacity Building (City to City Exchange)</a>	n/a	Travel, accommodation & subsistence for up to 4 people from applicant city.	n/a	03.04.23	17.11.23	Sustainable Urban Development Capacity building for public authorities	City to City exchanges: brings together an urban authority facing a specific implementation challenge related to SUD ("the applicant") and another urban authority from a different EU Member State with expertise to help tackle this challenge ("the peer") short, quickly implemented visit designed by the applicant according to their needs.  Aims to improve capacity of the applicant to tackle the identified SUD challenge through peer learning. Costs cover an incoming visit (peers travel to applicant city and an outgoing visit where the applicant travels to the peer city (2-5 days per event). EUI can provide expert facilitator to support exchange. EUI can facilitate contact with urban authorities involved in UIA / EUI - Innovative Actions and the Urban Agenda for the EU. A peer search platform will be developed on Portico in the long-term		All exchanges completed within 5 months of approval	EU cities
<a href="#">UEBACT</a>	TBC in call text. Call funded developed regions at 80%	1050 000	8 - 10	Q4 2023		Sustainable Urban Development Capacity building for public authorities	Action planning Good practice transfer; Innovation transfer - transferring successes from Urban Innovative Actions projects & developing an investment plan to implement it	Likely EUI-related transfer network: call Q4 2023 and regular transfer network: call Q1 2024	30	EU 27, Norway, Switzerland, Alb Montenegro, Serbia, h Macedonia, Bosnia-Herzegov

## HANDBOOK

04 ■ 2023



# FIAB GUIDE BOOK

A partir do conteúdo coletado no Caderno de Reflexões, bem como de discussões prévias com o Dream Team em Horta, propõe-se a distribuição do programa sugerido a partir dos diagramas abaixo.

Múltiplas sugestões são listadas para os cômodos uma vez que o conteúdo oferecido no Caderno apresenta possibilidades bastante interessantes e viáveis a depender da adequação física do edifício.

- A. 1x Espaço multifuncional
- B. Espaços para residências artísticas e culturais
- C. 1x Café / bookshop / bar
- D. 1x Coworking
- E. 1x Studio multimedia
- F. Espaços para arrendamento / locação
- G. Jardim do terraço

**Proposal for opening up to semi-public circulation**  
Proposta de abertura para circulação semi-pública



## Piso Patio

From the content collected in the *Caderno de Reflexões*, as well as from previous discussions with the Dream Team in Horta, it is proposed to distribute the program according to the diagrams below.

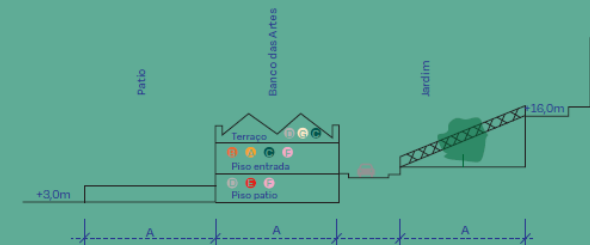
Multiple suggestions are listed for the rooms, since the content offered in the Cademo presents quite interesting and viable possibilities depending on the physical adequacy of the building.

- A. 1x Multipurpose area
- B. Spaces for arts and culture residencies
- C. 1x Cafe /bookshop /cocktail bar
- D. 1x Coworking
- E. 1x Multimedia studio
- F. Spaces for rent / lease
- G. Green roof

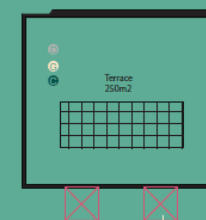
**Proposal for opening up to semi-public circulation**  
Proposta de abertura para circulação semi-pública



## Piso Entrada



### Corte esquemático



## Terraço



New European  
Bauhaus 





As utilizações de divisórias autoportantes nos espaços possibilita que as mesmas cumpram múltiplos usos (expositores, sinalização, etc).

*The use of self-supporting partitions in spaces allows them to fulfill multiple uses (displays, signage, etc.).*



A mobília também pode ser cumprir múltiplas funções, ao mesmo tempo que pode ser usadas em diversos cômodos distintos. É importante se pensar na facilidade de transporte e armazenamento, montagem e desmontagem.

*The furniture can also fulfill multiple functions while being used in many different rooms. It is important to think about ease of transport and storage, assembly and disassembly.*



New European Bauhaus 





## Main experts and dream TEAM

### "DREAM TEAM"/equipa multidisciplinar do BA:

Vereadora Maria Antónia - CMH  
Dr. Rui Martins - Urbhorta  
Rita Campos (arquiteta e "team-leader")  
Francisco Botelho (marketing e gestão),  
Tânia Maciel (engenheira civil e Chefe de Divisão de Desenvolvimento e Gestão Urbanística),  
Arnaldo Raposo (urbanismo),  
Cláudia Ávila Gomes (arquiteta paisagista)  
Cláudia Naia (jurista),  
Paula Saraiva (animadora cultural),  
Carla Vieira (design e apoio administrativo),  
Ricardo Costa (desenhador e Tec. da construção civil)  
Bruno Carvalho (iluminação)  
José Sousa (som)  
Fátima Silveira (eng.<sup>a</sup> do ambiente),  
Carlos André (candidaturas e procedimentos)





Bright  
ideas.  
Sustainable  
change.

The Ramboll logo consists of the word "RAMBOLL" in a bold, sans-serif font, with a stylized blue lightning bolt icon integrated into the letter "O".