



# **SUPER INTELLIGENCE** **FROM SPACE**

**Gaetano Volpe – CEO**

[www.latitudo40.com](http://www.latitudo40.com)







# PROBLEM: UNUSED DATA

< 20%

Earth Observation data used

€400 B/yr

Infrastructure damages for lack of data-to-decision path

+40%

Time to take decisions on urban planning

**Climate data are vast and complex.**

**We simplify, refine, and make them  
accessible for everyone**

# SOLUTION: FROM IMAGES TO ACTIONABLE INSIGHTS



RAW DATA  
FROM SPACE

+



OUR AI  
PIPELINE

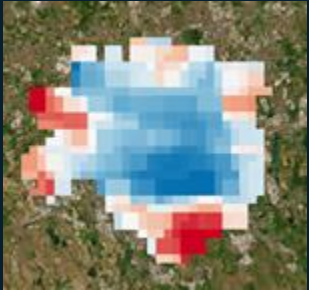
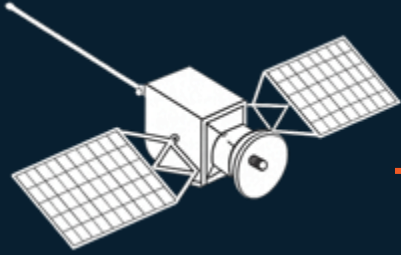
=



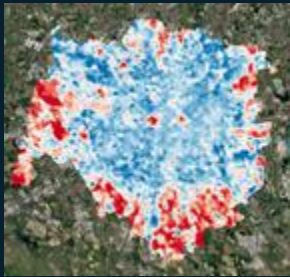
ACTIONABLE INSIGHTS  
& SIMULATIONS

# SOLUTION: EARTH THERMAL DATA EVOLUTION

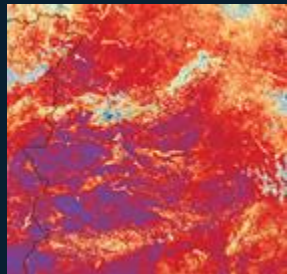
*The first virtual constellation for Agriculture, Urban and Infrastructure resilience*



Modis  
Milan



Landsat  
Milan



Sentinel-3  
Milan



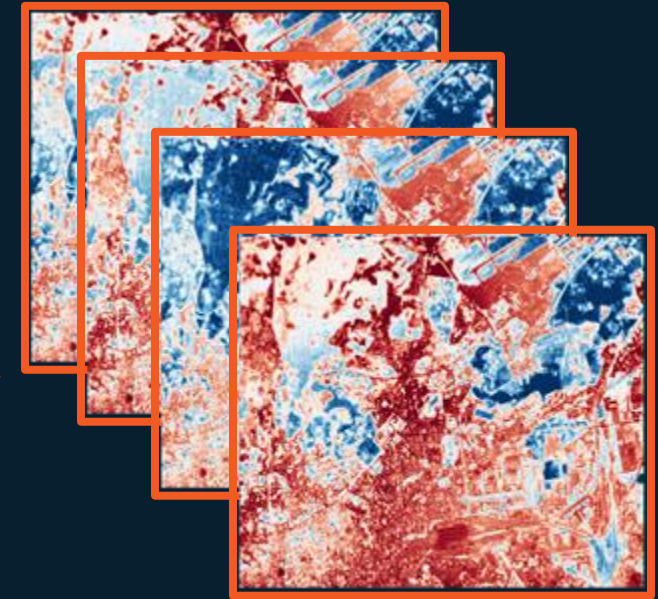
Sentinel-2  
Milan

**LOW frequency or LOW resolution**



EARTH THERMAL DATA<sup>®</sup>  
AI PIPELINE

**HIGH frequency and HIGH resolution**



**Land Surface Temperature  
up to 4 times a day  
Everywhere in the WORLD**



# SOLUTION: AI-BASED SUPER-RESOLUTION

*10x smarter decision, pixel by pixel*



10-meter



1-meter



Hi-res imagery  
€20/km<sup>2</sup>  
OUR PRICE  
€2/km<sup>2</sup>  
(-90%/km<sup>2</sup>)

# SOLUTION: BUILDING BLOCKS OF PLANET RESILIENCE

LAND SURFACE  
TEMPERATURE



CARBON  
STORAGE



URBAN  
HEAT ISLANDS



TREE  
COVER DENSITY



HEATWAVE  
RISK



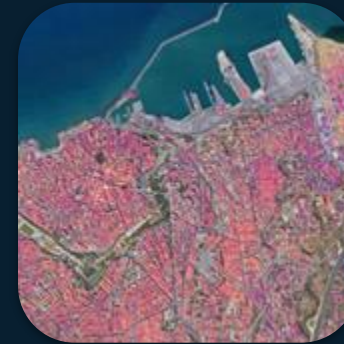
FLOODING  
RISKS



MICROCLIMATIC  
PERFORMANCE INDEX



PHOTOVOLTAIC  
POTENTIAL INDEX



**+12  
MORE  
DATA**



# SOLUTION: PREDICTING FUTURE SCENARIOS

*Predicting tomorrow's outcomes today with*  EARTHDATAINSIGHTS

Alternative interventions



Current situation



Predicted outcomes



SYNTHETIC SATELLITE  
IMAGE INCORPORATING  
THE CHANGES










LAND SURFACE  
TEMPERATURE

# OUR CUSTOMERS AND TRACTION





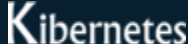





€0.55M	€0.93M	€1,7M	\$3,8M
2022	2023	2024	2025 (PROJECTED)
13 customers	22 customers	40 customers	75 customers





DIGITAL CITIES



SYSTEM INTEGRATORS

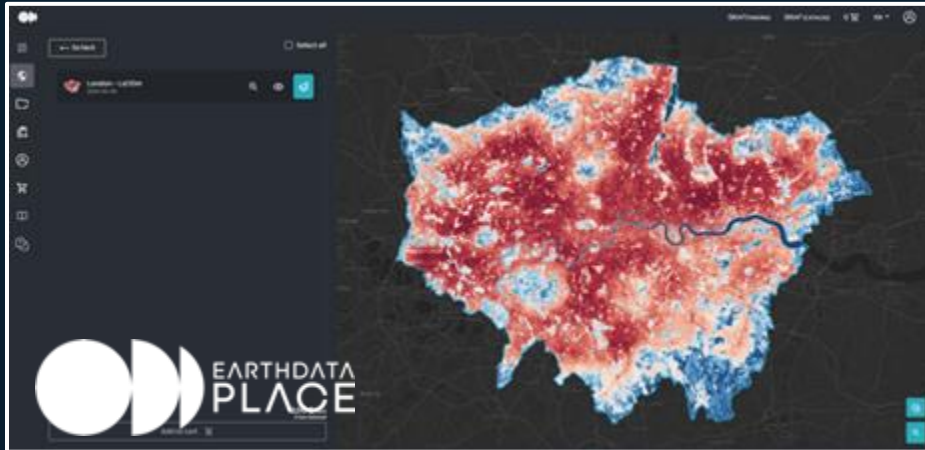


REAL ESTATE





## DATA MARKETPLACE



**PAY per USE x SqKm Vs  
Annual Subscription**

## SUPER INTELLIGENCE PLATFORM



**Annual  
Subscription**

# MARKET & OPPORTUNITY

*Our tech fits into market craving clarity and climate compliance*












**\$6.4 Bn**  
2024

**\$17.7 Bn**  
2030

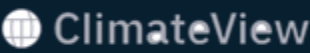
**Global market for AI based  
Urban Planning & Monitoring**



# WHAT MARKET IS LOOKING FOR

	SKYFI	Mitiga	ClimateView
Climate Intelligence for Non-Experts			
Hyper-local insights			
AI-powered simulations			

# DIFFERENTIATORS



Climate Intelligence  
for Non-Experts



Hyper-local insights



AI-powered simulations





# OUR TEAM: THE CORE OF THE COMPANY



**Gaetano Volpe**  
CEO



**Donato Amitrano**  
CIO



**Mauro Manente**  
COO



**Giovanni Giacco**  
CTO

**23**

EMPLOYEES

**100%**

SPACE & CLIMATE ENTHUSIASTS



**€5M**

Advance R&D to shape the future of predictive climate solution – **Our Foundation Model**

Accelerate growth through strategic acquisition in key verticals

Establish ASIA/US sales hub to expand global presence (increase in marketing investments)

**REVENUES FORECAST**

**€10,0 M**  
2026

**€26,0 M**  
2027

***LET'S SHAPE A SUSTAINABLE  
FUTURE TOGETHER***

**THANK YOU!**

**Gaetano Volpe - CEO**

**Gaetano.volpe@latitudo40.com  
+39 335 579 7 883**

**[www.latitudo40.com](http://www.latitudo40.com)**